

Weekly SLA Customer Report

Customer NIX_Production
Database ID 51



Harddisk Usage NIX_PRD_ABSAPP02

	Free disk space on c: (%)	Total disk space on c: (Gb)
23-9-2017	84	200
22-9-2017	84	200
21-9-2017	84	200
20-9-2017	84	200
19-9-2017	84	200
18-9-2017	84	200
17-9-2017	84	200

Harddisk Usage NIX_PRD_ABSAPP03

	Free disk space on c: (%)	Total disk space on c: (Gb)
23-9-2017	77	200
22-9-2017	77	200
21-9-2017	77	200
20-9-2017	77	200
19-9-2017	77	200
18-9-2017	78	200
17-9-2017	78	200

Weekly SLA Customer Report

Customer NIX_Production
 Database ID 51



Harddisk Usage NIX_PRD_ABSWEB01

	Free disk space on c: (%)	Total disk space on c: (Gb)
23-9-2017	90	300
22-9-2017	90	300
21-9-2017	90	300
20-9-2017	90	300
19-9-2017	90	300
18-9-2017	90	300
17-9-2017	91	300

Harddisk Usage NIX_PRD_ORACLE_B11

	Free disk space on c: (%)	Total disk space on c: (Gb)	Free disk space on e: (%)	Total disk space on e: (Gb)	Free disk space on f: (%)	Total disk space on f: (Gb)	Free disk space on g: (%)	Total disk space on g: (Gb)
23-9-2017	40	279	61	558	37	279	64	558
22-9-2017	41	279	61	558	37	279	60	558
21-9-2017	42	279	61	558	38	279	61	558
20-9-2017	41	279	61	558	37	279	62	558
19-9-2017	41	279	61	558	37	279	63	558
18-9-2017	41	279	61	558	37	279	64	558
17-9-2017	41	279	61	558	37	279	65	558

Weekly SLA Customer Report

Customer NIX_Production
Database ID 51



Harddisk Usage NIX_PRD_ORCDB1

	Free disk space on c: (%)	Total disk space on c: (Gb)	Free disk space on e: (%)	Total disk space on e: (Gb)	Free disk space on f: (%)	Total disk space on f: (Gb)	Free disk space on g: (%)	Total disk space on g: (Gb)
23-9-2017	55	279	74	558	79	558	59	279
22-9-2017	55	279	74	558	79	558	59	279
21-9-2017	55	279	74	558	79	558	59	279
20-9-2017	55	279	74	558	79	558	59	279
19-9-2017	55	279	74	558	79	558	59	279
18-9-2017	55	279	74	558	80	558	60	279
17-9-2017	55	279	74	558	80	558	59	279

Harddisk Usage NIX_PRD_ORCDB2

	Free disk space on c: (%)	Total disk space on c: (Gb)	Free disk space on e: (%)	Total disk space on e: (Gb)	Free disk space on f: (%)	Total disk space on f: (Gb)	Free disk space on g: (%)	Total disk space on g: (Gb)
23-9-2017	55	279	74	558	79	558	59	279
22-9-2017	55	279	74	558	79	558	59	279
21-9-2017	55	279	74	558	79	558	59	279
20-9-2017	55	279	74	558	79	558	59	279
19-9-2017	55	279	74	558	79	558	59	279
18-9-2017	55	279	74	558	80	558	60	279
17-9-2017	55	279	74	558	80	558	59	279

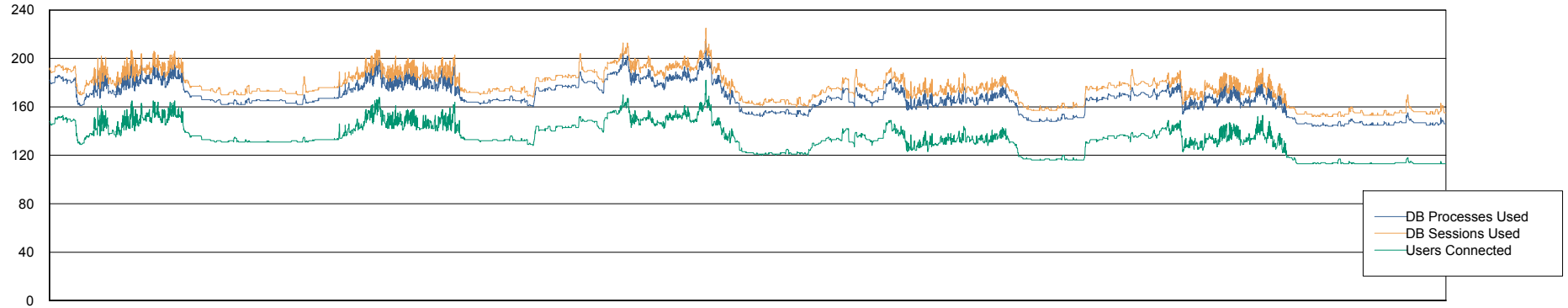
Weekly SLA Customer Report

Customer NIX_Production
Database ID 51

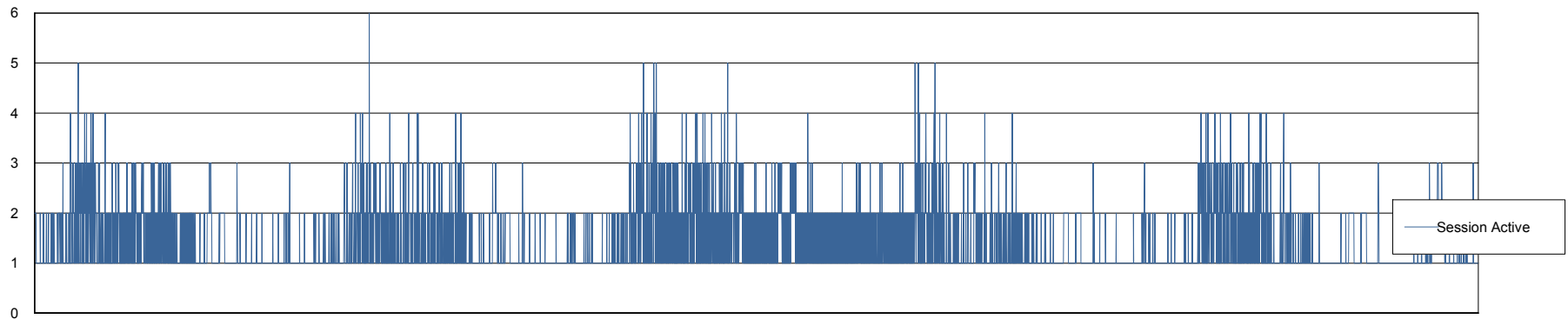


Database Performance NIXDB_Production

DB Processes Max 500
DB Sessions Max 800



18-9-2017 19-9-2017 20-9-2017 21-9-2017 22-9-2017 23-9-2017



18-9-2017 19-9-2017 20-9-2017 21-9-2017 22-9-2017 23-9-2017

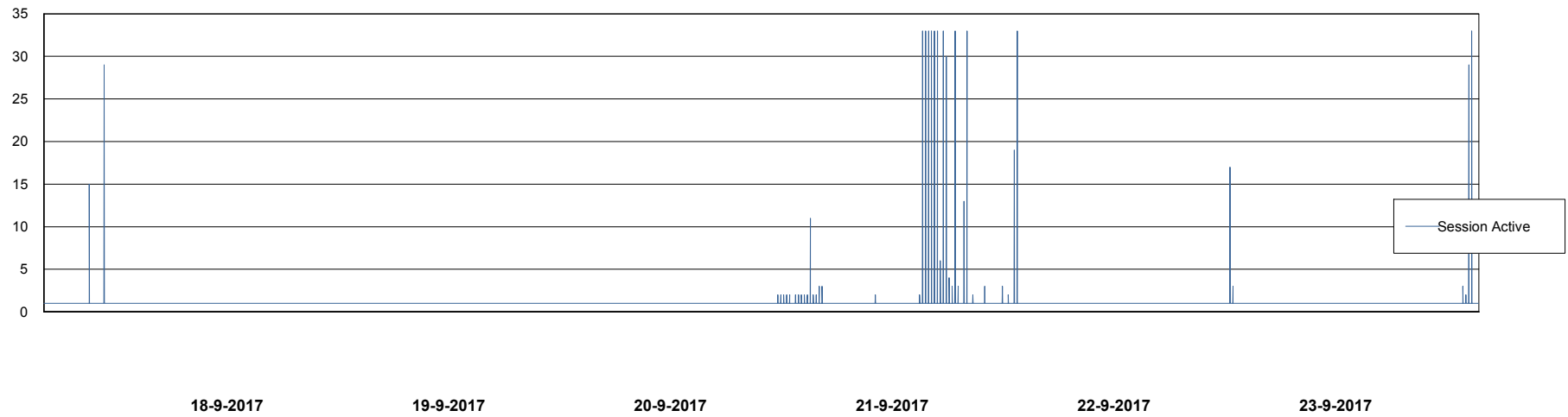
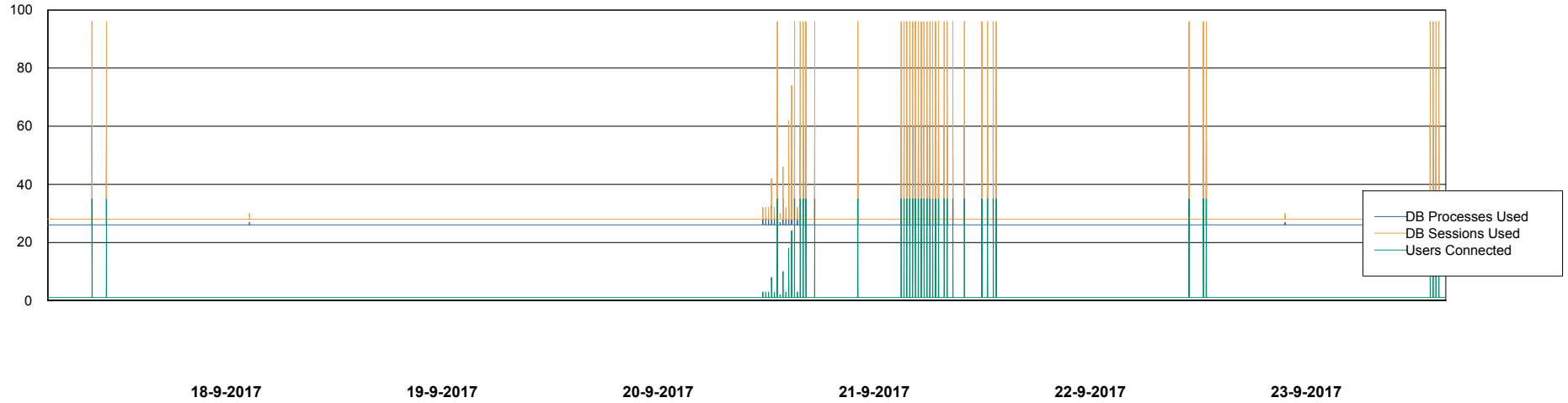
Weekly SLA Customer Report

Customer NIX_Production
Database ID 51



Database Performance NIXDB_Standby

DB Processes Max 500
DB Sessions Max 800



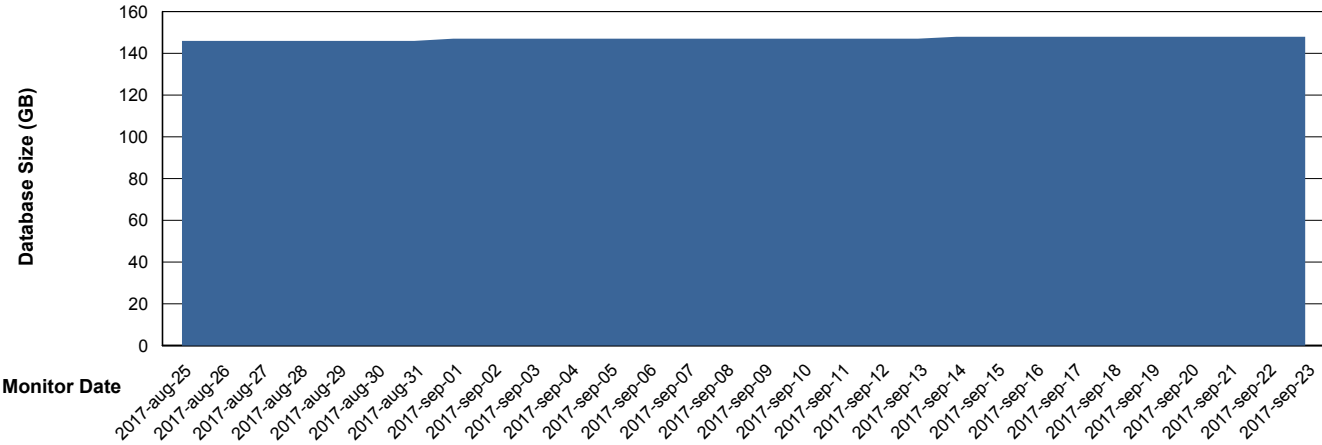
Weekly SLA Customer Report

Customer NIX_Production
 Database ID 51



DATABASE SIZE NIXDB_Production

Database growth over last month



Database Tablespace NIXDB_Production

Date	Tablespace Name	Filesize (Gb)	Usedsize (Gb)	Percentage free
23-9-2017	ABSDATA	63	52	17
	INDX	115	95	17
22-9-2017	ABSDATA	63	52	17
	INDX	115	95	17
21-9-2017	ABSDATA	63	52	17
	INDX	115	95	17
20-9-2017	ABSDATA	63	52	17
	INDX	115	95	17
19-9-2017	ABSDATA	63	52	17
	INDX	115	95	17
18-9-2017	ABSDATA	63	52	17
	INDX	115	95	17
17-9-2017	ABSDATA	63	52	17
	INDX	110	94	15

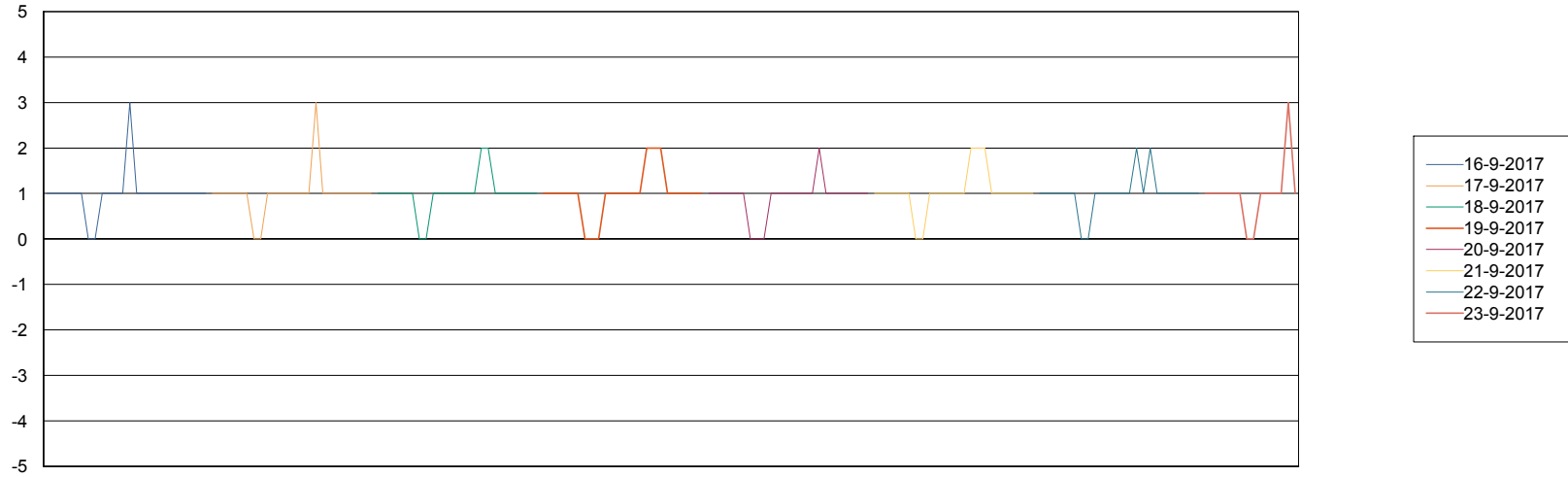
Weekly SLA Customer Report

Customer NIX_Production
Database ID 51



Standby Database Health NIX_Production

Recovery lag for last 7 days



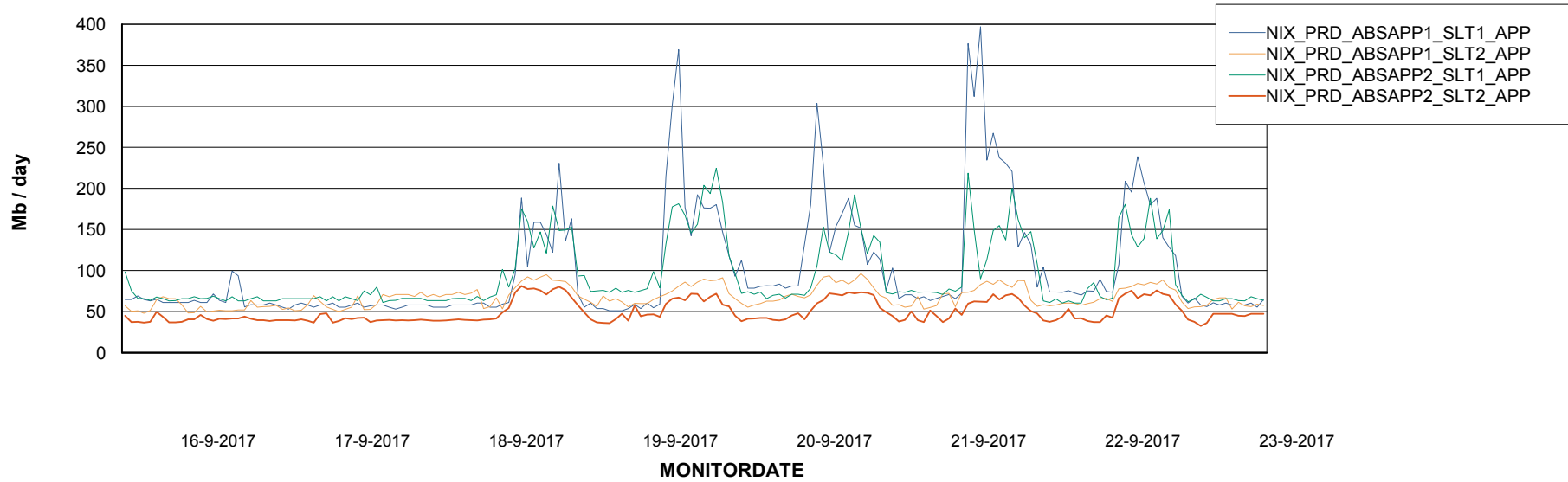
Weekly SLA Customer Report

Customer NIX_Production
Database ID 51

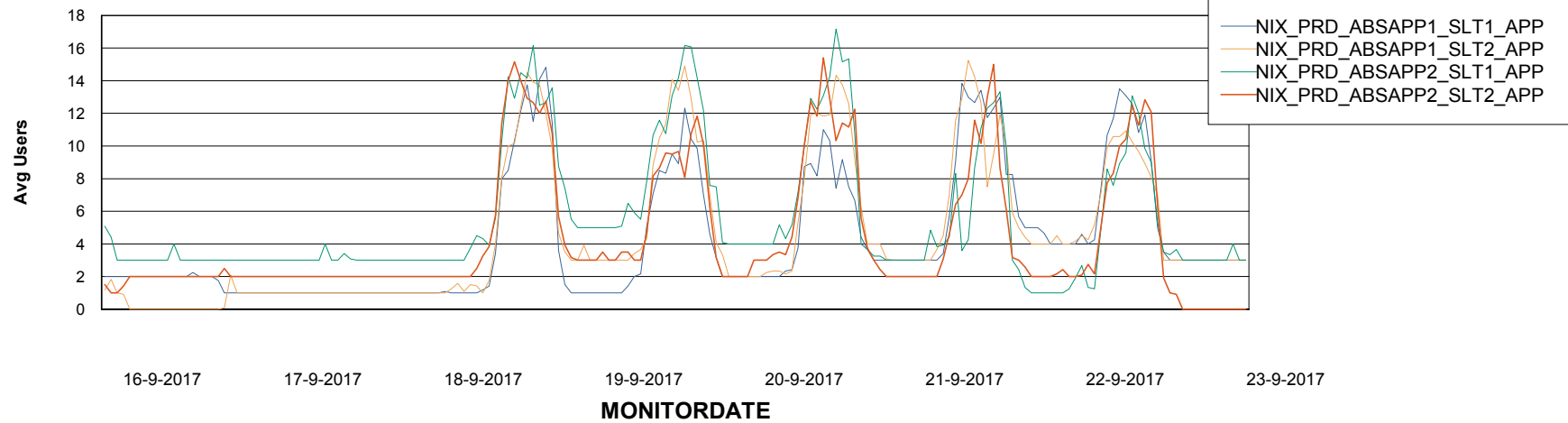


ABSolute Application Server Services

Avg memory used per ABS Server Service



Avg users per day per ABS server



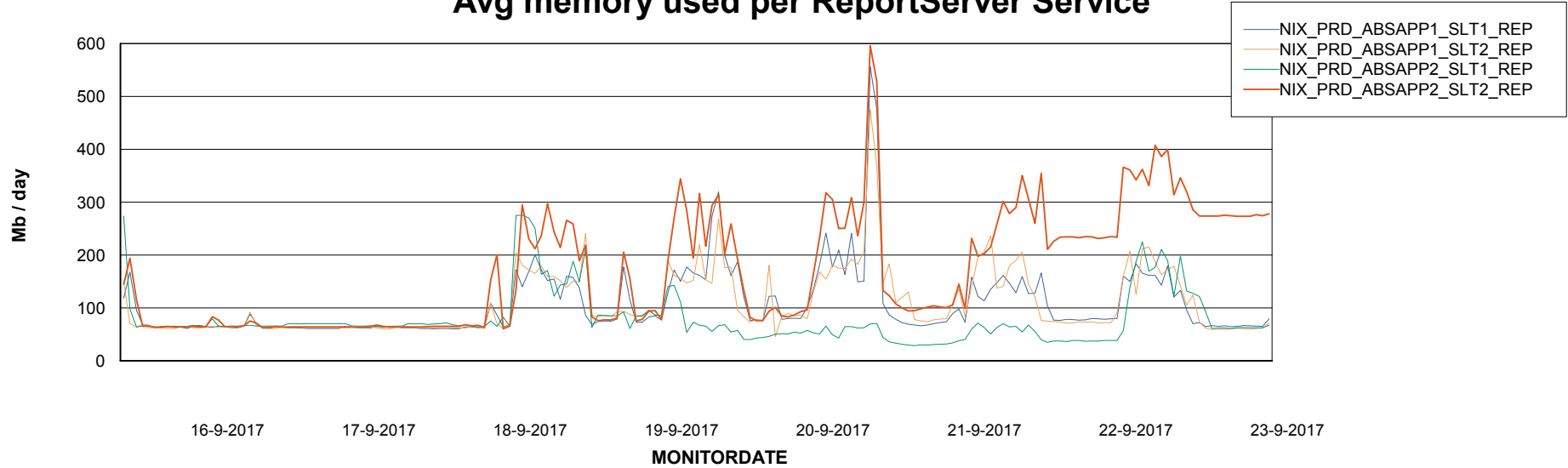
Weekly SLA Customer Report

Customer NIX_Production
Database ID 51



ABSSolute Application ReportServer Services

Avg memory used per ReportServer Service



Disaster per ABS component

