

Weekly SLA Customer Report

Customer NIX_Production
 Database ID 51



Harddisk Usage NIX_PRD_ABSAPP02

	Free disk space on c: (%)	Total disk space on c: (Gb)
16-9-2017	84	200
15-9-2017	84	200
14-9-2017	84	200
13-9-2017	84	200
12-9-2017	84	200
11-9-2017	84	200
10-9-2017	84	200

Harddisk Usage NIX_PRD_ABSAPP03

	Free disk space on c: (%)	Total disk space on c: (Gb)
16-9-2017	78	200
15-9-2017	78	200
14-9-2017	78	200
13-9-2017	78	200
12-9-2017	78	200
11-9-2017	78	200
10-9-2017	78	200

Weekly SLA Customer Report

Customer NIX_Production
 Database ID 51



Harddisk Usage NIX_PRD_ABSWEB01

	Free disk space on c: (%)	Total disk space on c: (Gb)
16-9-2017	91	300
15-9-2017	91	300
14-9-2017	91	300
13-9-2017	91	300
12-9-2017	91	300
11-9-2017	91	300
10-9-2017	91	300

Harddisk Usage NIX_PRD_ORACLE_B11

	Free disk space on c: (%)	Total disk space on c: (Gb)	Free disk space on e: (%)	Total disk space on e: (Gb)	Free disk space on f: (%)	Total disk space on f: (Gb)	Free disk space on g: (%)	Total disk space on g: (Gb)
16-9-2017	40	279	61	558	37	279	65	558
15-9-2017	40	279	61	558	37	279	62	558
14-9-2017	42	279	61	558	37	279	63	558
13-9-2017	41	279	61	558	37	279	64	558
12-9-2017	40	279	61	558	37	279	65	558
11-9-2017	40	279	61	558	37	279	66	558
10-9-2017	41	279	61	558	37	279	67	558

Weekly SLA Customer Report

Customer NIX_Production
Database ID 51



Harddisk Usage NIX_PRD_ORCDB1

	Free disk space on c: (%)	Total disk space on c: (Gb)	Free disk space on e: (%)	Total disk space on e: (Gb)	Free disk space on f: (%)	Total disk space on f: (Gb)	Free disk space on g: (%)	Total disk space on g: (Gb)
16-9-2017	55	279	74	558	80	558	59	279
15-9-2017	55	279	74	558	80	558	59	279
14-9-2017	55	279	74	558	80	558	59	279
13-9-2017	55	279	74	558	80	558	59	279
12-9-2017	55	279	74	558	80	558	59	279
11-9-2017	55	279	74	558	80	558	60	279
10-9-2017	48	279	74	558	80	558	60	279

Harddisk Usage NIX_PRD_ORCDB2

	Free disk space on c: (%)	Total disk space on c: (Gb)	Free disk space on e: (%)	Total disk space on e: (Gb)	Free disk space on f: (%)	Total disk space on f: (Gb)	Free disk space on g: (%)	Total disk space on g: (Gb)
16-9-2017	55	279	74	558	80	558	59	279
15-9-2017	55	279	74	558	80	558	59	279
14-9-2017	55	279	74	558	80	558	59	279
13-9-2017	55	279	74	558	80	558	59	279
12-9-2017	55	279	74	558	80	558	59	279
11-9-2017	55	279	74	558	80	558	60	279
10-9-2017	48	279	74	558	80	558	60	279

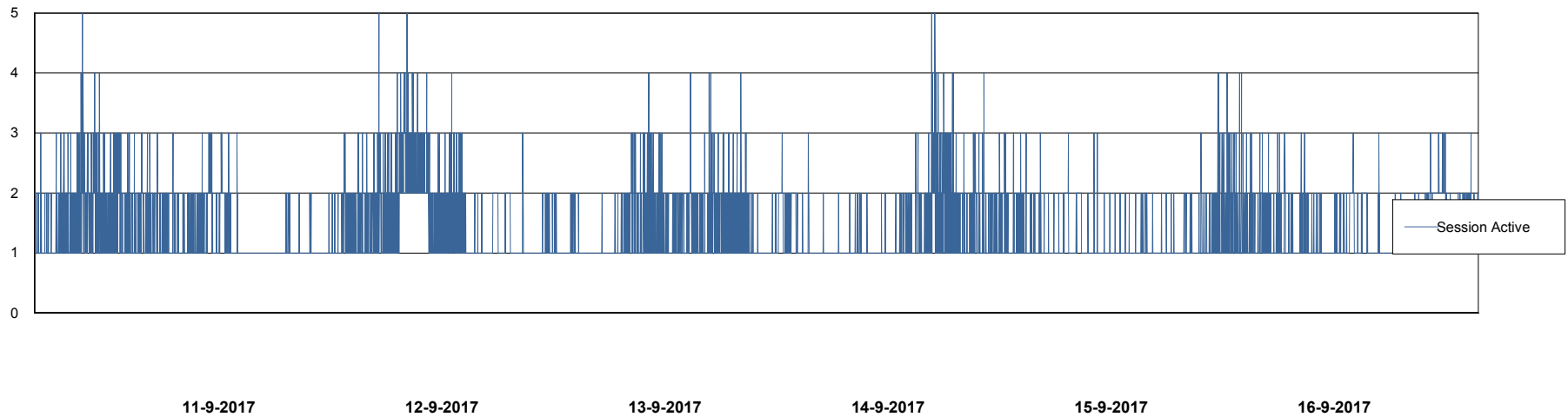
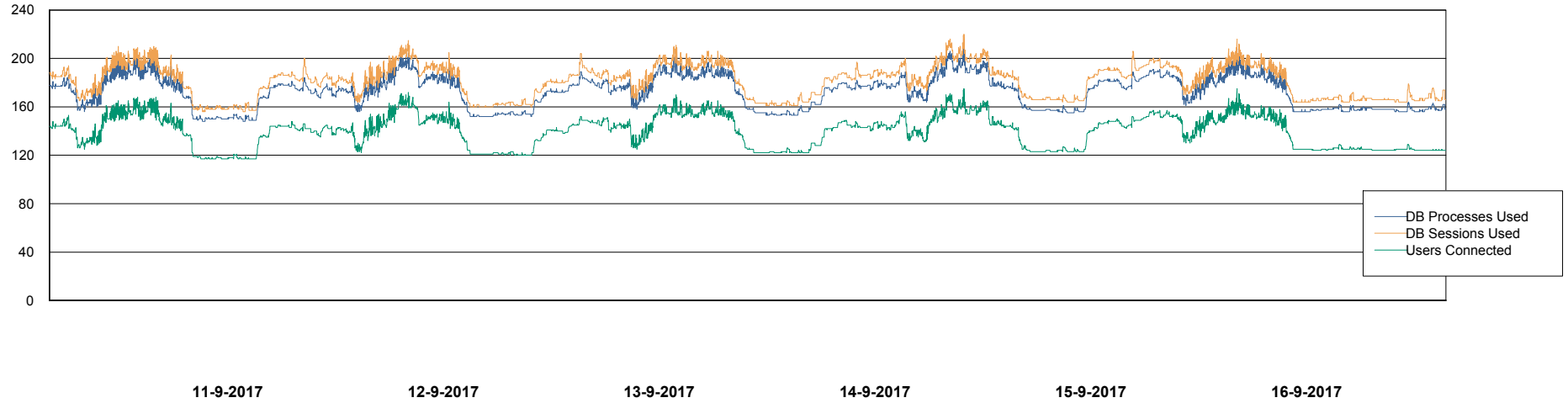
Weekly SLA Customer Report

Customer NIX_Production
Database ID 51



Database Performance NIXDB_Production

DB Processes Max 500
DB Sessions Max 800



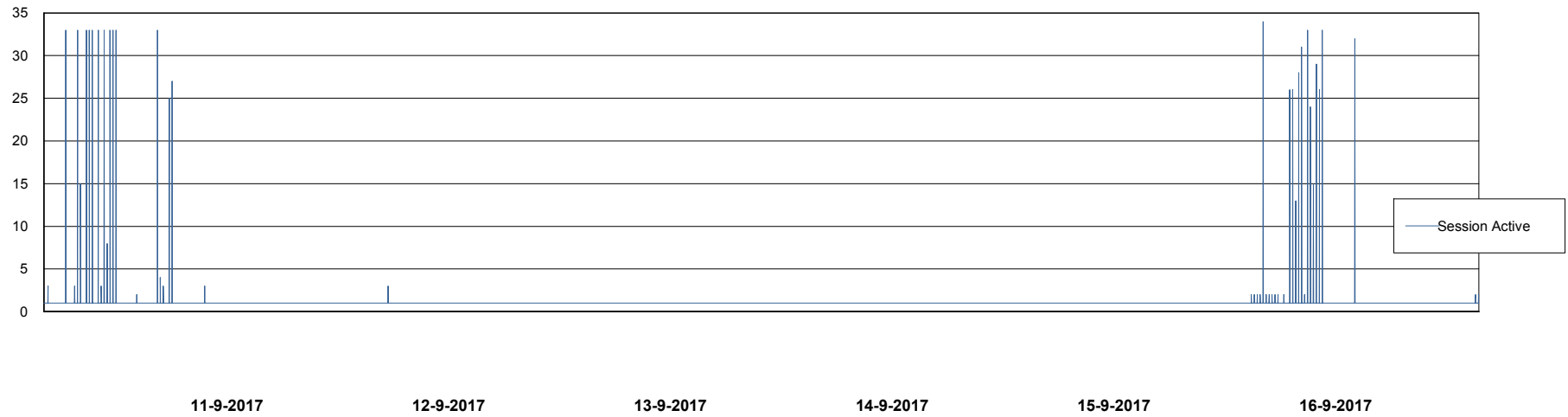
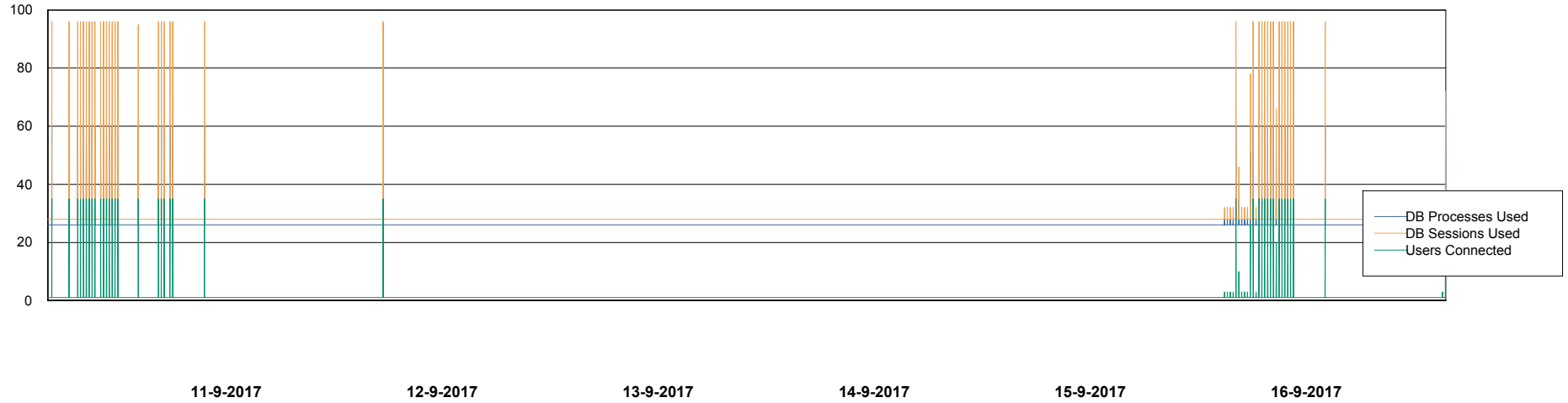
Weekly SLA Customer Report

Customer NIX_Production
Database ID 51



Database Performance NIXDB_Standby

DB Processes Max 500
DB Sessions Max 800



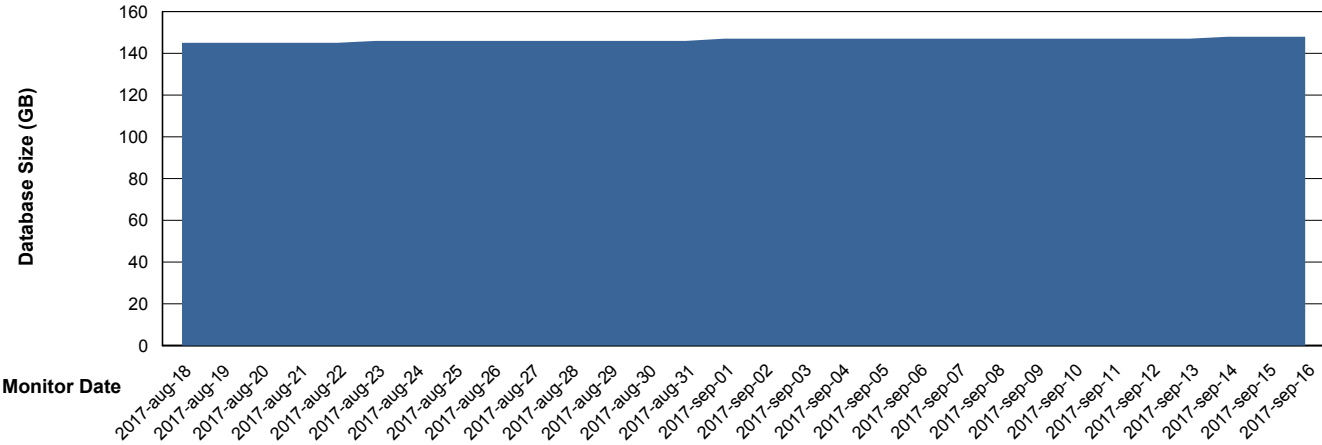
Weekly SLA Customer Report

Customer NIX_Production
 Database ID 51



DATABASE SIZE NIXDB_Production

Database growth over last month



Database Tablespace NIXDB_Production

Date	Tablespace Name	Filesize (Gb)	Usedsize (Gb)	Percentage free
16-9-2017	ABSDATA	63	52	17
	INDX	110	94	15
15-9-2017	ABSDATA	63	52	17
	INDX	110	94	15
14-9-2017	ABSDATA	63	52	17
	INDX	110	94	15
13-9-2017	ABSDATA	63	52	17
	INDX	110	94	15
12-9-2017	ABSDATA	63	52	17
	INDX	110	94	15
11-9-2017	ABSDATA	63	52	17
	INDX	110	94	15
10-9-2017	ABSDATA	63	52	17
	INDX	110	94	15

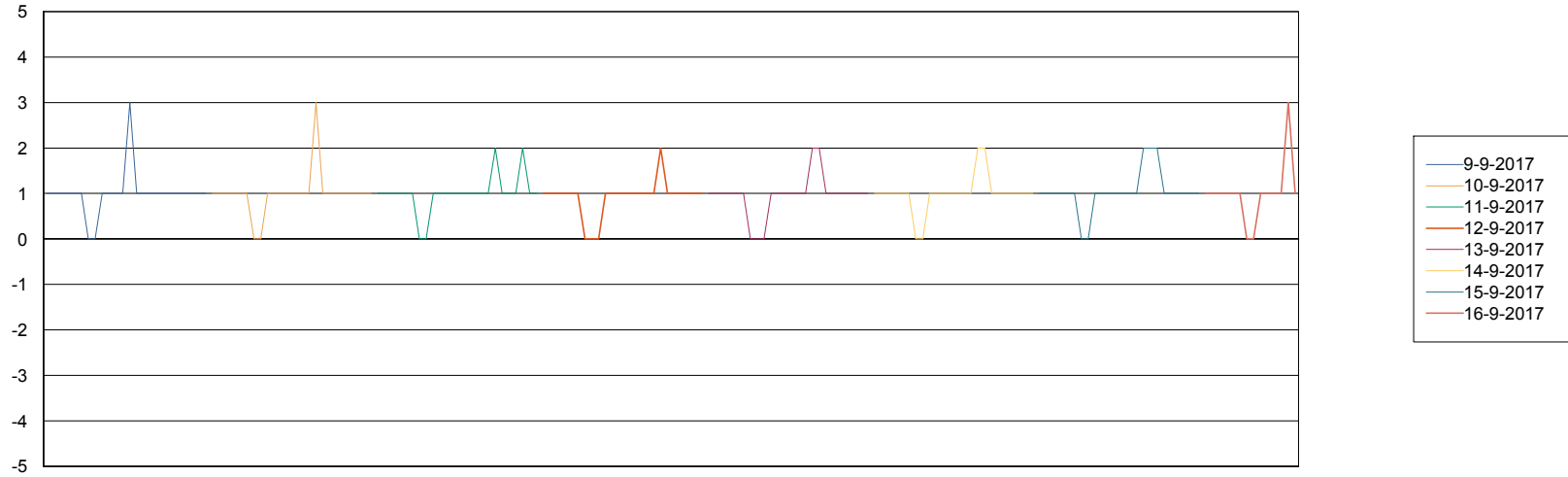
Weekly SLA Customer Report

Customer NIX_Production
Database ID 51



Standby Database Health NIX_Production

Recovery lag for last 7 days



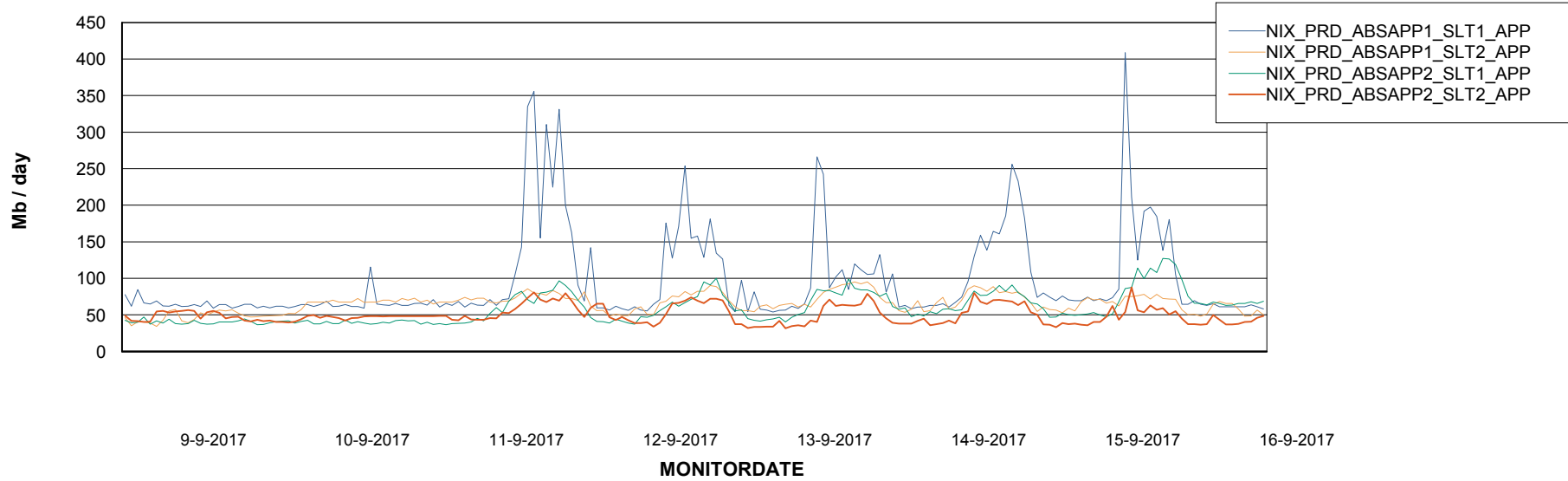
Weekly SLA Customer Report

Customer NIX_Production
Database ID 51

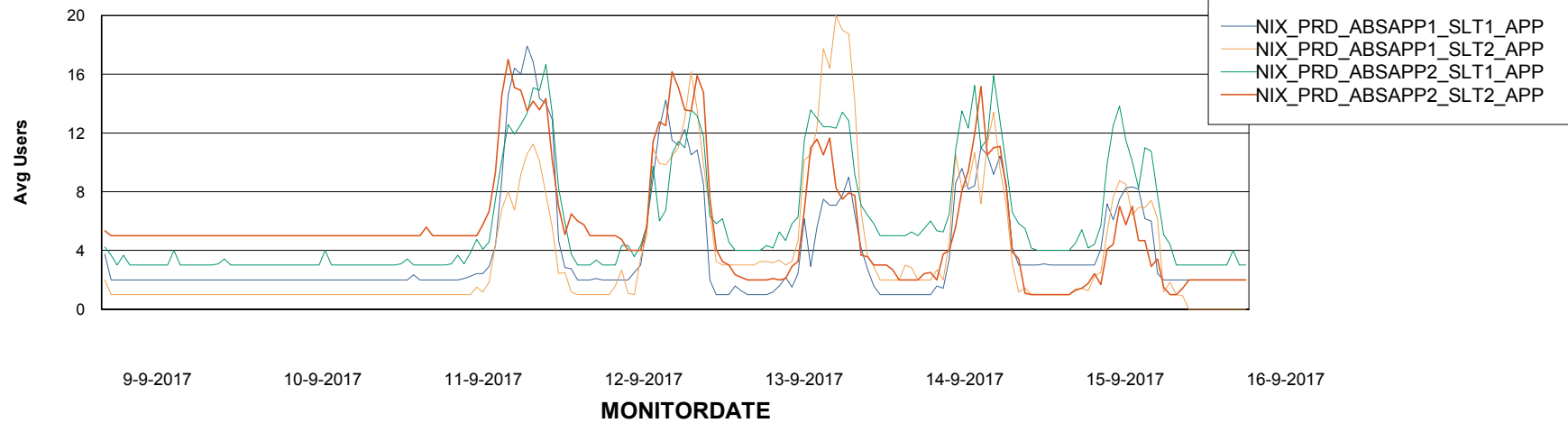


ABSolute Application Server Services

Avg memory used per ABS Server Service



Avg users per day per ABS server



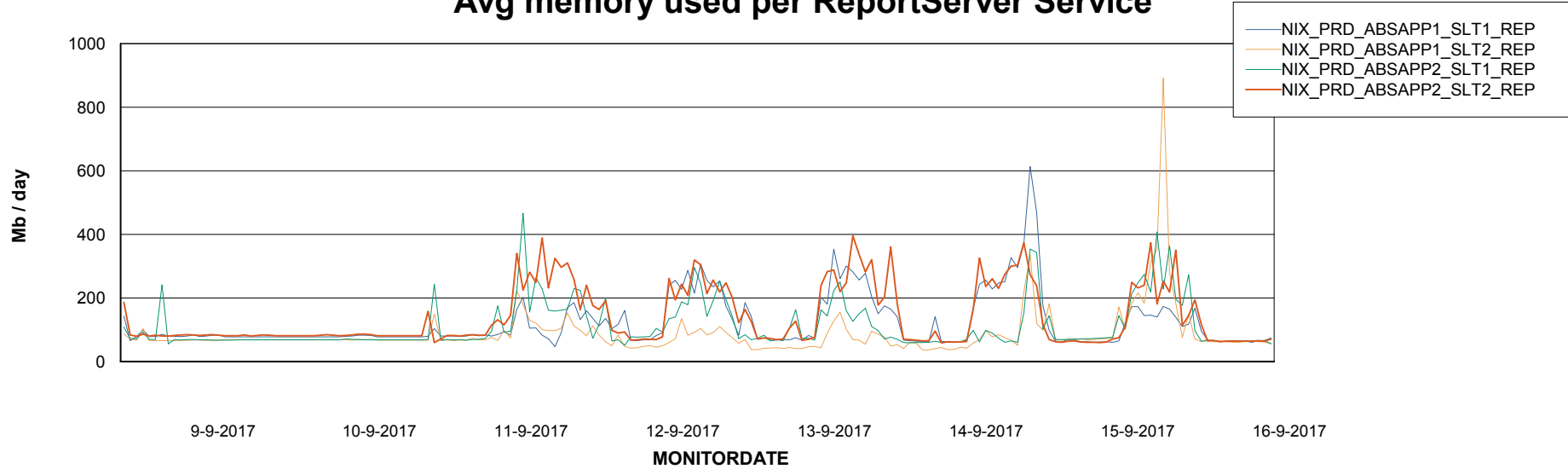
Weekly SLA Customer Report

Customer NIX_Production
Database ID 51



ABSSolute Application ReportServer Services

Avg memory used per ReportServer Service



Disaster per ABS component

