

Weekly SLA Customer Report

Customer NIX_Production
 Database ID 51



Harddisk Usage NIX_PRD_ABSAPP02

	Free disk space on c: (%)	Total disk space on c: (Gb)
2-9-2017	84	200
1-9-2017	84	200
31-8-2017	84	200
30-8-2017	84	200
29-8-2017	84	200
28-8-2017	84	200
27-8-2017	84	200

Harddisk Usage NIX_PRD_ABSAPP03

	Free disk space on c: (%)	Total disk space on c: (Gb)
2-9-2017	78	200
1-9-2017	78	200
31-8-2017	78	200
30-8-2017	78	200
29-8-2017	78	200
28-8-2017	78	200
27-8-2017	78	200

Weekly SLA Customer Report

Customer NIX_Production
Database ID 51



Harddisk Usage NIX_PRD_ABSWEB01

	Free disk space on c: (%)	Total disk space on c: (Gb)
2-9-2017	90	300
1-9-2017	90	300
31-8-2017	90	300
30-8-2017	90	300
29-8-2017	90	300
28-8-2017	90	300
27-8-2017	90	300

Harddisk Usage NIX_PRD_ORACLE_B11

	Free disk space on c: (%)	Total disk space on c: (Gb)	Free disk space on e: (%)	Total disk space on e: (Gb)	Free disk space on f: (%)	Total disk space on f: (Gb)	Free disk space on g: (%)	Total disk space on g: (Gb)
2-9-2017	32	279	61	558	38	279	67	558
1-9-2017	32	279	61	558	38	279	63	558
31-8-2017	32	279	62	558	37	279	64	558
30-8-2017	32	279	62	558	37	279	65	558
29-8-2017	35	279	62	558	37	279	66	558
28-8-2017	32	279	62	558	37	279	67	558
27-8-2017	32	279	62	558	37	279	68	558

Weekly SLA Customer Report

Customer NIX_Production
 Database ID 51



Harddisk Usage NIX_PRD_ORCDB1

	Free disk space on c: (%)	Total disk space on c: (Gb)	Free disk space on e: (%)	Total disk space on e: (Gb)	Free disk space on f: (%)	Total disk space on f: (Gb)	Free disk space on g: (%)	Total disk space on g: (Gb)
2-9-2017	39	279	74	558	80	558	59	279
1-9-2017	46	279	74	558	80	558	59	279
31-8-2017	55	279	74	558	80	558	59	279
30-8-2017	55	279	74	558	80	558	59	279
29-8-2017	55	279	74	558	80	558	60	279
28-8-2017	55	279	74	558	79	558	60	279
27-8-2017	55	279	73	558	79	558	59	279

Harddisk Usage NIX_PRD_ORCDB2

	Free disk space on c: (%)	Total disk space on c: (Gb)	Free disk space on e: (%)	Total disk space on e: (Gb)	Free disk space on f: (%)	Total disk space on f: (Gb)	Free disk space on g: (%)	Total disk space on g: (Gb)
2-9-2017	39	279	74	558	80	558	59	279
1-9-2017	46	279	74	558	80	558	59	279
31-8-2017	55	279	74	558	80	558	59	279
30-8-2017	55	279	74	558	80	558	59	279
29-8-2017	55	279	74	558	80	558	60	279
28-8-2017	55	279	74	558	79	558	60	279
27-8-2017	55	279	73	558	79	558	59	279

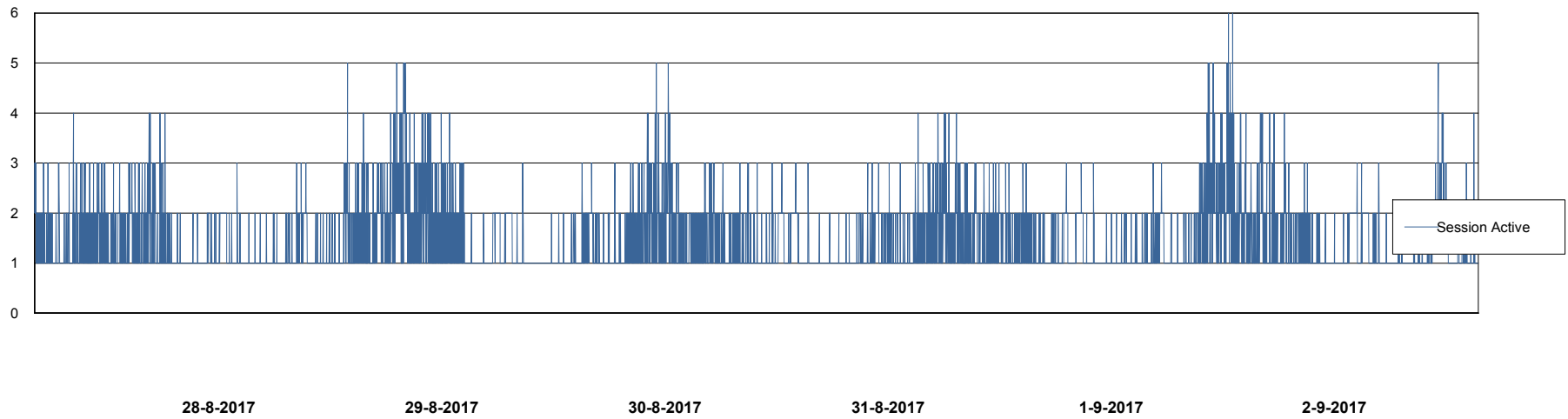
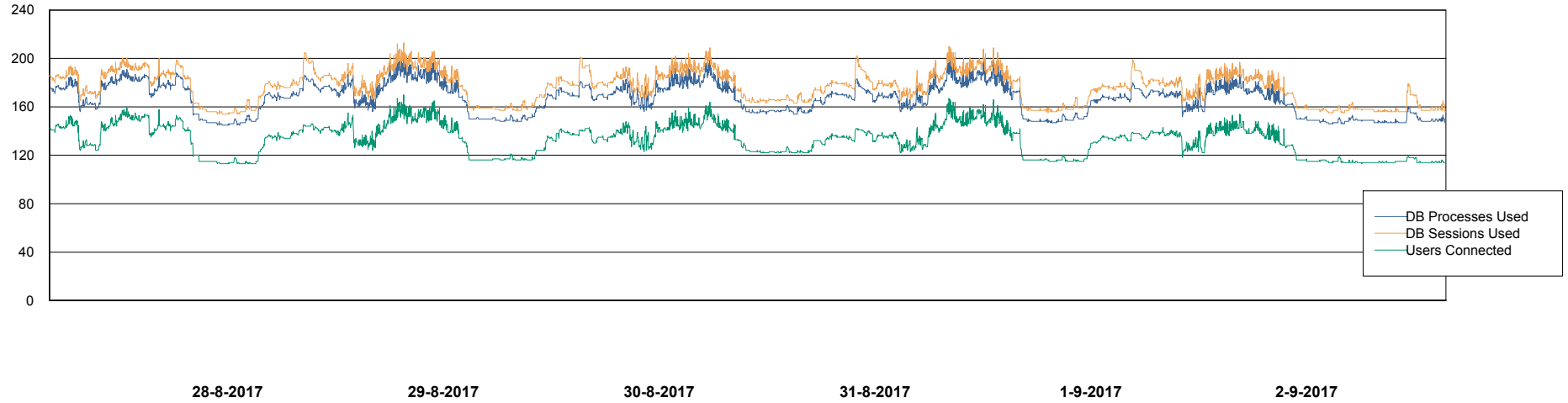
Weekly SLA Customer Report

Customer NIX_Production
Database ID 51



Database Performance NIXDB_Production

DB Processes Max 500
DB Sessions Max 800



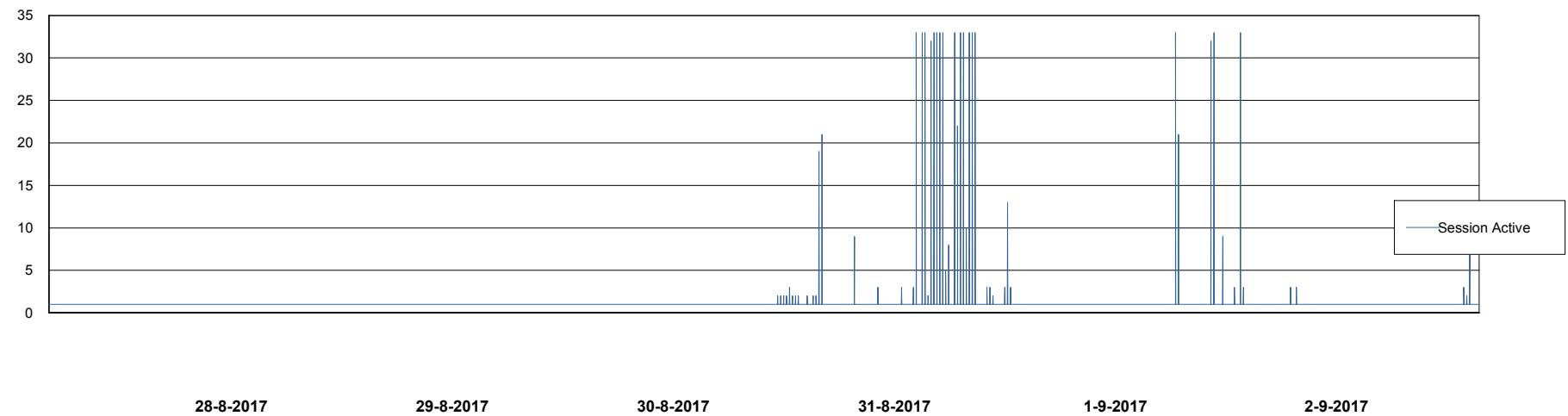
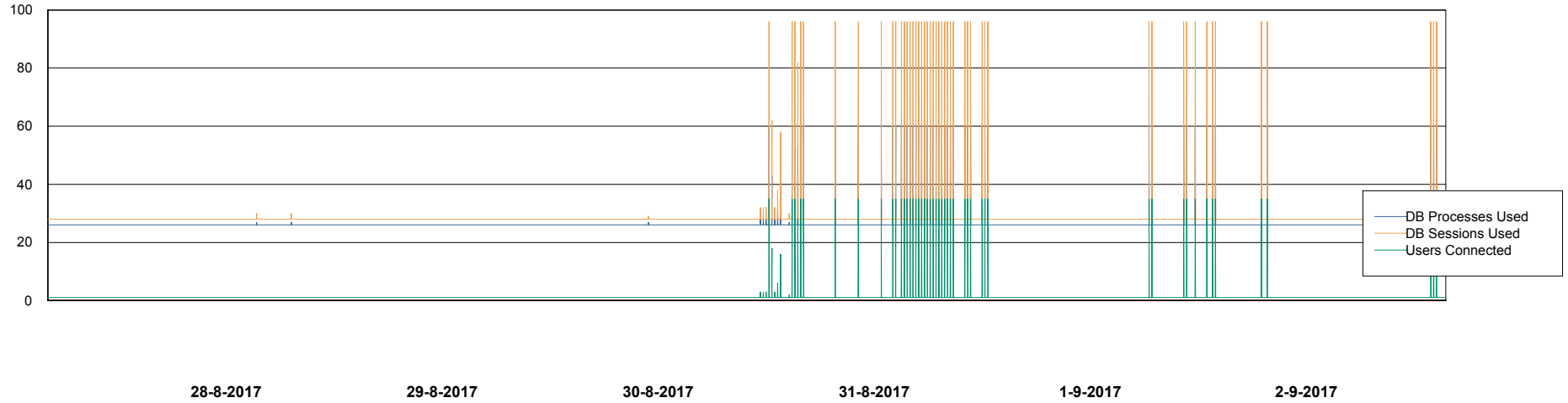
Weekly SLA Customer Report

Customer NIX_Production
Database ID 51



Database Performance NIXDB_Standby

DB Processes Max 500
DB Sessions Max 800



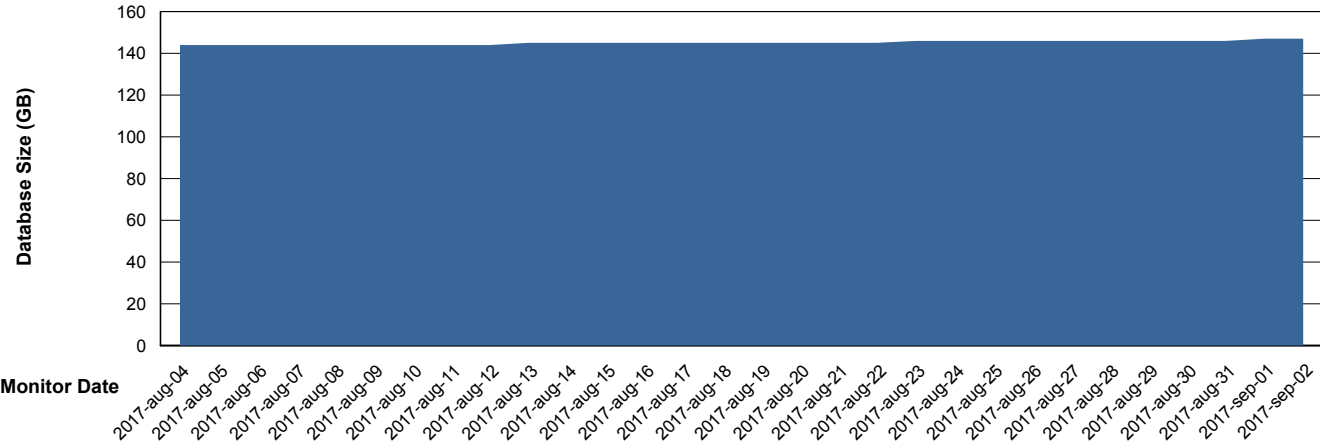
Weekly SLA Customer Report

Customer NIX_Production
 Database ID 51



DATABASE SIZE NIXDB_Production

Database growth over last month



Database Tablespace		NIXDB_Production		
Date	Tablespace Name	Filesize (Gb)	Usedsize (Gb)	Percentage free
2-9-2017	ABSDATA	63	52	17
	INDX	110	94	15
1-9-2017	ABSDATA	63	52	17
	INDX	110	93	15
31-8-2017	ABSDATA	63	52	17
	INDX	110	93	15
30-8-2017	ABSDATA	63	52	17
	INDX	110	93	15
29-8-2017	ABSDATA	63	52	17
	INDX	110	93	15
28-8-2017	ABSDATA	63	52	17
	INDX	110	93	15
27-8-2017	ABSDATA	63	52	17
	INDX	110	93	15

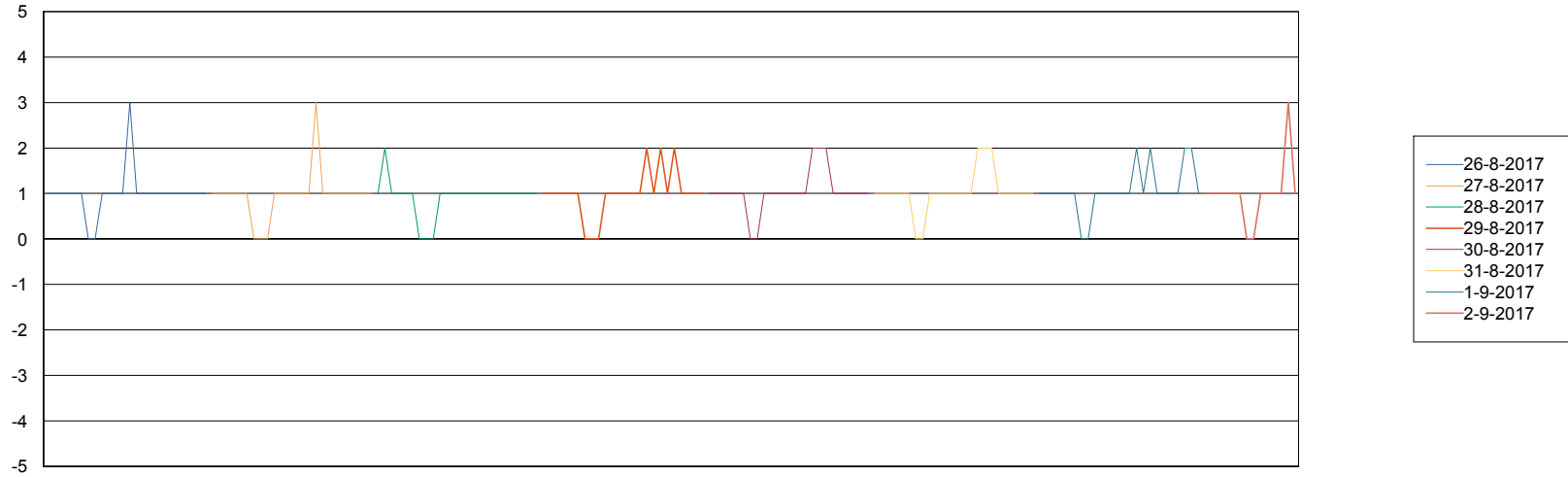
Weekly SLA Customer Report

Customer NIX_Production
Database ID 51



Standby Database Health NIX_Production

Recovery lag for last 7 days



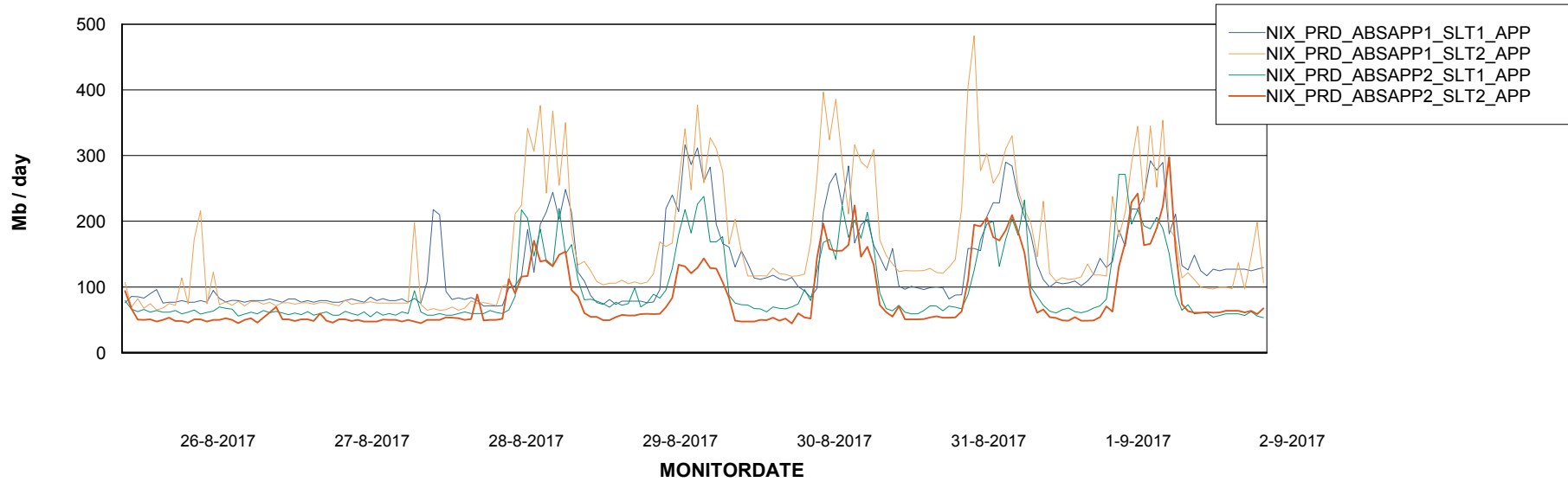
Weekly SLA Customer Report

Customer NIX_Production
Database ID 51

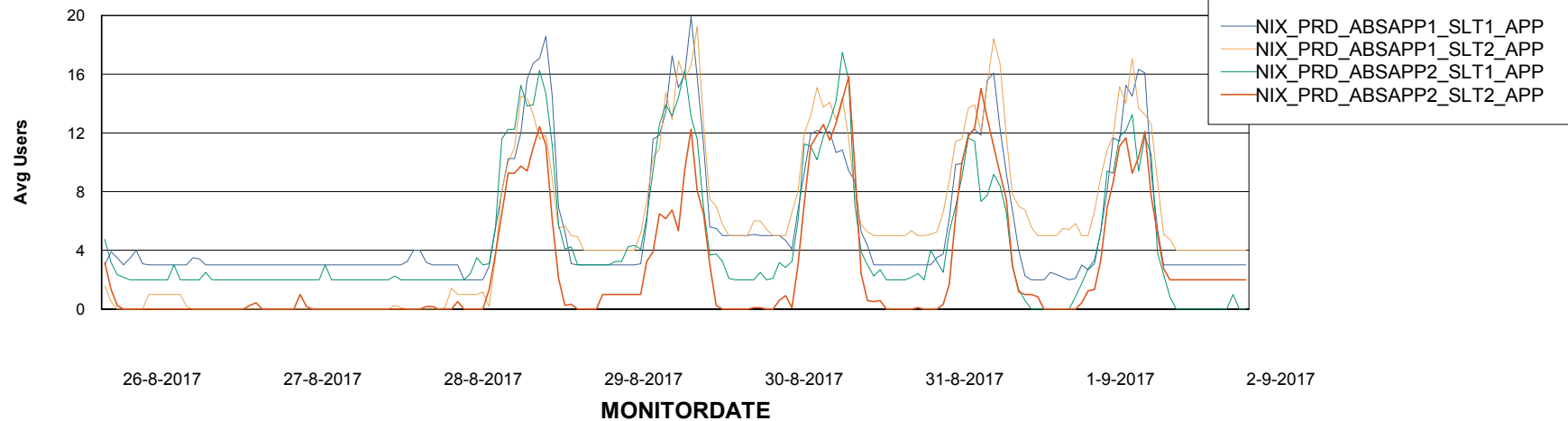


ABSSolute Application Server Services

Avg memory used per ABS Server Service



Avg users per day per ABS server



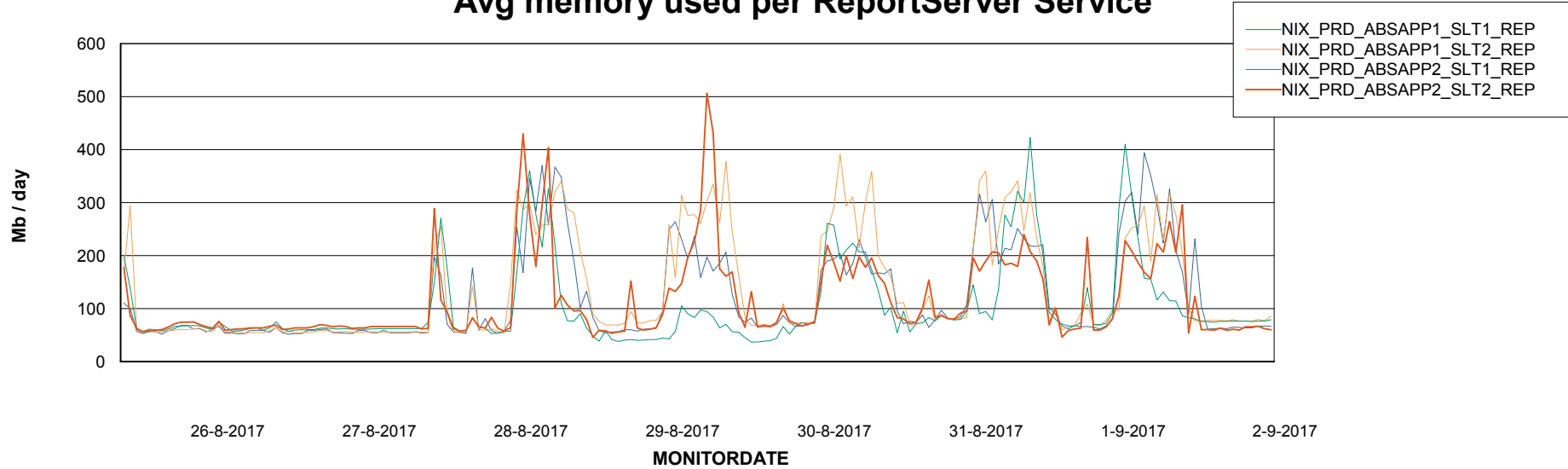
Weekly SLA Customer Report

Customer NIX_Production
Database ID 51



ABSSolute Application ReportServer Services

Avg memory used per ReportServer Service



Disaster per ABS component

