

Weekly SLA Customer Report

Customer NIX_Production
Database ID 51



Harddisk Usage NIX_PRD_ABSAPP02

	Free disk space on c: (%)	Total disk space on c: (Gb)
26-8-2017	84	200
25-8-2017	84	200
24-8-2017	84	200
23-8-2017	84	200
22-8-2017	84	200
21-8-2017	84	200
20-8-2017	84	200

Harddisk Usage NIX_PRD_ABSAPP03

	Free disk space on c: (%)	Total disk space on c: (Gb)
26-8-2017	78	200
25-8-2017	78	200
24-8-2017	78	200
23-8-2017	78	200
22-8-2017	78	200
21-8-2017	78	200
20-8-2017	78	200

Weekly SLA Customer Report

Customer NIX_Production
Database ID 51



Harddisk Usage NIX_PRD_ABSWEB01

	Free disk space on c: (%)	Total disk space on c: (Gb)
26-8-2017	90	300
25-8-2017	90	300
24-8-2017	90	300
23-8-2017	90	300
22-8-2017	90	300
21-8-2017	90	300
20-8-2017	90	300

Harddisk Usage NIX_PRD_ORACLE_B11

	Free disk space on c: (%)	Total disk space on c: (Gb)	Free disk space on e: (%)	Total disk space on e: (Gb)	Free disk space on f: (%)	Total disk space on f: (Gb)	Free disk space on g: (%)	Total disk space on g: (Gb)
26-8-2017	32	279	62	558	38	279	67	558
25-8-2017	32	279	62	558	38	279	63	558
24-8-2017	32	279	62	558	37	279	64	558
23-8-2017	33	279	62	558	37	279	65	558
22-8-2017	35	279	62	558	37	279	66	558
21-8-2017	44	279	62	558	37	279	67	558
20-8-2017	47	279	62	558	37	279	67	558

Weekly SLA Customer Report

Customer NIX_Production
Database ID 51



Harddisk Usage NIX_PRD_ORCDB1

	Free disk space on c: (%)	Total disk space on c: (Gb)	Free disk space on e: (%)	Total disk space on e: (Gb)	Free disk space on f: (%)	Total disk space on f: (Gb)	Free disk space on g: (%)	Total disk space on g: (Gb)
26-8-2017	55	279	73	558	79	558	59	279
25-8-2017	55	279	74	558	80	558	59	279
24-8-2017	55	279	74	558	80	558	59	279
23-8-2017	55	279	74	558	80	558	59	279
22-8-2017	55	279	74	558	80	558	60	279
21-8-2017	55	279	74	558	80	558	60	279
20-8-2017	55	279	74	558	80	558	60	279

Harddisk Usage NIX_PRD_ORCDB2

	Free disk space on c: (%)	Total disk space on c: (Gb)	Free disk space on e: (%)	Total disk space on e: (Gb)	Free disk space on f: (%)	Total disk space on f: (Gb)	Free disk space on g: (%)	Total disk space on g: (Gb)
26-8-2017	55	279	73	558	79	558	59	279
25-8-2017	55	279	74	558	80	558	59	279
24-8-2017	55	279	74	558	80	558	59	279
23-8-2017	55	279	74	558	80	558	59	279
22-8-2017	55	279	74	558	80	558	60	279
21-8-2017	55	279	74	558	80	558	60	279
20-8-2017	55	279	74	558	80	558	60	279

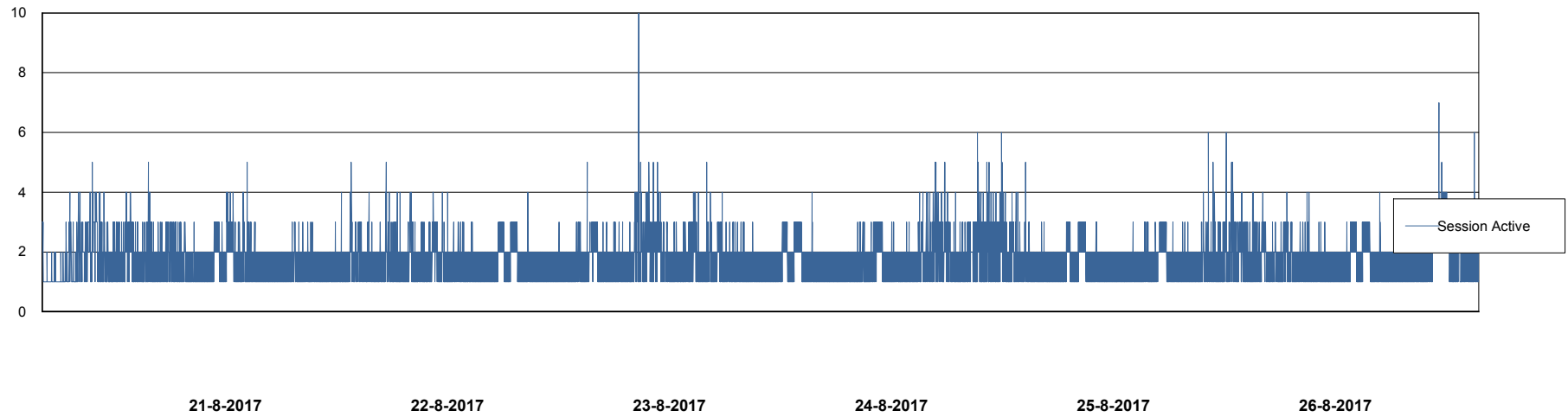
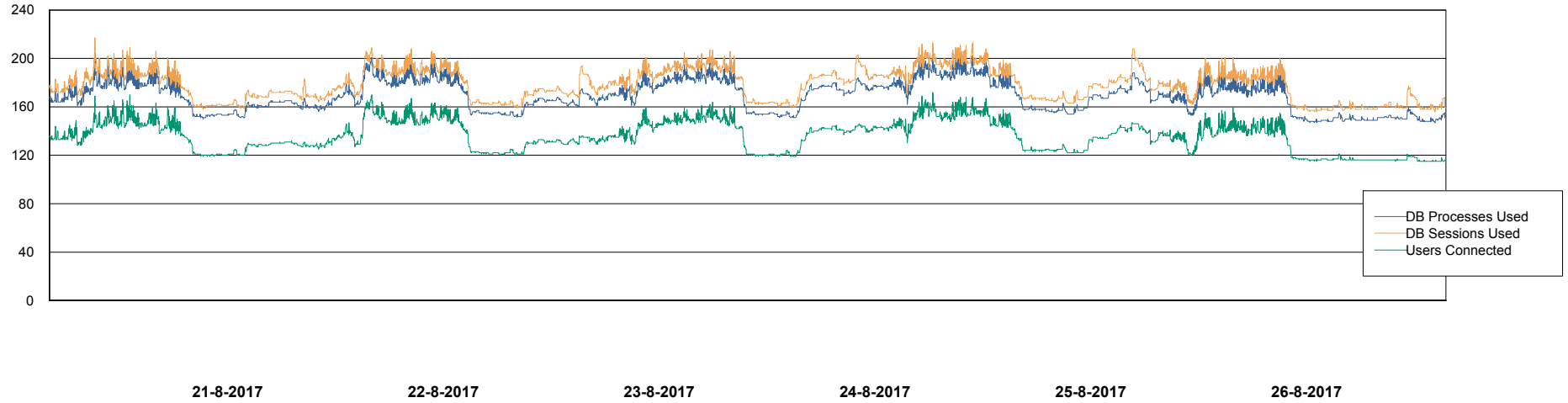
Weekly SLA Customer Report

Customer NIX_Production
Database ID 51



Database Performance NIXDB_Production

DB Processes Max 500
DB Sessions Max 800



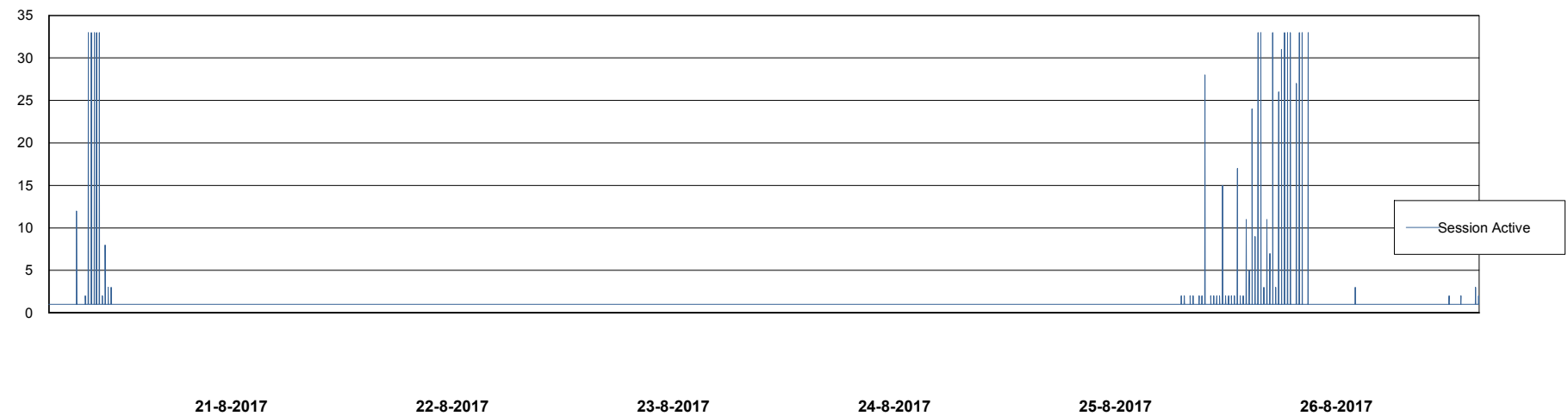
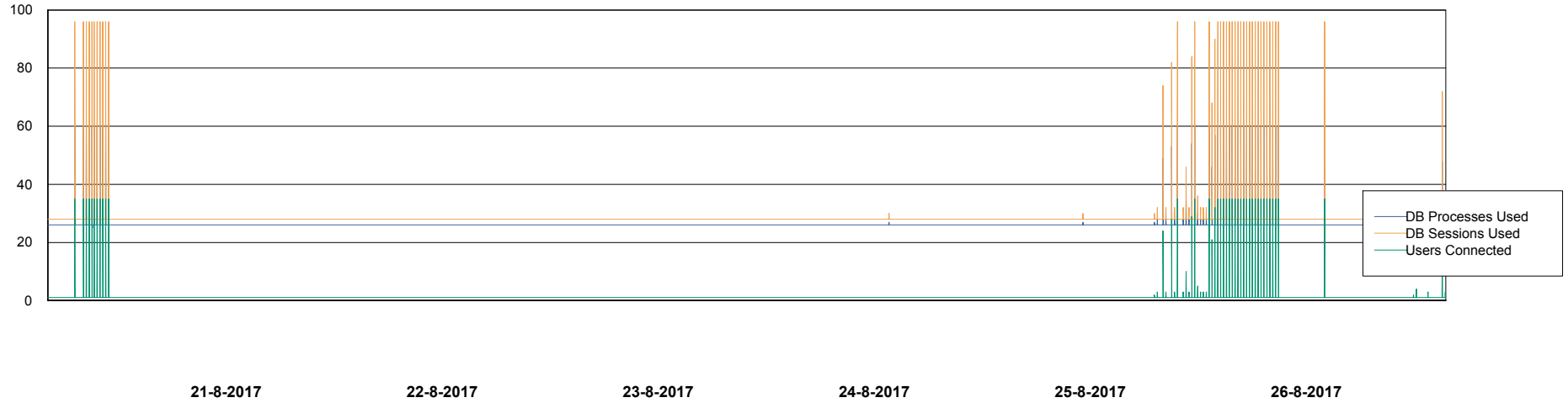
Weekly SLA Customer Report

Customer NIX_Production
Database ID 51



Database Performance NIXDB_Standby

DB Processes Max 500
DB Sessions Max 800



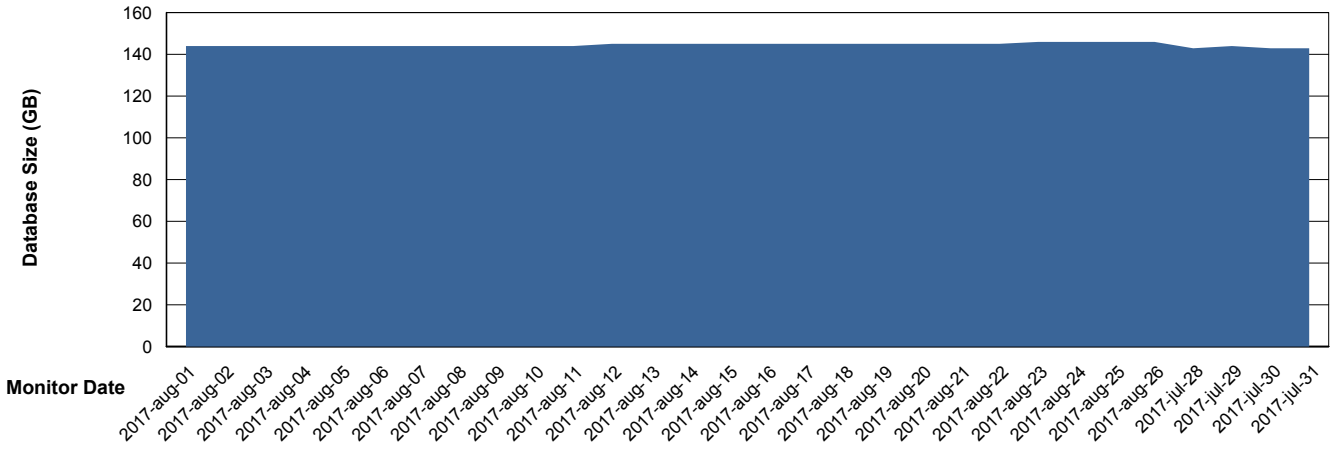
Weekly SLA Customer Report

Customer NIX_Production
 Database ID 51



DATABASE SIZE NIXDB_Production

Database growth over last month



Database Tablespace NIXDB_Production

Date	Tablespace Name	Filesize (Gb)	Usedsize (Gb)	Percentage free
26-8-2017	ABSDATA	63	52	17
	INDX	110	93	15
25-8-2017	ABSDATA	63	51	19
	INDX	110	93	15
24-8-2017	ABSDATA	63	51	19
	INDX	110	93	15
23-8-2017	ABSDATA	63	51	19
	INDX	110	93	15
22-8-2017	ABSDATA	63	51	19
	INDX	110	93	15
21-8-2017	ABSDATA	63	51	19
	INDX	110	93	15
20-8-2017	ABSDATA	63	51	19
	INDX	110	93	15

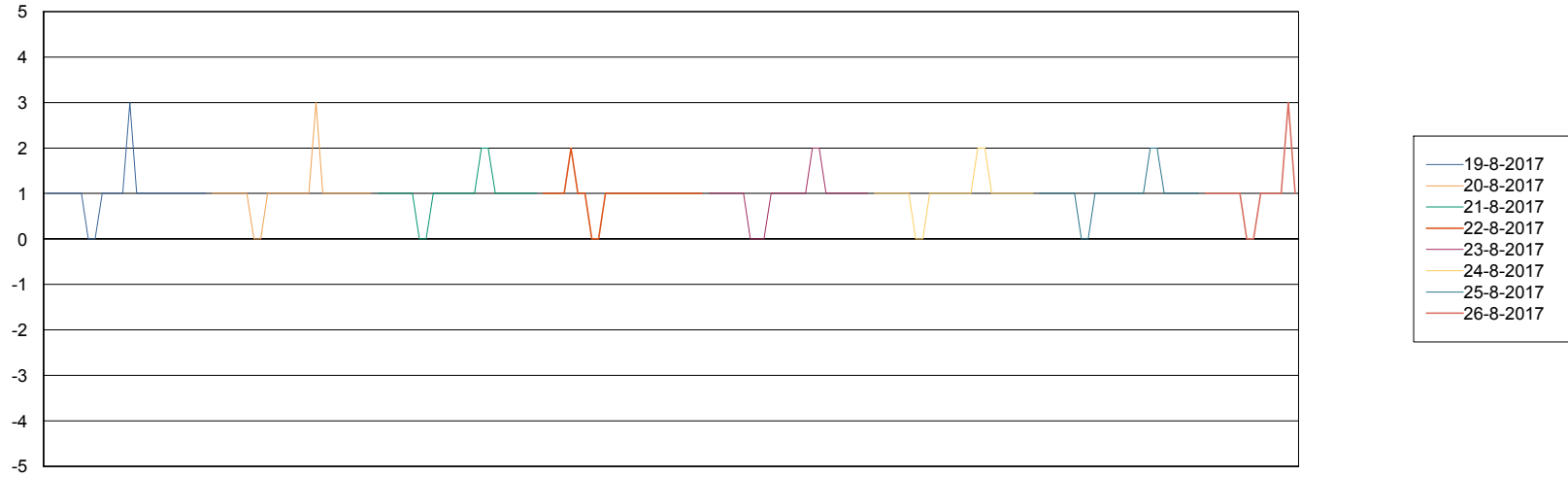
Weekly SLA Customer Report

Customer NIX_Production
Database ID 51



Standby Database Health NIX_Production

Recovery lag for last 7 days



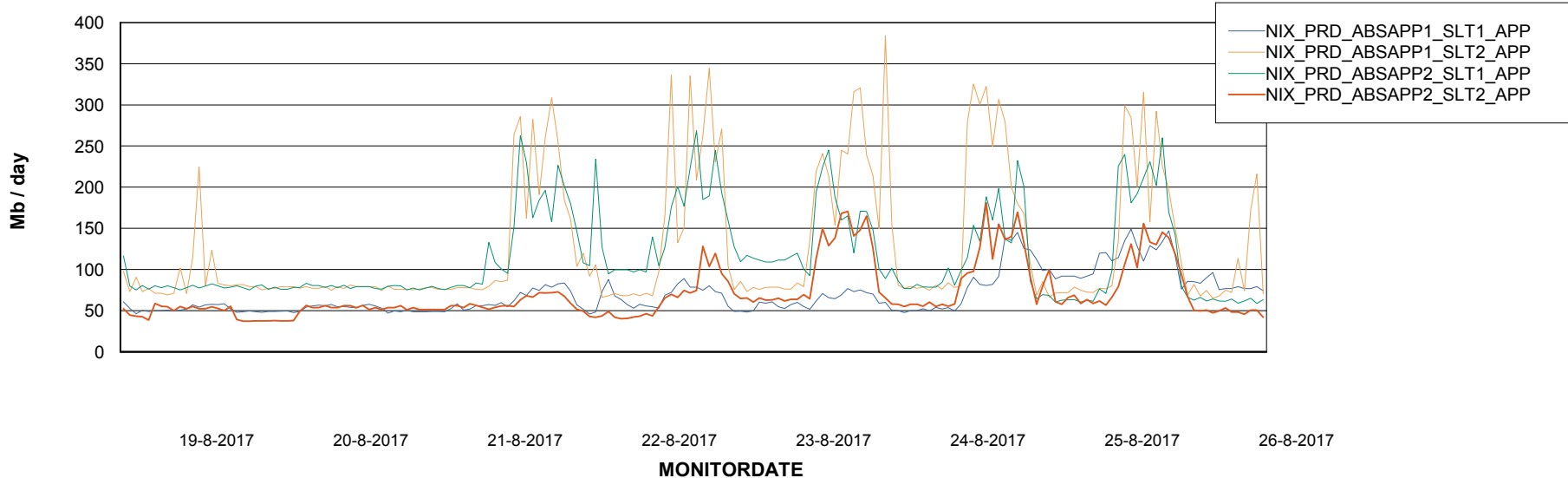
Weekly SLA Customer Report

Customer NIX_Production
Database ID 51

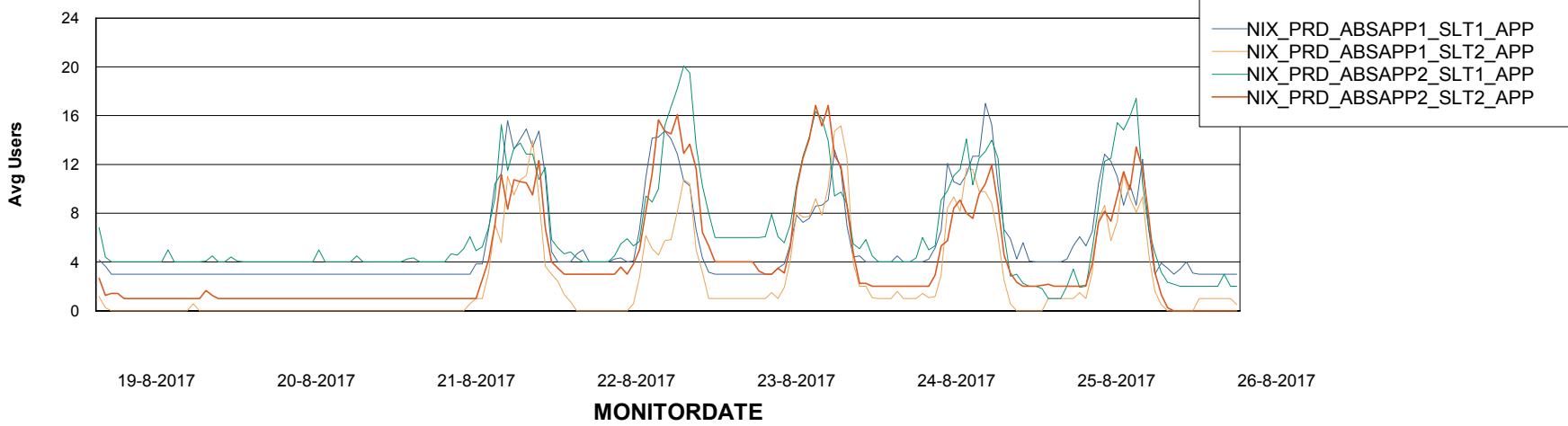


ABSolute Application Server Services

Avg memory used per ABS Server Service



Avg users per day per ABS server



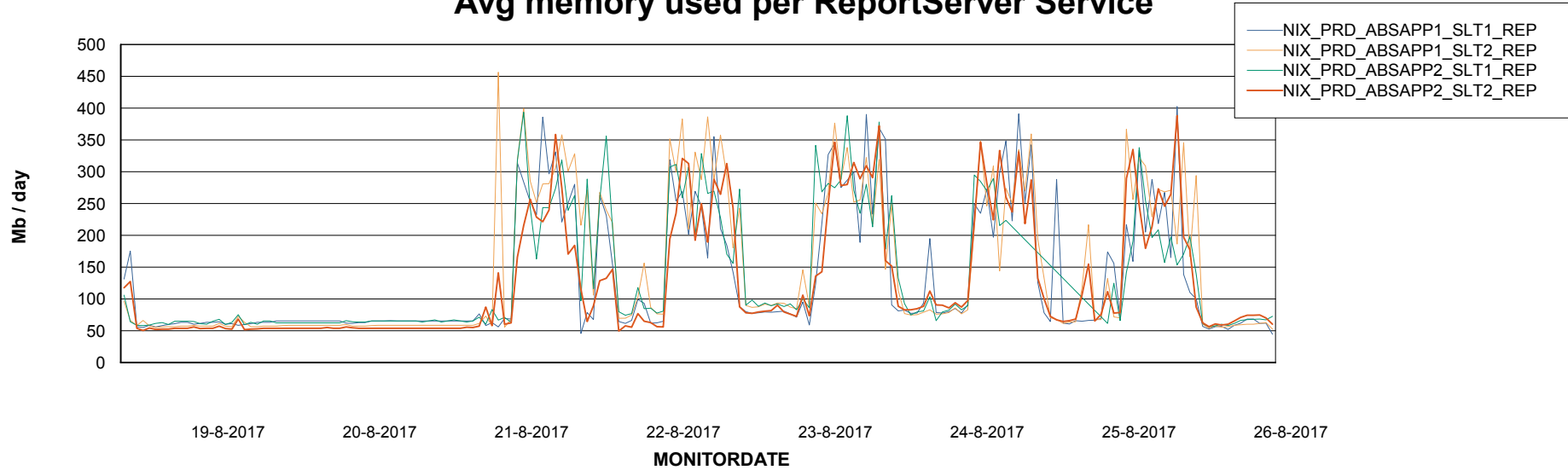
Weekly SLA Customer Report

Customer NIX_Production
Database ID 51



ABSSolute Application ReportServer Services

Avg memory used per ReportServer Service



Disaster per ABS component

