

# Weekly SLA Customer Report

Customer NIX\_Production  
 Database ID 51



Harddisk Usage NIX\_PRD\_ABSAPP02

	Free disk space on c: (%)	Total disk space on c: (Gb)
19-8-2017	84	200
18-8-2017	84	200
17-8-2017	84	200
16-8-2017	84	200
15-8-2017	84	200
14-8-2017	84	200
13-8-2017	84	200

Harddisk Usage NIX\_PRD\_ABSAPP03

	Free disk space on c: (%)	Total disk space on c: (Gb)
19-8-2017	78	200
18-8-2017	78	200
17-8-2017	78	200
16-8-2017	78	200
15-8-2017	78	200
14-8-2017	78	200
13-8-2017	78	200

# Weekly SLA Customer Report

Customer NIX\_Production  
Database ID 51



## Harddisk Usage NIX\_PRD\_ABSWEB01

	Free disk space on c: (%)	Total disk space on c: (Gb)
19-8-2017	90	300
18-8-2017	90	300
17-8-2017	90	300
16-8-2017	90	300
15-8-2017	90	300
14-8-2017	90	300
13-8-2017	91	300

## Harddisk Usage NIX\_PRD\_ORACLE\_B11

	Free disk space on c: (%)	Total disk space on c: (Gb)	Free disk space on e: (%)	Total disk space on e: (Gb)	Free disk space on f: (%)	Total disk space on f: (Gb)	Free disk space on g: (%)	Total disk space on g: (Gb)
19-8-2017	47	279	62	558	37	279	65	558
18-8-2017	48	279	62	558	37	279	61	558
17-8-2017	50	279	62	558	38	279	62	558
16-8-2017	51	279	62	558	37	279	63	558
15-8-2017	52	279	62	558	37	279	64	558
14-8-2017	51	279	62	558	37	279	65	558
13-8-2017	44	279	62	558	37	279	66	558

# Weekly SLA Customer Report

Customer NIX\_Production  
Database ID 51



## Harddisk Usage NIX\_PRD\_ORCDB1

	Free disk space on c: (%)	Total disk space on c: (Gb)	Free disk space on e: (%)	Total disk space on e: (Gb)	Free disk space on f: (%)	Total disk space on f: (Gb)	Free disk space on g: (%)	Total disk space on g: (Gb)
19-8-2017	55	279	74	558	80	558	60	279
18-8-2017	55	279	74	558	80	558	59	279
17-8-2017	55	279	74	558	80	558	59	279
16-8-2017	55	279	74	558	80	558	59	279
15-8-2017	55	279	74	558	80	558	60	279
14-8-2017	55	279	74	558	80	558	60	279
13-8-2017	48	279	74	558	80	558	60	279

## Harddisk Usage NIX\_PRD\_ORCDB2

	Free disk space on c: (%)	Total disk space on c: (Gb)	Free disk space on e: (%)	Total disk space on e: (Gb)	Free disk space on f: (%)	Total disk space on f: (Gb)	Free disk space on g: (%)	Total disk space on g: (Gb)
19-8-2017	55	279	74	558	80	558	60	279
18-8-2017	55	279	74	558	80	558	59	279
17-8-2017	55	279	74	558	80	558	59	279
16-8-2017	55	279	74	558	80	558	59	279
15-8-2017	55	279	74	558	80	558	60	279
14-8-2017	55	279	74	558	80	558	60	279
13-8-2017	48	279	74	558	80	558	60	279

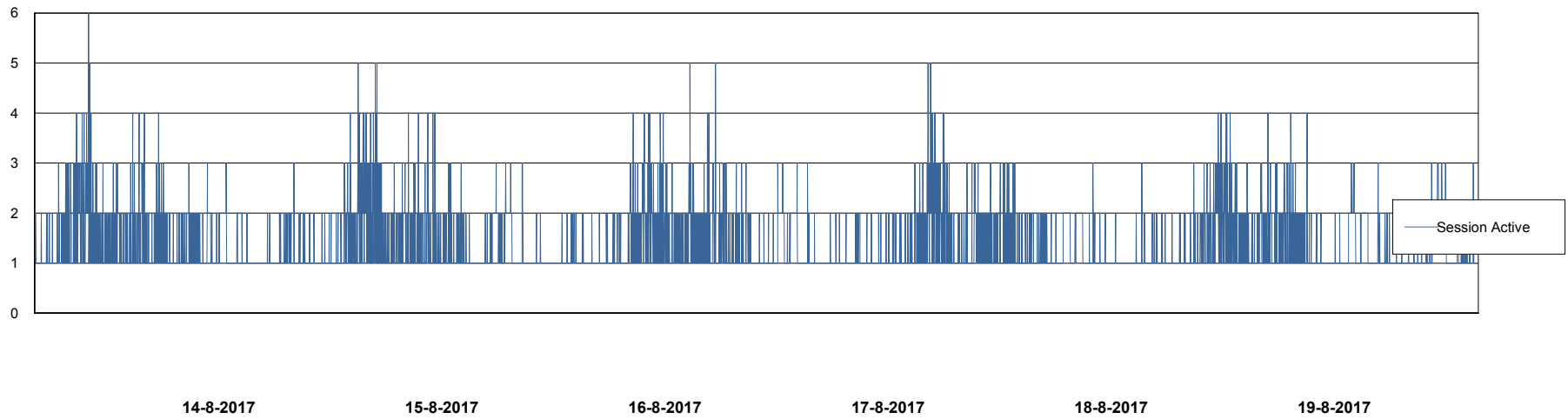
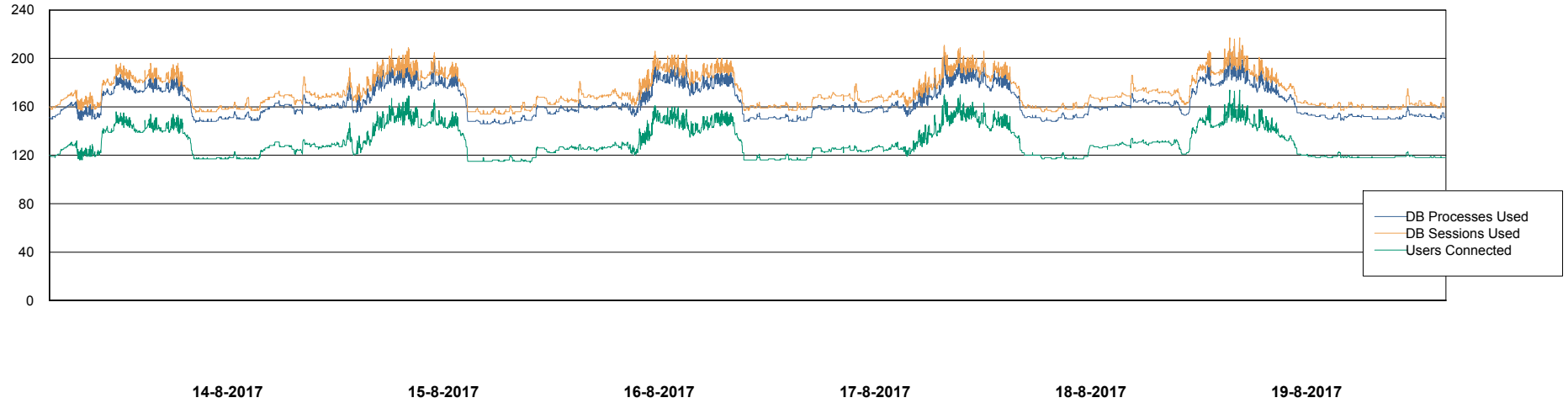
# Weekly SLA Customer Report

Customer NIX\_Production  
Database ID 51



## Database Performance NIXDB\_Production

DB Processes Max 500  
DB Sessions Max 800



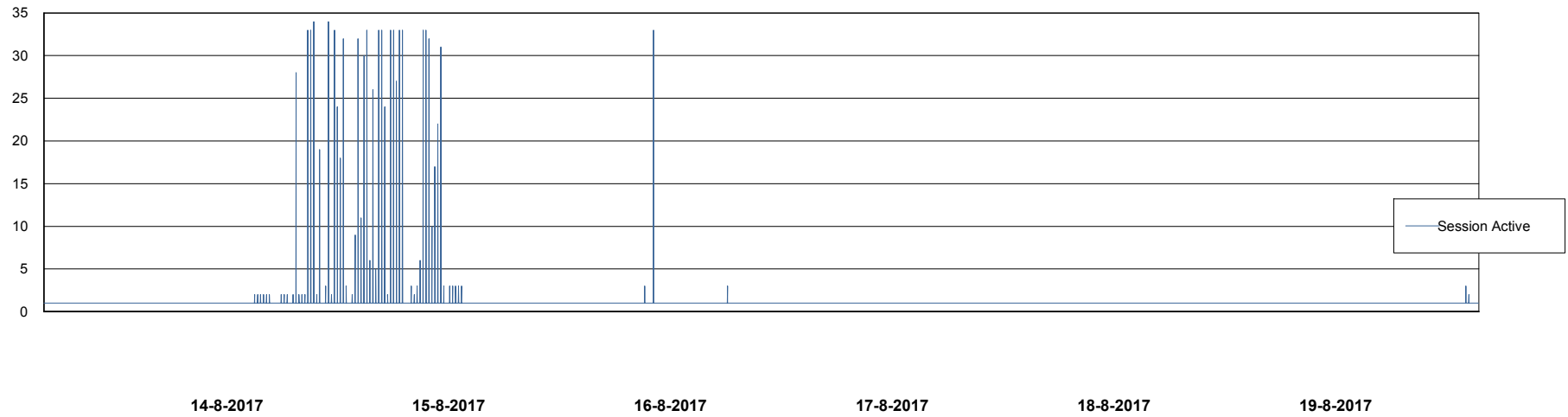
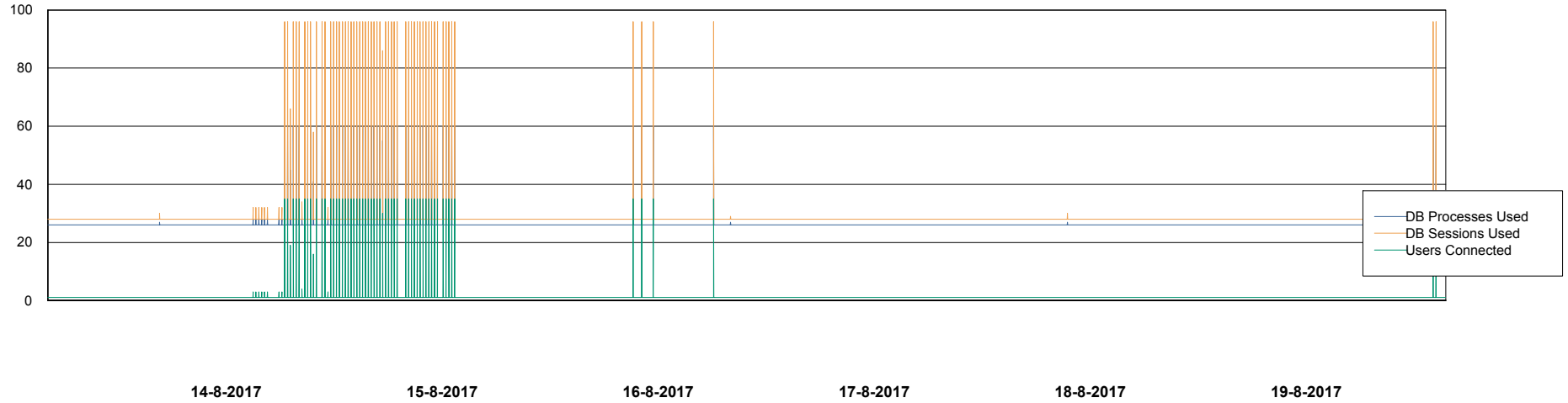
# Weekly SLA Customer Report

Customer NIX\_Production  
Database ID 51



## Database Performance NIXDB\_Standby

DB Processes Max 500  
DB Sessions Max 800



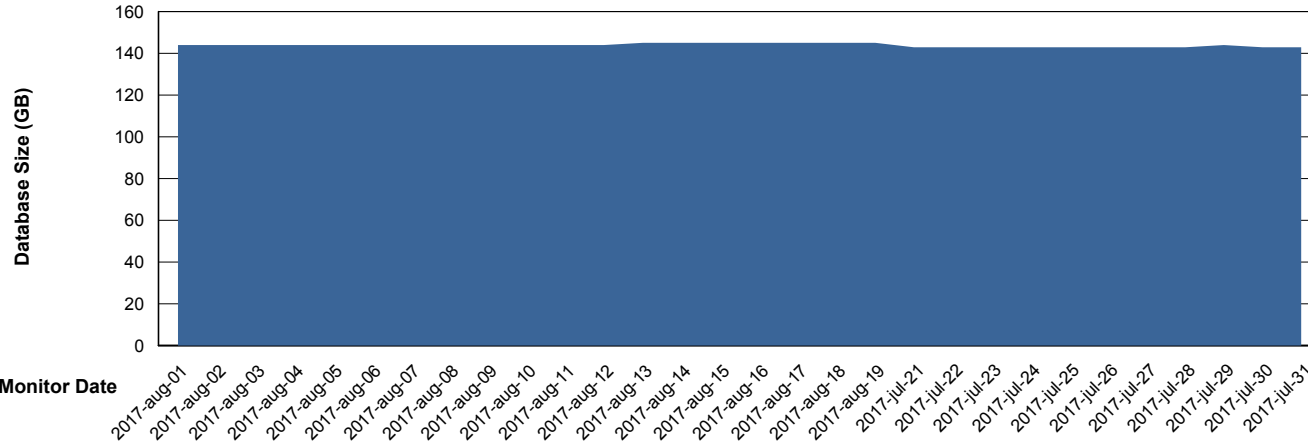
# Weekly SLA Customer Report

Customer NIX\_Production  
 Database ID 51



DATABASE SIZE NIXDB\_Production

Database growth over last month



Database Tablespace NIXDB\_Production

Date	Tablespace Name	Filesize (Gb)	Usedsize (Gb)	Percentage free
19-8-2017	ABSDATA	63	51	19
	INDX	110	93	15
18-8-2017	ABSDATA	63	51	19
	INDX	110	92	16
17-8-2017	ABSDATA	63	51	19
	INDX	110	92	16
16-8-2017	ABSDATA	63	51	19
	INDX	110	92	16
15-8-2017	ABSDATA	63	51	19
	INDX	110	92	16
14-8-2017	ABSDATA	63	51	19
	INDX	110	92	16
13-8-2017	ABSDATA	63	51	19
	INDX	110	92	16

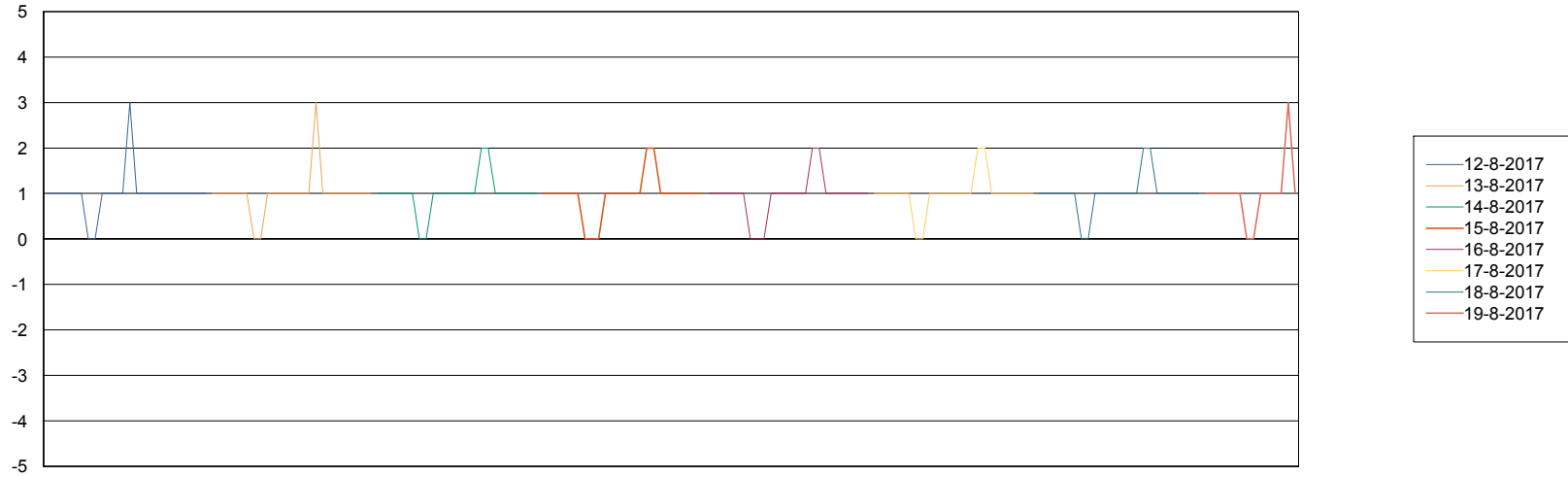
# Weekly SLA Customer Report

Customer NIX\_Production  
Database ID 51



Standby Database Health NIX\_Production

## Recovery lag for last 7 days



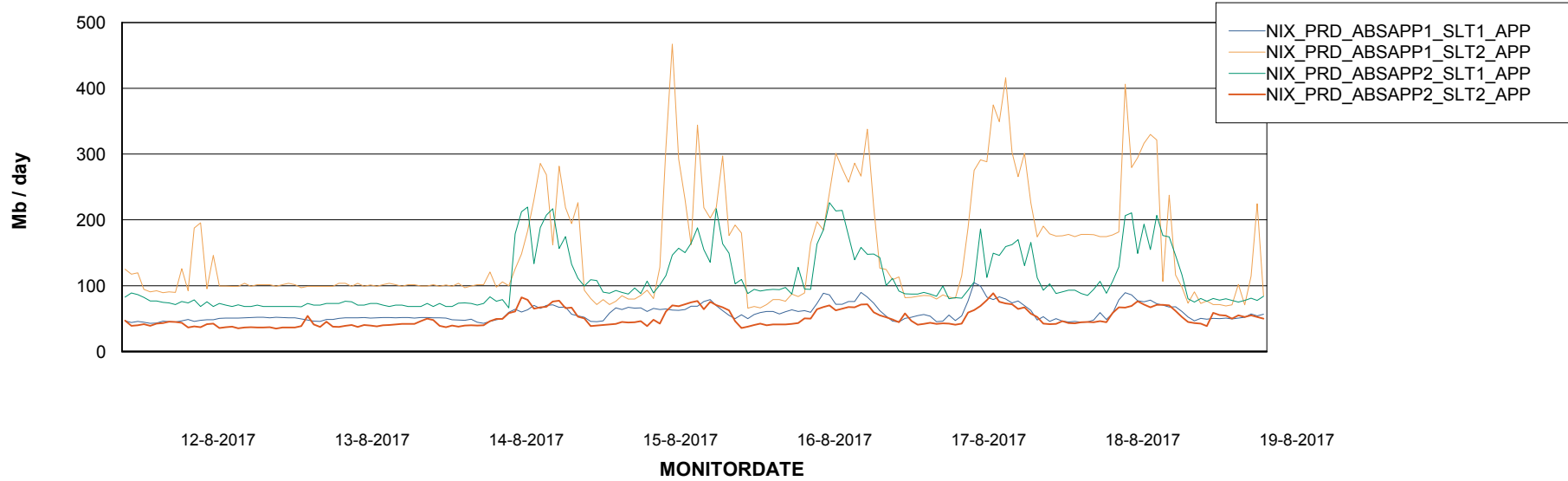
# Weekly SLA Customer Report

Customer NIX\_Production  
Database ID 51

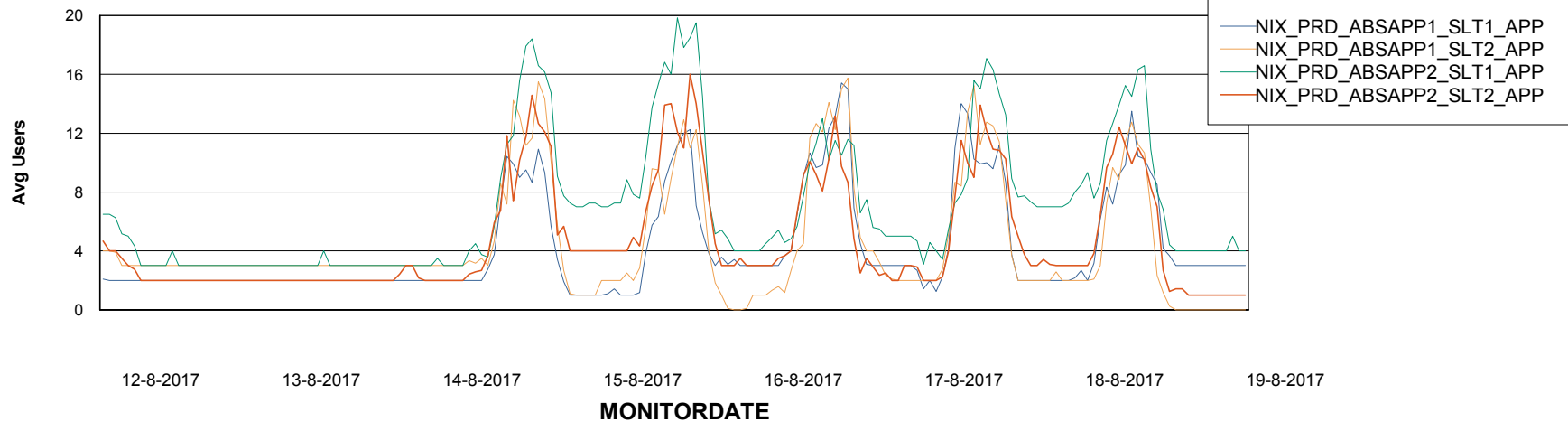


## ABSolute Application Server Services

### Avg memory used per ABS Server Service



### Avg users per day per ABS server



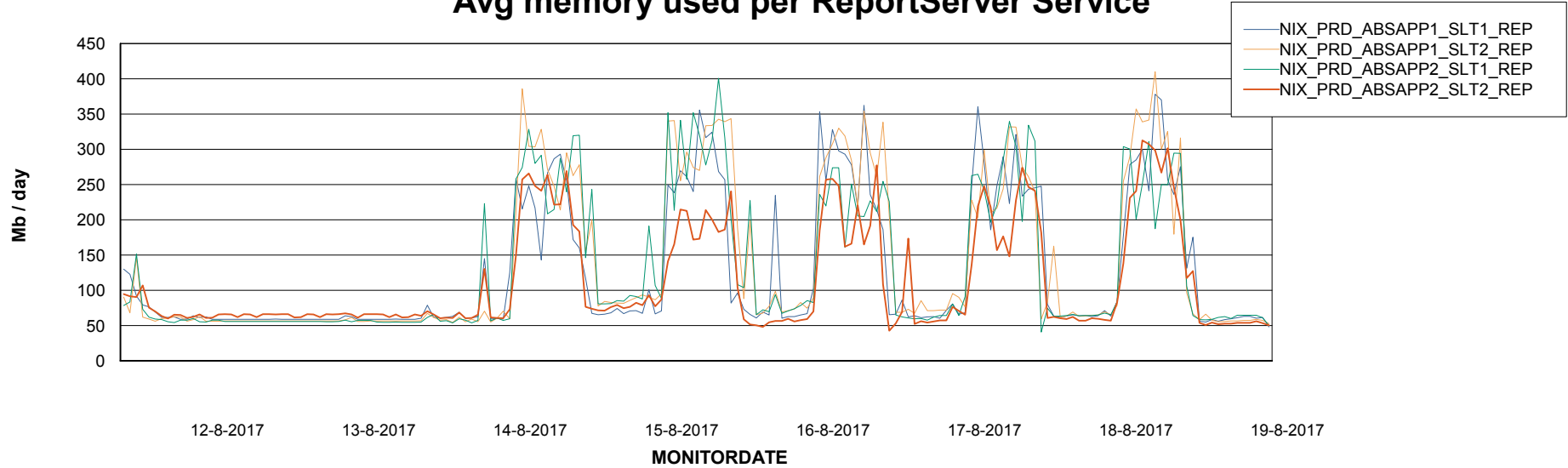
# Weekly SLA Customer Report

Customer NIX\_Production  
Database ID 51



## ABSSolute Application ReportServer Services

### Avg memory used per ReportServer Service



### Disaster per ABS component

