

# Weekly SLA Customer Report

Customer NIX\_Production  
Database ID 51



Harddisk Usage NIX\_PRD\_ABSAPP02

	Free disk space on c: (%)	Total disk space on c: (Gb)
5-8-2017	84	200
4-8-2017	84	200
3-8-2017	84	200
2-8-2017	84	200
1-8-2017	84	200
31-7-2017	84	200
30-7-2017	84	200

Harddisk Usage NIX\_PRD\_ABSAPP03

	Free disk space on c: (%)	Total disk space on c: (Gb)
5-8-2017	78	200
4-8-2017	78	200
3-8-2017	78	200
2-8-2017	78	200
1-8-2017	78	200
31-7-2017	78	200
30-7-2017	78	200

# Weekly SLA Customer Report

Customer NIX\_Production  
Database ID 51



## Harddisk Usage NIX\_PRD\_ABSWEB01

	Free disk space on c: (%)	Total disk space on c: (Gb)
5-8-2017	91	300
4-8-2017	91	300
3-8-2017	91	300
2-8-2017	91	300
1-8-2017	91	300
31-7-2017	91	300
30-7-2017	91	300

## Harddisk Usage NIX\_PRD\_ORACLE\_B11

	Free disk space on c: (%)	Total disk space on c: (Gb)	Free disk space on e: (%)	Total disk space on e: (Gb)	Free disk space on f: (%)	Total disk space on f: (Gb)	Free disk space on g: (%)	Total disk space on g: (Gb)
5-8-2017	46	279	63	558	37	279	65	558
4-8-2017	46	279	63	558	37	279	61	558
3-8-2017	46	279	63	558	38	279	62	558
2-8-2017	46	279	63	558	38	279	63	558
1-8-2017	46	279	63	558	37	279	64	558
31-7-2017	51	279	63	558	37	279	65	558
30-7-2017	45	279	63	558	37	279	66	558

# Weekly SLA Customer Report

Customer NIX\_Production  
Database ID 51



## Harddisk Usage NIX\_PRD\_ORCDB1

	Free disk space on c: (%)	Total disk space on c: (Gb)	Free disk space on e: (%)	Total disk space on e: (Gb)	Free disk space on f: (%)	Total disk space on f: (Gb)	Free disk space on g: (%)	Total disk space on g: (Gb)
5-8-2017	40	279	74	558	80	558	59	279
4-8-2017	40	279	74	558	80	558	59	279
3-8-2017	40	279	75	558	81	558	60	279
2-8-2017	40	279	75	558	81	558	60	279
1-8-2017	47	279	75	558	81	558	61	279
31-7-2017	56	279	75	558	81	558	61	279
30-7-2017	56	279	75	558	81	558	61	279

## Harddisk Usage NIX\_PRD\_ORCDB2

	Free disk space on c: (%)	Total disk space on c: (Gb)	Free disk space on e: (%)	Total disk space on e: (Gb)	Free disk space on f: (%)	Total disk space on f: (Gb)	Free disk space on g: (%)	Total disk space on g: (Gb)
5-8-2017	40	279	74	558	80	558	59	279
4-8-2017	40	279	74	558	80	558	59	279
3-8-2017	40	279	75	558	81	558	60	279
2-8-2017	40	279	75	558	81	558	60	279
1-8-2017	47	279	75	558	81	558	61	279
31-7-2017	56	279	75	558	81	558	61	279
30-7-2017	56	279	75	558	81	558	61	279

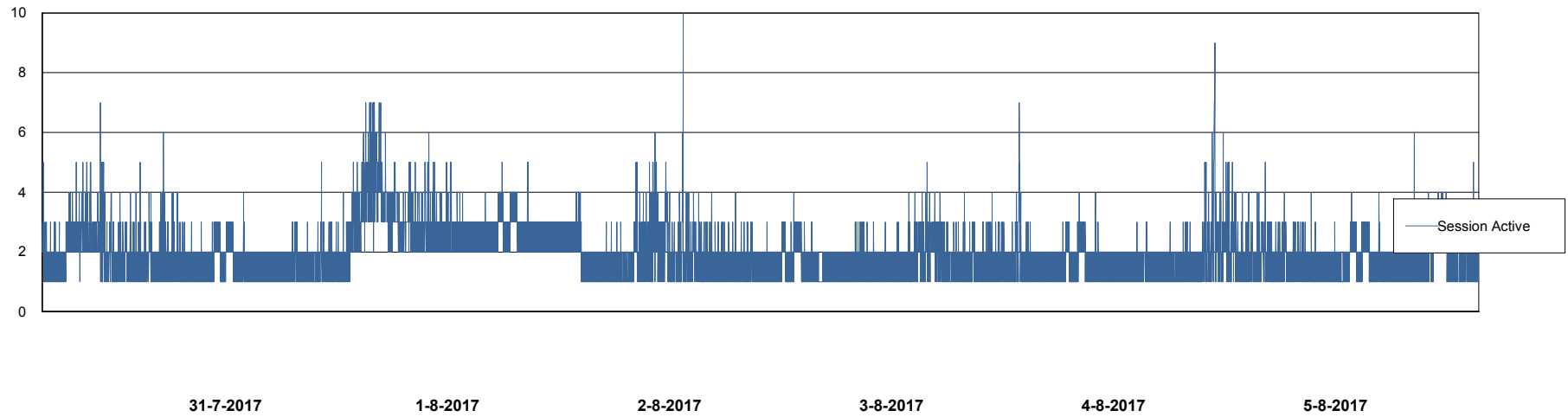
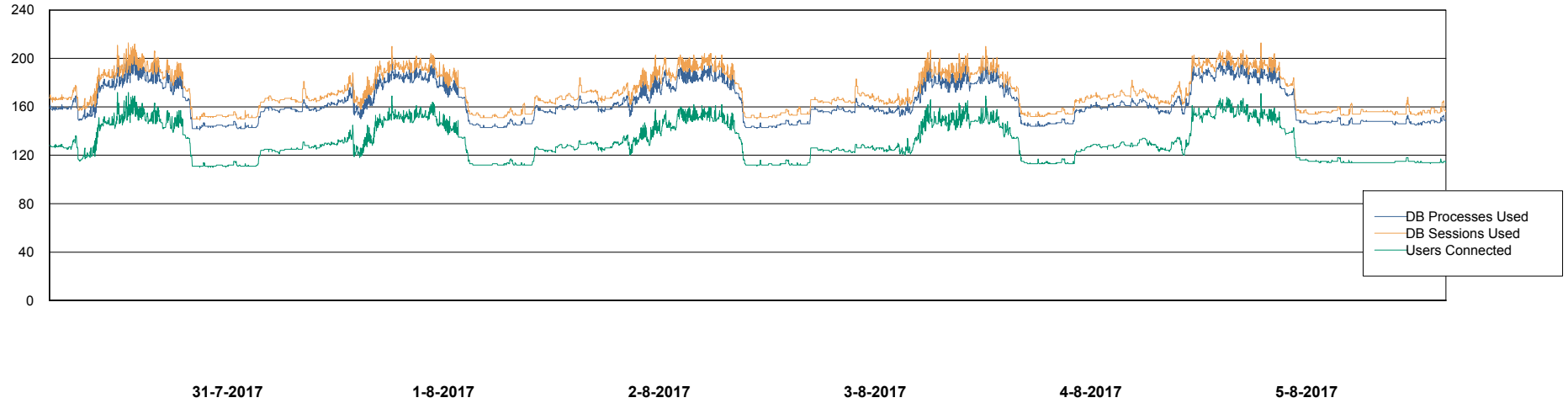
# Weekly SLA Customer Report

Customer NIX\_Production  
Database ID 51



## Database Performance NIXDB\_Production

DB Processes Max 500  
DB Sessions Max 800



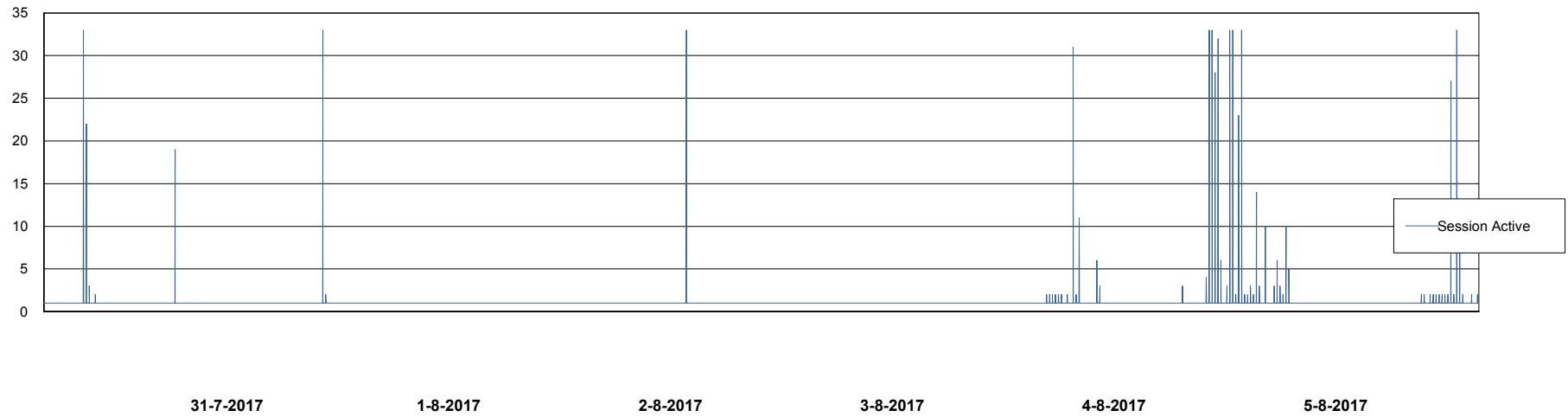
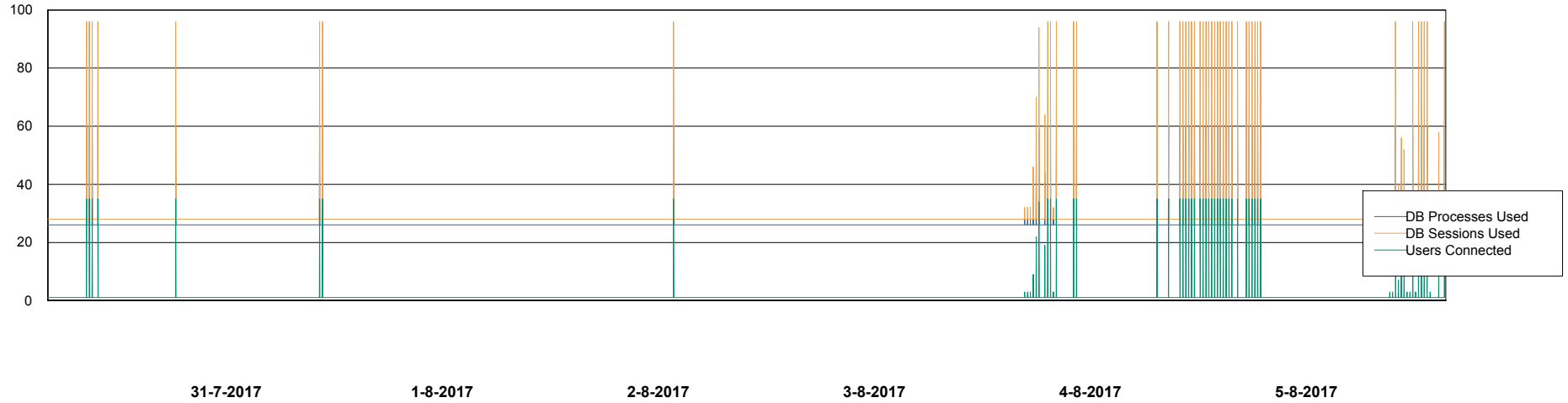
# Weekly SLA Customer Report

Customer NIX\_Production  
Database ID 51



## Database Performance NIXDB\_Standby

DB Processes Max 500  
DB Sessions Max 800



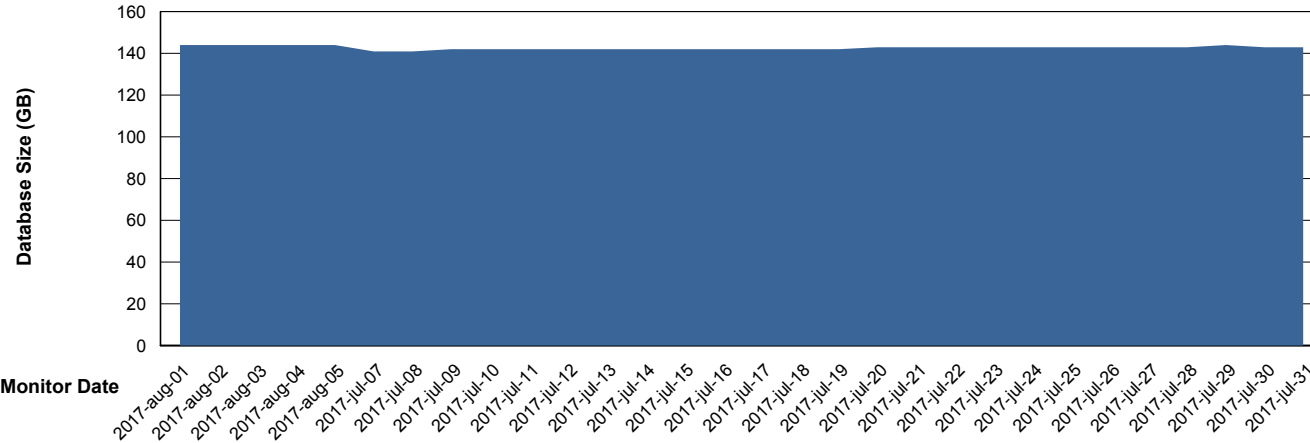
# Weekly SLA Customer Report

Customer NIX\_Production  
 Database ID 51



DATABASE SIZE NIXDB\_Production

Database growth over last month



Database Tablespace NIXDB\_Production

Date	Tablespace Name	Filesize (Gb)	Usedsize (Gb)	Percentage free
5-8-2017	ABSDATA	63	51	19
	INDX	110	91	17
4-8-2017	ABSDATA	63	51	19
	INDX	110	91	17
3-8-2017	ABSDATA	63	51	19
	INDX	110	91	17
2-8-2017	ABSDATA	59	51	14
	INDX	105	91	13
1-8-2017	ABSDATA	59	51	14
	INDX	105	91	13
31-7-2017	ABSDATA	59	51	14
	INDX	105	91	13
30-7-2017	ABSDATA	59	51	14
	INDX	105	91	13

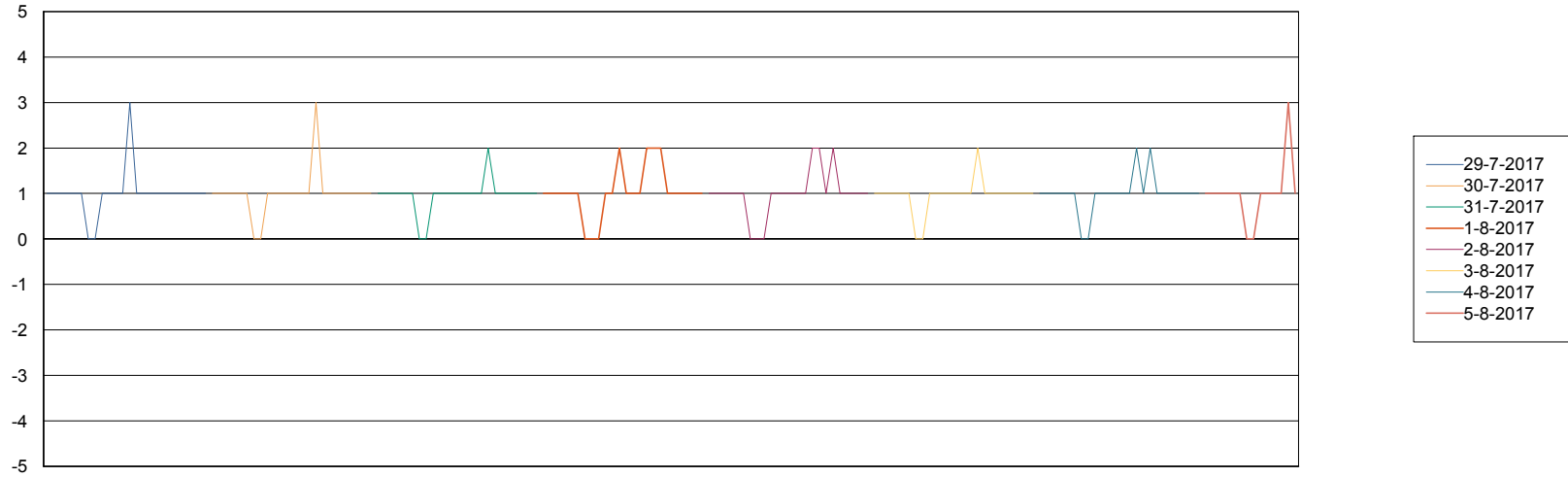
# Weekly SLA Customer Report

Customer NIX\_Production  
Database ID 51



Standby Database Health NIX\_Production

## Recovery lag for last 7 days



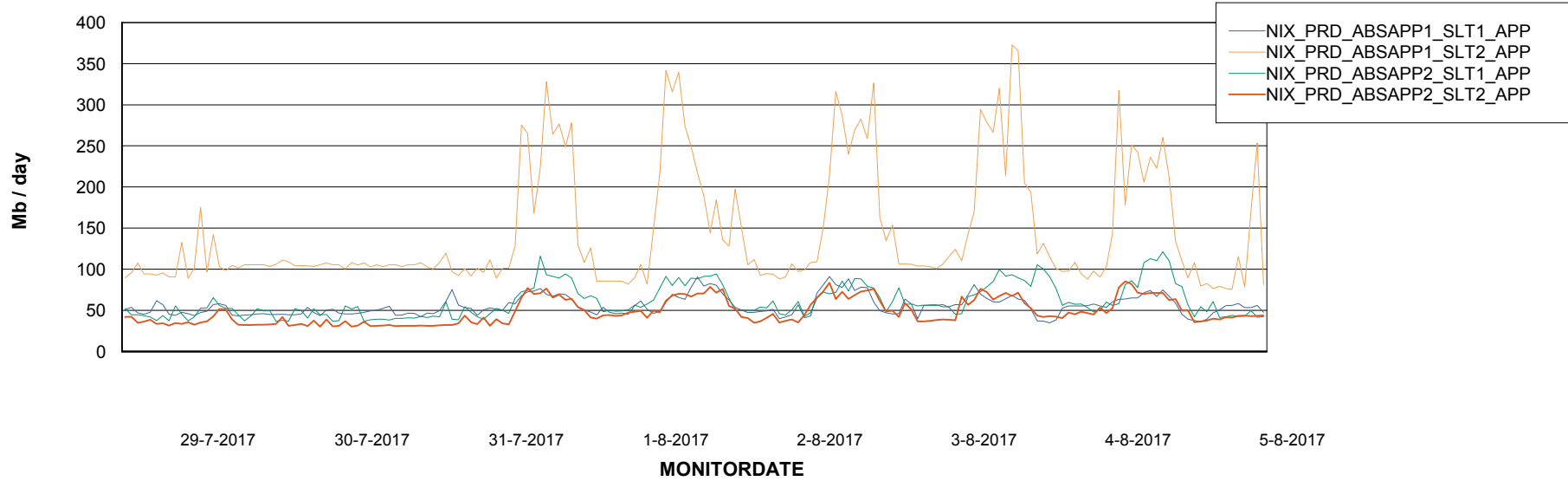
# Weekly SLA Customer Report

Customer NIX\_Production  
Database ID 51

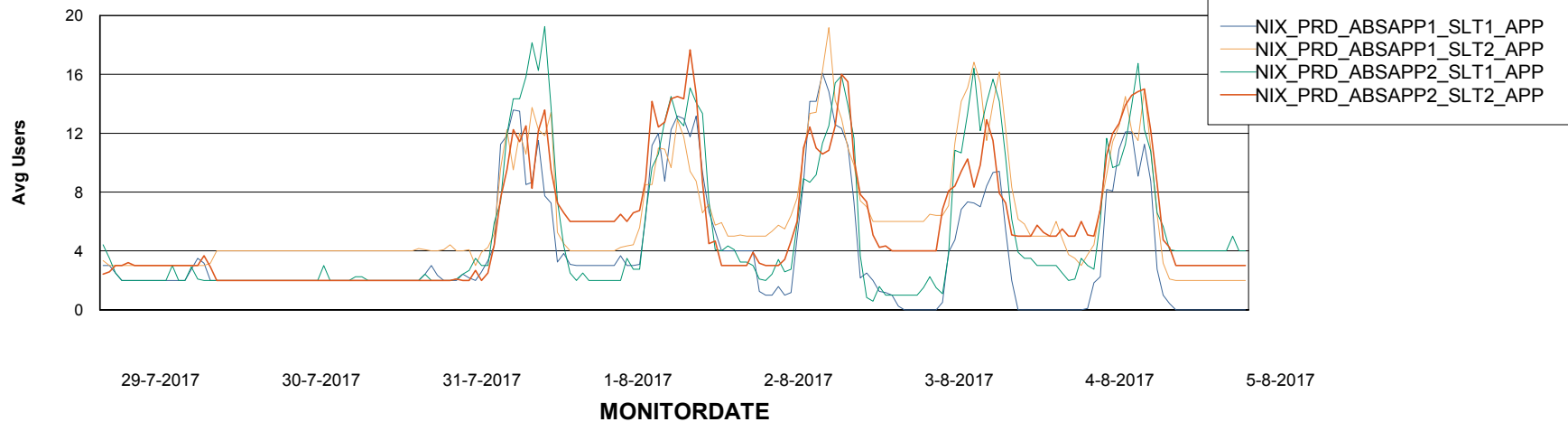


## ABSSolute Application Server Services

### Avg memory used per ABS Server Service



### Avg users per day per ABS server



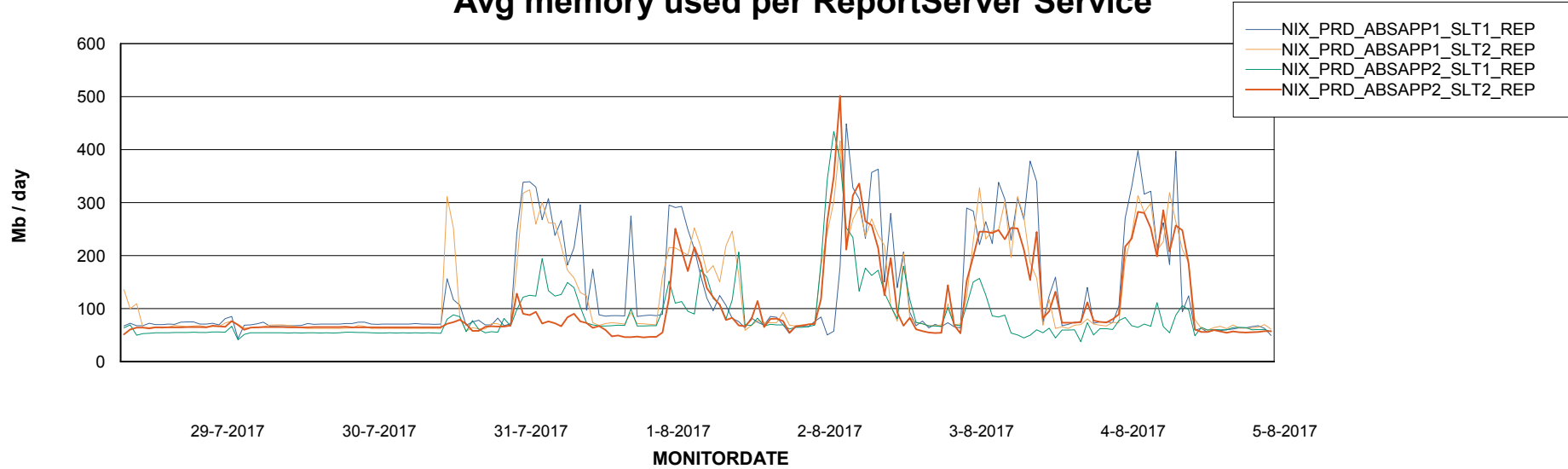
# Weekly SLA Customer Report

Customer NIX\_Production  
Database ID 51



## ABSSolute Application ReportServer Services

### Avg memory used per ReportServer Service



### Disaster per ABS component

