

# Weekly SLA Customer Report

Customer PHS\_Production  
Database ID 47



## Harddisk Usage PHS\_BI\_GCAB779a

	Free disk space on c: (%)	Total disk space on c: (Gb)	Free disk space on d: (%)	Total disk space on d: (Gb)
29-7-2017	18	150	15	150
28-7-2017	18	150	15	150
27-7-2017	18	150	15	150
26-7-2017	18	150	15	150
25-7-2017	18	150	15	150
24-7-2017	18	150	15	150
23-7-2017	18	150	15	150

## Harddisk Usage PHS\_PRD\_GCAB574b

	Free disk space on c: (%)	Total disk space on c: (Gb)	Free disk space on d: (%)	Total disk space on d: (Gb)	Free disk space on f: (%)	Total disk space on f: (Gb)
29-7-2017	77	150	43	300	51	200
28-7-2017	77	150	43	300	54	200
27-7-2017	77	150	43	300	54	200
26-7-2017	77	150	43	300	53	200
25-7-2017	77	150	43	300	53	200
24-7-2017	77	150	43	300	53	200
23-7-2017	77	150	43	300	55	200

# Weekly SLA Customer Report

Customer PHS\_Production  
 Database ID 47



Harddisk Usage PHS\_PRD\_GCAB576b

	Free disk space on c: (%)	Total disk space on c: (Gb)	Free disk space on d: (%)	Total disk space on d: (Gb)	Free disk space on f: (%)	Total disk space on f: (Gb)
29-7-2017	79	150	46	300	78	100
28-7-2017	79	150	46	300	78	100
27-7-2017	79	150	46	300	78	100
26-7-2017	79	150	46	300	78	100
25-7-2017	79	150	46	300	78	100
24-7-2017	79	150	46	300	75	100
23-7-2017	79	150	46	300	79	100

Harddisk Usage PHS\_PRDWEB\_DCAB573b

	Free disk space on c: (%)	Total disk space on c: (Gb)
29-7-2017	84	100
28-7-2017	84	100
27-7-2017	84	100
26-7-2017	84	100
25-7-2017	84	100
24-7-2017	84	100
23-7-2017	84	100

# Weekly SLA Customer Report

Customer PHS\_Production  
 Database ID 47



Harddisk Usage PHS\_TST\_GCAB575b

	Free disk space on c: (%)	Total disk space on c: (Gb)	Free disk space on d: (%)	Total disk space on d: (Gb)
29-7-2017	18	50	44	300
28-7-2017	18	50	44	300
27-7-2017	18	50	44	300
26-7-2017	18	50	44	300
25-7-2017	18	50	44	300
24-7-2017	18	50	44	300
23-7-2017	18	50	44	300

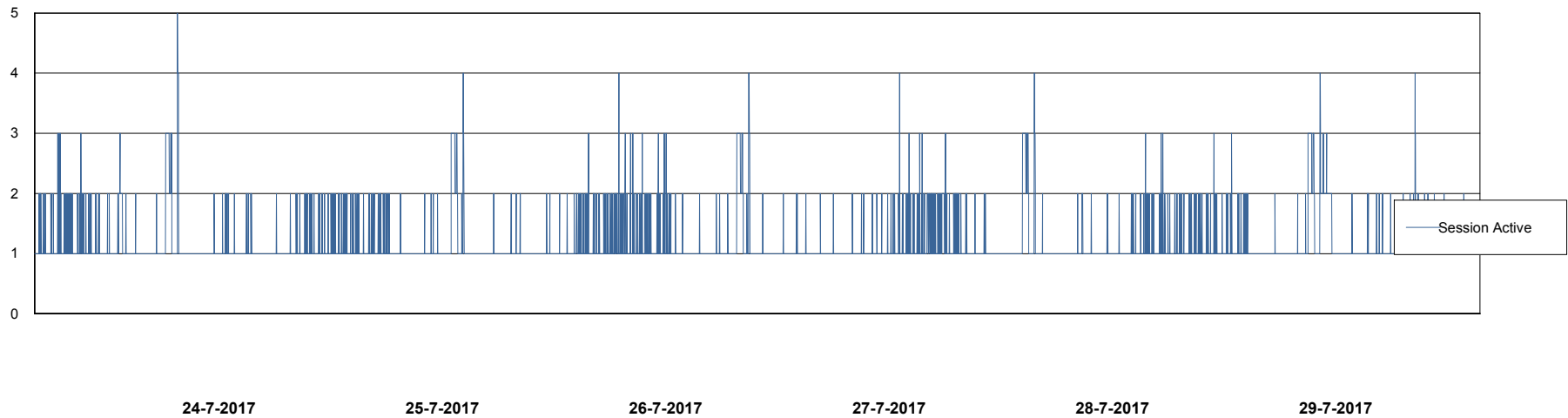
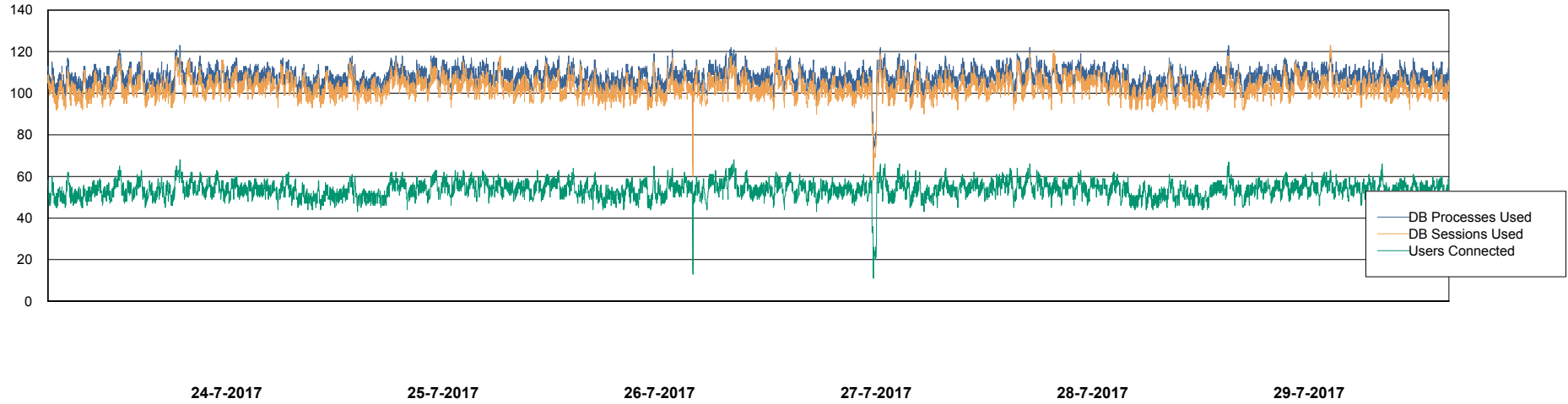
# Weekly SLA Customer Report

Customer PHS\_Production  
Database ID 47



## Database Performance PHSDB\_Production

DB Processes Max 500  
DB Sessions Max 772



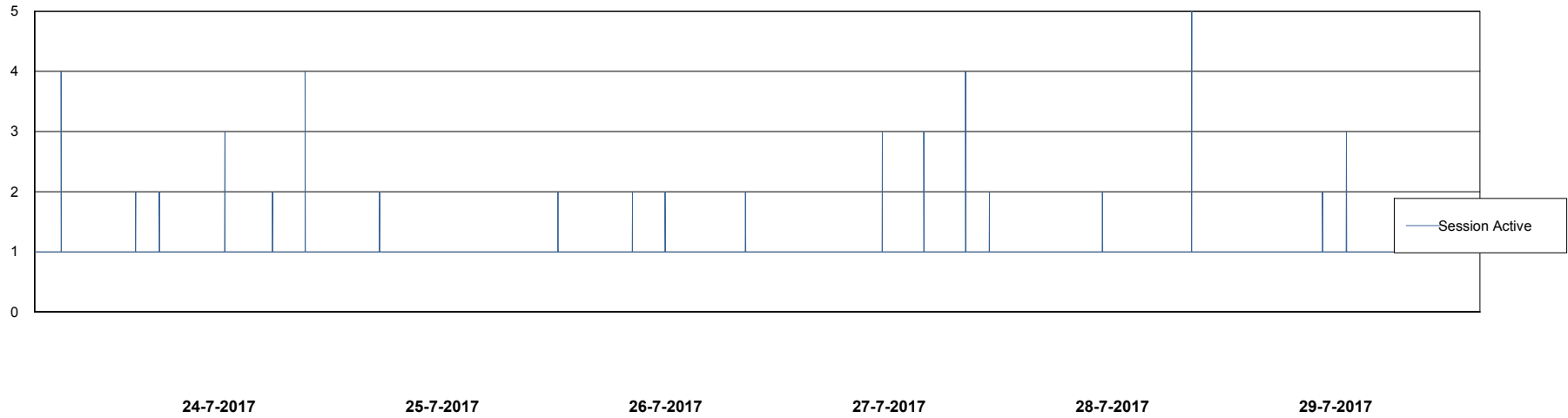
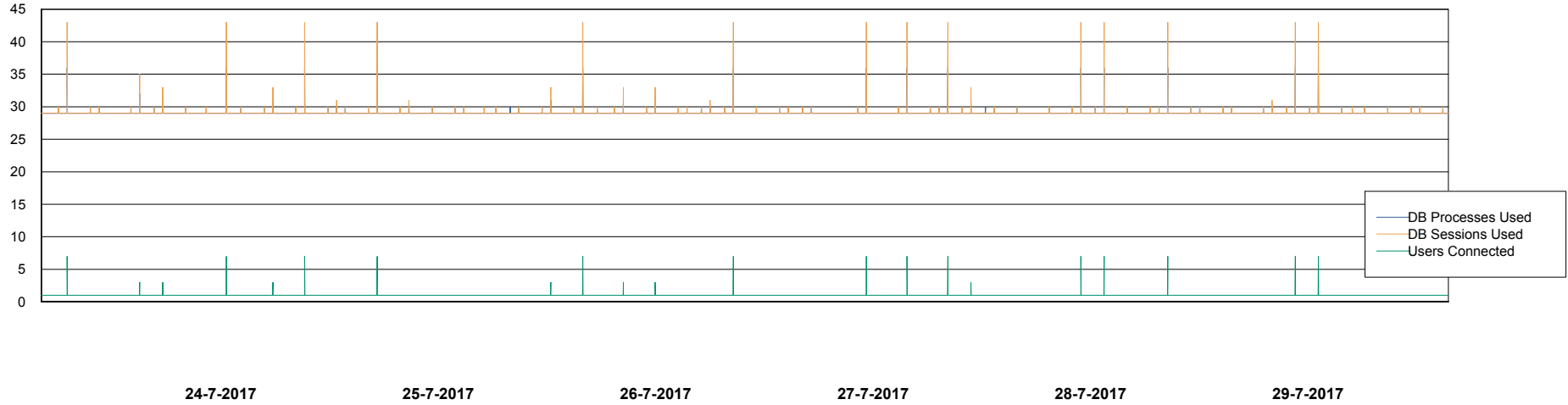
# Weekly SLA Customer Report

Customer PHS\_Production  
Database ID 47



## Database Performance PHSDB\_Standby

DB Processes Max 500  
DB Sessions Max 772



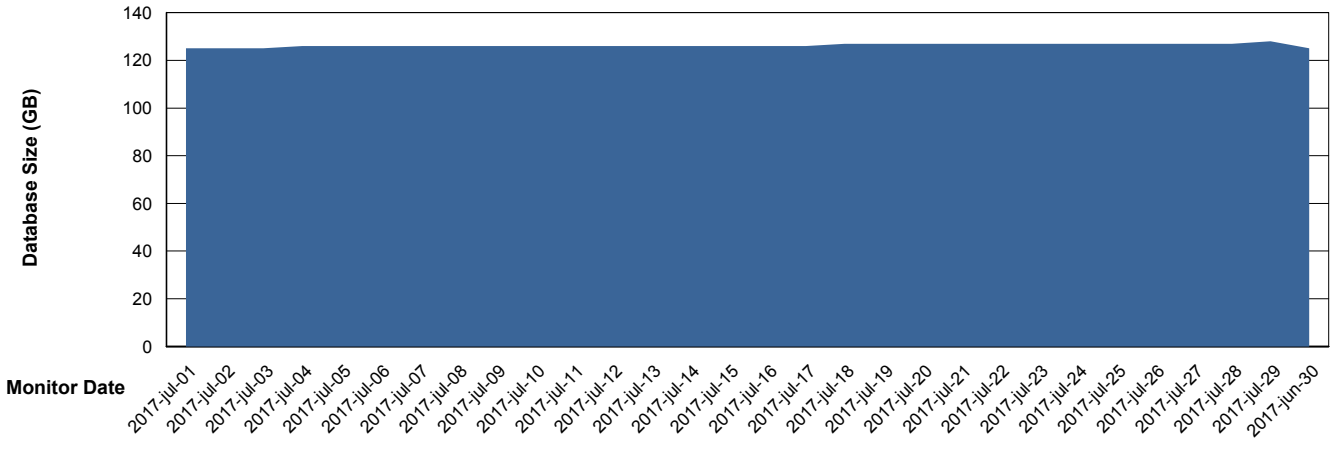
# Weekly SLA Customer Report

Customer PHS\_Production  
 Database ID 47



DATABASE SIZE PHSDB\_Production

## Database growth over last month



Database Tablespace PHSDB\_Production

Date	Tablespace Name	Filesize (Gb)	Usedsize (Gb)	Percentage free
29-7-2017	ABSDATA	146	122	16
	INDX	5	3	40
28-7-2017	ABSDATA	146	122	16
	INDX	5	3	40
27-7-2017	ABSDATA	146	122	16
	INDX	5	3	40
26-7-2017	ABSDATA	146	122	16
	INDX	5	3	40
25-7-2017	ABSDATA	146	122	16
	INDX	5	3	40
24-7-2017	ABSDATA	146	122	16
	INDX	5	3	40
23-7-2017	ABSDATA	146	122	16
	INDX	5	3	40

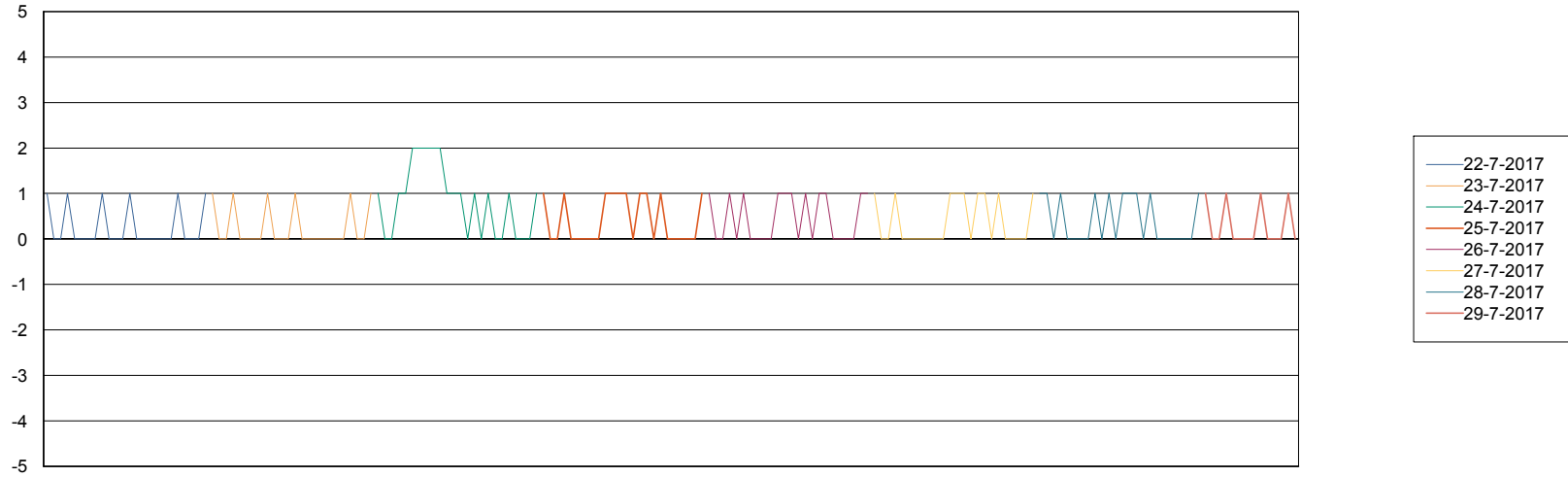
# Weekly SLA Customer Report

Customer PHS\_Production  
Database ID 47



Standby Database Health PHS\_Production

## Recovery lag for last 7 days



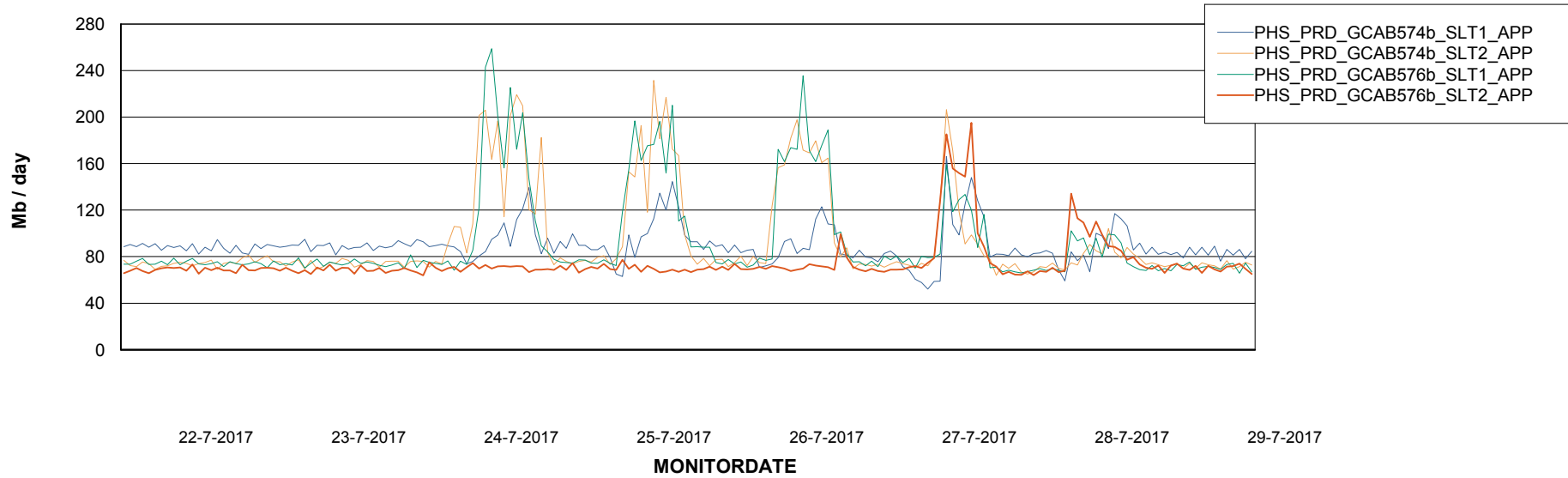
# Weekly SLA Customer Report

Customer PHS\_Production  
Database ID 47

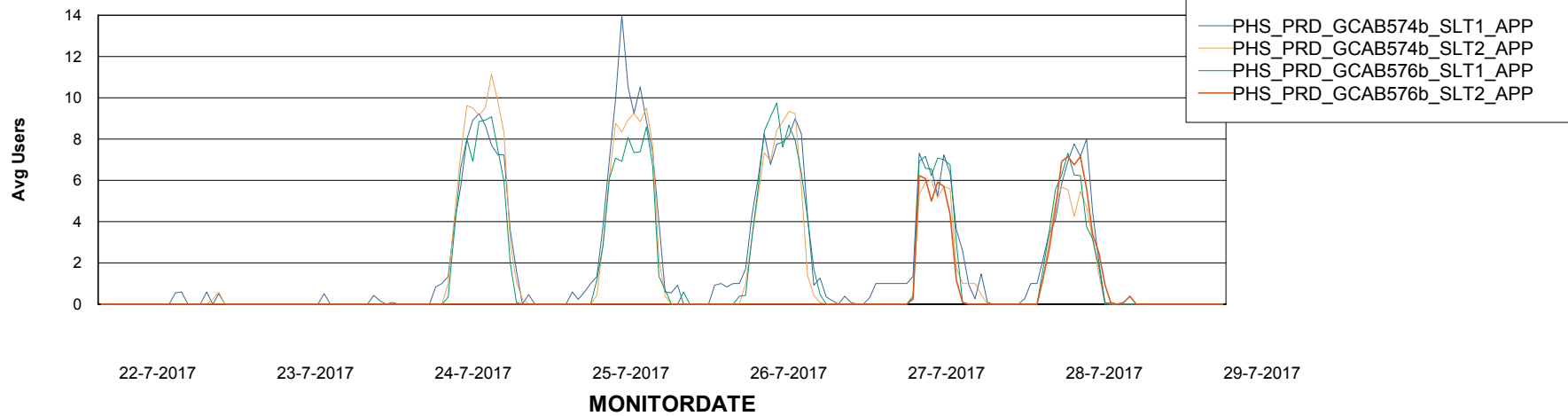


## ABSSolute Application Server Services

### Avg memory used per ABS Server Service



### Avg users per day per ABS server



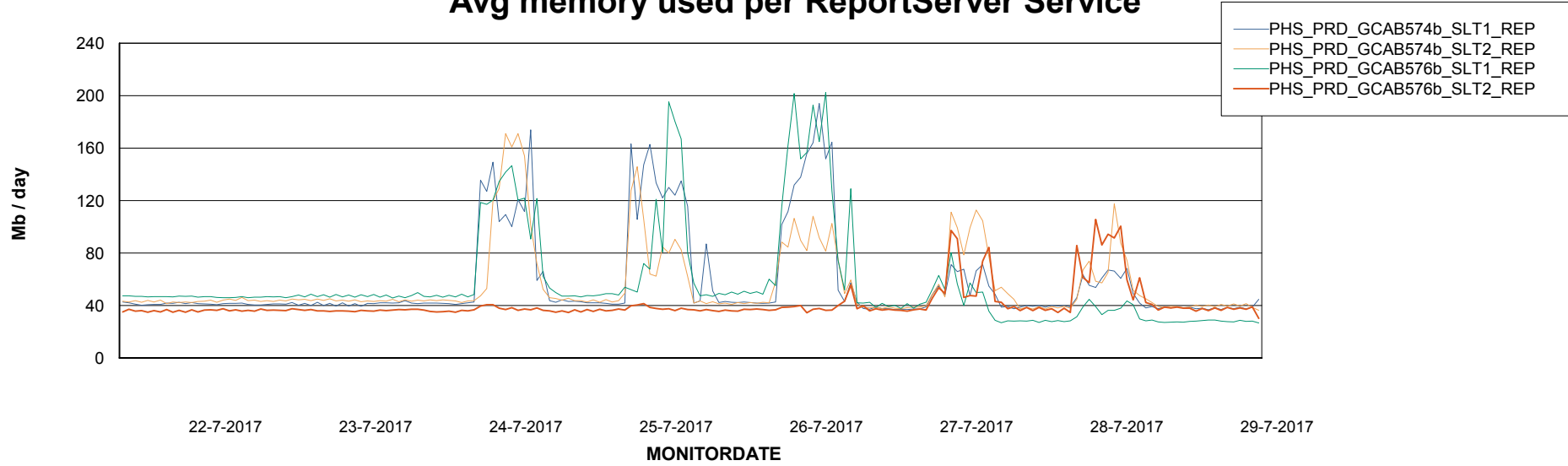
# Weekly SLA Customer Report

Customer PHS\_Production  
Database ID 47



## ABSSolute Application ReportServer Services

### Avg memory used per ReportServer Service



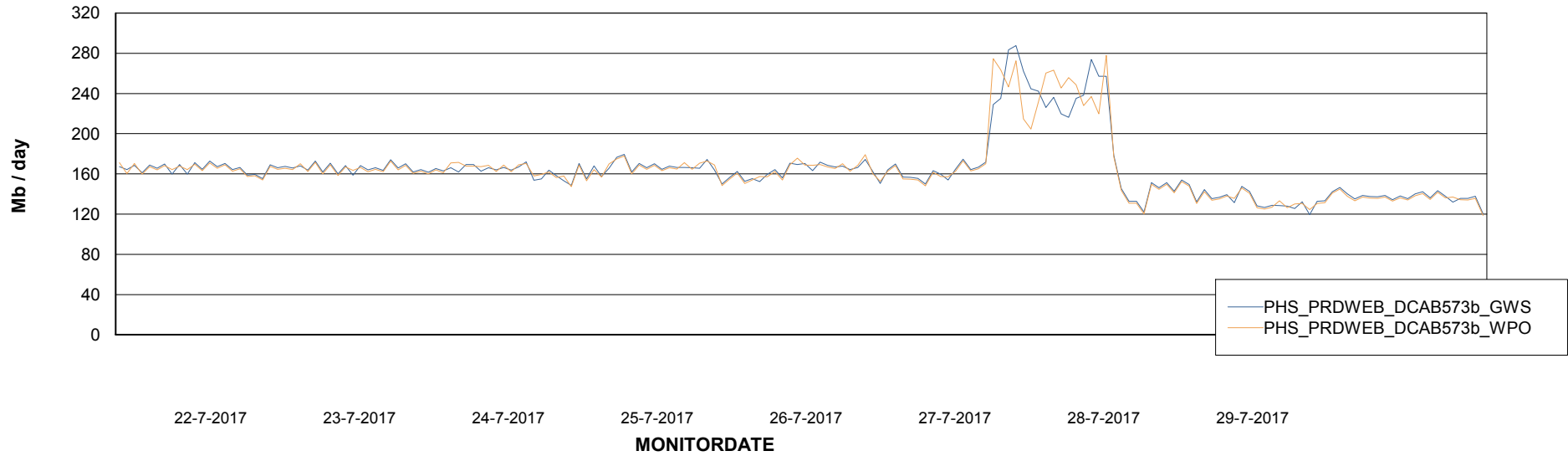
# Weekly SLA Customer Report

Customer PHS\_Production  
Database ID 47



## ABSSolute Web Component Services

### Avg memory used per ABS Web component



# Weekly SLA Customer Report

Customer PHS\_Production  
Database ID 47



## Disaster per ABS component

