

Weekly SLA Customer Report

Customer NIX_Production
 Database ID 51



Harddisk Usage NIX_PRD_ABSAPP02

	Free disk space on c: (%)	Total disk space on c: (Gb)
5-7-2017	85	200
4-7-2017	85	200
3-7-2017	85	200
2-7-2017	85	200
1-7-2017	85	200
30-6-2017	85	200
29-6-2017	85	200

Harddisk Usage NIX_PRD_ABSAPP03

	Free disk space on c: (%)	Total disk space on c: (Gb)
5-7-2017	79	200
4-7-2017	79	200
3-7-2017	79	200
2-7-2017	79	200
1-7-2017	79	200
30-6-2017	79	200
29-6-2017	80	200

Weekly SLA Customer Report

Customer NIX_Production
Database ID 51



Harddisk Usage NIX_PRD_ABSWEB01

	Free disk space on c: (%)	Total disk space on c: (Gb)
5-7-2017	92	300
4-7-2017	92	300
3-7-2017	92	300
2-7-2017	92	300
1-7-2017	92	300
30-6-2017	92	300
29-6-2017	92	300

Harddisk Usage NIX_PRD_ORACLE_B11

	Free disk space on c: (%)	Total disk space on c: (Gb)	Free disk space on e: (%)	Total disk space on e: (Gb)	Free disk space on f: (%)	Total disk space on f: (Gb)	Free disk space on g: (%)	Total disk space on g: (Gb)
5-7-2017	45	279	63	558	37	279	60	558
4-7-2017	47	279	63	558	37	279	61	558
3-7-2017	58	279	63	558	37	279	61	558
2-7-2017	61	279	63	558	37	279	61	558
1-7-2017	57	279	63	558	37	279	61	558
30-6-2017	55	279	63	558	37	279	62	558
29-6-2017	53	279	63	558	38	279	63	558

Weekly SLA Customer Report

Customer NIX_Production
Database ID 51



Harddisk Usage NIX_PRD_ORCDB1

	Free disk space on c: (%)	Total disk space on c: (Gb)	Free disk space on e: (%)	Total disk space on e: (Gb)	Free disk space on f: (%)	Total disk space on f: (Gb)	Free disk space on g: (%)	Total disk space on g: (Gb)
5-7-2017	41	279	75	558	81	558	61	279
4-7-2017	41	279	75	558	81	558	60	279
3-7-2017	41	279	75	558	81	558	60	279
2-7-2017	41	279	75	558	81	558	60	279
1-7-2017	47	279	75	558	81	558	60	279
30-6-2017	56	279	75	558	81	558	60	279
29-6-2017	56	279	75	558	81	558	60	279

Harddisk Usage NIX_PRD_ORCDB2

	Free disk space on c: (%)	Total disk space on c: (Gb)	Free disk space on e: (%)	Total disk space on e: (Gb)	Free disk space on f: (%)	Total disk space on f: (Gb)	Free disk space on g: (%)	Total disk space on g: (Gb)
5-7-2017	41	279	75	558	81	558	61	279
4-7-2017	41	279	75	558	81	558	60	279
3-7-2017	41	279	75	558	81	558	60	279
2-7-2017	41	279	75	558	81	558	60	279
1-7-2017	47	279	75	558	81	558	60	279
30-6-2017	56	279	75	558	81	558	60	279
29-6-2017	56	279	75	558	81	558	60	279

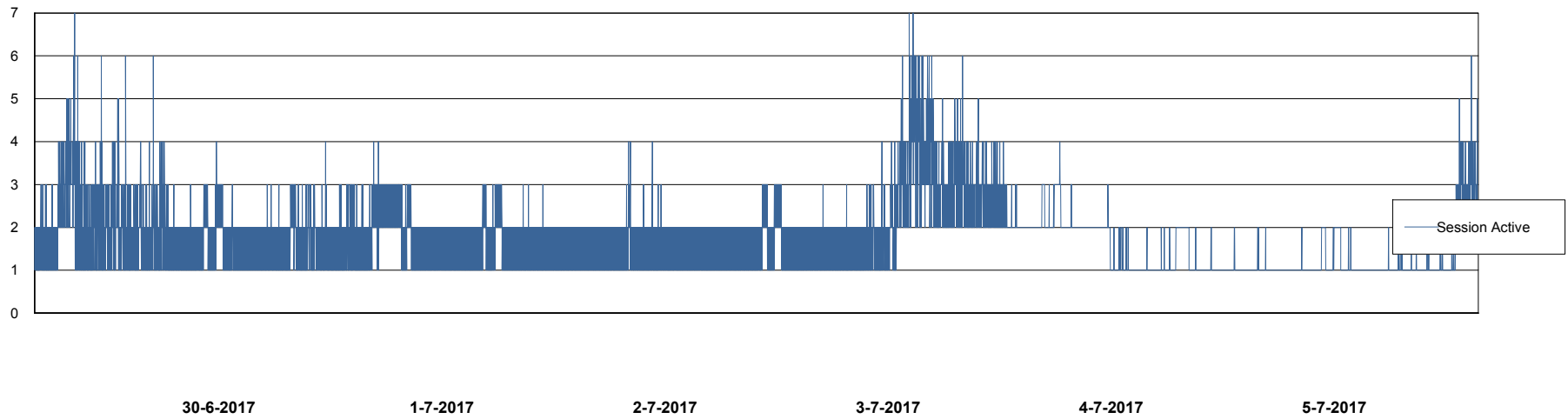
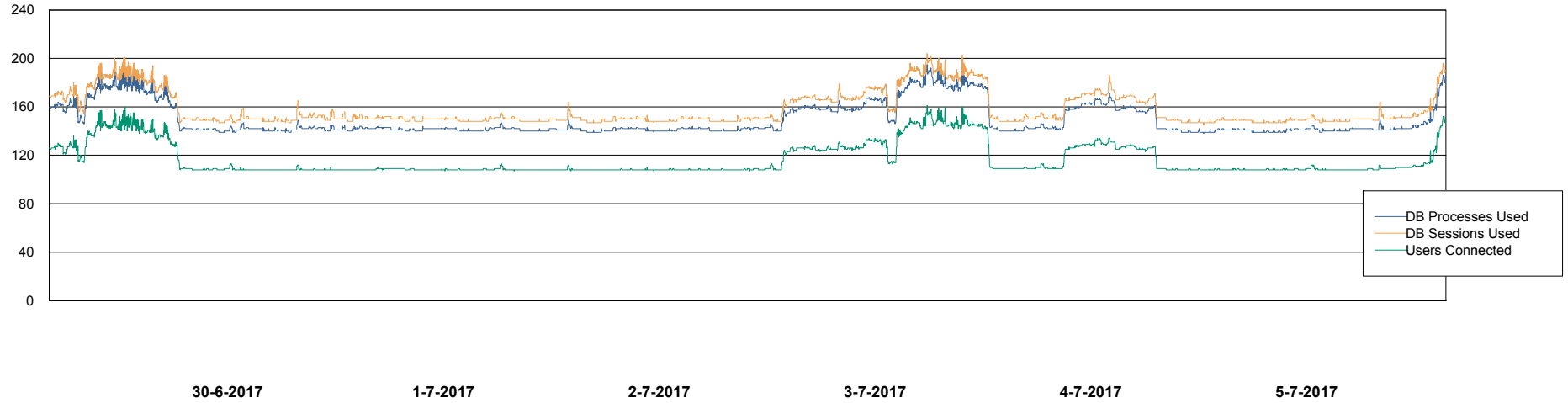
Weekly SLA Customer Report

Customer NIX_Production
Database ID 51



Database Performance NIXDB_Production

DB Processes Max 500
DB Sessions Max 800



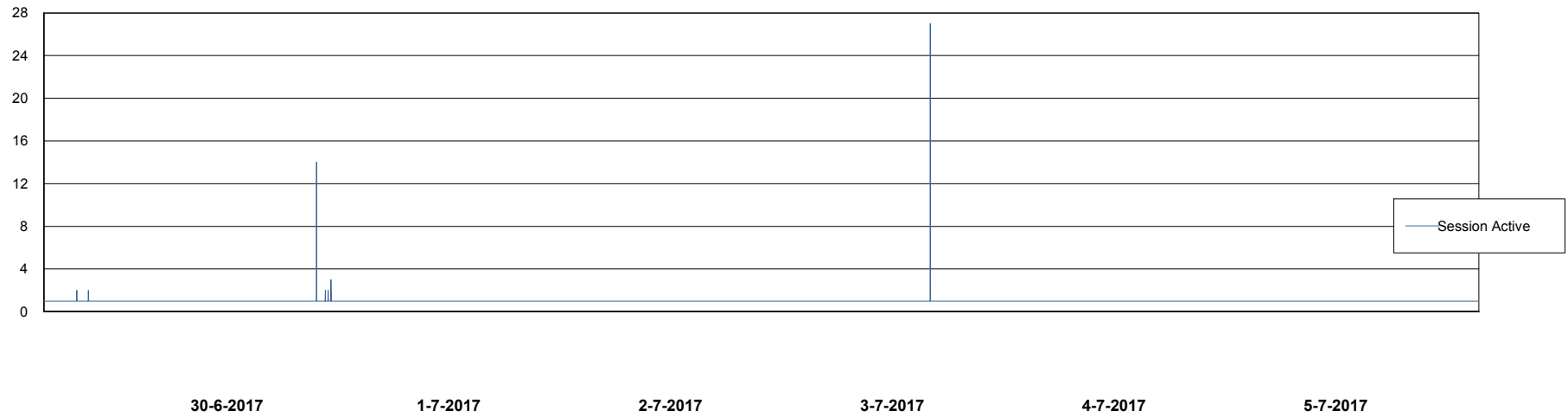
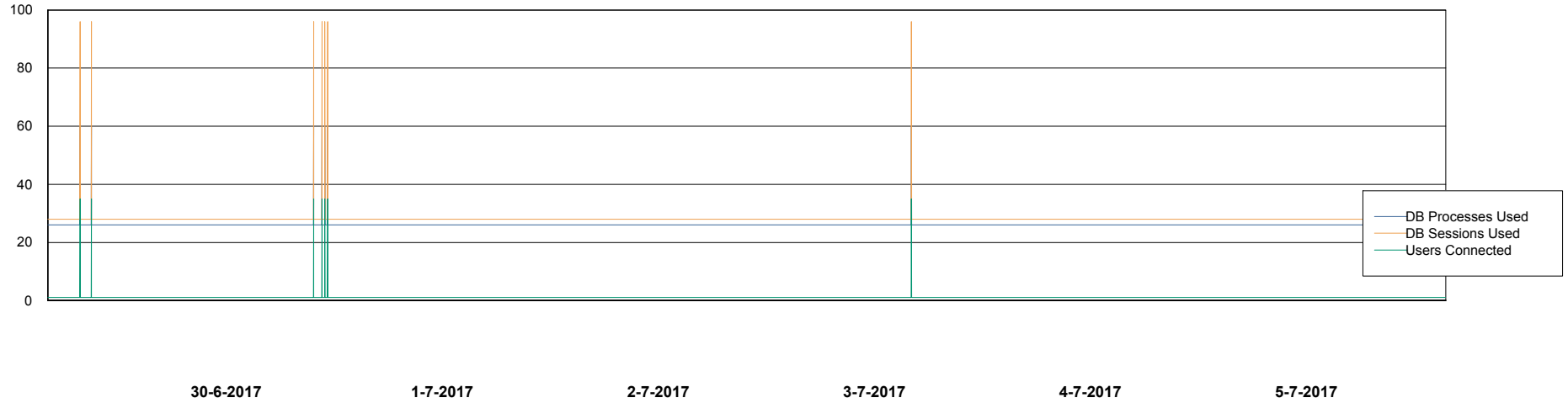
Weekly SLA Customer Report

Customer NIX_Production
Database ID 51



Database Performance NIXDB_Standby

DB Processes Max 500
DB Sessions Max 800



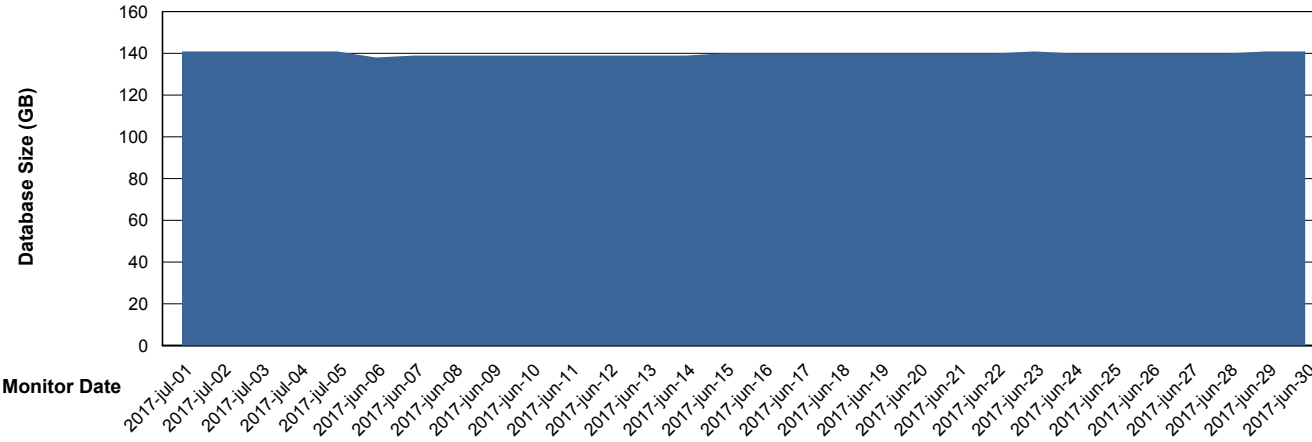
Weekly SLA Customer Report

Customer NIX_Production
 Database ID 51



DATABASE SIZE NIXDB_Production

Database growth over last month



Database Tablespace NIXDB_Production

Date	Tablespace Name	Filesize (Gb)	Usedsize (Gb)	Percentage free
5-7-2017	ABSDATA	59	50	15
	INDX	105	89	15
4-7-2017	ABSDATA	59	50	15
	INDX	105	89	15
3-7-2017	ABSDATA	59	50	15
	INDX	105	89	15
2-7-2017	ABSDATA	59	50	15
	INDX	105	89	15
1-7-2017	ABSDATA	59	50	15
	INDX	105	89	15
30-6-2017	ABSDATA	59	50	15
	INDX	105	89	15
29-6-2017	ABSDATA	59	50	15
	INDX	105	89	15

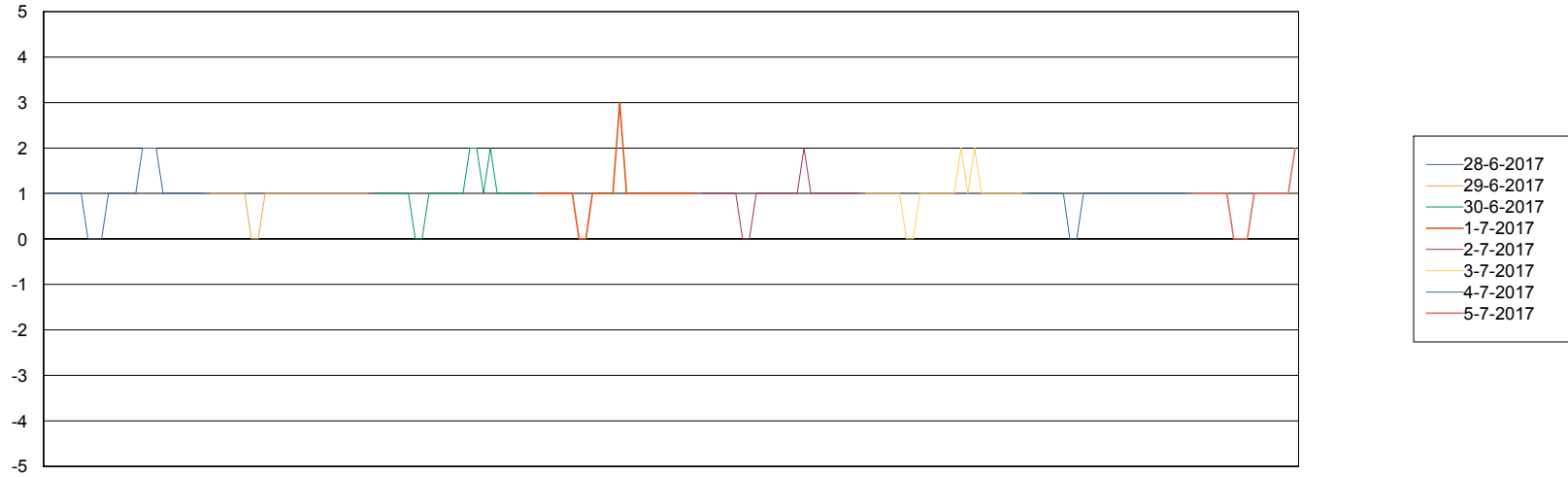
Weekly SLA Customer Report

Customer NIX_Production
Database ID 51



Standby Database Health NIX_Production

Recovery lag for last 7 days



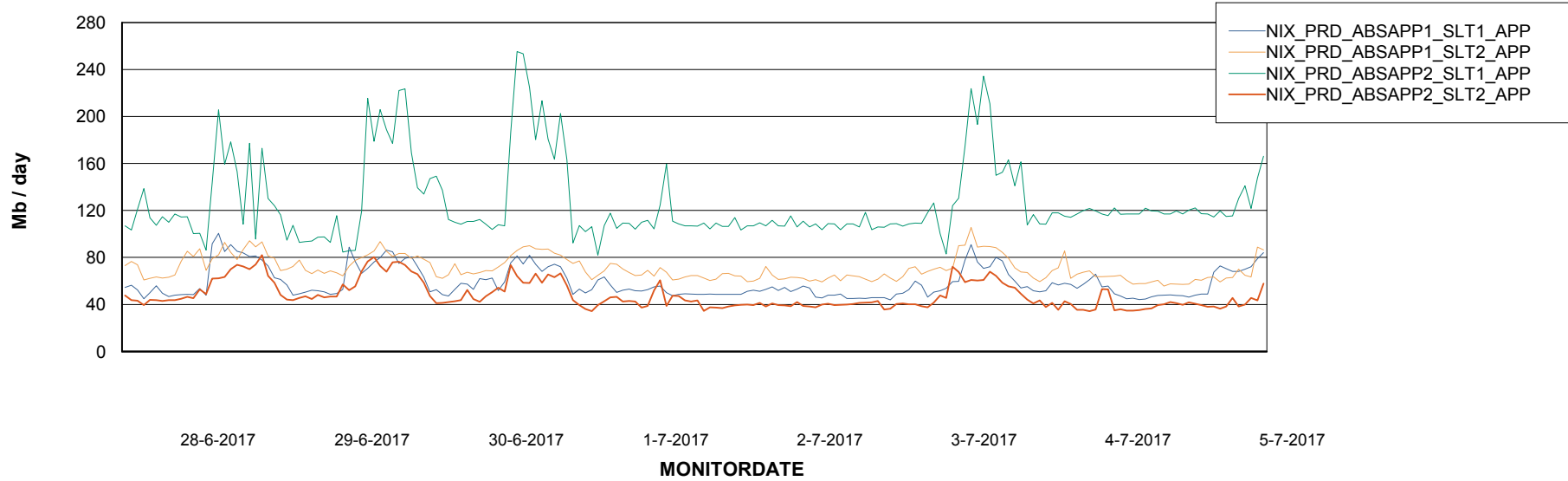
Weekly SLA Customer Report

Customer NIX_Production
Database ID 51

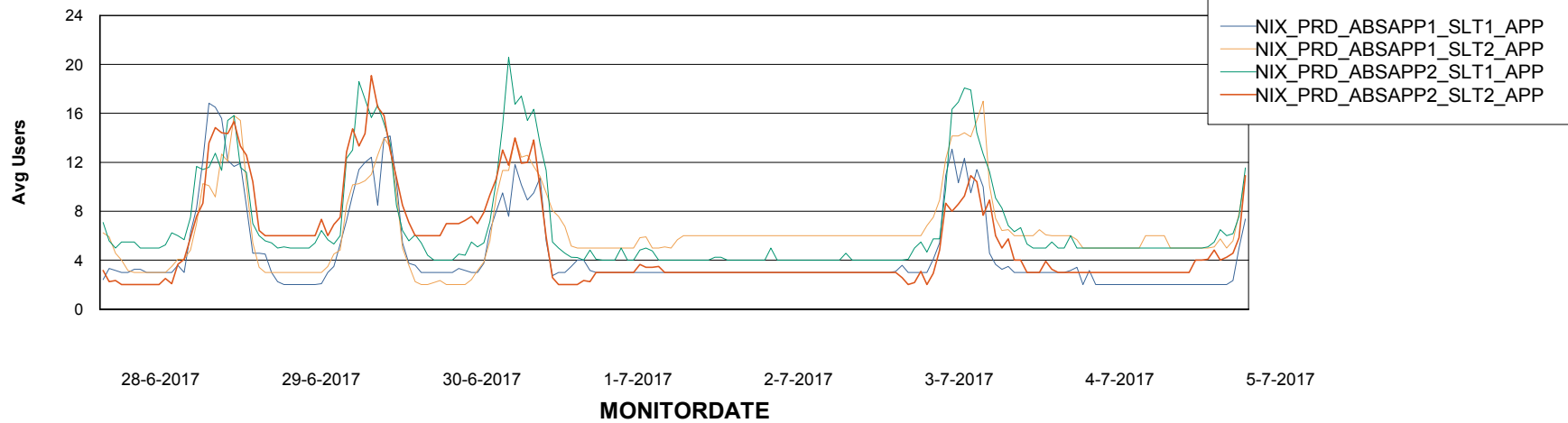


ABSSolute Application Server Services

Avg memory used per ABS Server Service



Avg users per day per ABS server



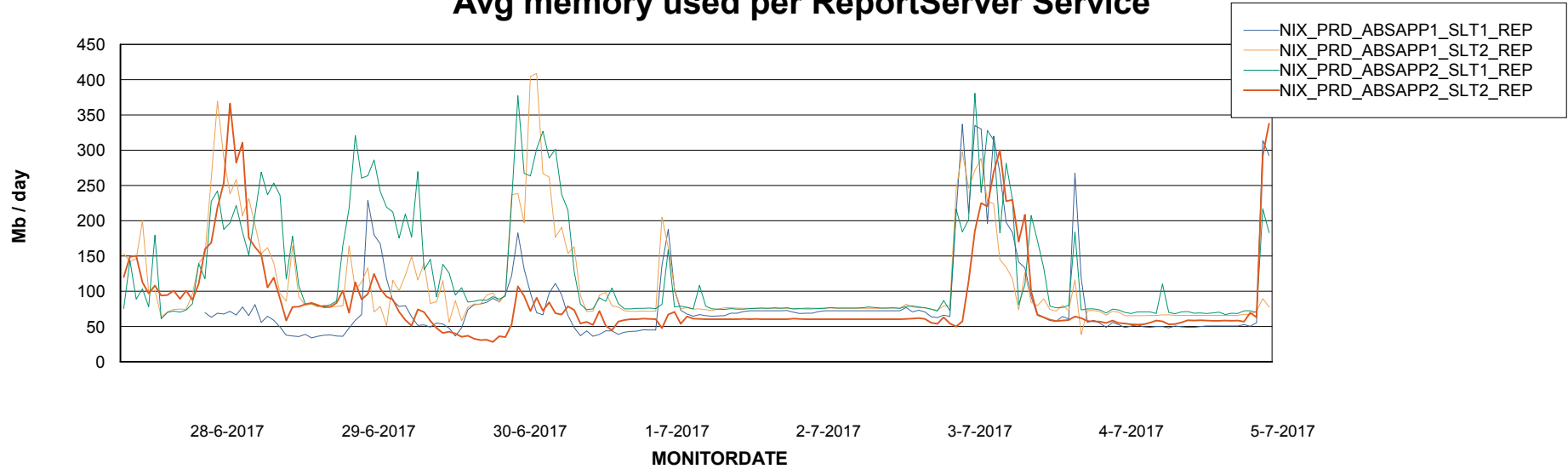
Weekly SLA Customer Report

Customer NIX_Production
Database ID 51



ABSSolute Application ReportServer Services

Avg memory used per ReportServer Service



Disaster per ABS component

