

Weekly SLA Customer Report

Customer NIX_Production
Database ID 51



Harddisk Usage NIX_PRD_ABSAPP02

	Free disk space on c: (%)	Total disk space on c: (Gb)
24-6-2017	85	200
23-6-2017	85	200
22-6-2017	85	200
21-6-2017	85	200
20-6-2017	85	200
19-6-2017	85	200
18-6-2017	85	200

Harddisk Usage NIX_PRD_ABSAPP03

	Free disk space on c: (%)	Total disk space on c: (Gb)
24-6-2017	80	200
23-6-2017	80	200
22-6-2017	80	200
21-6-2017	80	200
20-6-2017	80	200
19-6-2017	80	200
18-6-2017	80	200

Weekly SLA Customer Report

Customer NIX_Production
Database ID 51



Harddisk Usage NIX_PRD_ABSWEB01

	Free disk space on c: (%)	Total disk space on c: (Gb)
24-6-2017	92	300
23-6-2017	92	300
22-6-2017	92	300
21-6-2017	92	300
20-6-2017	92	300
19-6-2017	92	300
18-6-2017	92	300

Harddisk Usage NIX_PRD_ORACLE_B11

	Free disk space on c: (%)	Total disk space on c: (Gb)	Free disk space on e: (%)	Total disk space on e: (Gb)	Free disk space on f: (%)	Total disk space on f: (Gb)	Free disk space on g: (%)	Total disk space on g: (Gb)
24-6-2017	52	279	63	558	37	279	66	558
23-6-2017	54	279	63	558	37	279	62	558
22-6-2017	55	279	63	558	38	279	63	558
21-6-2017	53	279	63	558	37	279	64	558
20-6-2017	52	279	63	558	37	279	65	558
19-6-2017	52	279	63	558	37	279	66	558
18-6-2017	52	279	63	558	37	279	66	558

Weekly SLA Customer Report

Customer NIX_Production
Database ID 51



Harddisk Usage NIX_PRD_ORCDB1

	Free disk space on c: (%)	Total disk space on c: (Gb)	Free disk space on e: (%)	Total disk space on e: (Gb)	Free disk space on f: (%)	Total disk space on f: (Gb)	Free disk space on g: (%)	Total disk space on g: (Gb)
24-6-2017	56	279	75	558	81	558	61	279
23-6-2017	56	279	75	558	81	558	61	279
22-6-2017	56	279	75	558	81	558	61	279
21-6-2017	56	279	75	558	81	558	61	279
20-6-2017	56	279	75	558	81	558	61	279
19-6-2017	56	279	75	558	81	558	62	279
18-6-2017	56	279	75	558	81	558	61	279

Harddisk Usage NIX_PRD_ORCDB2

	Free disk space on c: (%)	Total disk space on c: (Gb)	Free disk space on e: (%)	Total disk space on e: (Gb)	Free disk space on f: (%)	Total disk space on f: (Gb)	Free disk space on g: (%)	Total disk space on g: (Gb)
24-6-2017	56	279	75	558	81	558	61	279
23-6-2017	56	279	75	558	81	558	61	279
22-6-2017	56	279	75	558	81	558	61	279
21-6-2017	56	279	75	558	81	558	61	279
20-6-2017	56	279	75	558	81	558	61	279
19-6-2017	56	279	75	558	81	558	62	279
18-6-2017	56	279	75	558	81	558	61	279

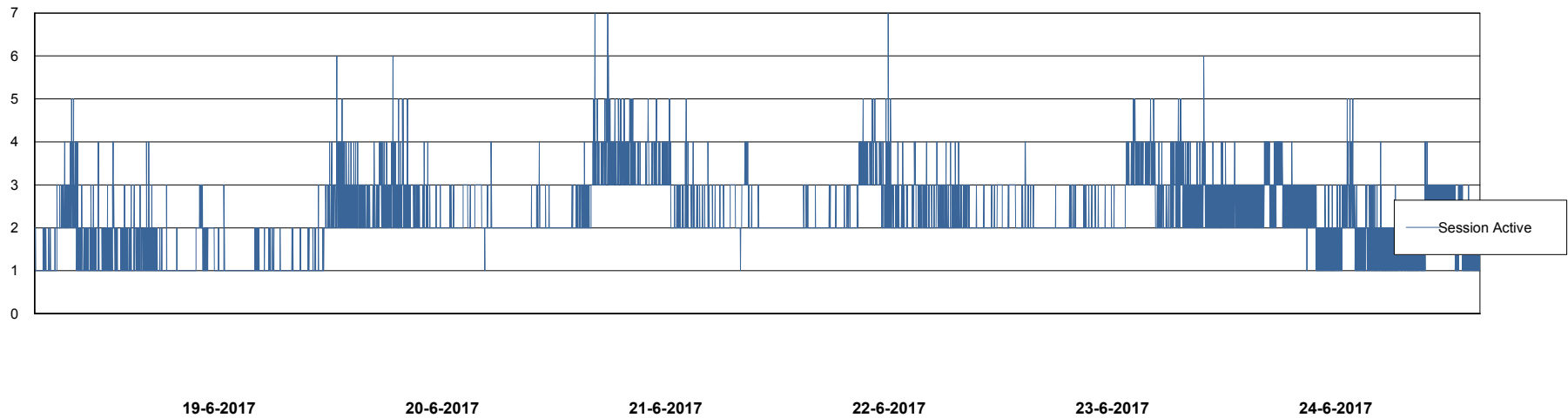
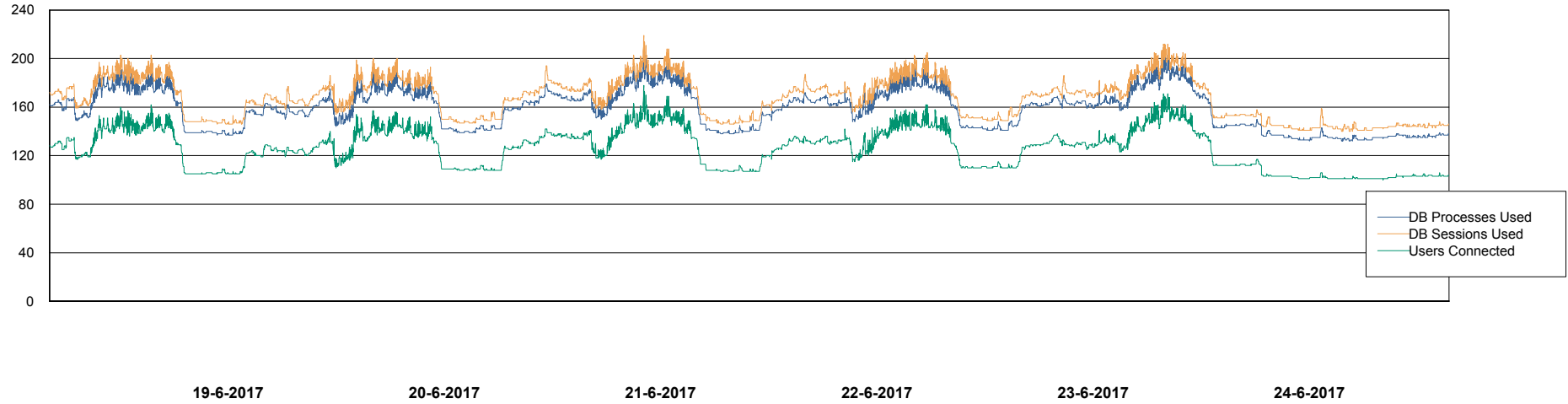
Weekly SLA Customer Report

Customer NIX_Production
Database ID 51



Database Performance NIXDB_Production

DB Processes Max 500
DB Sessions Max 800



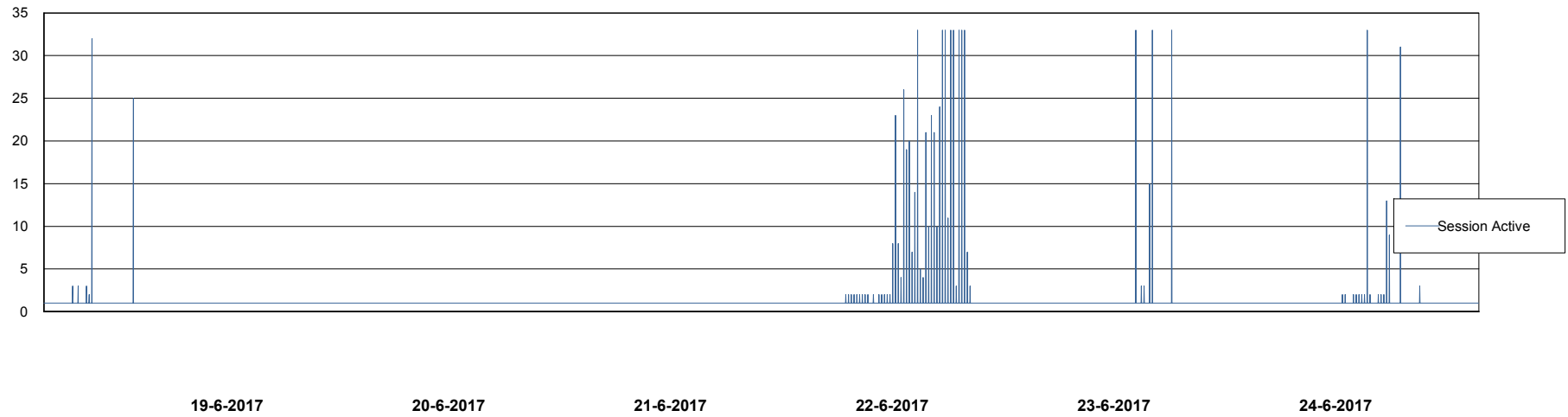
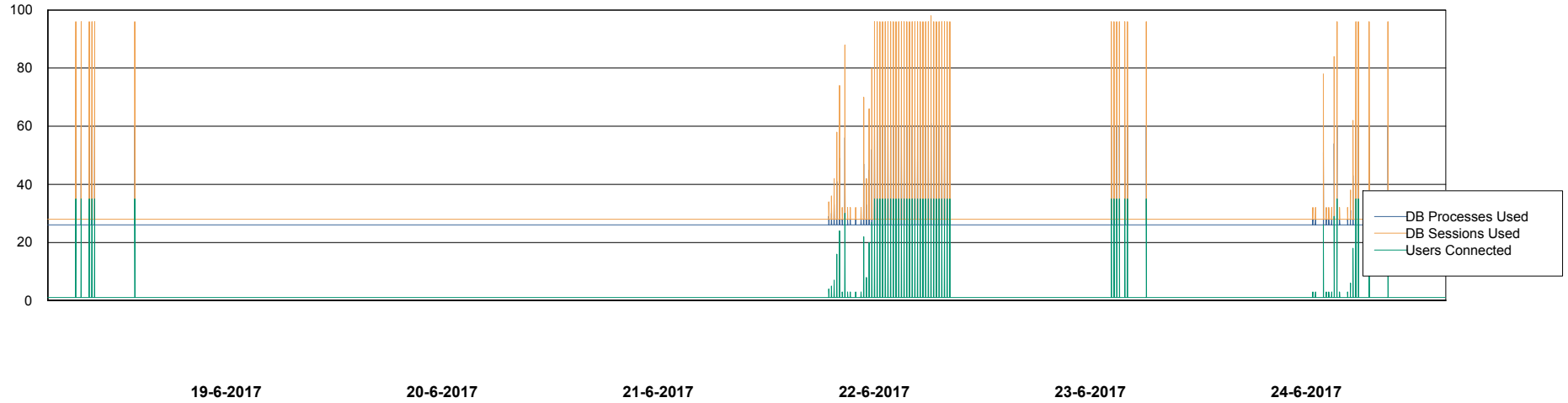
Weekly SLA Customer Report

Customer NIX_Production
Database ID 51



Database Performance NIXDB_Standby

DB Processes Max 500
DB Sessions Max 800



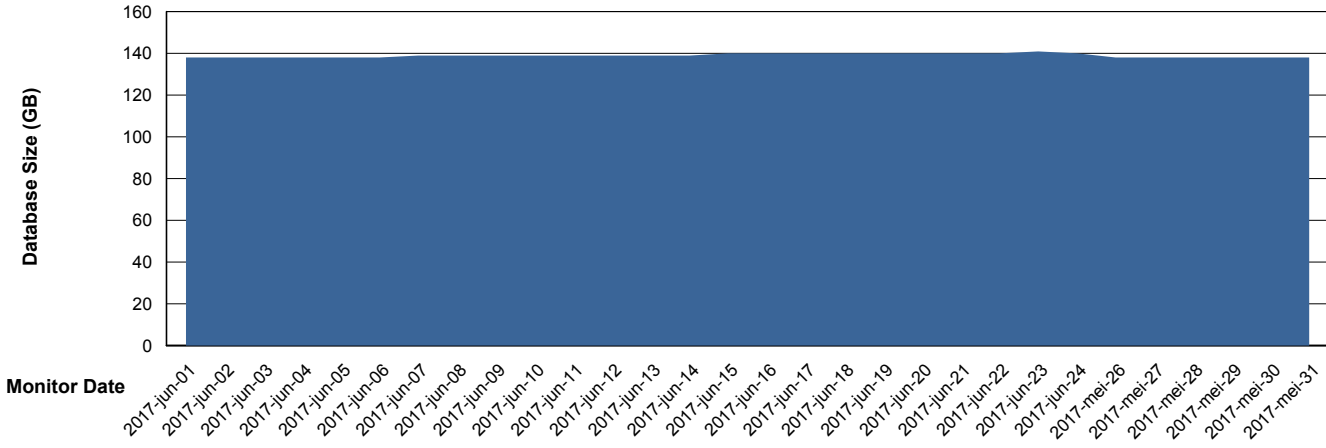
Weekly SLA Customer Report

Customer NIX_Production
 Database ID 51



DATABASE SIZE NIXDB_Production

Database growth over last month



Database Tablespace NIXDB_Production

Date	Tablespace Name	Filesize (Gb)	Usedsize (Gb)	Percentage free
24-6-2017	ABSDATA	59	50	15
	INDX	105	89	15
23-6-2017	ABSDATA	59	50	15
	INDX	105	89	15
22-6-2017	ABSDATA	59	50	15
	INDX	105	89	15
21-6-2017	ABSDATA	59	50	15
	INDX	105	89	15
20-6-2017	ABSDATA	59	50	15
	INDX	105	89	15
19-6-2017	ABSDATA	59	50	15
	INDX	105	88	16
18-6-2017	ABSDATA	59	50	15
	INDX	105	88	16

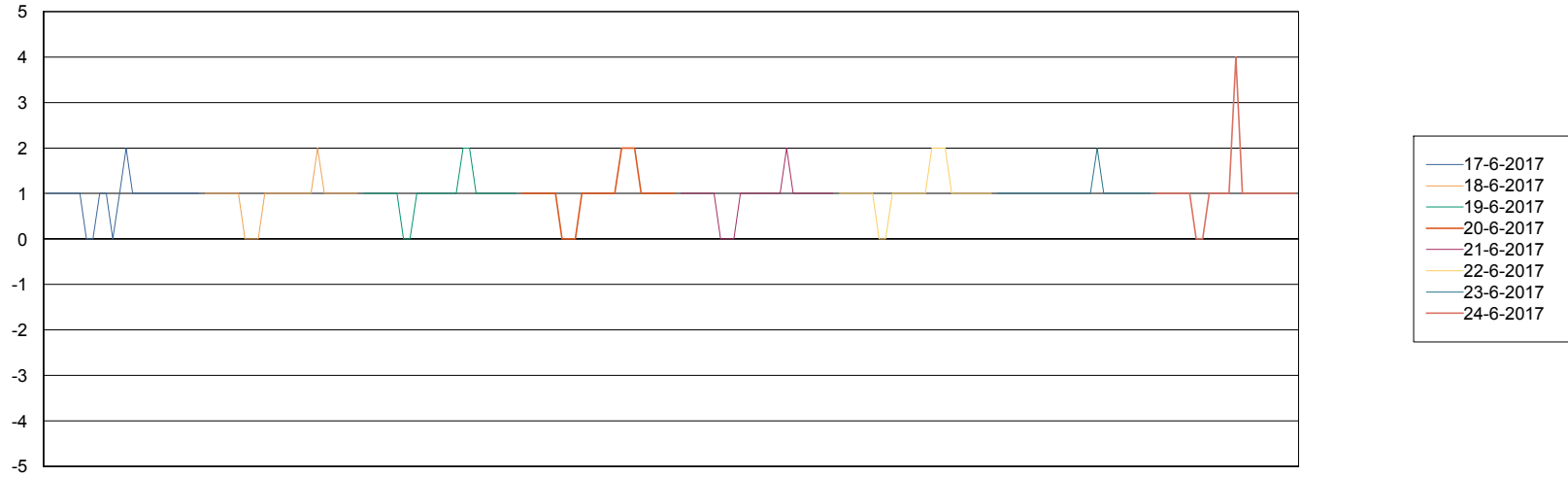
Weekly SLA Customer Report

Customer NIX_Production
Database ID 51



Standby Database Health NIX_Production

Recovery lag for last 7 days



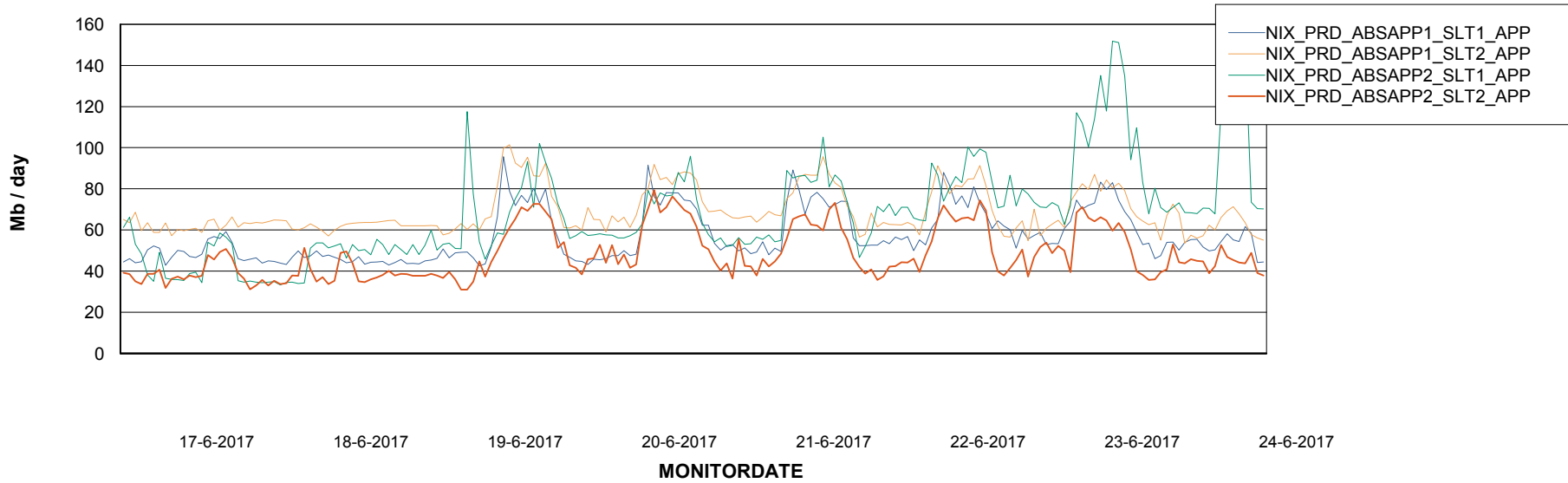
Weekly SLA Customer Report

Customer NIX_Production
Database ID 51

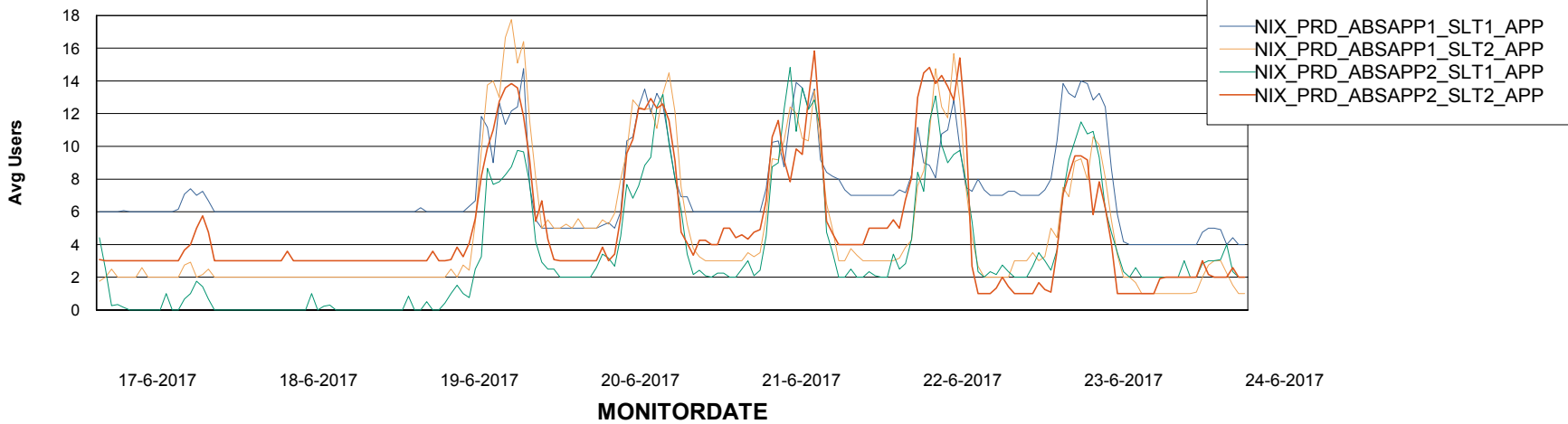


ABSSolute Application Server Services

Avg memory used per ABS Server Service



Avg users per day per ABS server



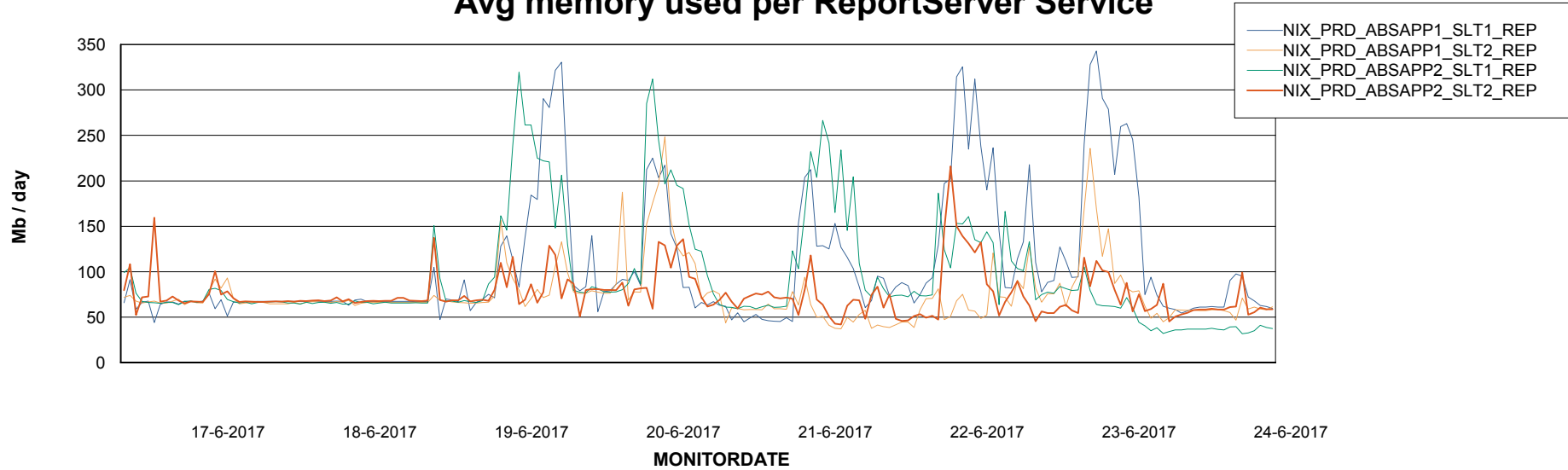
Weekly SLA Customer Report

Customer NIX_Production
Database ID 51



ABSSolute Application ReportServer Services

Avg memory used per ReportServer Service



Disaster per ABS component

