

# Weekly SLA Customer Report

Customer NIX\_Production  
Database ID 51



Harddisk Usage NIX\_PRD\_ABSAPP02

	Free disk space on c: (%)	Total disk space on c: (Gb)
6-5-2017	85	200
5-5-2017	85	200
4-5-2017	85	200
3-5-2017	85	200
2-5-2017	85	200
1-5-2017	85	200
30-4-2017	85	200

Harddisk Usage NIX\_PRD\_ABSAPP03

	Free disk space on c: (%)	Total disk space on c: (Gb)
6-5-2017	80	200
5-5-2017	80	200
4-5-2017	80	200
3-5-2017	80	200
2-5-2017	80	200
1-5-2017	80	200
30-4-2017	80	200

# Weekly SLA Customer Report

Customer NIX\_Production  
Database ID 51



## Harddisk Usage NIX\_PRD\_ABSWEB01

	Free disk space on c: (%)	Total disk space on c: (Gb)
6-5-2017	92	300
5-5-2017	92	300
4-5-2017	92	300
3-5-2017	92	300
2-5-2017	92	300
1-5-2017	92	300
30-4-2017	92	300

## Harddisk Usage NIX\_PRD\_ORACLE\_B11

	Free disk space on c: (%)	Total disk space on c: (Gb)	Free disk space on e: (%)	Total disk space on e: (Gb)	Free disk space on f: (%)	Total disk space on f: (Gb)	Free disk space on g: (%)	Total disk space on g: (Gb)
6-5-2017	66	279	51	558	39	279	28	558
5-5-2017	66	279	51	558	37	279	27	558
4-5-2017	66	279	51	558	38	279	31	558
3-5-2017	66	279	51	558	37	279	34	558
2-5-2017	66	279	51	558	37	279	36	558
1-5-2017	66	279	51	558	38	279	38	558
30-4-2017	66	279	51	558	39	279	39	558

# Weekly SLA Customer Report

Customer NIX\_Production  
Database ID 51



## Harddisk Usage NIX\_PRD\_ORCDB1

	Free disk space on c: (%)	Total disk space on c: (Gb)	Free disk space on e: (%)	Total disk space on e: (Gb)	Free disk space on f: (%)	Total disk space on f: (Gb)	Free disk space on g: (%)	Total disk space on g: (Gb)
6-5-2017	40	279	76	558	82	558	62	279
5-5-2017	40	279	76	558	82	558	62	279
4-5-2017	40	279	76	558	82	558	62	279
3-5-2017	40	279	76	558	82	558	62	279
2-5-2017	40	279	76	558	82	558	62	279
1-5-2017	46	279	76	558	82	558	62	279
30-4-2017	54	279	76	558	82	558	62	279

## Harddisk Usage NIX\_PRD\_ORCDB2

	Free disk space on c: (%)	Total disk space on c: (Gb)	Free disk space on e: (%)	Total disk space on e: (Gb)	Free disk space on f: (%)	Total disk space on f: (Gb)	Free disk space on g: (%)	Total disk space on g: (Gb)
6-5-2017	40	279	76	558	82	558	62	279
5-5-2017	40	279	76	558	82	558	62	279
4-5-2017	40	279	76	558	82	558	62	279
3-5-2017	40	279	76	558	82	558	62	279
2-5-2017	40	279	76	558	82	558	62	279
1-5-2017	46	279	76	558	82	558	62	279
30-4-2017	54	279	76	558	82	558	62	279

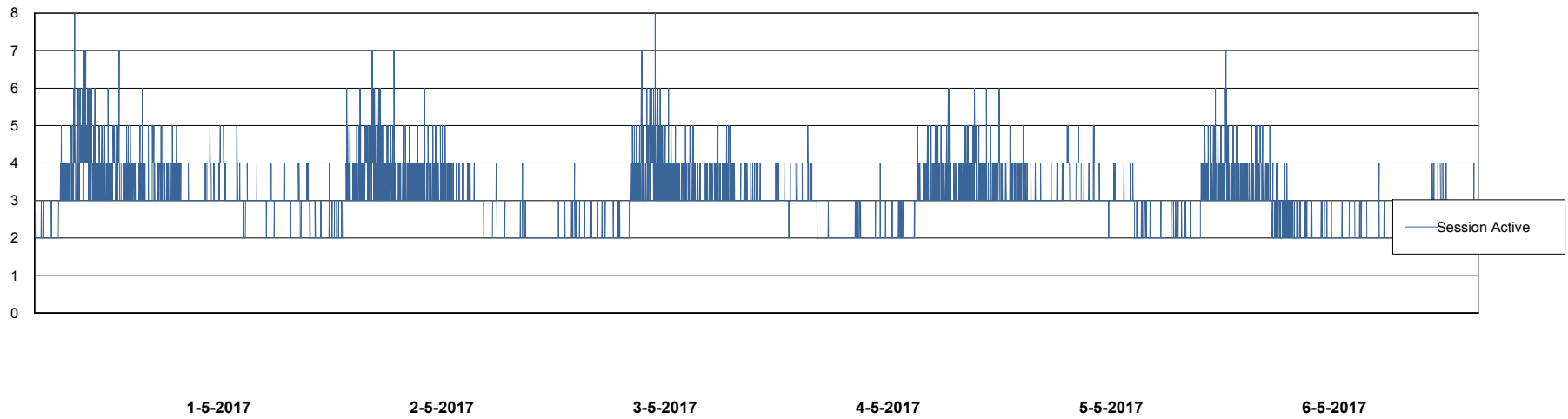
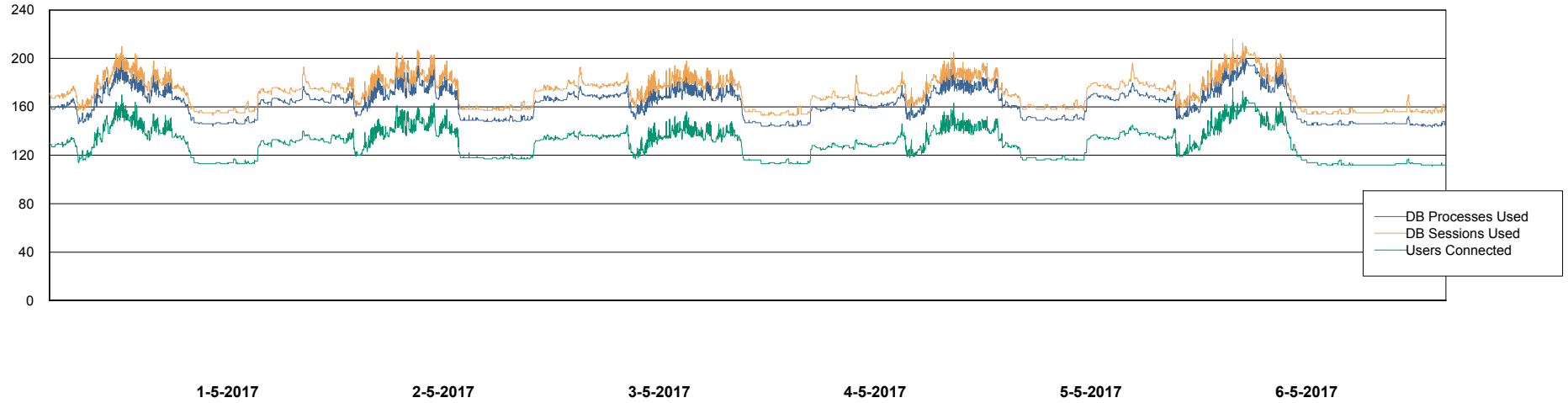
# Weekly SLA Customer Report

Customer NIX\_Production  
Database ID 51



## Database Performance NIXDB\_Production

DB Processes Max 500  
DB Sessions Max 800



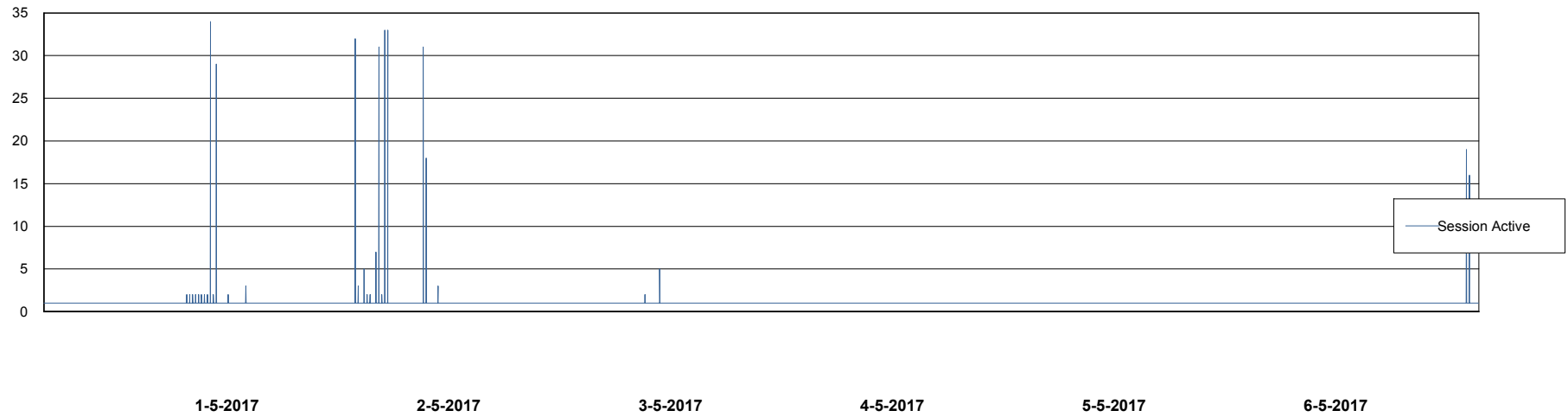
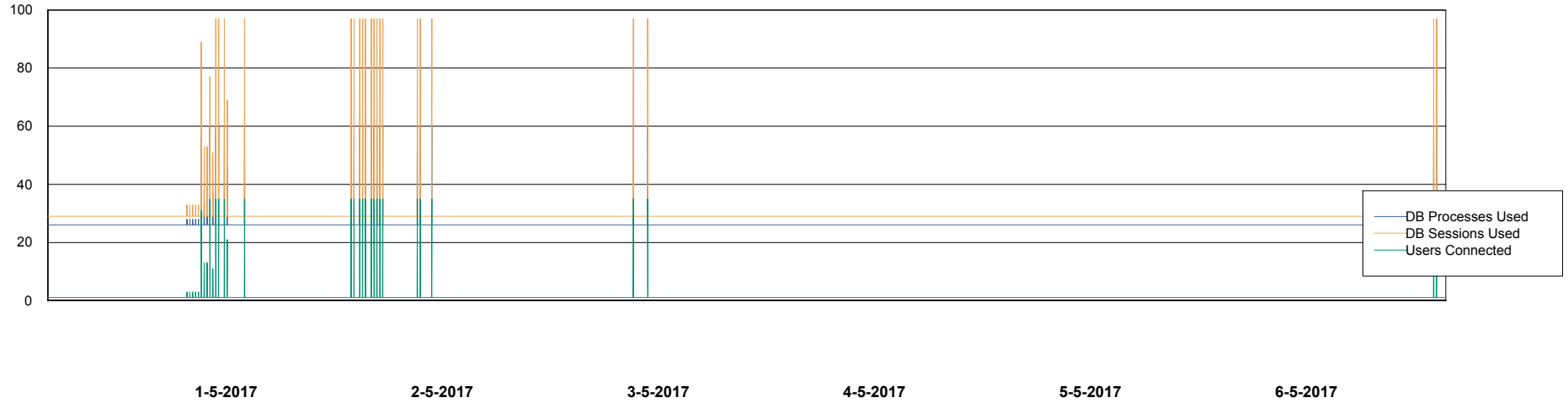
# Weekly SLA Customer Report

Customer NIX\_Production  
Database ID 51



## Database Performance NIXDB\_Standby

DB Processes Max 500  
DB Sessions Max 800



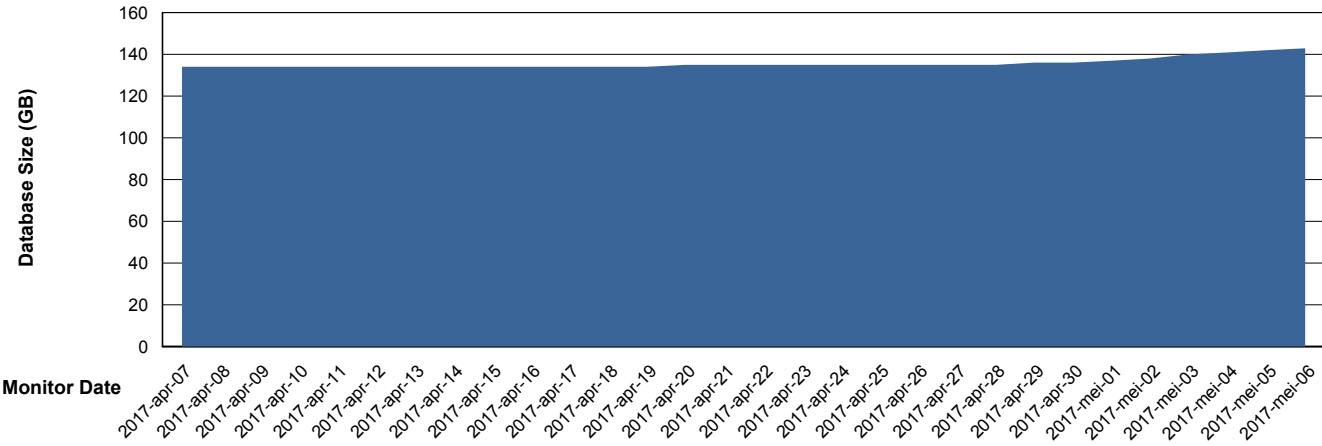
# Weekly SLA Customer Report

Customer NIX\_Production  
 Database ID 51



DATABASE SIZE NIXDB\_Production

## Database growth over last month



Database Tablespace NIXDB\_Production

Date	Tablespace Name	Filesize (Gb)	Usedsize (Gb)	Percentage free
6-5-2017	ABSDATA	59	49	17
	INDX	100	86	14
5-5-2017	ABSDATA	59	49	17
	INDX	100	86	14
4-5-2017	ABSDATA	59	49	17
	INDX	100	86	14
3-5-2017	ABSDATA	59	49	17
	INDX	100	86	14
2-5-2017	ABSDATA	59	49	17
	INDX	100	86	14
1-5-2017	ABSDATA	59	48	19
	INDX	100	86	14
30-4-2017	ABSDATA	59	48	19
	INDX	100	86	14

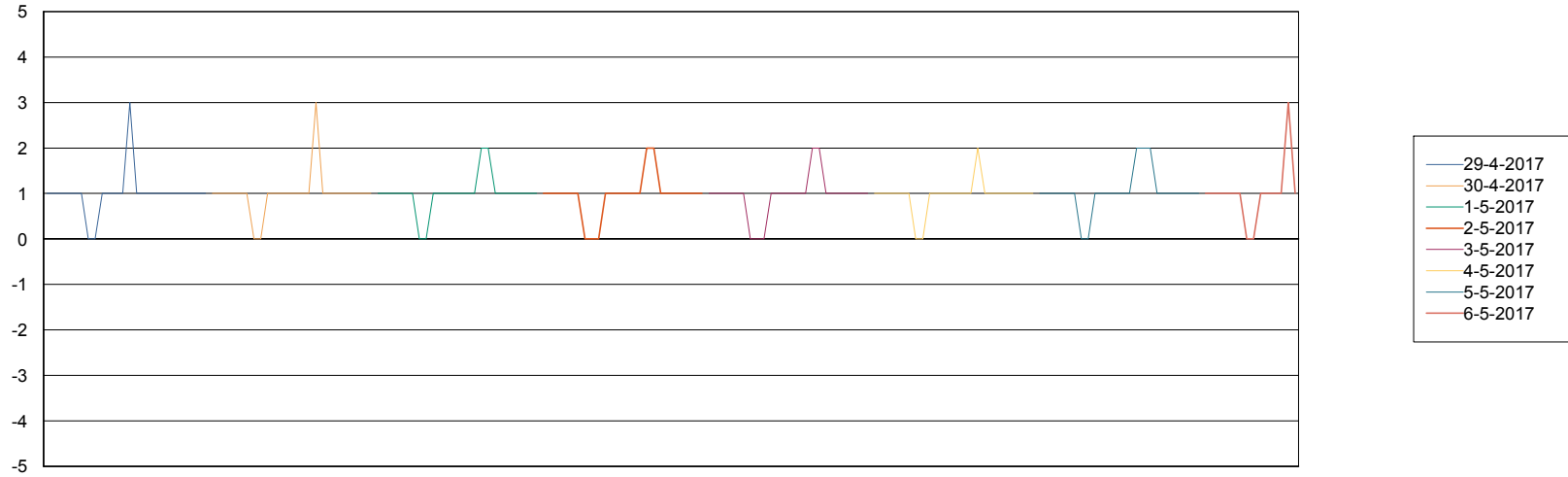
# Weekly SLA Customer Report

Customer NIX\_Production  
Database ID 51



Standby Database Health NIX\_Production

## Recovery lag for last 7 days



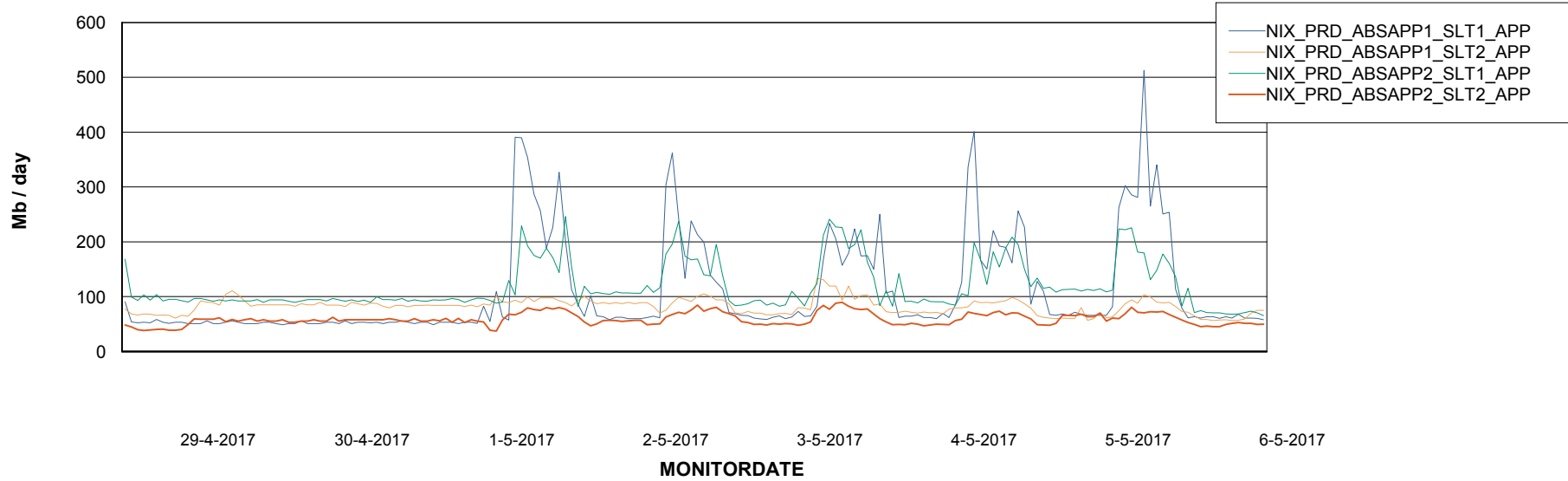
# Weekly SLA Customer Report

Customer NIX\_Production  
Database ID 51

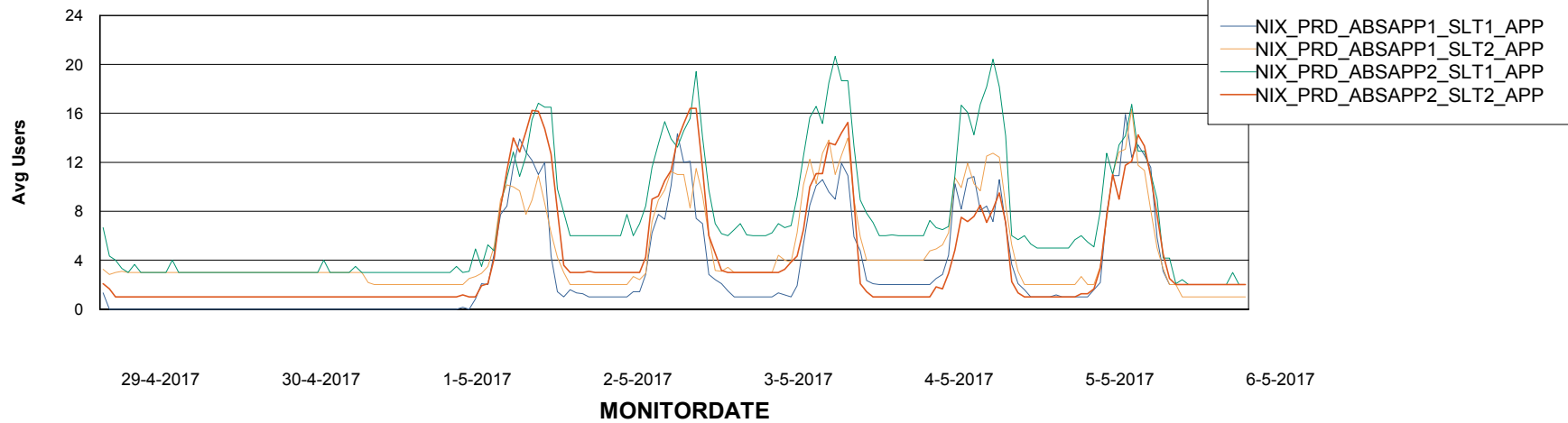


## ABSolute Application Server Services

### Avg memory used per ABS Server Service



### Avg users per day per ABS server



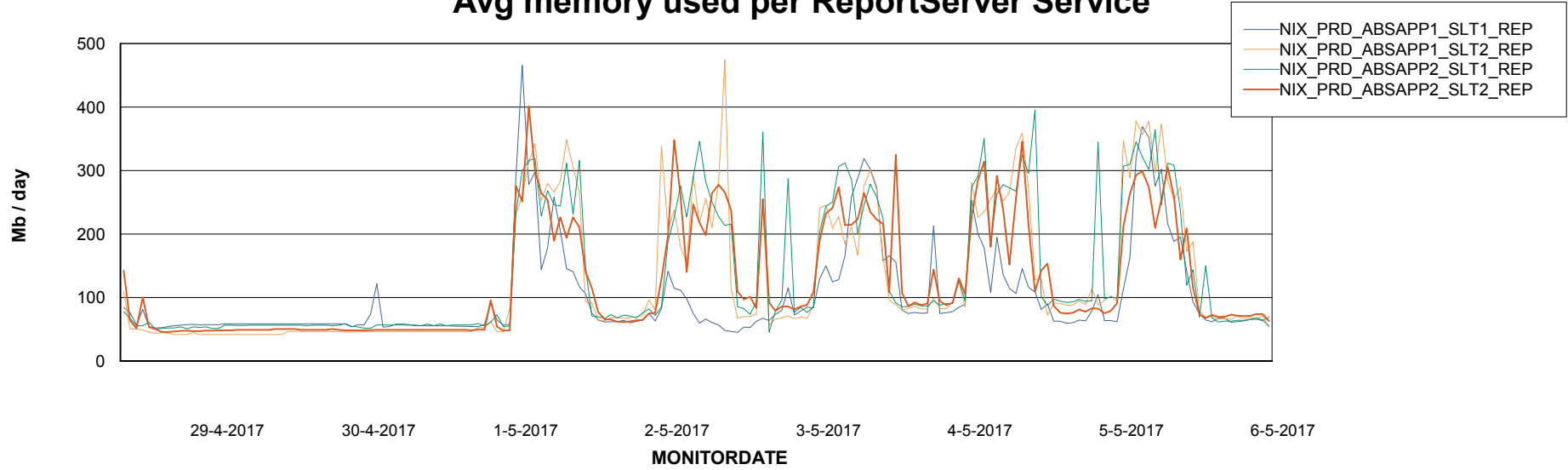
# Weekly SLA Customer Report

Customer NIX\_Production  
Database ID 51



## ABSSolute Application ReportServer Services

### Avg memory used per ReportServer Service



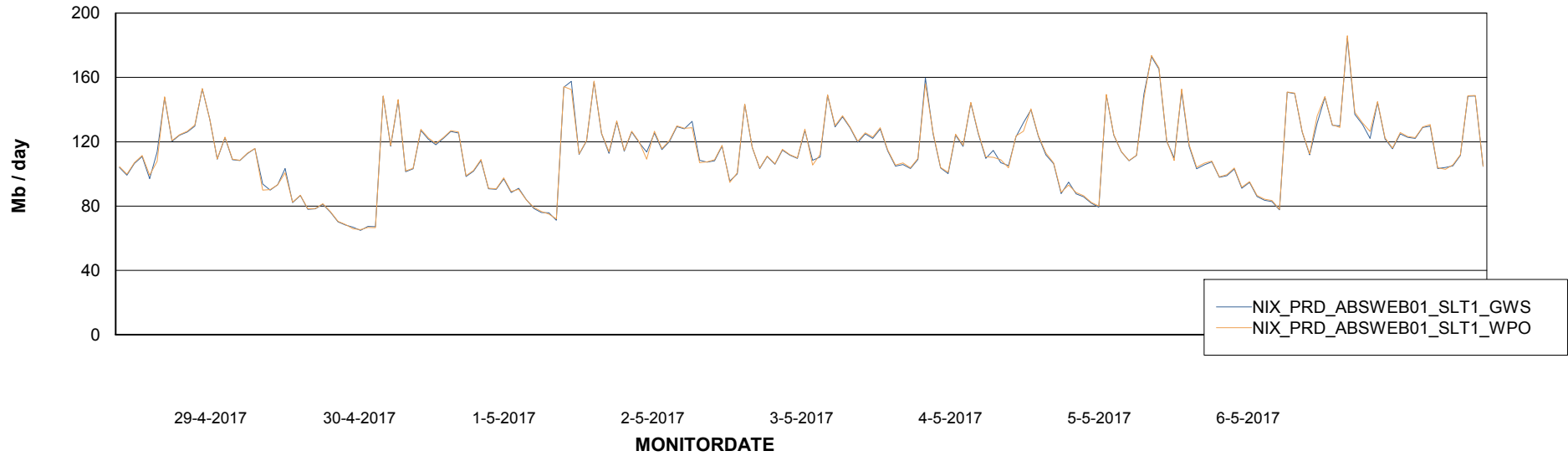
# Weekly SLA Customer Report

Customer NIX\_Production  
Database ID 51



## ABSSolute Web Component Services

### Avg memory used per ABS Web component



# Weekly SLA Customer Report

Customer NIX\_Production  
Database ID 51



## Disaster per ABS component

