

# Weekly SLA Customer Report

Customer NIX\_Production  
Database ID 51



Harddisk Usage NIX\_PRD\_ABSAPP02

	Free disk space on c: (%)	Total disk space on c: (Gb)
22-4-2017	85	200
21-4-2017	85	200
20-4-2017	85	200
19-4-2017	85	200
18-4-2017	85	200
17-4-2017	85	200
16-4-2017	85	200

Harddisk Usage NIX\_PRD\_ABSAPP03

	Free disk space on c: (%)	Total disk space on c: (Gb)
22-4-2017	81	200
21-4-2017	81	200
20-4-2017	81	200
19-4-2017	81	200
18-4-2017	81	200
17-4-2017	81	200
16-4-2017	81	200

# Weekly SLA Customer Report

Customer NIX\_Production  
Database ID 51



## Harddisk Usage NIX\_PRD\_ABSWEB01

	Free disk space on c: (%)	Total disk space on c: (Gb)
22-4-2017	92	300
21-4-2017	92	300
20-4-2017	92	300
19-4-2017	92	300
18-4-2017	92	300
17-4-2017	92	300
16-4-2017	92	300

## Harddisk Usage NIX\_PRD\_ORACLE\_B11

	Free disk space on c: (%)	Total disk space on c: (Gb)	Free disk space on e: (%)	Total disk space on e: (Gb)	Free disk space on f: (%)	Total disk space on f: (Gb)	Free disk space on g: (%)	Total disk space on g: (Gb)
22-4-2017	66	279	51	558	38	279	45	558
21-4-2017	66	279	50	558	39	279	44	558
20-4-2017	66	279	50	558	41	279	48	558
19-4-2017	66	279	50	558	43	279	51	558
18-4-2017	53	279	47	558	44	279	56	558
17-4-2017	46	279	45	558	45	279	58	558
16-4-2017	46	279	45	558	45	279	59	558

# Weekly SLA Customer Report

Customer NIX\_Production  
 Database ID 51



Harddisk Usage NIX\_PRD\_ORCDB1

	Free disk space on c: (%)	Total disk space on c: (Gb)	Free disk space on e: (%)	Total disk space on e: (Gb)	Free disk space on f: (%)	Total disk space on f: (Gb)	Free disk space on g: (%)	Total disk space on g: (Gb)
22-4-2017	54	279	76	558	82	558	54	279
21-4-2017	54	279	76	558	82	558	54	279
20-4-2017	54	279	76	558	82	558	54	279
19-4-2017	54	279	76	558	82	558	54	279
18-4-2017	54	279	76	558	82	558	54	279
17-4-2017	54	279	76	558	82	558	54	279
16-4-2017	54	279	76	558	82	558	54	279

Harddisk Usage NIX\_PRD\_ORCDB2

	Free disk space on c: (%)	Total disk space on c: (Gb)	Free disk space on e: (%)	Total disk space on e: (Gb)	Free disk space on f: (%)	Total disk space on f: (Gb)	Free disk space on g: (%)	Total disk space on g: (Gb)
22-4-2017	54	279	76	558	82	558	54	279
21-4-2017	54	279	76	558	82	558	54	279
20-4-2017	54	279	76	558	82	558	54	279
19-4-2017	54	279	76	558	82	558	54	279
18-4-2017	54	279	76	558	82	558	54	279
17-4-2017	54	279	76	558	82	558	54	279
16-4-2017	54	279	76	558	82	558	54	279

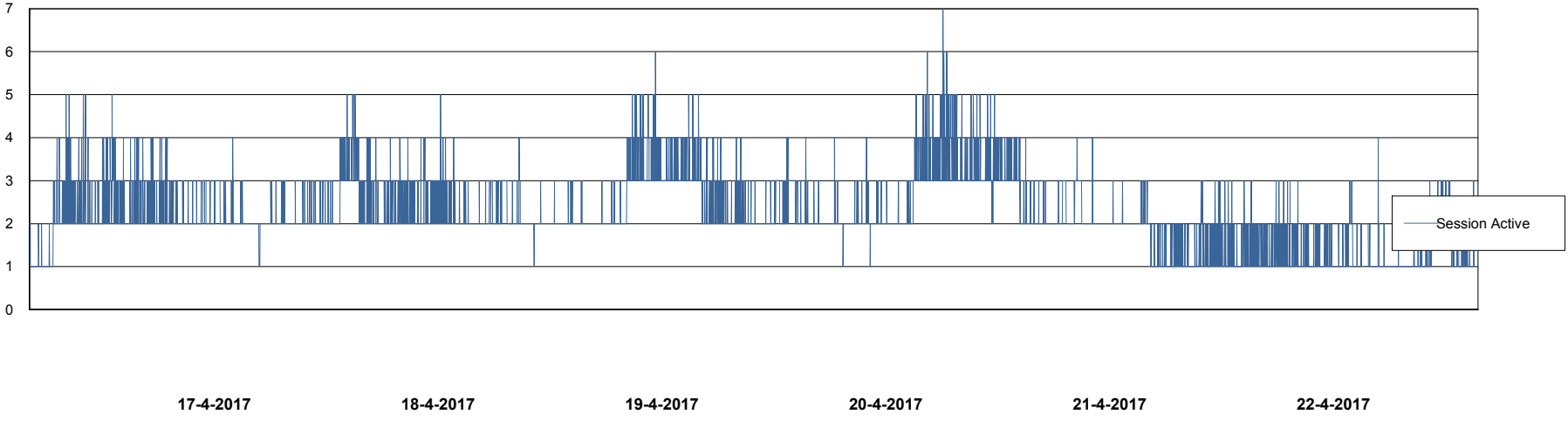
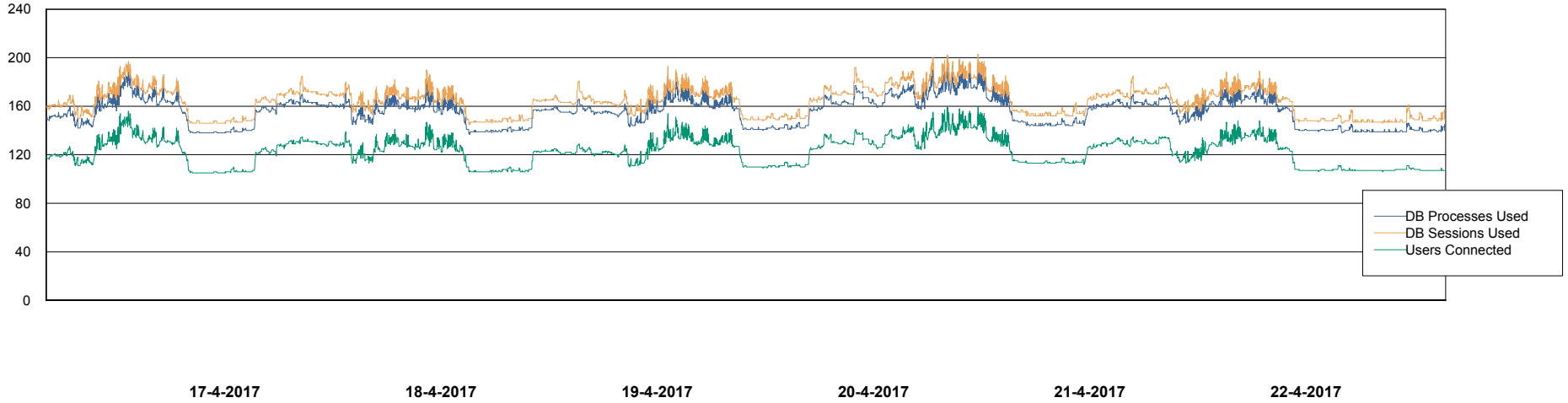
# Weekly SLA Customer Report

Customer NIX\_Production  
Database ID 51



## Database Performance NIXDB\_Production

DB Processes Max 500  
DB Sessions Max 800



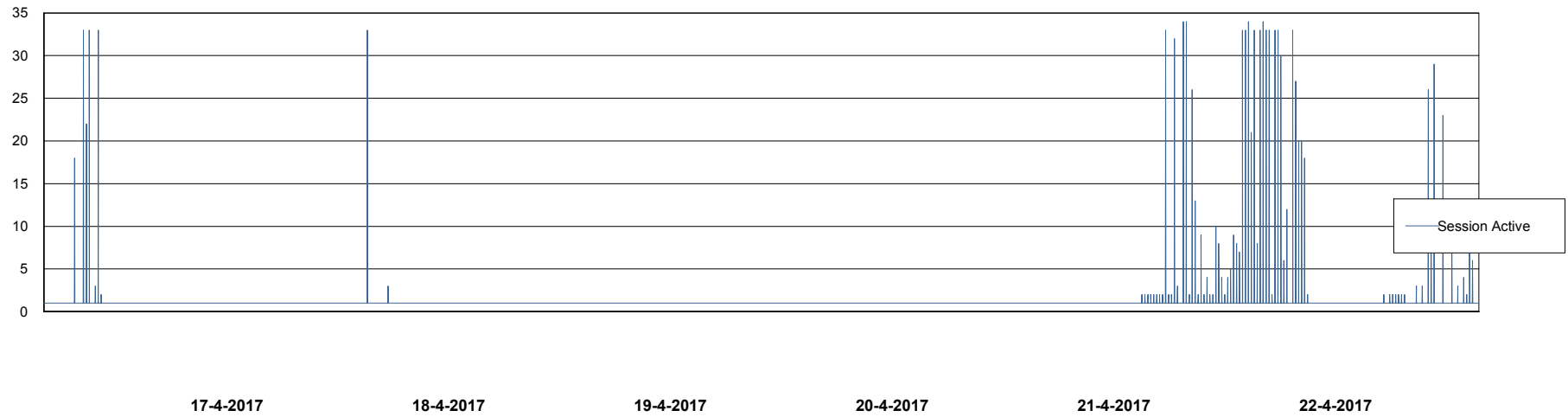
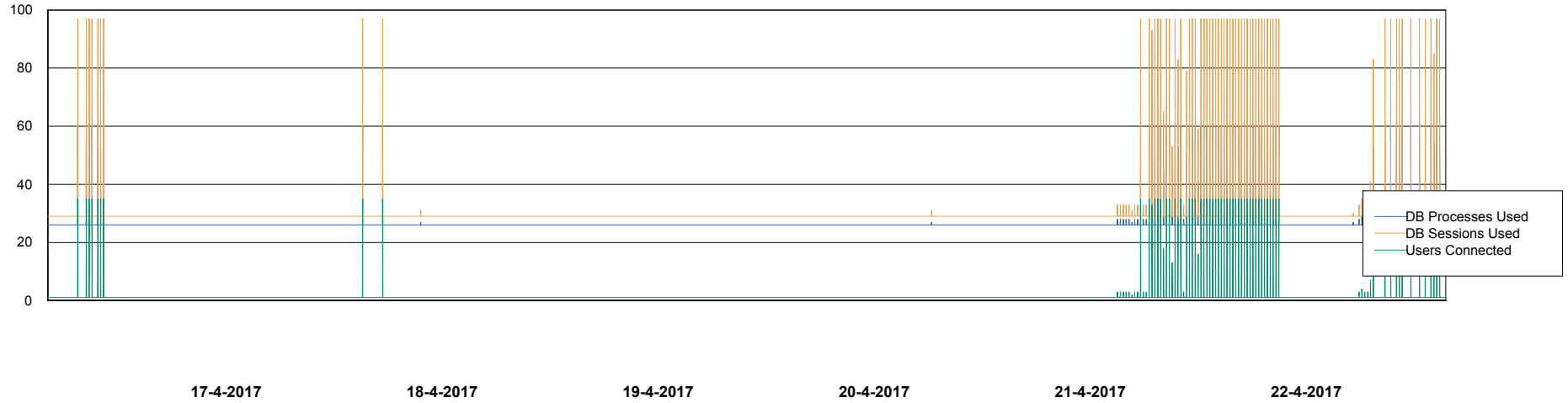
# Weekly SLA Customer Report

Customer NIX\_Production  
Database ID 51



## Database Performance NIXDB\_Standby

DB Processes Max 500  
DB Sessions Max 800



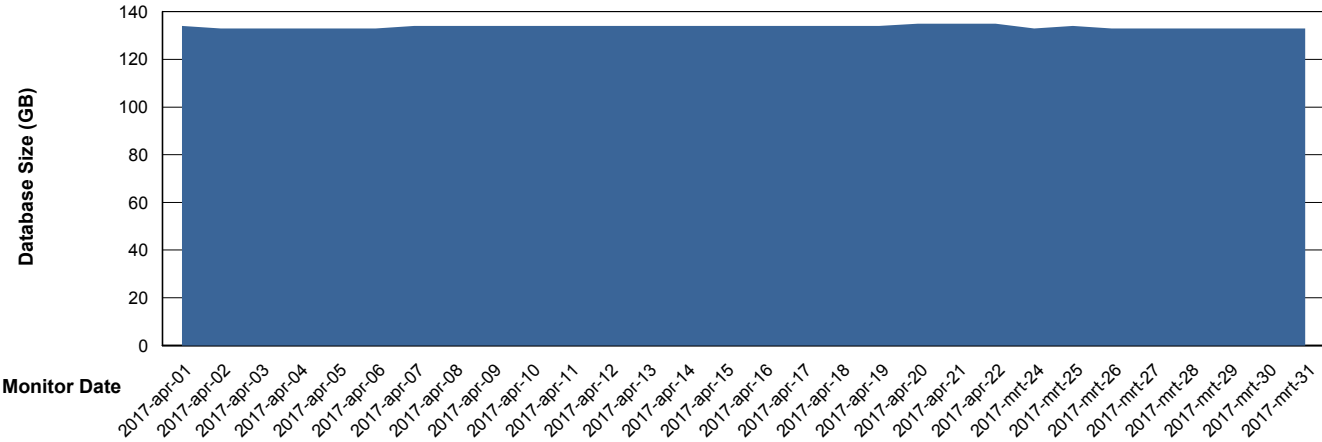
# Weekly SLA Customer Report

Customer NIX\_Production  
 Database ID 51



DATABASE SIZE NIXDB\_Production

## Database growth over last month



Database Tablespace NIXDB\_Production

Date	Tablespace Name	Filesize (Gb)	Usedsize (Gb)	Percentage free
22-4-2017	ABSDATA	59	48	19
	INDX	100	85	15
21-4-2017	ABSDATA	59	48	19
	INDX	100	85	15
20-4-2017	ABSDATA	59	48	19
	INDX	100	85	15
19-4-2017	ABSDATA	59	48	19
	INDX	100	85	15
18-4-2017	ABSDATA	59	48	19
	INDX	100	85	15
17-4-2017	ABSDATA	59	48	19
	INDX	100	85	15
16-4-2017	ABSDATA	59	48	19
	INDX	100	85	15

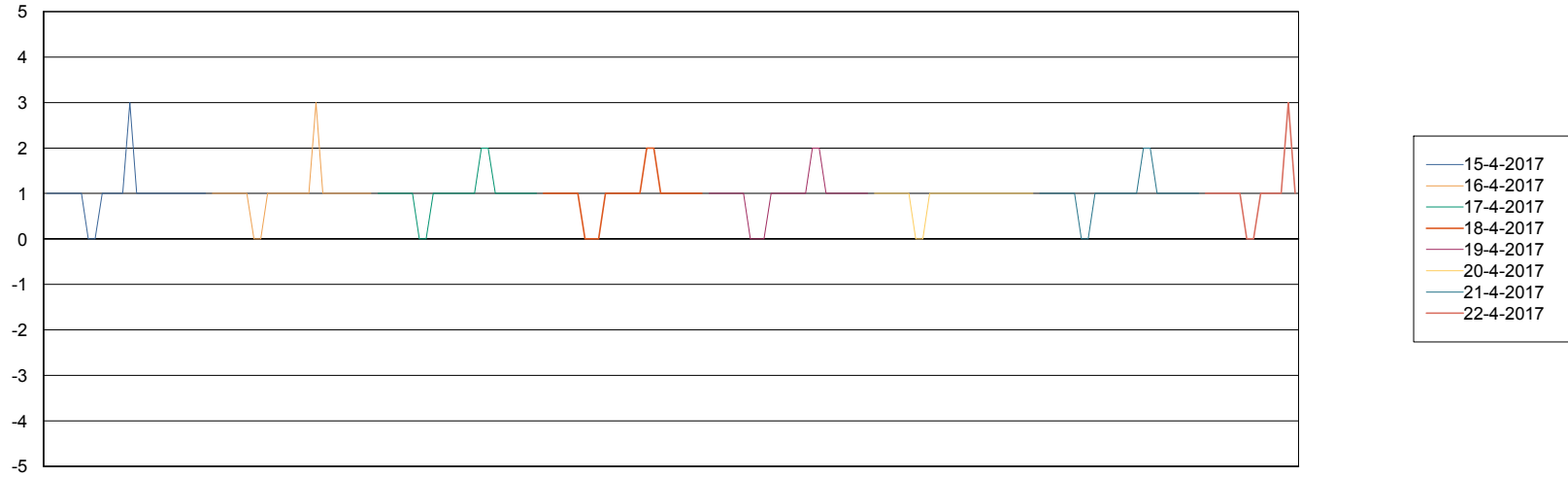
# Weekly SLA Customer Report

Customer NIX\_Production  
Database ID 51



Standby Database Health NIX\_Production

## Recovery lag for last 7 days



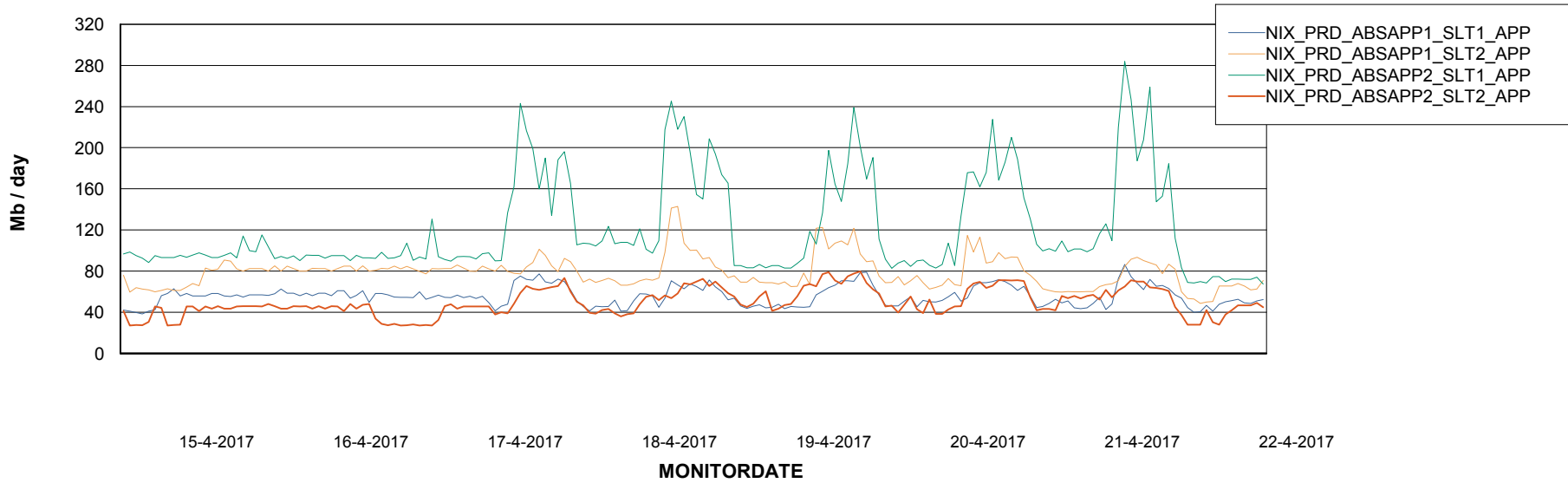
# Weekly SLA Customer Report

Customer NIX\_Production  
Database ID 51

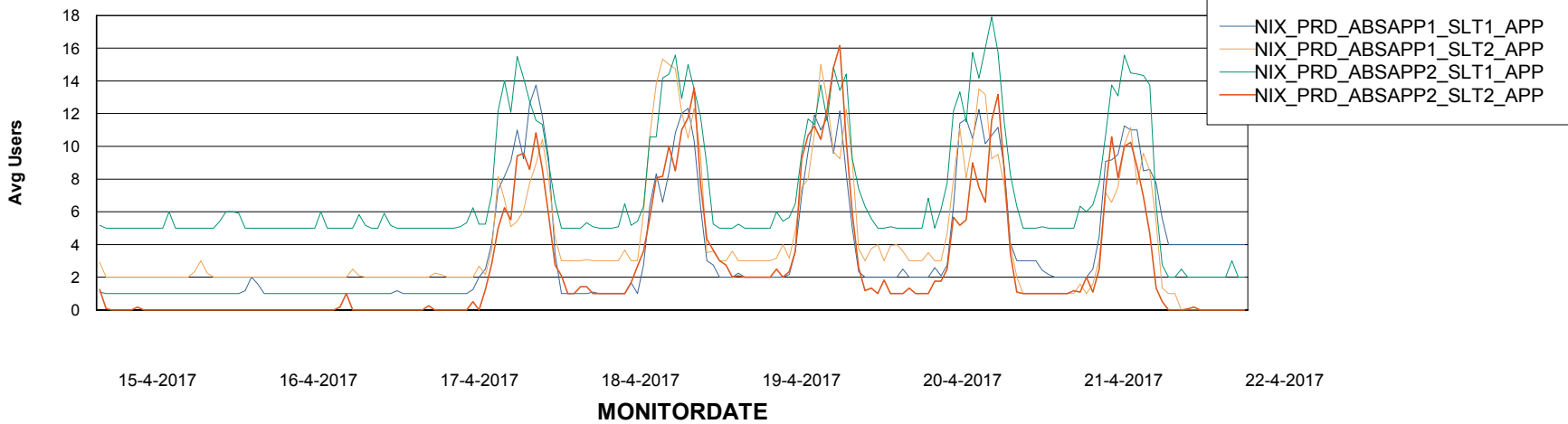


## ABSolute Application Server Services

### Avg memory used per ABS Server Service



### Avg users per day per ABS server



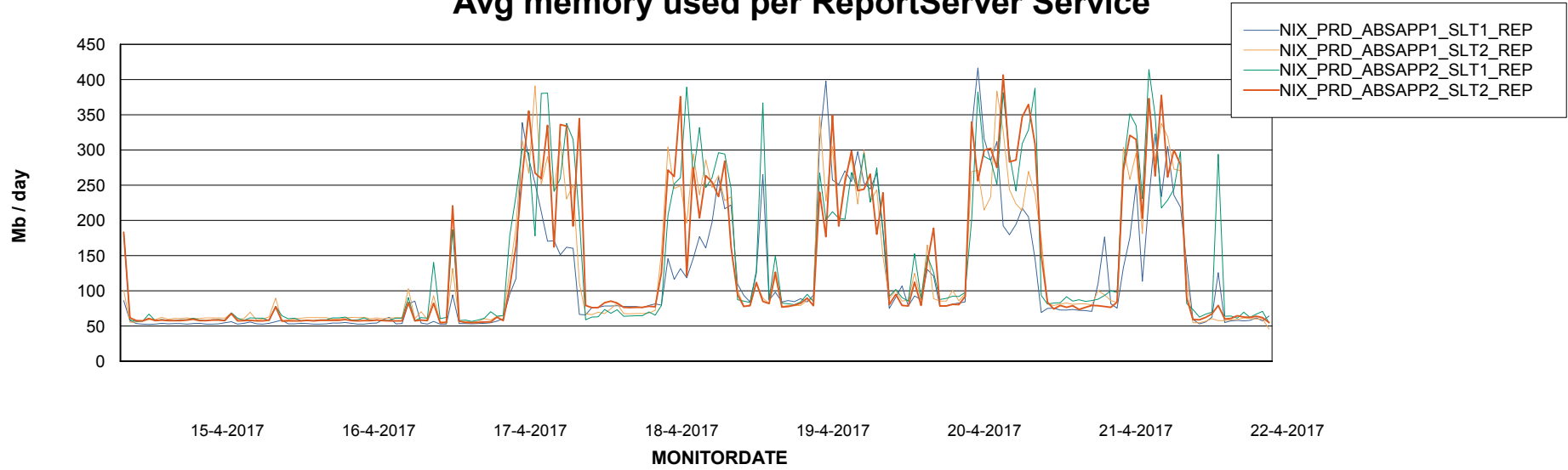
# Weekly SLA Customer Report

Customer NIX\_Production  
Database ID 51



## ABSSolute Application ReportServer Services

### Avg memory used per ReportServer Service



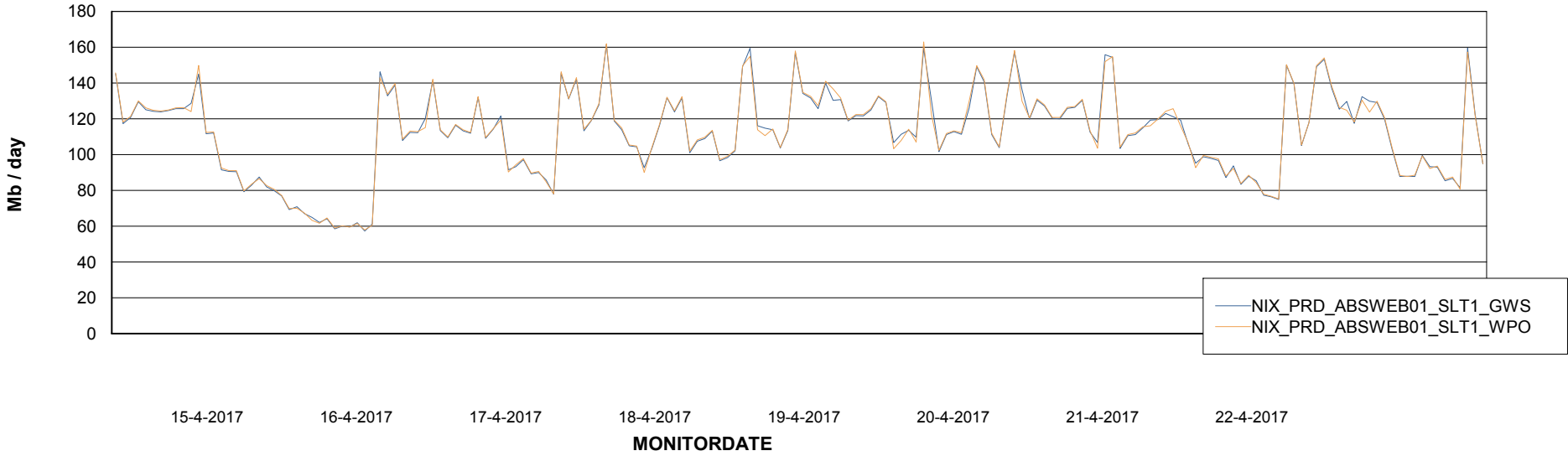
# Weekly SLA Customer Report

Customer NIX\_Production  
Database ID 51



## ABSolute Web Component Services

### Avg memory used per ABS Web component



# Weekly SLA Customer Report

Customer NIX\_Production  
Database ID 51



## Disaster per ABS component

