

# Weekly SLA Customer Report

Customer NIX\_Production  
 Database ID 51



Harddisk Usage NIX\_PRD\_ABSAPP02

	Free disk space on c: (%)	Total disk space on c: (Gb)
8-4-2017	85	200
7-4-2017	85	200
6-4-2017	85	200
5-4-2017	85	200
4-4-2017	85	200
3-4-2017	85	200
2-4-2017	85	200

Harddisk Usage NIX\_PRD\_ABSAPP03

	Free disk space on c: (%)	Total disk space on c: (Gb)
8-4-2017	81	200
7-4-2017	81	200
6-4-2017	81	200
5-4-2017	81	200
4-4-2017	81	200
3-4-2017	81	200
2-4-2017	81	200

# Weekly SLA Customer Report

Customer NIX\_Production  
Database ID 51



## Harddisk Usage NIX\_PRD\_ABSWEB01

	Free disk space on c: (%)	Total disk space on c: (Gb)
8-4-2017	92	300
7-4-2017	92	300
6-4-2017	92	300
5-4-2017	92	300
4-4-2017	92	300
3-4-2017	92	300
2-4-2017	92	300

## Harddisk Usage NIX\_PRD\_ORACLE\_B11

	Free disk space on c: (%)	Total disk space on c: (Gb)	Free disk space on e: (%)	Total disk space on e: (Gb)	Free disk space on f: (%)	Total disk space on f: (Gb)	Free disk space on g: (%)	Total disk space on g: (Gb)
8-4-2017	38	279	51	558	47	279	64	558
7-4-2017	38	279	51	558	47	279	60	558
6-4-2017	38	279	51	558	47	279	61	558
5-4-2017	39	279	51	558	47	279	62	558
4-4-2017	39	279	51	558	47	279	63	558
3-4-2017	38	279	50	558	47	279	64	558
2-4-2017	38	279	51	558	47	279	65	558

# Weekly SLA Customer Report

Customer NIX\_Production  
Database ID 51



## Harddisk Usage NIX\_PRD\_ORCDB1

	Free disk space on c: (%)	Total disk space on c: (Gb)	Free disk space on e: (%)	Total disk space on e: (Gb)	Free disk space on f: (%)	Total disk space on f: (Gb)	Free disk space on g: (%)	Total disk space on g: (Gb)
8-4-2017	40	279	76	558	82	558	54	279
7-4-2017	40	279	76	558	82	558	54	279
6-4-2017	40	279	76	558	82	558	54	279
5-4-2017	40	279	76	558	82	558	54	279
4-4-2017	40	279	79	558	82	558	55	279
3-4-2017	40	279	81	558	82	558	55	279
2-4-2017	40	279	81	558	82	558	55	279

## Harddisk Usage NIX\_PRD\_ORCDB2

	Free disk space on c: (%)	Total disk space on c: (Gb)	Free disk space on e: (%)	Total disk space on e: (Gb)	Free disk space on f: (%)	Total disk space on f: (Gb)	Free disk space on g: (%)	Total disk space on g: (Gb)
8-4-2017	40	279	76	558	82	558	54	279
7-4-2017	40	279	76	558	82	558	54	279
6-4-2017	40	279	76	558	82	558	54	279
5-4-2017	40	279	76	558	82	558	54	279
4-4-2017	40	279	79	558	82	558	55	279
3-4-2017	40	279	81	558	82	558	55	279
2-4-2017	40	279	81	558	82	558	55	279

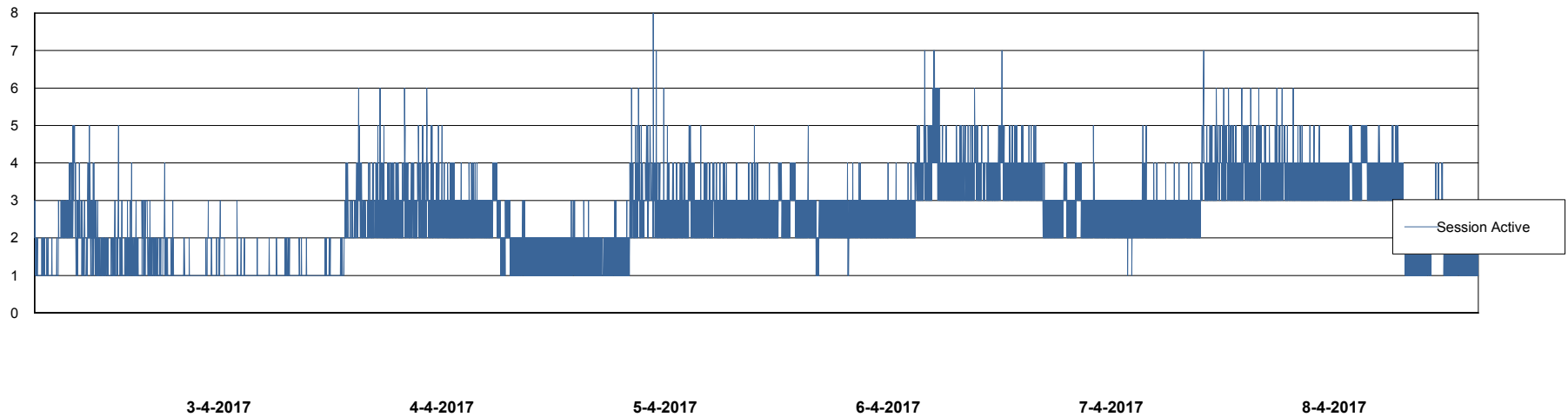
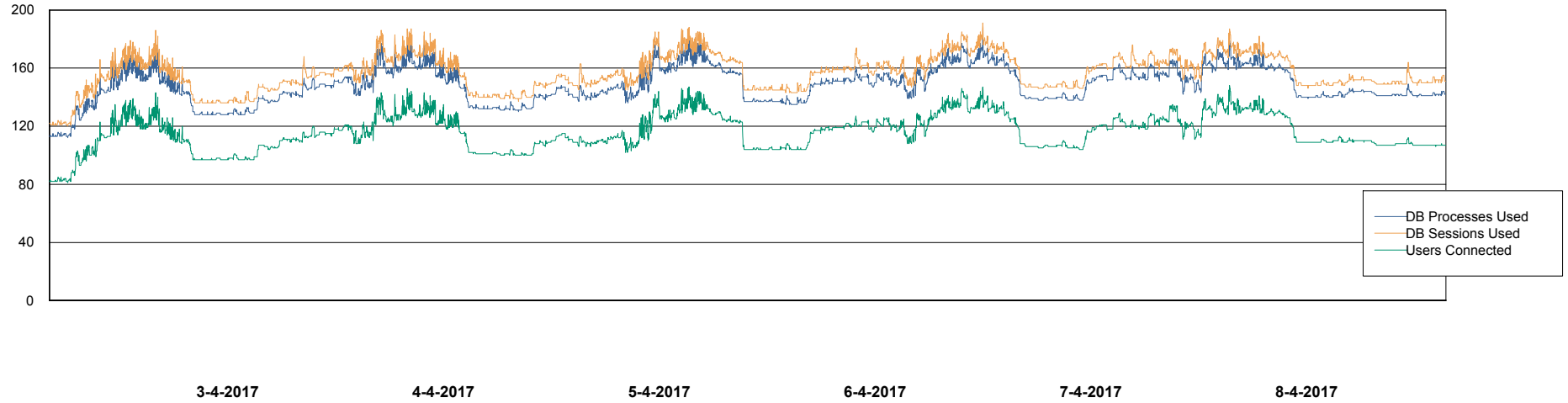
# Weekly SLA Customer Report

Customer NIX\_Production  
Database ID 51



## Database Performance NIXDB\_Production

DB Processes Max 500  
DB Sessions Max 800



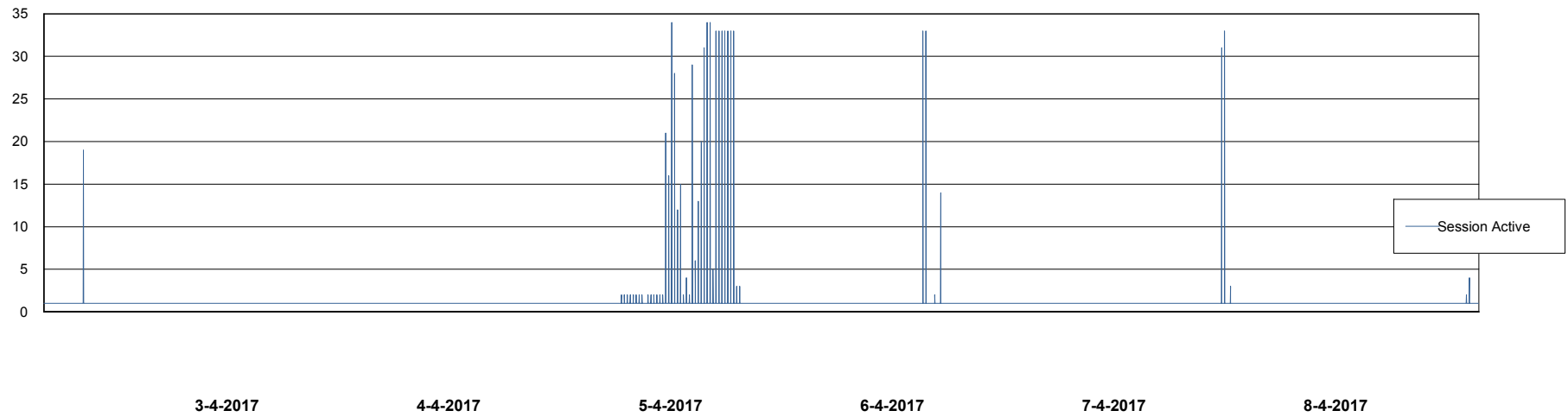
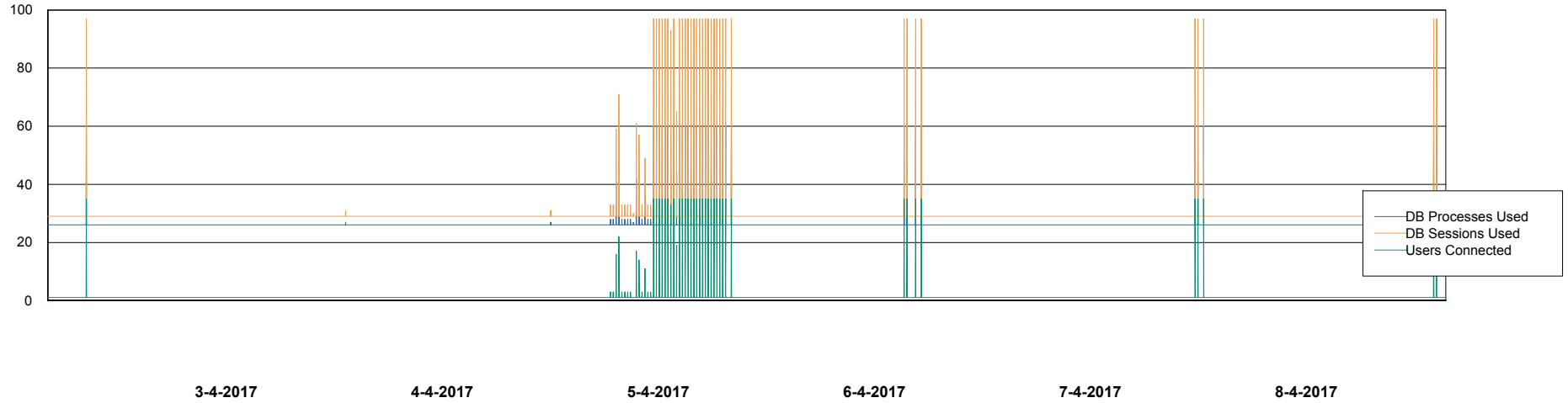
# Weekly SLA Customer Report

Customer NIX\_Production  
Database ID 51



## Database Performance NIXDB\_Standby

DB Processes Max 500  
DB Sessions Max 800



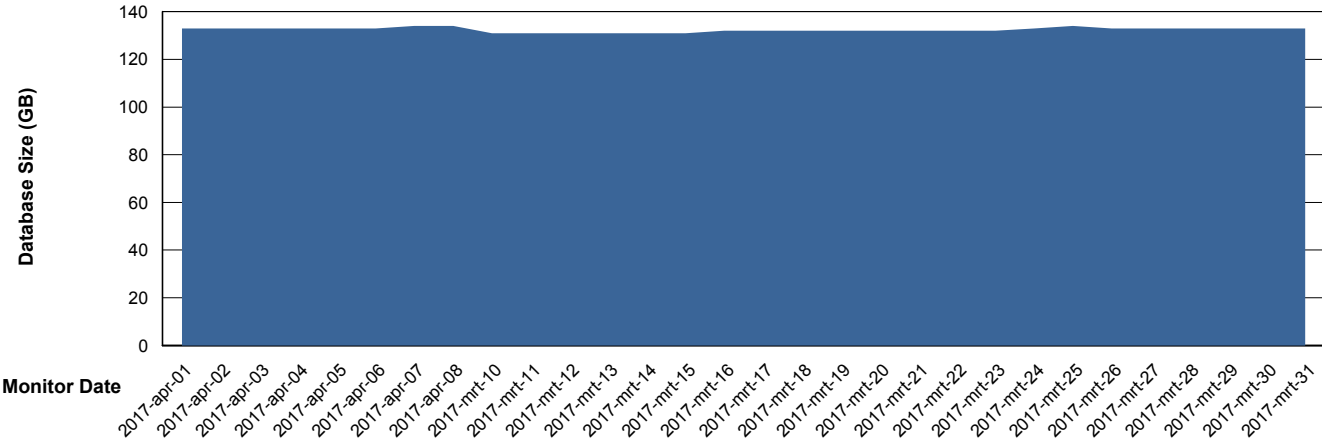
# Weekly SLA Customer Report

Customer NIX\_Production  
 Database ID 51



DATABASE SIZE NIXDB\_Production

## Database growth over last month



Database Tablespace NIXDB\_Production

Date	Tablespace Name	Filesize (Gb)	Usedsize (Gb)	Percentage free
8-4-2017	ABSDATA	59	48	19
	INDX	100	84	16
7-4-2017	ABSDATA	59	48	19
	INDX	100	84	16
6-4-2017	ABSDATA	59	48	19
	INDX	100	84	16
5-4-2017	ABSDATA	59	48	19
	INDX	100	84	16
4-4-2017	ABSDATA	59	48	19
	INDX	100	84	16
3-4-2017	ABSDATA	59	48	19
	INDX	100	84	16
2-4-2017	ABSDATA	59	48	19
	INDX	100	84	16

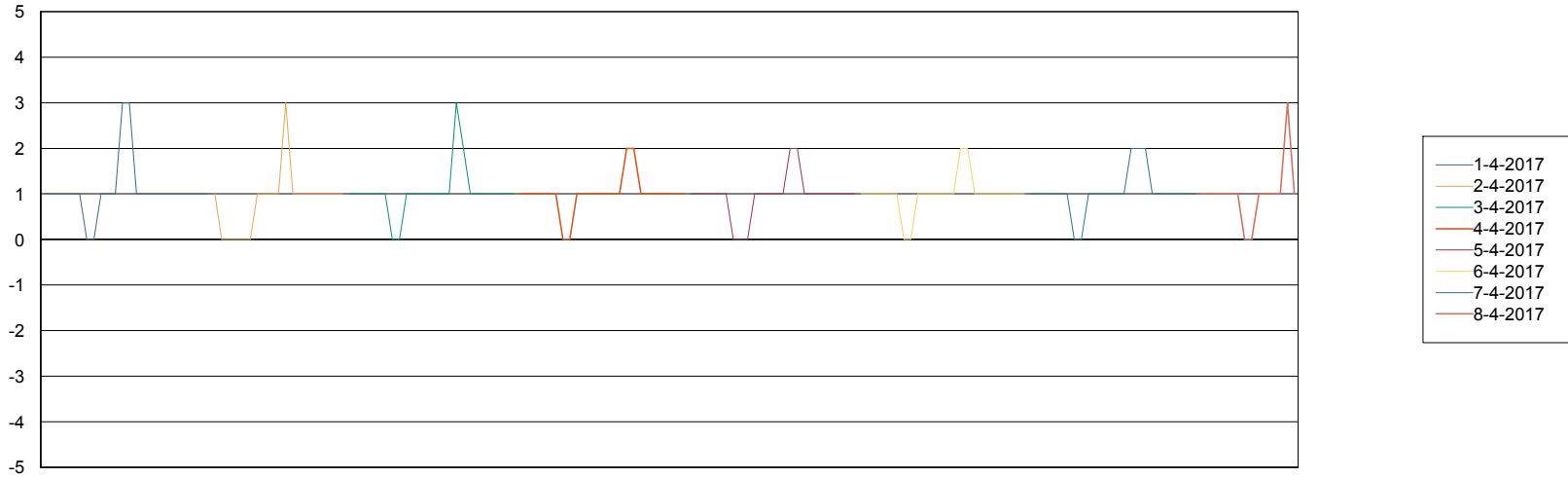
# Weekly SLA Customer Report

Customer NIX\_Production  
Database ID 51



Standby Database Health NIX\_Production

## Recovery lag for last 7 days



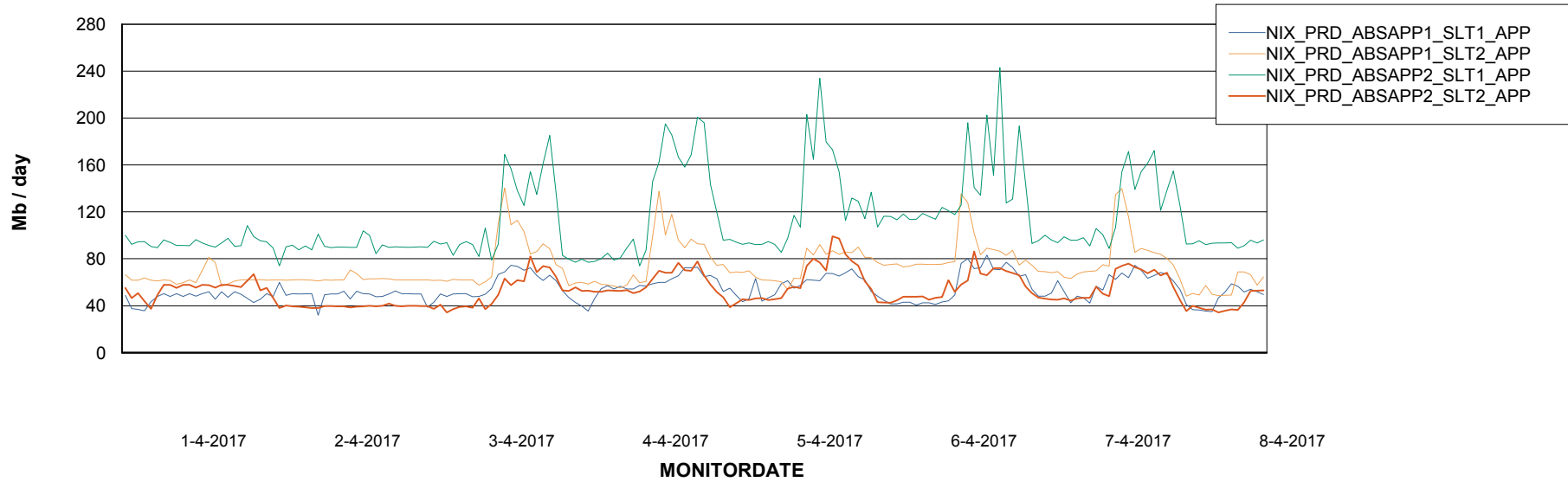
# Weekly SLA Customer Report

Customer NIX\_Production  
Database ID 51

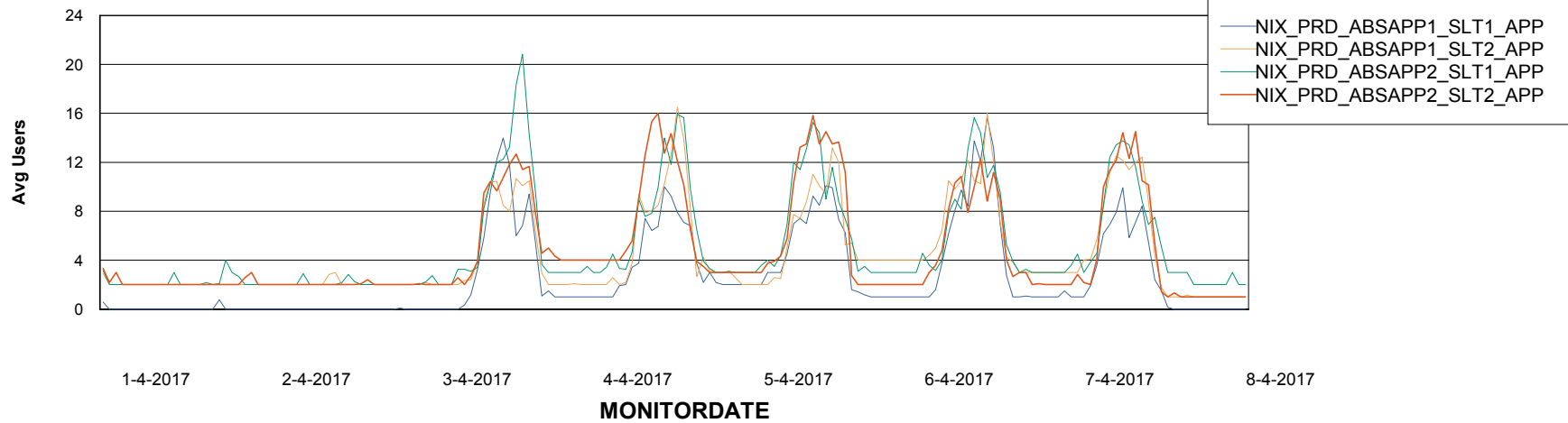


## ABSolute Application Server Services

### Avg memory used per ABS Server Service



### Avg users per day per ABS server



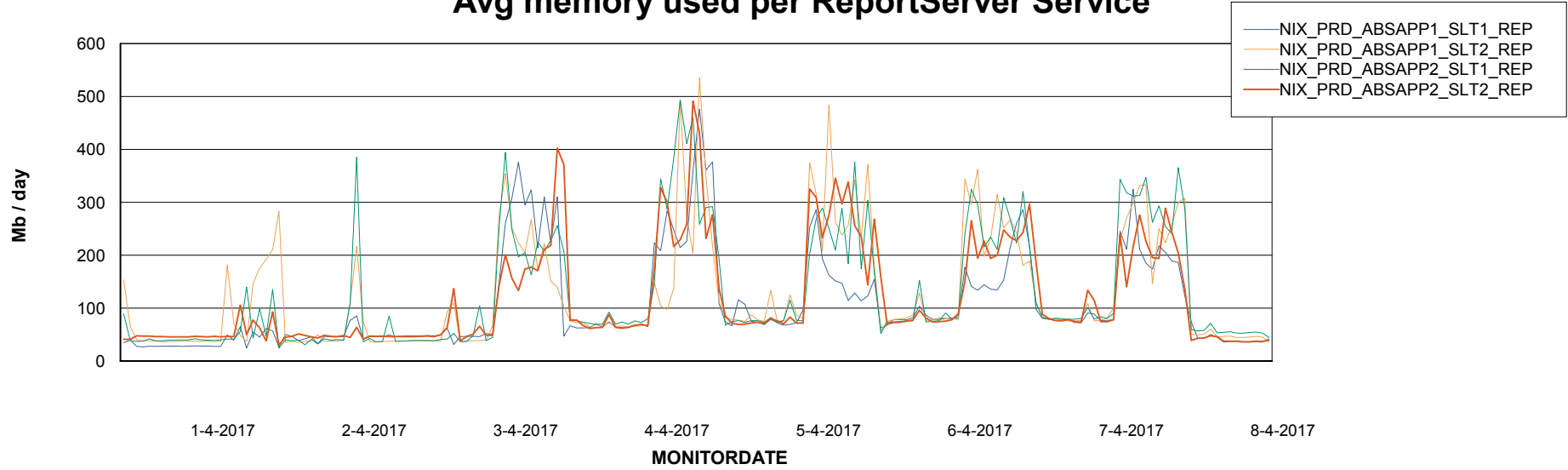
# Weekly SLA Customer Report

Customer NIX\_Production  
Database ID 51



## ABSSolute Application ReportServer Services

### Avg memory used per ReportServer Service



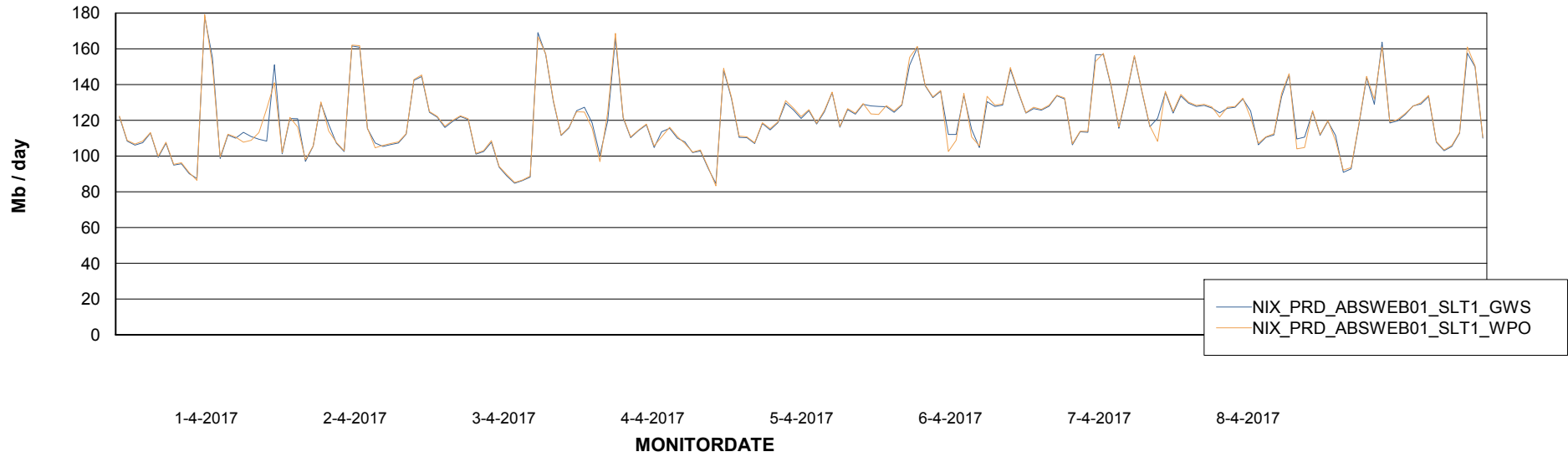
# Weekly SLA Customer Report

Customer NIX\_Production  
Database ID 51



## ABSSolute Web Component Services

### Avg memory used per ABS Web component



# Weekly SLA Customer Report

Customer NIX\_Production  
Database ID 51



## Disaster per ABS component

