

Weekly SLA Customer Report

Customer NIX_Production
 Database ID 51



Harddisk Usage NIX_PRD_ABSAPP02

| | Free disk space on c: (%) | Total disk space on c: (Gb) |
|-----------|---------------------------|-----------------------------|
| 1-4-2017 | 85 | 200 |
| 31-3-2017 | 85 | 200 |
| 30-3-2017 | 85 | 200 |
| 29-3-2017 | 85 | 200 |
| 28-3-2017 | 85 | 200 |
| 27-3-2017 | 85 | 200 |
| 26-3-2017 | 85 | 200 |

Harddisk Usage NIX_PRD_ABSAPP03

| | Free disk space on c: (%) | Total disk space on c: (Gb) |
|-----------|---------------------------|-----------------------------|
| 1-4-2017 | 81 | 200 |
| 31-3-2017 | 81 | 200 |
| 30-3-2017 | 81 | 200 |
| 29-3-2017 | 81 | 200 |
| 28-3-2017 | 81 | 200 |
| 27-3-2017 | 81 | 200 |
| 26-3-2017 | 81 | 200 |

Weekly SLA Customer Report

Customer NIX_Production
 Database ID 51



Harddisk Usage NIX_PRD_ABSWEB01

| | Free disk space on c: (%) | Total disk space on c: (Gb) |
|-----------|---------------------------|-----------------------------|
| 1-4-2017 | 92 | 300 |
| 31-3-2017 | 92 | 300 |
| 30-3-2017 | 92 | 300 |
| 29-3-2017 | 92 | 300 |
| 28-3-2017 | 92 | 300 |
| 27-3-2017 | 92 | 300 |
| 26-3-2017 | 92 | 300 |

Harddisk Usage NIX_PRD_ORACLE_B11

| | Free disk space on c: (%) | Total disk space on c: (Gb) | Free disk space on e: (%) | Total disk space on e: (Gb) | Free disk space on f: (%) | Total disk space on f: (Gb) | Free disk space on g: (%) | Total disk space on g: (Gb) |
|-----------|---------------------------|-----------------------------|---------------------------|-----------------------------|---------------------------|-----------------------------|---------------------------|-----------------------------|
| 1-4-2017 | 38 | 279 | 51 | 558 | 47 | 279 | 64 | 558 |
| 31-3-2017 | 38 | 279 | 51 | 558 | 47 | 279 | 60 | 558 |
| 30-3-2017 | 37 | 279 | 51 | 558 | 47 | 279 | 61 | 558 |
| 29-3-2017 | 38 | 279 | 51 | 558 | 47 | 279 | 62 | 558 |
| 28-3-2017 | 41 | 279 | 51 | 558 | 47 | 279 | 63 | 558 |
| 27-3-2017 | 38 | 279 | 51 | 558 | 47 | 279 | 64 | 558 |
| 26-3-2017 | 37 | 279 | 51 | 558 | 47 | 279 | 65 | 558 |

Weekly SLA Customer Report

Customer NIX_Production
Database ID 51



Harddisk Usage NIX_PRD_ORCDB1

| | Free disk space on c: (%) | Total disk space on c: (Gb) | Free disk space on e: (%) | Total disk space on e: (Gb) | Free disk space on f: (%) | Total disk space on f: (Gb) | Free disk space on g: (%) | Total disk space on g: (Gb) |
|-----------|---------------------------|-----------------------------|---------------------------|-----------------------------|---------------------------|-----------------------------|---------------------------|-----------------------------|
| 1-4-2017 | 51 | 279 | 81 | 558 | 82 | 558 | 55 | 279 |
| 31-3-2017 | 54 | 279 | 81 | 558 | 82 | 558 | 55 | 279 |
| 30-3-2017 | 54 | 279 | 81 | 558 | 82 | 558 | 55 | 279 |
| 29-3-2017 | 54 | 279 | 81 | 558 | 82 | 558 | 55 | 279 |
| 28-3-2017 | 54 | 279 | 81 | 558 | 82 | 558 | 56 | 279 |
| 27-3-2017 | 54 | 279 | 81 | 558 | 82 | 558 | 56 | 279 |
| 26-3-2017 | 54 | 279 | 81 | 558 | 82 | 558 | 58 | 279 |

Harddisk Usage NIX_PRD_ORCDB2

| | Free disk space on c: (%) | Total disk space on c: (Gb) | Free disk space on e: (%) | Total disk space on e: (Gb) | Free disk space on f: (%) | Total disk space on f: (Gb) | Free disk space on g: (%) | Total disk space on g: (Gb) |
|-----------|---------------------------|-----------------------------|---------------------------|-----------------------------|---------------------------|-----------------------------|---------------------------|-----------------------------|
| 1-4-2017 | 51 | 279 | 81 | 558 | 82 | 558 | 55 | 279 |
| 31-3-2017 | 54 | 279 | 81 | 558 | 82 | 558 | 55 | 279 |
| 30-3-2017 | 54 | 279 | 81 | 558 | 82 | 558 | 55 | 279 |
| 29-3-2017 | 54 | 279 | 81 | 558 | 82 | 558 | 55 | 279 |
| 28-3-2017 | 54 | 279 | 81 | 558 | 82 | 558 | 56 | 279 |
| 27-3-2017 | 54 | 279 | 81 | 558 | 82 | 558 | 56 | 279 |
| 26-3-2017 | 54 | 279 | 81 | 558 | 82 | 558 | 58 | 279 |

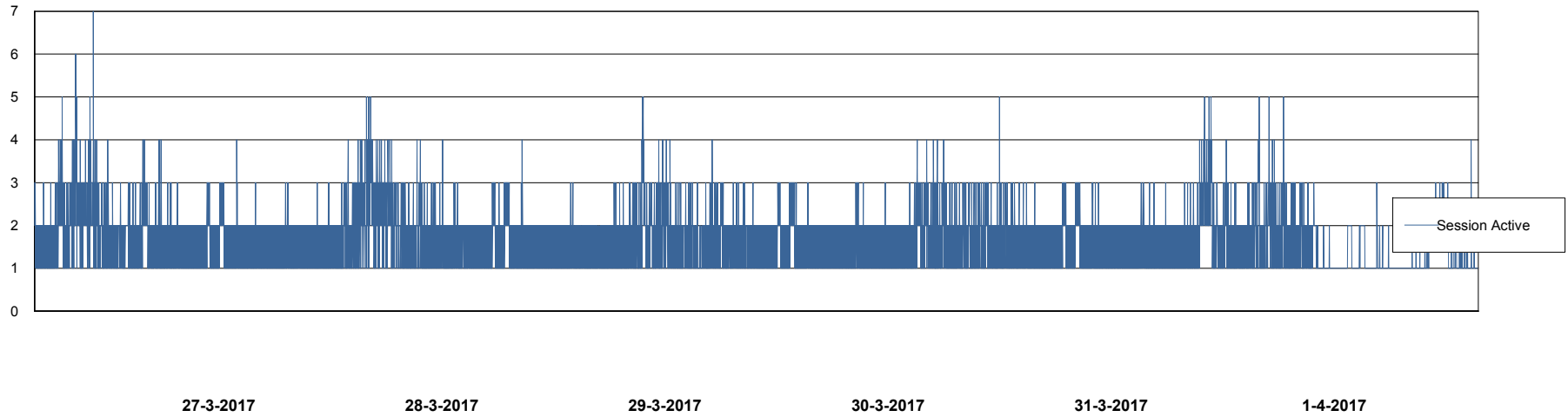
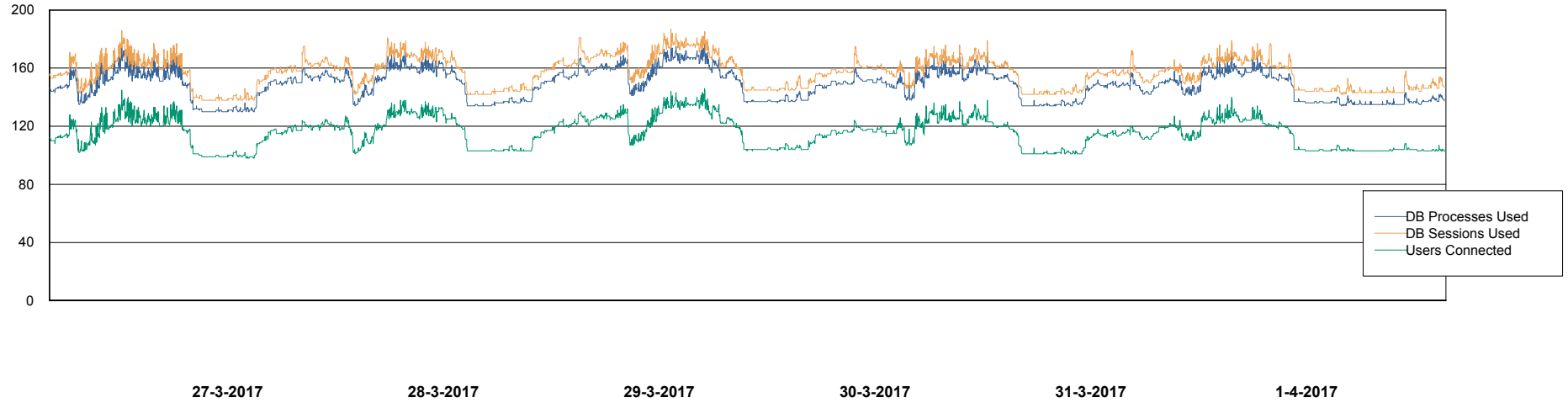
Weekly SLA Customer Report

Customer NIX_Production
Database ID 51



Database Performance NIXDB_Production

DB Processes Max 500
DB Sessions Max 800



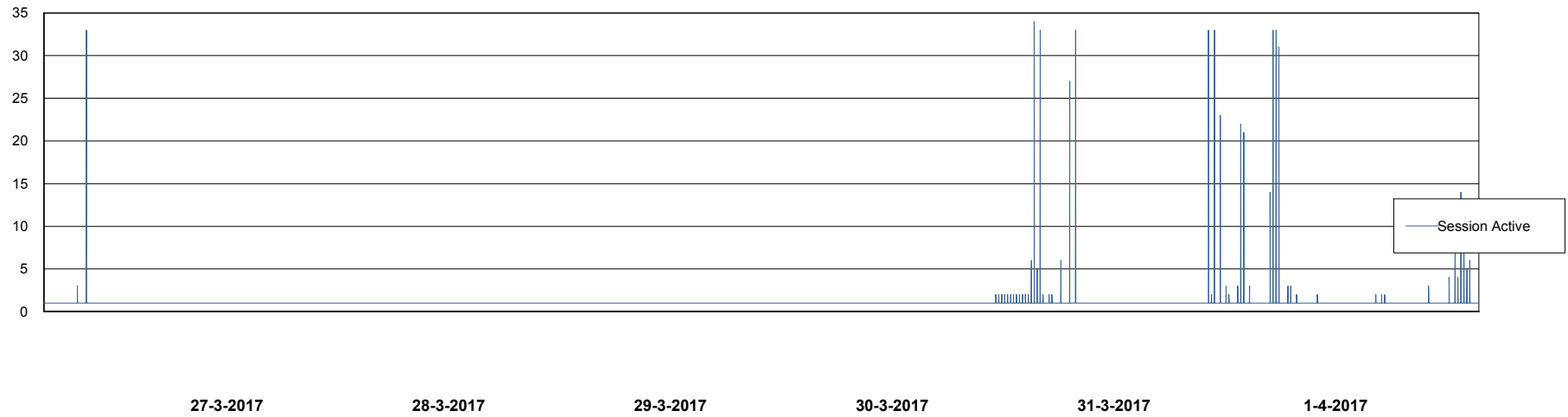
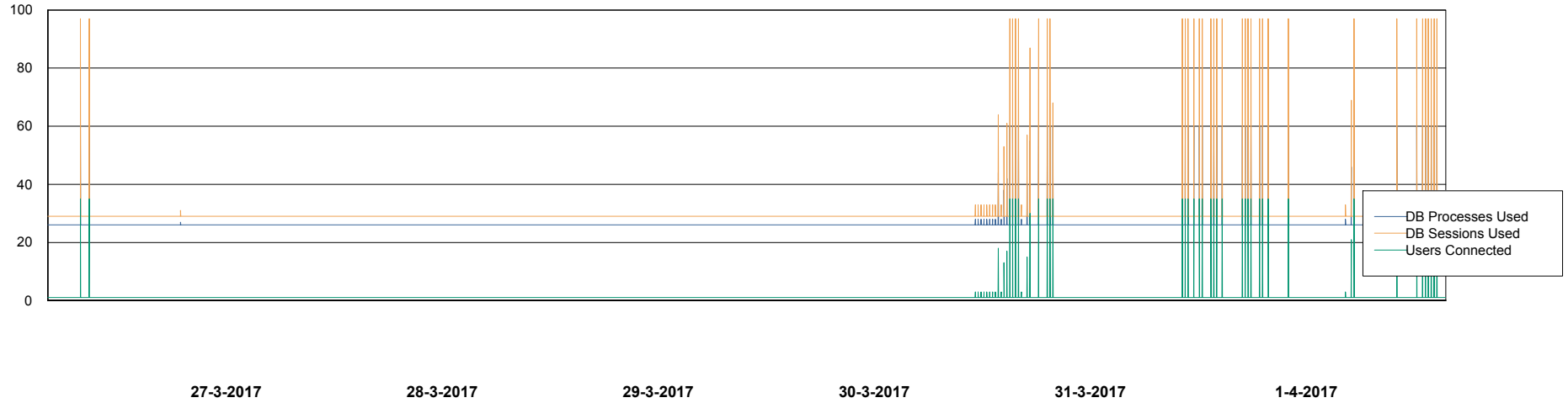
Weekly SLA Customer Report

Customer NIX_Production
Database ID 51



Database Performance NIXDB_Standby

DB Processes Max 500
DB Sessions Max 800



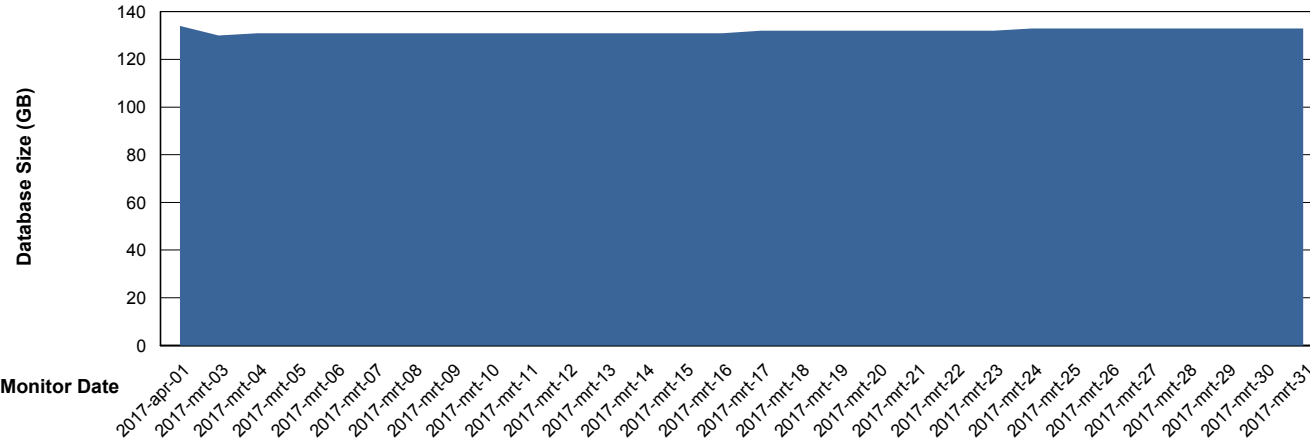
Weekly SLA Customer Report

Customer NIX_Production
 Database ID 51



DATABASE SIZE NIXDB_Production

Database growth over last month



Database Tablespace NIXDB_Production

| Date | Tablespace Name | Filesize (Gb) | Usedsize (Gb) | Percentage free |
|-----------|-----------------|---------------|---------------|-----------------|
| 1-4-2017 | ABSDATA | 59 | 48 | 19 |
| | INDX | 100 | 84 | 16 |
| 31-3-2017 | ABSDATA | 59 | 48 | 19 |
| | INDX | 100 | 84 | 16 |
| 30-3-2017 | ABSDATA | 59 | 48 | 19 |
| | INDX | 100 | 84 | 16 |
| 29-3-2017 | ABSDATA | 59 | 48 | 19 |
| | INDX | 100 | 84 | 16 |
| 28-3-2017 | ABSDATA | 59 | 48 | 19 |
| | INDX | 100 | 84 | 16 |
| 27-3-2017 | ABSDATA | 59 | 47 | 20 |
| | INDX | 100 | 84 | 16 |
| 26-3-2017 | ABSDATA | 59 | 47 | 20 |
| | INDX | 100 | 84 | 16 |

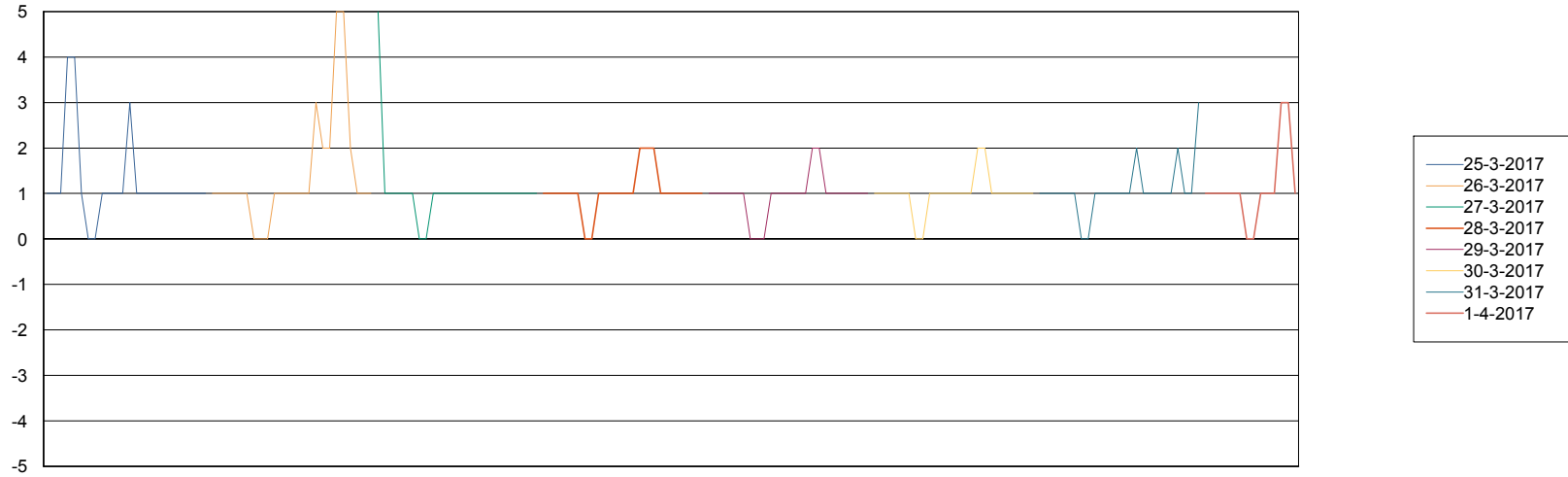
Weekly SLA Customer Report

Customer NIX_Production
Database ID 51



Standby Database Health NIX_Production

Recovery lag for last 7 days



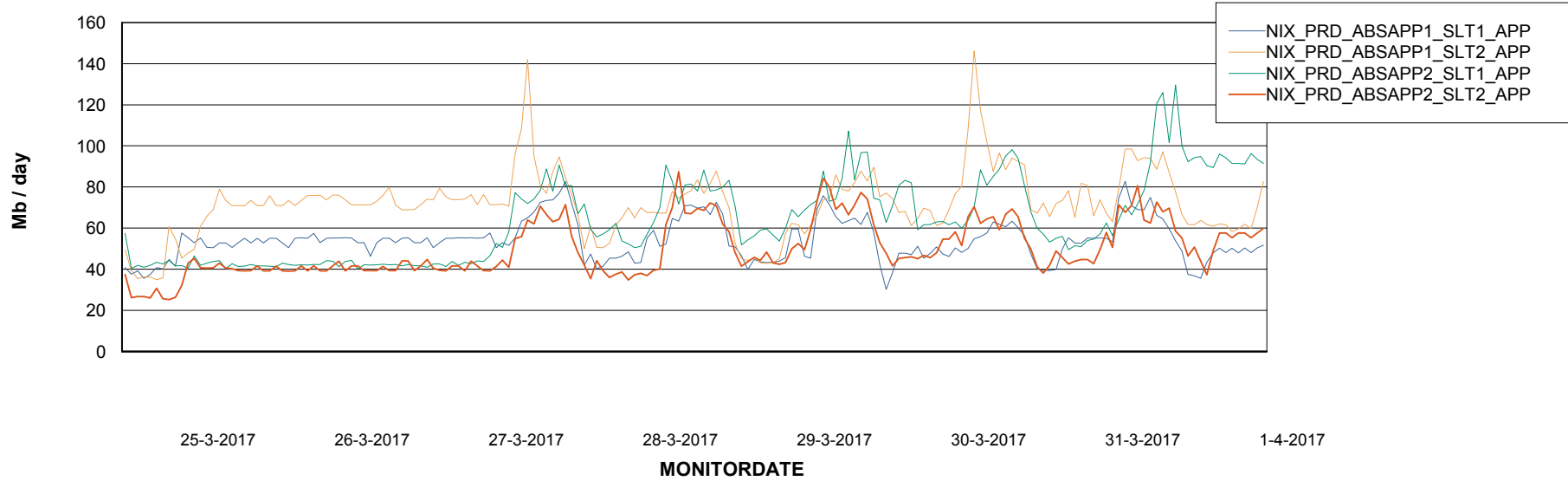
Weekly SLA Customer Report

Customer NIX_Production
Database ID 51

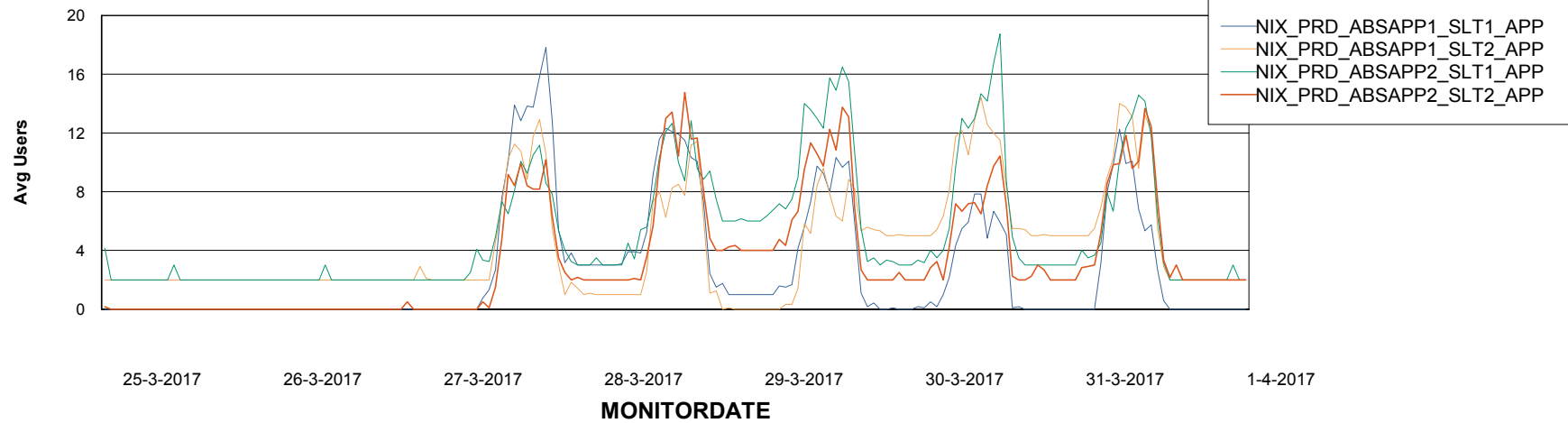


ABSSolute Application Server Services

Avg memory used per ABS Server Service



Avg users per day per ABS server



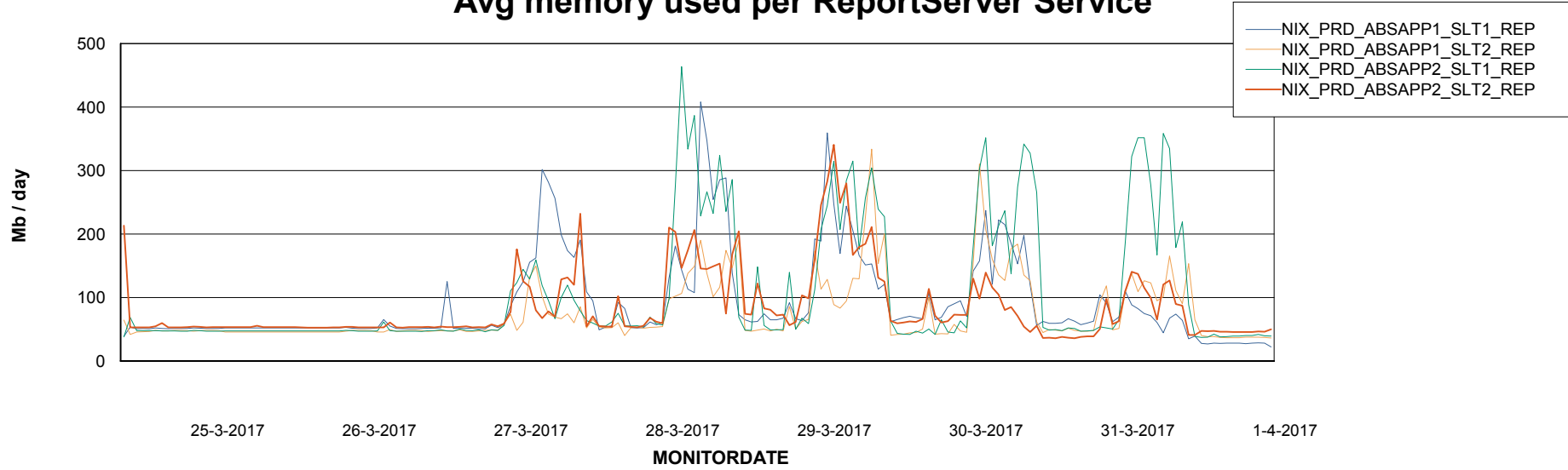
Weekly SLA Customer Report

Customer NIX_Production
Database ID 51



ABSSolute Application ReportServer Services

Avg memory used per ReportServer Service



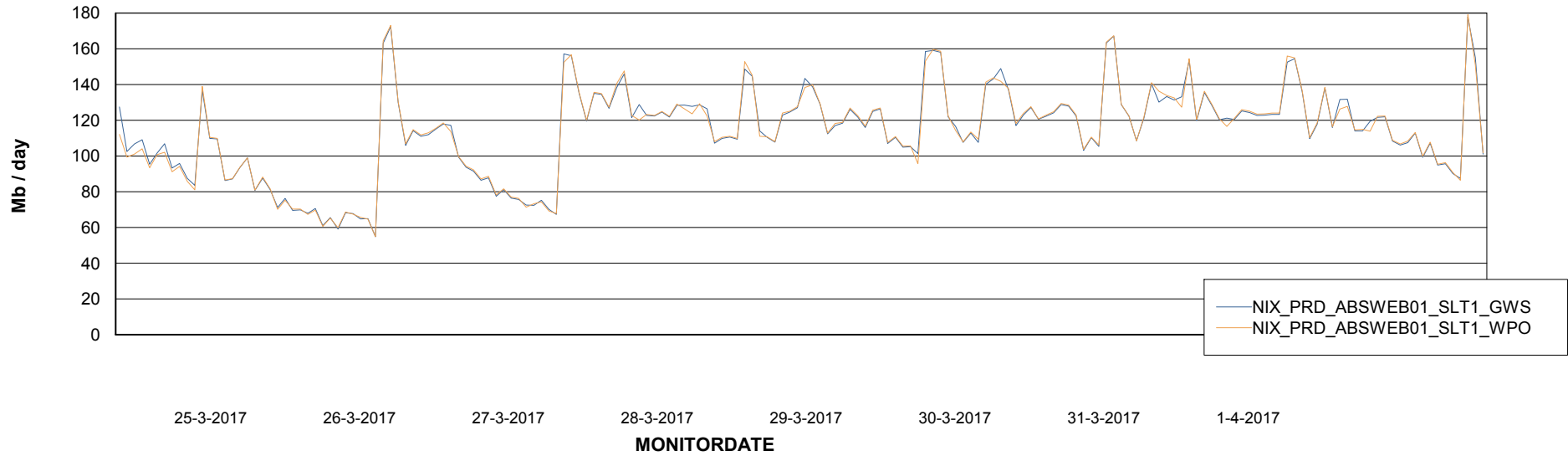
Weekly SLA Customer Report

Customer NIX_Production
Database ID 51



ABSolute Web Component Services

Avg memory used per ABS Web component



Weekly SLA Customer Report

Customer NIX_Production
Database ID 51



Disaster per ABS component

