

# Weekly SLA Customer Report

Customer NIX\_Production  
Database ID 51



Harddisk Usage NIX\_PRD\_ABSAPP02

	Free disk space on c: (%)	Total disk space on c: (Gb)
25-3-2017	85	200
24-3-2017	85	200
23-3-2017	85	200
22-3-2017	85	200
21-3-2017	85	200
20-3-2017	85	200
19-3-2017	85	200

Harddisk Usage NIX\_PRD\_ABSAPP03

	Free disk space on c: (%)	Total disk space on c: (Gb)
25-3-2017	81	200
24-3-2017	81	200
23-3-2017	81	200
22-3-2017	81	200
21-3-2017	81	200
20-3-2017	81	200
19-3-2017	81	200

# Weekly SLA Customer Report

Customer NIX\_Production  
Database ID 51



## Harddisk Usage NIX\_PRD\_ABSWEB01

	Free disk space on c: (%)	Total disk space on c: (Gb)
25-3-2017	92	300
24-3-2017	92	300
23-3-2017	92	300
22-3-2017	92	300
21-3-2017	92	300
20-3-2017	92	300
19-3-2017	92	300

## Harddisk Usage NIX\_PRD\_ORACLE\_B11

	Free disk space on c: (%)	Total disk space on c: (Gb)	Free disk space on e: (%)	Total disk space on e: (Gb)	Free disk space on f: (%)	Total disk space on f: (Gb)	Free disk space on g: (%)	Total disk space on g: (Gb)
25-3-2017	38	279	51	558	47	279	64	558
24-3-2017	38	279	51	558	47	279	61	558
23-3-2017	37	279	51	558	47	279	62	558
22-3-2017	38	279	51	558	47	279	62	558
21-3-2017	38	279	51	558	47	279	59	558
20-3-2017	38	279	51	558	47	279	64	558
19-3-2017	37	279	51	558	47	279	65	558

# Weekly SLA Customer Report

Customer NIX\_Production  
Database ID 51



## Harddisk Usage NIX\_PRD\_ORCDB1

	Free disk space on c: (%)	Total disk space on c: (Gb)	Free disk space on e: (%)	Total disk space on e: (Gb)	Free disk space on f: (%)	Total disk space on f: (Gb)	Free disk space on g: (%)	Total disk space on g: (Gb)
25-3-2017	54	279	81	558	82	558	58	279
24-3-2017	54	279	81	558	82	558	62	279
23-3-2017	54	279	81	558	82	558	62	279
22-3-2017	54	279	81	558	82	558	62	279
21-3-2017	54	279	81	558	82	558	63	279
20-3-2017	54	279	81	558	82	558	63	279
19-3-2017	54	279	81	558	82	558	63	279

## Harddisk Usage NIX\_PRD\_ORCDB2

	Free disk space on c: (%)	Total disk space on c: (Gb)	Free disk space on e: (%)	Total disk space on e: (Gb)	Free disk space on f: (%)	Total disk space on f: (Gb)	Free disk space on g: (%)	Total disk space on g: (Gb)
25-3-2017	54	279	81	558	82	558	58	279
24-3-2017	54	279	81	558	82	558	62	279
23-3-2017	54	279	81	558	82	558	62	279
22-3-2017	54	279	81	558	82	558	62	279
21-3-2017	54	279	81	558	82	558	63	279
20-3-2017	54	279	81	558	82	558	63	279
19-3-2017	54	279	81	558	82	558	63	279

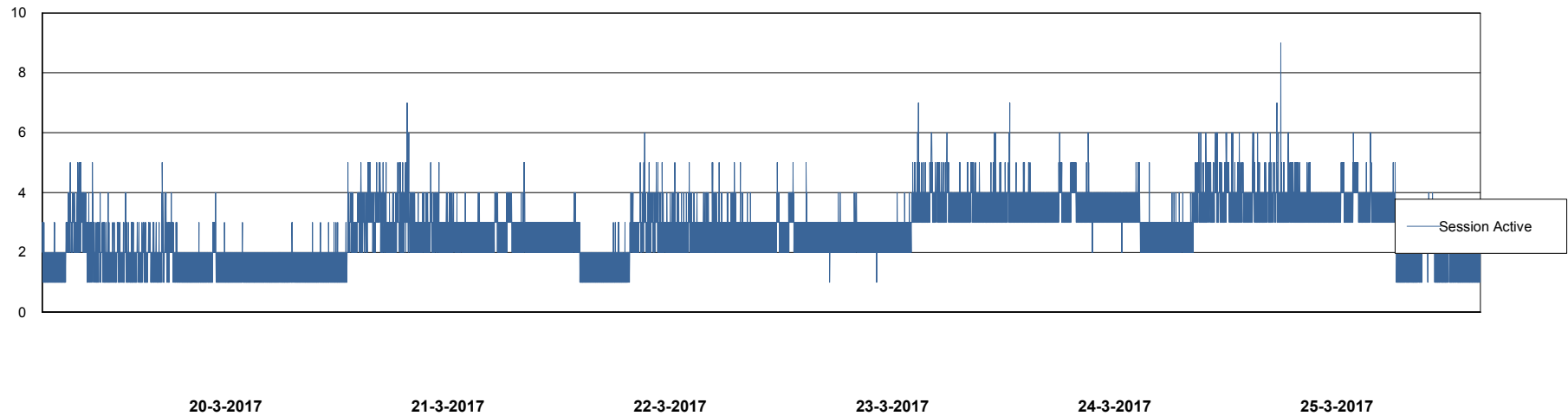
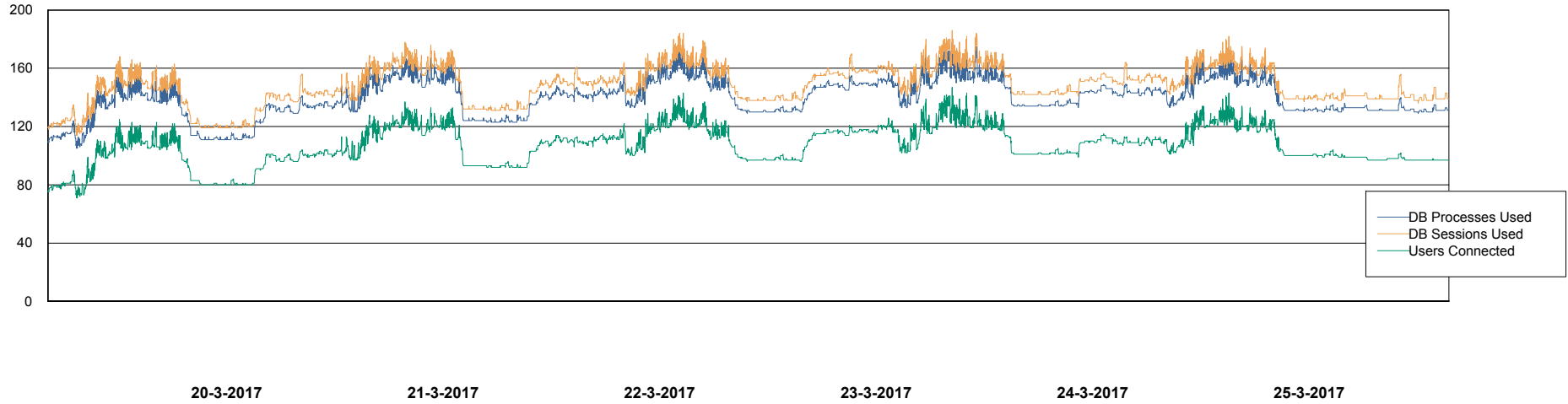
# Weekly SLA Customer Report

Customer NIX\_Production  
Database ID 51



## Database Performance NIXDB\_Production

DB Processes Max 500  
DB Sessions Max 800



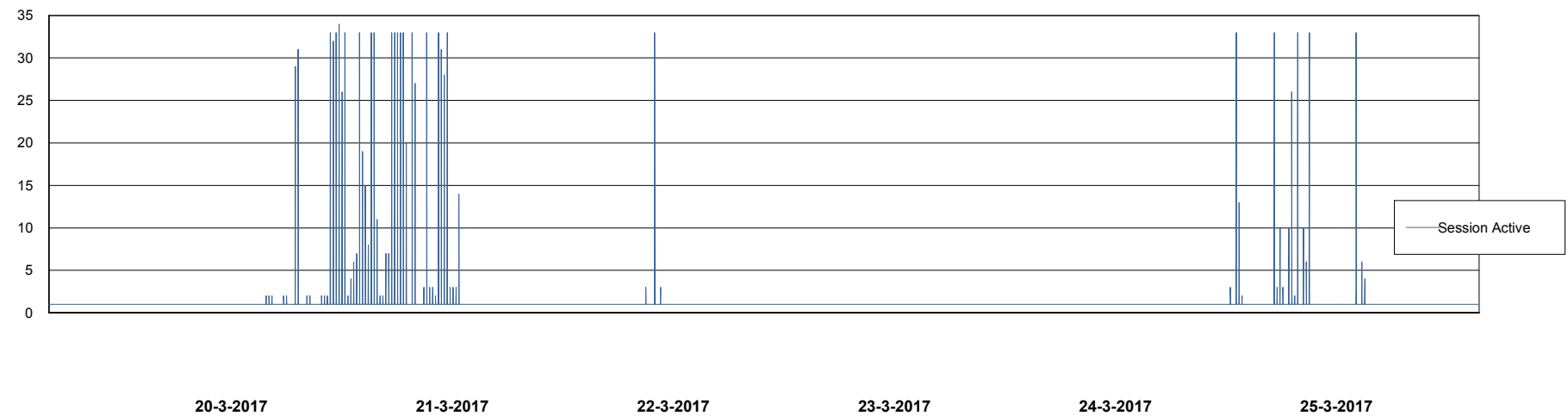
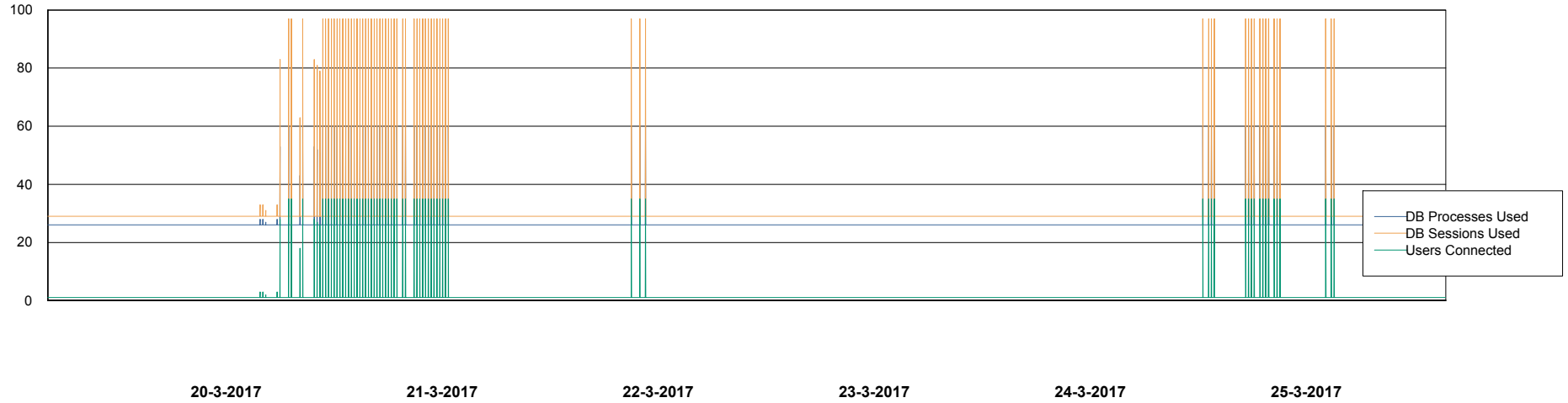
# Weekly SLA Customer Report

Customer NIX\_Production  
Database ID 51



## Database Performance NIXDB\_Standby

DB Processes Max 500  
DB Sessions Max 800



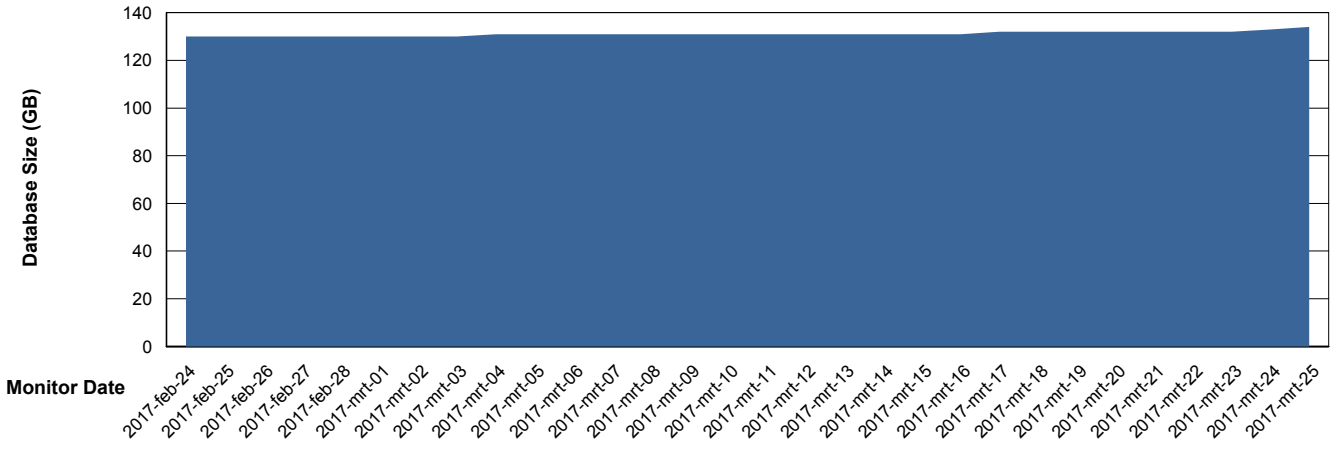
# Weekly SLA Customer Report

Customer NIX\_Production  
 Database ID 51



DATABASE SIZE NIXDB\_Production

## Database growth over last month



Database Tablespace NIXDB\_Production

Date	Tablespace Name	Filesize (Gb)	Usedsize (Gb)	Percentage free
25-3-2017	ABSDATA	59	47	20
	INDX	100	84	16
24-3-2017	ABSDATA	59	47	20
	INDX	100	84	16
23-3-2017	ABSDATA	59	47	20
	INDX	100	83	17
22-3-2017	ABSDATA	59	47	20
	INDX	100	83	17
21-3-2017	ABSDATA	59	47	20
	INDX	100	83	17
20-3-2017	ABSDATA	59	47	20
	INDX	100	83	17
19-3-2017	ABSDATA	59	47	20
	INDX	100	83	17

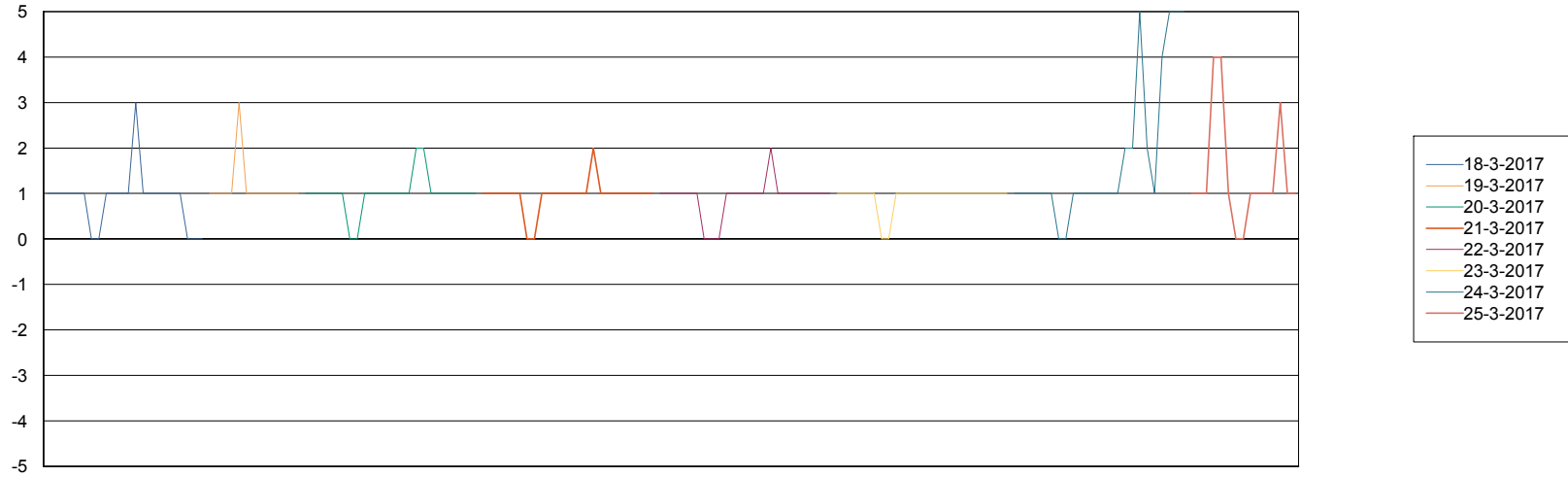
# Weekly SLA Customer Report

Customer NIX\_Production  
Database ID 51



Standby Database Health NIX\_Production

### Recovery lag for last 7 days



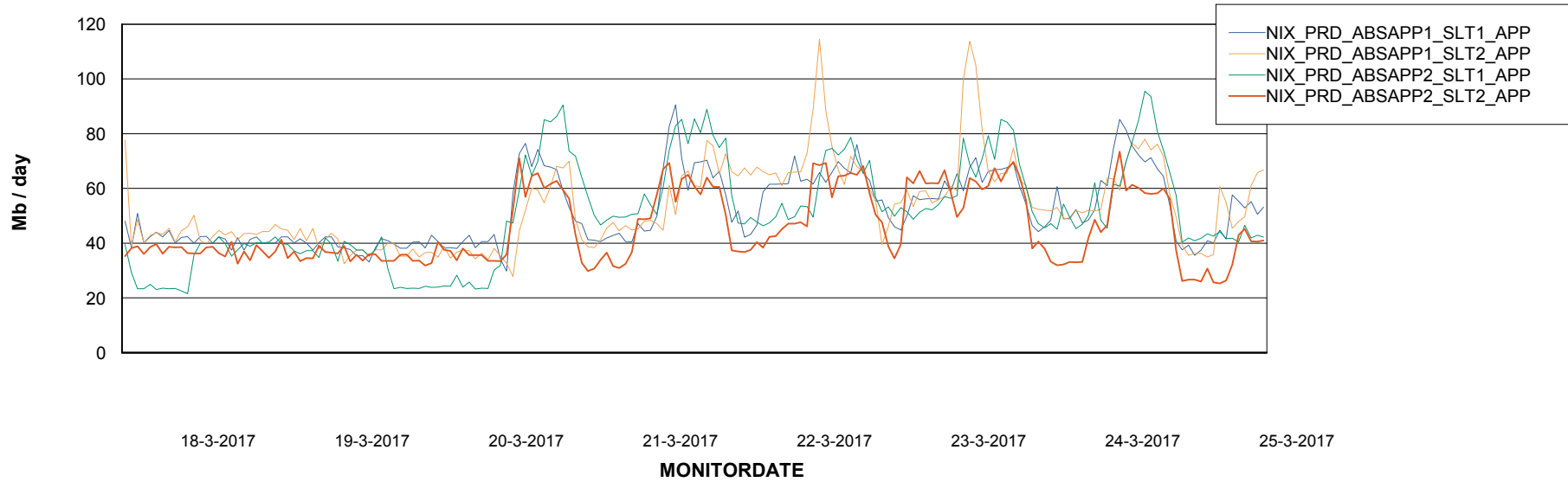
# Weekly SLA Customer Report

Customer NIX\_Production  
Database ID 51

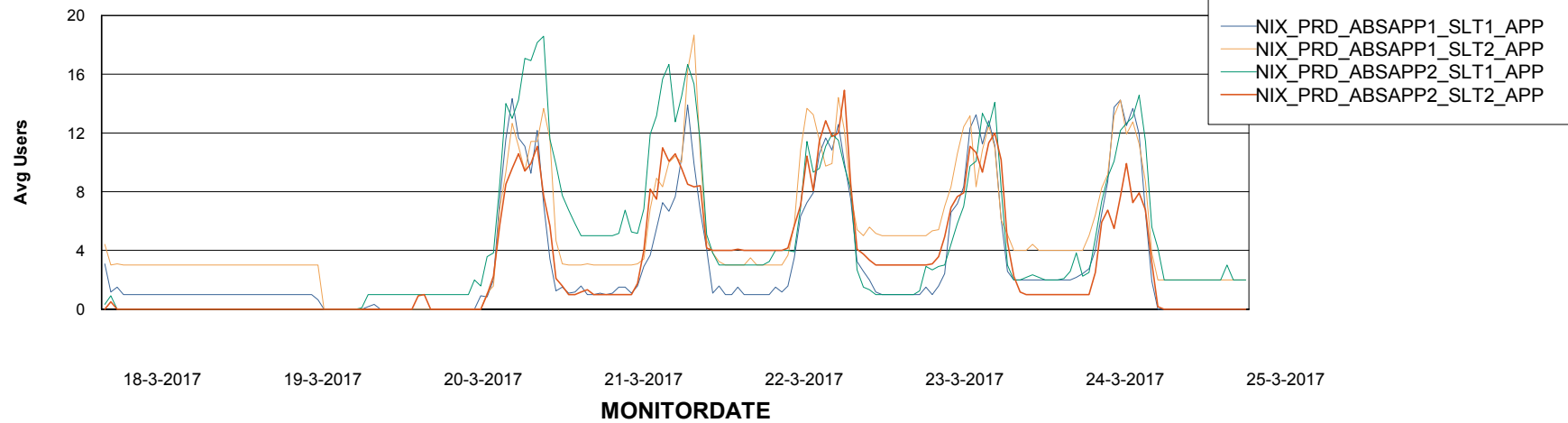


## ABSSolute Application Server Services

### Avg memory used per ABS Server Service



### Avg users per day per ABS server



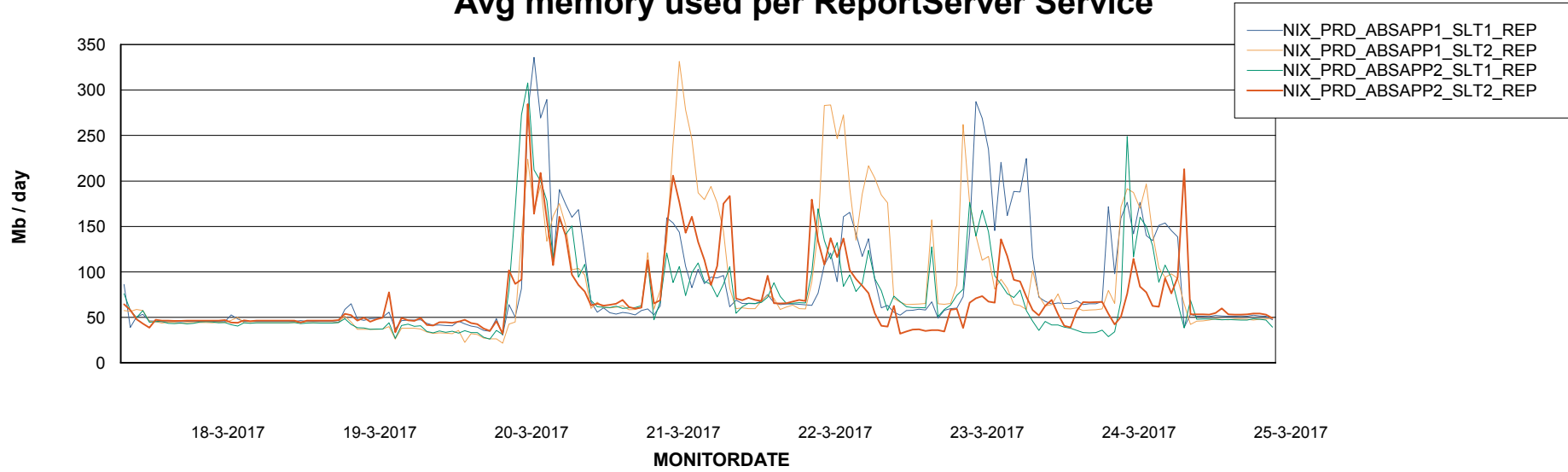
# Weekly SLA Customer Report

Customer NIX\_Production  
Database ID 51



## ABSSolute Application ReportServer Services

### Avg memory used per ReportServer Service



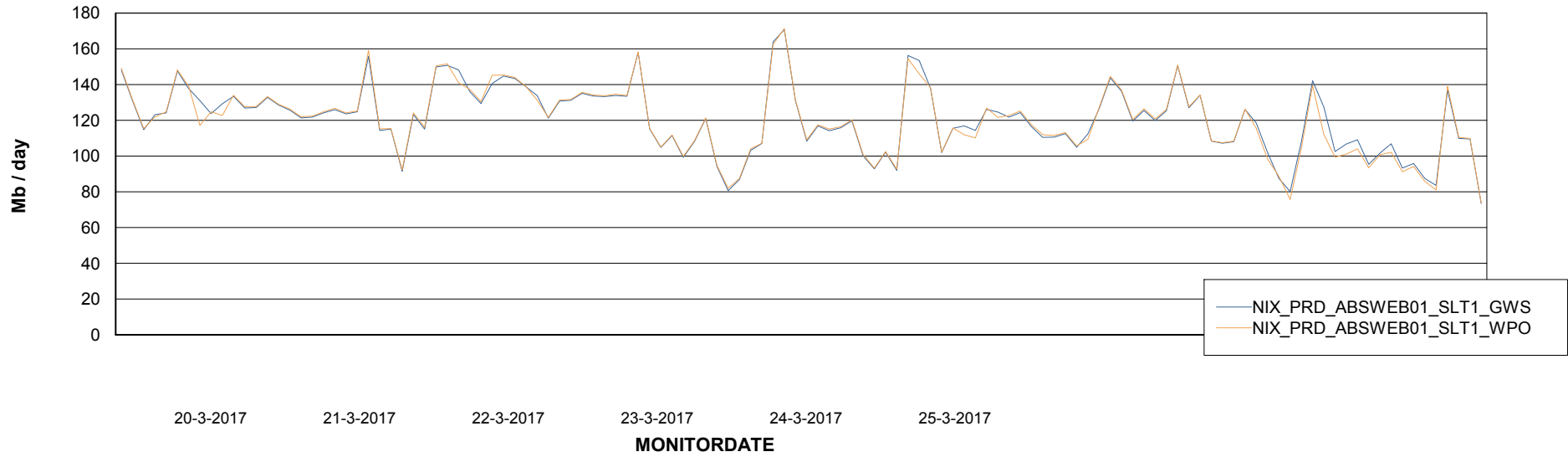
# Weekly SLA Customer Report

Customer NIX\_Production  
Database ID 51



## ABSSolute Web Component Services

### Avg memory used per ABS Web component



# Weekly SLA Customer Report

Customer NIX\_Production  
Database ID 51



## Disaster per ABS component

