

Weekly SLA Customer Report

Customer NIX_Production
Database ID 51



Harddisk Usage NIX_PRD_ABSAPP02

	Free disk space on c: (%)	Total disk space on c: (Gb)
13-3-2017	85	200
12-3-2017	85	200
11-3-2017	85	200
10-3-2017	85	200
9-3-2017	85	200
8-3-2017	85	200
7-3-2017	85	200

Harddisk Usage NIX_PRD_ABSAPP03

	Free disk space on c: (%)	Total disk space on c: (Gb)
13-3-2017	82	200
12-3-2017	82	200
11-3-2017	82	200
10-3-2017	82	200
9-3-2017	82	200
8-3-2017	82	200
7-3-2017	82	200

Weekly SLA Customer Report

Customer NIX_Production
Database ID 51



Harddisk Usage NIX_PRD_ABSWEB01

	Free disk space on c: (%)	Total disk space on c: (Gb)
13-3-2017	92	300
12-3-2017	92	300
11-3-2017	92	300
10-3-2017	92	300
9-3-2017	92	300
8-3-2017	92	300
7-3-2017	92	300

Harddisk Usage NIX_PRD_ORACLE_B11

	Free disk space on c: (%)	Total disk space on c: (Gb)	Free disk space on e: (%)	Total disk space on e: (Gb)	Free disk space on f: (%)	Total disk space on f: (Gb)	Free disk space on g: (%)	Total disk space on g: (Gb)
13-3-2017	37	279	51	558	47	279	65	558
12-3-2017	37	279	51	558	47	279	66	558
11-3-2017	38	279	51	558	47	279	65	558
10-3-2017	38	279	51	558	47	279	62	558
9-3-2017	42	279	51	558	47	279	63	558
8-3-2017	46	279	51	558	47	279	63	558
7-3-2017	38	279	51	558	47	279	64	558

Weekly SLA Customer Report

Customer NIX_Production
Database ID 51



Harddisk Usage NIX_PRD_ORCDB1

	Free disk space on c: (%)	Total disk space on c: (Gb)	Free disk space on e: (%)	Total disk space on e: (Gb)	Free disk space on f: (%)	Total disk space on f: (Gb)	Free disk space on g: (%)	Total disk space on g: (Gb)
13-3-2017	55	279	81	558	82	558	63	279
12-3-2017	54	279	81	558	82	558	62	279
11-3-2017	41	279	81	558	82	558	62	279
10-3-2017	41	279	81	558	82	558	62	279
9-3-2017	41	279	81	558	82	558	62	279
8-3-2017	41	279	81	558	82	558	62	279
7-3-2017	41	279	81	558	82	558	63	279

Harddisk Usage NIX_PRD_ORCDB2

	Free disk space on c: (%)	Total disk space on c: (Gb)	Free disk space on e: (%)	Total disk space on e: (Gb)	Free disk space on f: (%)	Total disk space on f: (Gb)	Free disk space on g: (%)	Total disk space on g: (Gb)
13-3-2017	55	279	81	558	82	558	63	279
12-3-2017	54	279	81	558	82	558	62	279
11-3-2017	41	279	81	558	82	558	62	279
10-3-2017	41	279	81	558	82	558	62	279
9-3-2017	41	279	81	558	82	558	62	279
8-3-2017	41	279	81	558	82	558	62	279
7-3-2017	41	279	81	558	82	558	63	279

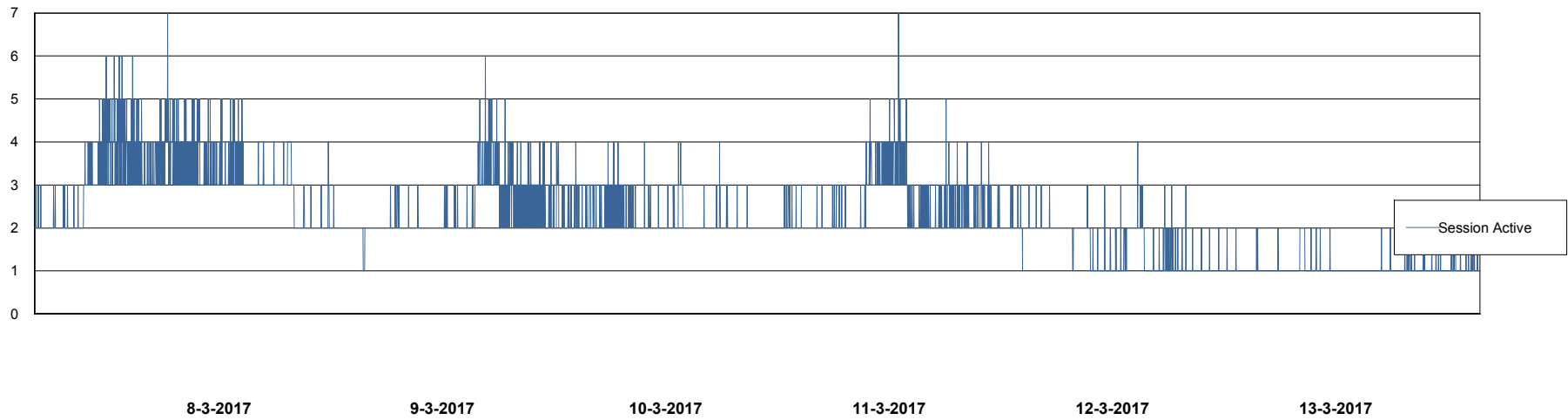
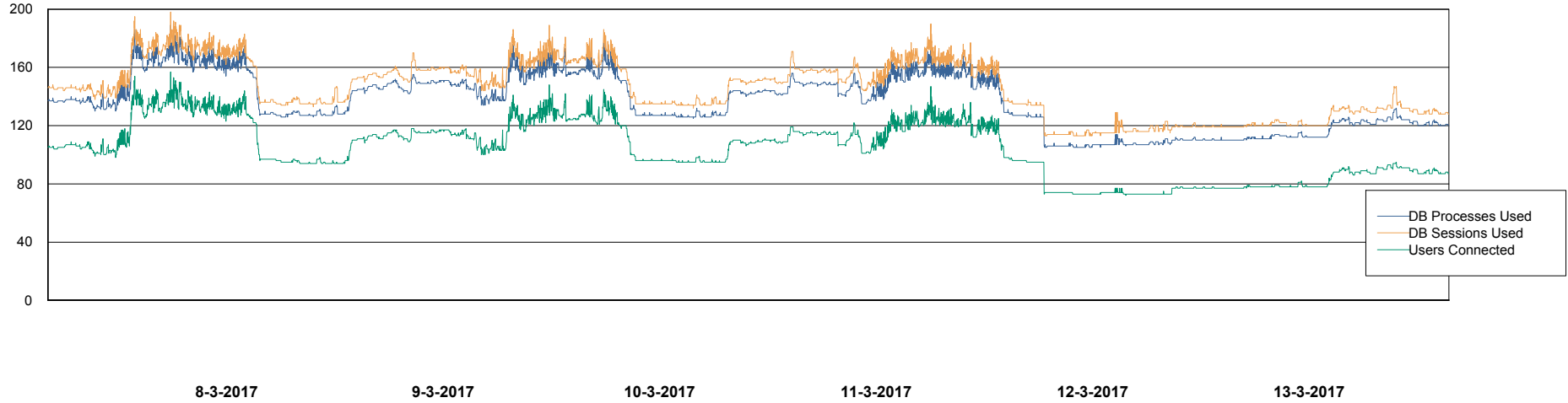
Weekly SLA Customer Report

Customer NIX_Production
Database ID 51



Database Performance NIXDB_Production

DB Processes Max 500
DB Sessions Max 800



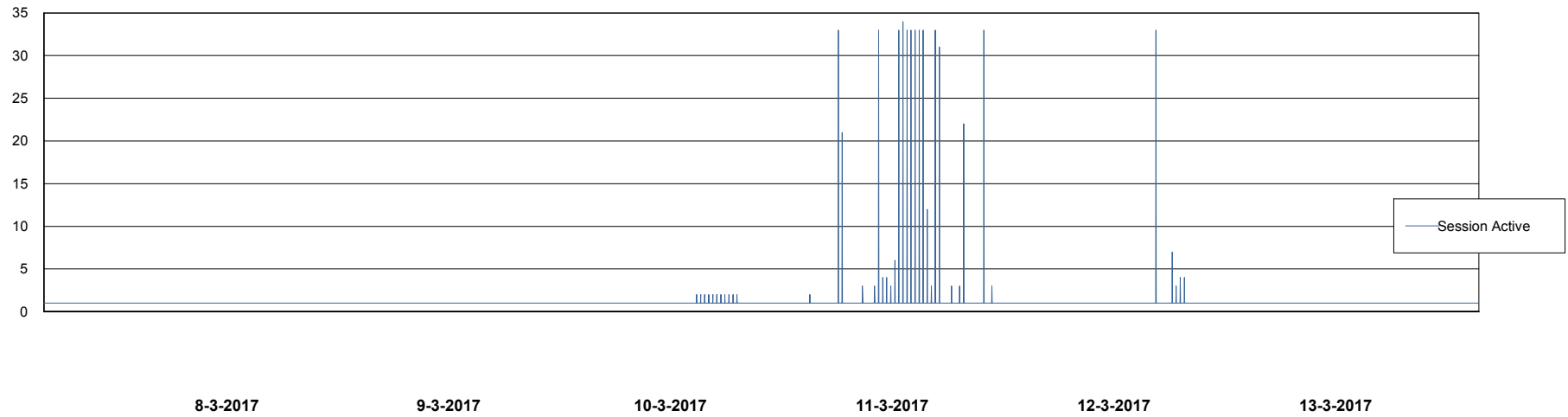
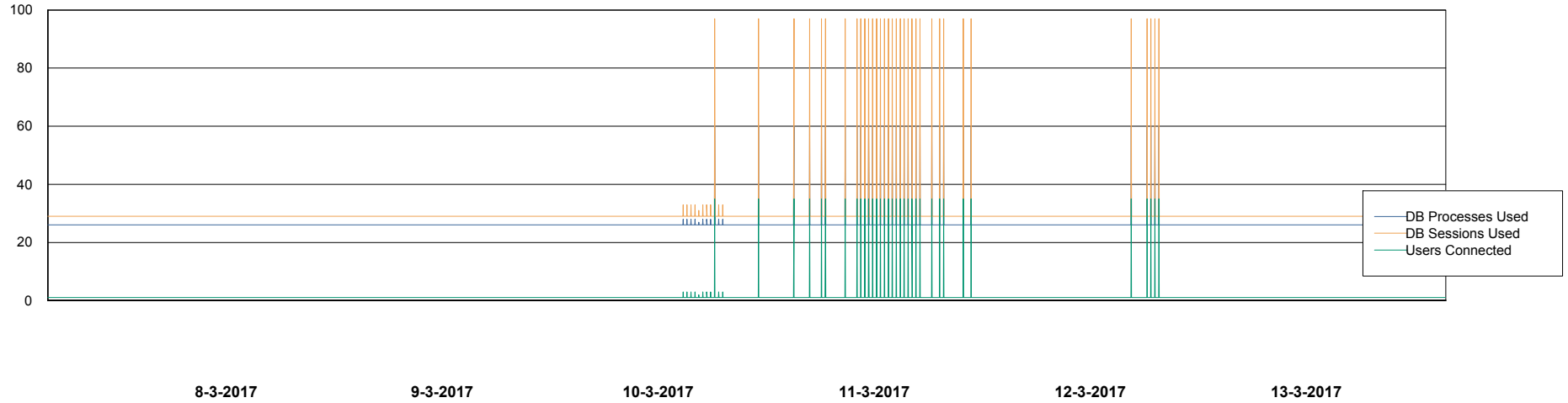
Weekly SLA Customer Report

Customer NIX_Production
Database ID 51



Database Performance NIXDB_Standby

DB Processes Max 500
DB Sessions Max 800



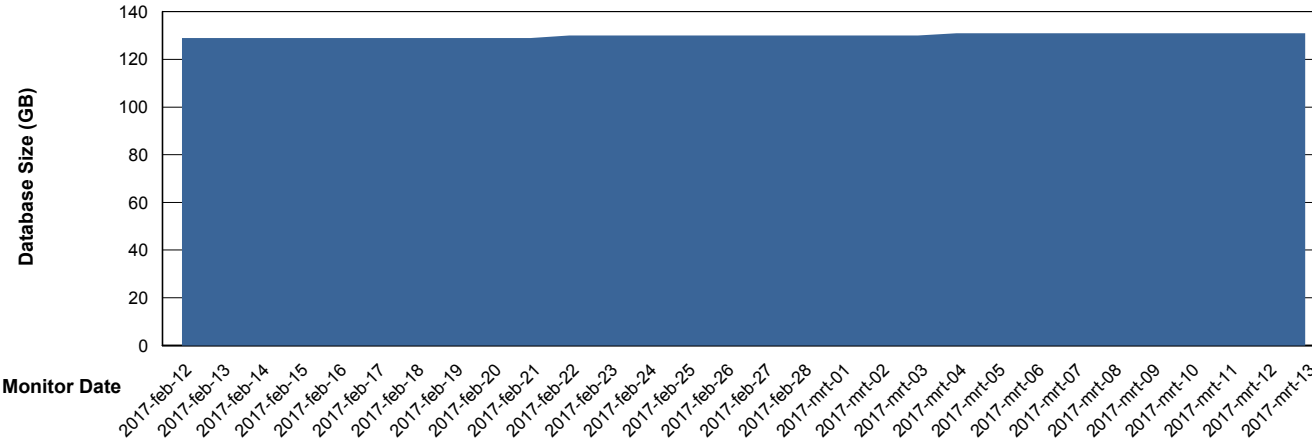
Weekly SLA Customer Report

Customer NIX_Production
 Database ID 51



DATABASE SIZE NIXDB_Production

Database growth over last month



Database Tablespace NIXDB_Production

Date	Tablespace Name	Filesize (Gb)	Usedsize (Gb)	Percentage free
13-3-2017	ABSDATA	59	47	20
	INDX	100	83	17
12-3-2017	ABSDATA	59	47	20
	INDX	100	83	17
11-3-2017	ABSDATA	59	47	20
	INDX	100	83	17
10-3-2017	ABSDATA	59	47	20
	INDX	100	83	17
9-3-2017	ABSDATA	59	47	20
	INDX	100	83	17
8-3-2017	ABSDATA	59	47	20
	INDX	100	82	18
7-3-2017	ABSDATA	59	47	20
	INDX	100	82	18

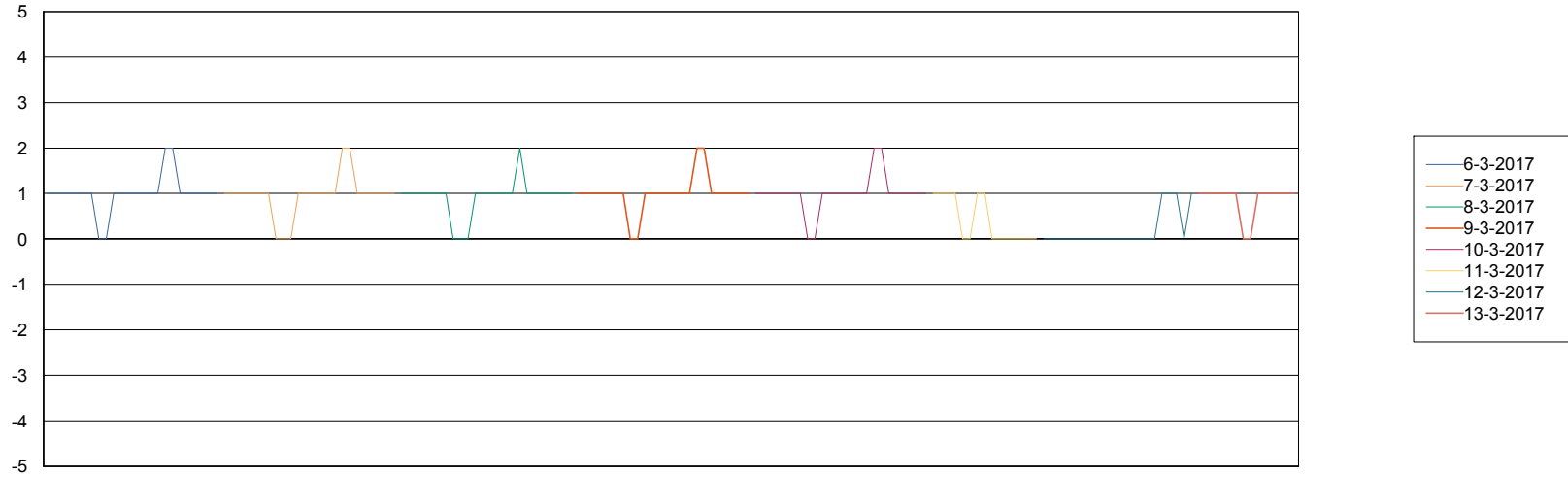
Weekly SLA Customer Report

Customer NIX_Production
Database ID 51



Standby Database Health NIX_Production

Recovery lag for last 7 days



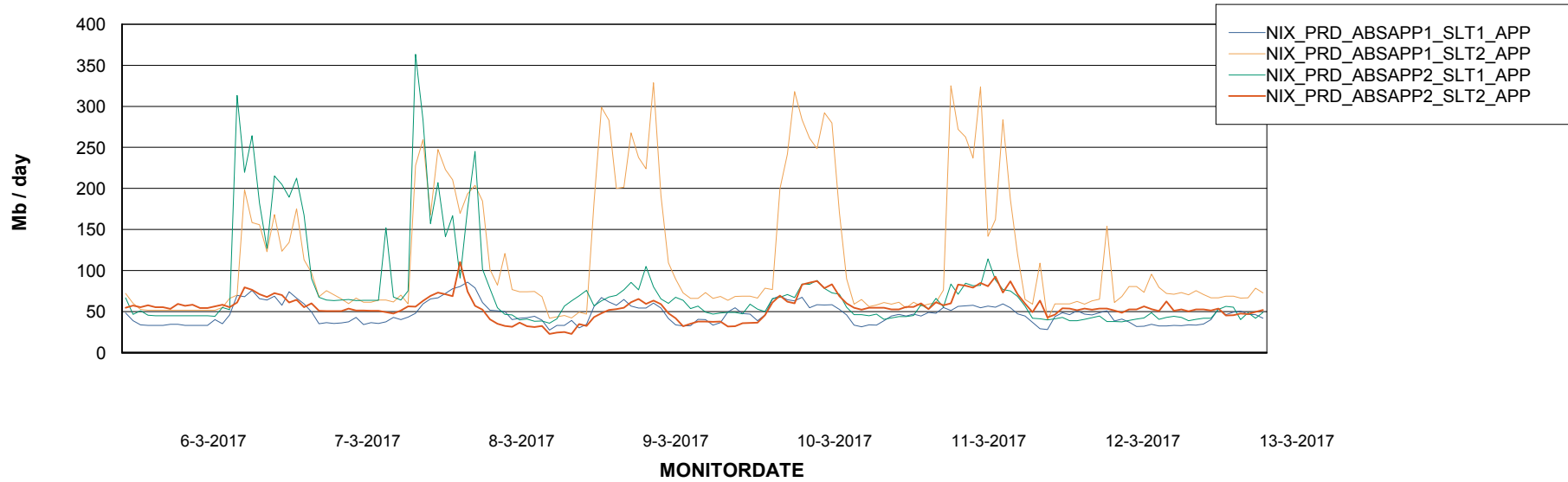
Weekly SLA Customer Report

Customer NIX_Production
Database ID 51

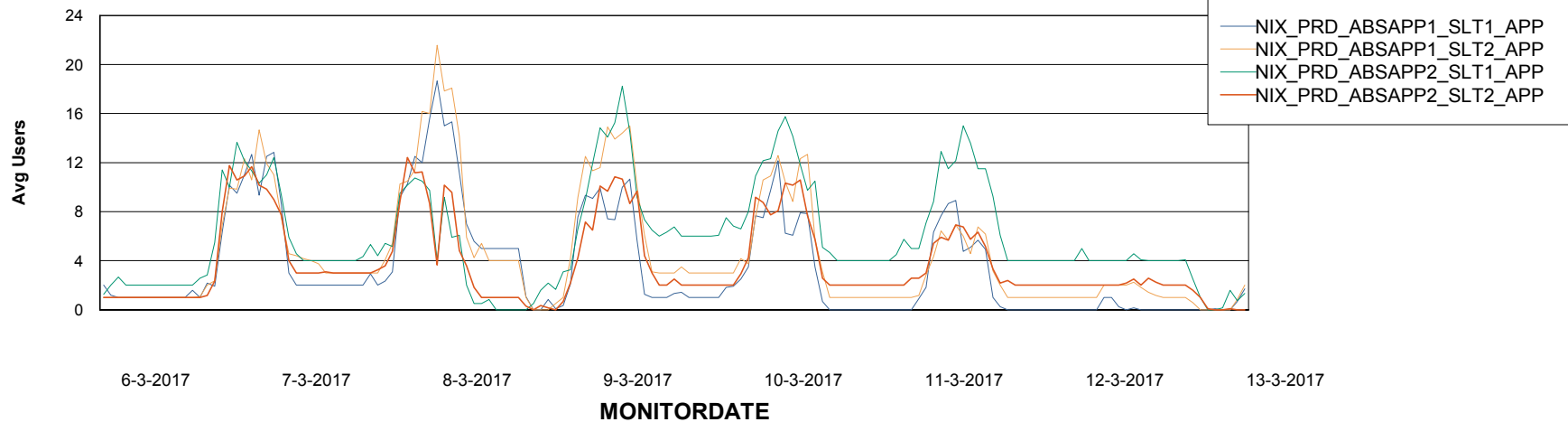


ABSolute Application Server Services

Avg memory used per ABS Server Service



Avg users per day per ABS server



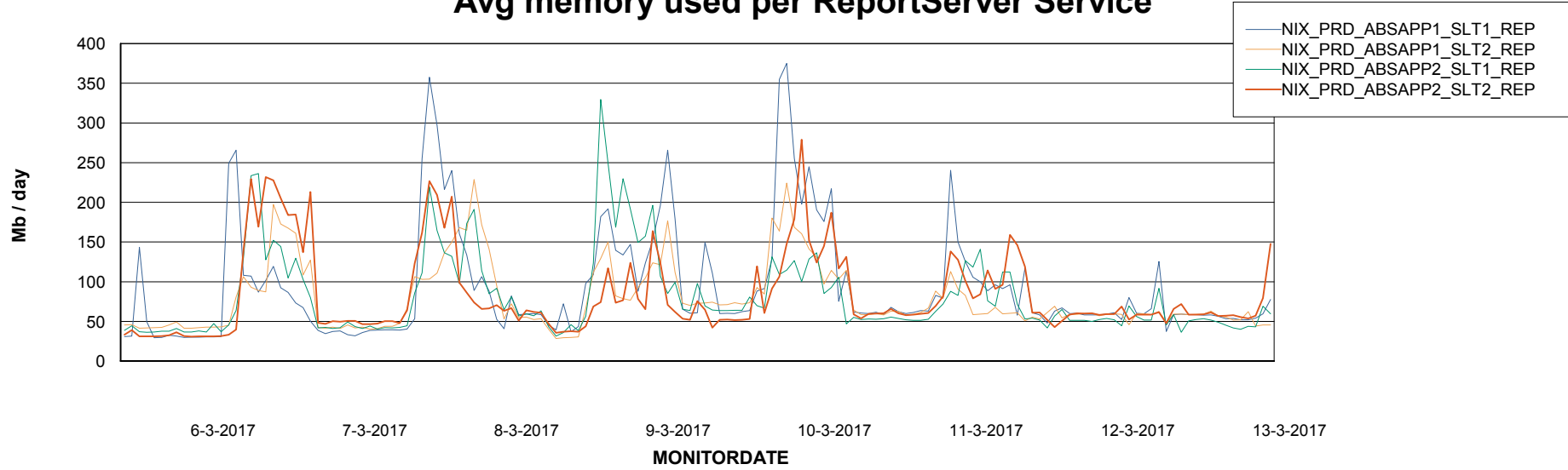
Weekly SLA Customer Report

Customer NIX_Production
Database ID 51



ABSSolute Application ReportServer Services

Avg memory used per ReportServer Service



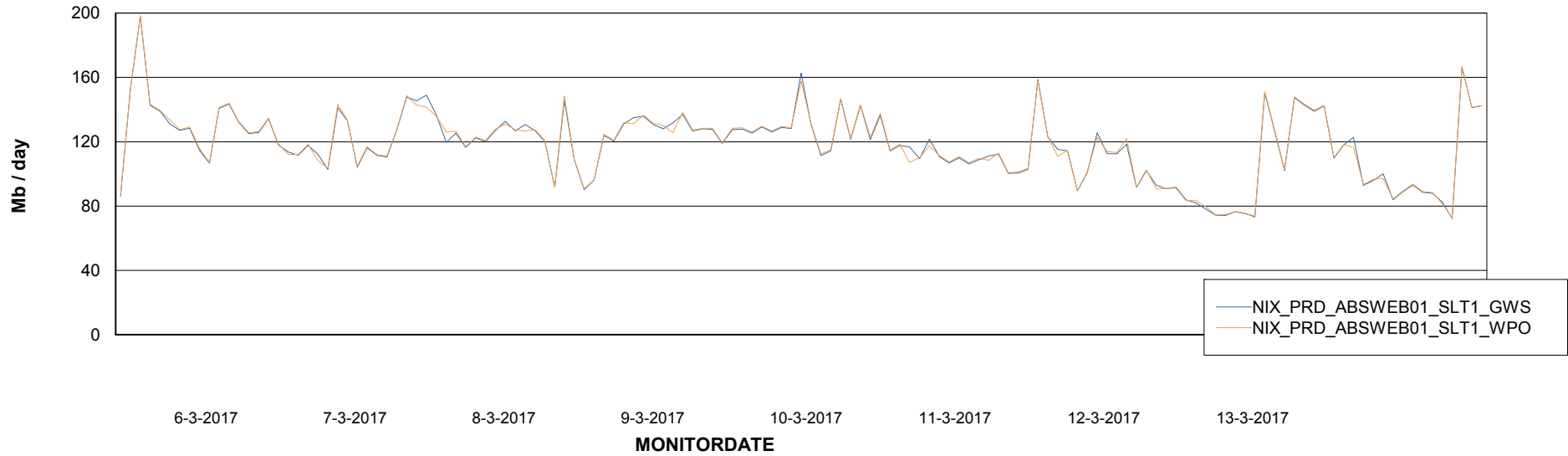
Weekly SLA Customer Report

Customer NIX_Production
Database ID 51



ABSolute Web Component Services

Avg memory used per ABS Web component



Weekly SLA Customer Report

Customer NIX_Production
Database ID 51



Disaster per ABS component

