

Weekly SLA Customer Report

Customer NIX_Production
Database ID 51



Harddisk Usage NIX_PRD_ABSAPP02

	Free disk space on c: (%)	Total disk space on c: (Gb)
11-2-2017	85	200
10-2-2017	85	200
9-2-2017	85	200
8-2-2017	85	200
7-2-2017	85	200
6-2-2017	85	200
5-2-2017	85	200

Harddisk Usage NIX_PRD_ABSAPP03

	Free disk space on c: (%)	Total disk space on c: (Gb)
11-2-2017	83	200
10-2-2017	83	200
9-2-2017	83	200
8-2-2017	83	200
7-2-2017	83	200
6-2-2017	83	200
5-2-2017	83	200

Weekly SLA Customer Report

Customer NIX_Production
Database ID 51



Harddisk Usage NIX_PRD_ABSWEB01

	Free disk space on c: (%)	Total disk space on c: (Gb)
11-2-2017	93	300
10-2-2017	93	300
9-2-2017	93	300
8-2-2017	93	300
7-2-2017	93	300
6-2-2017	93	300
5-2-2017	93	300

Harddisk Usage NIX_PRD_ORACLE_B11

	Free disk space on c: (%)	Total disk space on c: (Gb)	Free disk space on e: (%)	Total disk space on e: (Gb)	Free disk space on f: (%)	Total disk space on f: (Gb)	Free disk space on g: (%)
11-2-2017	41	279	54	558	47	279	64
10-2-2017	40	279	54	558	47	279	61
9-2-2017	40	279	54	558	47	279	62
8-2-2017	40	279	54	558	47	279	63
7-2-2017	37	279	53	558	47	279	64
6-2-2017	36	279	53	558	47	279	65
5-2-2017	37	279	54	558	47	279	66

Weekly SLA Customer Report

Customer NIX_Production
Database ID 51



Harddisk Usage NIX_PRD_ORCDB1

	Free disk space on c: (%)	Total disk space on c: (Gb)	Free disk space on e: (%)	Total disk space on e: (Gb)	Free disk space on f: (%)	Total disk space on f: (Gb)	Free disk space on g: (%)
11-2-2017	43	279	82	558	82	558	62
10-2-2017	43	279	82	558	82	558	62
9-2-2017	43	279	82	558	82	558	62
8-2-2017	43	279	82	558	82	558	62
7-2-2017	43	279	82	558	82	558	63
6-2-2017	43	279	82	558	82	558	63
5-2-2017	43	279	82	558	82	558	63

Harddisk Usage NIX_PRD_ORCDB2

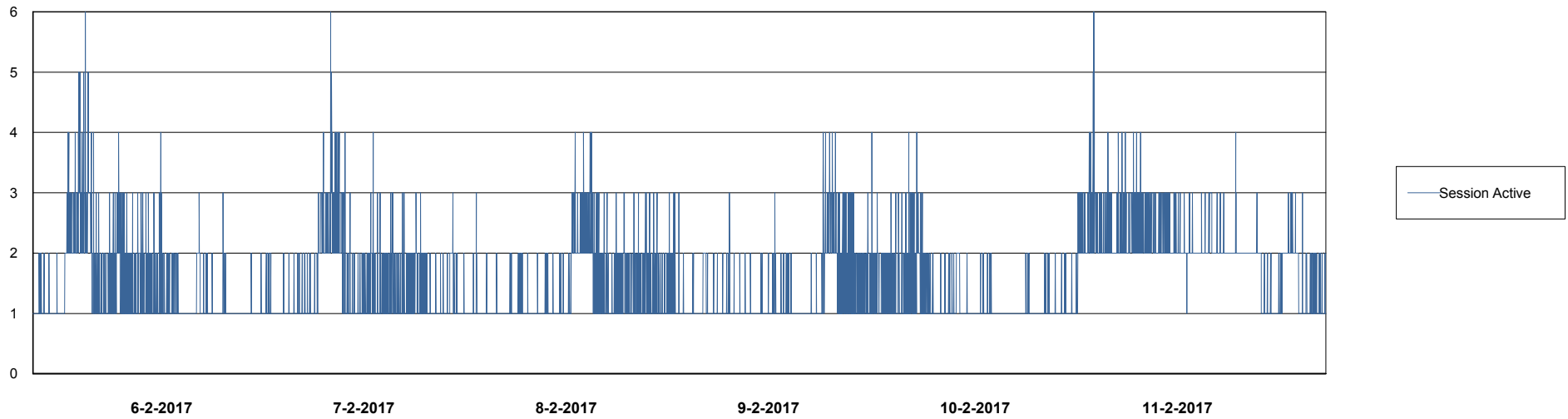
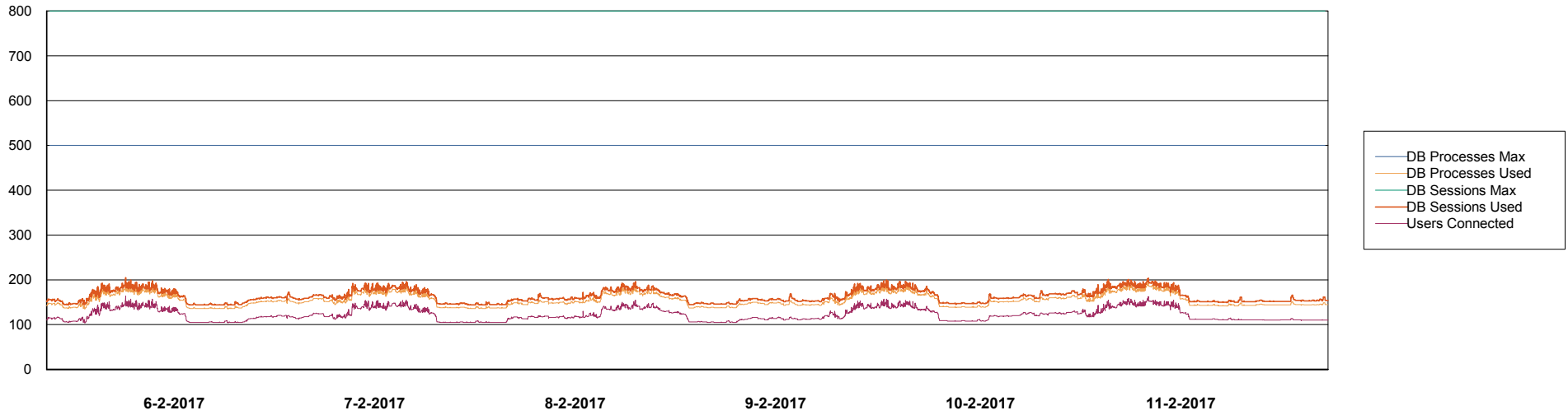
	Free disk space on c: (%)	Total disk space on c: (Gb)	Free disk space on e: (%)	Total disk space on e: (Gb)	Free disk space on f: (%)	Total disk space on f: (Gb)	Free disk space on g: (%)
11-2-2017	43	279	82	558	82	558	62
10-2-2017	43	279	82	558	82	558	62
9-2-2017	43	279	82	558	82	558	62
8-2-2017	43	279	82	558	82	558	62
7-2-2017	43	279	82	558	82	558	63
6-2-2017	43	279	82	558	82	558	63
5-2-2017	43	279	82	558	82	558	63

Weekly SLA Customer Report

Customer NIX_Production
Database ID 51



Database Performance NIXDB_Production

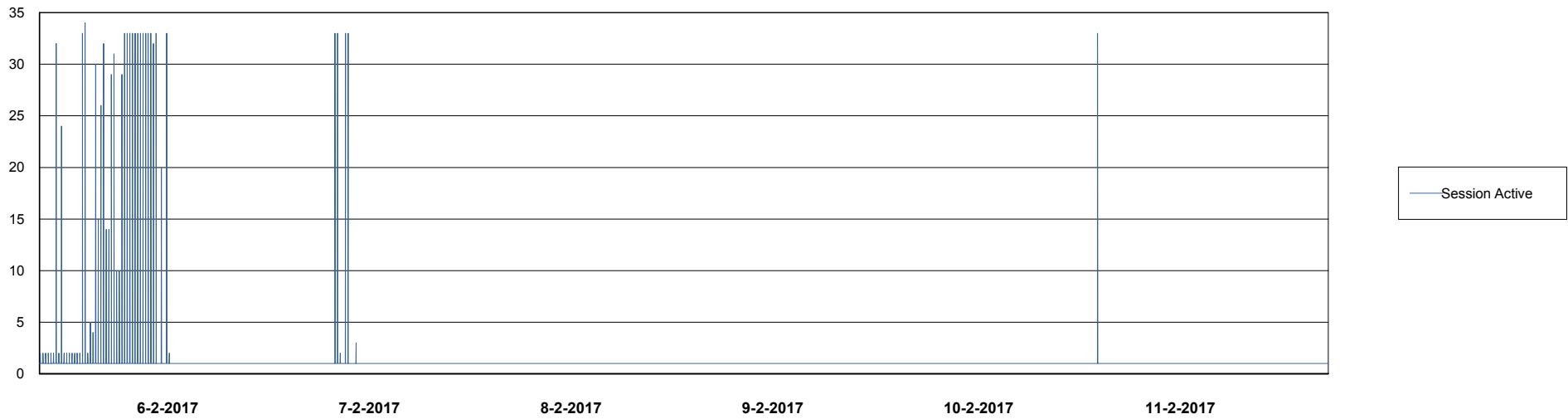
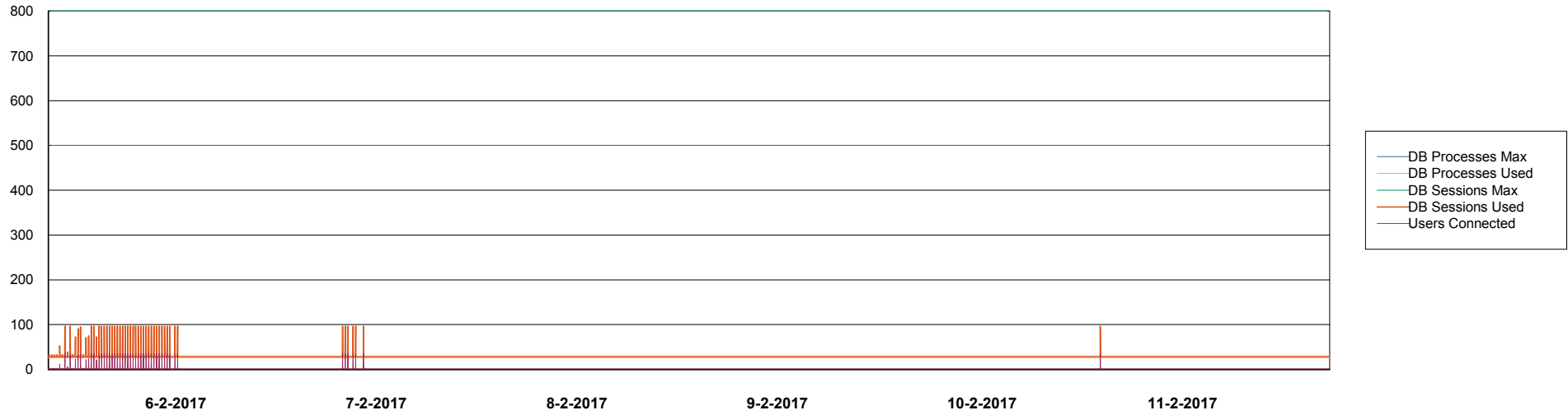


Weekly SLA Customer Report

Customer NIX_Production
Database ID 51



Database Performance NIXDB_Standby



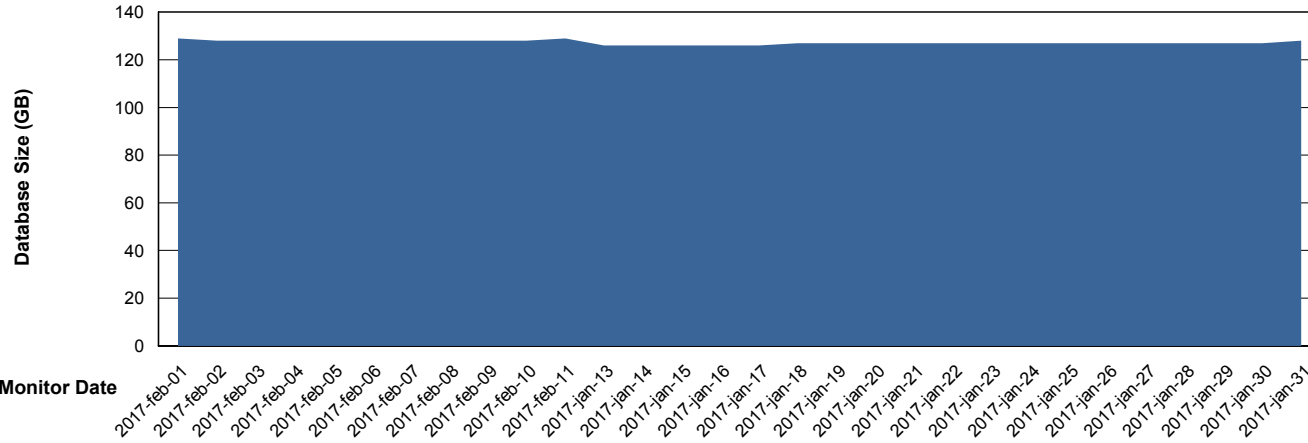
Weekly SLA Customer Report

Customer NIX_Production
 Database ID 51



DATABASE SIZE NIXDB_Production

Database growth over last month



Database Tablespace NIXDB_Production

Date	Tablespace Name	Filesize (Gb)	Usedsize (Gb)	Percentage free
11-2-2017	ABSDATA	54	46	15
	INDX	100	81	19
10-2-2017	ABSDATA	54	46	15
	INDX	100	81	19
9-2-2017	ABSDATA	54	46	15
	INDX	100	81	19
8-2-2017	ABSDATA	54	46	15
	INDX	100	81	19
7-2-2017	ABSDATA	54	46	15
	INDX	100	81	19
6-2-2017	ABSDATA	54	46	15
	INDX	100	80	20
5-2-2017	ABSDATA	54	46	15
	INDX	100	80	20

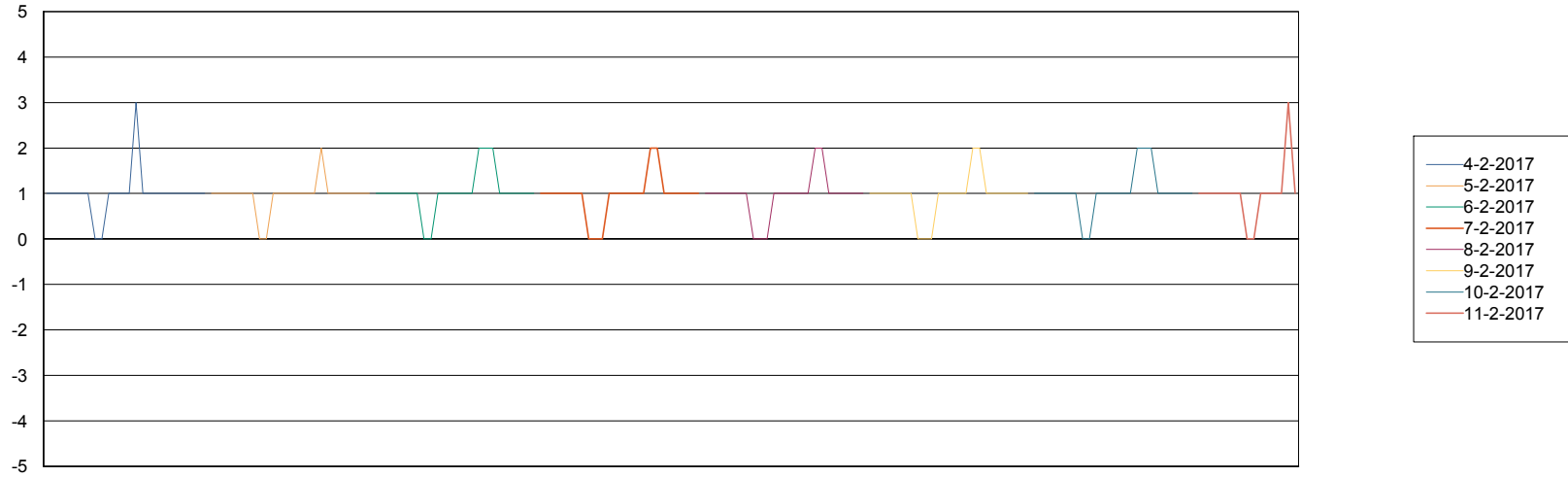
Weekly SLA Customer Report

Customer NIX_Production
Database ID 51



Standby Database Health NIX_Production

Recovery lag for last 7 days



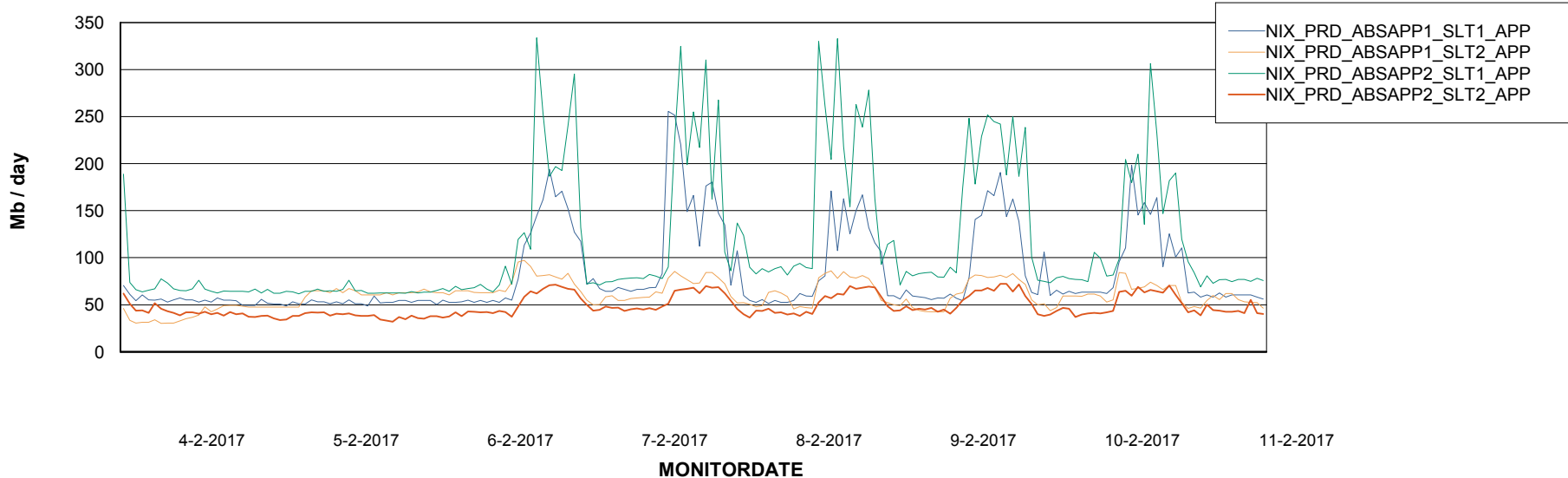
Weekly SLA Customer Report

Customer NIX_Production
Database ID 51

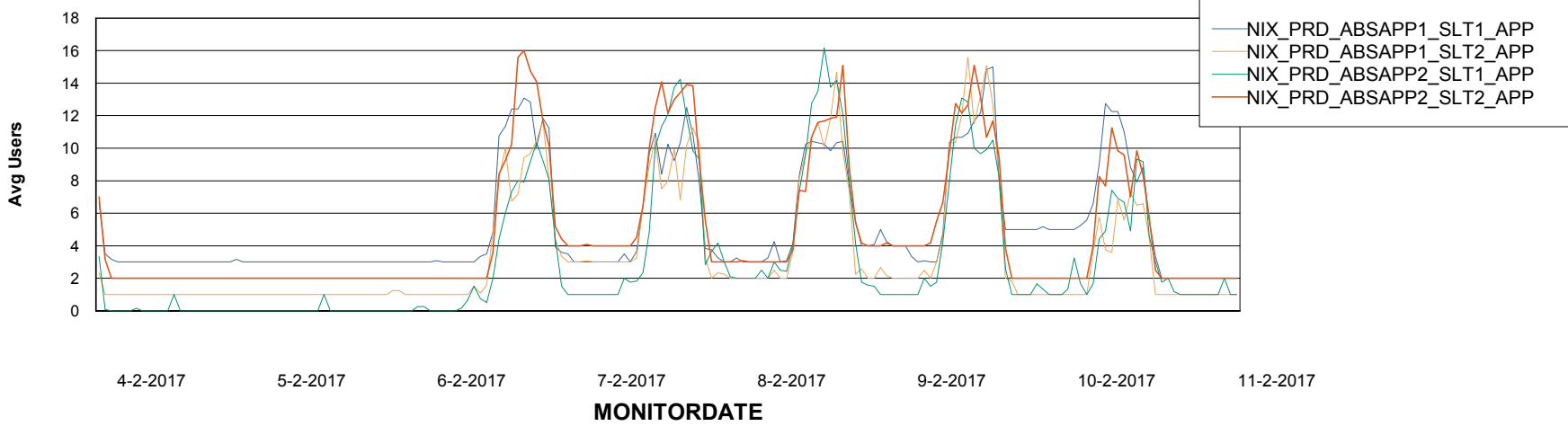


ABSolute Application Server Services

Avg memory used per ABS Server Service



Avg users per day per ABS server



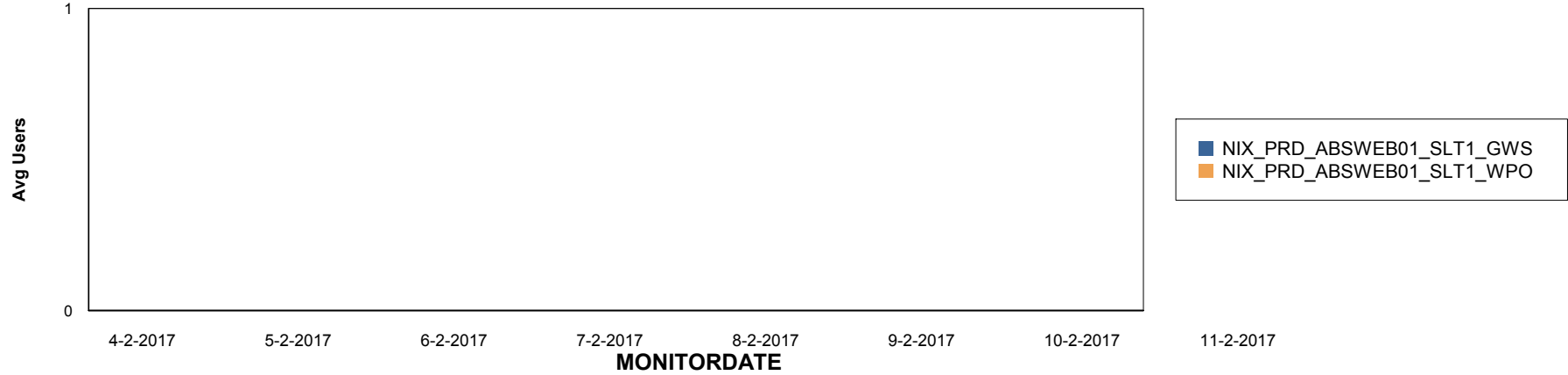
Weekly SLA Customer Report

Customer NIX_Production
Database ID 51

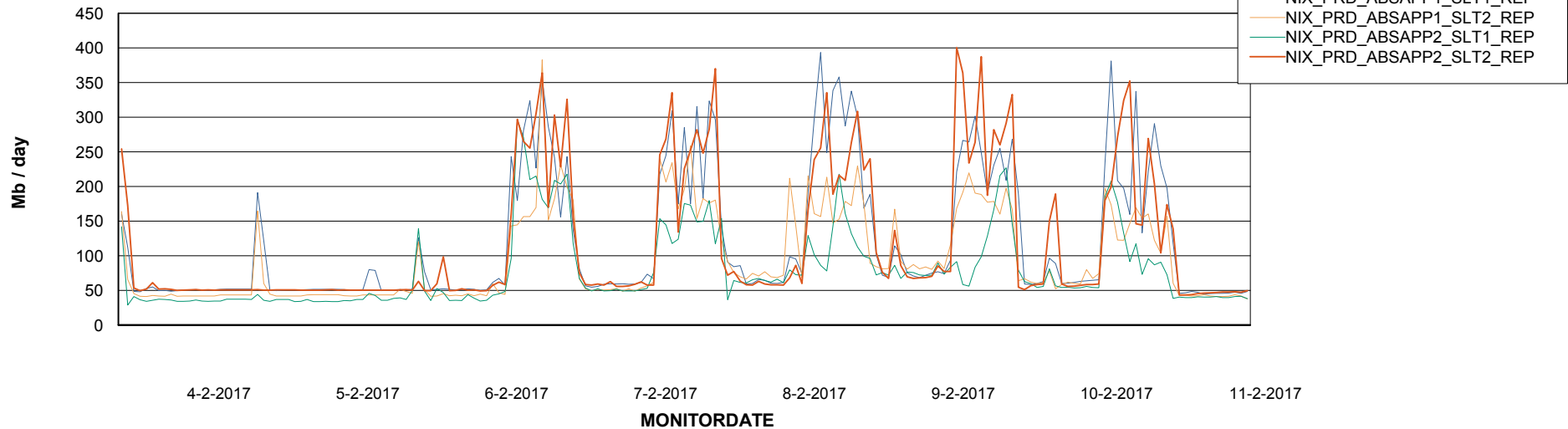


ABSSolute Application ReportServer Services

Disaster per ReportServer



Avg memory used per ReportServer Service



Weekly SLA Customer Report

Customer NIX_Production
Database ID 51



Disaster per ABS component

