

Weekly SLA Customer Report

Customer NIX_Production
 Database ID 51



=====
 HARDDISK USAGE NIX_PRD_ABSAPP02
 =====

	Total disk space on C (GB)	Free disk space on C (GB)
21-1-2017	200	171
20-1-2017	200	171
19-1-2017	200	171
18-1-2017	200	171
17-1-2017	200	171
16-1-2017	200	171

=====
 HARDDISK USAGE NIX_PRD_ABSAPP03
 =====

	Total disk space on C (GB)	Free disk space on C (GB)
21-1-2017	200	167
20-1-2017	200	167
19-1-2017	200	167
18-1-2017	200	167
17-1-2017	200	167
16-1-2017	200	25
15-1-2017	200	12

=====
 HARDDISK USAGE NIX_PRD_ABSWEB01
 =====

Weekly SLA Customer Report

Customer NIX_Production
 Database ID 51



	Total disk space on C (GB)	Free disk space on C (GB)
21-1-2017	300	273
20-1-2017	300	274
19-1-2017	300	274
18-1-2017	300	274
17-1-2017	300	274
16-1-2017	300	274
15-1-2017	300	274

=====
 HARDDISK USAGE NIX_PRD_ORACLE_BI1
 =====

	Total disk space on C (GB)	Free disk space on C (GB)	Total disk space on E (GB)	Free disk space on E (GB)	Total disk space on F (GB)	Free disk space on F (GB)	Total disk space on G (GB)	Free disk space on G (GB)
21-1-2017	279	102	558	301	279	131	558	360
20-1-2017	279	102	558	300	279	131	558	345
19-1-2017	279	102	558	299	279	131	558	350
18-1-2017	279	102	558	300	279	131	558	354
17-1-2017	279	102	558	301	279	131	558	360
16-1-2017	279	105	558	301	279	131	558	365
15-1-2017	279	106	558	302	279	131	558	369

=====
 HARDDISK USAGE NIX_PRD_ORCDB1
 =====

Weekly SLA Customer Report

Customer NIX_Production
 Database ID 51



	Total disk space on C (GB)	Free disk space on C (GB)	Total disk space on E (GB)	Free disk space on E (GB)	Total disk space on F (GB)	Free disk space on F (GB)	Total disk space on G (GB)	Free disk space on G (GB)
21-1-2017	279	160	558	455	558	457	279	178
20-1-2017	279	160	558	455	558	457	279	177
19-1-2017	279	160	558	455	558	457	279	177
18-1-2017	279	160	558	455	558	457	279	177
17-1-2017	279	160	558	455	558	457	279	179
16-1-2017	279	160	558	455	558	457	279	179
15-1-2017	279	160	558	455	558	457	279	178

=====

HARDDISK USAGE NIX_PRD_ORCDB2

=====

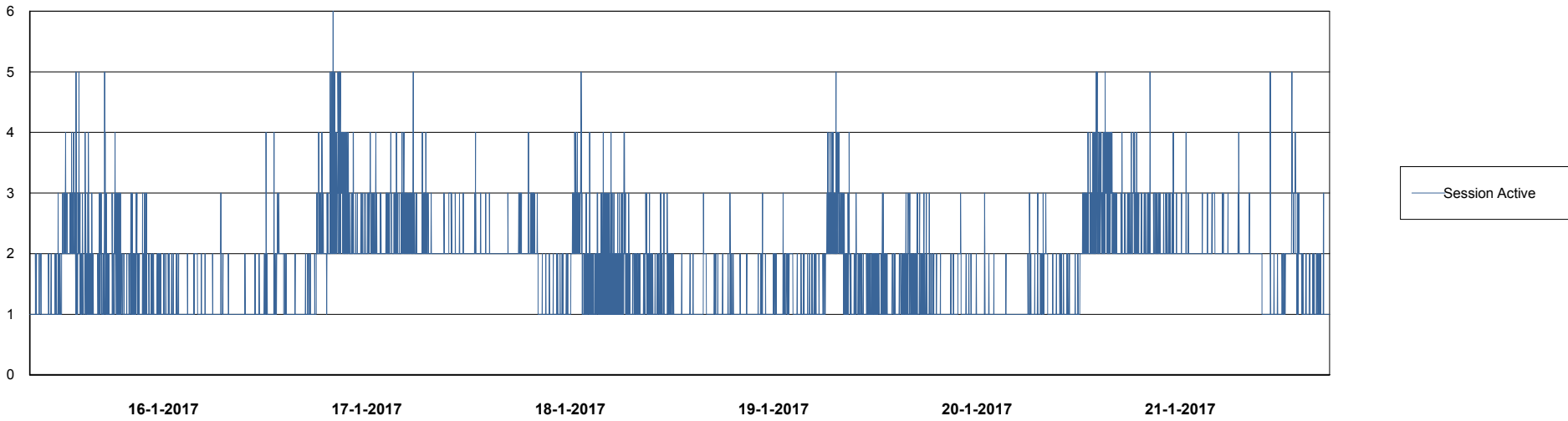
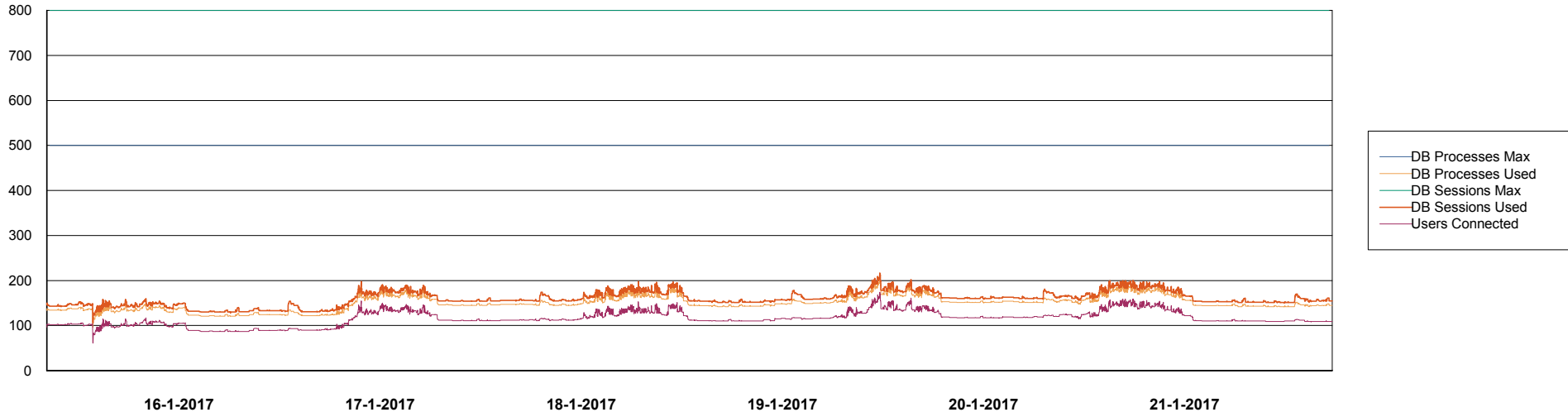
	Total disk space on C (GB)	Free disk space on C (GB)	Total disk space on E (GB)	Free disk space on E (GB)	Total disk space on F (GB)	Free disk space on F (GB)	Total disk space on G (GB)	Free disk space on G (GB)
21-1-2017	279	160	558	455	558	457	279	178
20-1-2017	279	160	558	455	558	457	279	177
19-1-2017	279	160	558	455	558	457	279	177
18-1-2017	279	160	558	455	558	457	279	177
17-1-2017	279	160	558	455	558	457	279	179
16-1-2017	279	160	558	455	558	457	279	179
15-1-2017	279	160	558	455	558	457	279	178

Weekly SLA Customer Report

Customer NIX_Production
Database ID 51



DATABASE PERFORMANCE NIXDB_Production

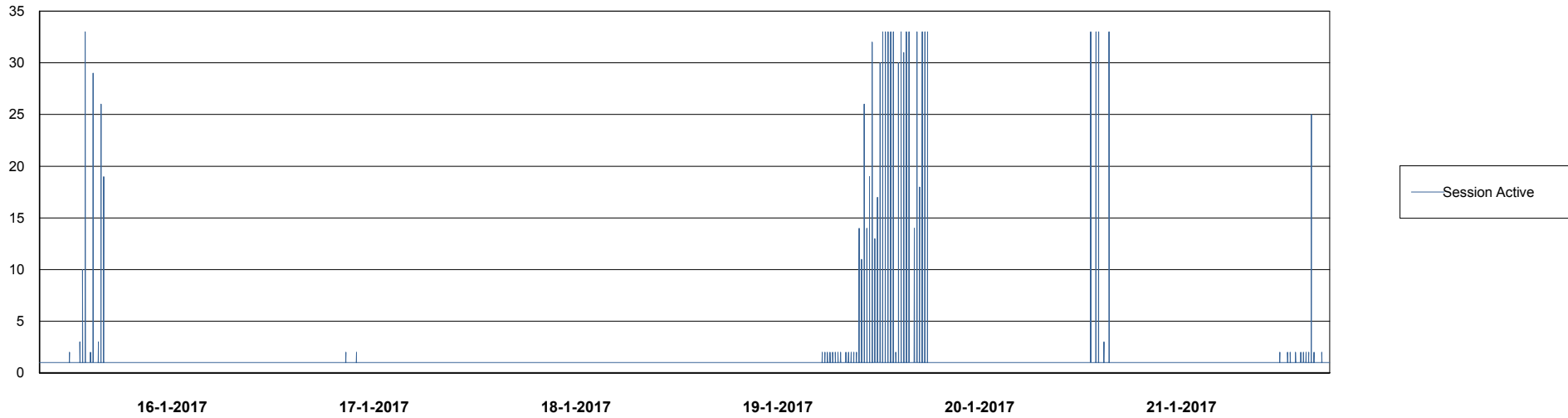
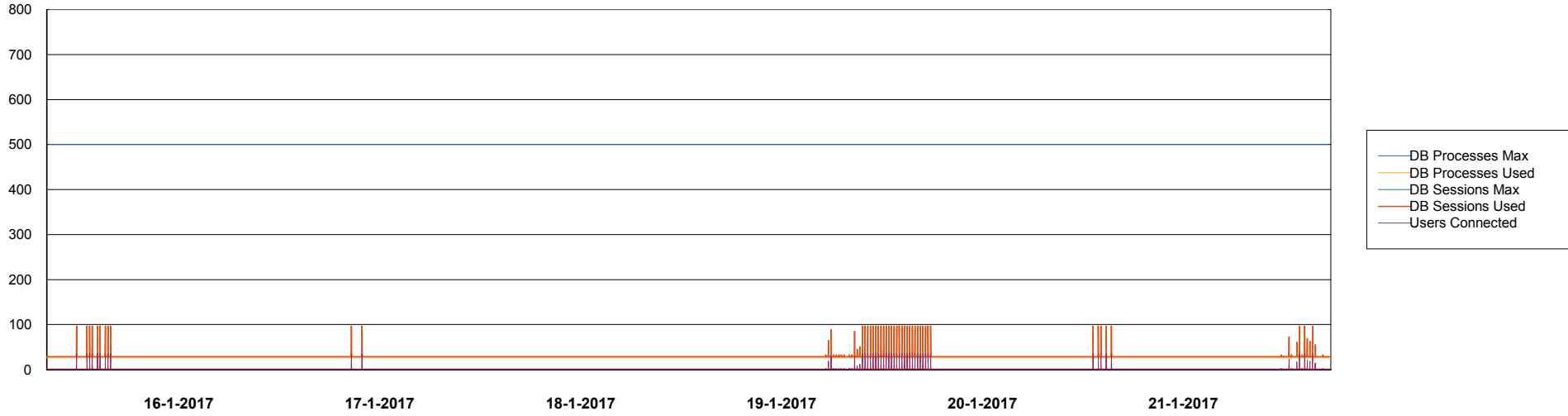


Weekly SLA Customer Report

Customer NIX_Production
Database ID 51



=====
DATABASE PERFORMANCE NIXDB_Standby
=====



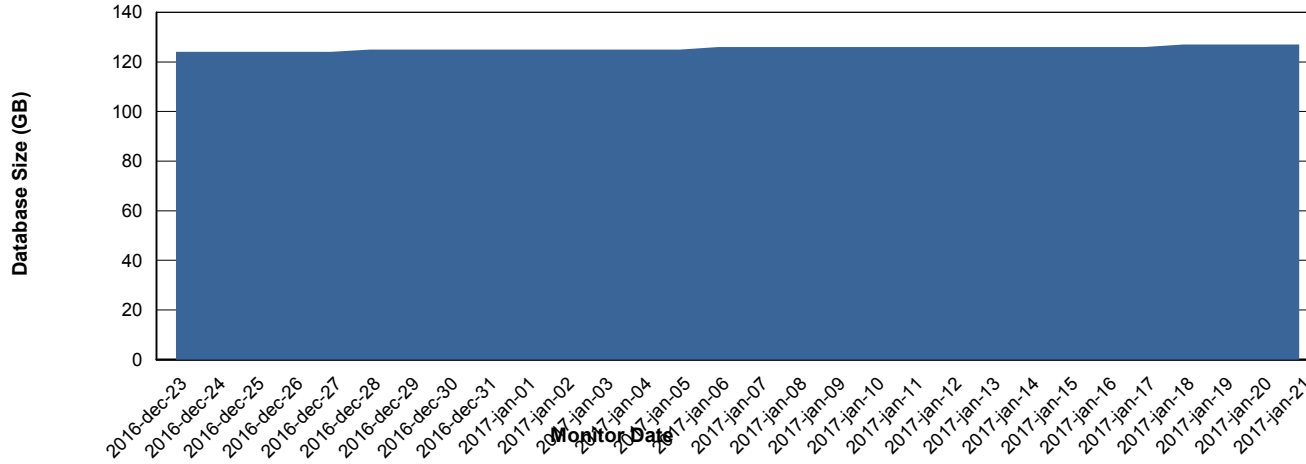
Weekly SLA Customer Report

Customer NIX_Production
 Database ID 51



=====
 DATABASE SIZE NIXDB_Production
 =====

Database growth over last month



=====
 DATABASE TABLESPACES NIXDB_Production
 =====

TOTAL DATABASE SIZE PER TABLESPACE

Date	Tablespace Name	Filesize (Gb)	Usedsize (Gb)	Percentage free
21-1-2017	ABSDATA	54	46	15
	INDX	100	80	20
20-1-2017	ABSDATA	54	46	15
	INDX	100	80	20
19-1-2017	ABSDATA	54	46	15
	INDX	100	80	20
18-1-2017	ABSDATA	54	46	15
	INDX	100	79	21
17-1-2017	ABSDATA	54	46	15
	INDX	100	79	21
16-1-2017	ABSDATA	54	46	15
	INDX	100	79	21
15-1-2017	ABSDATA	54	46	15
	INDX	100	79	21

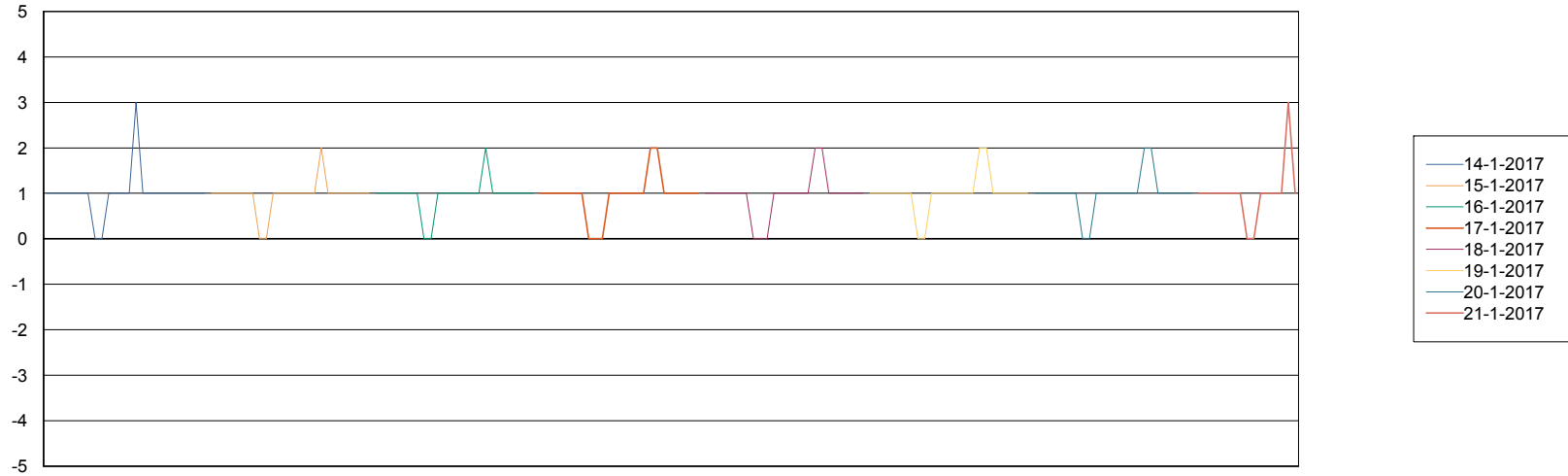
Weekly SLA Customer Report

Customer NIX_Production
Database ID 51



=====
STANDBY DATABASE HEALTH NIX_Production
=====

Recovery lag for last 7 days



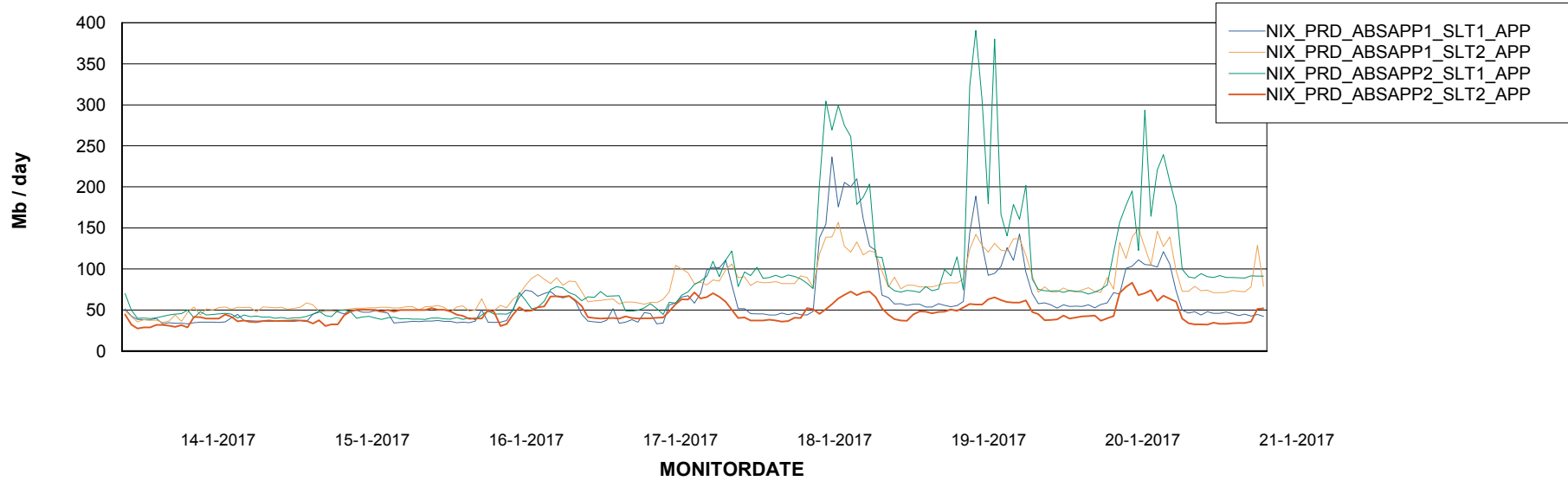
Weekly SLA Customer Report

Customer NIX_Production
Database ID 51



=====
ABSolute Application Server Services
=====

Avg memory used per ABS Server Service



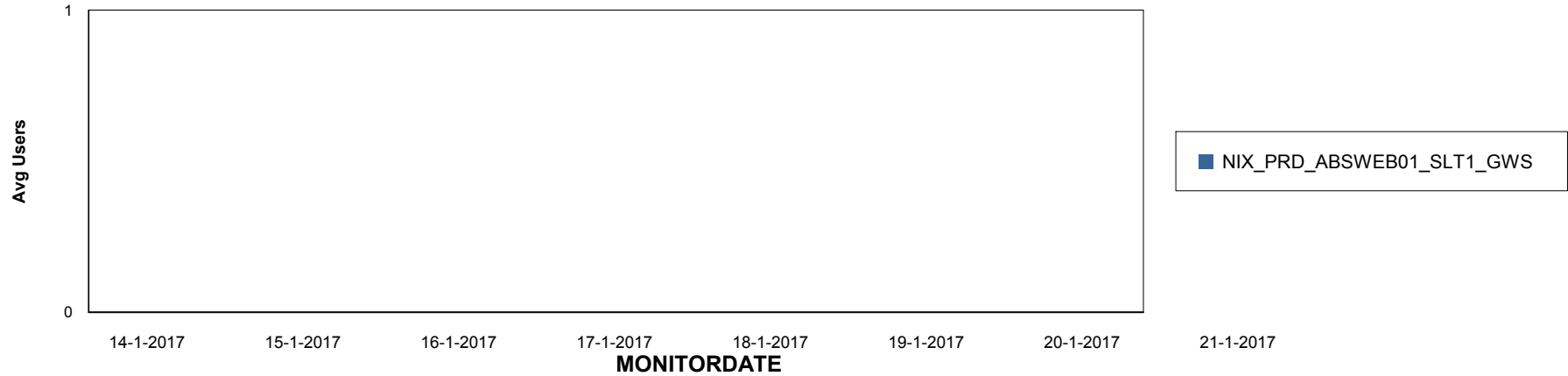
Weekly SLA Customer Report

Customer NIX_Production
Database ID 51

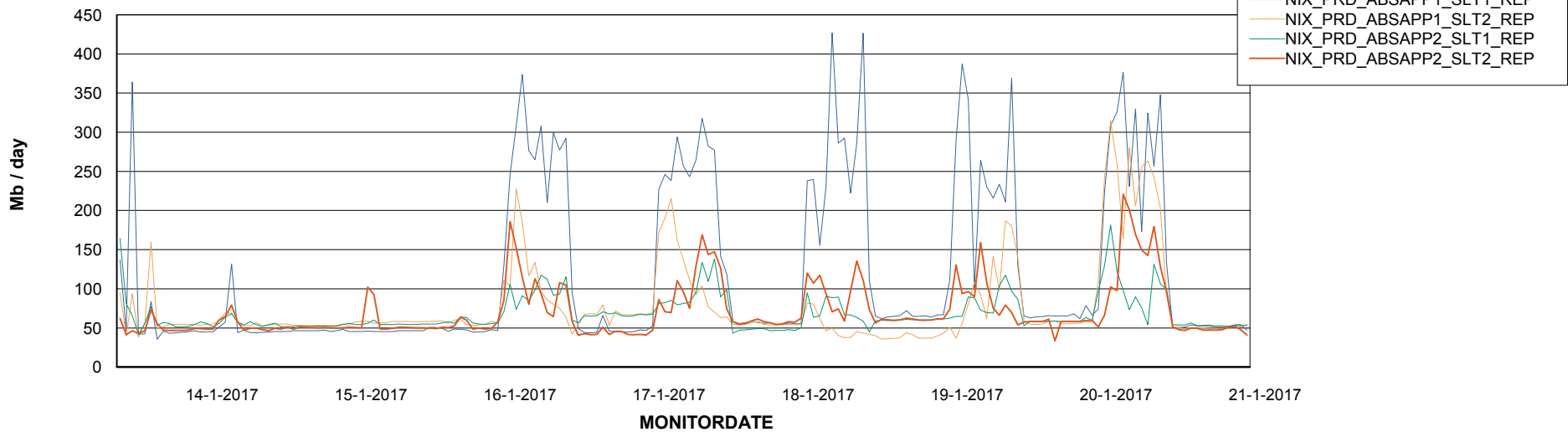


=====
ABSolute Application ReportServer Services
=====

Disaster per ReportServer



Avg memory used per ReportServer Service



Weekly SLA Customer Report

Customer NIX_Production
Database ID 51



Disaster per ABS component

