

Weekly SLA Customer Report

Customer DFD Production
 Database ID 39



=====
 HARDDISK USAGE DFD_PRD_BI1
 =====

	Total disk space on C (GB)	Free disk space on C (GB)	Total disk space on E (GB)	Free disk space on E (GB)
24-12-2016	50	16	100	16
23-12-2016	50	16	100	16
22-12-2016	50	16	100	16
21-12-2016	50	17	100	16
20-12-2016	50	17	100	16
19-12-2016	50	17	100	16
18-12-2016	50	17	100	16

=====
 HARDDISK USAGE DFD_PRD_ORACLE1
 =====

	Total disk space on C (GB)	Free disk space on C (GB)	Total disk space on D (GB)	Free disk space on D (GB)	Total disk space on E (GB)	Free disk space on E (GB)	Total disk space on F (GB)	Free disk space on F (GB)
24-12-2016	78	36	479	353	400	178	800	640
23-12-2016	78	36	479	353	400	179	800	640
22-12-2016	78	36	479	353	400	181	800	640
21-12-2016	78	37	479	353	400	182	800	640
20-12-2016	78	37	479	353	400	183	800	640
19-12-2016	78	37	479	353	400	184	800	640
18-12-2016	78	37	479	353	400	184	800	640

Weekly SLA Customer Report

Customer DFD Production
 Database ID 39



=====
 HARDDISK USAGE DFD_PRD_ORACLE2
 =====

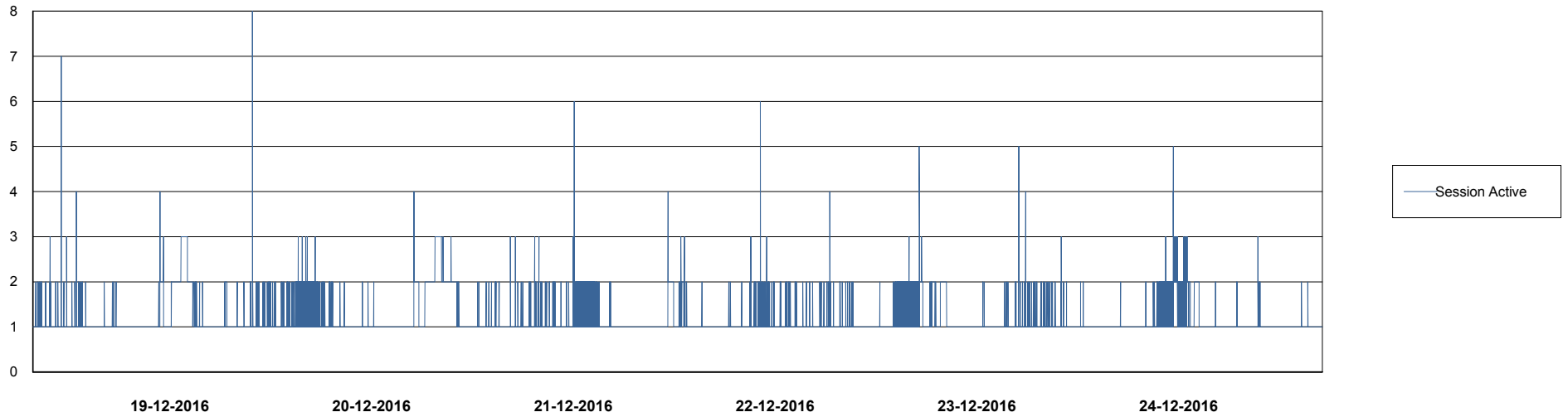
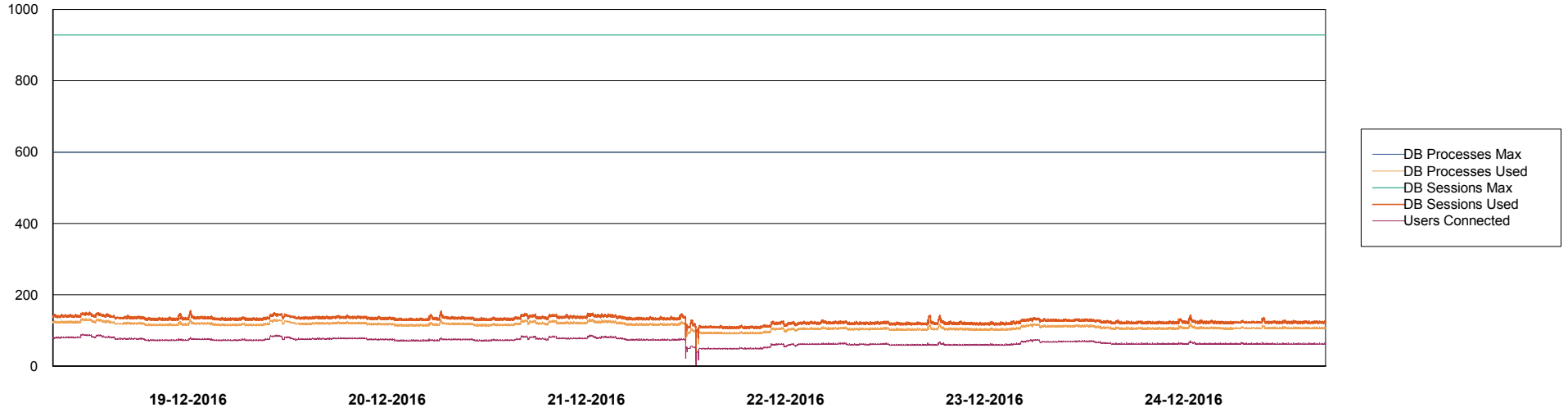
	Total disk space on C (GB)	Free disk space on C (GB)	Total disk space on D (GB)	Free disk space on D (GB)	Total disk space on E (GB)	Free disk space on E (GB)	Total disk space on F (GB)	Free disk space on F (GB)
24-12-2016	78	12	479	342	800	426	800	537
23-12-2016	78	12	479	342	800	427	800	537
22-12-2016	78	12	479	342	800	429	800	537
21-12-2016	78	12	479	342	800	430	800	537
20-12-2016	78	12	479	342	800	431	800	537
19-12-2016	78	12	479	342	800	432	800	537
18-12-2016	78	12	479	342	800	433	800	537

Weekly SLA Customer Report

Customer DFD Production
Database ID 39



DATABASE PERFORMANCE DFDDB_Production

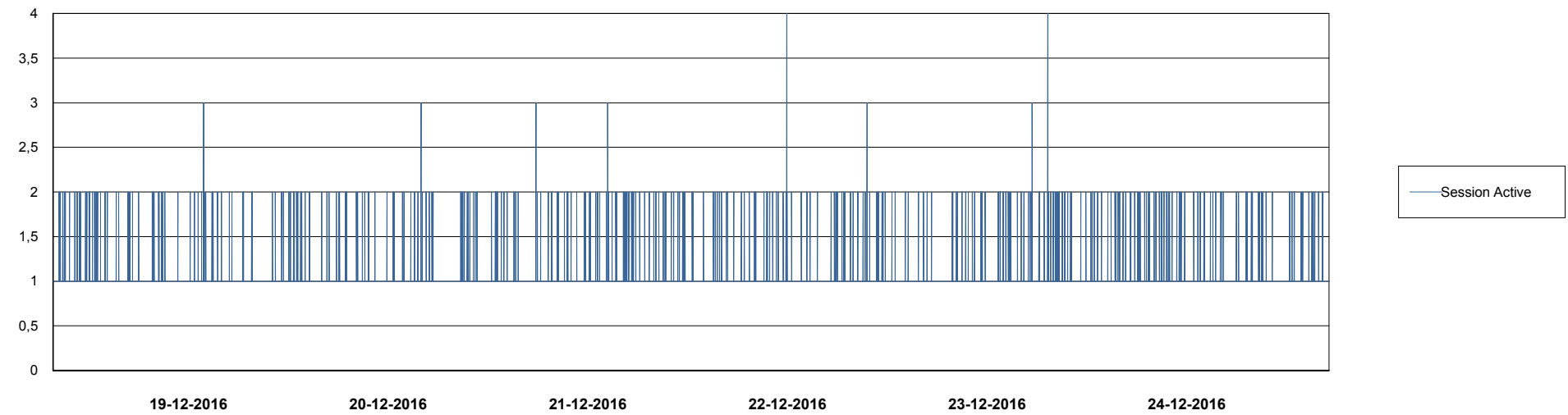
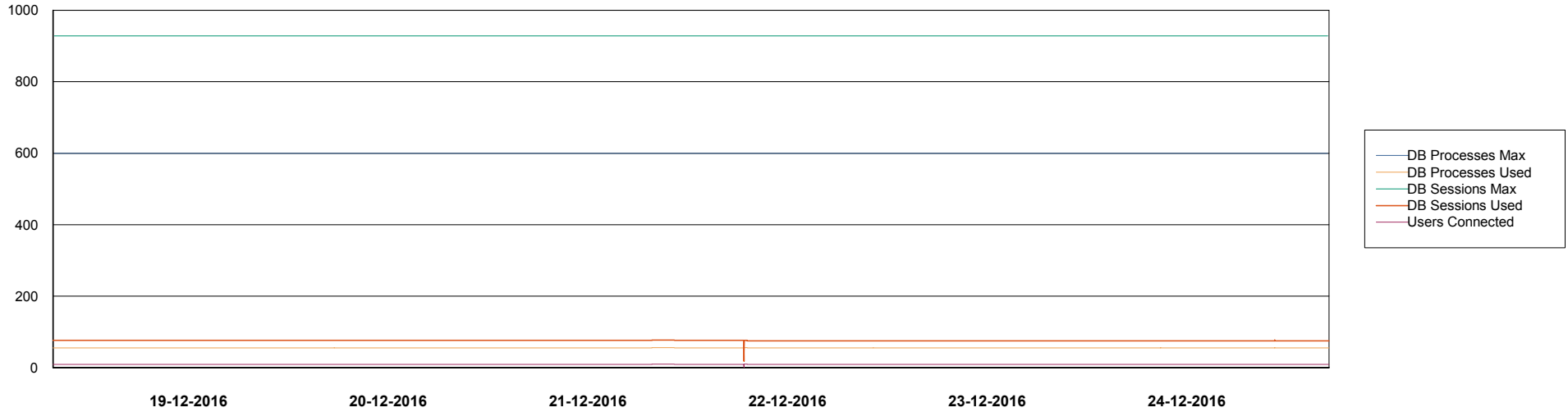


Weekly SLA Customer Report

Customer DFD Production
Database ID 39



DATABASE PERFORMANCE DFDDB_Standby

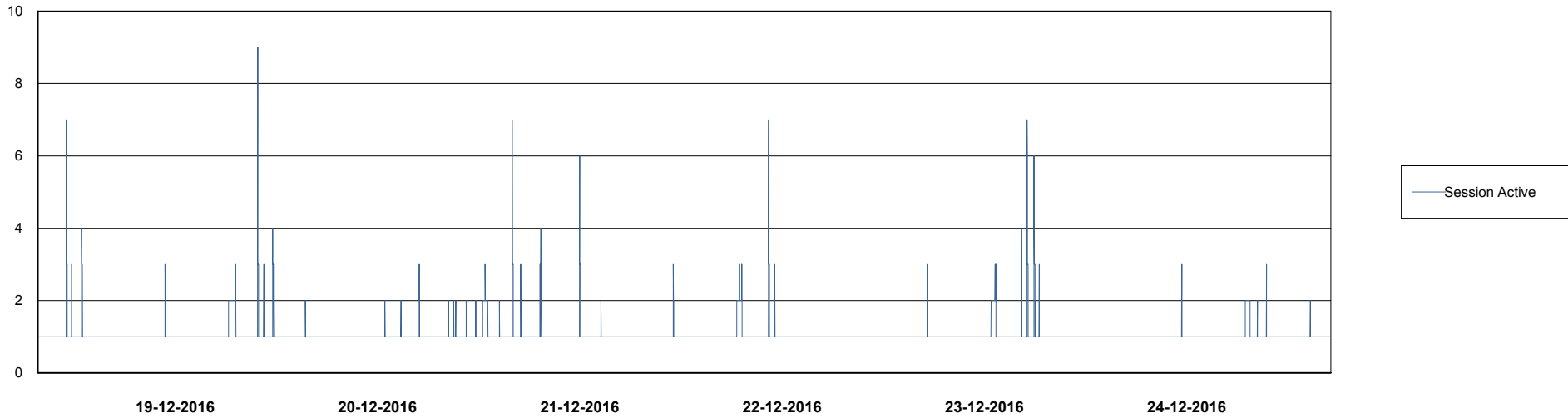
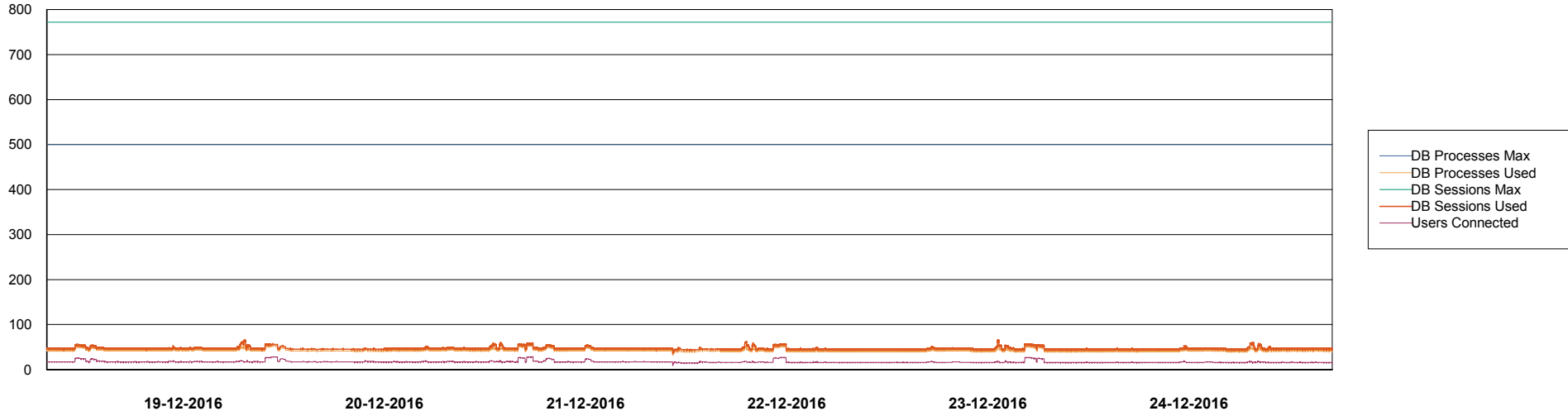


Weekly SLA Customer Report

Customer DFD Production
Database ID 39



DATABASE PERFORMANCE DFDDDBI_Production



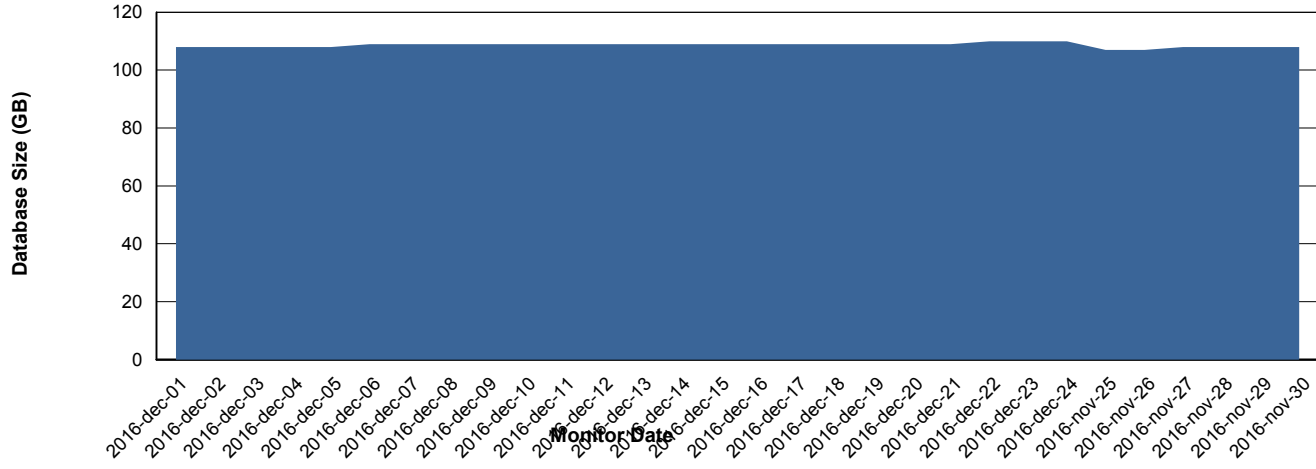
Weekly SLA Customer Report

Customer DFD Production
Database ID 39



=====
DATABASE SIZE DFDDDB_Production
=====

Database growth over last month



Weekly SLA Customer Report

Customer DFD Production
 Database ID 39



=====
 DATABASE TABLESPACES DFDDDB_Production
 =====

TOTAL DATABASE SIZE PER TABLESPACE

Date	Tablespace Name	Filesize (Gb)	Usedsize (Gb)	Percentage free
24-12-2016	ABSDATA	39	32	18
	INDX	88	75	15
23-12-2016	ABSDATA	39	32	18
	INDX	88	75	15
22-12-2016	ABSDATA	39	32	18
	INDX	88	75	15
21-12-2016	ABSDATA	39	32	18
	INDX	88	75	15
20-12-2016	ABSDATA	39	32	18
	INDX	88	75	15
19-12-2016	ABSDATA	39	32	18
	INDX	88	75	15
18-12-2016	ABSDATA	39	32	18
	INDX	88	75	15

Weekly SLA Customer Report

Customer DFD Production
 Database ID 39



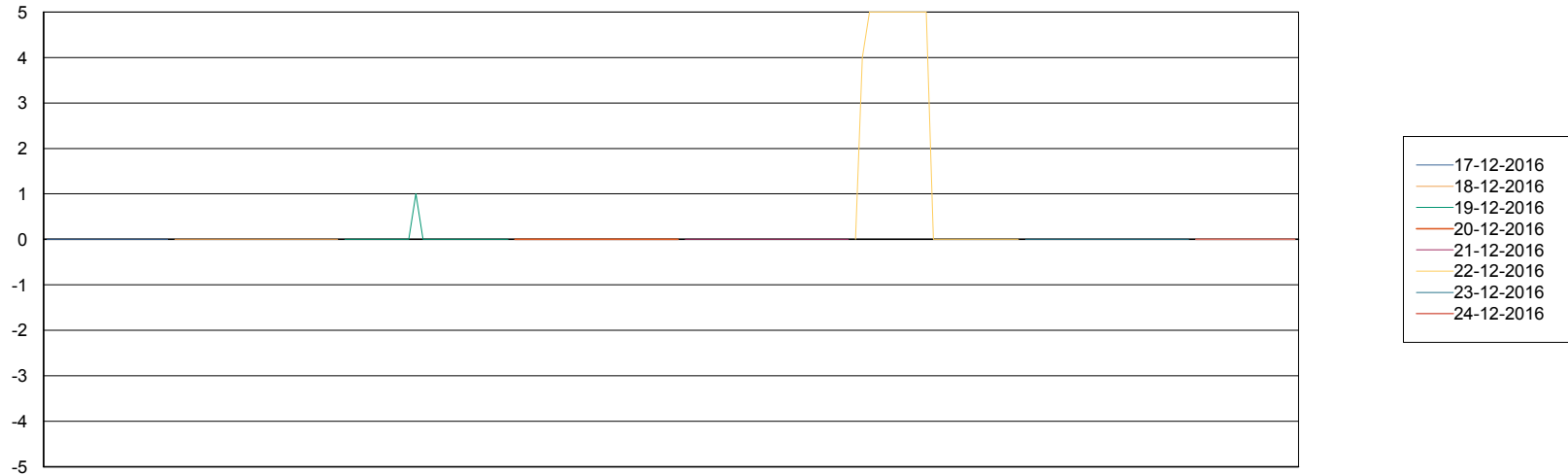
=====
 DATABASE TABLESPACES DFDDDBI_Production
 =====

TOTAL DATABASE SIZE PER TABLESPACE

Date	Tablespace Name	Filesize (Gb)	Usedsize (Gb)	Percentage free
24-12-2016	ABSDATA	23	19	17
	INDX	24	20	17
23-12-2016	ABSDATA	23	19	17
	INDX	24	20	17
22-12-2016	ABSDATA	23	19	17
	INDX	24	20	17
21-12-2016	ABSDATA	22	19	14
	INDX	23	20	13
20-12-2016	ABSDATA	22	19	14
	INDX	23	20	13
19-12-2016	ABSDATA	22	19	14
	INDX	23	20	13
18-12-2016	ABSDATA	22	19	14
	INDX	23	20	13

=====
 STANDBY DATABASE HEALTH DFD Production
 =====

Recovery lag for last 7 days



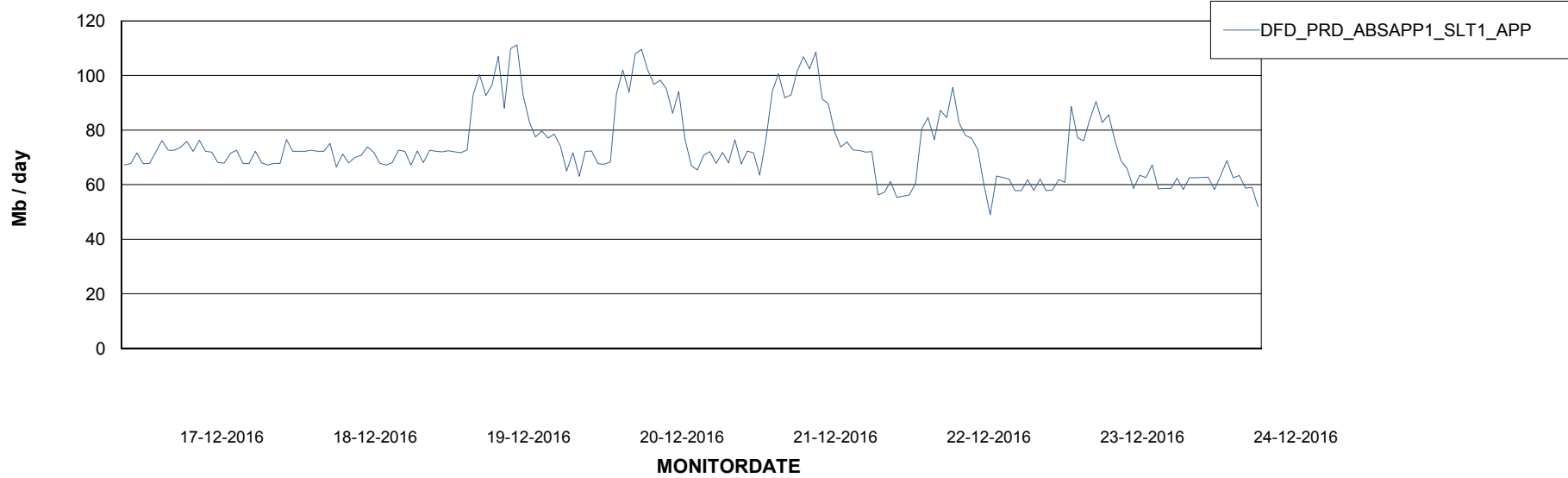
Weekly SLA Customer Report

Customer DFD Production
Database ID 39



=====
ABSolute Application Server Services
=====

Avg memory used per ABS Server Service



Weekly SLA Customer Report

Customer DFD Production
Database ID 39



=====
ABSolute Application ReportServer Services
=====

Avg memory used per ReportServer Service

