

Weekly SLA Customer Report

Customer PCO Production
 Database ID 44



=====
 HARDDISK USAGE PCO_PRD_ORACLE1
 =====

	Total disk space on C (GB)	Free disk space on C (GB)	Total disk space on D (GB)	Free disk space on D (GB)
17-12-2016	279	171	838	208
16-12-2016	279	171	838	240
15-12-2016	279	172	838	180
14-12-2016	279	172	838	147
13-12-2016	279	172	838	160
12-12-2016	279	173	838	160
11-12-2016	279	173	838	171

=====
 HARDDISK USAGE PCO_PRD_ORACLE2
 =====

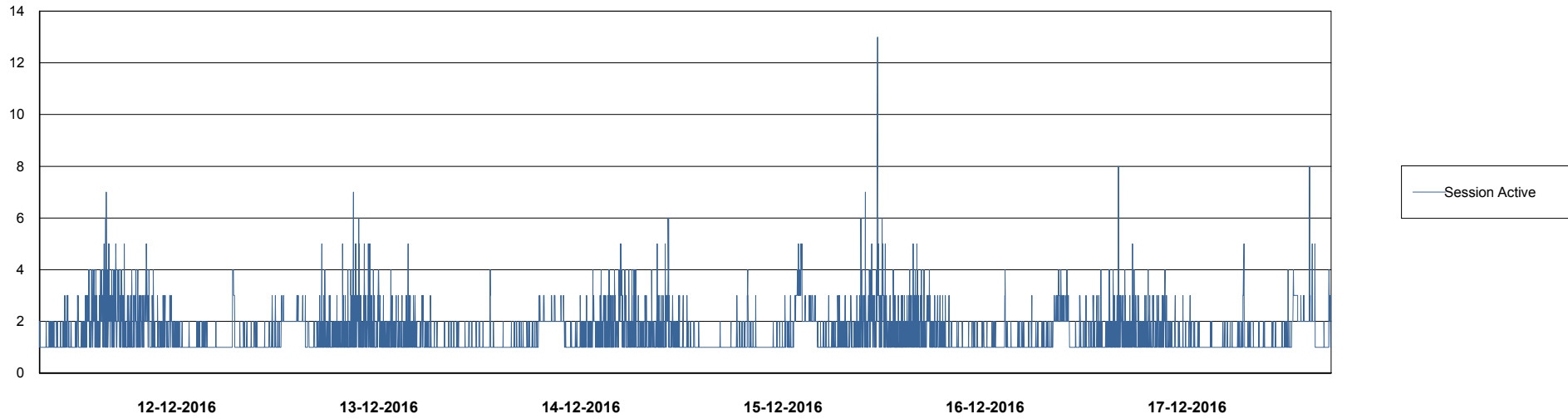
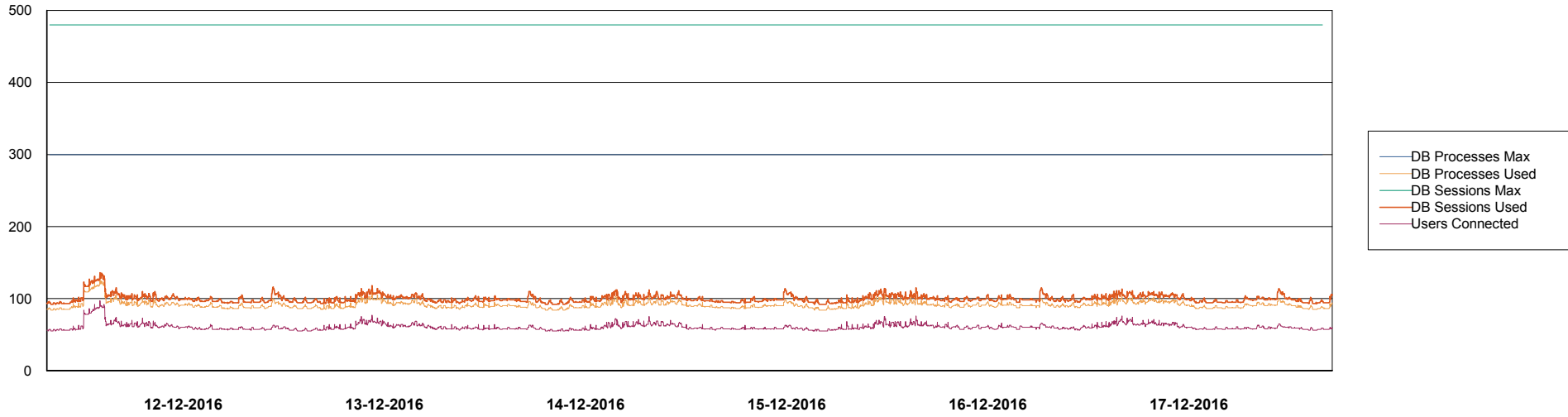
	Total disk space on C (GB)	Free disk space on C (GB)	Total disk space on D (GB)	Free disk space on D (GB)
17-12-2016	279	213	838	467
16-12-2016	279	214	838	470
15-12-2016	279	214	838	474
14-12-2016	279	209	838	479
13-12-2016	279	203	838	483
12-12-2016	279	203	838	488
11-12-2016	279	204	838	489

Weekly SLA Customer Report

Customer PCO Production
Database ID 44



DATABASE PERFORMANCE PCODB_Production

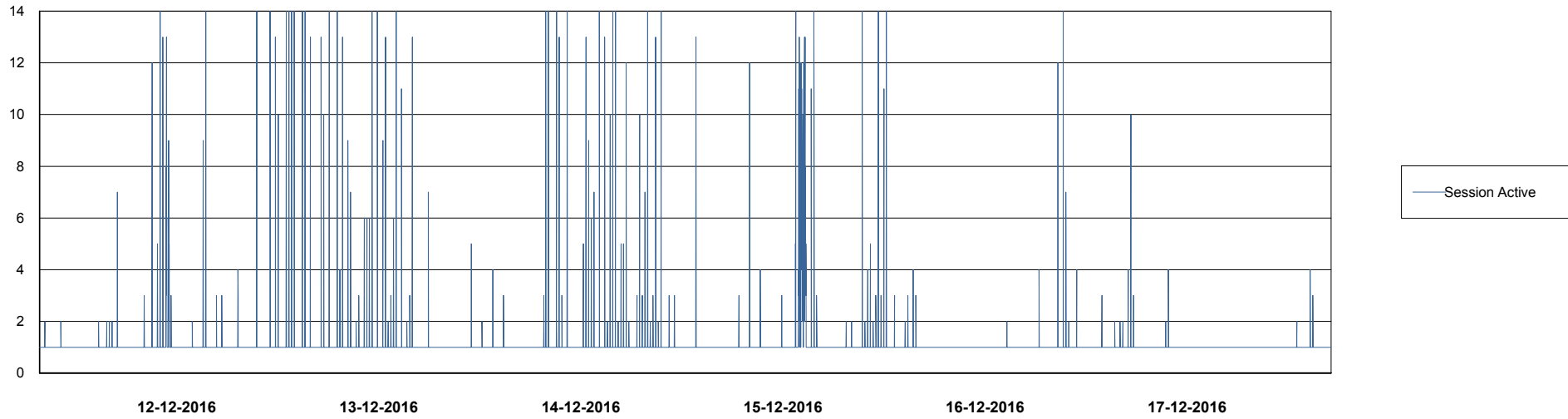
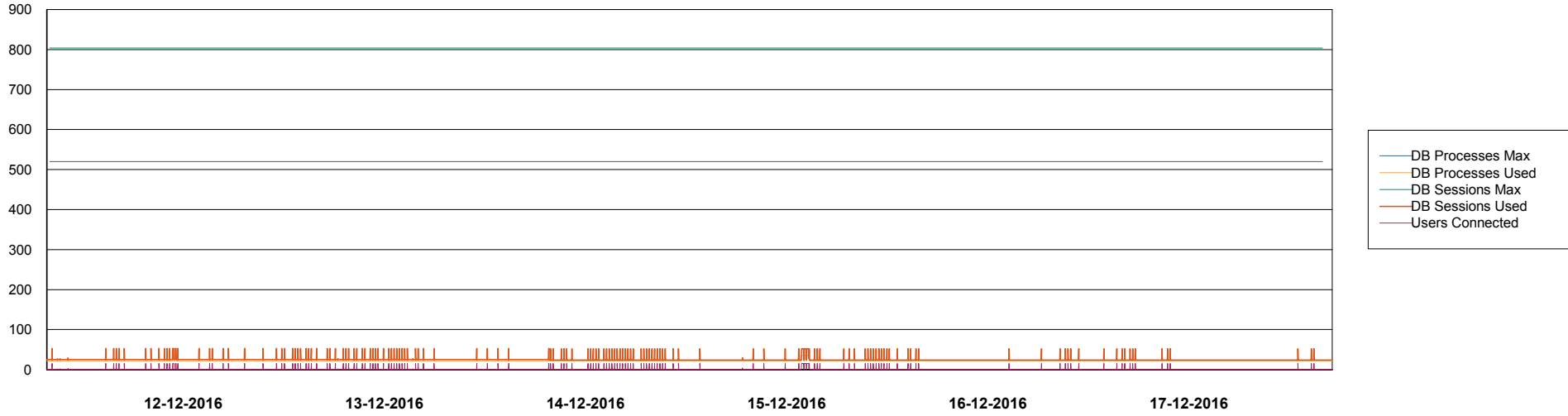


Weekly SLA Customer Report

Customer PCO Production
Database ID 44



=====
DATABASE PERFORMANCE PCODB_Standby
=====



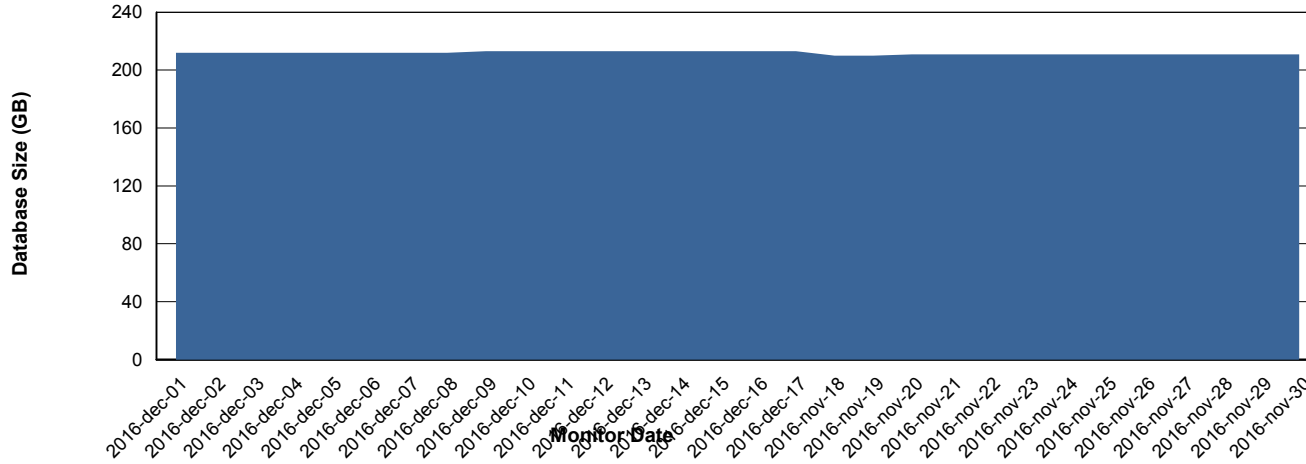
Weekly SLA Customer Report

Customer PCO Production
 Database ID 44



=====
 DATABASE SIZE PCODB_Production
 =====

Database growth over last month



=====
 DATABASE TABLESPACES PCODB_Production
 =====

TOTAL DATABASE SIZE PER TABLESPACE

Date	Tablespace Name	Filesize (Gb)	Usedsize (Gb)	Percentage free
17-12-2016	ABSDATA	88	76	14
	INDX	156	135	13
16-12-2016	ABSDATA	88	76	14
	INDX	156	135	13
15-12-2016	ABSDATA	88	76	14
	INDX	156	135	13
14-12-2016	ABSDATA	88	76	14
	INDX	156	135	13
13-12-2016	ABSDATA	88	76	14
	INDX	156	135	13
12-12-2016	ABSDATA	88	76	14
	INDX	156	135	13
11-12-2016	ABSDATA	88	76	14
	INDX	156	135	13

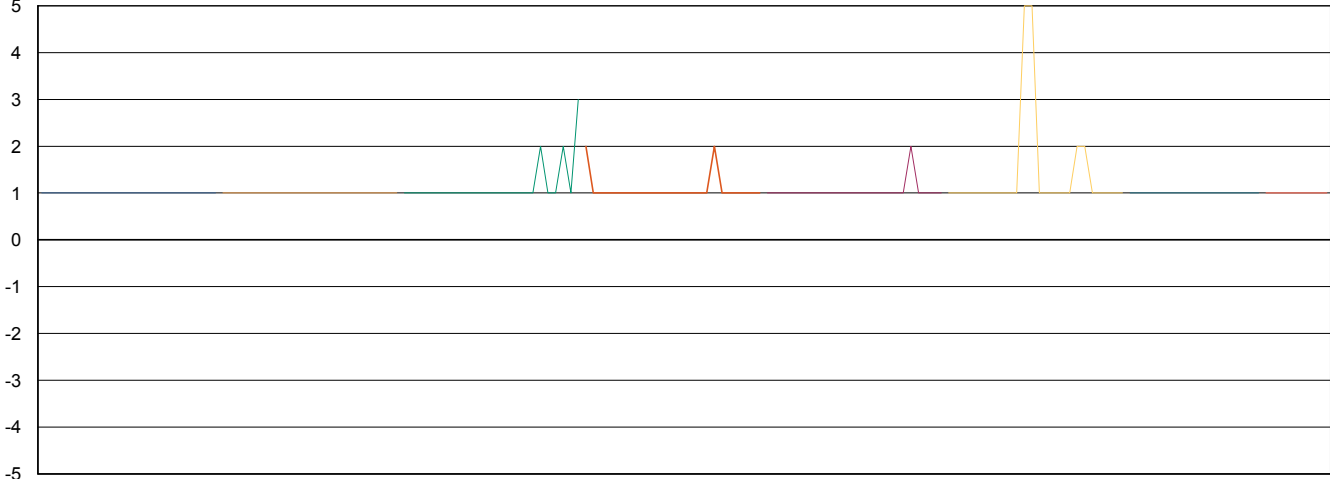
Weekly SLA Customer Report

Customer PCO Production
Database ID 44



=====
STANDBY DATABASE HEALTH PCO Production
=====

Recovery lag for last 7 days



- 10-12-2016
- 11-12-2016
- 12-12-2016
- 13-12-2016
- 14-12-2016
- 15-12-2016
- 16-12-2016
- 17-12-2016