

Weekly SLA Customer Report

Customer NIX_Production
Database ID 51



=====
HARDDISK USAGE NIX_PRD_ABSAPP2
=====

	Total disk space on C (GB)	Free disk space on C (GB)
10-12-2016	200	22
9-12-2016	200	25
8-12-2016	200	28
7-12-2016	200	30
6-12-2016	200	31
5-12-2016	200	32
4-12-2016	200	32

=====
HARDDISK USAGE NIX_PRD_ABSWEB01
=====

	Total disk space on C (GB)	Free disk space on C (GB)
10-12-2016	300	275
9-12-2016	300	275
8-12-2016	300	275
7-12-2016	300	275
6-12-2016	300	275
5-12-2016	300	275
4-12-2016	300	275

Weekly SLA Customer Report

Customer NIX_Production
 Database ID 51



=====
 HARDDISK USAGE NIX_PRD_ORACLE_BI1
 =====

	Total disk space on C (GB)	Free disk space on C (GB)	Total disk space on E (GB)	Free disk space on E (GB)	Total disk space on F (GB)	Free disk space on F (GB)	Total disk space on G (GB)	Free disk space on G (GB)
10-12-2016	279	111	558	284	279	131	558	382
9-12-2016	279	111	558	283	279	131	558	366
8-12-2016	279	112	558	284	279	131	558	371
7-12-2016	279	112	558	284	279	131	558	377
6-12-2016	279	111	558	283	279	131	558	380
5-12-2016	279	111	558	282	279	131	558	380
4-12-2016	279	112	558	281	279	131	558	380

=====
 HARDDISK USAGE NIX_PRD_ORCDB1
 =====

	Total disk space on C (GB)	Free disk space on C (GB)	Total disk space on E (GB)	Free disk space on E (GB)	Total disk space on F (GB)	Free disk space on F (GB)	Total disk space on G (GB)	Free disk space on G (GB)
10-12-2016	279	52	558	456	558	457	279	71
9-12-2016	279	52	558	456	558	457	279	73
8-12-2016	279	52	558	456	558	457	279	75
7-12-2016	279	52	558	456	558	457	279	77
6-12-2016	279	52	558	456	558	457	279	80
5-12-2016	279	52	558	456	558	457	279	82
4-12-2016	279	52	558	456	558	457	279	84

Weekly SLA Customer Report

Customer NIX_Production
 Database ID 51



=====
 HARDDISK USAGE NIX_PRD_ORCDB2
 =====

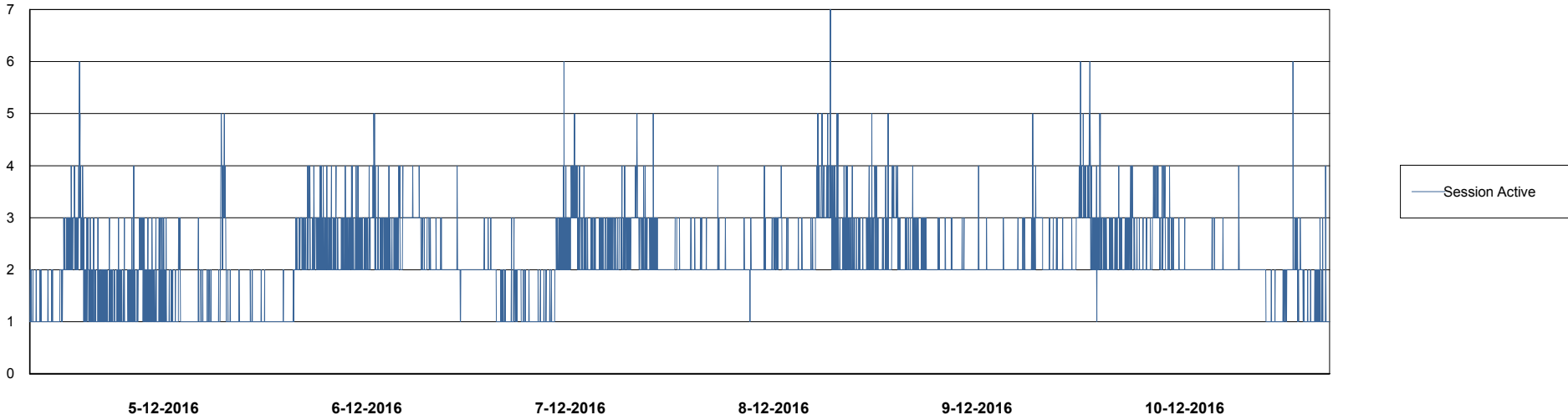
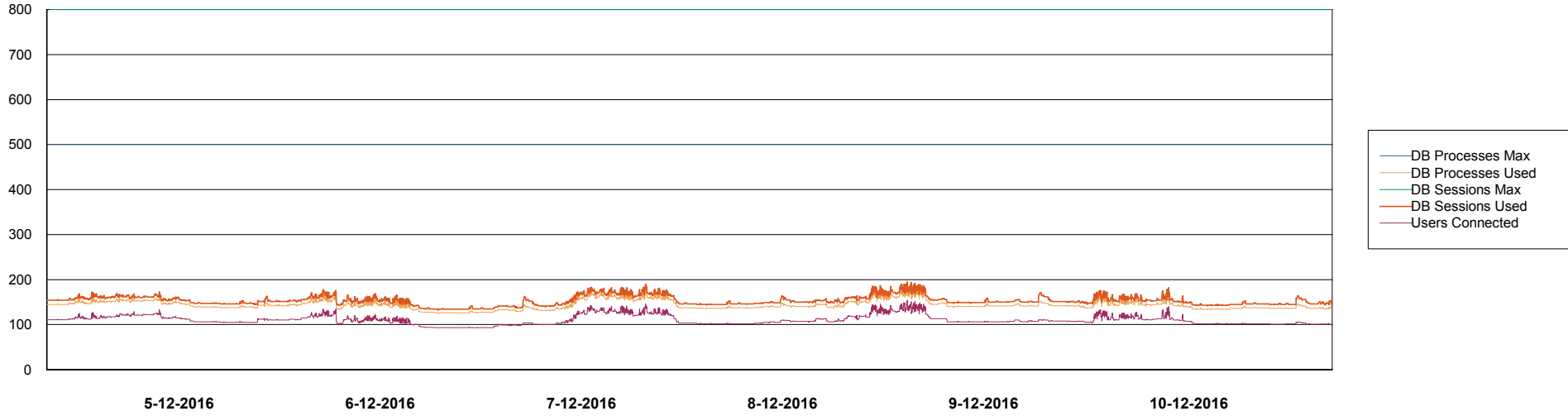
	Total disk space on C (GB)	Free disk space on C (GB)	Total disk space on E (GB)	Free disk space on E (GB)	Total disk space on F (GB)	Free disk space on F (GB)	Total disk space on G (GB)	Free disk space on G (GB)
10-12-2016	279	52	558	456	558	457	279	71
9-12-2016	279	52	558	456	558	457	279	73
8-12-2016	279	52	558	456	558	457	279	75
7-12-2016	279	52	558	456	558	457	279	77
6-12-2016	279	52	558	456	558	457	279	80
5-12-2016	279	52	558	456	558	457	279	82
4-12-2016	279	52	558	456	558	457	279	84

Weekly SLA Customer Report

Customer NIX_Production
Database ID 51



DATABASE PERFORMANCE NIXDB_Production

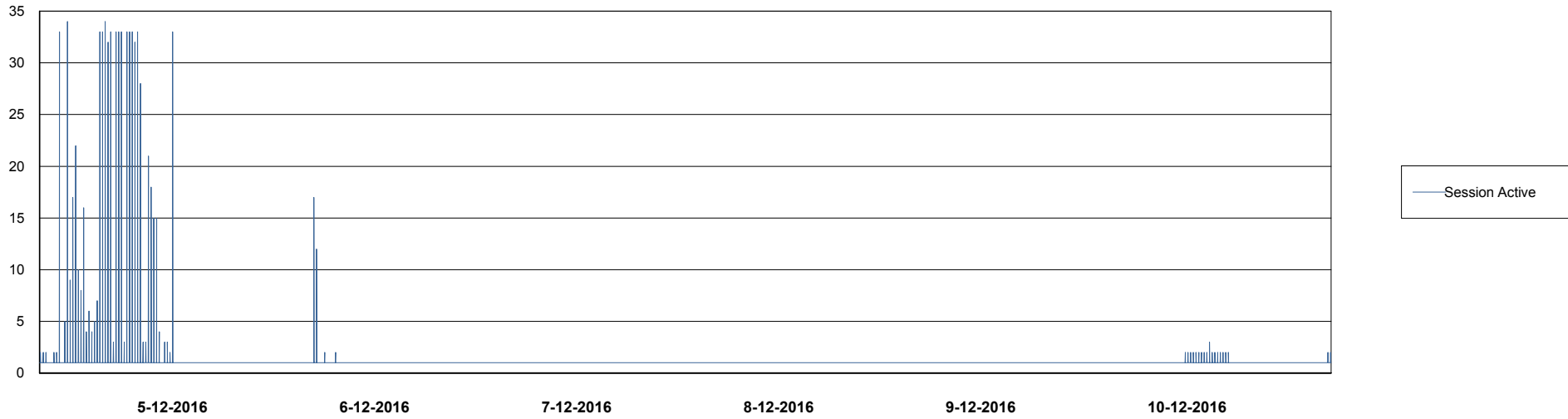
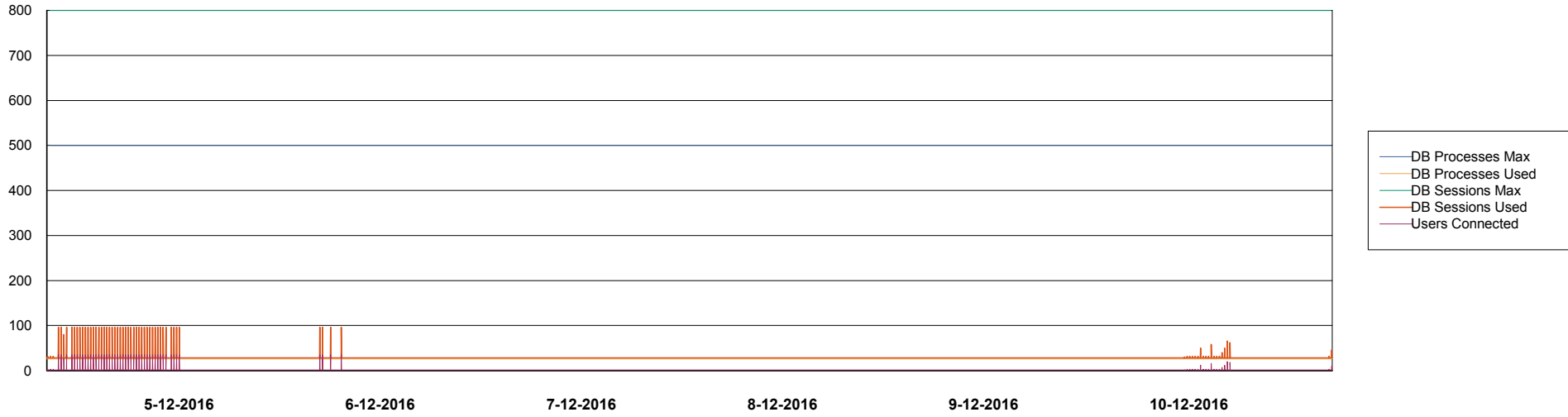


Weekly SLA Customer Report

Customer NIX_Production
Database ID 51



=====
DATABASE PERFORMANCE NIXDB_Standby
=====



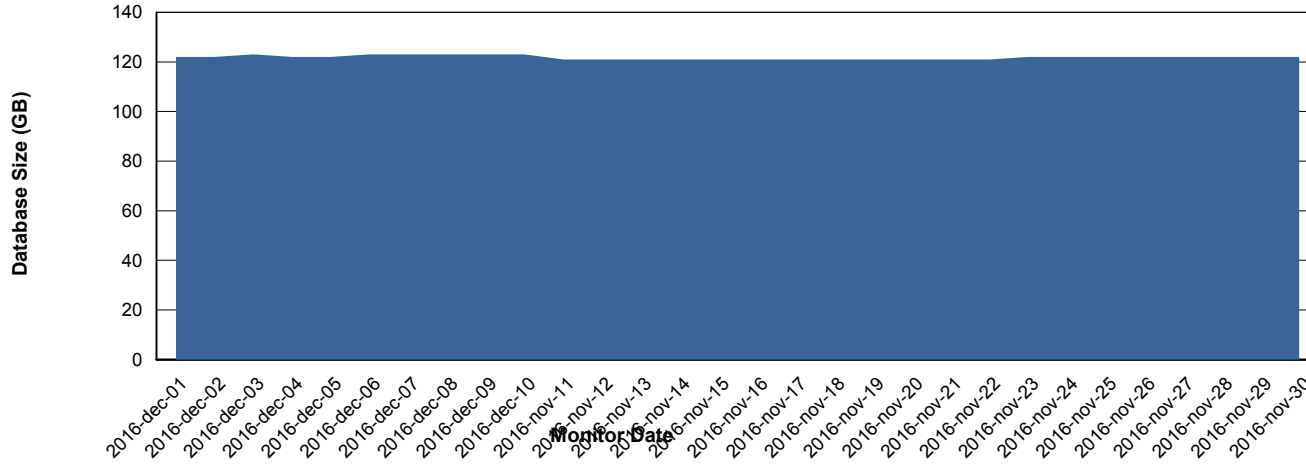
Weekly SLA Customer Report

Customer NIX_Production
 Database ID 51



=====
 DATABASE SIZE NIXDB_Production
 =====

Database growth over last month



=====
 DATABASE TABLESPACES NIXDB_Production
 =====

TOTAL DATABASE SIZE PER TABLESPACE

Date	Tablespace Name	Filesize (Gb)	Usedsize (Gb)	Percentage free
10-12-2016	ABSDATA	54	45	17
	INDX	100	77	23
9-12-2016	ABSDATA	54	45	17
	INDX	100	77	23
8-12-2016	ABSDATA	54	45	17
	INDX	100	77	23
7-12-2016	ABSDATA	54	45	17
	INDX	100	77	23
6-12-2016	ABSDATA	54	45	17
	INDX	100	77	23
5-12-2016	ABSDATA	54	45	17
	INDX	100	77	23
4-12-2016	ABSDATA	54	45	17
	INDX	100	77	23

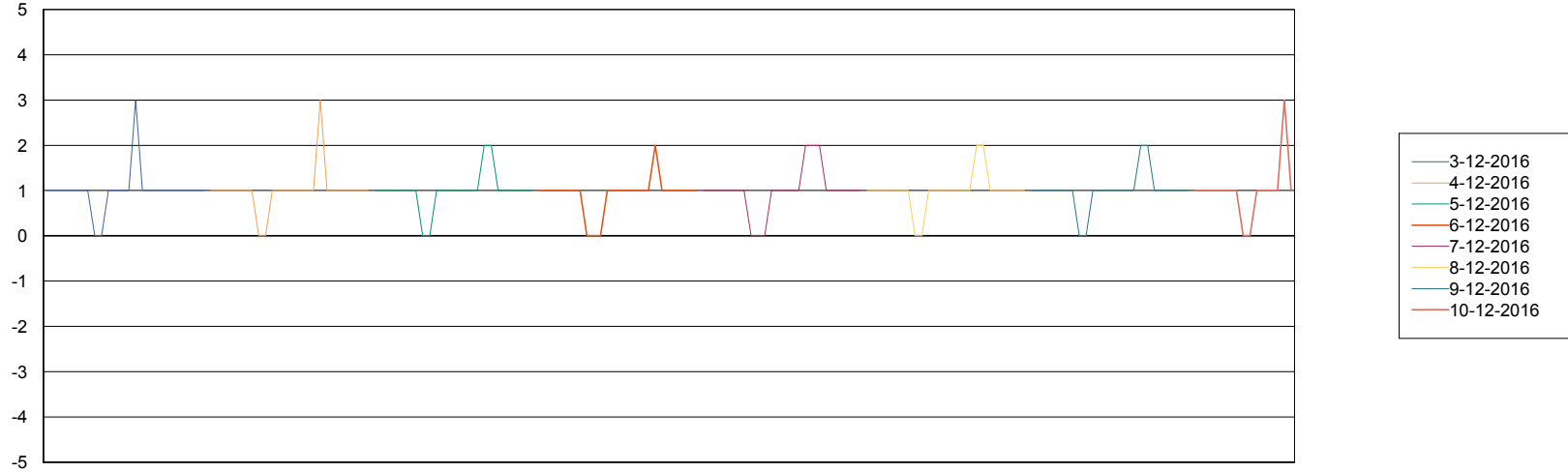
Weekly SLA Customer Report

Customer NIX_Production
Database ID 51



=====
STANDBY DATABASE HEALTH NIX_Production
=====

Recovery lag for last 7 days



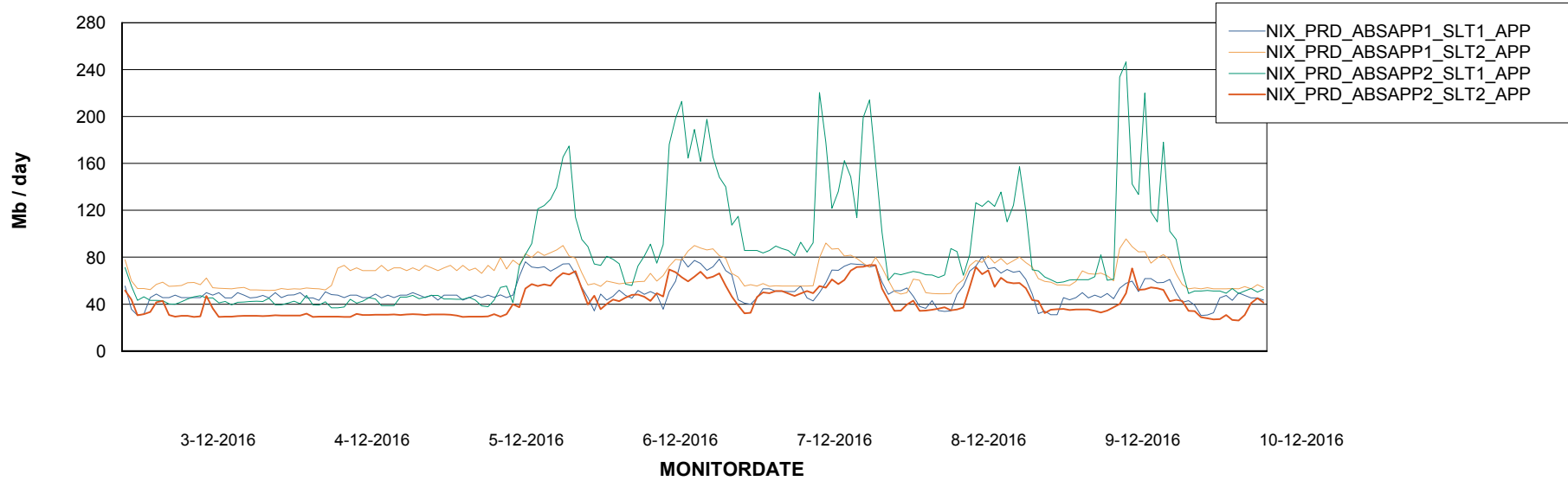
Weekly SLA Customer Report

Customer NIX_Production
Database ID 51



=====
ABSolute Application Server Services
=====

Avg memory used per ABS Server Service



Weekly SLA Customer Report

Customer NIX_Production
Database ID 51



=====
ABSolute Application ReportServer Services
=====

Avg memory used per ReportServer Service

