

Weekly SLA Customer Report

Customer NIX_Production
 Database ID 51



=====
 HARDDISK USAGE NIX_PRD_ABSAPP2
 =====

	Total disk space on C (GB)	Free disk space on C (GB)
19-11-2016	200	87
18-11-2016	200	90
17-11-2016	200	95
16-11-2016	200	100
15-11-2016	200	106
14-11-2016	200	111
13-11-2016	200	115

=====
 HARDDISK USAGE NIX_PRD_ABSWEB01
 =====

	Total disk space on C (GB)	Free disk space on C (GB)
19-11-2016	300	276
18-11-2016	300	276
17-11-2016	300	276
16-11-2016	300	276
15-11-2016	300	276
14-11-2016	300	276
13-11-2016	300	276

Weekly SLA Customer Report

Customer NIX_Production
 Database ID 51



=====
 HARDDISK USAGE NIX_PRD_ORACLE_BI1
 =====

	Total disk space on C (GB)	Free disk space on C (GB)	Total disk space on E (GB)	Free disk space on E (GB)	Total disk space on F (GB)	Free disk space on F (GB)	Total disk space on G (GB)	Free disk space on G (GB)
19-11-2016	279	118	558	281	279	131	558	373
18-11-2016	279	119	558	281	279	131	558	359
17-11-2016	279	118	558	281	279	131	558	363
16-11-2016	279	112	558	281	279	131	558	368
15-11-2016	279	112	558	280	279	131	558	373
14-11-2016	279	113	558	280	279	131	558	378
13-11-2016	279	111	558	281	279	131	558	382

=====
 HARDDISK USAGE NIX_PRD_ORCDB1
 =====

	Total disk space on C (GB)	Free disk space on C (GB)	Total disk space on E (GB)	Free disk space on E (GB)	Total disk space on F (GB)	Free disk space on F (GB)	Total disk space on G (GB)	Free disk space on G (GB)
19-11-2016	279	89	558	458	558	457	279	114
18-11-2016	279	89	558	458	558	457	279	116
17-11-2016	279	89	558	459	558	457	279	118
16-11-2016	279	89	558	459	558	457	279	121
15-11-2016	279	90	558	458	558	457	279	123
14-11-2016	279	90	558	459	558	457	279	126
13-11-2016	279	89	558	459	558	457	279	127

Weekly SLA Customer Report

Customer NIX_Production
 Database ID 51



=====
 HARDDISK USAGE NIX_PRD_ORCDB2
 =====

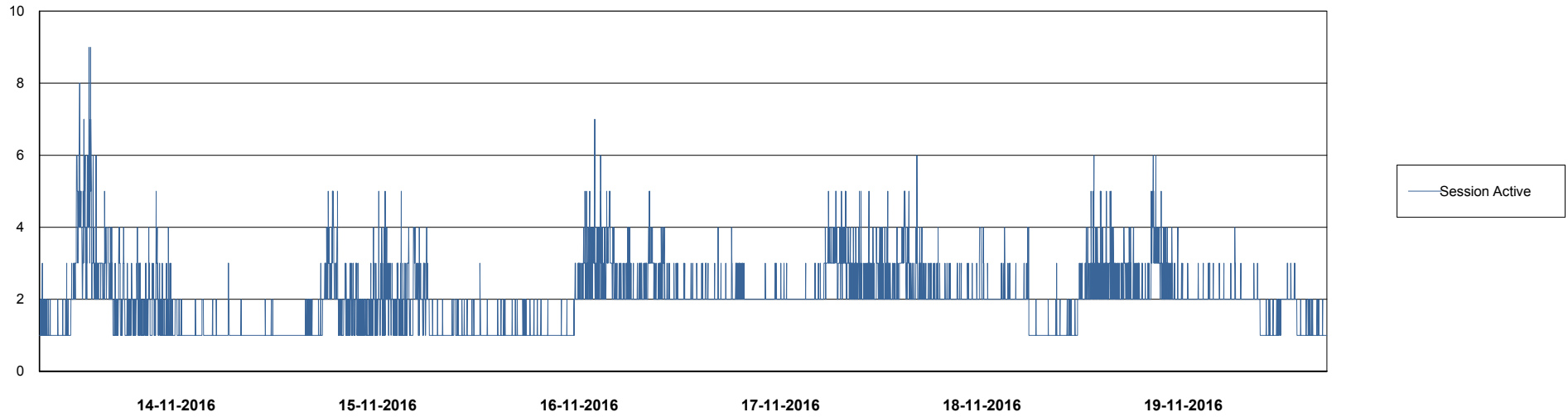
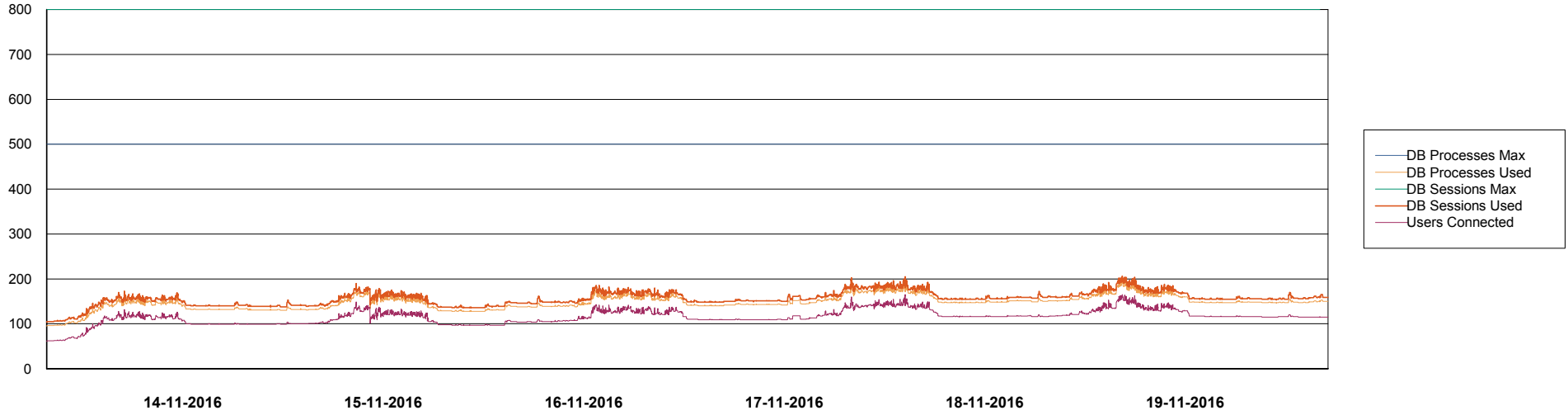
	Total disk space on C (GB)	Free disk space on C (GB)	Total disk space on E (GB)	Free disk space on E (GB)	Total disk space on F (GB)	Free disk space on F (GB)	Total disk space on G (GB)	Free disk space on G (GB)
19-11-2016	279	89	558	458	558	457	279	114
18-11-2016	279	89	558	458	558	457	279	116
17-11-2016	279	89	558	459	558	457	279	118
16-11-2016	279	89	558	459	558	457	279	121
15-11-2016	279	90	558	458	558	457	279	123
14-11-2016	279	90	558	459	558	457	279	126
13-11-2016	279	89	558	459	558	457	279	127

Weekly SLA Customer Report

Customer NIX_Production
Database ID 51



DATABASE PERFORMANCE NIXDB_Production

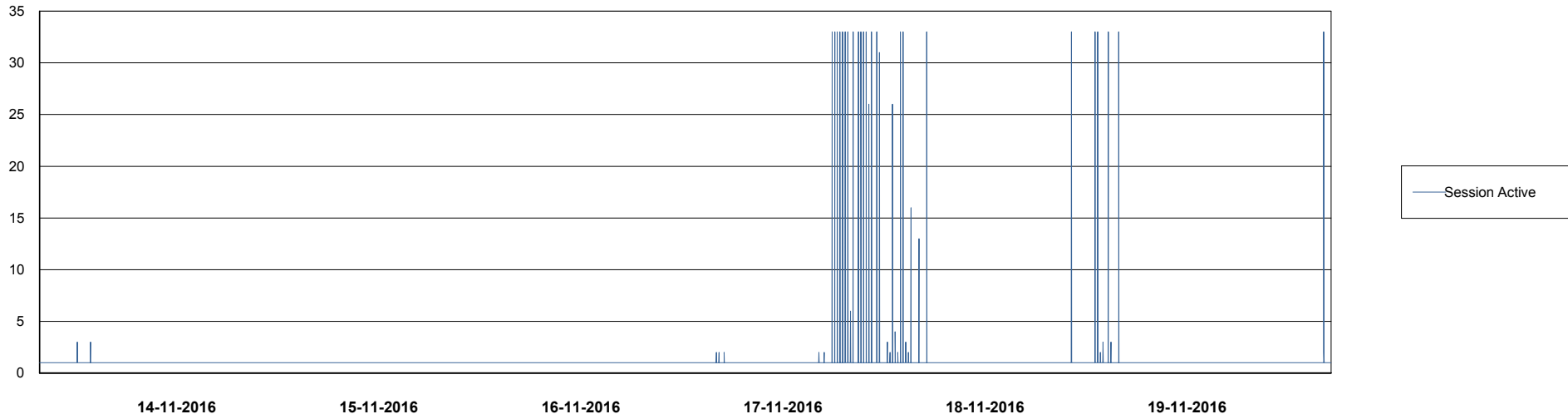
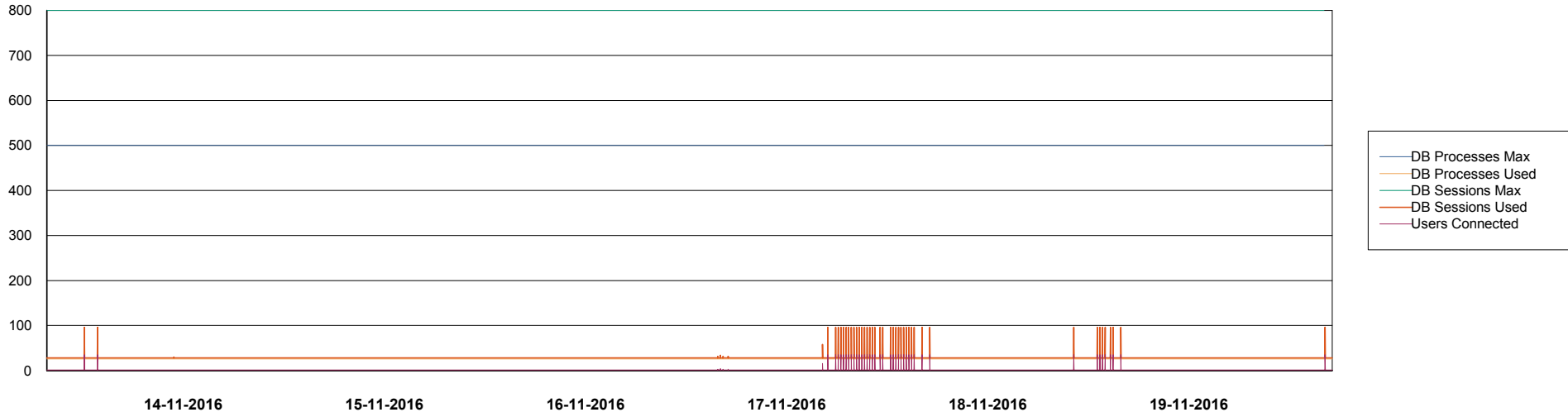


Weekly SLA Customer Report

Customer NIX_Production
Database ID 51



=====
DATABASE PERFORMANCE NIXDB_Standby
=====



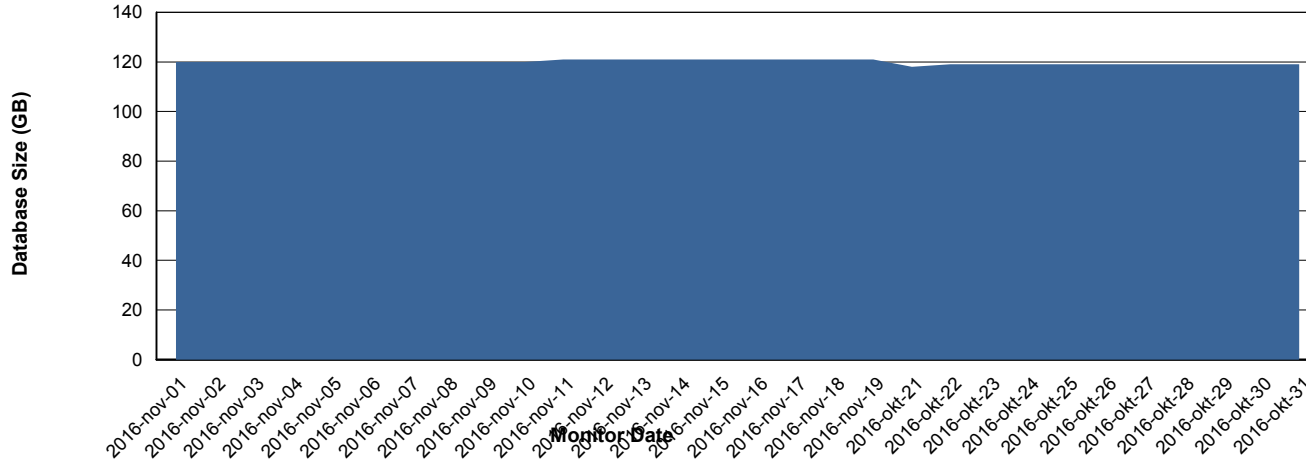
Weekly SLA Customer Report

Customer NIX_Production
 Database ID 51



=====
 DATABASE SIZE NIXDB_Production
 =====

Database growth over last month



=====
 DATABASE TABLESPACES NIXDB_Production
 =====

TOTAL DATABASE SIZE PER TABLESPACE

Date	Tablespace Name	Filesize (Gb)	Usedsize (Gb)	Percentage free
19-11-2016	ABSDATA	54	44	19
	INDX	100	76	24
18-11-2016	ABSDATA	54	44	19
	INDX	100	76	24
17-11-2016	ABSDATA	54	44	19
	INDX	100	76	24
16-11-2016	ABSDATA	54	44	19
	INDX	100	75	25
15-11-2016	ABSDATA	54	44	19
	INDX	100	75	25
14-11-2016	ABSDATA	54	44	19
	INDX	100	75	25
13-11-2016	ABSDATA	54	44	19
	INDX	100	75	25

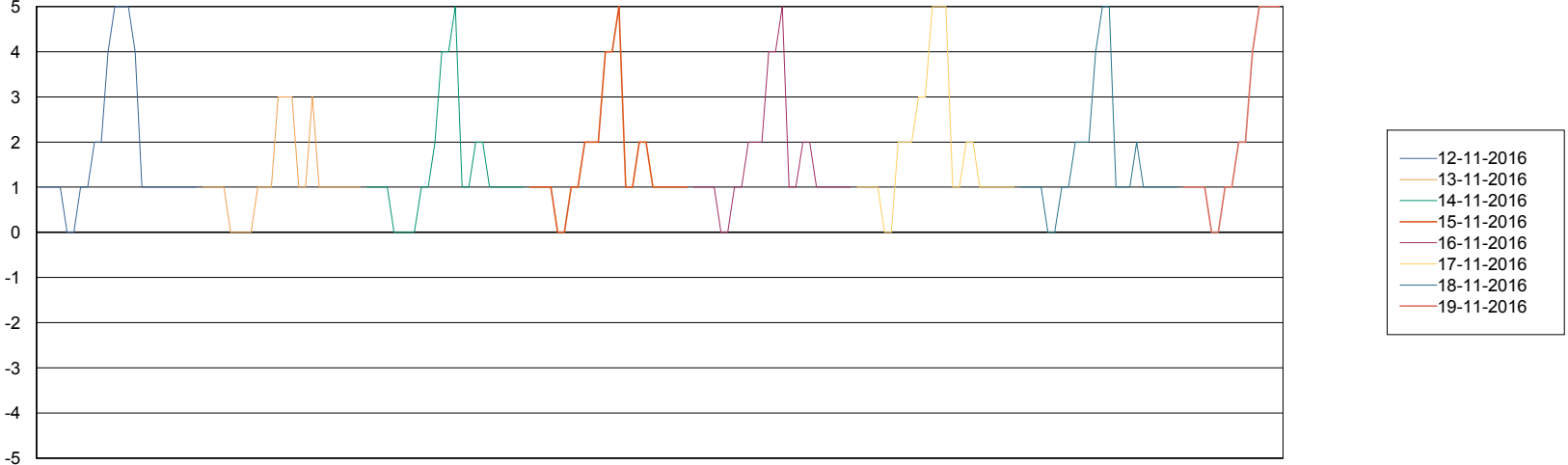
Weekly SLA Customer Report

Customer NIX_Production
Database ID 51



=====
STANDBY DATABASE HEALTH NIX_Production
=====

Recovery lag for last 7 days



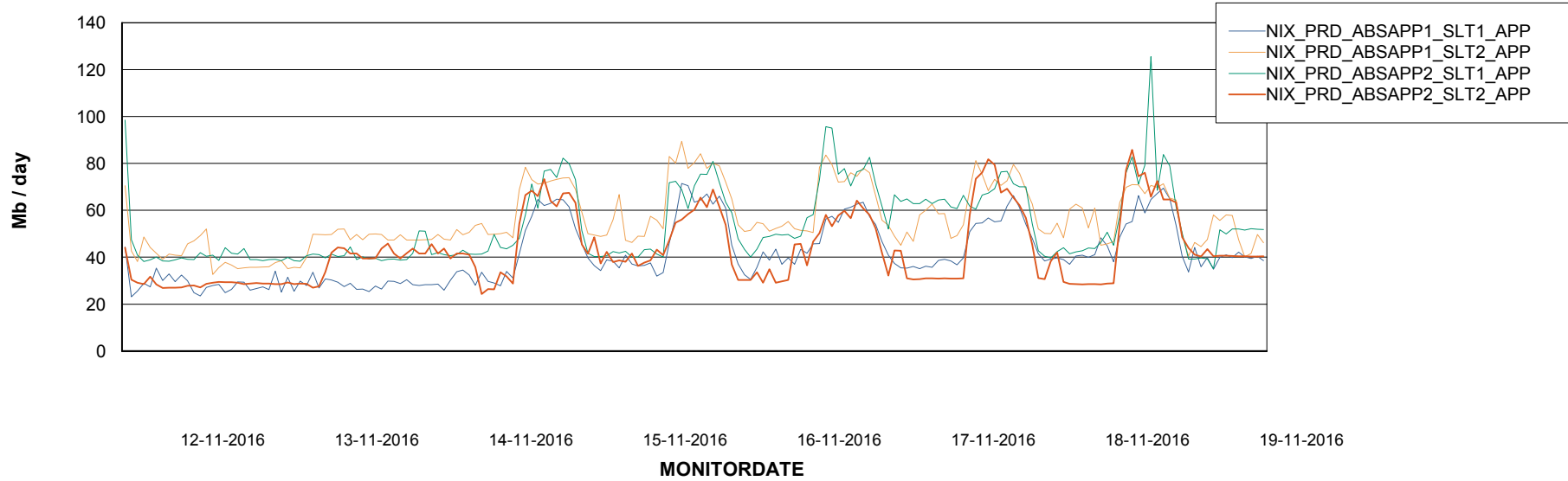
Weekly SLA Customer Report

Customer NIX_Production
Database ID 51



=====
ABSSolute Application Server Services
=====

Avg memory used per ABS Server Service



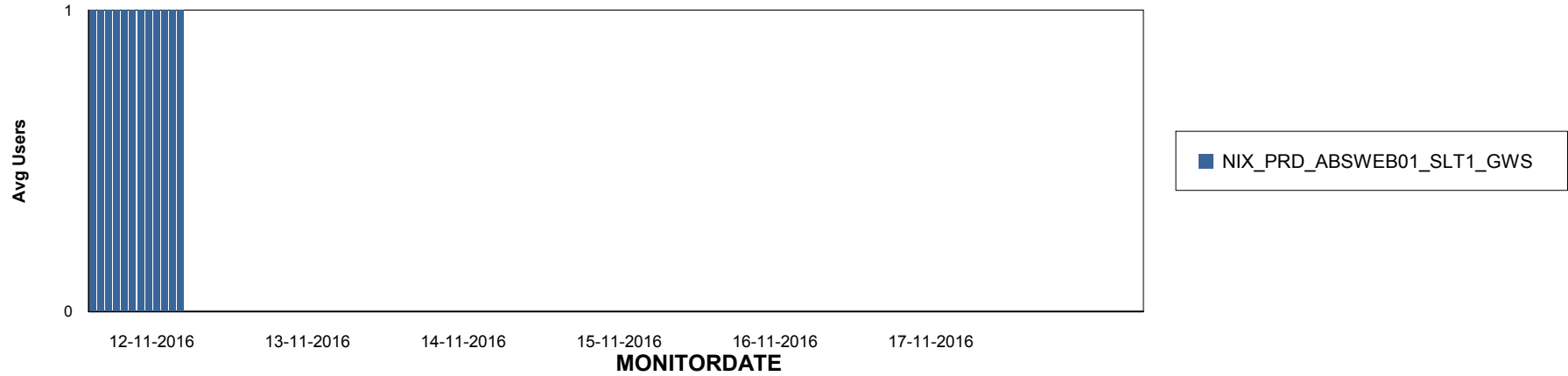
Weekly SLA Customer Report

Customer NIX_Production
Database ID 51

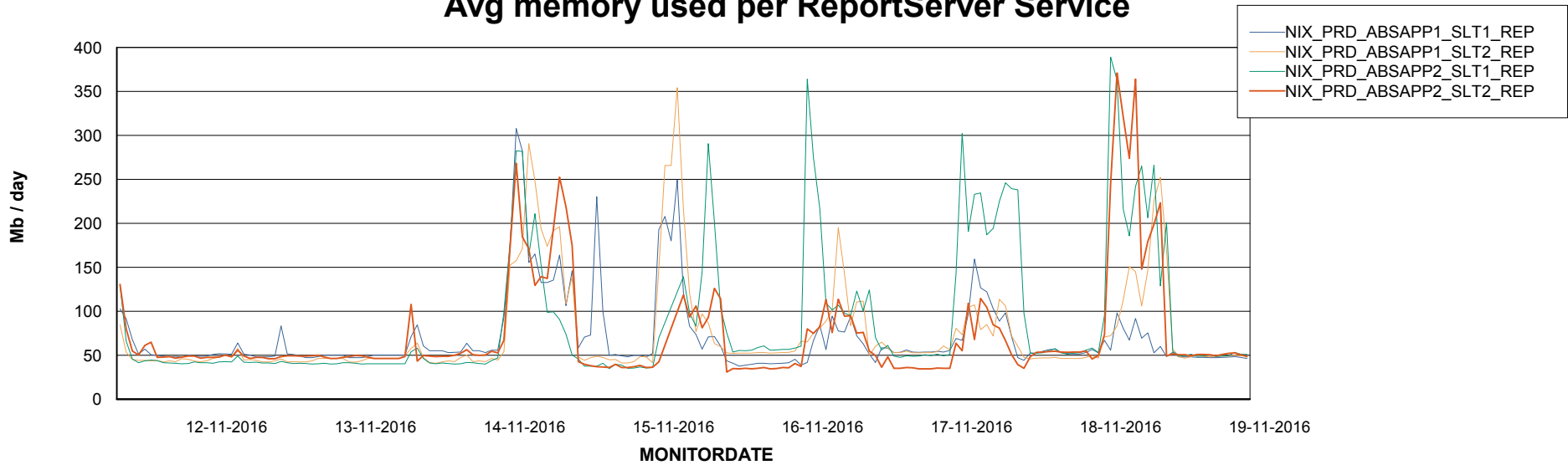


=====
ABSolute Application ReportServer Services
=====

Disaster per ReportServer



Avg memory used per ReportServer Service



Weekly SLA Customer Report

Customer NIX_Production
Database ID 51



Disaster per ABS component

