

## Weekly SLA Customer Report

Customer      CSC\_Production  
 Database ID    50



=====  
 HARDDISK USAGE    CSC\_PRD\_ABSSRV  
 =====

	Total disk space on C (GB)	Free disk space on C (GB)	Total disk space on D (GB)	Free disk space on D (GB)	Total disk space on E (GB)	Free disk space on E (GB)
29-10-2016	102	48	220	130	325	61
28-10-2016	102	48	220	130	325	61
27-10-2016	102	48	220	130	325	61
26-10-2016	102	48	220	130	325	61
25-10-2016	102	48	220	130	325	61
24-10-2016	102	48	220	130	325	61
23-10-2016	102	48	220	130	325	61

=====  
 HARDDISK USAGE    CSC\_PRD\_ABS01  
 =====

	Total disk space on C (GB)	Free disk space on C (GB)	Total disk space on D (GB)	Free disk space on D (GB)	Total disk space on E (GB)	Free disk space on E (GB)
29-10-2016	110	29	210	113	500	191
28-10-2016	110	29	210	113	500	111
27-10-2016	110	29	210	113	500	85
26-10-2016	110	29	210	113	500	42
25-10-2016	110	29	210	113	500	33
24-10-2016	110	29	210	113	500	182
23-10-2016	110	29	210	113	500	307

# Weekly SLA Customer Report

Customer      CSC\_Production  
 Database ID    50



=====  
 HARDDISK USAGE    CSC\_PRD\_ABS02  
 =====

	Total disk space on C (GB)	Free disk space on C (GB)
29-10-2016	80	18
28-10-2016	80	18
27-10-2016	80	18
26-10-2016	80	19
25-10-2016	80	19
24-10-2016	80	19
23-10-2016	80	19

=====  
 HARDDISK USAGE    CSC\_PRD\_SRV-DB-ABS  
 =====

	Total disk space on C (GB)	Free disk space on C (GB)	Total disk space on D (GB)	Free disk space on D (GB)	Total disk space on E (GB)	Free disk space on E (GB)
29-10-2016	145	65	294	26	679	243
28-10-2016	145	65	294	33	679	375
27-10-2016	145	66	294	39	679	325
26-10-2016	145	66	294	39	679	236
25-10-2016	145	66	294	39	679	245
24-10-2016	145	66	294	39	679	222
23-10-2016	145	65	294	39	679	133

# Weekly SLA Customer Report

Customer CSC\_Production  
Database ID 50



HARDDISK USAGE CSC\_PRD\_WEBSRV

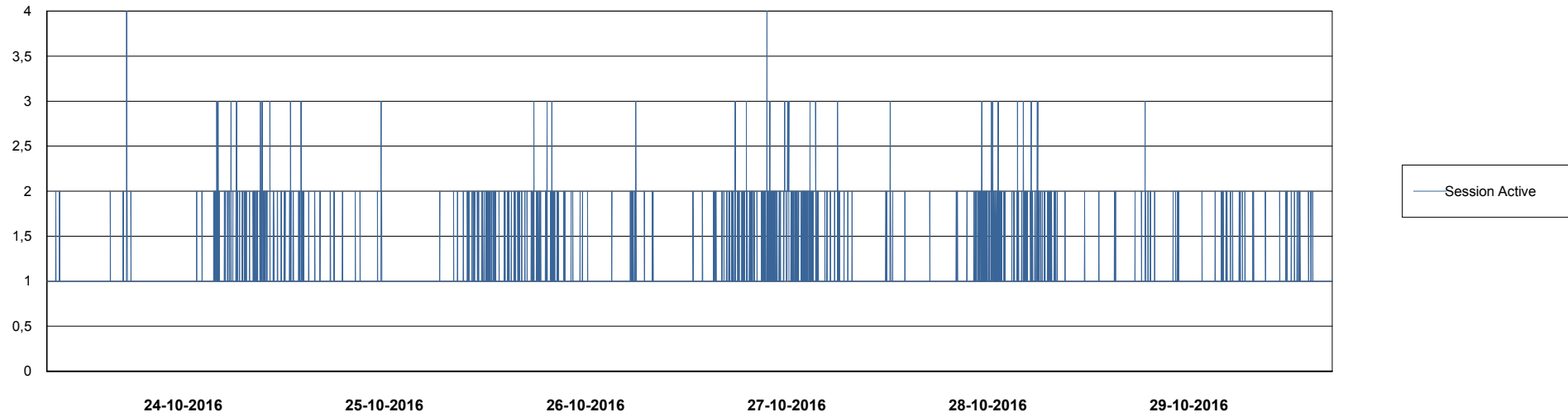
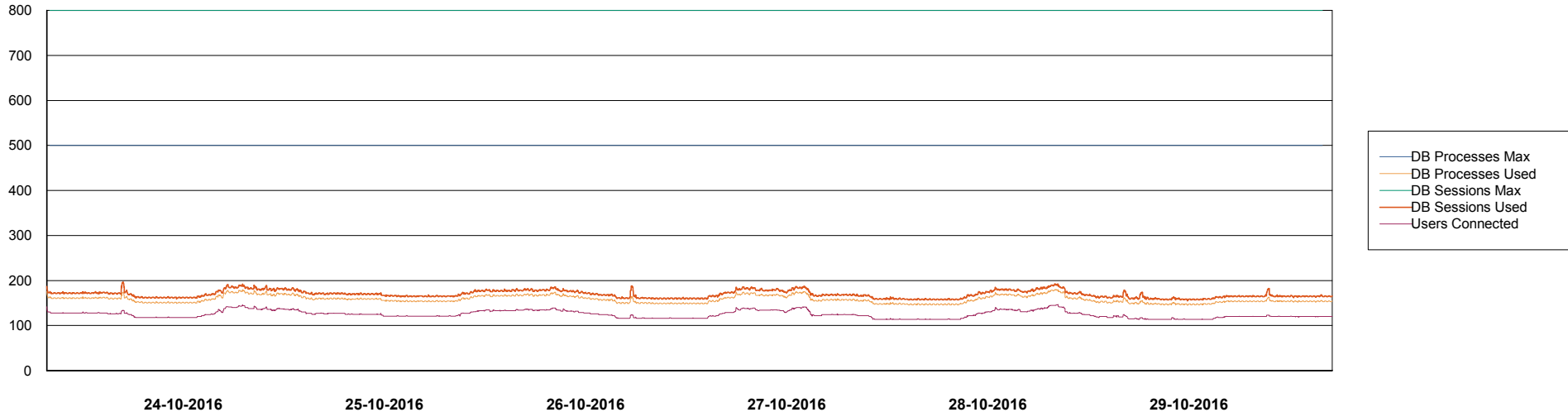
	Used disk space on C (GB)	Total disk space on C (GB)	Free disk space on C (GB)
29-10-2016	39	59	20
28-10-2016	39	59	20
27-10-2016	39	59	20
26-10-2016	39	59	20
25-10-2016	39	59	20
24-10-2016	39	59	20
23-10-2016	39	59	20

# Weekly SLA Customer Report

Customer CSC\_Production  
Database ID 50



## DATABASE PERFORMANCE CSCDB\_Production



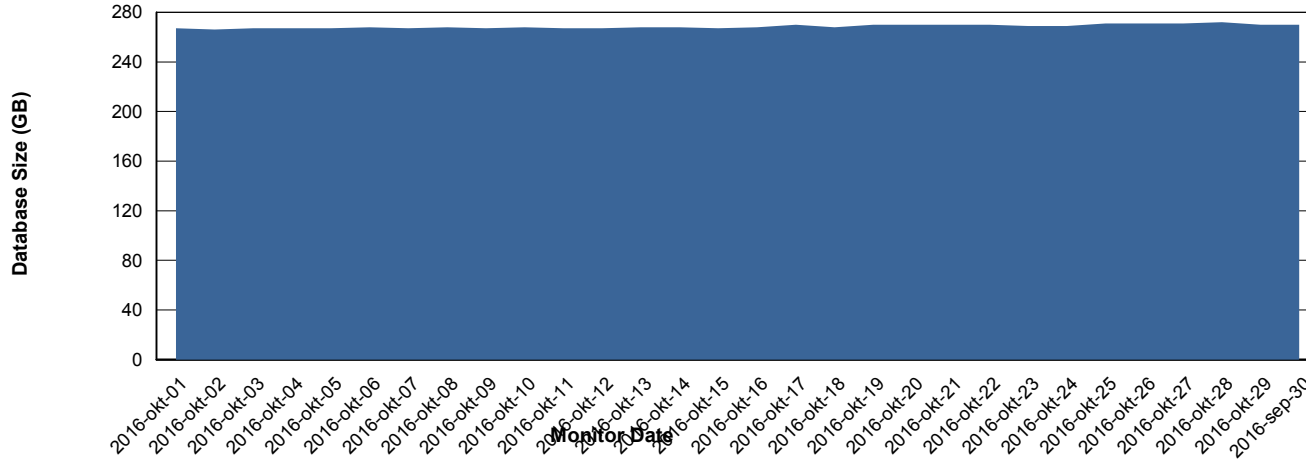
# Weekly SLA Customer Report

Customer CSC\_Production  
 Database ID 50



=====  
 DATABASE SIZE CSCDB\_Production  
 =====

## Database growth over last month



=====  
 DATABASE TABLESPACES CSCDB\_Production  
 =====

### TOTAL DATABASE SIZE PER TABLESPACE

Date	Tablespace Name	Filesize (Gb)	Usedsize (Gb)	Percentage free
29-10-2016	ABSDATA	102	87	15
	INDX	202	178	12
28-10-2016	ABSDATA	102	87	15
	INDX	202	178	12
27-10-2016	ABSDATA	89	86	3
	INDX	187	178	5
26-10-2016	ABSDATA	89	87	2
	INDX	187	178	5
25-10-2016	ABSDATA	89	86	3
	INDX	187	177	5
24-10-2016	ABSDATA	89	86	3
	INDX	187	177	5
23-10-2016	ABSDATA	89	86	3
	INDX	187	177	5



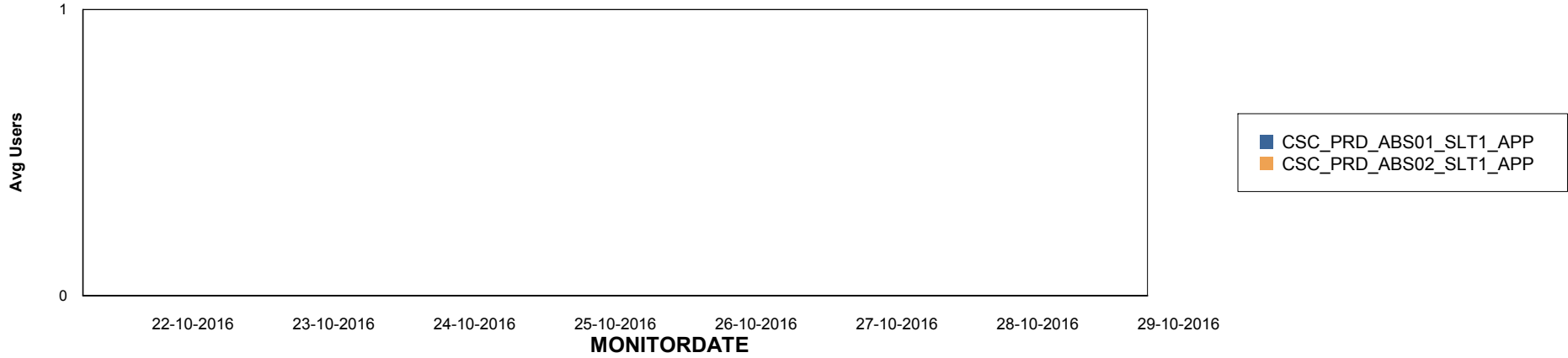
# Weekly SLA Customer Report

Customer CSC\_Production  
Database ID 50

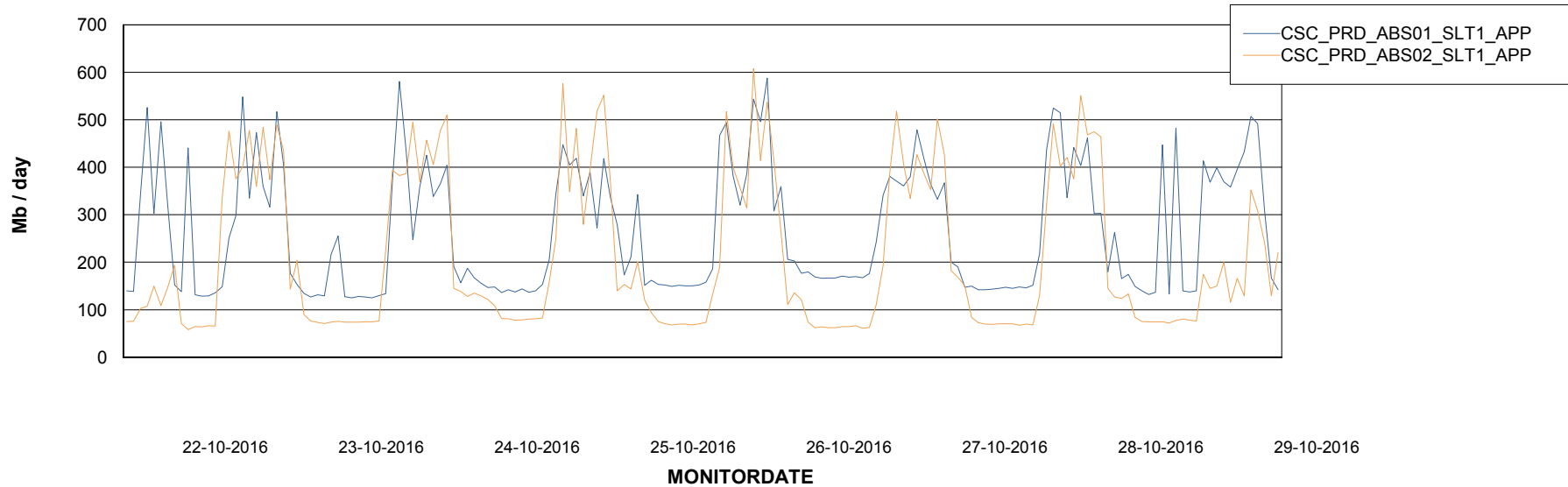


=====  
ABSolute Application Server Services  
=====

## Disaster per ABS Server



## Avg memory used per ABS Server Service



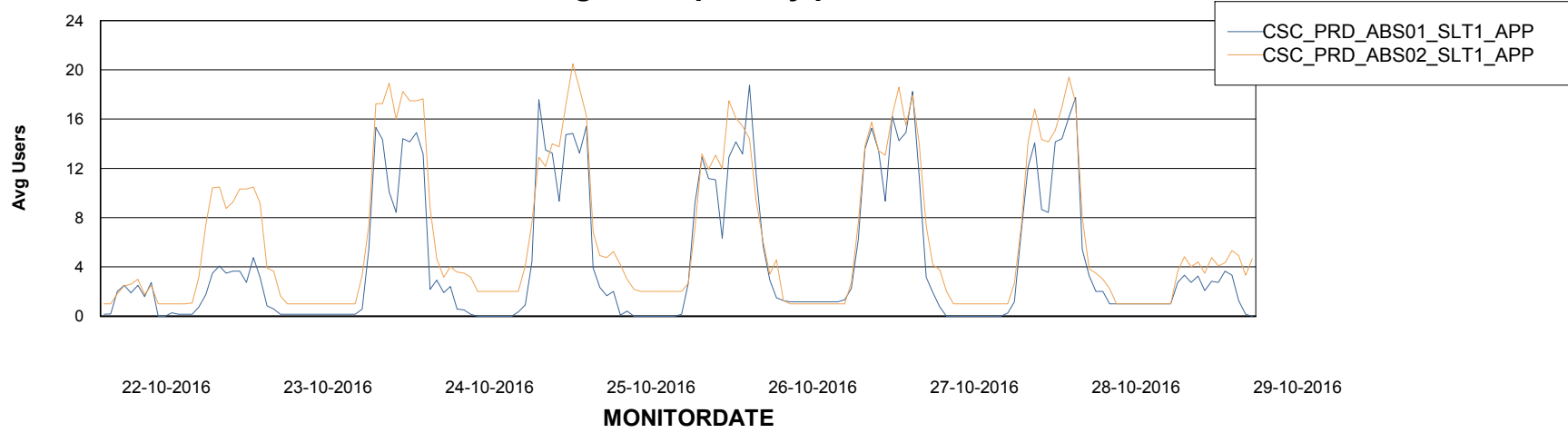
# Weekly SLA Customer Report

Customer CSC\_Production  
Database ID 50



=====  
ABSolute Application Server Services  
=====

### Avg users per day per ABS server



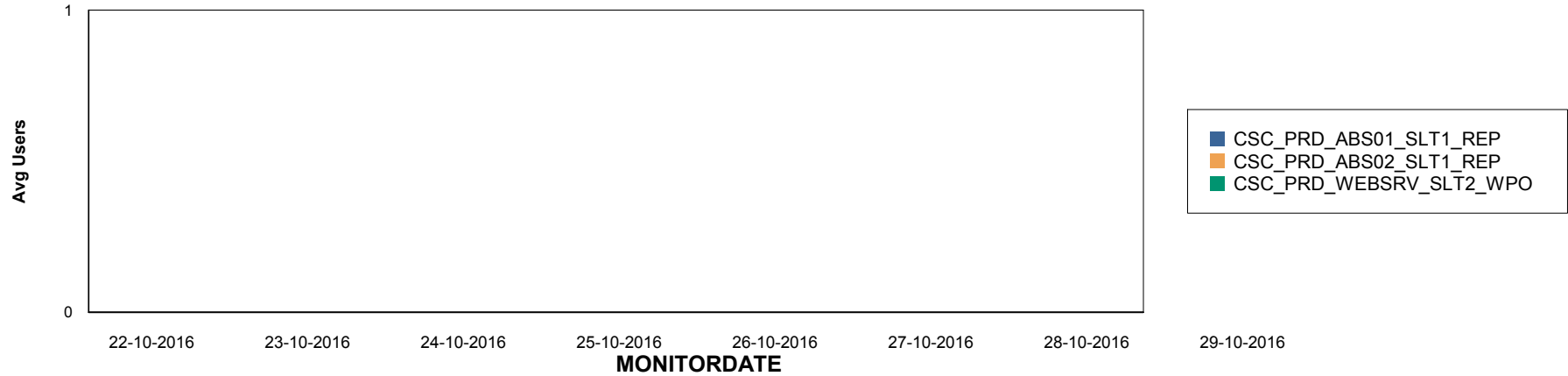
# Weekly SLA Customer Report

Customer CSC\_Production  
Database ID 50

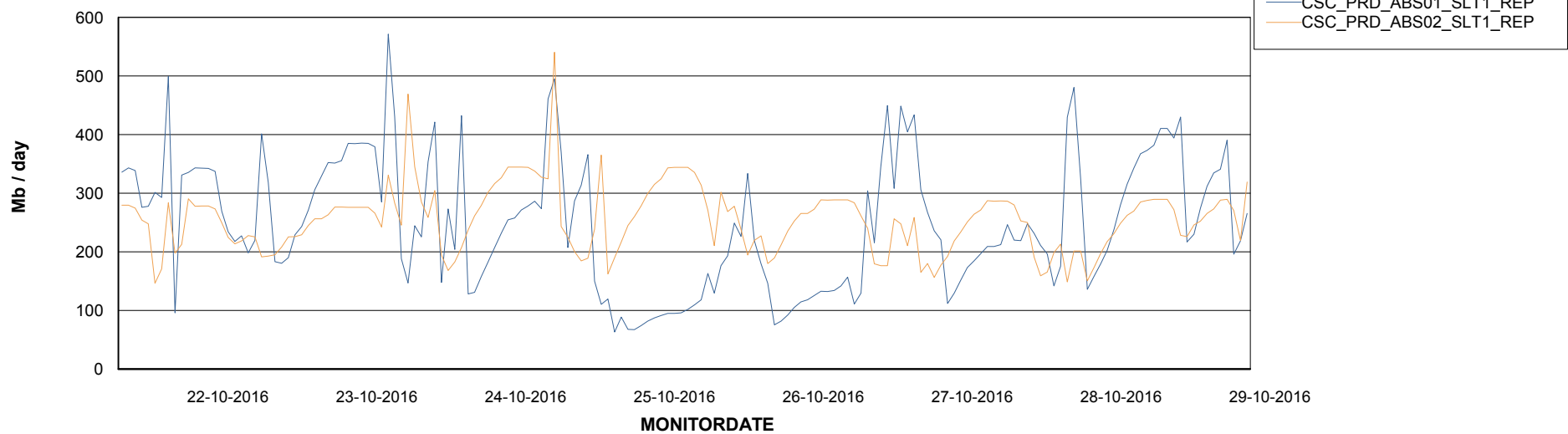


## ABSSolute Application ReportServer Services

### Disaster per ReportServer



### Avg memory used per ReportServer Service



# Weekly SLA Customer Report

Customer CSC\_Production  
Database ID 50



## Disaster per ABS component

