

Weekly SLA Customer Report

Customer FIS_Production
 Database ID 46



=====
 HARDDISK USAGE FIS_PRD_ORACLE1
 =====

| | Total disk space on C (GB) | Free disk space on C (GB) | Total disk space on L (GB) | Free disk space on L (GB) | Total disk space on O (GB) | Free disk space on O (GB) |
|------------|----------------------------|---------------------------|----------------------------|---------------------------|----------------------------|---------------------------|
| 22-10-2016 | 279 | 222 | 279 | 95 | 373 | 179 |
| 21-10-2016 | 279 | 222 | 279 | 116 | 373 | 179 |
| 20-10-2016 | 279 | 222 | 279 | 114 | 373 | 179 |
| 19-10-2016 | 279 | 222 | 279 | 115 | 373 | 179 |
| 18-10-2016 | 279 | 222 | 279 | 113 | 373 | 179 |
| 17-10-2016 | 279 | 222 | 279 | 113 | 373 | 179 |
| 16-10-2016 | 279 | 222 | 279 | 114 | 373 | 179 |

=====
 HARDDISK USAGE FIS_PRD_ORACLE2
 =====

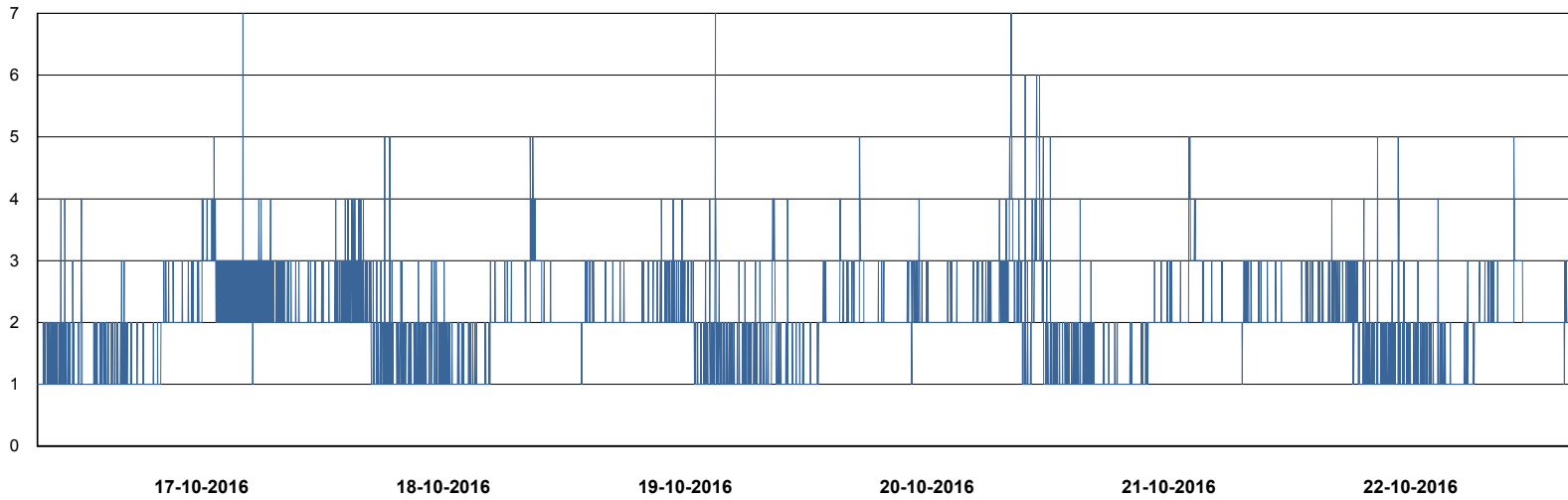
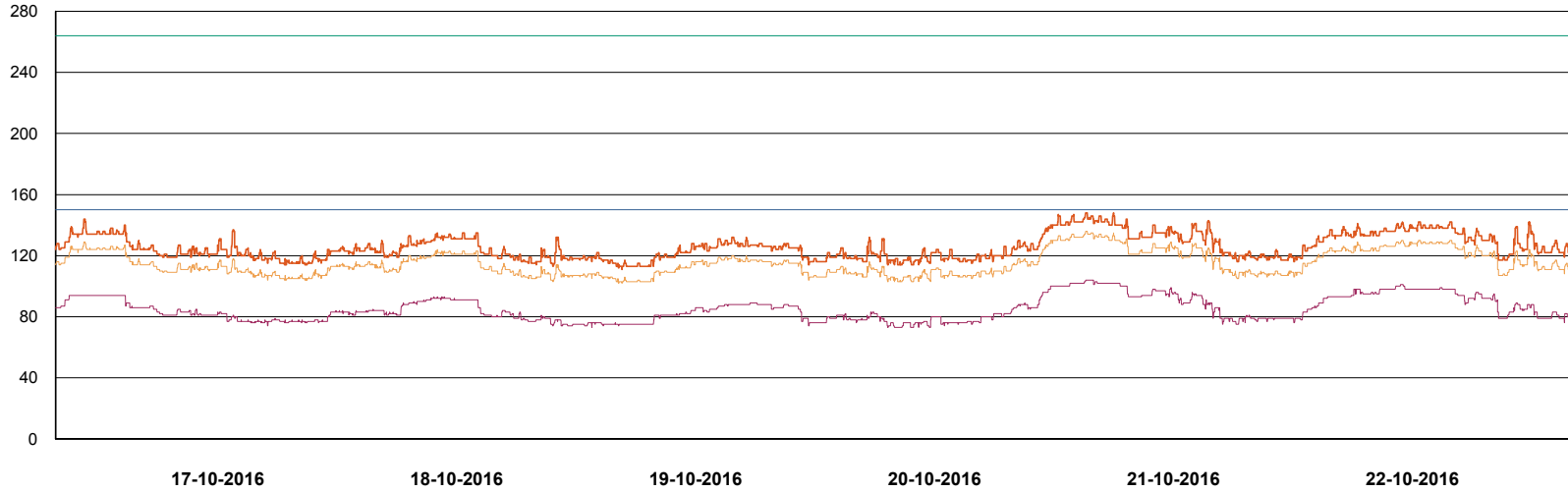
| | Total disk space on C (GB) | Free disk space on C (GB) | Total disk space on L (GB) | Free disk space on L (GB) | Total disk space on O (GB) | Free disk space on O (GB) |
|------------|----------------------------|---------------------------|----------------------------|---------------------------|----------------------------|---------------------------|
| 22-10-2016 | 279 | 219 | 279 | 67 | 373 | 122 |
| 21-10-2016 | 279 | 219 | 279 | 67 | 373 | 122 |
| 20-10-2016 | 279 | 219 | 279 | 72 | 373 | 122 |
| 19-10-2016 | 279 | 219 | 279 | 76 | 373 | 122 |
| 18-10-2016 | 279 | 219 | 279 | 76 | 373 | 122 |
| 17-10-2016 | 279 | 219 | 279 | 75 | 373 | 122 |
| 16-10-2016 | 279 | 219 | 279 | 75 | 373 | 122 |

Weekly SLA Customer Report

Customer FIS_Production
Database ID 46



DATABASE PERFORMANCE FISDB_Production

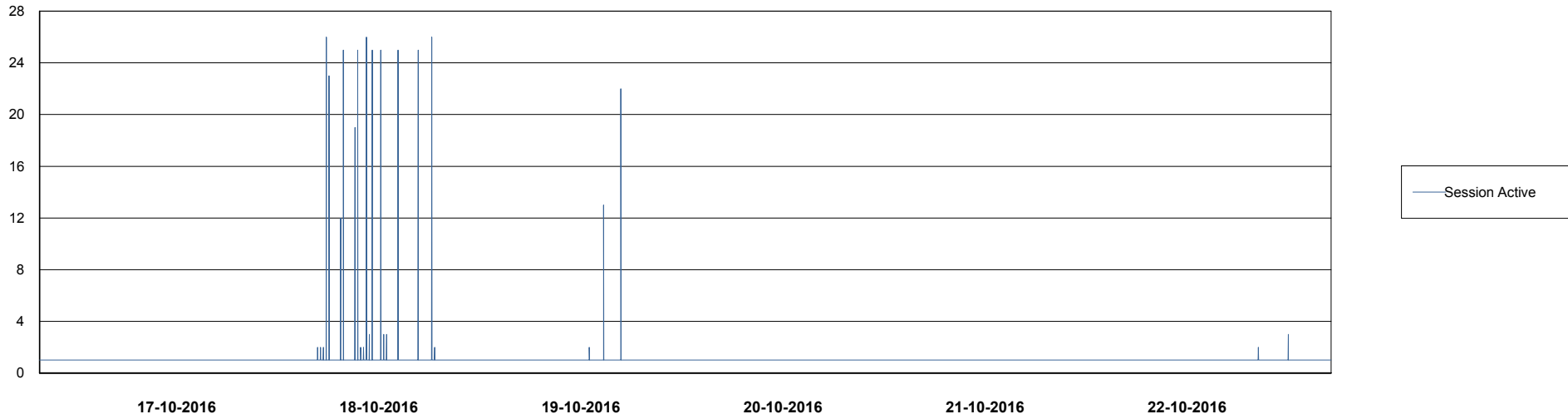
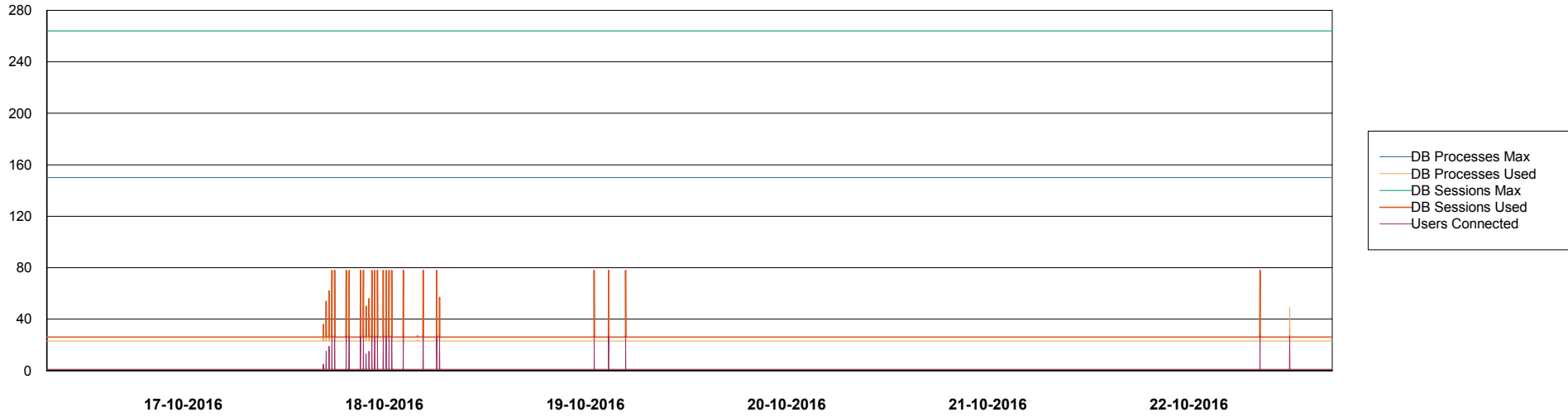


Weekly SLA Customer Report

Customer FIS_Production
Database ID 46



DATABASE PERFORMANCE FISDB_Standby



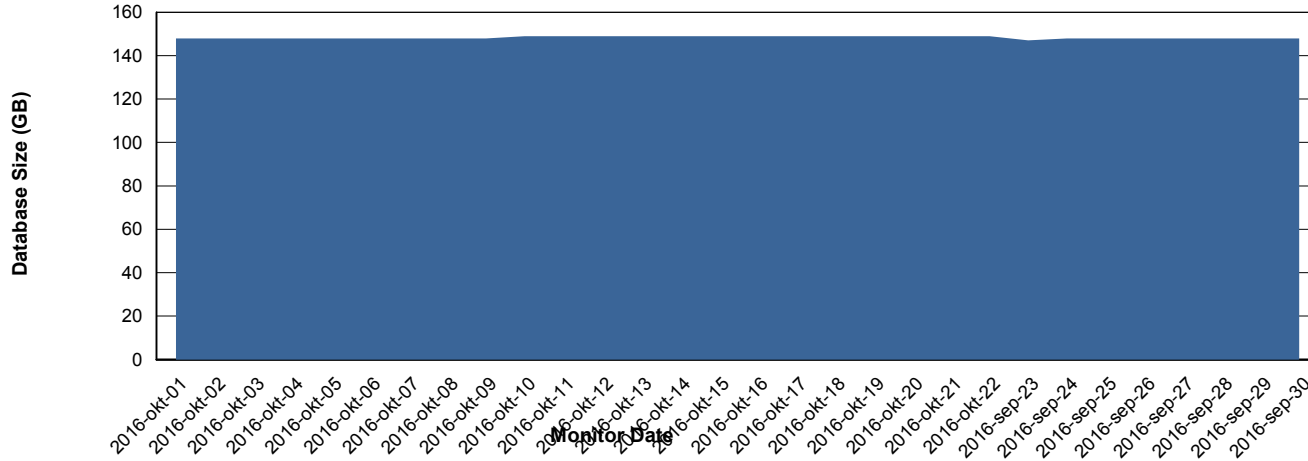
Weekly SLA Customer Report

Customer FIS_Production
 Database ID 46



=====
 DATABASE SIZE FISDB_Production
 =====

Database growth over last month



=====
 DATABASE TABLESPACES FISDB_Production
 =====

TOTAL DATABASE SIZE PER TABLESPACE

| Date | Tablespace Name | Filesize (Gb) | Usedsize (Gb) | Percentage free |
|------------|-----------------|---------------|---------------|-----------------|
| 22-10-2016 | ABSDATA | 78 | 65 | 17 |
| | INDX | 98 | 80 | 18 |
| 21-10-2016 | ABSDATA | 78 | 65 | 17 |
| | INDX | 98 | 80 | 18 |
| 20-10-2016 | ABSDATA | 78 | 65 | 17 |
| | INDX | 98 | 80 | 18 |
| 19-10-2016 | ABSDATA | 78 | 65 | 17 |
| | INDX | 98 | 80 | 18 |
| 18-10-2016 | ABSDATA | 78 | 65 | 17 |
| | INDX | 98 | 80 | 18 |
| 17-10-2016 | ABSDATA | 78 | 65 | 17 |
| | INDX | 98 | 80 | 18 |
| 16-10-2016 | ABSDATA | 78 | 65 | 17 |
| | INDX | 98 | 80 | 18 |

Weekly SLA Customer Report

Customer FIS_Production
Database ID 46



=====
STANDBY DATABASE HEALTH FIS_Production
=====

Recovery lag for last 7 days

