

# Weekly SLA Customer Report

Customer NIX\_Production  
 Database ID 51



=====  
 HARDDISK USAGE NIX\_PRD\_ABSAPP2  
 =====

	Total disk space on C (GB)	Free disk space on C (GB)
24-9-2016	200	163
23-9-2016	200	163
22-9-2016	200	163
21-9-2016	200	163
20-9-2016	200	163
19-9-2016	200	163
18-9-2016	200	163

=====  
 HARDDISK USAGE NIX\_PRD\_ABSWEB01  
 =====

	Total disk space on C (GB)	Free disk space on C (GB)
24-9-2016	300	276
23-9-2016	300	276
22-9-2016	300	277
21-9-2016	300	277
20-9-2016	300	277
19-9-2016	300	277
18-9-2016	300	277

## Weekly SLA Customer Report

Customer      NIX\_Production  
 Database ID    51



=====  
 HARDDISK USAGE    NIX\_PRD\_ORACLE\_B11  
 =====

	Total disk space on C (GB)	Free disk space on C (GB)	Total disk space on E (GB)	Free disk space on E (GB)	Total disk space on F (GB)	Free disk space on F (GB)	Total disk space on G (GB)	Free disk space on G (GB)
24-9-2016	279	37	558	280	279	228	558	319
23-9-2016	279	45	558	280	279	228	558	303
22-9-2016	279	47	558	280	279	228	558	306
21-9-2016	279	47	558	280	279	228	558	311
20-9-2016	279	47	558	279	279	228	558	315
19-9-2016	279	47	558	279	279	228	558	320
18-9-2016	279	47	558	280	279	228	558	326

=====  
 HARDDISK USAGE    NIX\_PRD\_ORCDB1  
 =====

	Total disk space on C (GB)	Free disk space on C (GB)	Total disk space on E (GB)	Free disk space on E (GB)	Total disk space on F (GB)	Free disk space on F (GB)	Total disk space on G (GB)	Free disk space on G (GB)
24-9-2016	279	163	558	463	558	457	279	131
23-9-2016	279	163	558	463	558	457	279	133
22-9-2016	279	163	558	463	558	457	279	135
21-9-2016	279	163	558	463	558	457	279	137
20-9-2016	279	163	558	463	558	457	279	140
19-9-2016	279	163	558	463	558	457	279	142
18-9-2016	279	163	558	463	558	457	279	144

## Weekly SLA Customer Report

Customer      NIX\_Production  
 Database ID    51



=====  
 HARDDISK USAGE    NIX\_PRD\_ORCDB2  
 =====

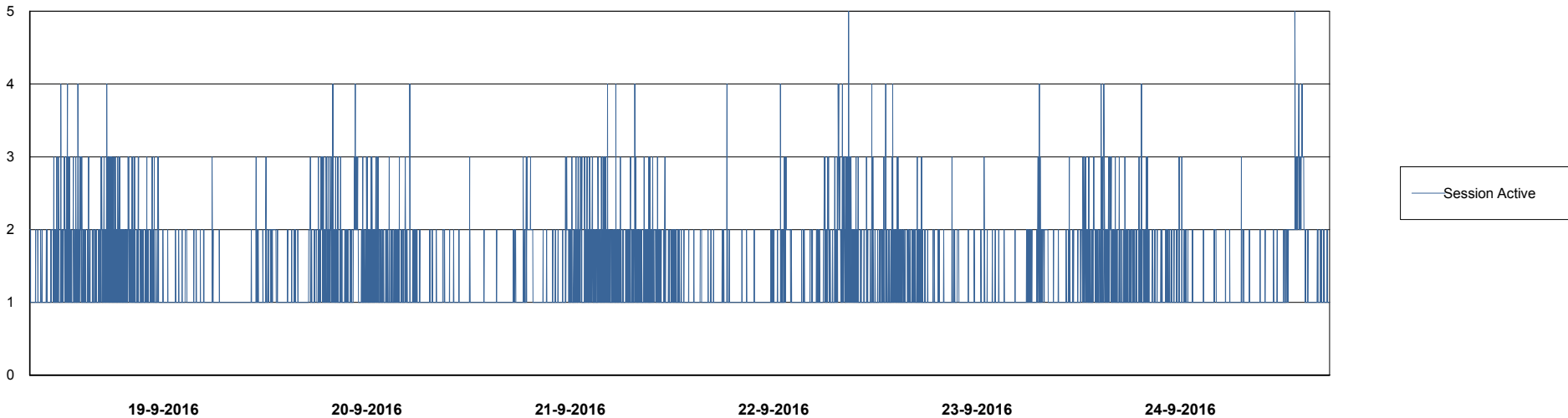
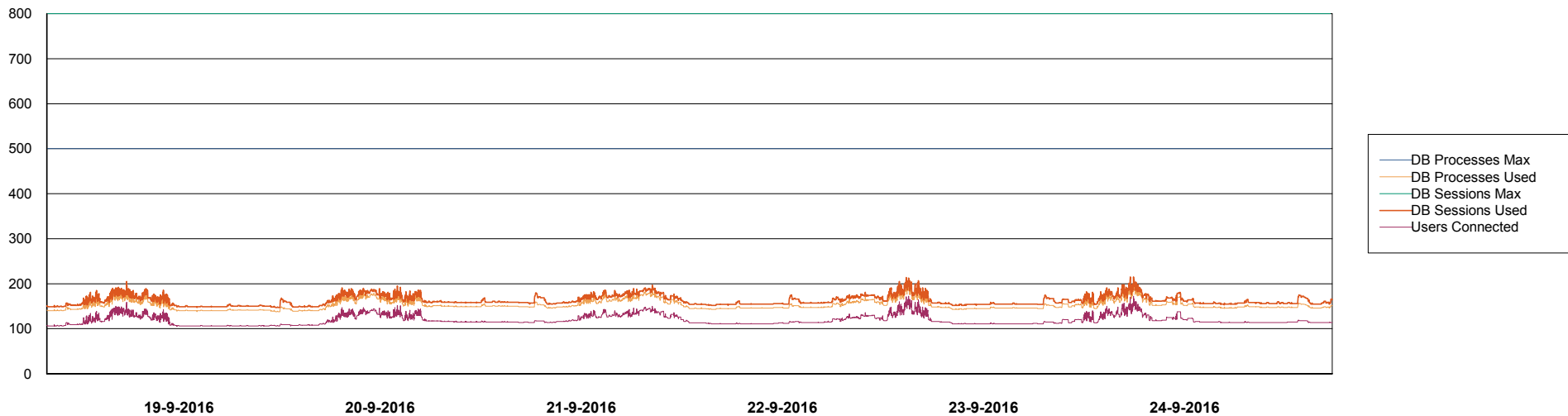
	Total disk space on C (GB)	Free disk space on C (GB)	Total disk space on E (GB)	Free disk space on E (GB)	Total disk space on F (GB)	Free disk space on F (GB)	Total disk space on G (GB)	Free disk space on G (GB)
24-9-2016	279	163	558	463	558	457	279	131
23-9-2016	279	163	558	463	558	457	279	133
22-9-2016	279	163	558	463	558	457	279	135
21-9-2016	279	163	558	463	558	457	279	137
20-9-2016	279	163	558	463	558	457	279	140
19-9-2016	279	163	558	463	558	457	279	142
18-9-2016	279	163	558	463	558	457	279	144

# Weekly SLA Customer Report

Customer NIX\_Production  
Database ID 51



DATABASE PERFORMANCE NIXDB\_Production

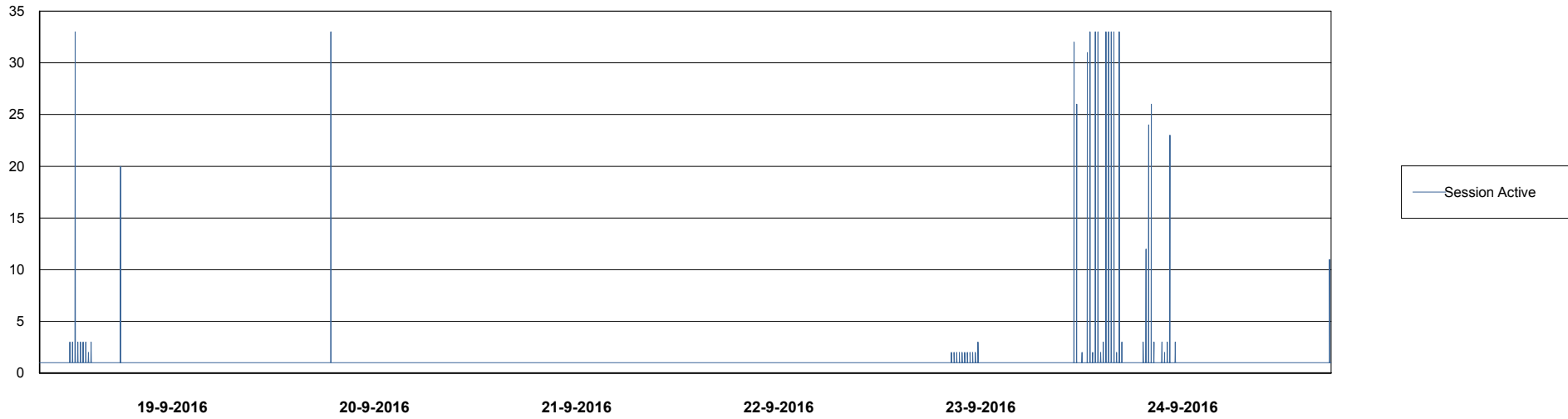
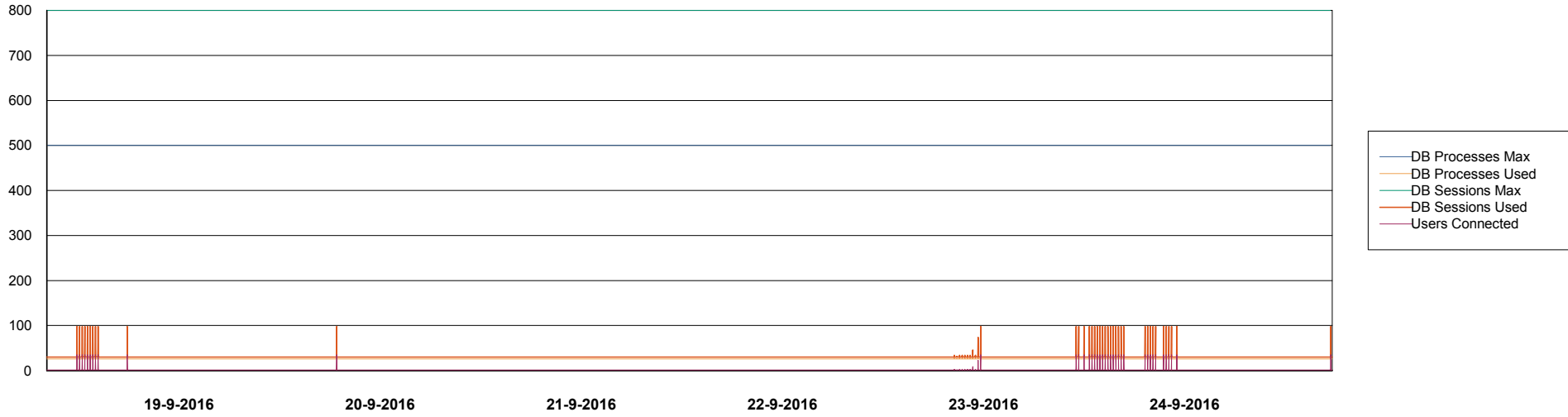


# Weekly SLA Customer Report

Customer NIX\_Production  
Database ID 51



DATABASE PERFORMANCE NIXDB\_Standby



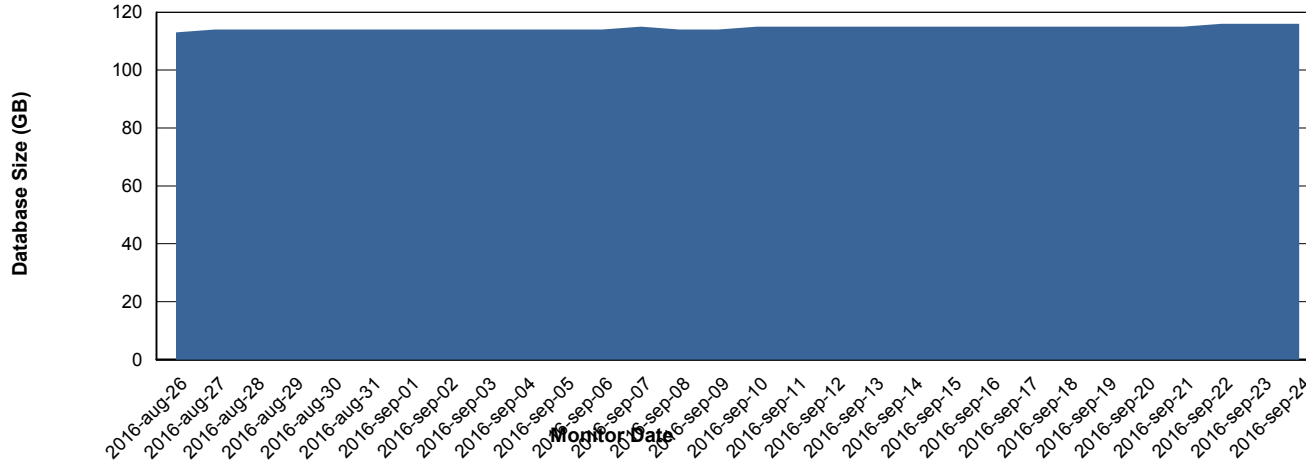
# Weekly SLA Customer Report

Customer NIX\_Production  
 Database ID 51



=====  
 DATABASE SIZE NIXDB\_Production  
 =====

## Database growth over last month



=====  
 DATABASE TABLESPACES NIXDB\_Production  
 =====

### TOTAL DATABASE SIZE PER TABLESPACE

Date	Tablespace Name	Filesize (Gb)	Usedsize (Gb)	Percentage free
24-9-2016	ABSDATA	50	43	14
	INDX	100	72	28
23-9-2016	ABSDATA	50	43	14
	INDX	100	72	28
22-9-2016	ABSDATA	50	43	14
	INDX	100	72	28
21-9-2016	ABSDATA	50	43	14
	INDX	100	72	28
20-9-2016	ABSDATA	50	43	14
	INDX	100	72	28
19-9-2016	ABSDATA	50	42	16
	INDX	100	71	29
18-9-2016	ABSDATA	50	42	16
	INDX	100	71	29

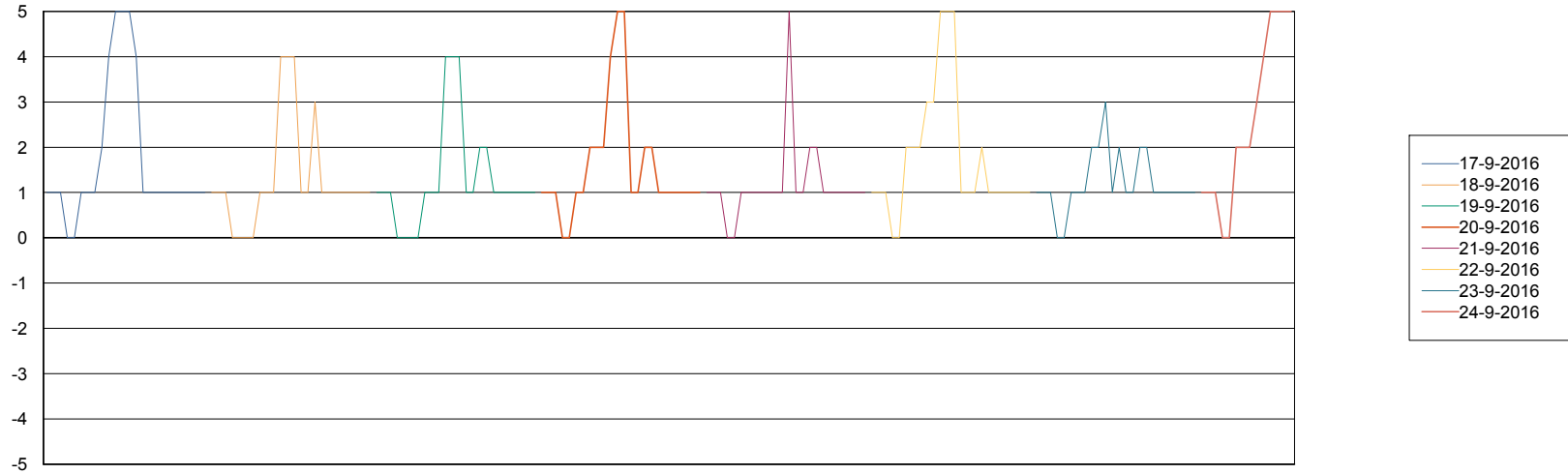
# Weekly SLA Customer Report

Customer NIX\_Production  
Database ID 51



=====  
STANDBY DATABASE HEALTH NIX\_Production  
=====

### Recovery lag for last 7 days



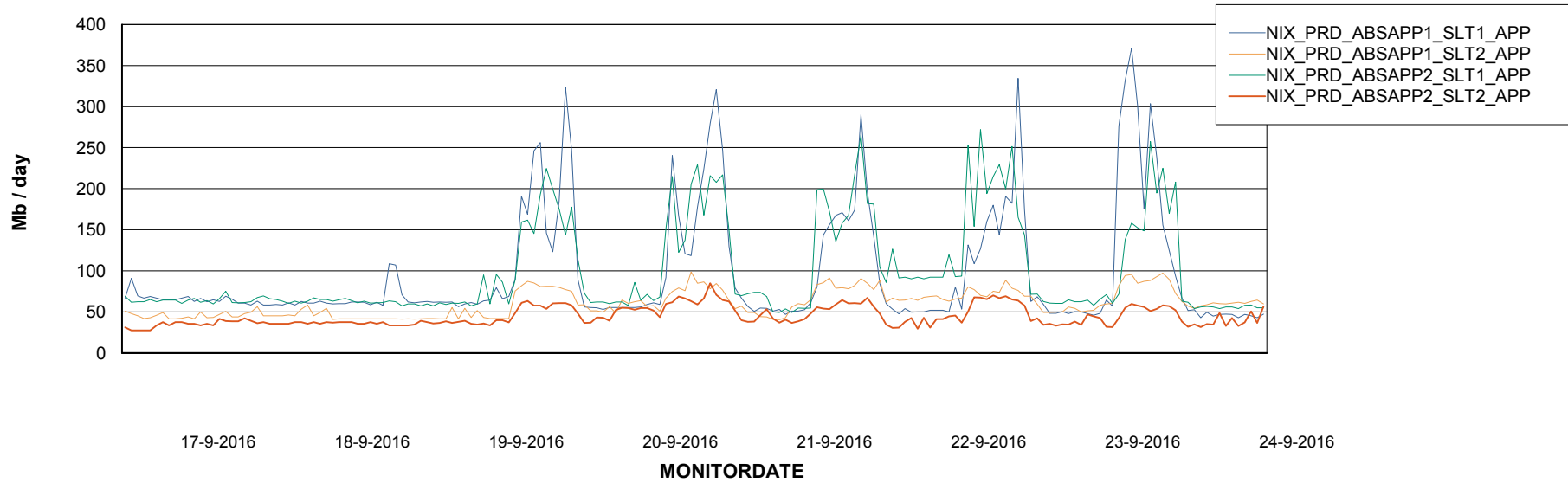
# Weekly SLA Customer Report

Customer NIX\_Production  
Database ID 51



=====  
ABSolute Application Server Services  
=====

### Avg memory used per ABS Server Service



# Weekly SLA Customer Report

Customer NIX\_Production  
Database ID 51



=====  
ABSolute Application ReportServer Services  
=====

### Avg memory used per ReportServer Service

