

## Weekly SLA Customer Report

Customer AUJ\_Production  
 Database ID 41



=====  
 HARDDISK USAGE AUJ\_PRD\_ABS\_APP1  
 =====

	Used disk space on \$1 (GB)	Total disk space on \$1 (GB)	Free disk space on \$1 (GB)
9-9-2016	137	241	92
8-9-2016	137	241	92
7-9-2016	137	241	92
6-9-2016	137	241	92
5-9-2016	137	241	92
4-9-2016	137	241	92
3-9-2016	137	241	92

=====  
 HARDDISK USAGE AUJ\_PRD\_ABS\_APP2  
 =====

	Used disk space on \$1 (GB)	Total disk space on \$1 (GB)	Free disk space on \$1 (GB)
9-9-2016	178	241	51
8-9-2016	178	241	51
7-9-2016	178	241	51
6-9-2016	178	241	51
5-9-2016	177	241	52
4-9-2016	177	241	52
3-9-2016	177	241	52

## Weekly SLA Customer Report

Customer     AUJ\_Production  
 Database ID    41



=====  
 HARDDISK USAGE    AUJ\_PRD\_ABS\_APP3  
 =====

	Used disk space on \$1 (GB)	Total disk space on \$1 (GB)	Free disk space on \$1 (GB)
9-9-2016	18	247	216
8-9-2016	18	247	216
7-9-2016	18	247	216
6-9-2016	18	247	216
5-9-2016	18	247	216
4-9-2016	18	247	216
3-9-2016	18	247	216

=====  
 HARDDISK USAGE    AUJ\_PRD\_ORACLE\_BI1  
 =====

	Used disk space on \$1 (GB)	Total disk space on \$1 (GB)	Free disk space on \$1 (GB)
9-9-2016	419	526	80
8-9-2016	419	526	80
7-9-2016	419	526	80
6-9-2016	418	526	80
5-9-2016	418	526	81
4-9-2016	421	526	77
3-9-2016	422	526	76

## Weekly SLA Customer Report

Customer AUJ\_Production  
 Database ID 41



=====  
 HARDDISK USAGE AUJ\_PRD\_ORACLE1  
 =====

	Used disk space on \$1 (GB)	Total disk space on \$1 (GB)	Free disk space on \$1 (GB)	Used disk space on /abs2 (GB)	Used disk space on /bk (GB)
9-9-2016	70	290	67	256	840
8-9-2016	70	290	67	256	852
7-9-2016	70	290	67	255	852
6-9-2016	70	290	67	254	851
5-9-2016	70	290	67	254	850
4-9-2016	70	290	67	254	846
3-9-2016	70	290	67	254	846

=====  
 HARDDISK USAGE AUJ\_PRD\_ORACLE2  
 =====

	Used disk space on \$1 (GB)	Total disk space on \$1 (GB)	Free disk space on \$1 (GB)	Used disk space on /abs2 (GB)	Used disk space on /bk (GB)
9-9-2016	43	300	97	256	591
8-9-2016	43	290	97	256	593
7-9-2016	43	290	97	255	594
6-9-2016	43	290	97	254	589
5-9-2016	43	289	97	254	582
4-9-2016	43	289	97	254	583
3-9-2016	43	290	97	254	588

# Weekly SLA Customer Report

Customer AUJ\_Production  
Database ID 41



HARDDISK USAGE AUJ\_PRD\_ORACLE3

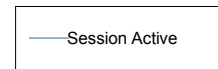
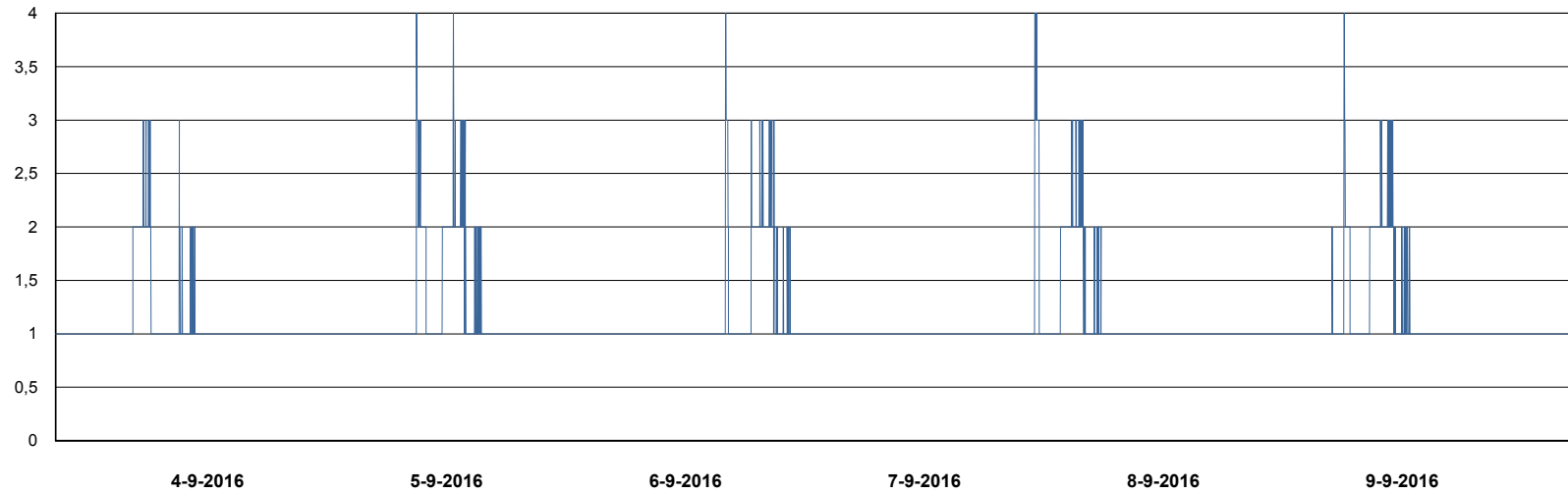
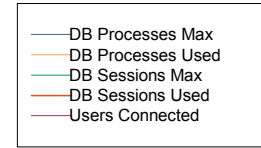
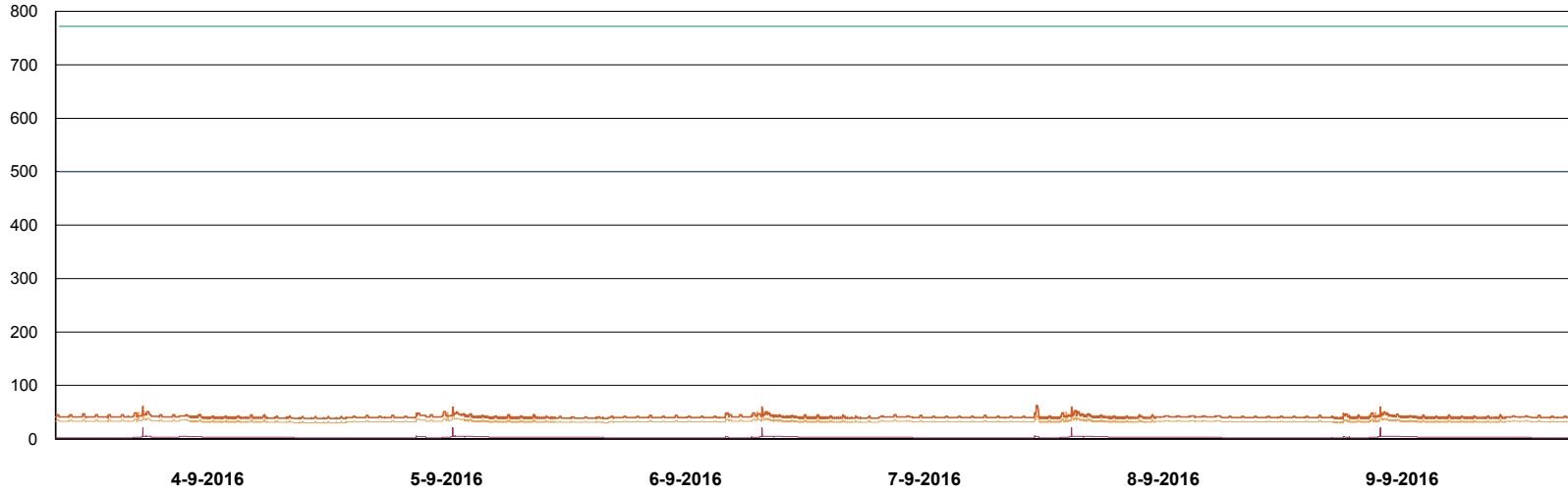
	Used disk space on \$1 (GB)	Total disk space on \$1 (GB)	Free disk space on \$1 (GB)
9-9-2016	18	247	216
8-9-2016	18	247	216
7-9-2016	18	247	216
6-9-2016	18	247	216
5-9-2016	18	247	216
4-9-2016	18	247	216
3-9-2016	18	247	216

# Weekly SLA Customer Report

Customer AUJ\_Production  
Database ID 41



DATABASE PERFORMANCE AUJDB\_BI

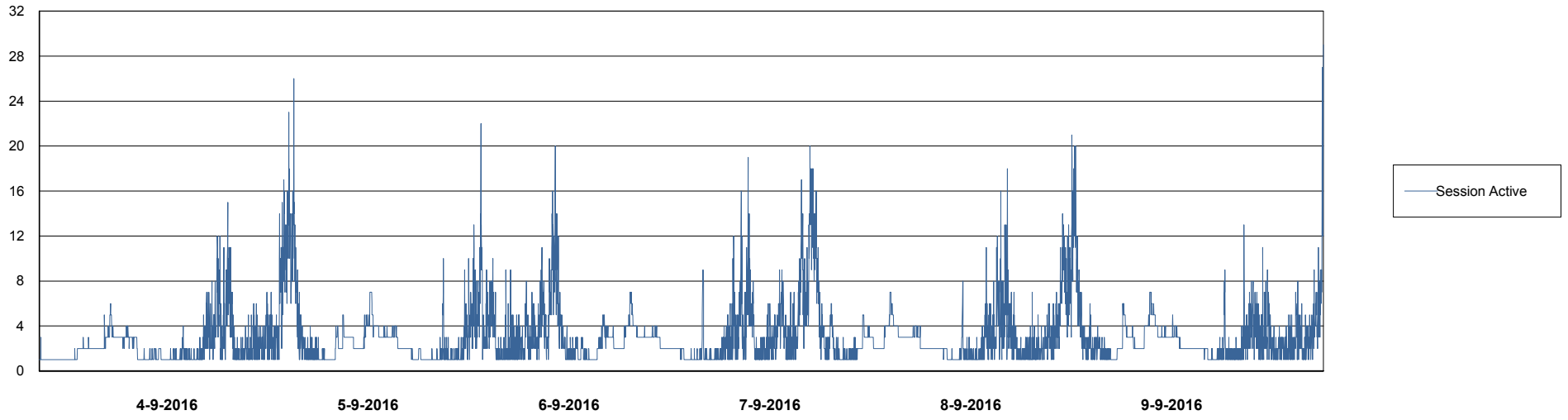
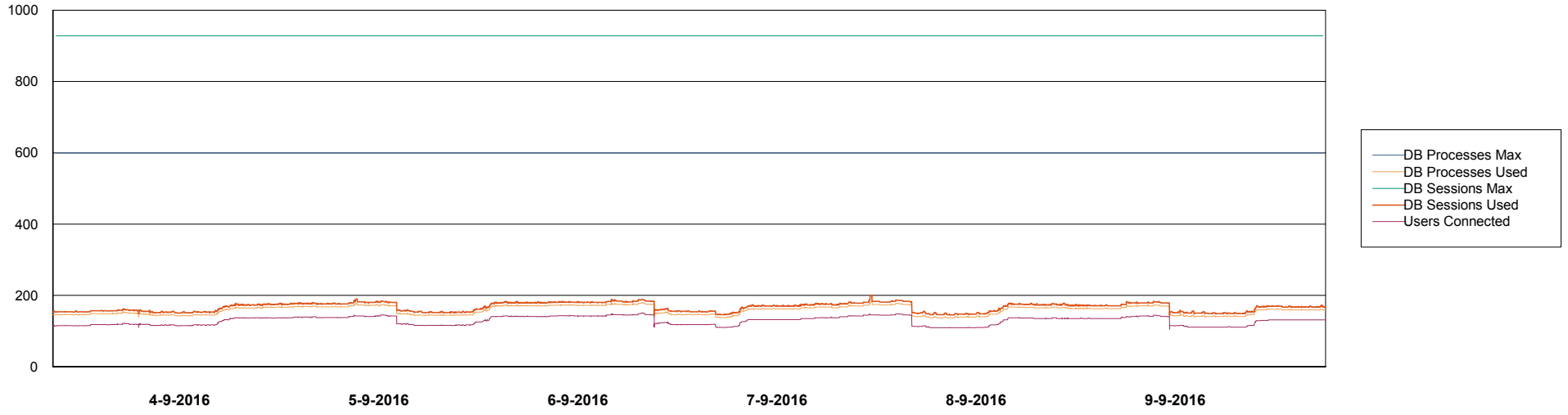


# Weekly SLA Customer Report

Customer AUJ\_Production  
Database ID 41



## DATABASE PERFORMANCE AUJDB\_Production

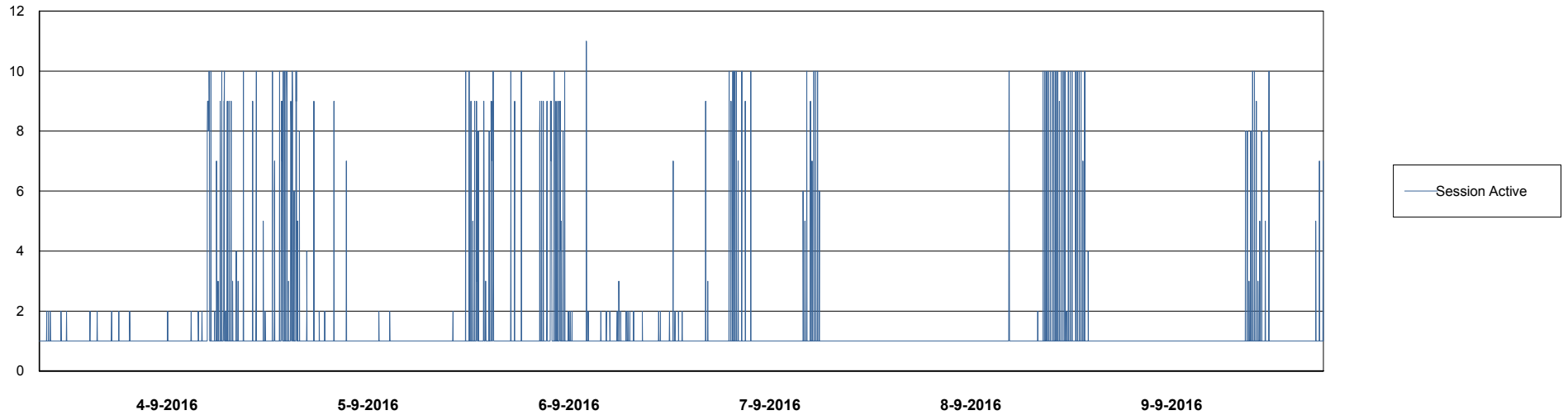
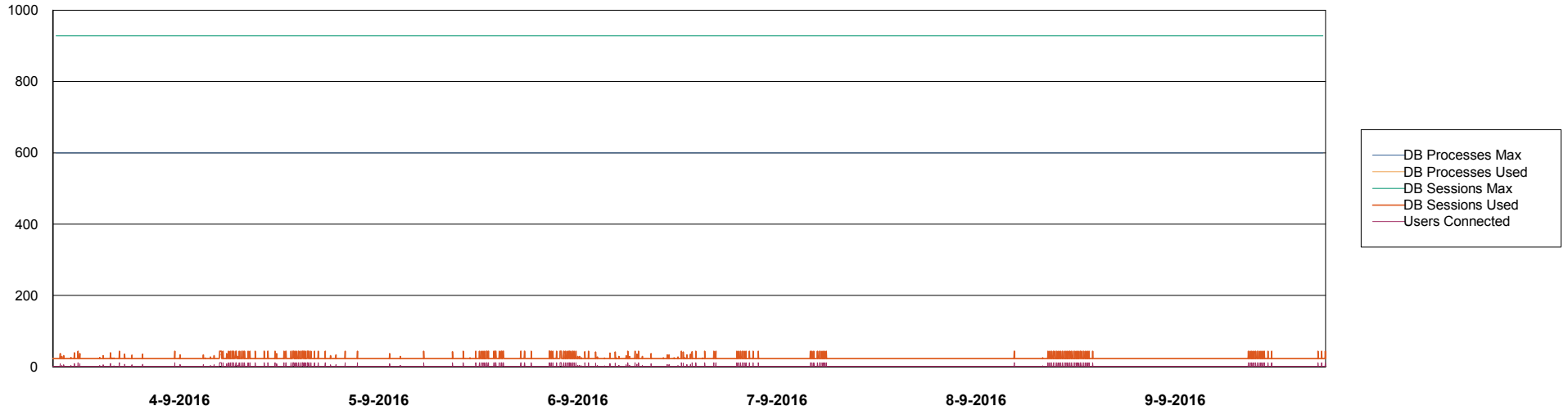


# Weekly SLA Customer Report

Customer AUJ\_Production  
Database ID 41



## DATABASE PERFORMANCE AUJDB\_Standby

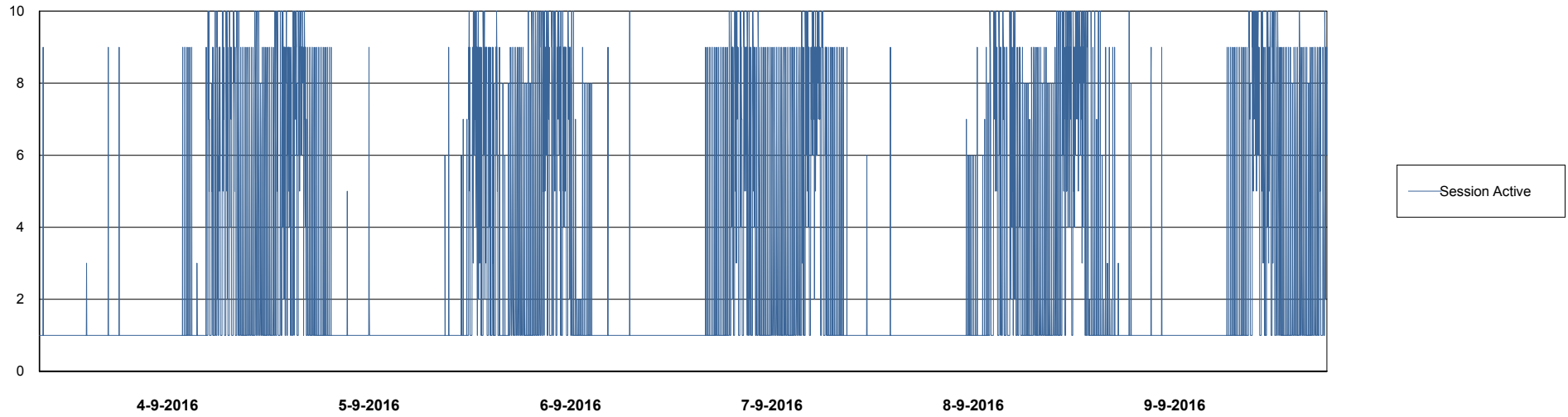
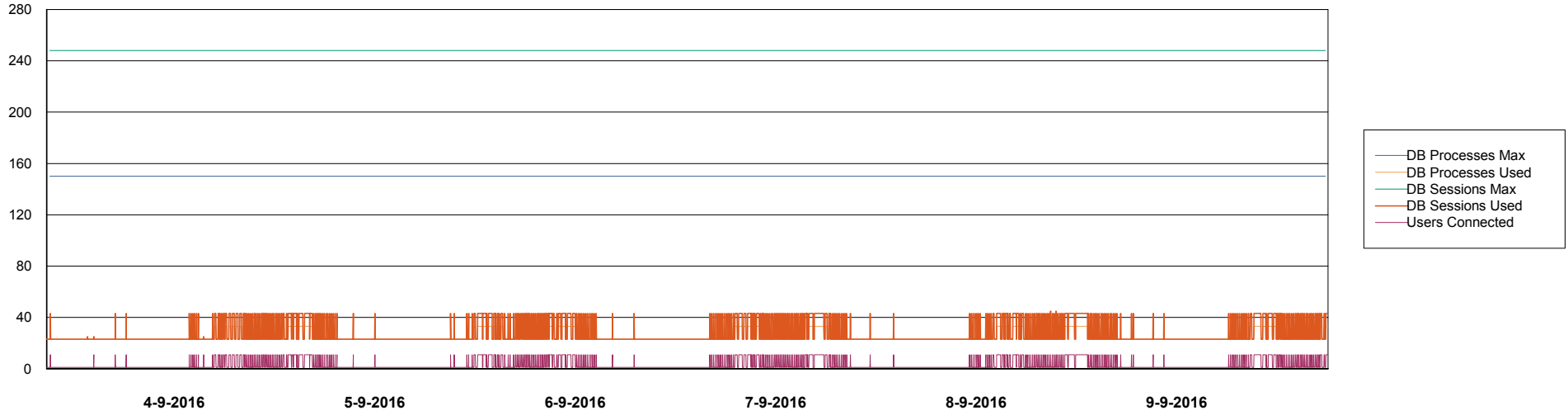


# Weekly SLA Customer Report

Customer AUJ\_Production  
Database ID 41



DATABASE PERFORMANCE AUJDB3\_Standby



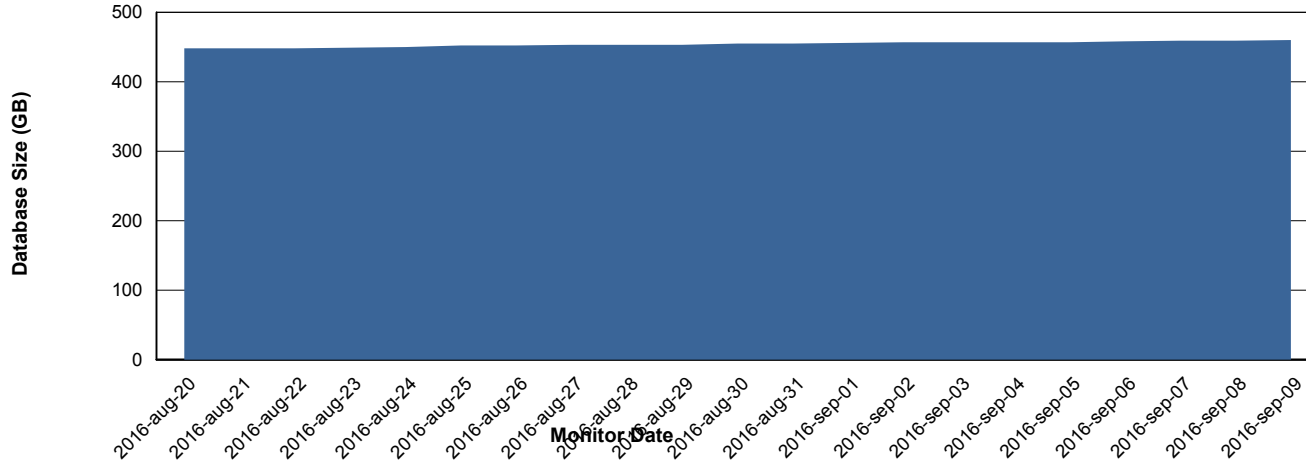
# Weekly SLA Customer Report

Customer AUJ\_Production  
Database ID 41



=====  
DATABASE SIZE AUJDB\_Production  
=====

## Database growth over last month



# Weekly SLA Customer Report

Customer AUJ\_Production  
Database ID 41



=====  
DATABASE TABLESPACES AUJDB\_BI  
=====

TOTAL DATABASE SIZE PER TABLESPACE

Date	Tablespace Name	Filesize (Gb)	Usedsize (Gb)	Percentage free
9-9-2016	ABSDATA	112	69	38
	INDX	192	150	22
8-9-2016	ABSDATA	112	69	38
	INDX	192	150	22
7-9-2016	ABSDATA	112	69	38
	INDX	192	150	22
6-9-2016	ABSDATA	112	69	38
	INDX	192	149	22
5-9-2016	ABSDATA	112	69	38
	INDX	192	149	22
4-9-2016	ABSDATA	112	69	38
	INDX	192	149	22
3-9-2016	ABSDATA	112	69	38
	INDX	192	149	22

# Weekly SLA Customer Report

Customer AUJ\_Production  
 Database ID 41



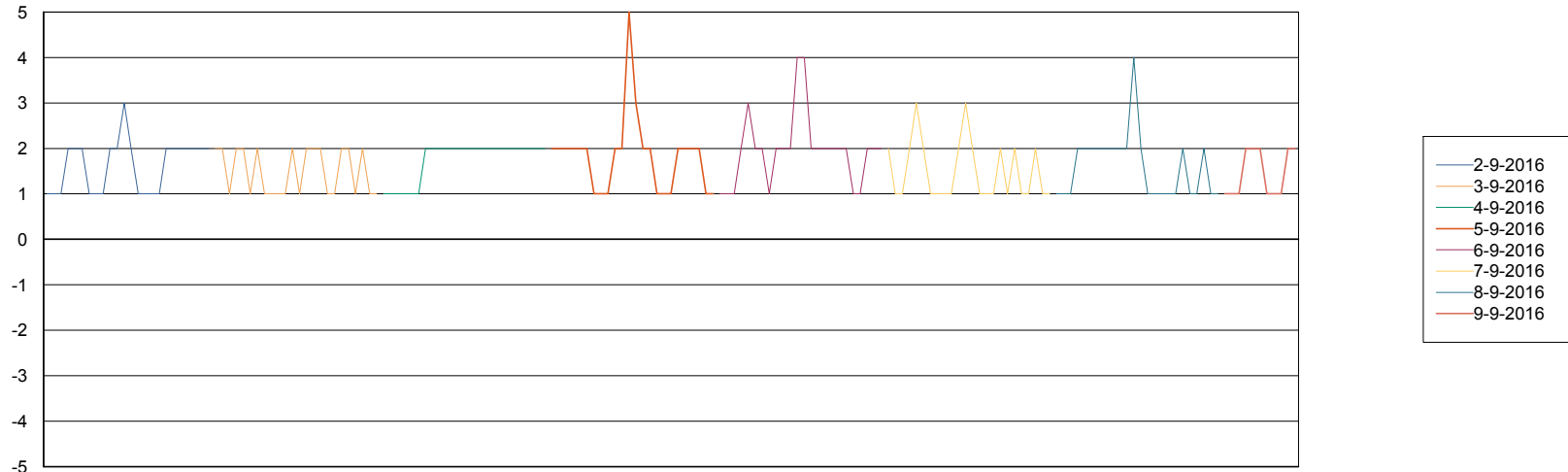
=====  
 DATABASE TABLESPACES AUJDB\_Production  
 =====

TOTAL DATABASE SIZE PER TABLESPACE

Date	Tablespace Name	Filesize (Gb)	Usedsize (Gb)	Percentage free
9-9-2016	ABSDATA	215	210	2
	INDX	256	247	4
8-9-2016	ABSDATA	215	210	2
	INDX	256	247	4
7-9-2016	ABSDATA	215	209	3
	INDX	256	247	4
6-9-2016	ABSDATA	213	209	2
	INDX	254	246	3
5-9-2016	ABSDATA	213	209	2
	INDX	254	246	3
4-9-2016	ABSDATA	213	208	2
	INDX	254	245	4
3-9-2016	ABSDATA	213	208	2
	INDX	254	245	4

=====  
 STANDBY DATABASE HEALTH AUJ\_Production  
 =====

Recovery lag for last 7 days



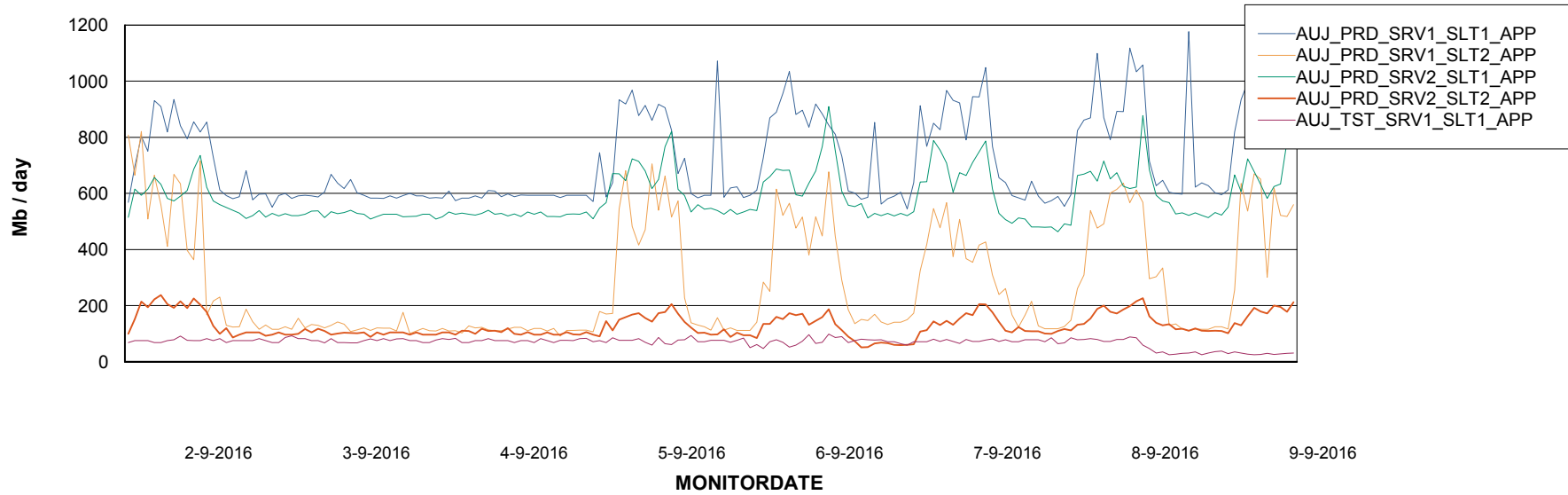
# Weekly SLA Customer Report

Customer AUJ\_Production  
Database ID 41



=====  
ABSolute Application Server Services  
=====

## Avg memory used per ABS Server Service



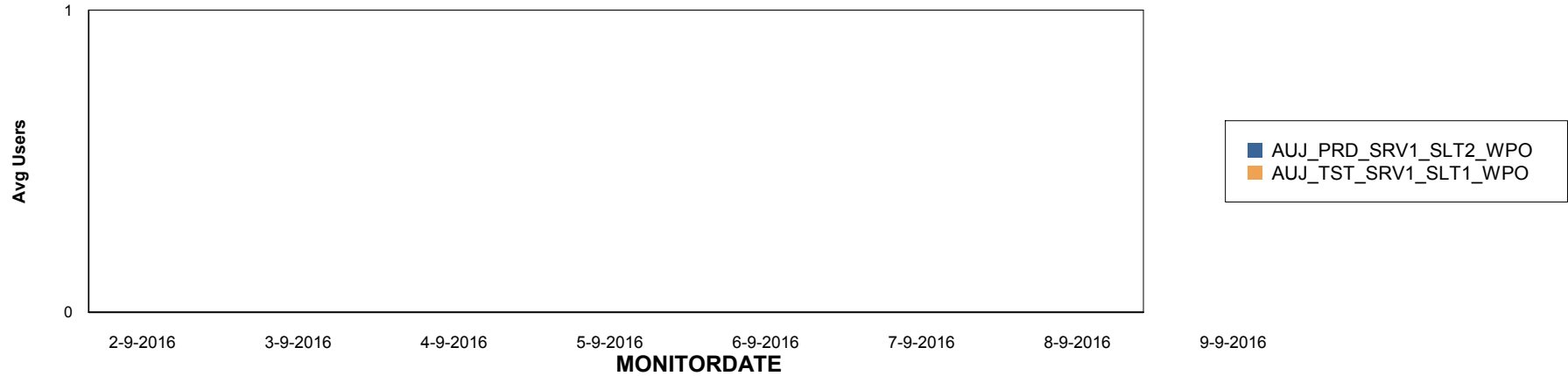
# Weekly SLA Customer Report

Customer AUJ\_Production  
Database ID 41

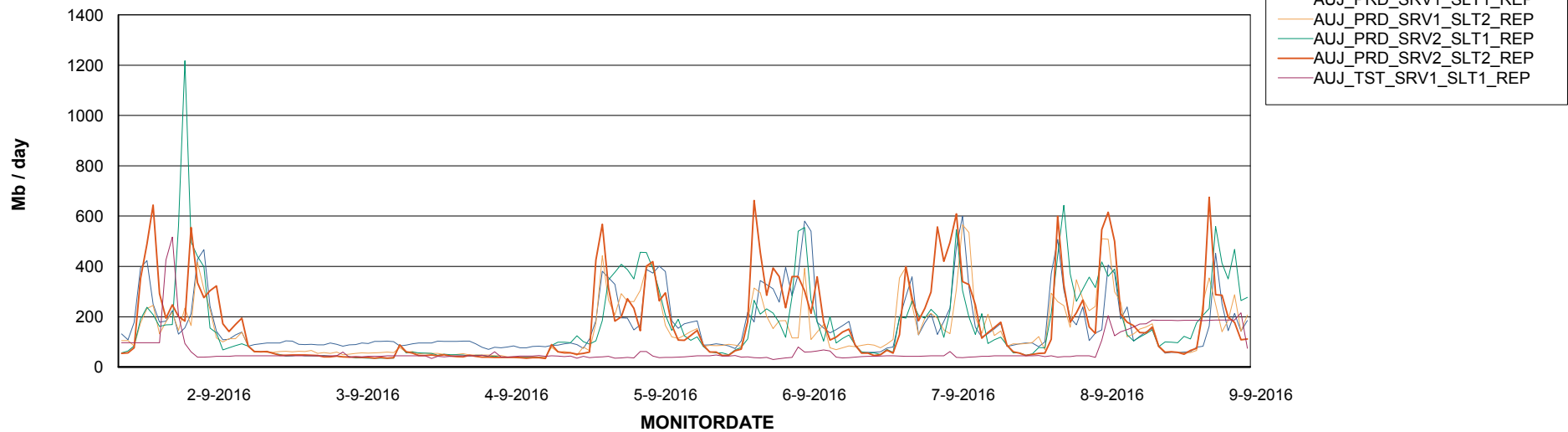


=====  
ABSolute Application ReportServer Services  
=====

## Disaster per ReportServer



## Avg memory used per ReportServer Service



# Weekly SLA Customer Report

Customer AUJ\_Production  
Database ID 41



## Disaster per ABS component

