

Weekly SLA Customer Report

Customer FIS_Production
 Database ID 46



=====
 HARDDISK USAGE FIS_PRD_ORACLE1
 =====

	Total disk space on C (GB)	Free disk space on C (GB)	Total disk space on L (GB)	Free disk space on L (GB)	Total disk space on O (GB)	Free disk space on O (GB)
11-6-2016	279	222	279	122	373	195
10-6-2016	279	222	279	128	373	195
9-6-2016	279	222	279	128	373	195
8-6-2016	279	222	279	128	373	196
7-6-2016	279	222	279	128	373	196
6-6-2016	279	222	279	128	373	196
5-6-2016	279	222	279	128	373	196

=====
 HARDDISK USAGE FIS_PRD_ORACLE2
 =====

	Total disk space on C (GB)	Free disk space on C (GB)	Total disk space on L (GB)	Free disk space on L (GB)	Total disk space on O (GB)	Free disk space on O (GB)
11-6-2016	279	222	279	102	373	195
10-6-2016	279	222	279	101	373	195
9-6-2016	279	222	279	101	373	195
8-6-2016	279	222	279	101	373	195
7-6-2016	279	222	279	101	373	195
6-6-2016	279	222	279	101	373	195
5-6-2016	279	222	279	101	373	195

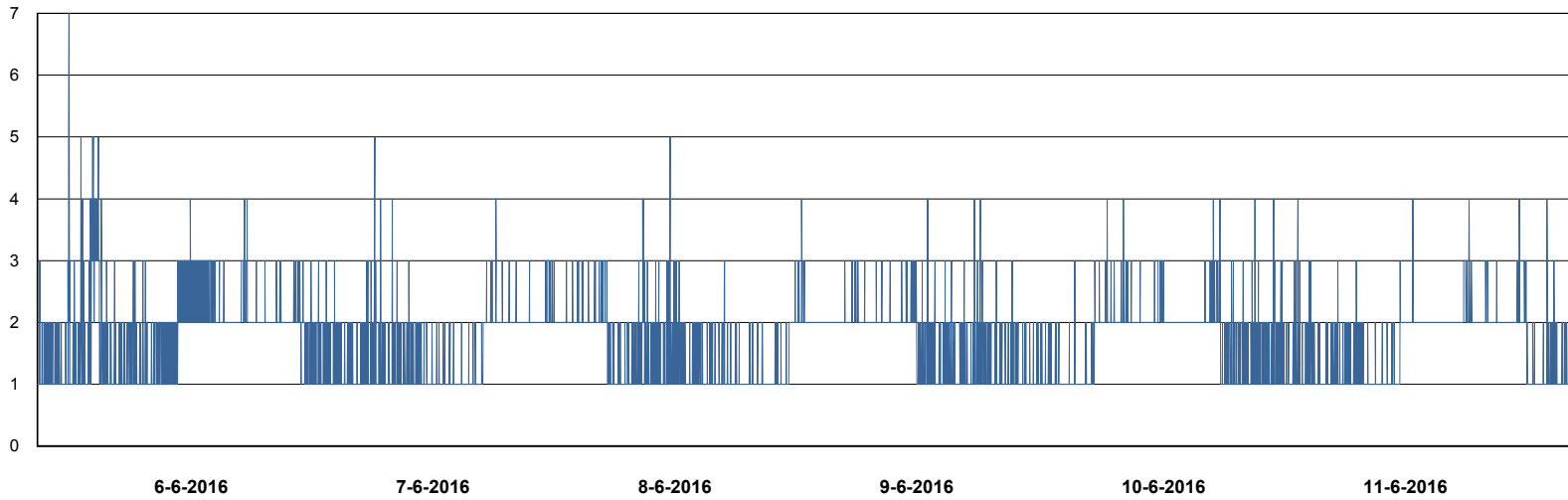
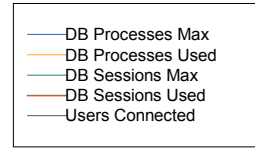
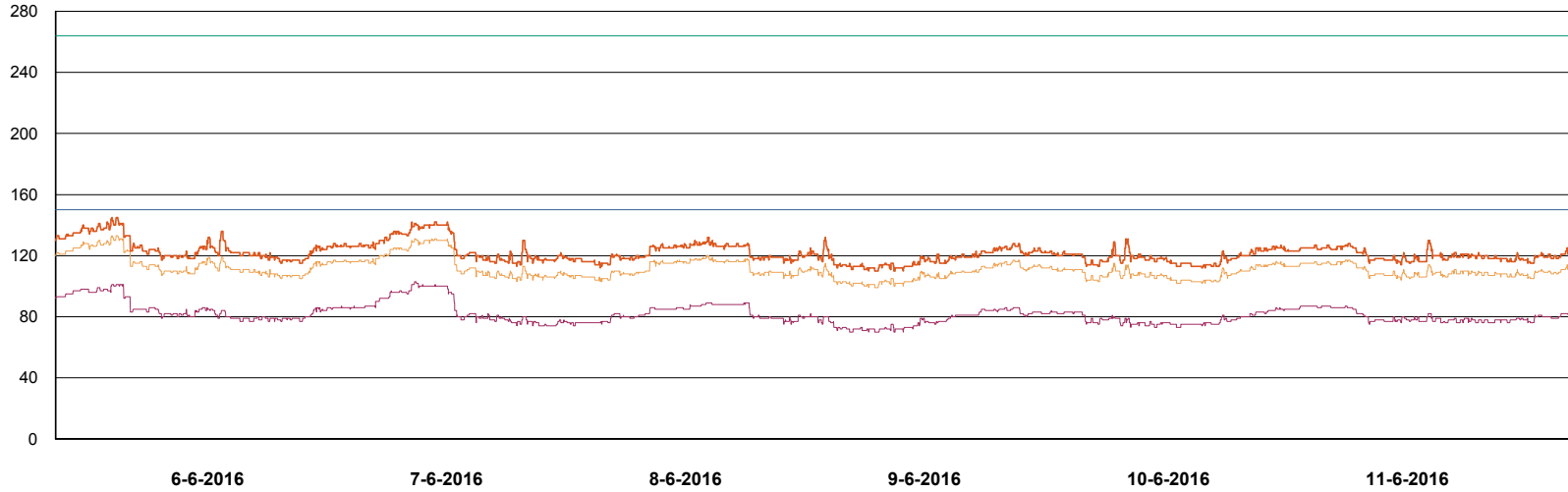
Weekly SLA Customer Report

Customer FIS_Production
Database ID 46



DATABASE PERFORMANCE

FISDB_Production

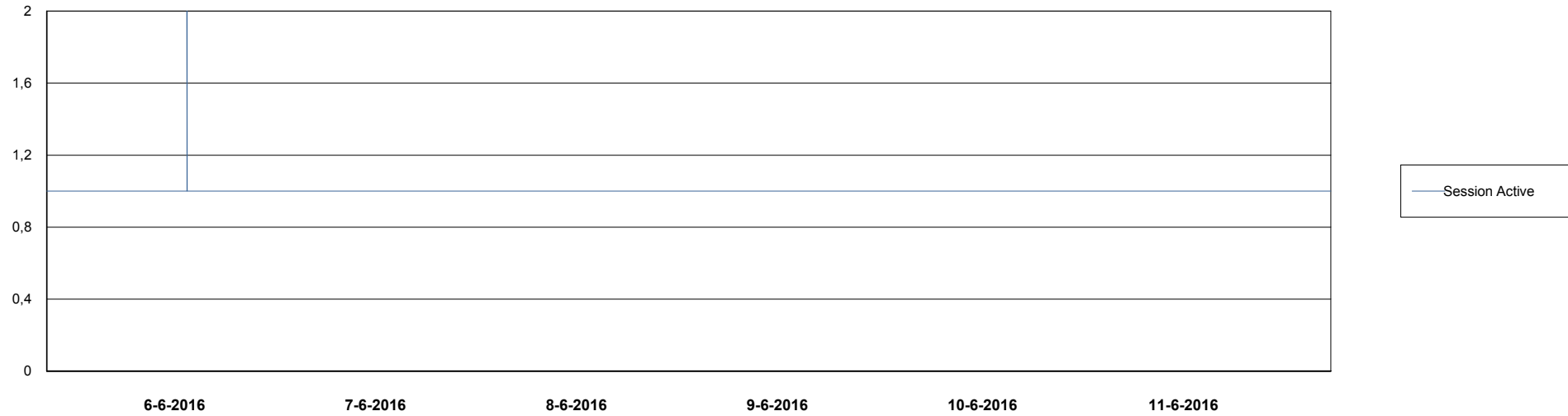
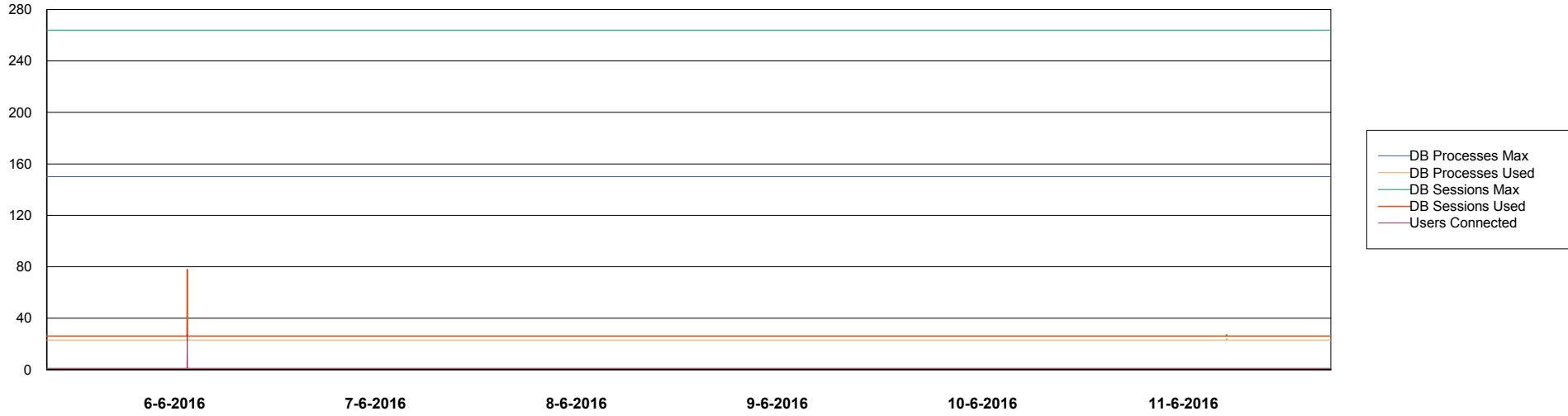


Weekly SLA Customer Report

Customer FIS_Production
Database ID 46



=====
DATABASE PERFORMANCE FISDB_Standby
=====



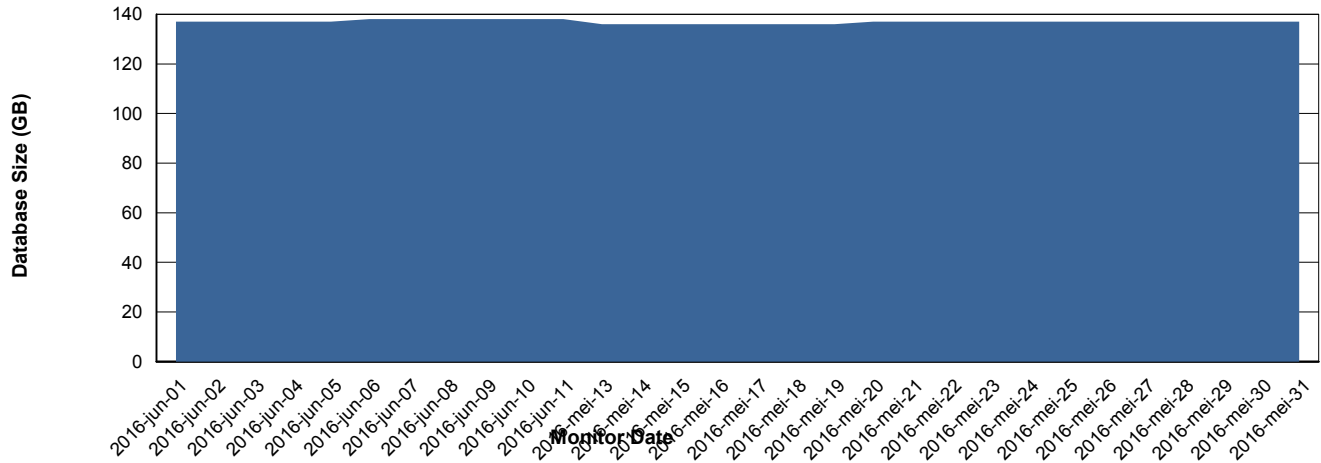
Weekly SLA Customer Report

Customer FIS_Production
 Database ID 46



=====
 DATABASE SIZE FISDB_Production
 =====

Database growth over last month



=====
 DATABASE TABLESPACES FISDB_Production
 =====

TOTAL DATABASE SIZE PER TABLESPACE

Date	Tablespace Name	Filesize (Gb)	Usedsize (Gb)	Percentage free
11-6-2016	ABSDATA	74	60	19
	INDX	88	74	16
10-6-2016	ABSDATA	74	60	19
	INDX	88	74	16
9-6-2016	ABSDATA	74	60	19
	INDX	88	74	16
8-6-2016	ABSDATA	74	60	19
	INDX	88	74	16
7-6-2016	ABSDATA	74	60	19
	INDX	88	74	16
6-6-2016	ABSDATA	74	60	19
	INDX	88	74	16
5-6-2016	ABSDATA	74	60	19
	INDX	88	74	16

Weekly SLA Customer Report

Customer FIS_Production
Database ID 46



=====
STANDBY DATABASE HEALTH FIS_Production
=====

Recovery lag for last 7 days

