

Weekly SLA Customer Report

Customer DFD Production
Database ID 39



=====
HARDDISK USAGE DFD_PRD_ABSWEB
=====

	Total disk space on C (GB)	Free disk space on C (GB)
11-6-2016	60	18
10-6-2016	60	18
9-6-2016	60	18
8-6-2016	60	18
7-6-2016	60	18
6-6-2016	60	18
5-6-2016	60	18

=====
HARDDISK USAGE DFD_PRD_BI1
=====

	Total disk space on C (GB)	Free disk space on C (GB)	Total disk space on E (GB)	Free disk space on E (GB)
11-6-2016	50	17	100	24
10-6-2016	50	17	100	23
9-6-2016	50	17	100	23
8-6-2016	50	17	100	23
7-6-2016	50	17	100	23
6-6-2016	50	17	100	23
5-6-2016	50	17	100	23

Weekly SLA Customer Report

Customer DFD Production
 Database ID 39



=====
 HARDDISK USAGE DFD_PRD_ORACLE1
 =====

	Total disk space on C (GB)	Free disk space on C (GB)	Total disk space on D (GB)	Free disk space on D (GB)	Total disk space on E (GB)	Free disk space on E (GB)	Total disk space on F (GB)	Free disk space on F (GB)
11-6-2016	78	40	479	355	400	208	800	675
10-6-2016	78	40	479	355	400	210	800	675
9-6-2016	78	40	479	355	400	214	800	675
8-6-2016	78	40	479	355	400	219	800	675
7-6-2016	78	40	479	355	400	222	800	675
6-6-2016	78	40	479	355	400	225	800	675
5-6-2016	78	40	479	355	400	226	800	675

=====
 HARDDISK USAGE DFD_PRD_ORACLE2
 =====

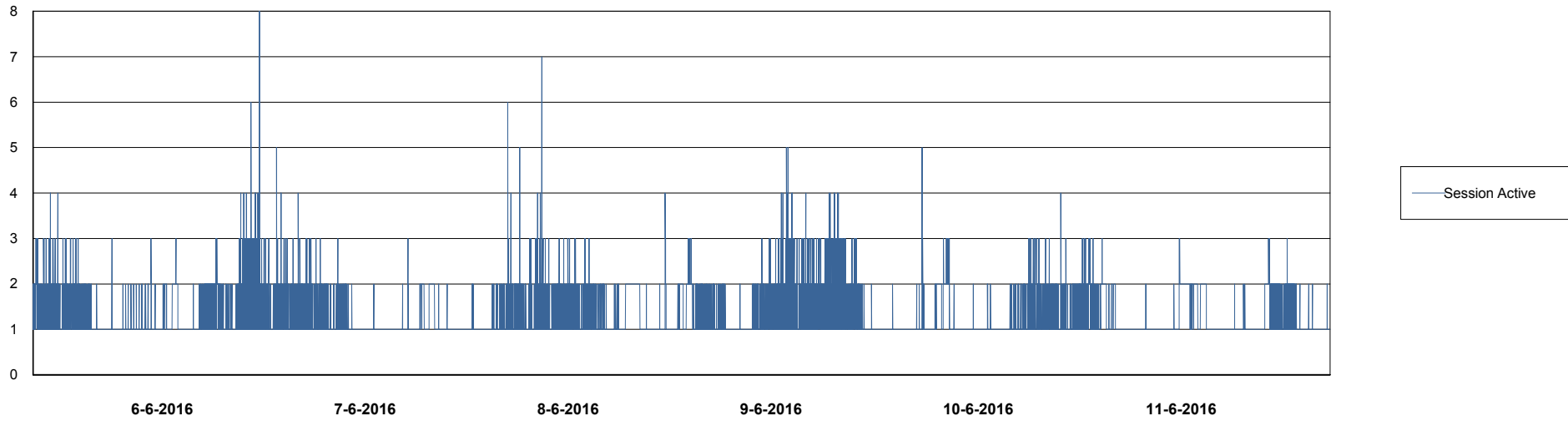
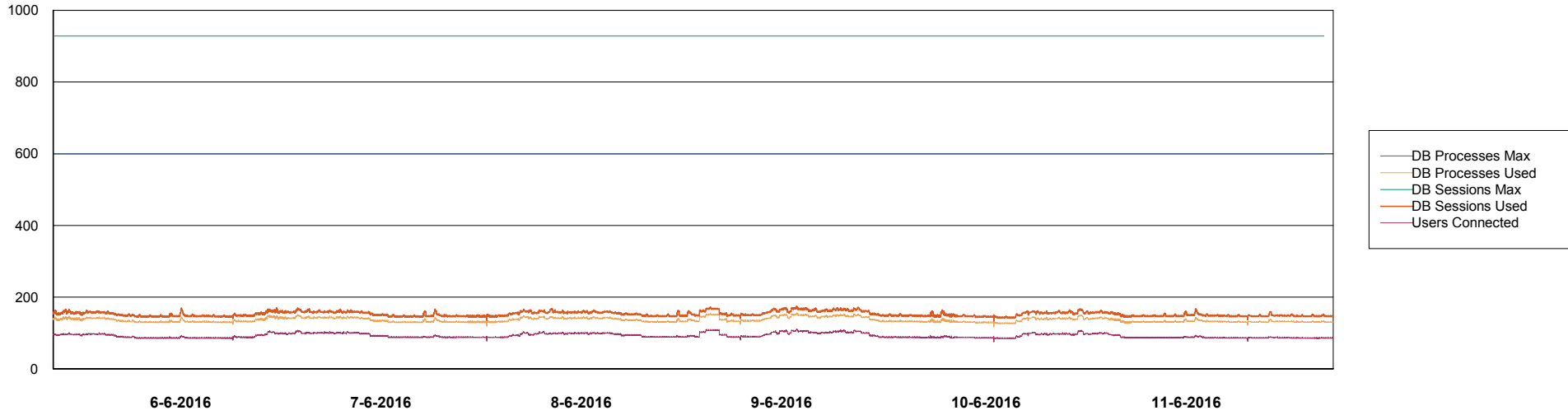
	Total disk space on C (GB)	Free disk space on C (GB)	Total disk space on D (GB)	Free disk space on D (GB)	Total disk space on E (GB)	Free disk space on E (GB)	Total disk space on F (GB)	Free disk space on F (GB)
11-6-2016	78	14	479	343	800	278	800	556
10-6-2016	78	14	479	343	800	280	800	556
9-6-2016	78	14	479	343	800	284	800	556
8-6-2016	78	14	479	343	800	288	800	556
7-6-2016	78	14	479	343	800	291	800	556
6-6-2016	78	14	479	343	800	294	800	556
5-6-2016	78	14	479	343	800	296	800	556

Weekly SLA Customer Report

Customer DFD Production
Database ID 39



DATABASE PERFORMANCE DFDDB_Production

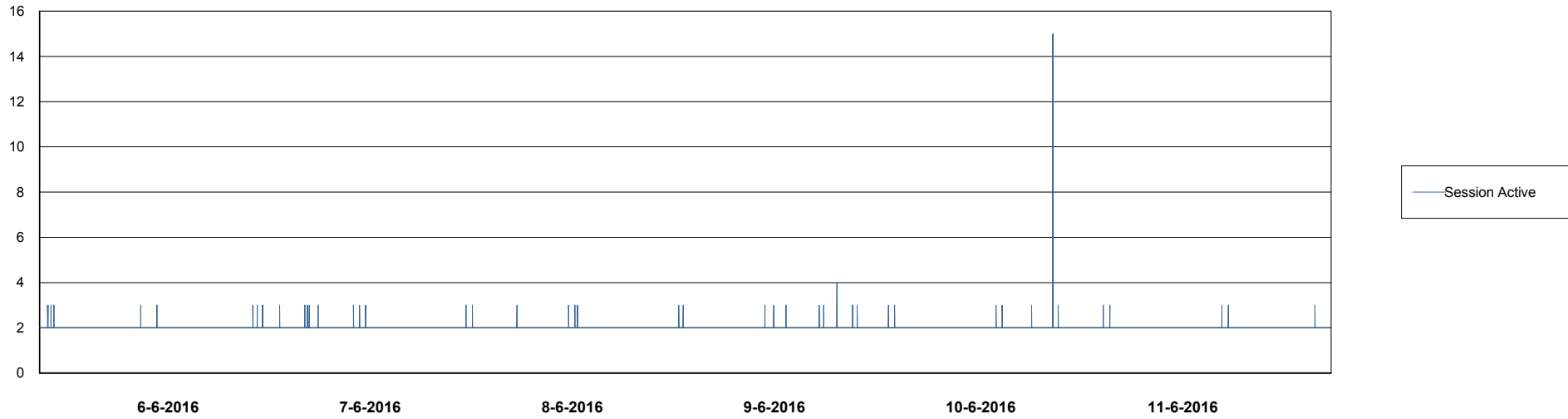
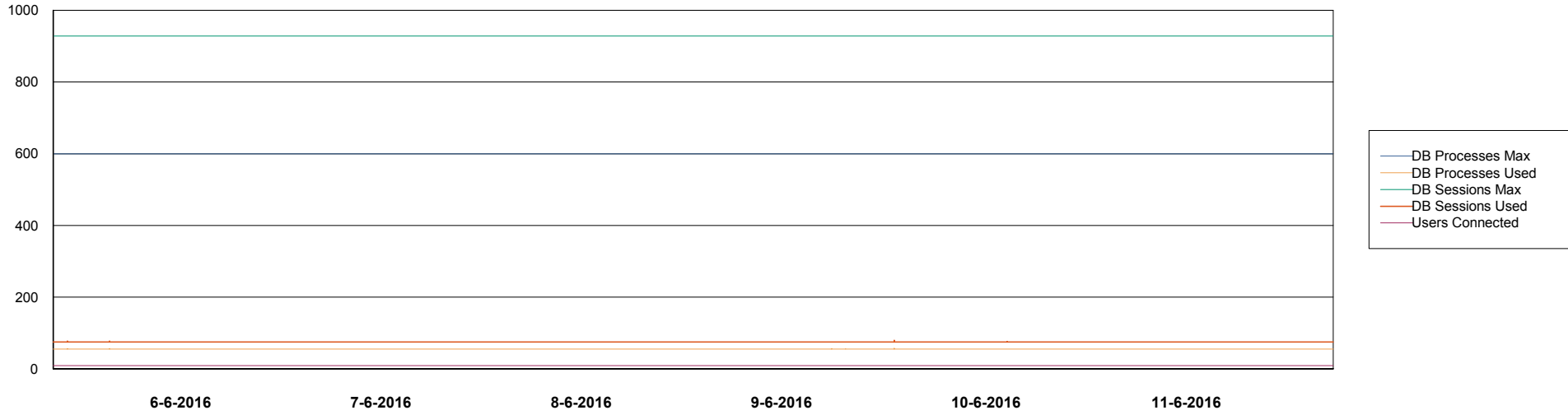


Weekly SLA Customer Report

Customer DFD Production
Database ID 39



DATABASE PERFORMANCE DFDDB_Standby

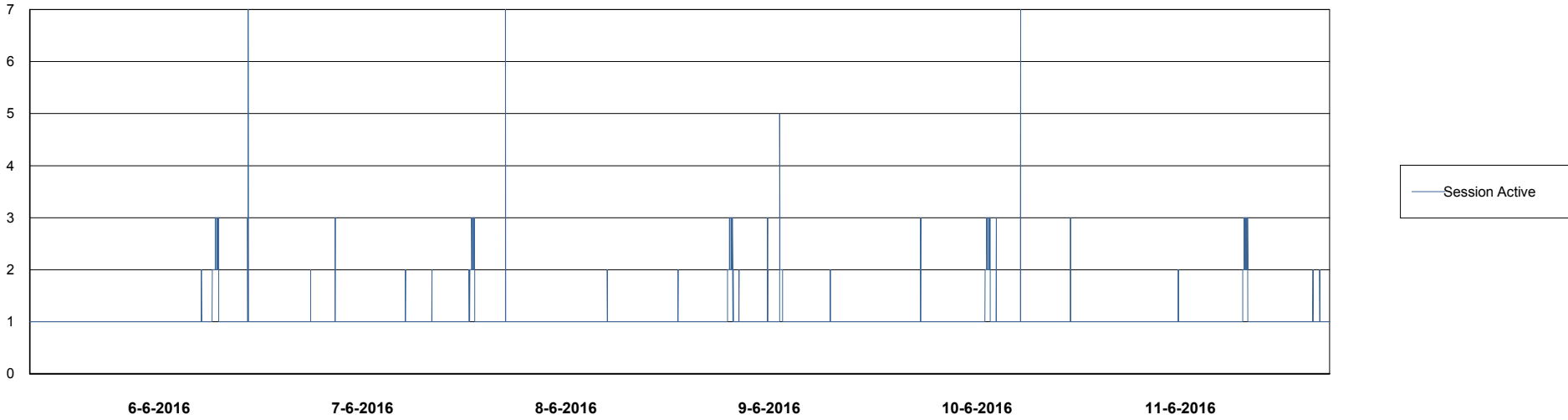
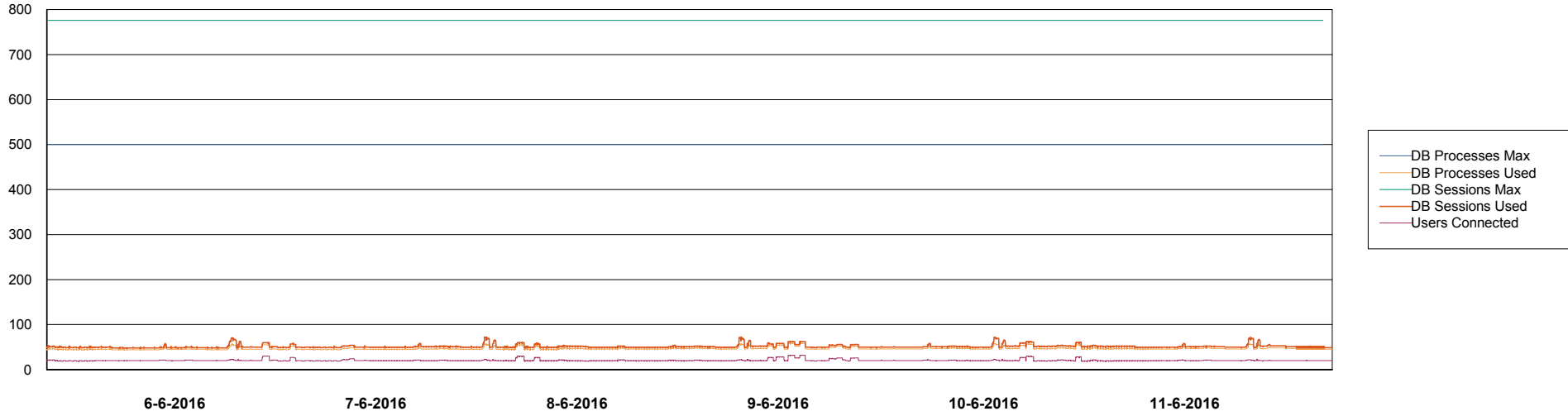


Weekly SLA Customer Report

Customer DFD Production
Database ID 39



DATABASE PERFORMANCE DFDDDBI_Production



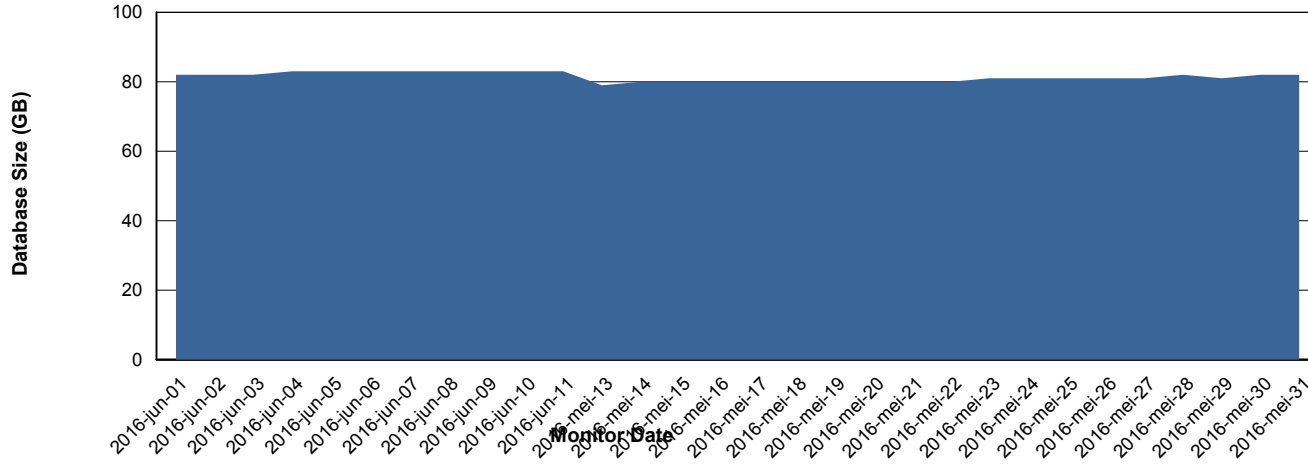
Weekly SLA Customer Report

Customer DFD Production
Database ID 39



=====
DATABASE SIZE DFDDDB_Production
=====

Database growth over last month



Weekly SLA Customer Report

Customer DFD Production
Database ID 39



=====
DATABASE TABLESPACES DFDDDB_Production
=====

TOTAL DATABASE SIZE PER TABLESPACE

Date	Tablespace Name	Filesize (Gb)	Usedsize (Gb)	Percentage free
11-6-2016	ABSDATA	34	25	26
	INDX	74	56	24
10-6-2016	ABSDATA	34	25	26
	INDX	74	56	24
9-6-2016	ABSDATA	34	25	26
	INDX	74	56	24
8-6-2016	ABSDATA	34	25	26
	INDX	74	56	24
7-6-2016	ABSDATA	34	25	26
	INDX	74	56	24
6-6-2016	ABSDATA	34	25	26
	INDX	74	56	24
5-6-2016	ABSDATA	34	25	26
	INDX	74	56	24

Weekly SLA Customer Report

Customer DFD Production
 Database ID 39



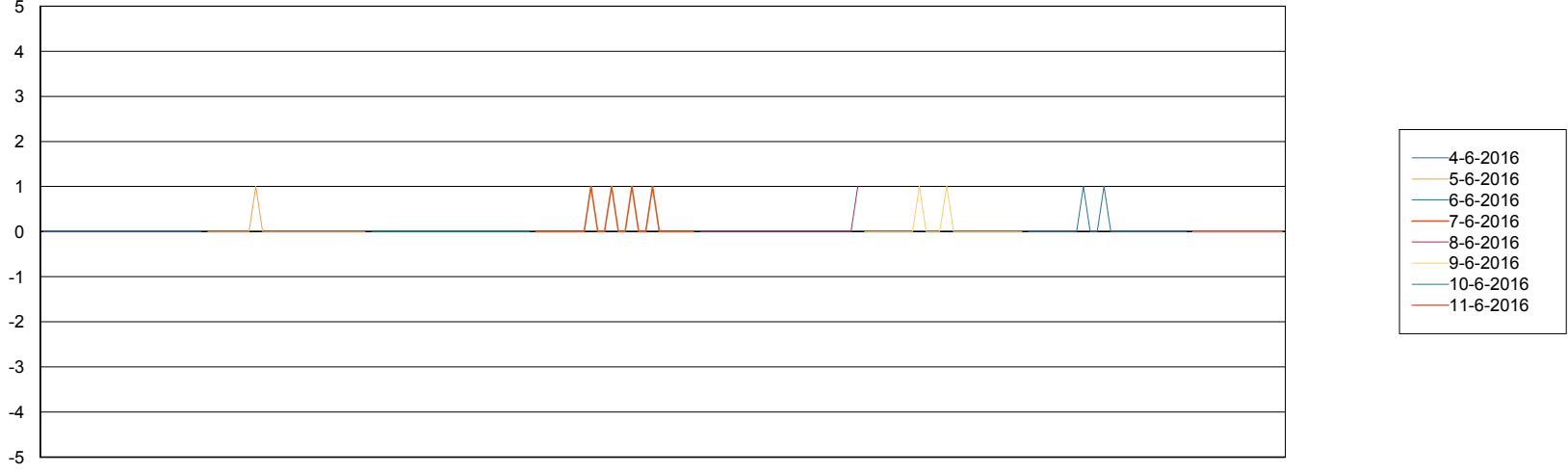
=====
 DATABASE TABLESPACES DFDDDBI_Production
 =====

TOTAL DATABASE SIZE PER TABLESPACE

Date	Tablespace Name	Filesize (Gb)	Usedsize (Gb)	Percentage free
11-6-2016	ABSDATA	16	14	13
	INDX	20	15	25
10-6-2016	ABSDATA	16	14	13
	INDX	20	15	25
9-6-2016	ABSDATA	16	14	13
	INDX	20	15	25
8-6-2016	ABSDATA	16	14	13
	INDX	20	15	25
7-6-2016	ABSDATA	16	14	13
	INDX	20	14	30
6-6-2016	ABSDATA	16	14	13
	INDX	20	14	30
5-6-2016	ABSDATA	16	14	13
	INDX	20	14	30

=====
 STANDBY DATABASE HEALTH DFD Production
 =====

Recovery lag for last 7 days



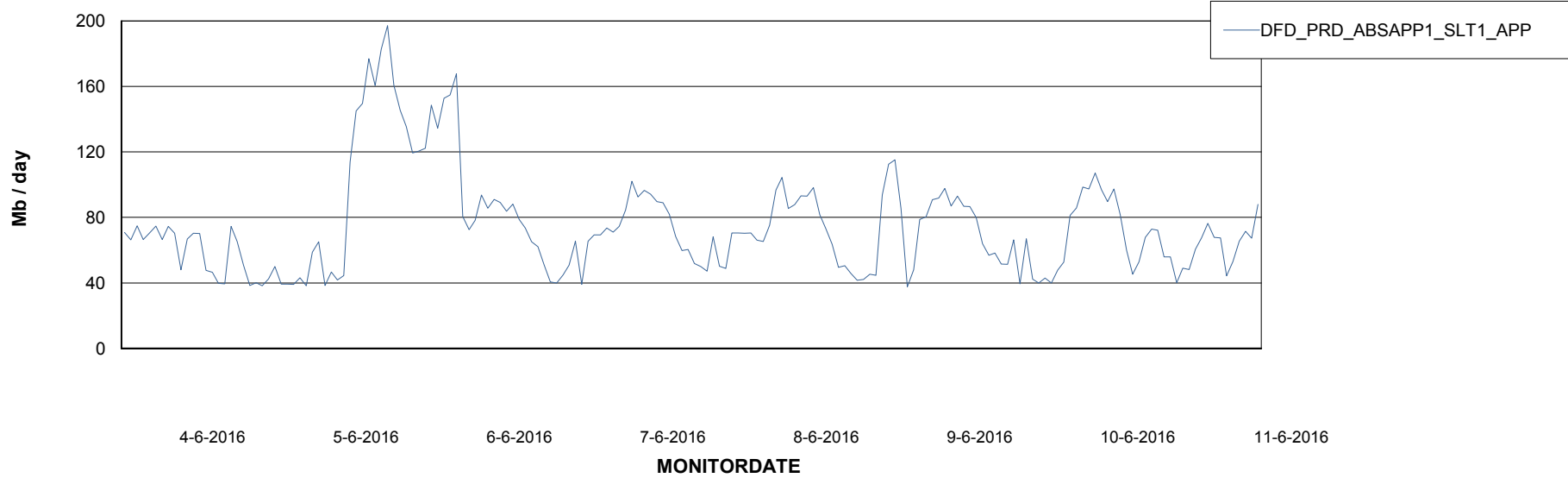
Weekly SLA Customer Report

Customer DFD Production
Database ID 39



=====
ABSolute Application Server Services
=====

Avg memory used per ABS Server Service



Weekly SLA Customer Report

Customer DFD Production
Database ID 39



=====
ABSolute Application ReportServer Services
=====

Avg memory used per ReportServer Service

