

Weekly SLA Customer Report

Customer NIX_Production
 Database ID 51



=====
 HARDDISK USAGE NIX_PRD_ABSAPP2
 =====

	Total disk space on C (GB)	Free disk space on C (GB)
4-6-2016	200	167
3-6-2016	200	167
2-6-2016	200	167
1-6-2016	200	168
31-5-2016	200	53
30-5-2016	200	25
29-5-2016	200	29

=====
 HARDDISK USAGE NIX_PRD_ABSWEB01
 =====

	Total disk space on C (GB)	Free disk space on C (GB)	Total disk space on E (GB)	Free disk space on E (GB)
4-6-2016	300	275	0	0
3-6-2016	300	275	0	0
2-6-2016	300	275	0	0
1-6-2016	300	276	0	0
31-5-2016	300	276	0	0
30-5-2016	300	276	0	0
29-5-2016	300	277	0	0

Weekly SLA Customer Report

Customer NIX_Production
 Database ID 51



=====
 HARDDISK USAGE NIX_PRD_ORACLE_B1
 =====

	Total disk space on C (GB)	Free disk space on C (GB)	Total disk space on E (GB)	Free disk space on E (GB)	Total disk space on F (GB)	Free disk space on F (GB)	Total disk space on G (GB)	Free disk space on G (GB)
4-6-2016	279	66	558	232	279	179	558	123
3-6-2016	279	66	558	233	279	179	558	109
2-6-2016	279	66	558	236	279	179	558	116
1-6-2016	279	66	558	241	279	179	558	123
31-5-2016	279	66	558	216	279	179	558	130
30-5-2016	279	66	558	198	279	179	558	136
29-5-2016	279	66	558	200	279	179	558	144

=====
 HARDDISK USAGE NIX_PRD_ORCDB1
 =====

	Total disk space on C (GB)	Free disk space on C (GB)	Total disk space on E (GB)	Free disk space on E (GB)	Total disk space on F (GB)	Free disk space on F (GB)	Total disk space on G (GB)	Free disk space on G (GB)
4-6-2016	279	73	558	465	558	457	279	54
3-6-2016	279	72	558	465	558	457	279	48
2-6-2016	279	73	558	465	558	457	279	43
1-6-2016	279	70	558	465	558	457	279	46
31-5-2016	279	74	558	465	558	457	279	48
30-5-2016	279	74	558	465	558	457	279	49
29-5-2016	279	74	558	465	558	457	279	50

Weekly SLA Customer Report

Customer NIX_Production
 Database ID 51



=====
 HARDDISK USAGE NIX_PRD_ORCDB2
 =====

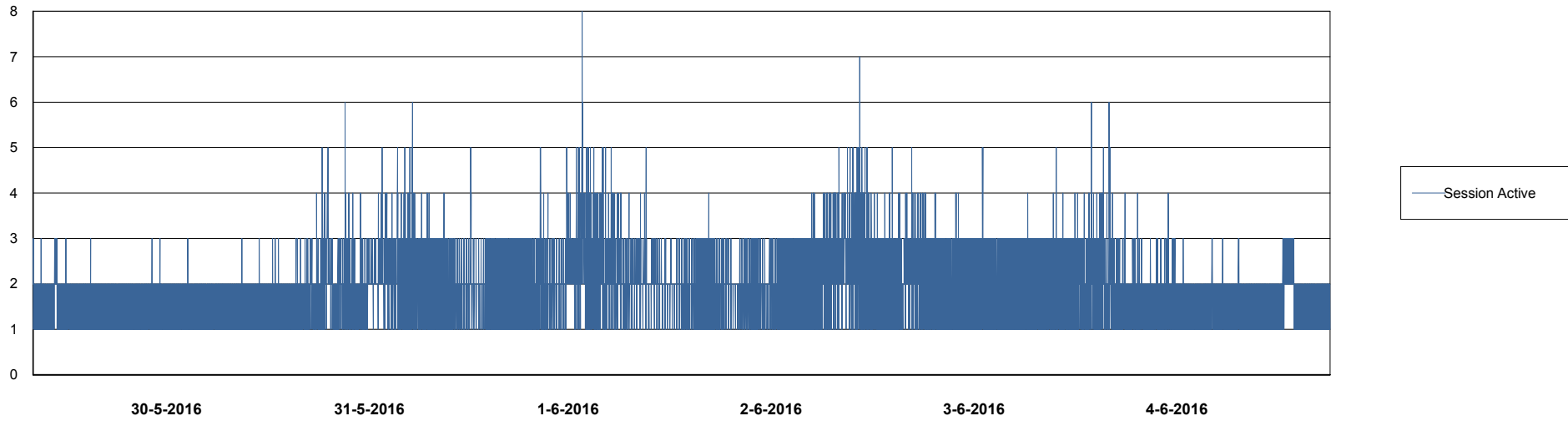
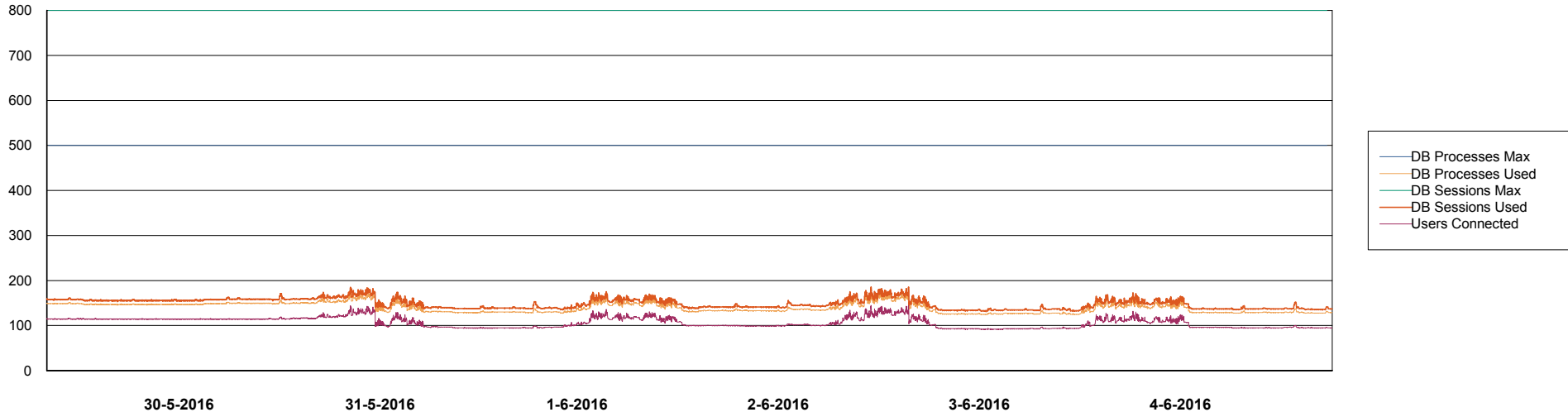
	Total disk space on C (GB)	Free disk space on C (GB)	Total disk space on E (GB)	Free disk space on E (GB)	Total disk space on F (GB)	Free disk space on F (GB)	Total disk space on G (GB)	Free disk space on G (GB)
4-6-2016	279	73	558	465	558	457	279	54
3-6-2016	279	72	558	465	558	457	279	48
2-6-2016	279	73	558	465	558	457	279	43
1-6-2016	279	70	558	465	558	457	279	46
31-5-2016	279	74	558	465	558	457	279	48
30-5-2016	279	74	558	465	558	457	279	49
29-5-2016	279	74	558	465	558	457	279	50

Weekly SLA Customer Report

Customer NIX_Production
Database ID 51



DATABASE PERFORMANCE NIXDB_Production

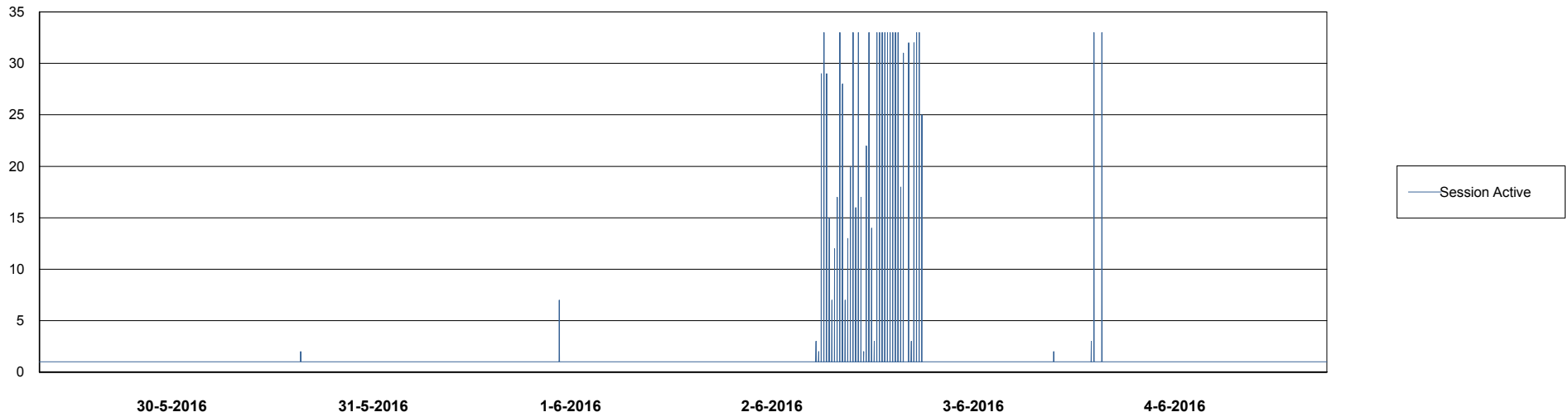
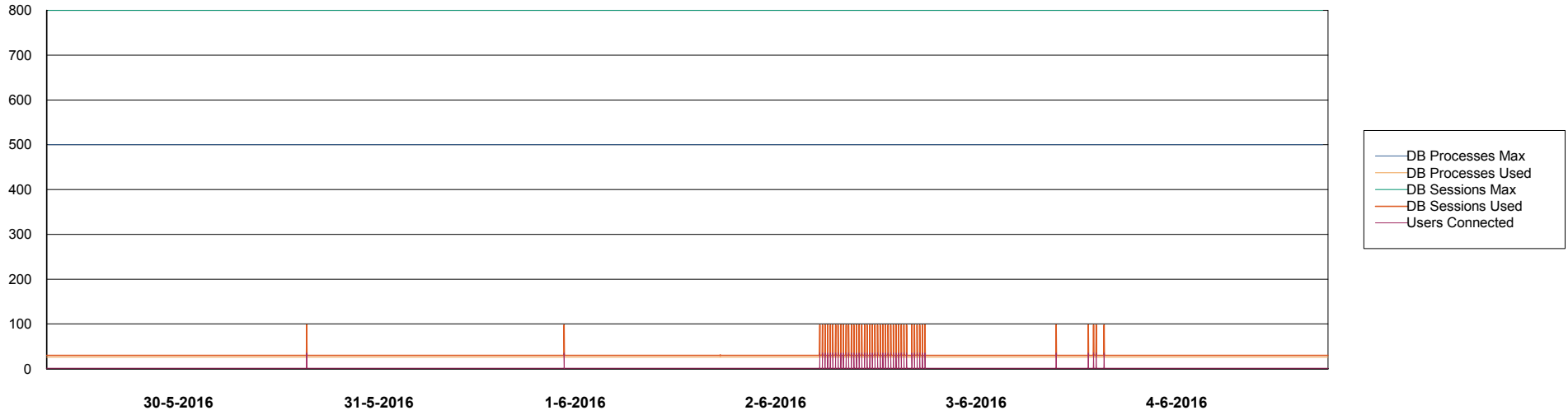


Weekly SLA Customer Report

Customer NIX_Production
Database ID 51



=====
DATABASE PERFORMANCE NIXDB_Standby
=====



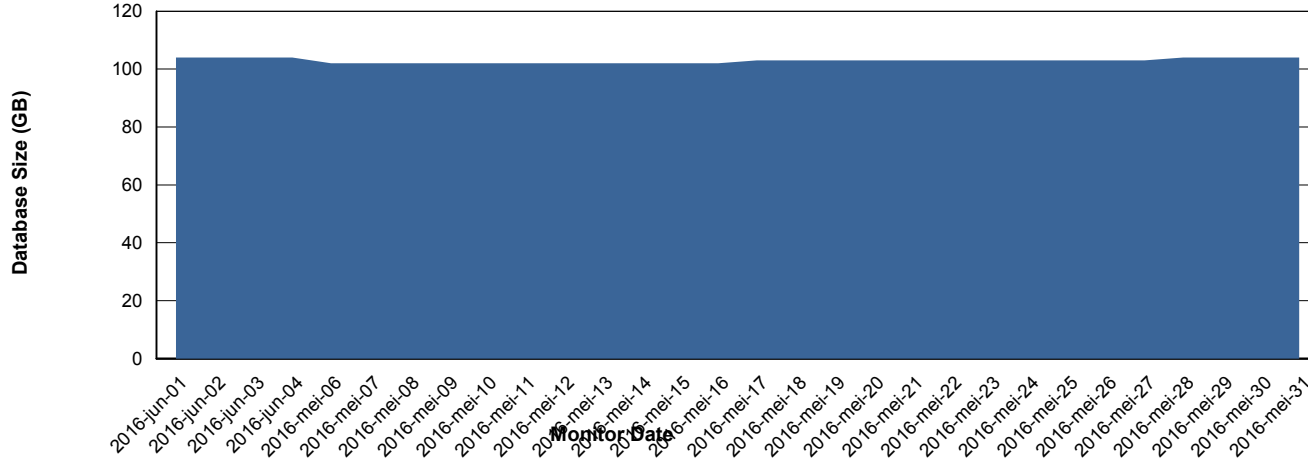
Weekly SLA Customer Report

Customer NIX_Production
 Database ID 51



=====
 DATABASE SIZE NIXDB_Production
 =====

Database growth over last month



=====
 DATABASE TABLESPACES NIXDB_Production
 =====

TOTAL DATABASE SIZE PER TABLESPACE

Date	Tablespace Name	Filesize (Gb)	Usedsize (Gb)	Percentage free
4-6-2016	ABSDATA	50	40	20
	INDX	100	63	37
3-6-2016	ABSDATA	50	40	20
	INDX	100	63	37
2-6-2016	ABSDATA	50	40	20
	INDX	100	63	37
1-6-2016	ABSDATA	50	40	20
	INDX	100	63	37
31-5-2016	ABSDATA	50	40	20
	INDX	100	63	37
30-5-2016	ABSDATA	50	40	20
	INDX	100	63	37
29-5-2016	ABSDATA	50	40	20
	INDX	100	63	37

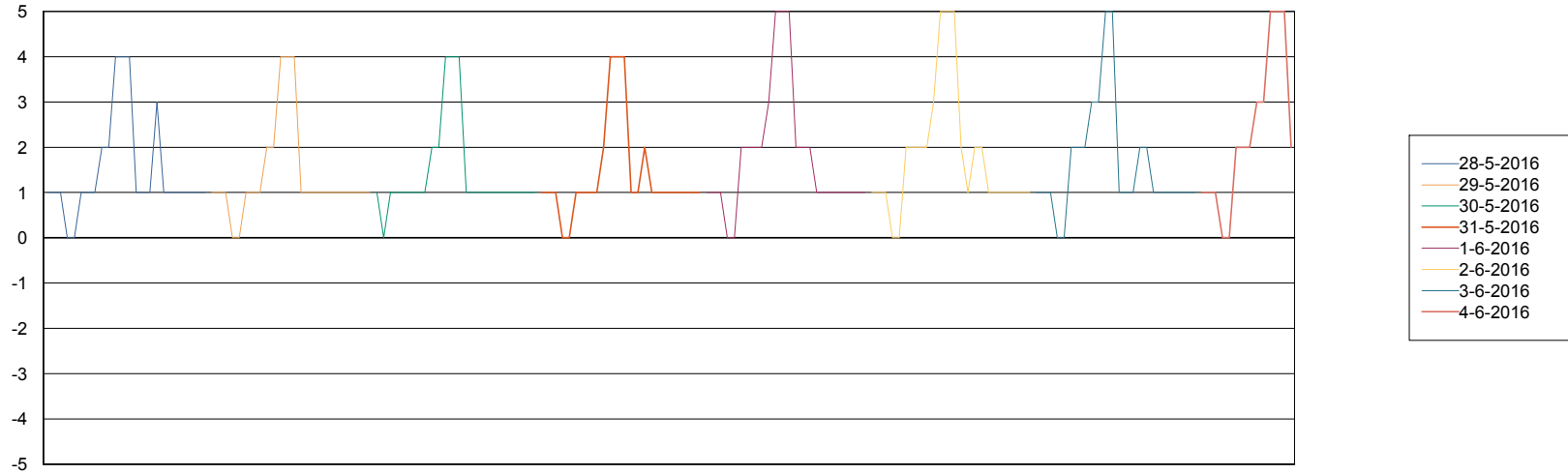
Weekly SLA Customer Report

Customer NIX_Production
Database ID 51



=====
STANDBY DATABASE HEALTH NIX_Production
=====

Recovery lag for last 7 days



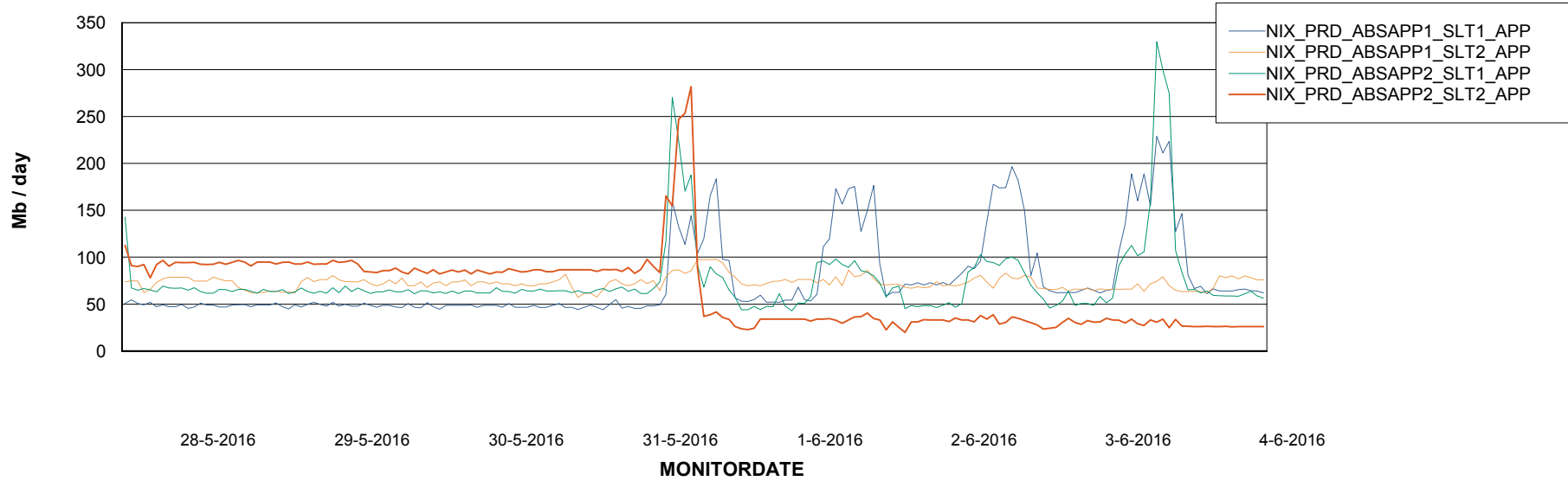
Weekly SLA Customer Report

Customer NIX_Production
Database ID 51



=====
ABSolute Application Server Services
=====

Avg memory used per ABS Server Service



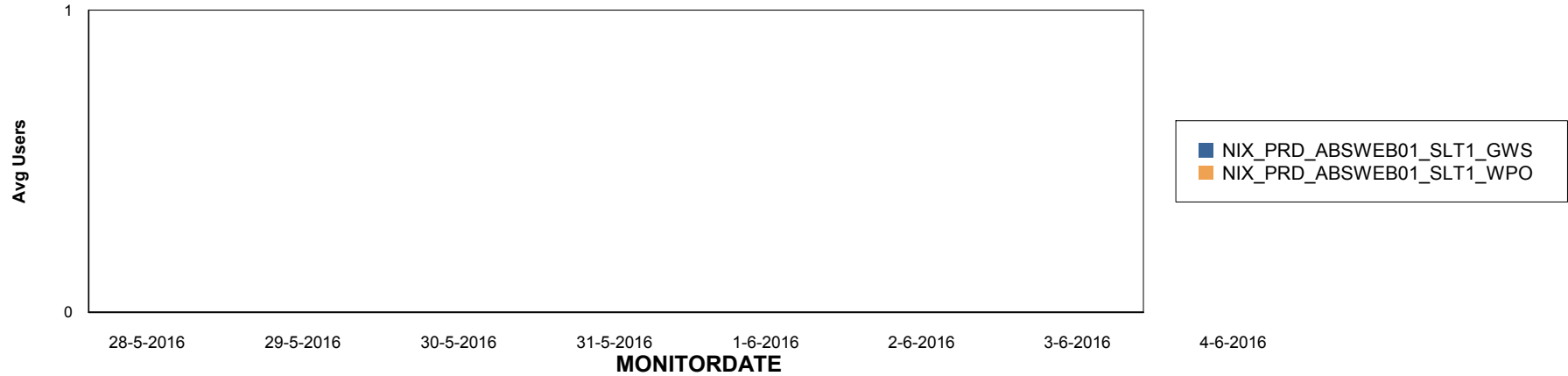
Weekly SLA Customer Report

Customer NIX_Production
Database ID 51

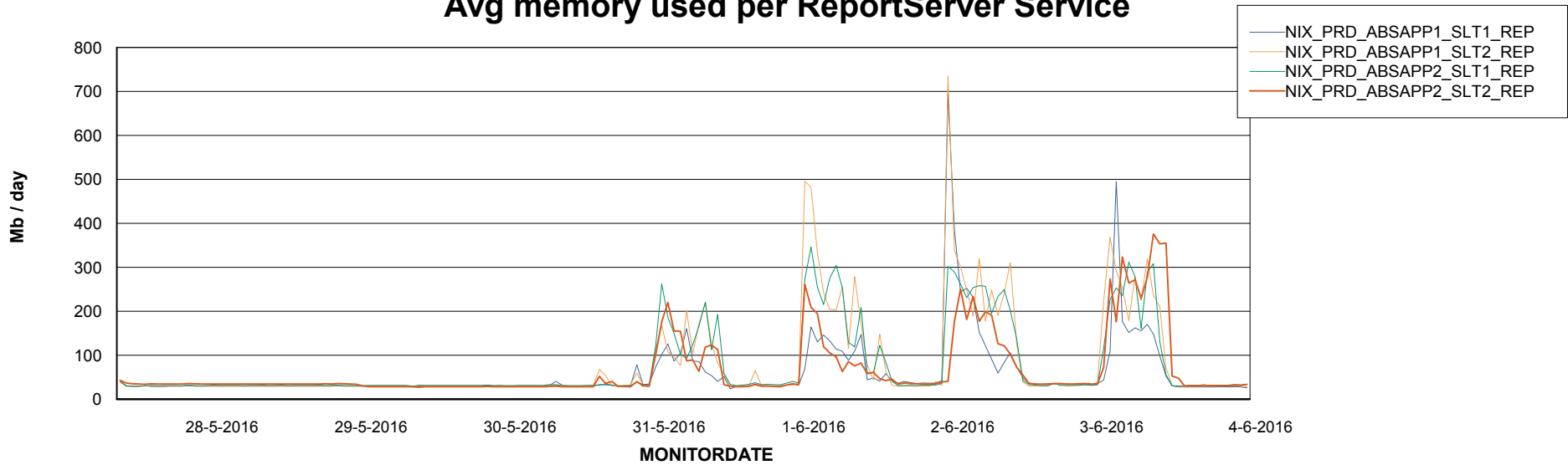


=====
ABSolute Application ReportServer Services
=====

Disaster per ReportServer



Avg memory used per ReportServer Service



Weekly SLA Customer Report

Customer NIX_Production
Database ID 51



Disaster per ABS component

