

Weekly SLA Customer Report

Customer DFD Production
 Database ID 39



=====
 HARDDISK USAGE DFD_PRD_ABSWEB
 =====

	Total disk space on C (GB)	Free disk space on C (GB)
4-6-2016	60	18
3-6-2016	60	18
2-6-2016	60	18
1-6-2016	60	18
31-5-2016	60	18
30-5-2016	60	18
29-5-2016	60	18

=====
 HARDDISK USAGE DFD_PRD_BI1
 =====

	Total disk space on C (GB)	Free disk space on C (GB)	Total disk space on E (GB)	Free disk space on E (GB)
4-6-2016	50	17	100	23
3-6-2016	50	17	100	22
2-6-2016	50	17	100	22
1-6-2016	50	17	100	22
31-5-2016	50	17	100	22
30-5-2016	50	17	100	22
29-5-2016	50	17	100	22

Weekly SLA Customer Report

Customer DFD Production
 Database ID 39



=====
 HARDDISK USAGE DFD_PRD_ORACLE1
 =====

	Total disk space on C (GB)	Free disk space on C (GB)	Total disk space on D (GB)	Free disk space on D (GB)	Total disk space on E (GB)	Free disk space on E (GB)	Total disk space on F (GB)	Free disk space on F (GB)
4-6-2016	78	40	479	355	400	208	800	675
3-6-2016	78	40	479	355	400	210	800	675
2-6-2016	78	40	479	355	400	214	800	675
1-6-2016	78	40	479	355	400	218	800	675
31-5-2016	78	40	479	355	400	222	800	675
30-5-2016	78	40	479	355	400	226	800	675
29-5-2016	78	40	479	355	400	228	800	675

=====
 HARDDISK USAGE DFD_PRD_ORACLE2
 =====

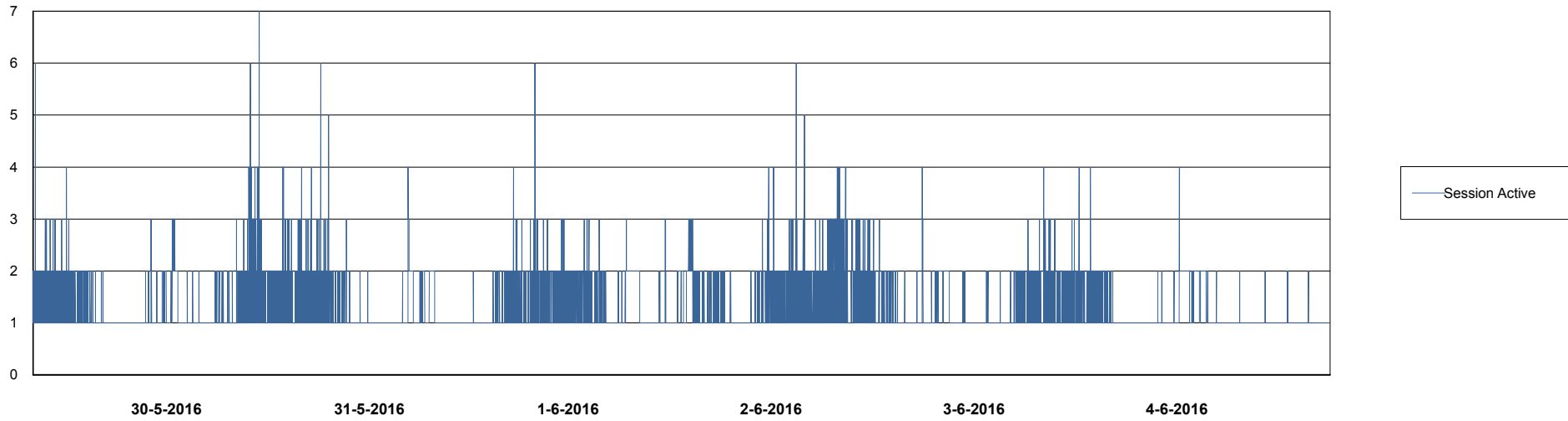
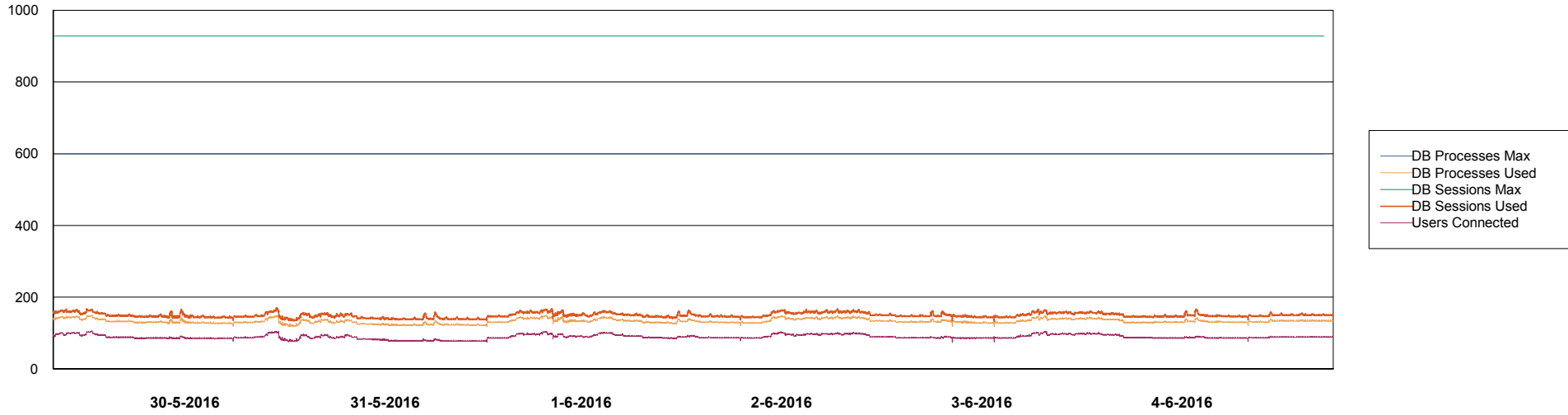
	Total disk space on C (GB)	Free disk space on C (GB)	Total disk space on D (GB)	Free disk space on D (GB)	Total disk space on E (GB)	Free disk space on E (GB)	Total disk space on F (GB)	Free disk space on F (GB)
4-6-2016	78	14	479	343	800	297	800	556
3-6-2016	78	14	479	343	800	299	800	556
2-6-2016	78	15	479	343	800	303	800	556
1-6-2016	78	15	479	343	800	307	800	556
31-5-2016	78	15	479	343	800	311	800	556
30-5-2016	78	15	479	343	800	315	800	556
29-5-2016	78	15	479	343	800	317	800	556

Weekly SLA Customer Report

Customer DFD Production
Database ID 39



DATABASE PERFORMANCE DFDDB_Production

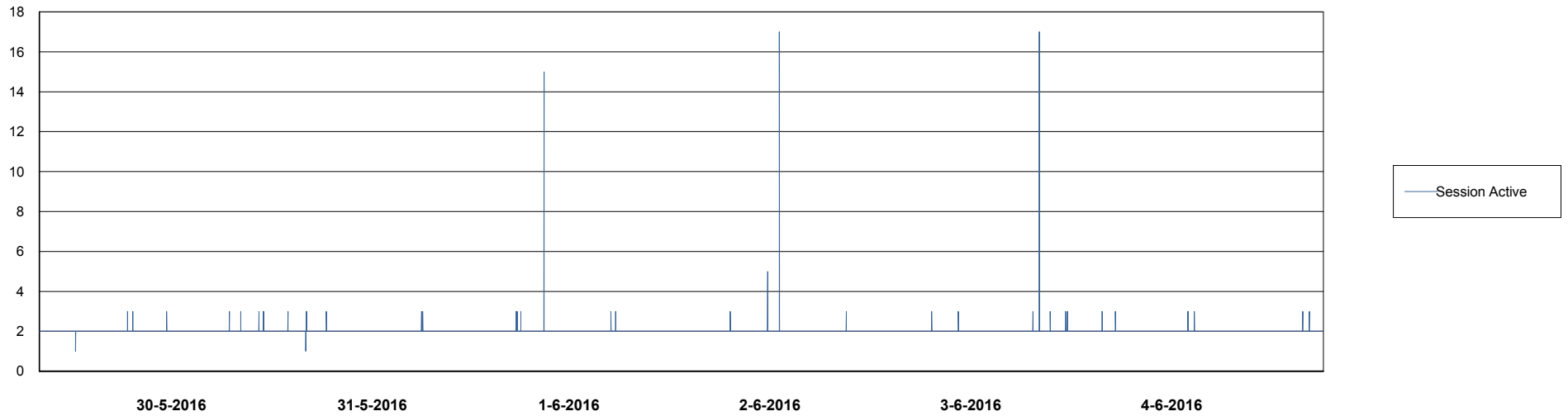
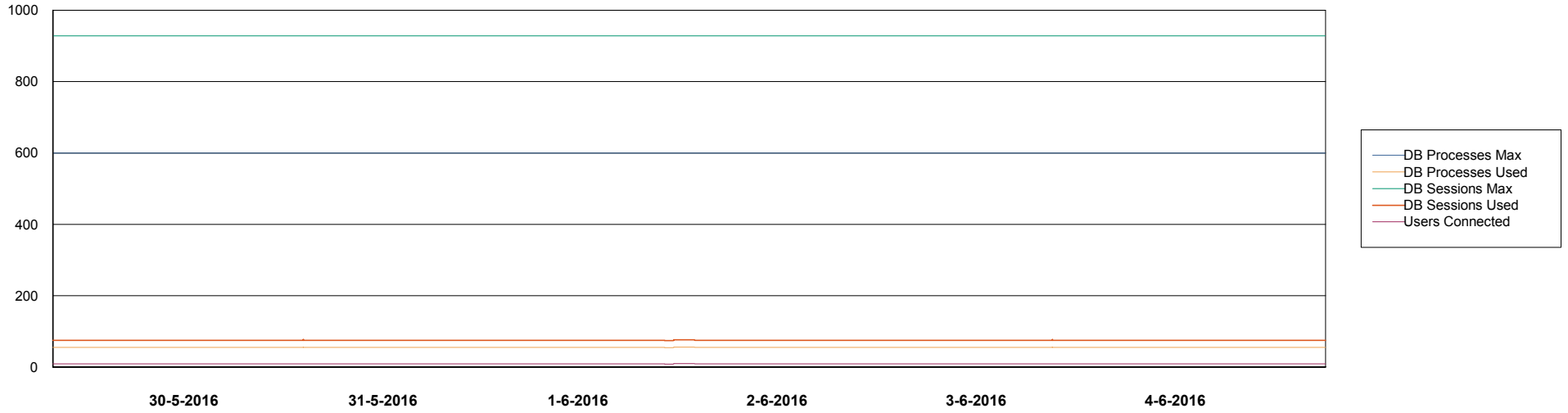


Weekly SLA Customer Report

Customer DFD Production
Database ID 39



DATABASE PERFORMANCE DFDDB_Standby

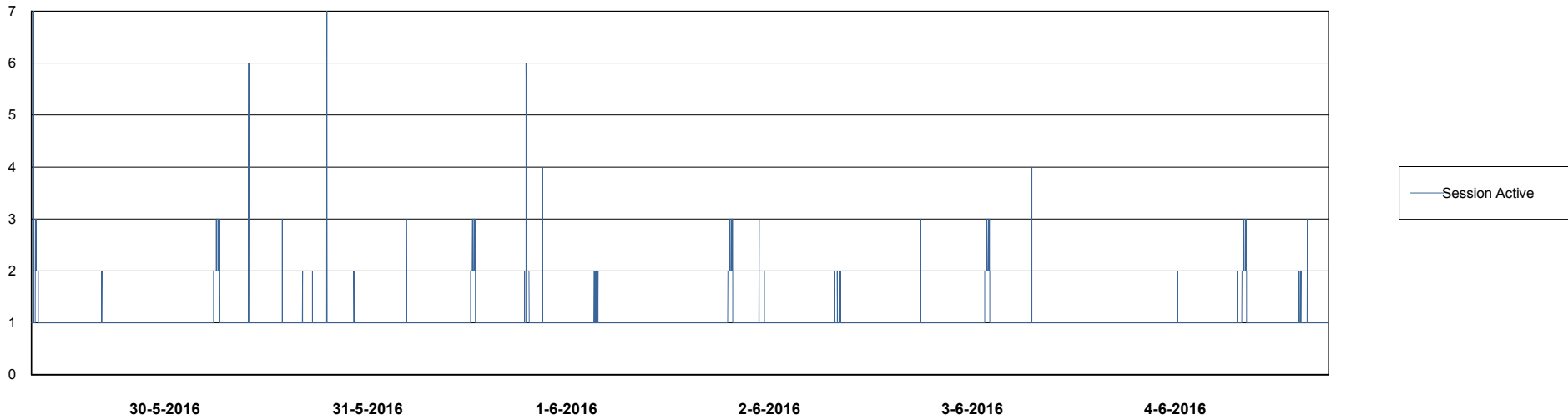
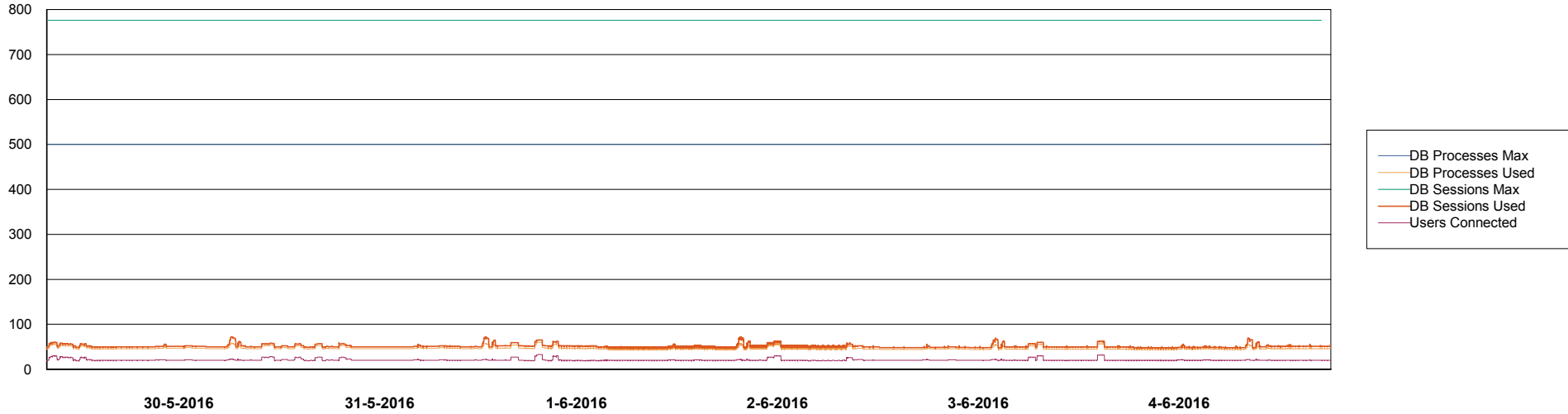


Weekly SLA Customer Report

Customer DFD Production
Database ID 39



DATABASE PERFORMANCE DFDDDBI_Production



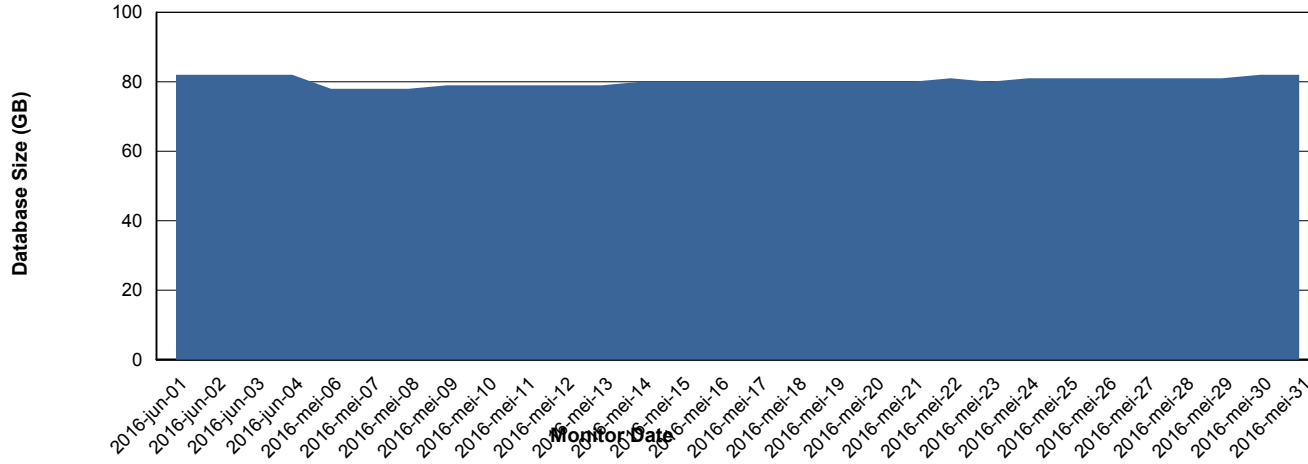
Weekly SLA Customer Report

Customer DFD Production
Database ID 39



=====
DATABASE SIZE DFDDDB_Production
=====

Database growth over last month



Weekly SLA Customer Report

Customer DFD Production
Database ID 39



=====
DATABASE TABLESPACES DFDDDB_Production
=====

TOTAL DATABASE SIZE PER TABLESPACE

Date	Tablespace Name	Filesize (Gb)	Usedsize (Gb)	Percentage free
4-6-2016	ABSDATA	34	25	26
	INDX	74	56	24
3-6-2016	ABSDATA	34	25	26
	INDX	74	56	24
2-6-2016	ABSDATA	34	25	26
	INDX	74	55	26
1-6-2016	ABSDATA	34	25	26
	INDX	74	55	26
31-5-2016	ABSDATA	34	25	26
	INDX	74	55	26
30-5-2016	ABSDATA	34	25	26
	INDX	74	55	26
29-5-2016	ABSDATA	34	25	26
	INDX	74	55	26

Weekly SLA Customer Report

Customer DFD Production
 Database ID 39



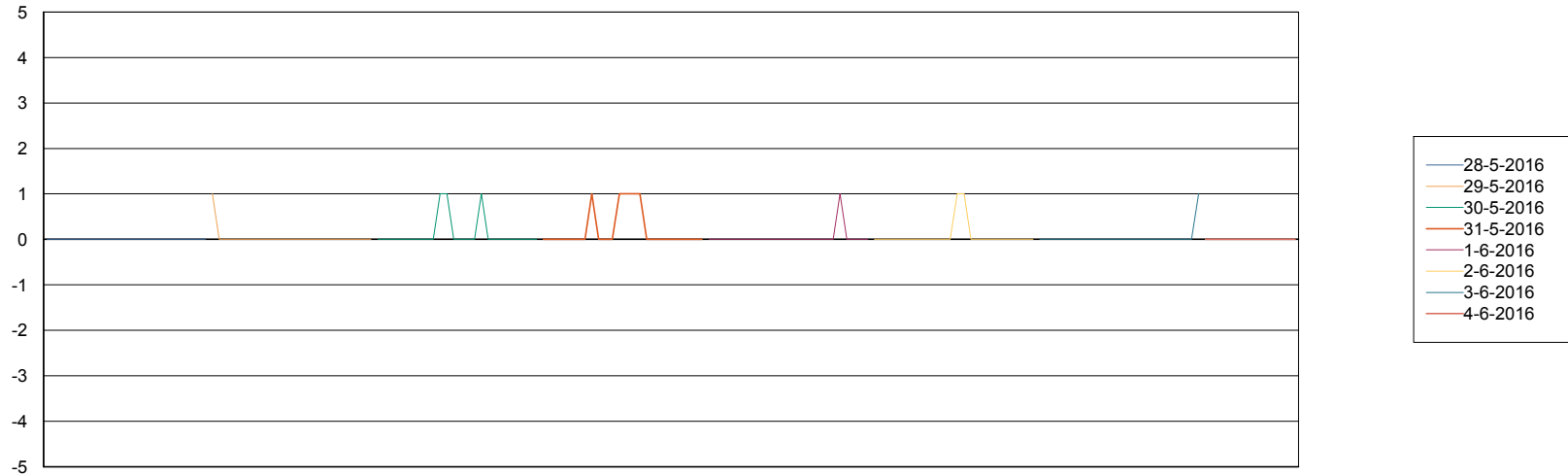
=====
 DATABASE TABLESPACES DFDDDBI_Production
 =====

TOTAL DATABASE SIZE PER TABLESPACE

Date	Tablespace Name	Filesize (Gb)	Usedsize (Gb)	Percentage free
4-6-2016	ABSDATA	16	14	13
	INDX	20	14	30
3-6-2016	ABSDATA	16	14	13
	INDX	20	14	30
2-6-2016	ABSDATA	16	14	13
	INDX	20	14	30
1-6-2016	ABSDATA	16	14	13
	INDX	20	14	30
31-5-2016	ABSDATA	16	14	13
	INDX	20	14	30
30-5-2016	ABSDATA	16	14	13
	INDX	20	14	30
29-5-2016	ABSDATA	16	14	13
	INDX	20	14	30

=====
 STANDBY DATABASE HEALTH DFD Production
 =====

Recovery lag for last 7 days



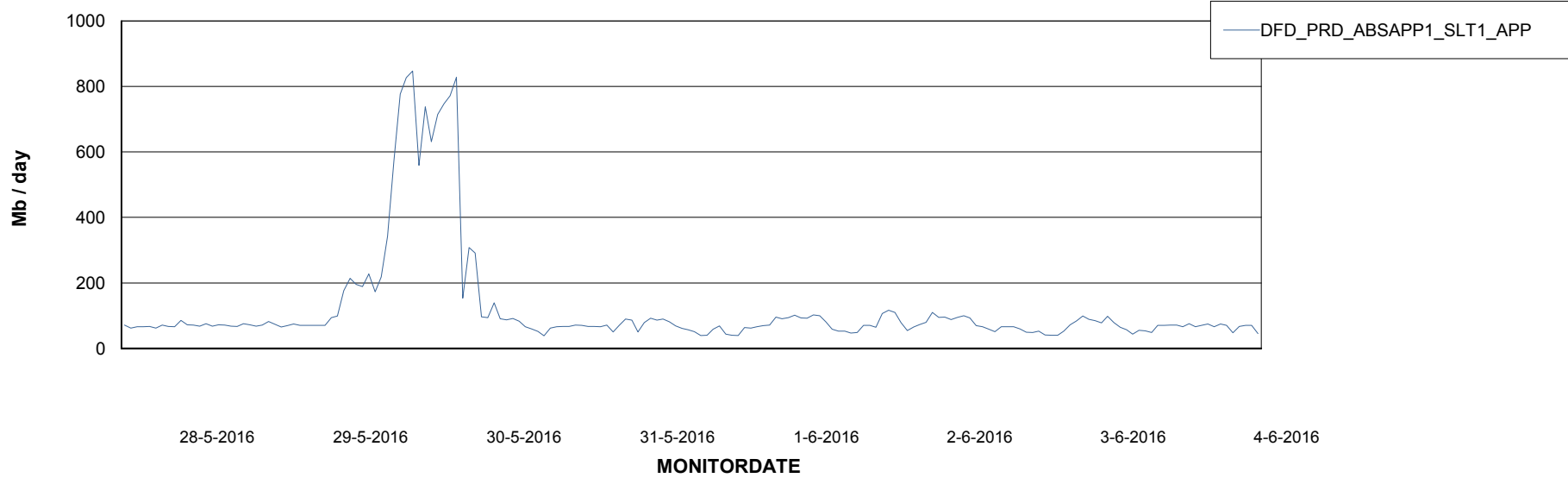
Weekly SLA Customer Report

Customer DFD Production
Database ID 39



=====
ABSolute Application Server Services
=====

Avg memory used per ABS Server Service



Weekly SLA Customer Report

Customer DFD Production
Database ID 39



=====
ABSolute Application ReportServer Services
=====

Avg memory used per ReportServer Service

