

# Weekly SLA Customer Report

Customer NIX\_Production  
 Database ID 51



=====  
 HARDDISK USAGE NIX\_PRD\_ABSAPP2  
 =====

	Total disk space on C (GB)	Free disk space on C (GB)
28-5-2016	200	34
27-5-2016	200	38
26-5-2016	200	42
25-5-2016	200	47
24-5-2016	200	52
23-5-2016	200	55
22-5-2016	200	59

=====  
 HARDDISK USAGE NIX\_PRD\_ABSWEB01  
 =====

	Total disk space on C (GB)	Free disk space on C (GB)	Free disk space on E (GB)
28-5-2016	300	277	0
27-5-2016	300	277	0
26-5-2016	300	277	0
25-5-2016	300	277	0
24-5-2016	300	277	0
23-5-2016	300	277	0
22-5-2016	300	277	0

# Weekly SLA Customer Report

Customer      NIX\_Production  
 Database ID    51



=====  
 HARDDISK USAGE    NIX\_PRD\_ORACLE\_BI1  
 =====

	Total disk space on C (GB)	Free disk space on C (GB)	Total disk space on E (GB)	Free disk space on E (GB)	Total disk space on F (GB)	Free disk space on F (GB)	Total disk space on G (GB)	Free disk space on G (GB)
28-5-2016	279	66	558	202	279	179	558	141
27-5-2016	279	66	558	203	279	179	558	127
26-5-2016	279	66	558	205	279	179	558	134
25-5-2016	279	66	558	207	279	179	558	141
24-5-2016	279	66	558	209	279	179	558	148
23-5-2016	279	66	558	210	279	179	558	154
22-5-2016	279	67	558	212	279	179	558	161

=====  
 HARDDISK USAGE    NIX\_PRD\_ORCDB1  
 =====

	Total disk space on C (GB)	Free disk space on C (GB)	Total disk space on E (GB)	Free disk space on E (GB)	Total disk space on F (GB)	Free disk space on F (GB)	Total disk space on G (GB)	Free disk space on G (GB)
28-5-2016	279	74	558	465	558	457	279	52
27-5-2016	279	74	558	465	558	457	279	54
26-5-2016	279	74	558	465	558	457	279	56
25-5-2016	279	74	558	465	558	457	279	58
24-5-2016	279	74	558	465	558	458	279	60
23-5-2016	279	74	558	465	558	458	279	62
22-5-2016	279	74	558	465	558	458	279	63

## Weekly SLA Customer Report

Customer      NIX\_Production  
 Database ID    51



=====  
 HARDDISK USAGE    NIX\_PRD\_ORCDB2  
 =====

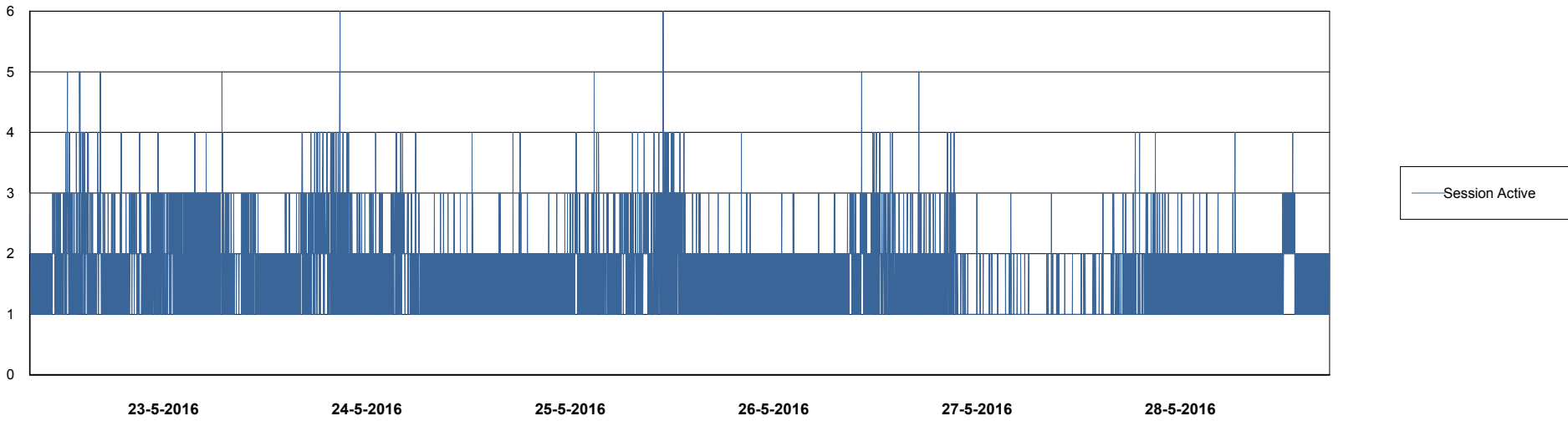
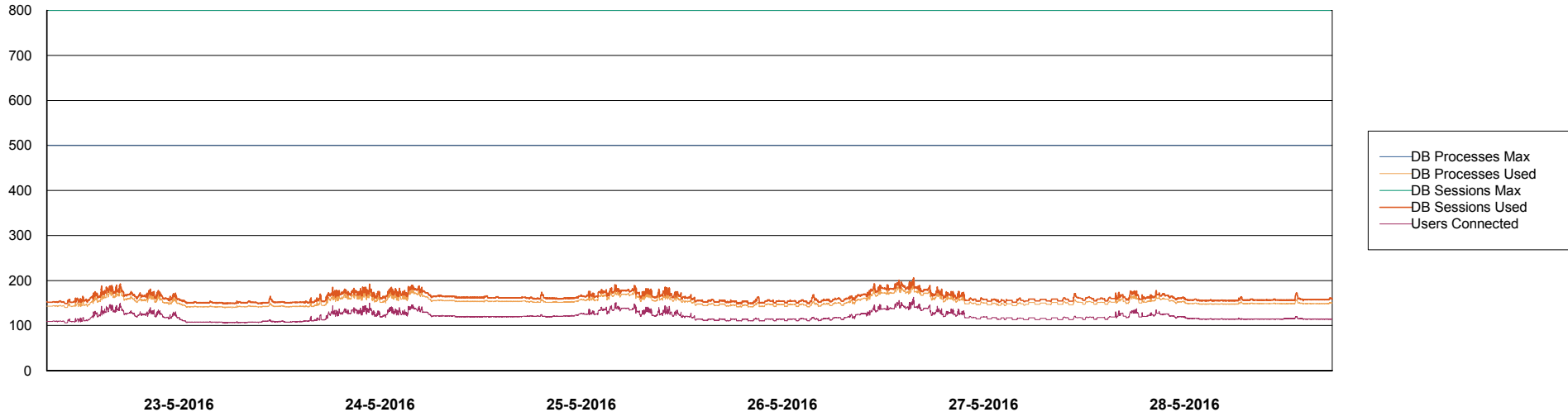
	Total disk space on C (GB)	Free disk space on C (GB)	Total disk space on E (GB)	Free disk space on E (GB)	Total disk space on F (GB)	Free disk space on F (GB)	Total disk space on G (GB)	Free disk space on G (GB)
28-5-2016	279	74	558	465	558	457	279	52
27-5-2016	279	74	558	465	558	457	279	54
26-5-2016	279	74	558	465	558	457	279	56
25-5-2016	279	74	558	465	558	457	279	58
24-5-2016	279	74	558	465	558	458	279	60
23-5-2016	279	74	558	465	558	458	279	62
22-5-2016	279	74	558	465	558	458	279	63

# Weekly SLA Customer Report

Customer NIX\_Production  
Database ID 51



DATABASE PERFORMANCE NIXDB\_Production

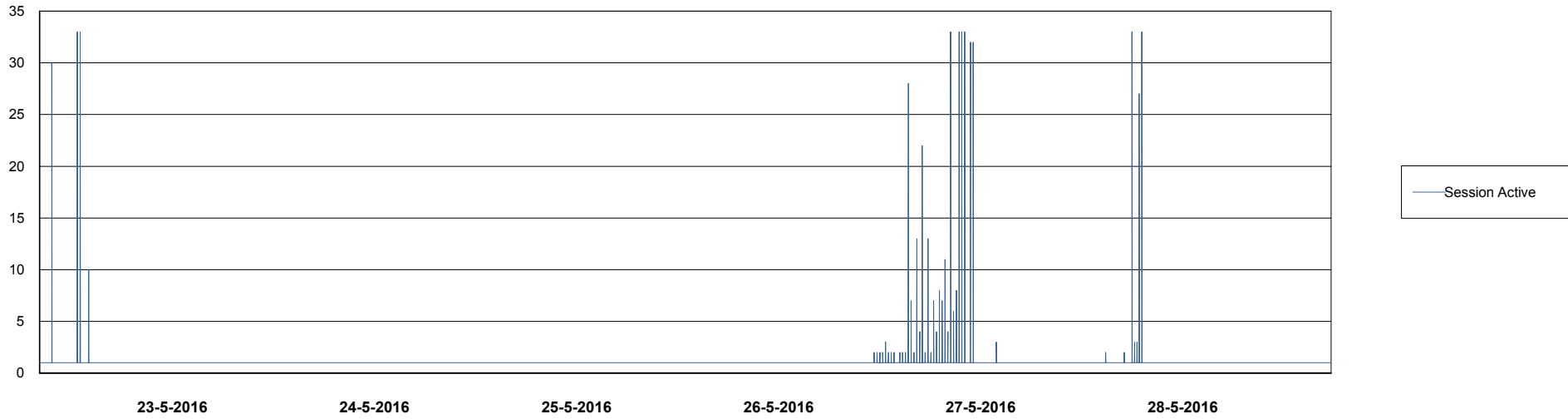
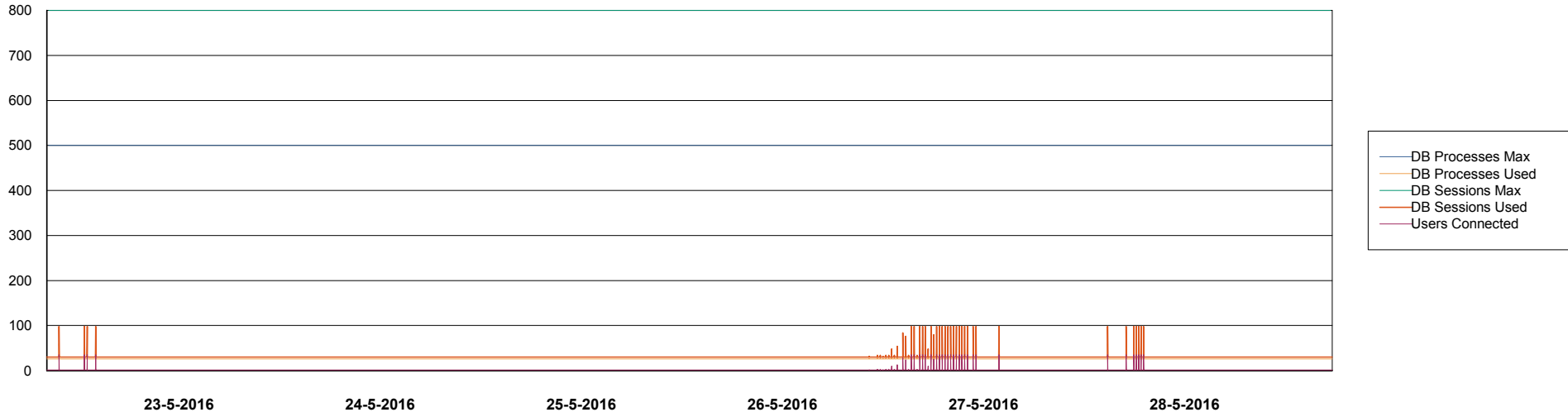


# Weekly SLA Customer Report

Customer NIX\_Production  
Database ID 51



=====  
DATABASE PERFORMANCE NIXDB\_Standby  
=====



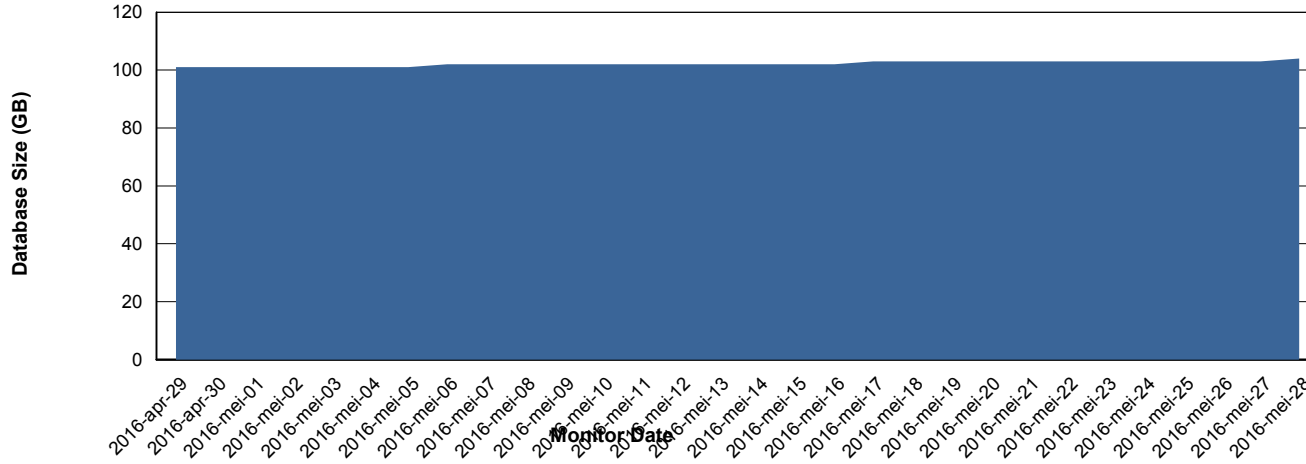
# Weekly SLA Customer Report

Customer NIX\_Production  
 Database ID 51



=====  
 DATABASE SIZE NIXDB\_Production  
 =====

## Database growth over last month



=====  
 DATABASE TABLESPACES NIXDB\_Production  
 =====

### TOTAL DATABASE SIZE PER TABLESPACE

Date	Tablespace Name	Filesize (Gb)	Usedsize (Gb)	Percentage free
28-5-2016	ABSDATA	50	40	20
	INDX	100	62	38
27-5-2016	ABSDATA	50	40	20
	INDX	100	62	38
26-5-2016	ABSDATA	50	40	20
	INDX	100	62	38
25-5-2016	ABSDATA	50	40	20
	INDX	100	62	38
24-5-2016	ABSDATA	50	40	20
	INDX	100	62	38
23-5-2016	ABSDATA	50	40	20
	INDX	100	62	38
22-5-2016	ABSDATA	50	40	20
	INDX	100	62	38

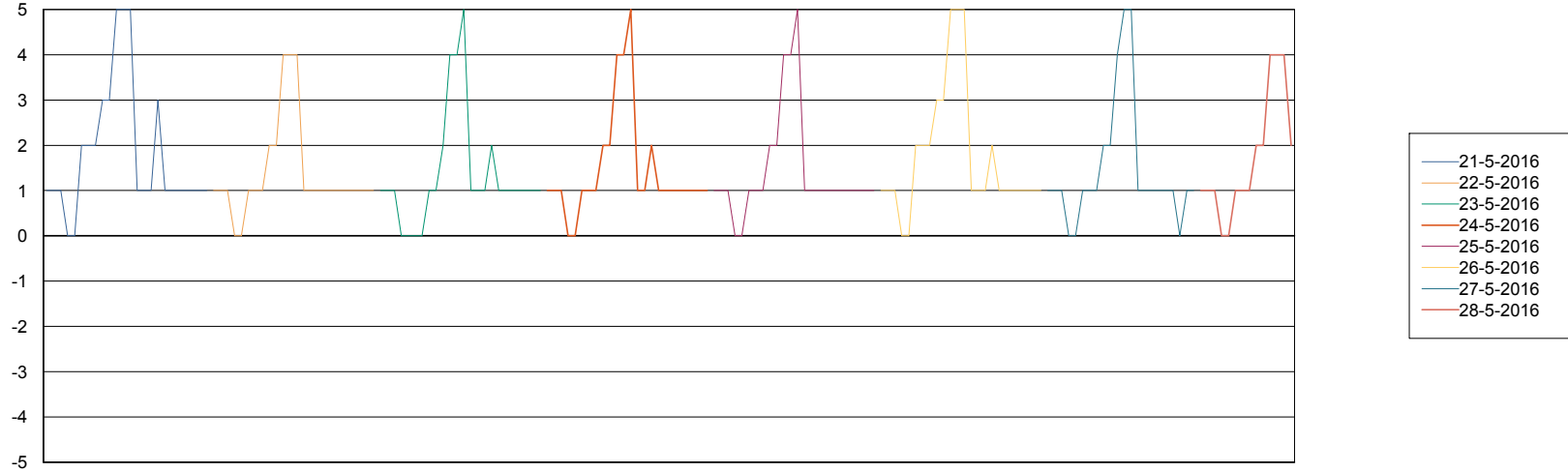
# Weekly SLA Customer Report

Customer NIX\_Production  
Database ID 51



=====  
STANDBY DATABASE HEALTH NIX\_Production  
=====

### Recovery lag for last 7 days



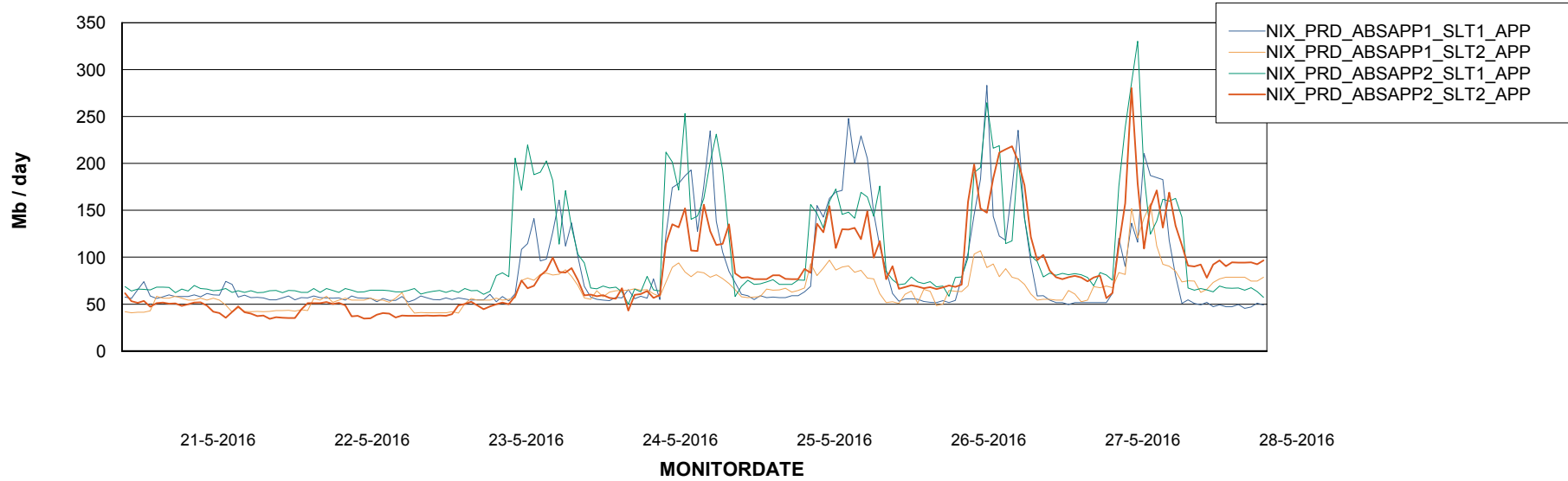
# Weekly SLA Customer Report

Customer NIX\_Production  
Database ID 51



=====  
ABSolute Application Server Services  
=====

### Avg memory used per ABS Server Service



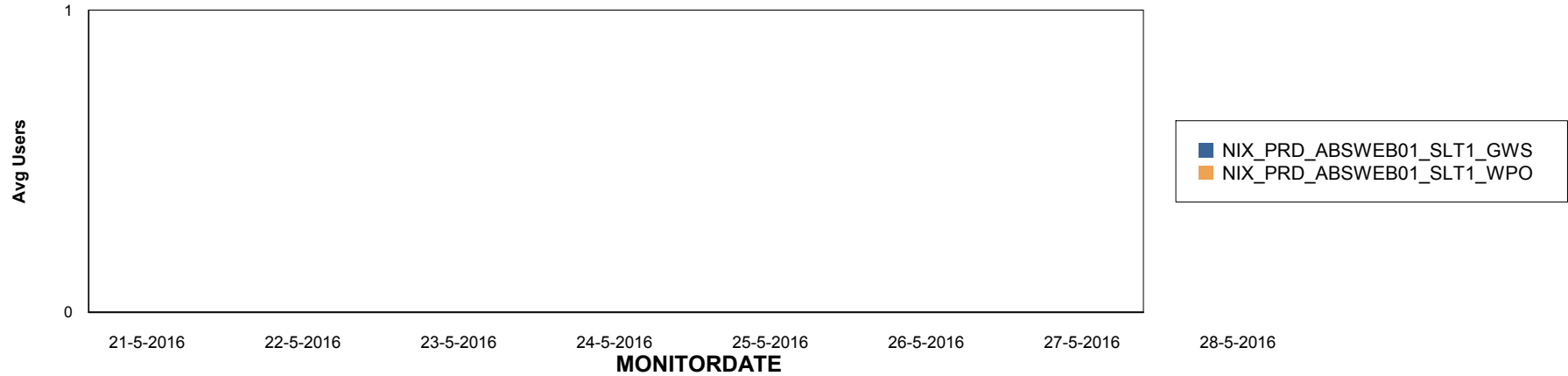
# Weekly SLA Customer Report

Customer NIX\_Production  
Database ID 51

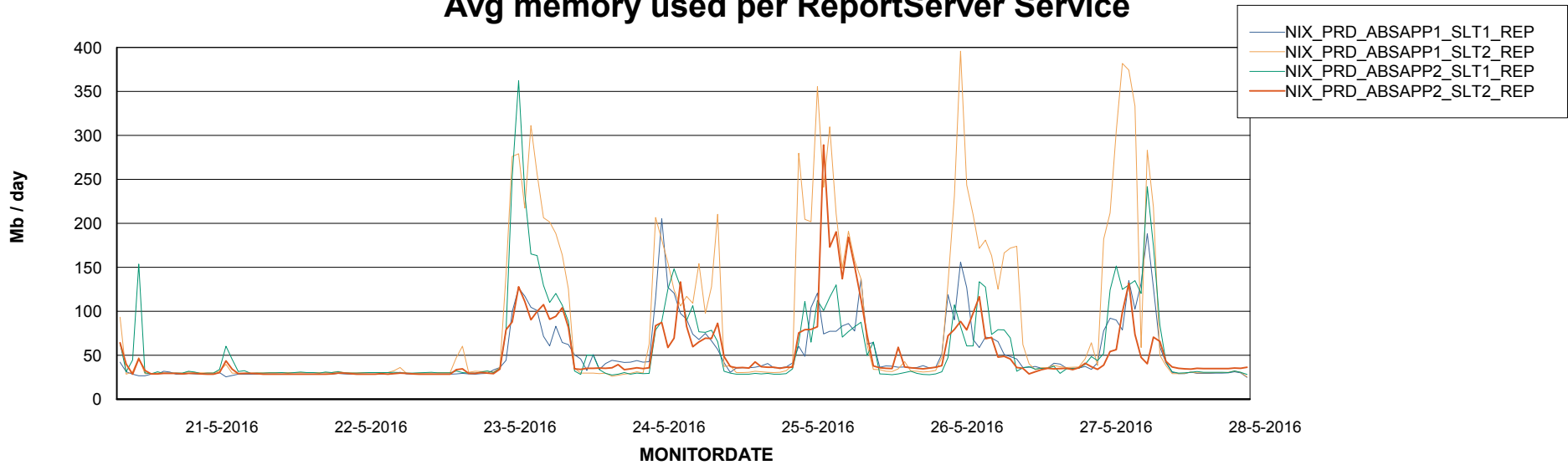


=====  
ABSolute Application ReportServer Services  
=====

## Disaster per ReportServer



## Avg memory used per ReportServer Service



# Weekly SLA Customer Report

Customer NIX\_Production  
Database ID 51



## Disaster per ABS component

