

# Weekly SLA Customer Report

Customer NIX\_Production  
 Database ID 51



=====  
 HARDDISK USAGE NIX\_PRD\_ABSAPP2  
 =====

	Total disk space on C (GB)	Free disk space on C (GB)
21-5-2016	200	64
20-5-2016	200	67
19-5-2016	200	71
18-5-2016	200	76
17-5-2016	200	80
16-5-2016	200	84
15-5-2016	200	88

=====  
 HARDDISK USAGE NIX\_PRD\_ABSWEB01  
 =====

	Total disk space on C (GB)	Free disk space on C (GB)
21-5-2016	300	277
20-5-2016	300	277
19-5-2016	300	277
18-5-2016	300	277
17-5-2016	300	277
16-5-2016	300	277
15-5-2016	300	277

## Weekly SLA Customer Report

Customer      NIX\_Production  
Database ID    51



=====  
HARDDISK USAGE    NIX\_PRD\_ORACLE\_B11  
=====

	Total disk space on C (GB)	Free disk space on C (GB)	Total disk space on E (GB)	Free disk space on E (GB)	Total disk space on F (GB)	Free disk space on F (GB)	Total disk space on G (GB)	Free disk space on G (GB)
21-5-2016	279	67	558	214	279	179	558	158
20-5-2016	279	67	558	216	279	179	558	144
19-5-2016	279	67	558	219	279	179	558	151
18-5-2016	279	67	558	222	279	179	558	157
17-5-2016	279	66	558	227	279	179	558	164
16-5-2016	279	67	558	230	279	179	558	170
15-5-2016	279	67	558	231	279	179	558	177

=====  
HARDDISK USAGE    NIX\_PRD\_ORCDB1  
=====

	Total disk space on C (GB)	Free disk space on C (GB)	Total disk space on E (GB)	Free disk space on E (GB)	Total disk space on F (GB)	Free disk space on F (GB)	Total disk space on G (GB)	Free disk space on G (GB)
21-5-2016	279	75	558	465	558	457	279	65
20-5-2016	279	74	558	465	558	457	279	67
19-5-2016	279	74	558	461	558	431	279	69
18-5-2016	279	74	558	458	558	413	279	71
17-5-2016	279	74	558	459	558	414	279	73
16-5-2016	279	75	558	459	558	415	279	75
15-5-2016	279	75	558	459	558	416	279	76

## Weekly SLA Customer Report

Customer      NIX\_Production  
 Database ID    51



=====

HARDDISK USAGE    NIX\_PRD\_ORCDB2

=====

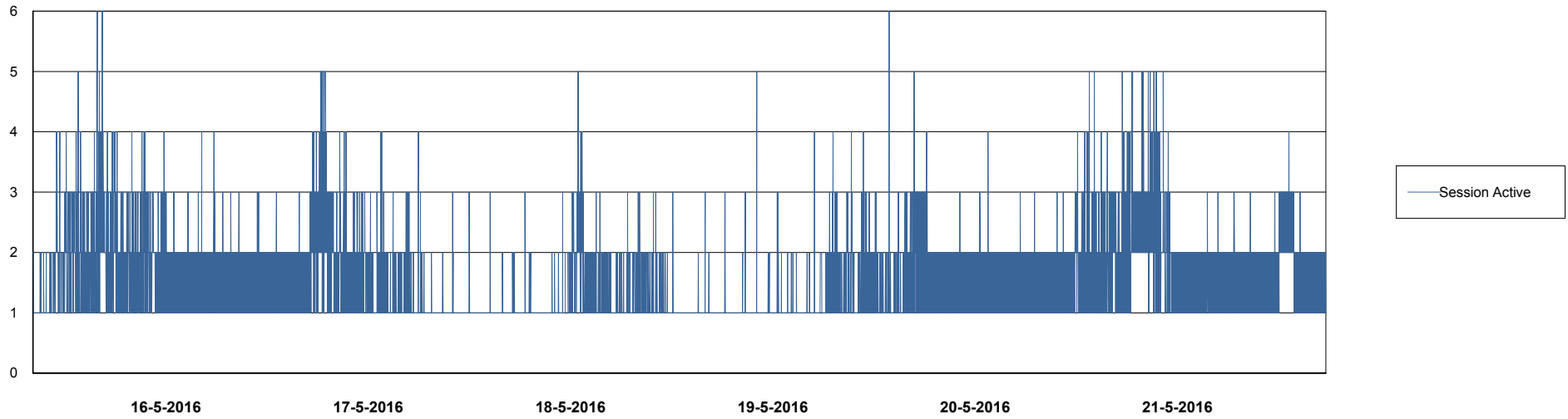
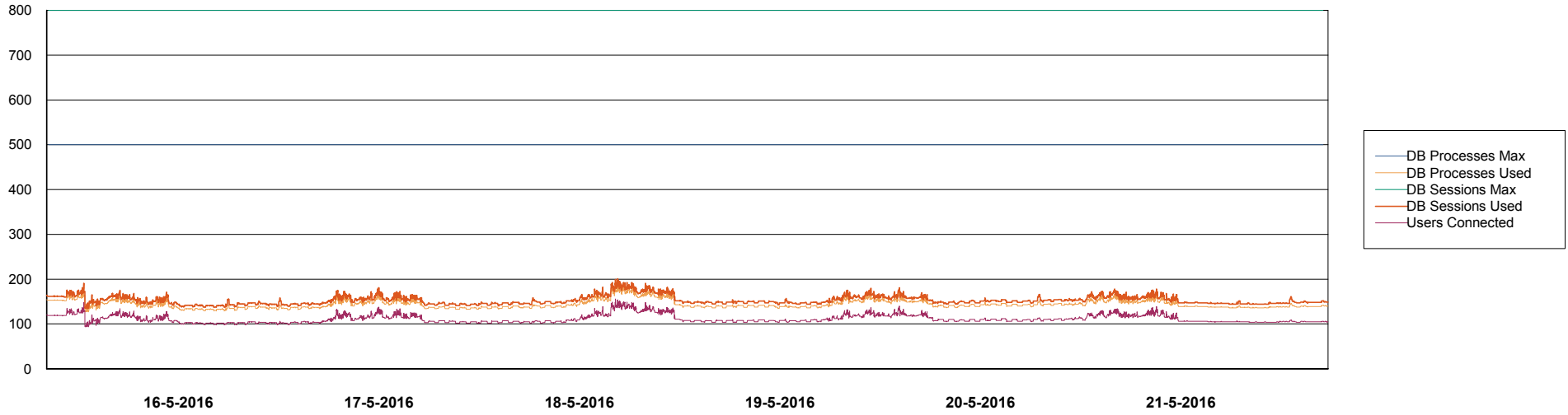
	Total disk space on C (GB)	Free disk space on C (GB)	Total disk space on E (GB)	Free disk space on E (GB)	Total disk space on F (GB)	Free disk space on F (GB)	Total disk space on G (GB)	Free disk space on G (GB)
21-5-2016	279	75	558	465	558	457	279	65
20-5-2016	279	74	558	465	558	457	279	67
19-5-2016	279	74	558	461	558	431	279	69
18-5-2016	279	74	558	458	558	413	279	71
17-5-2016	279	74	558	459	558	414	279	73
16-5-2016	279	75	558	459	558	415	279	75
15-5-2016	279	75	558	459	558	416	279	76

# Weekly SLA Customer Report

Customer NIX\_Production  
Database ID 51



## DATABASE PERFORMANCE NIXDB\_Production

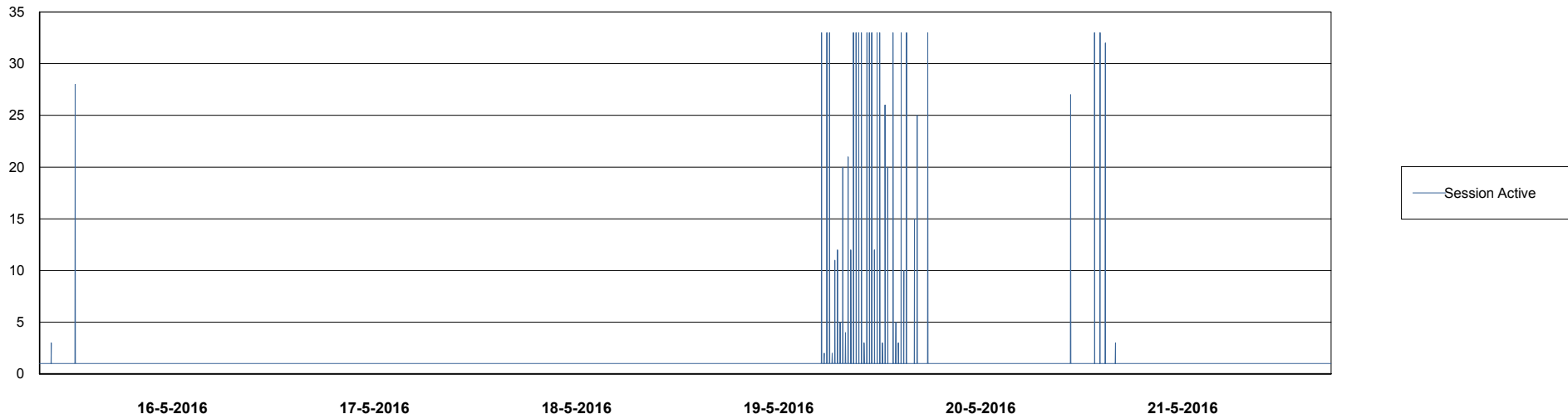
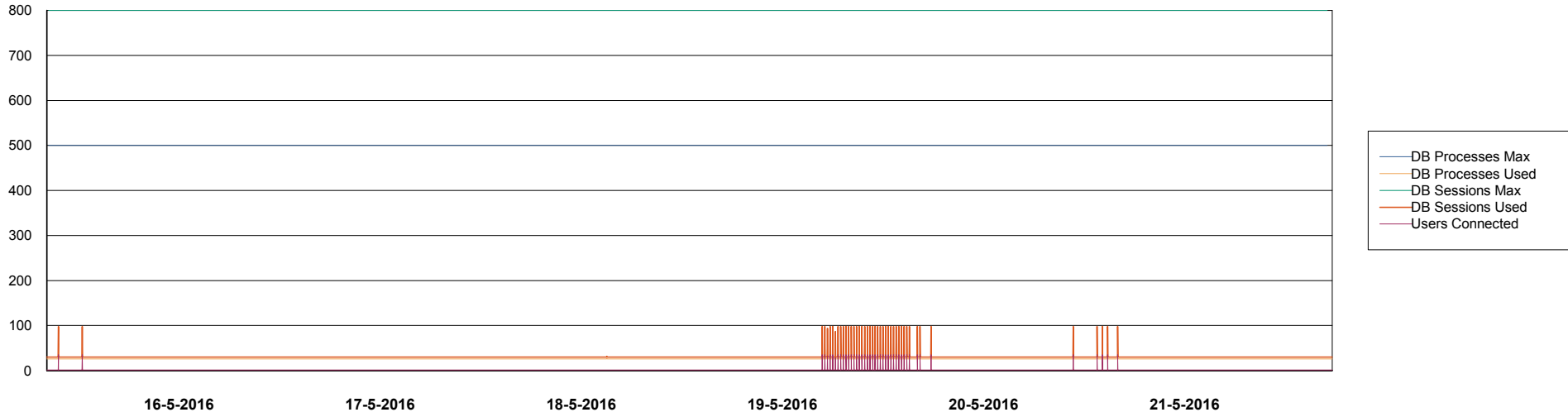


# Weekly SLA Customer Report

Customer NIX\_Production  
Database ID 51



## DATABASE PERFORMANCE NIXDB\_Standby



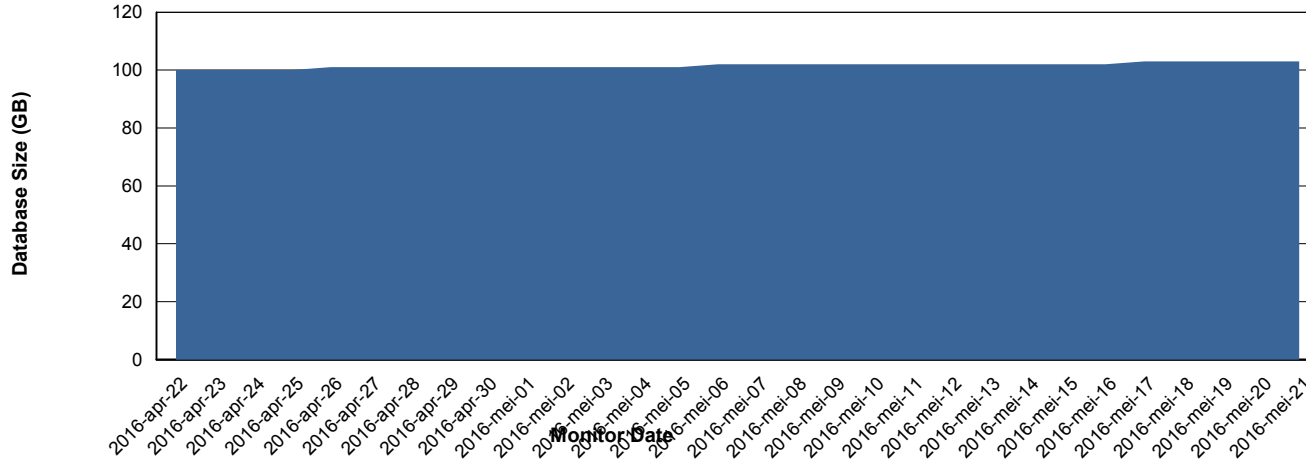
# Weekly SLA Customer Report

Customer NIX\_Production  
 Database ID 51



=====  
 DATABASE SIZE NIXDB\_Production  
 =====

## Database growth over last month



=====  
 DATABASE TABLESPACES NIXDB\_Production  
 =====

### TOTAL DATABASE SIZE PER TABLESPACE

Date	Tablespace Name	Filesize (Gb)	Usedsize (Gb)	Percentage free
21-5-2016	ABSDATA	50	40	20
	INDX	100	62	38
20-5-2016	ABSDATA	50	40	20
	INDX	100	62	38
19-5-2016	ABSDATA	50	40	20
	INDX	100	62	38
18-5-2016	ABSDATA	50	40	20
	INDX	100	62	38
17-5-2016	ABSDATA	50	40	20
	INDX	100	62	38
16-5-2016	ABSDATA	50	40	20
	INDX	100	62	38
15-5-2016	ABSDATA	50	39	22
	INDX	100	62	38

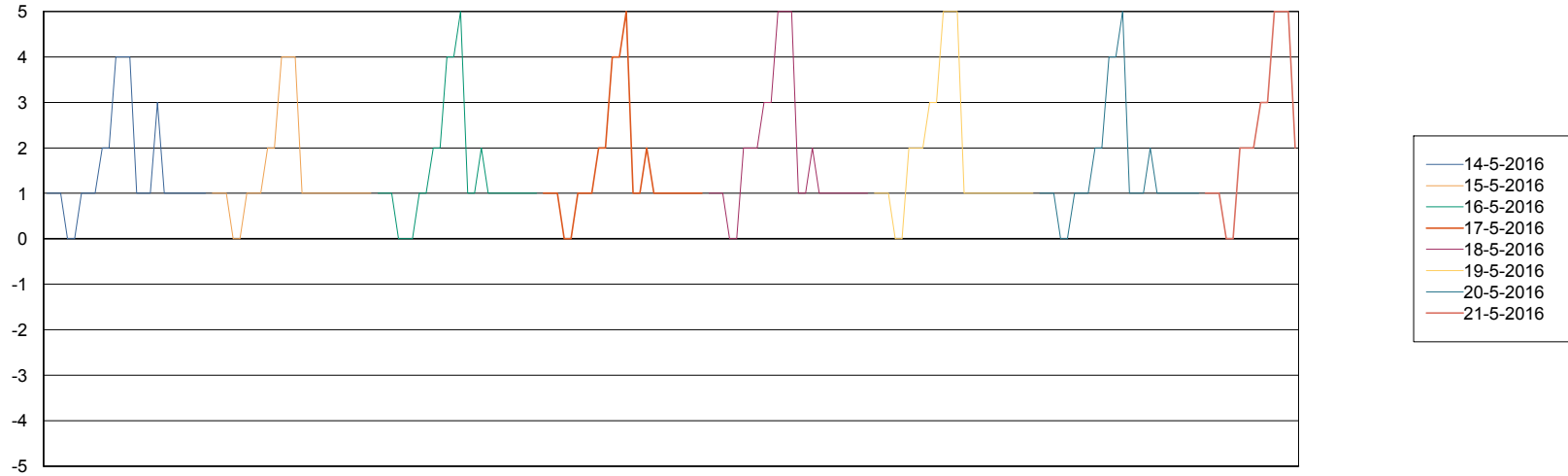
# Weekly SLA Customer Report

Customer NIX\_Production  
Database ID 51



=====  
STANDBY DATABASE HEALTH NIX\_Production  
=====

### Recovery lag for last 7 days



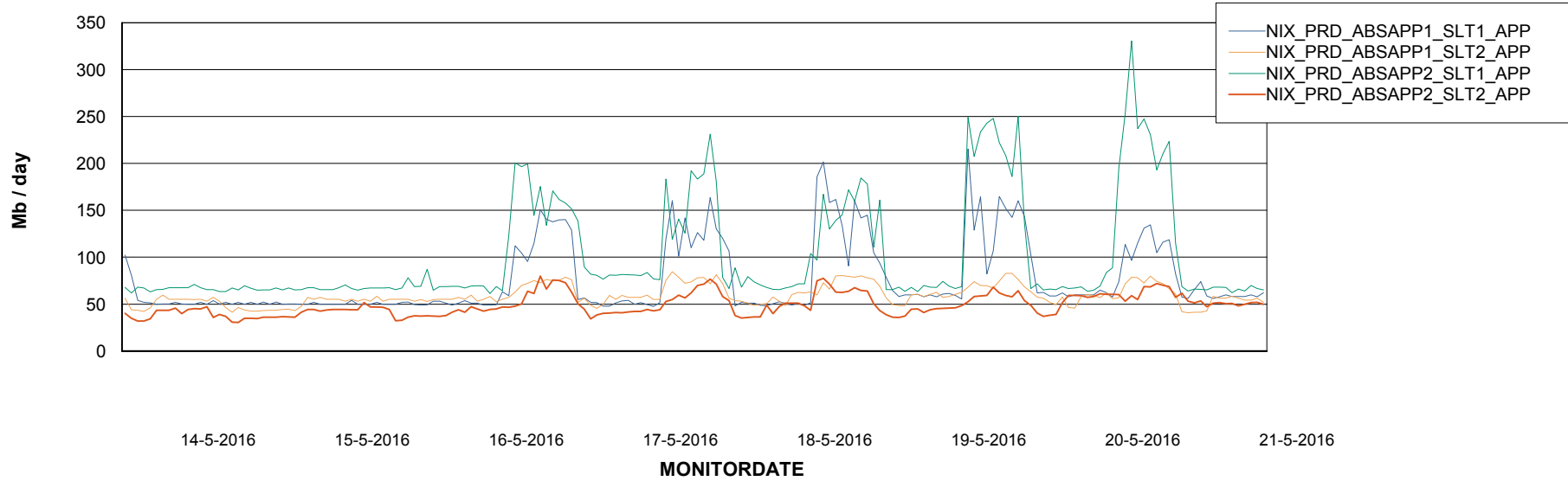
# Weekly SLA Customer Report

Customer NIX\_Production  
Database ID 51



=====  
ABSolute Application Server Services  
=====

## Avg memory used per ABS Server Service



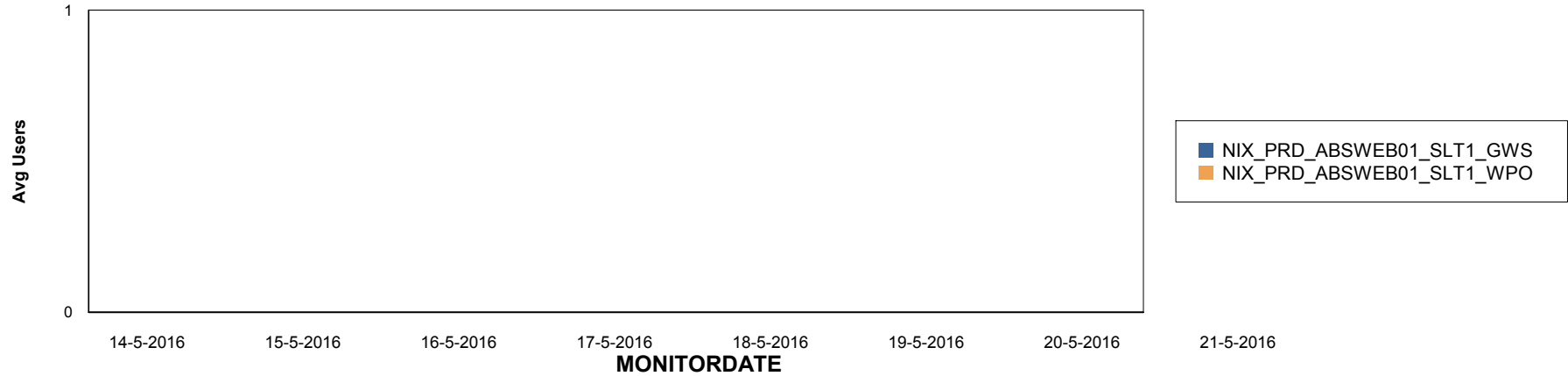
# Weekly SLA Customer Report

Customer NIX\_Production  
Database ID 51

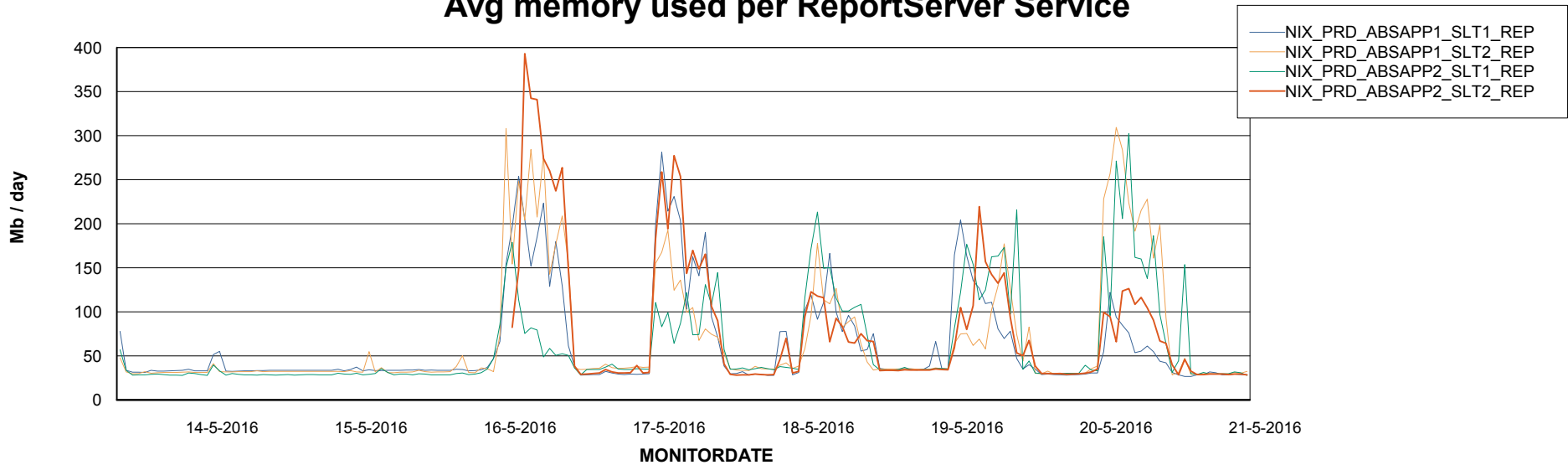


=====  
ABSolute Application ReportServer Services  
=====

## Disaster per ReportServer



## Avg memory used per ReportServer Service



# Weekly SLA Customer Report

Customer NIX\_Production  
Database ID 51



## Disaster per ABS component

