

Weekly SLA Customer Report

Customer NIX_Production
 Database ID 51



=====
 HARDDISK USAGE NIX_PRD_ABSAPP2
 =====

	Total disk space on C (GB)	Free disk space on C (GB)
14-5-2016	200	92
13-5-2016	200	95
12-5-2016	200	98
11-5-2016	200	103
10-5-2016	200	107
9-5-2016	200	111
8-5-2016	200	115

=====
 HARDDISK USAGE NIX_PRD_ABSWEB01
 =====

	Total disk space on C (GB)	Free disk space on C (GB)
14-5-2016	300	277
13-5-2016	300	277
12-5-2016	300	277
11-5-2016	300	277
10-5-2016	300	278
9-5-2016	300	278
8-5-2016	300	278

Weekly SLA Customer Report

Customer NIX_Production
 Database ID 51



=====
 HARDDISK USAGE NIX_PRD_ORACLE_B11
 =====

	Total disk space on C (GB)	Free disk space on C (GB)	Total disk space on E (GB)	Free disk space on E (GB)	Total disk space on F (GB)	Free disk space on F (GB)	Total disk space on G (GB)	Free disk space on G (GB)
14-5-2016	279	67	558	233	279	179	558	175
13-5-2016	279	67	558	234	279	179	558	160
12-5-2016	279	67	558	235	279	179	558	167
11-5-2016	279	67	558	237	279	179	558	174
10-5-2016	279	67	558	239	279	179	558	180
9-5-2016	279	67	558	240	279	179	558	187
8-5-2016	279	67	558	242	279	179	558	193

=====
 HARDDISK USAGE NIX_PRD_ORCDB1
 =====

	Total disk space on C (GB)	Free disk space on C (GB)	Total disk space on E (GB)	Free disk space on E (GB)	Total disk space on F (GB)	Free disk space on F (GB)	Total disk space on G (GB)	Free disk space on G (GB)
14-5-2016	279	75	558	459	558	418	279	78
13-5-2016	279	75	558	459	558	419	279	79
12-5-2016	279	75	558	459	558	424	279	81
11-5-2016	279	75	558	459	558	439	279	83
10-5-2016	279	75	558	464	558	457	279	85
9-5-2016	279	75	558	465	558	457	279	88
8-5-2016	279	75	558	465	558	457	279	89

Weekly SLA Customer Report

Customer NIX_Production
Database ID 51



=====
HARDDISK USAGE NIX_PRD_ORCDB2
=====

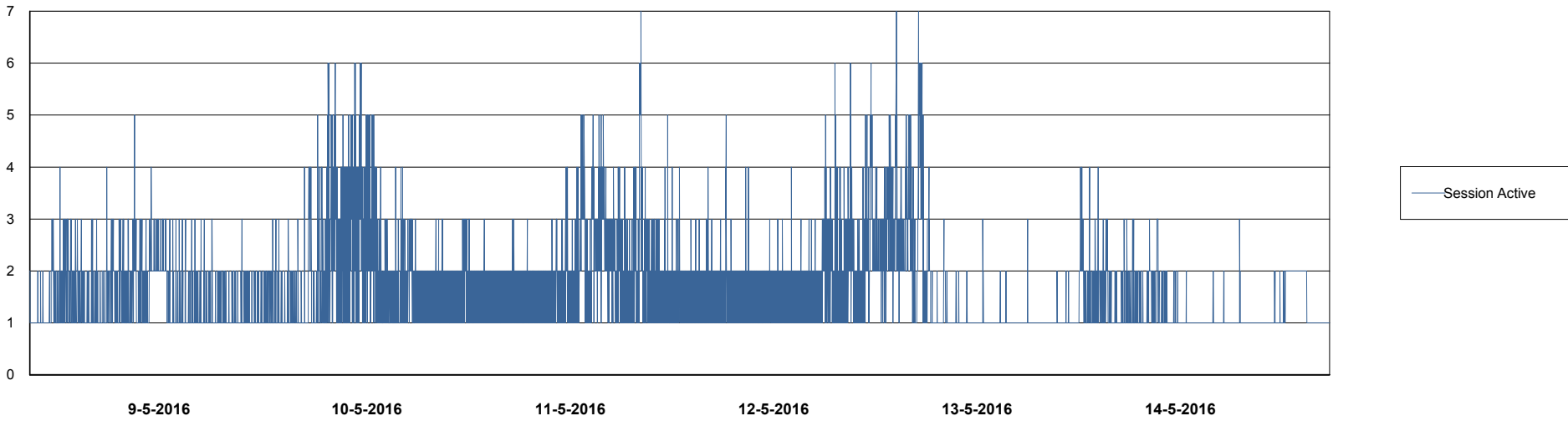
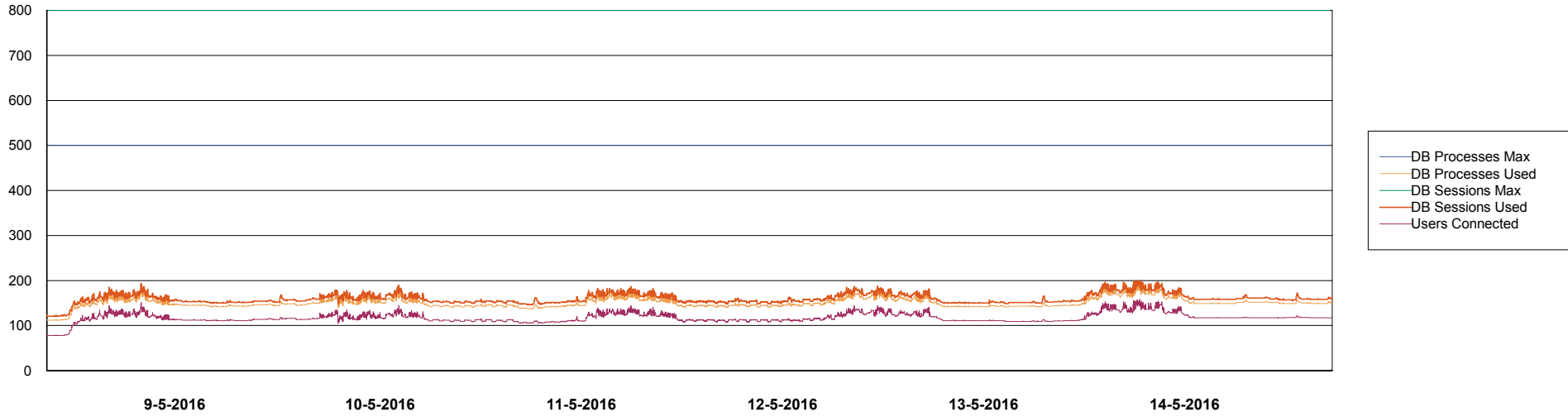
	Total disk space on C (GB)	Free disk space on C (GB)	Total disk space on E (GB)	Free disk space on E (GB)	Total disk space on F (GB)	Free disk space on F (GB)	Total disk space on G (GB)	Free disk space on G (GB)
14-5-2016	279	75	558	459	558	418	279	78
13-5-2016	279	75	558	459	558	419	279	79
12-5-2016	279	75	558	459	558	424	279	81
11-5-2016	279	75	558	459	558	439	279	83
10-5-2016	279	75	558	464	558	457	279	85
9-5-2016	279	75	558	465	558	457	279	88
8-5-2016	279	75	558	465	558	457	279	89

Weekly SLA Customer Report

Customer NIX_Production
Database ID 51



DATABASE PERFORMANCE NIXDB_Production

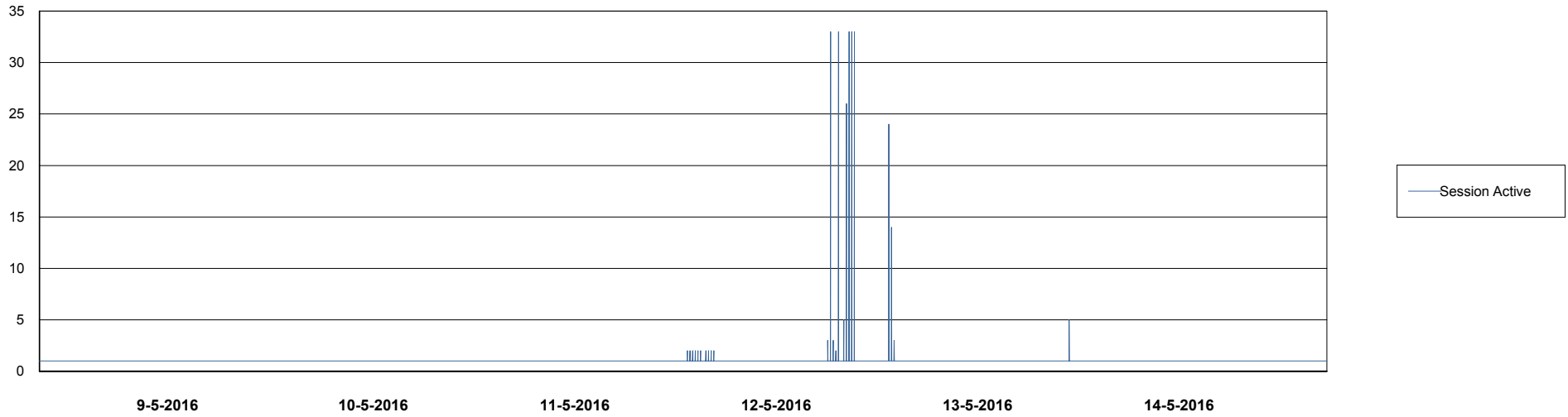
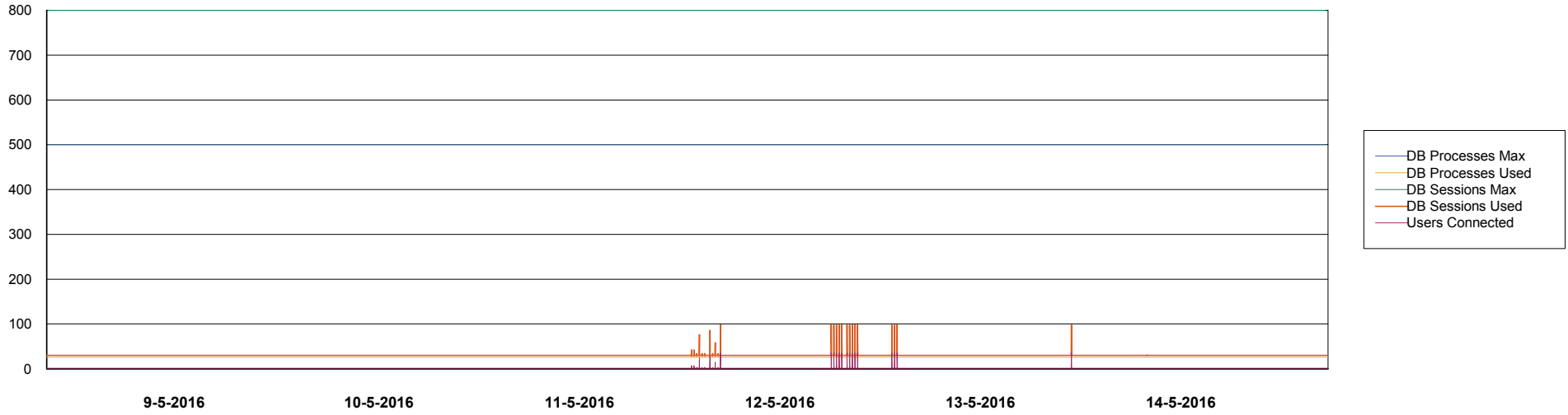


Weekly SLA Customer Report

Customer NIX_Production
Database ID 51



DATABASE PERFORMANCE NIXDB_Standby



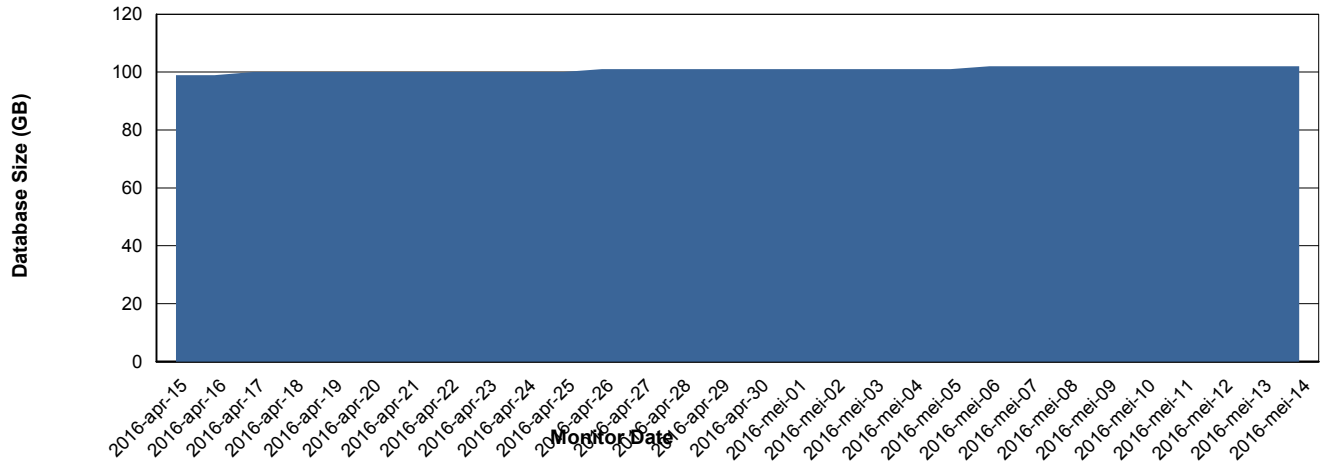
Weekly SLA Customer Report

Customer NIX_Production
 Database ID 51



=====
 DATABASE SIZE NIXDB_Production
 =====

Database growth over last month



=====
 DATABASE TABLESPACES NIXDB_Production
 =====

TOTAL DATABASE SIZE PER TABLESPACE

Date	Tablespace Name	Filesize (Gb)	Usedsize (Gb)	Percentage free
14-5-2016	ABSDATA	50	39	22
	INDX	100	61	39
13-5-2016	ABSDATA	50	39	22
	INDX	100	61	39
12-5-2016	ABSDATA	50	39	22
	INDX	100	61	39
11-5-2016	ABSDATA	50	39	22
	INDX	100	61	39
10-5-2016	ABSDATA	50	39	22
	INDX	100	61	39
9-5-2016	ABSDATA	50	39	22
	INDX	100	61	39
8-5-2016	ABSDATA	50	39	22
	INDX	100	61	39

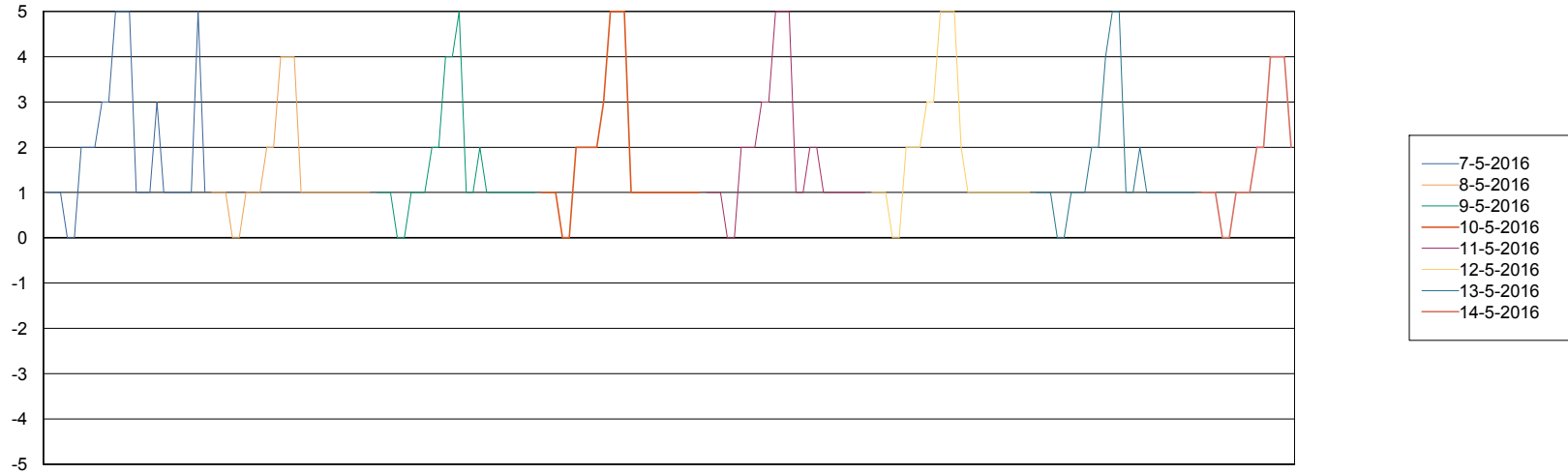
Weekly SLA Customer Report

Customer NIX_Production
Database ID 51



=====
STANDBY DATABASE HEALTH NIX_Production
=====

Recovery lag for last 7 days



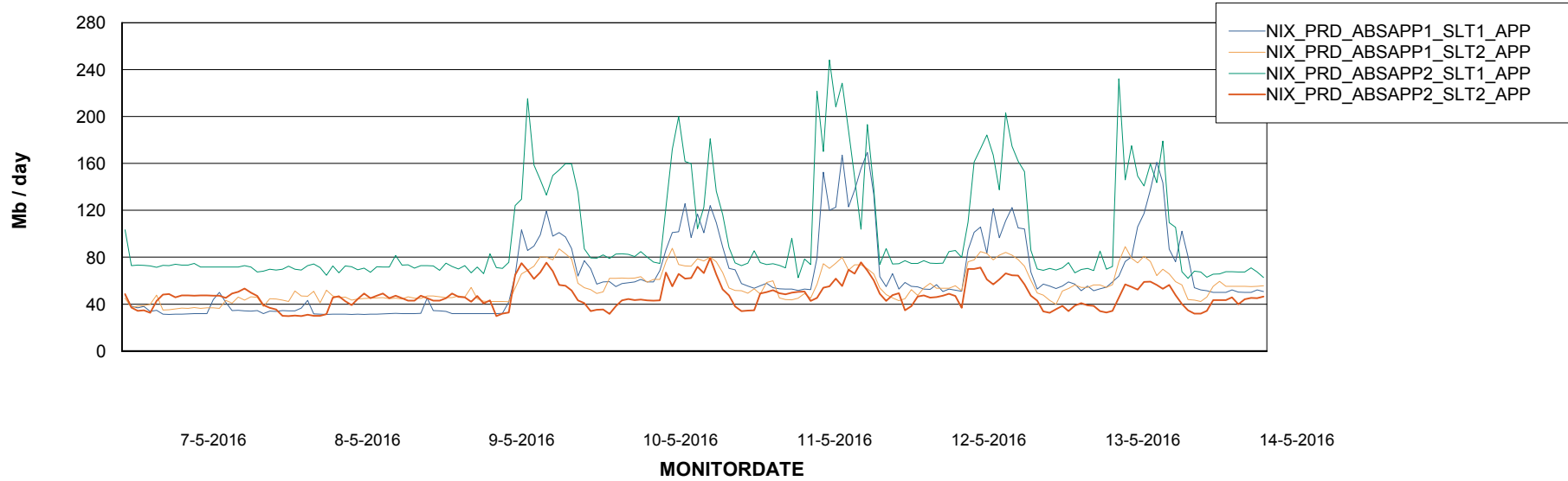
Weekly SLA Customer Report

Customer NIX_Production
Database ID 51



=====
ABSolute Application Server Services
=====

Avg memory used per ABS Server Service



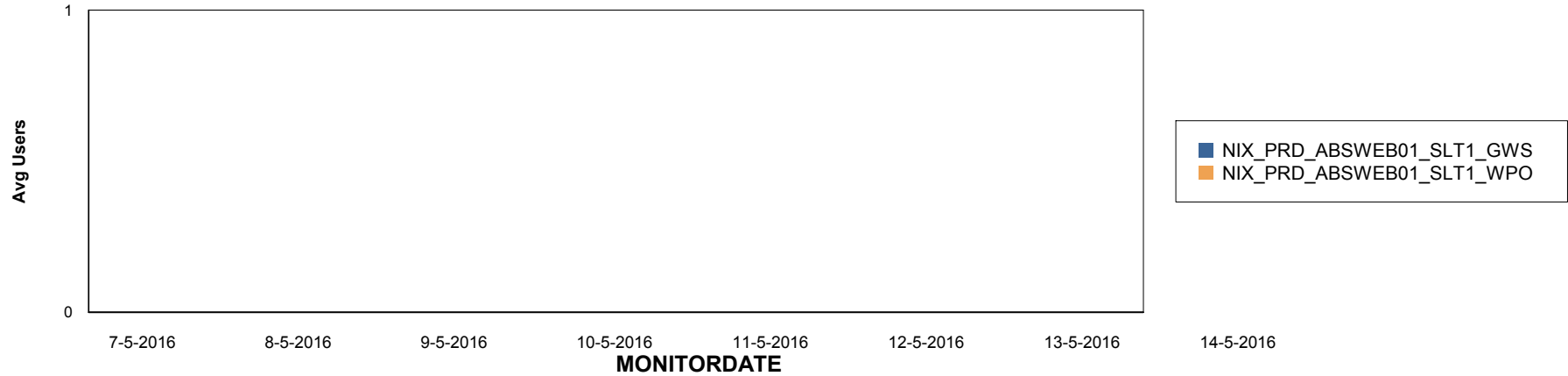
Weekly SLA Customer Report

Customer NIX_Production
Database ID 51

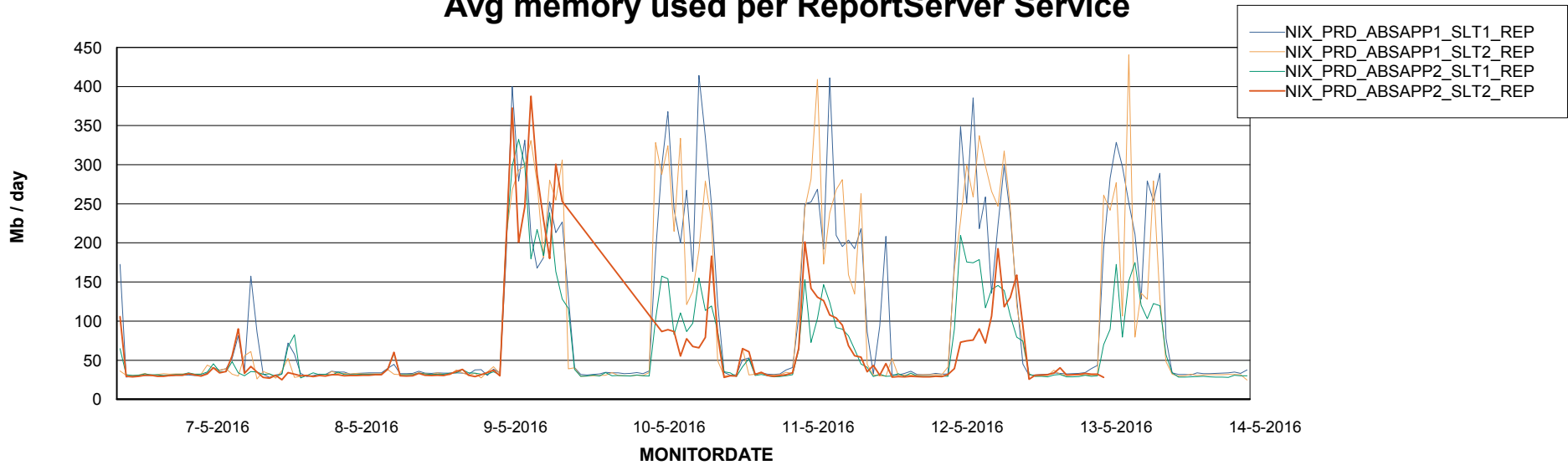


=====
ABSolute Application ReportServer Services
=====

Disaster per ReportServer



Avg memory used per ReportServer Service



Weekly SLA Customer Report

Customer NIX_Production
Database ID 51



Disaster per ABS component

