

Weekly SLA Customer Report

Customer NIX_Production
Database ID 51



=====
HARDDISK USAGE NIX_PRD_ABSAPP2
=====

	Total disk space on C (GB)	Free disk space on C (GB)
7-5-2016	200	120
6-5-2016	200	123
5-5-2016	200	127
4-5-2016	200	131
3-5-2016	200	135
2-5-2016	200	138
1-5-2016	200	142

=====
HARDDISK USAGE NIX_PRD_ABSWEB01
=====

	Total disk space on C (GB)	Free disk space on C (GB)
7-5-2016	300	278
6-5-2016	300	278
5-5-2016	300	278
4-5-2016	300	278
3-5-2016	300	278
2-5-2016	300	278
1-5-2016	300	278

Weekly SLA Customer Report

Customer NIX_Production
 Database ID 51



=====
 HARDDISK USAGE NIX_PRD_ORACLE_B11
 =====

	Total disk space on C (GB)	Free disk space on C (GB)	Total disk space on E (GB)	Free disk space on E (GB)	Total disk space on F (GB)	Free disk space on F (GB)	Total disk space on G (GB)	Free disk space on G (GB)
7-5-2016	279	67	558	244	279	179	558	190
6-5-2016	279	67	558	246	279	179	558	178
5-5-2016	279	67	558	248	279	178	558	184
4-5-2016	279	67	558	250	279	179	558	191
3-5-2016	279	68	558	240	279	177	558	198
2-5-2016	279	68	558	235	279	179	558	203
1-5-2016	279	68	558	236	279	179	558	209

=====
 HARDDISK USAGE NIX_PRD_ORCDB1
 =====

	Total disk space on C (GB)	Free disk space on C (GB)	Total disk space on E (GB)	Free disk space on E (GB)	Total disk space on F (GB)	Free disk space on F (GB)	Total disk space on G (GB)	Free disk space on G (GB)
7-5-2016	279	75	558	465	558	457	279	91
6-5-2016	279	75	558	465	558	457	279	92
5-5-2016	279	75	558	465	558	457	279	94
4-5-2016	279	75	558	465	558	457	279	96
3-5-2016	279	75	558	465	558	457	279	98
2-5-2016	279	75	558	465	558	457	279	100
1-5-2016	279	89	558	465	558	457	279	101

Weekly SLA Customer Report

Customer NIX_Production
 Database ID 51



=====
 HARDDISK USAGE NIX_PRD_ORCDB2
 =====

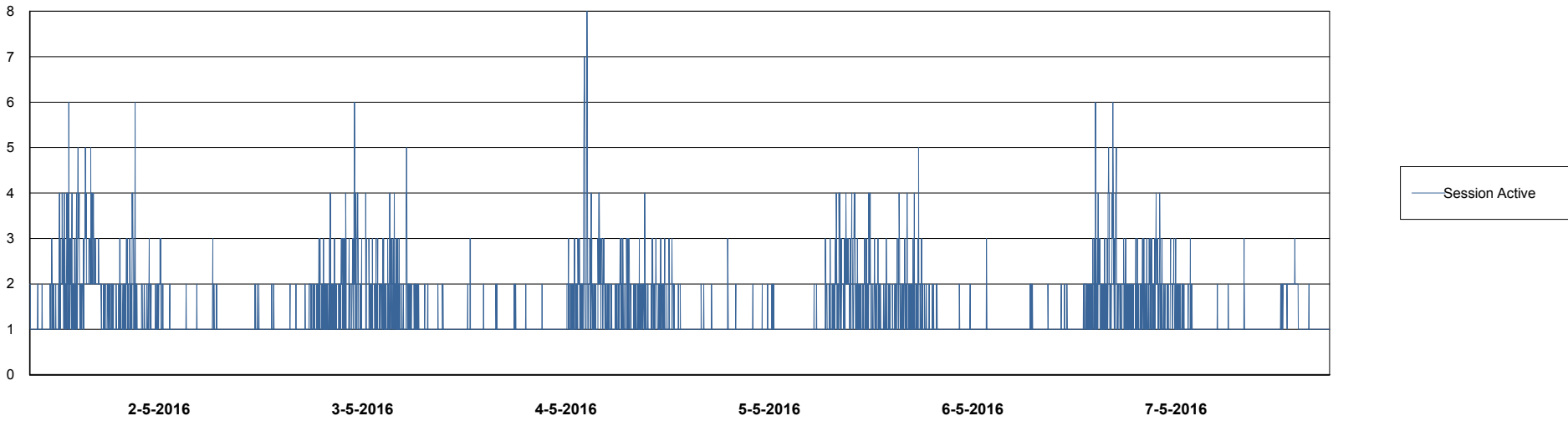
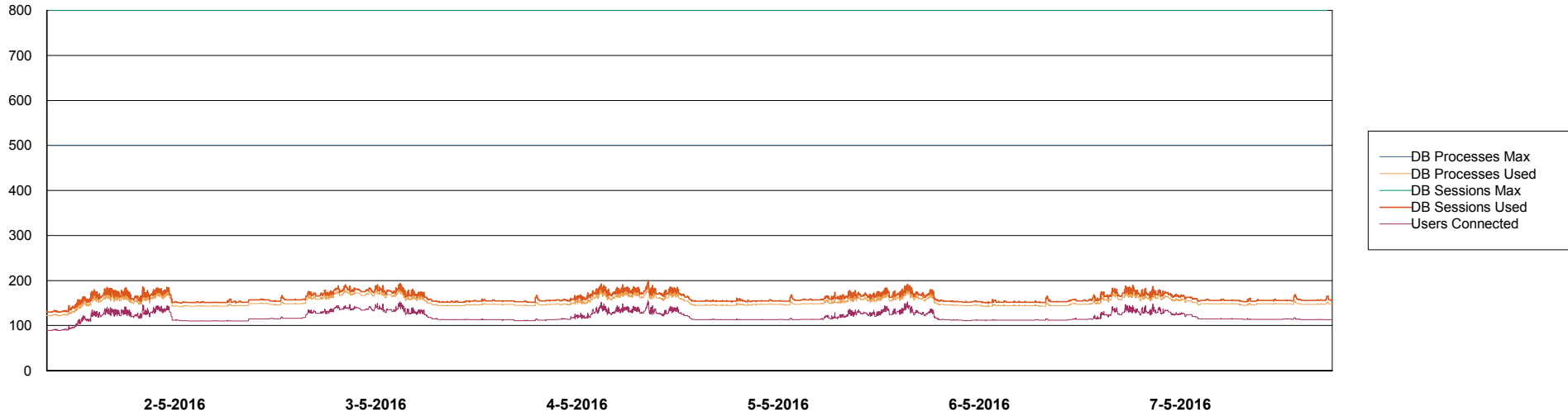
	Total disk space on C (GB)	Free disk space on C (GB)	Total disk space on E (GB)	Free disk space on E (GB)	Total disk space on F (GB)	Free disk space on F (GB)	Total disk space on G (GB)	Free disk space on G (GB)
7-5-2016	279	75	558	465	558	457	279	91
6-5-2016	279	75	558	465	558	457	279	92
5-5-2016	279	75	558	465	558	457	279	94
4-5-2016	279	75	558	465	558	457	279	96
3-5-2016	279	75	558	465	558	457	279	98
2-5-2016	279	75	558	465	558	457	279	100
1-5-2016	279	89	558	465	558	457	279	101

Weekly SLA Customer Report

Customer NIX_Production
Database ID 51



DATABASE PERFORMANCE NIXDB_Production

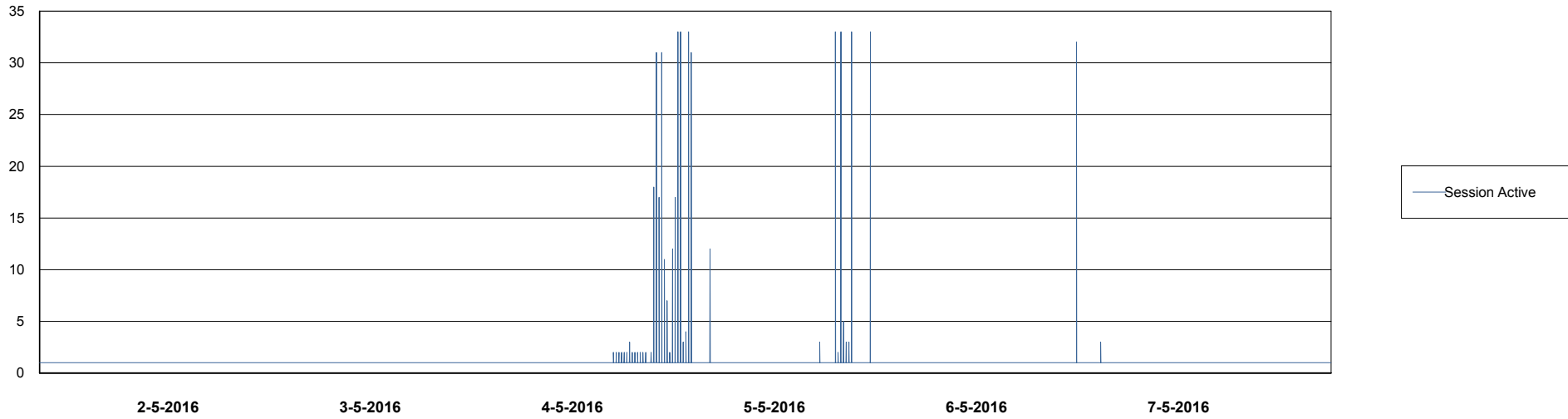
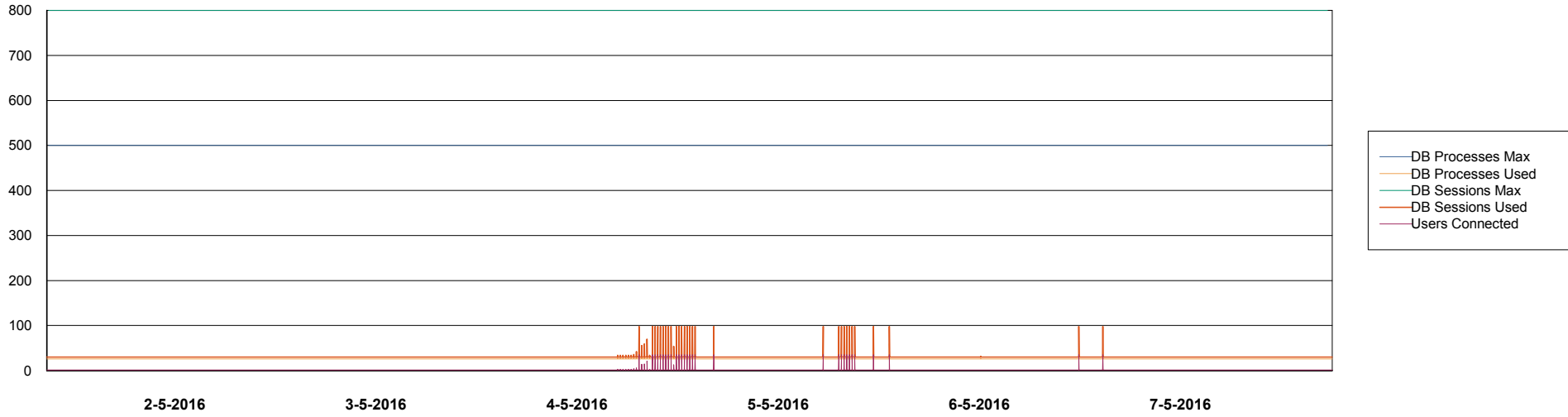


Weekly SLA Customer Report

Customer NIX_Production
Database ID 51



DATABASE PERFORMANCE NIXDB_Standby



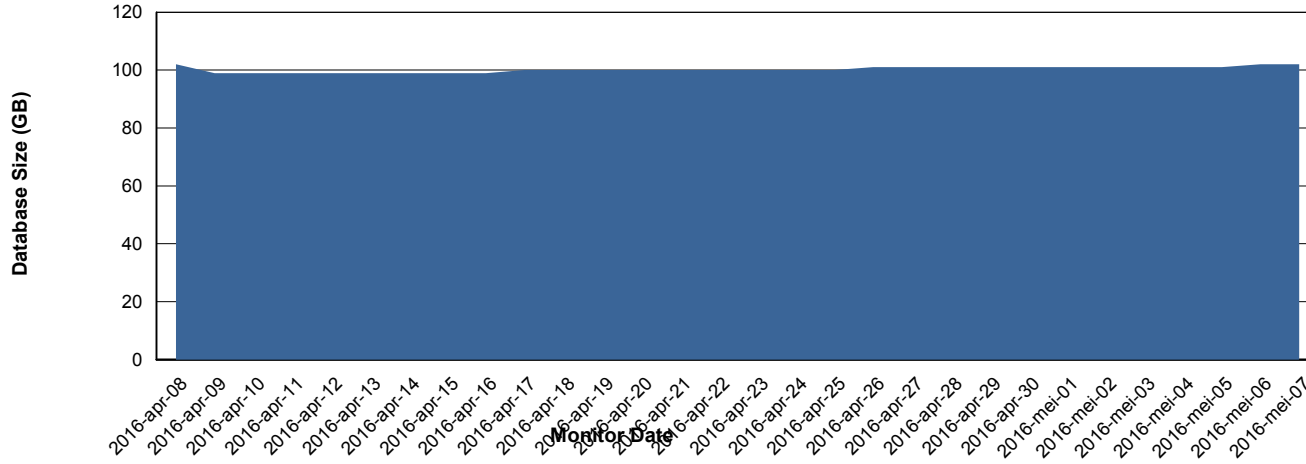
Weekly SLA Customer Report

Customer NIX_Production
 Database ID 51



=====
 DATABASE SIZE NIXDB_Production
 =====

Database growth over last month



=====
 DATABASE TABLESPACES NIXDB_Production
 =====

TOTAL DATABASE SIZE PER TABLESPACE

Date	Tablespace Name	Filesize (Gb)	Usedsize (Gb)	Percentage free
7-5-2016	ABSDATA	50	39	22
	INDX	100	61	39
6-5-2016	ABSDATA	50	39	22
	INDX	100	61	39
5-5-2016	ABSDATA	50	39	22
	INDX	100	61	39
4-5-2016	ABSDATA	50	39	22
	INDX	100	61	39
3-5-2016	ABSDATA	50	39	22
	INDX	100	61	39
2-5-2016	ABSDATA	50	39	22
	INDX	100	61	39
1-5-2016	ABSDATA	50	39	22
	INDX	100	60	40

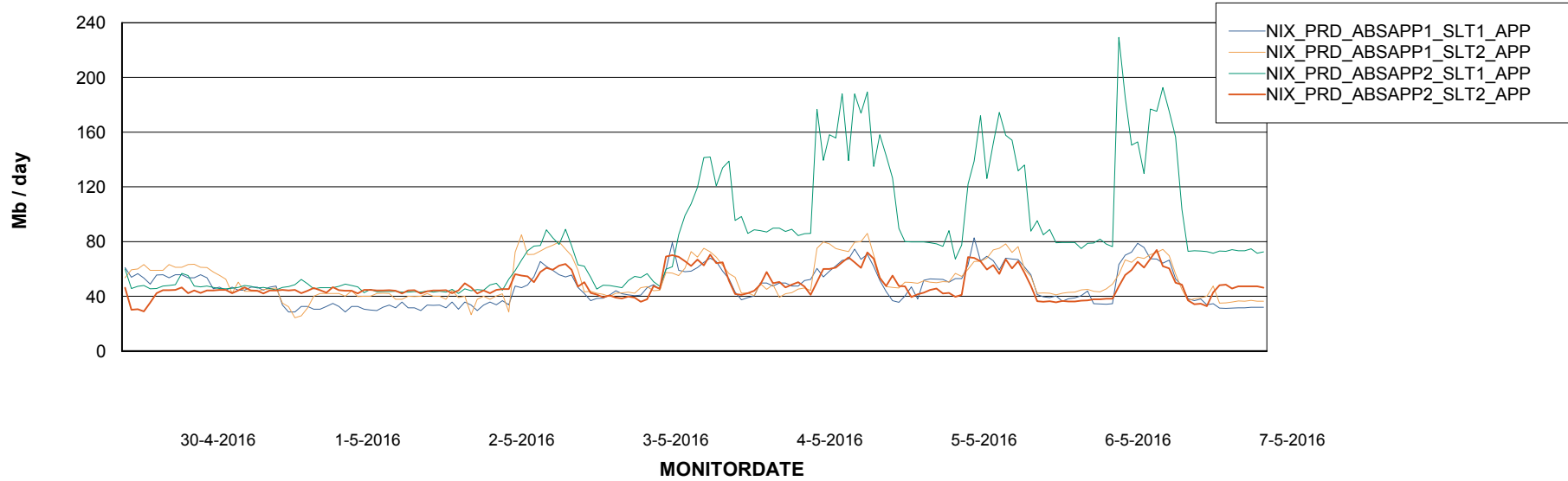
Weekly SLA Customer Report

Customer NIX_Production
Database ID 51



=====
ABSolute Application Server Services
=====

Avg memory used per ABS Server Service



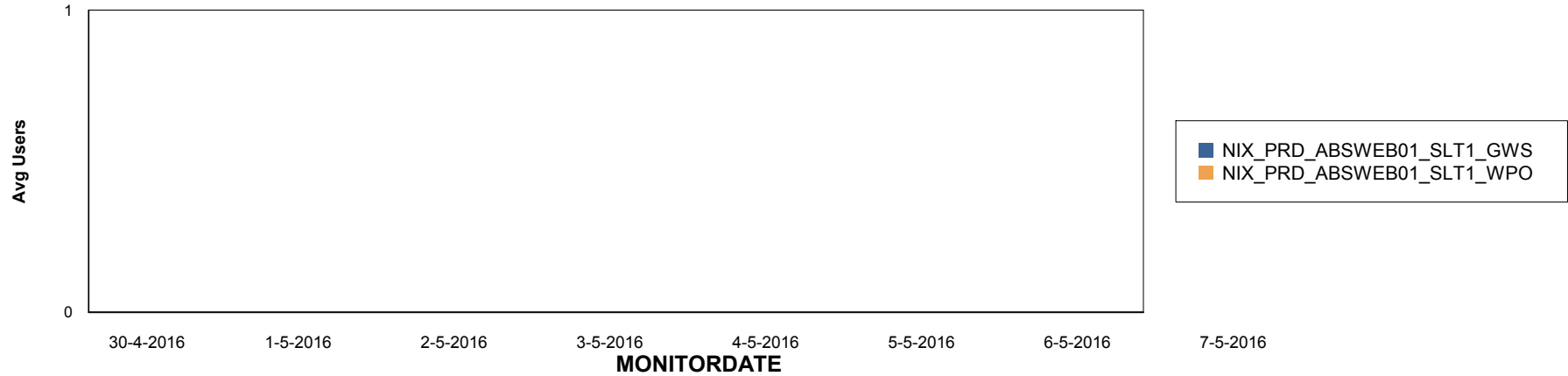
Weekly SLA Customer Report

Customer NIX_Production
Database ID 51

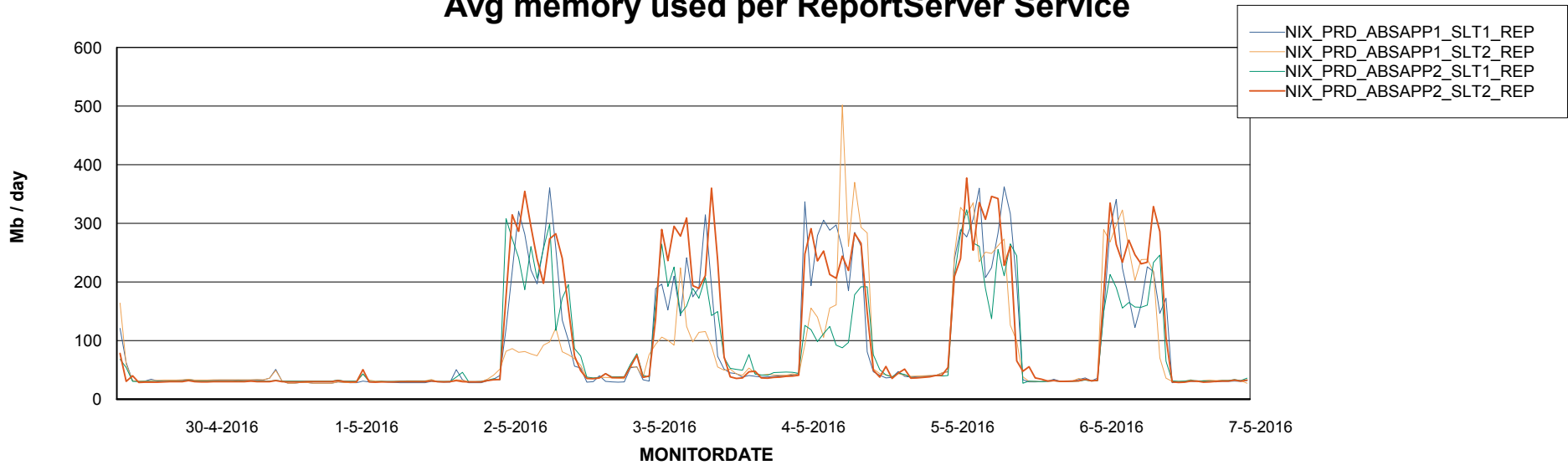


=====
ABSolute Application ReportServer Services
=====

Disaster per ReportServer



Avg memory used per ReportServer Service



Weekly SLA Customer Report

Customer NIX_Production
Database ID 51



Disaster per ABS component

