

Weekly SLA Customer Report

Customer CIW Production
 Database ID 45



=====
 HARDDISK USAGE CIW_PRD_ORACLE1
 =====

	Total disk space on C (GB)	Free disk space on C (GB)	Total disk space on D (GB)	Free disk space on D (GB)	Total disk space on E (GB)	Free disk space on E (GB)
7-5-2016	276	125	279	185	279	176
6-5-2016	276	125	279	185	279	177
5-5-2016	276	125	279	185	279	177
4-5-2016	276	125	279	185	279	177
3-5-2016	276	125	279	185	279	178
2-5-2016	276	125	279	185	279	178
1-5-2016	276	125	279	185	279	179

=====
 HARDDISK USAGE CIW_PRD_ORACLE2
 =====

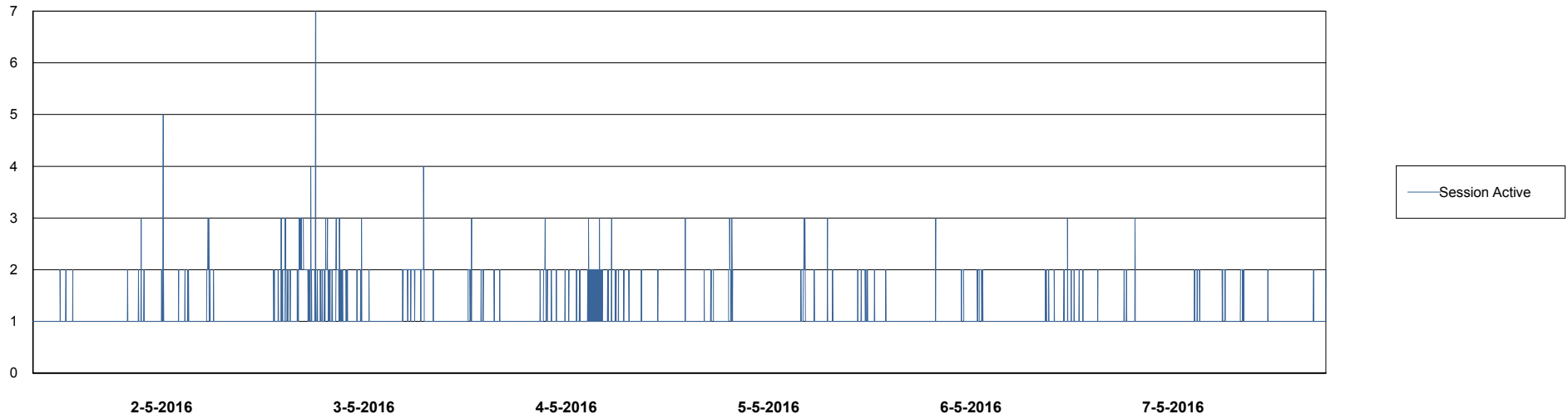
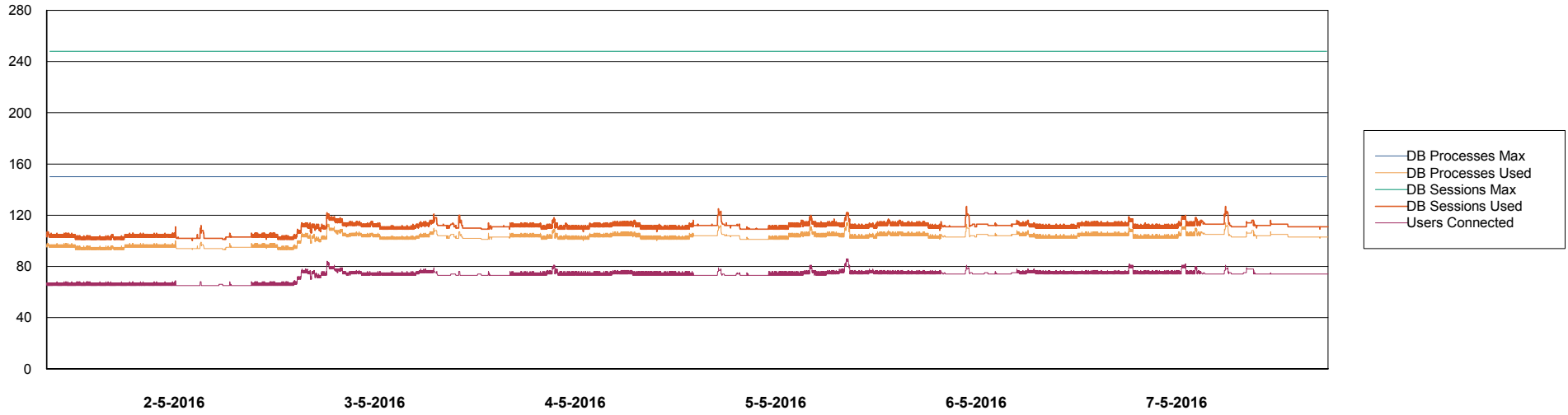
	Total disk space on C (GB)	Free disk space on C (GB)	Total disk space on D (GB)	Free disk space on D (GB)	Total disk space on E (GB)	Free disk space on E (GB)
7-5-2016	555	346	558	547	558	408
6-5-2016	555	346	558	547	558	408
5-5-2016	555	346	558	547	558	409
4-5-2016	555	346	558	547	558	409
3-5-2016	555	346	558	547	558	410
2-5-2016	555	346	558	547	558	410
1-5-2016	555	347	558	547	558	411

Weekly SLA Customer Report

Customer CIW Production
Database ID 45



DATABASE PERFORMANCE CIWDB_Production

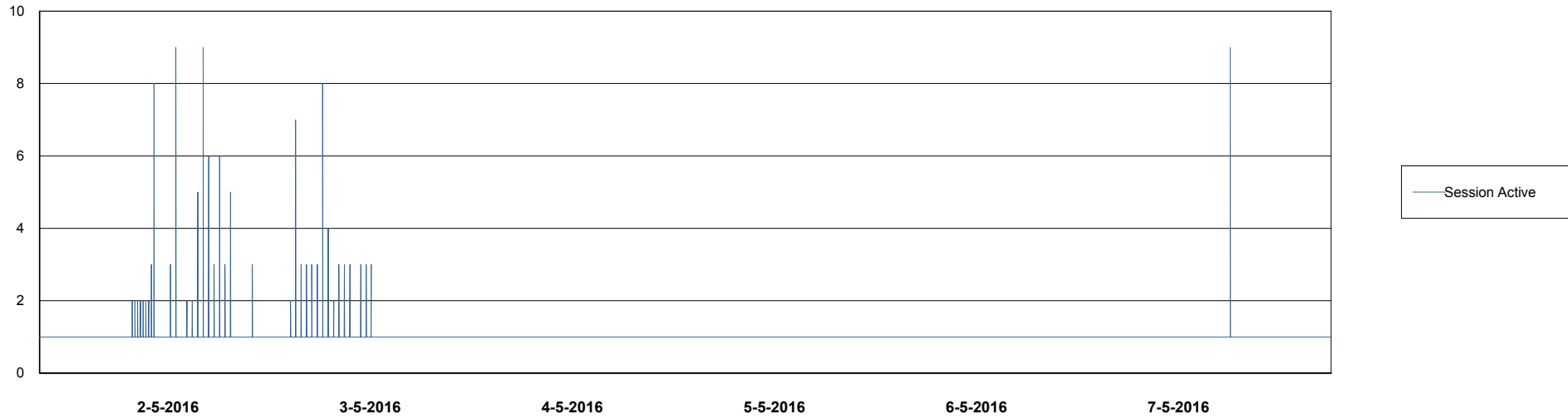
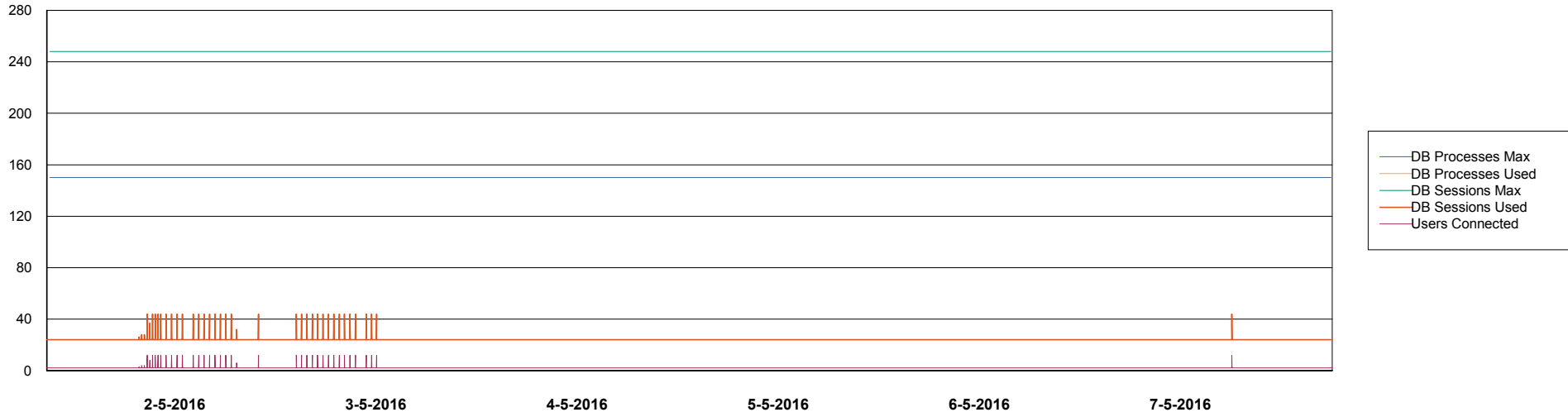


Weekly SLA Customer Report

Customer CIW Production
Database ID 45



DATABASE PERFORMANCE CIWDB_Standby



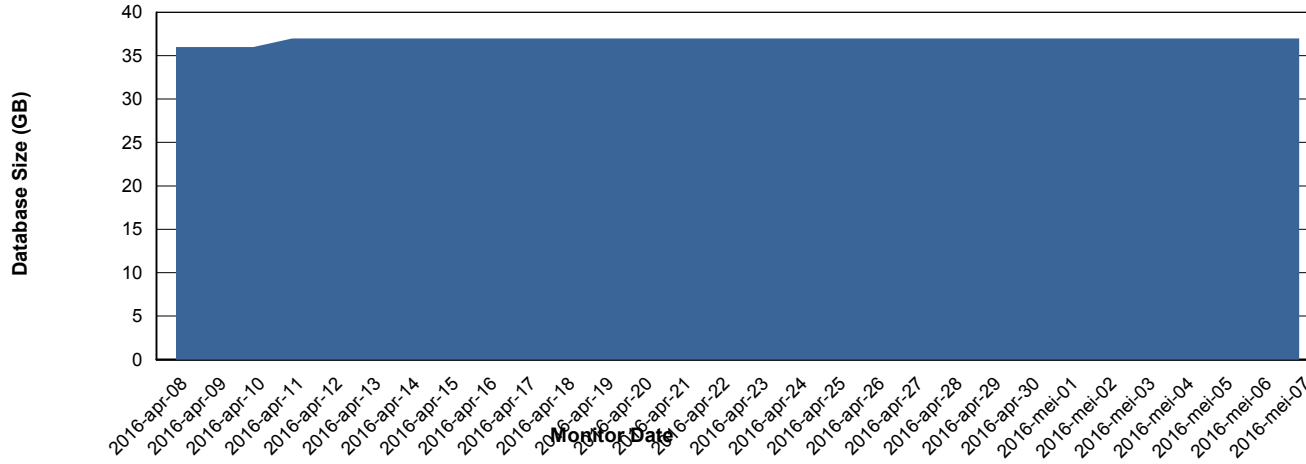
Weekly SLA Customer Report

Customer CIW Production
 Database ID 45



=====
 DATABASE SIZE CIWDB_Production
 =====

Database growth over last month



=====
 DATABASE TABLESPACES CIWDB_Production
 =====

TOTAL DATABASE SIZE PER TABLESPACE

Date	Tablespace Name	Filesize (Gb)	Usedsize (Gb)	Percentage free
7-5-2016	ABSDATA	39	33	15
	INDX	4	3	25
6-5-2016	ABSDATA	39	33	15
	INDX	4	3	25
5-5-2016	ABSDATA	39	33	15
	INDX	4	3	25
4-5-2016	ABSDATA	39	33	15
	INDX	4	3	25
3-5-2016	ABSDATA	39	33	15
	INDX	4	3	25
2-5-2016	ABSDATA	39	33	15
	INDX	4	3	25
1-5-2016	ABSDATA	39	33	15
	INDX	4	3	25

Weekly SLA Customer Report

Customer CIW Production
Database ID 45



=====
STANDBY DATABASE HEALTH CIW Production
=====

Recovery lag for last 7 days

