

Weekly SLA Customer Report

Customer NIX_Production
 Database ID 51



=====
 HARDDISK USAGE NIX_PRD_ABSAPP2
 =====

	Total disk space on C (GB)	Free disk space on C (GB)
30-4-2016	200	147
29-4-2016	200	150
28-4-2016	200	154
27-4-2016	200	161
26-4-2016	200	164
25-4-2016	200	164
24-4-2016	200	164

=====
 HARDDISK USAGE NIX_PRD_ABSWEB01
 =====

	Total disk space on C (GB)	Free disk space on C (GB)	Total disk space on F (GB)
30-4-2016	300	278	0
29-4-2016	300	278	300
28-4-2016	300	278	0
27-4-2016	300	278	0
26-4-2016	300	278	0
25-4-2016	300	278	0
24-4-2016	300	278	0

Weekly SLA Customer Report

Customer NIX_Production
 Database ID 51



=====
 HARDDISK USAGE NIX_PRD_ORACLE_B11
 =====

	Total disk space on C (GB)	Free disk space on C (GB)	Total disk space on E (GB)	Free disk space on E (GB)	Total disk space on F (GB)	Free disk space on F (GB)	Total disk space on G (GB)	Free disk space on G (GB)
30-4-2016	279	68	558	237	279	179	558	207
29-4-2016	279	68	558	238	279	179	558	193
28-4-2016	279	68	558	239	279	178	558	199
27-4-2016	279	68	558	240	279	168	558	206
26-4-2016	279	68	558	242	279	179	558	212
25-4-2016	279	68	558	242	279	179	558	218
24-4-2016	279	68	558	244	279	179	558	223

=====
 HARDDISK USAGE NIX_PRD_ORCDB1
 =====

	Total disk space on C (GB)	Free disk space on C (GB)	Total disk space on E (GB)	Free disk space on E (GB)	Total disk space on F (GB)	Free disk space on F (GB)	Total disk space on G (GB)	Free disk space on G (GB)
30-4-2016	279	107	558	459	558	451	279	104
29-4-2016	279	107	558	461	558	454	279	105
28-4-2016	279	107	558	464	558	457	279	107
27-4-2016	279	107	558	462	558	455	279	109
26-4-2016	279	107	558	465	558	457	279	111
25-4-2016	279	107	558	465	558	457	279	114
24-4-2016	279	107	558	465	558	457	279	115

Weekly SLA Customer Report

Customer NIX_Production
 Database ID 51



=====
 HARDDISK USAGE NIX_PRD_ORCDB2
 =====

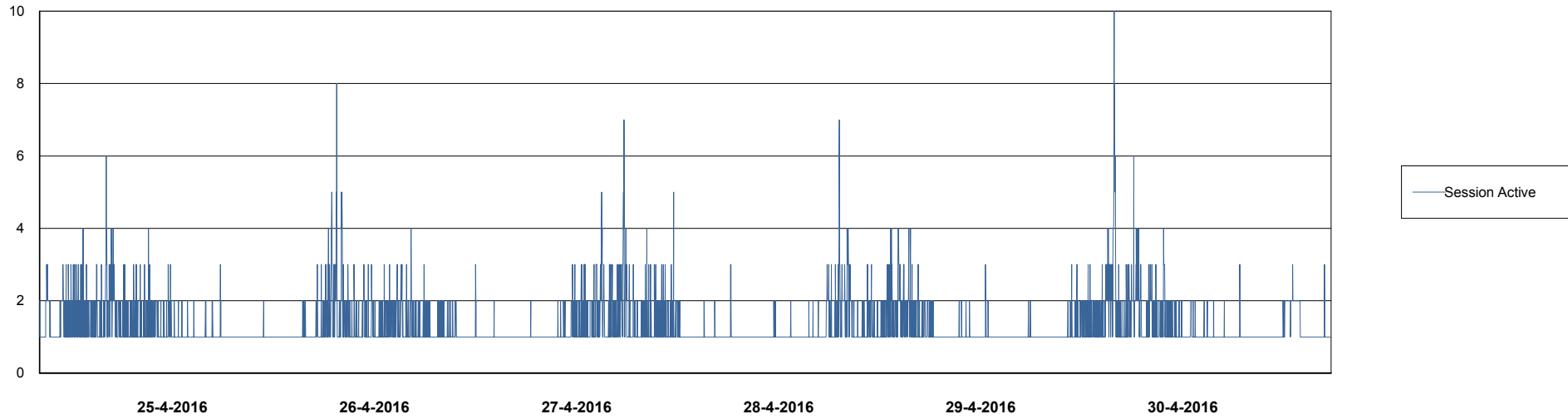
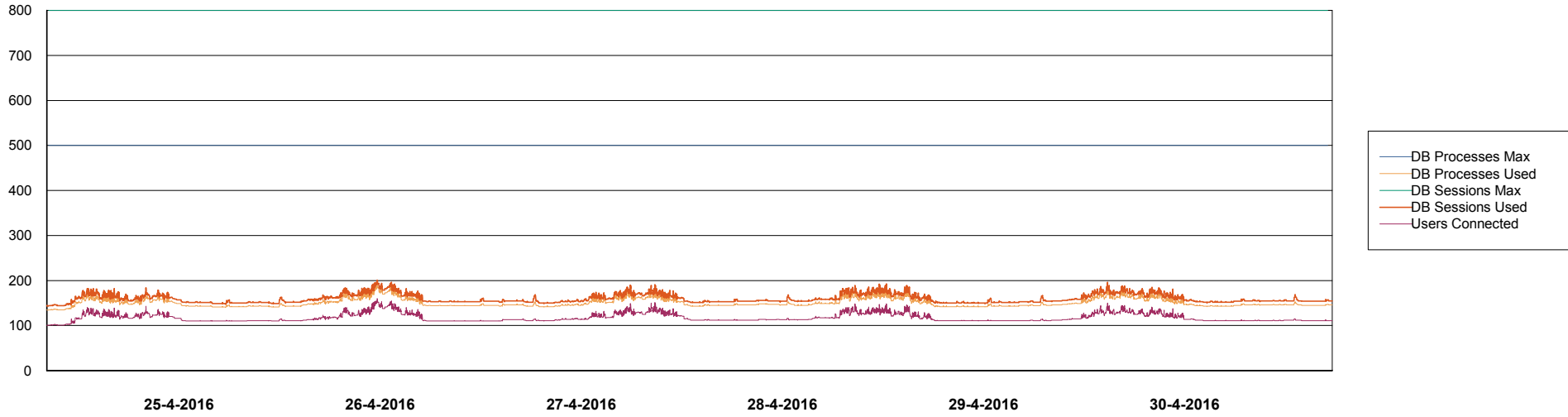
	Total disk space on C (GB)	Free disk space on C (GB)	Total disk space on E (GB)	Free disk space on E (GB)	Total disk space on F (GB)	Free disk space on F (GB)	Total disk space on G (GB)	Free disk space on G (GB)
30-4-2016	279	107	558	459	558	451	279	104
29-4-2016	279	107	558	461	558	454	279	105
28-4-2016	279	107	558	464	558	457	279	107
27-4-2016	279	107	558	462	558	455	279	109
26-4-2016	279	107	558	465	558	457	279	111
25-4-2016	279	107	558	465	558	457	279	114
24-4-2016	279	107	558	465	558	457	279	115

Weekly SLA Customer Report

Customer NIX_Production
Database ID 51



DATABASE PERFORMANCE NIXDB_Production

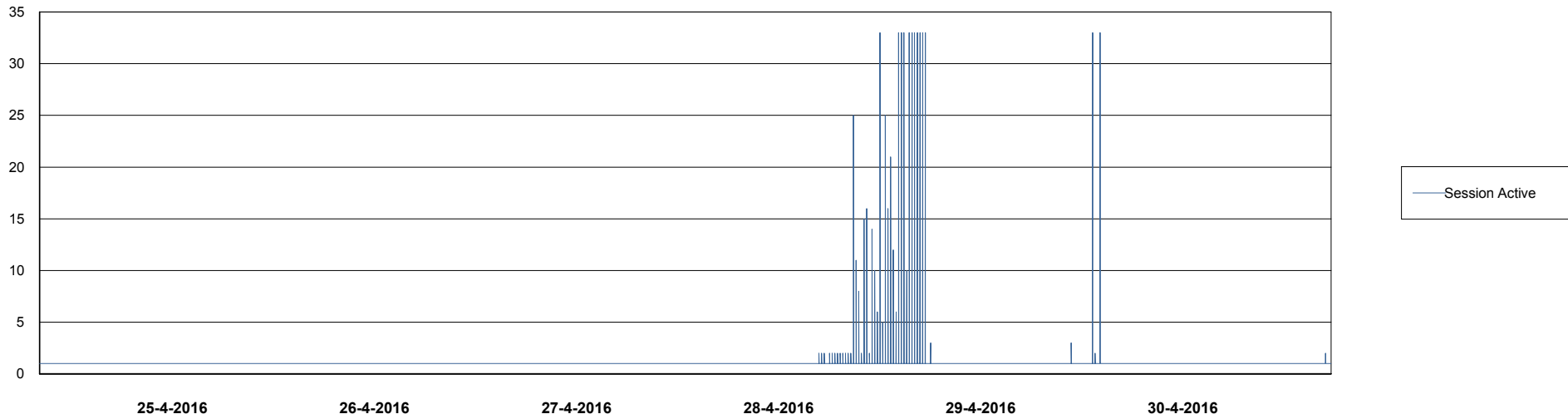
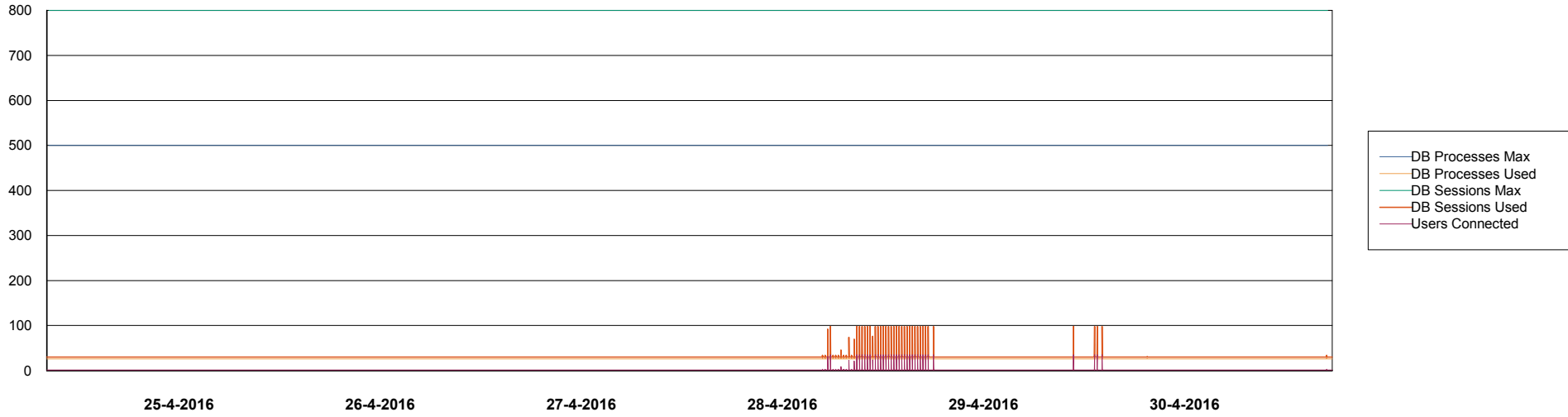


Weekly SLA Customer Report

Customer NIX_Production
Database ID 51



=====
DATABASE PERFORMANCE NIXDB_Standby
=====



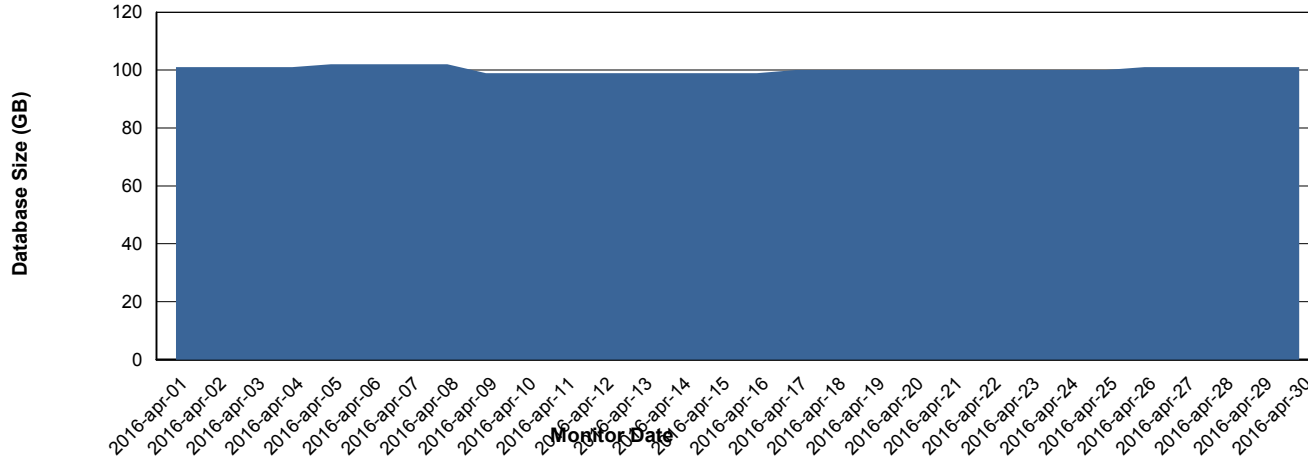
Weekly SLA Customer Report

Customer NIX_Production
 Database ID 51



=====
 DATABASE SIZE NIXDB_Production
 =====

Database growth over last month



=====
 DATABASE TABLESPACES NIXDB_Production
 =====

TOTAL DATABASE SIZE PER TABLESPACE

Date	Tablespace Name	Filesize (Gb)	Usedsize (Gb)	Percentage free
30-4-2016	ABSDATA	50	39	22
	INDX	100	60	40
29-4-2016	ABSDATA	50	39	22
	INDX	100	60	40
28-4-2016	ABSDATA	50	39	22
	INDX	100	60	40
27-4-2016	ABSDATA	50	39	22
	INDX	100	60	40
26-4-2016	ABSDATA	50	39	22
	INDX	100	60	40
25-4-2016	ABSDATA	50	39	22
	INDX	100	60	40
24-4-2016	ABSDATA	50	39	22
	INDX	100	60	40

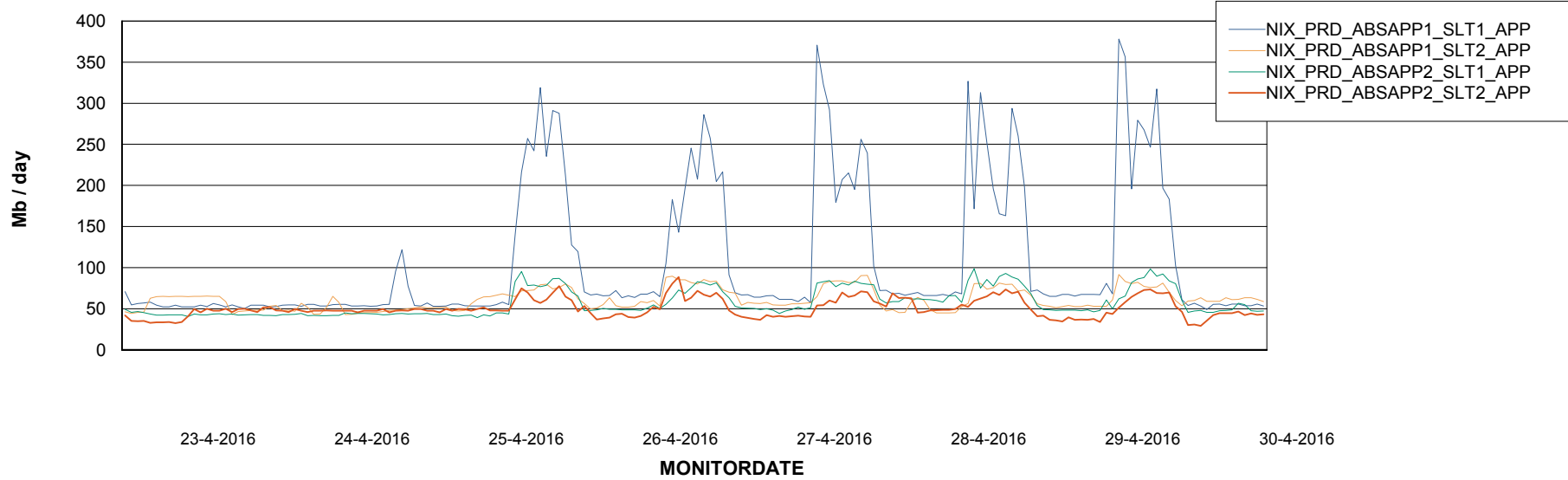
Weekly SLA Customer Report

Customer NIX_Production
Database ID 51



=====
ABSolute Application Server Services
=====

Avg memory used per ABS Server Service



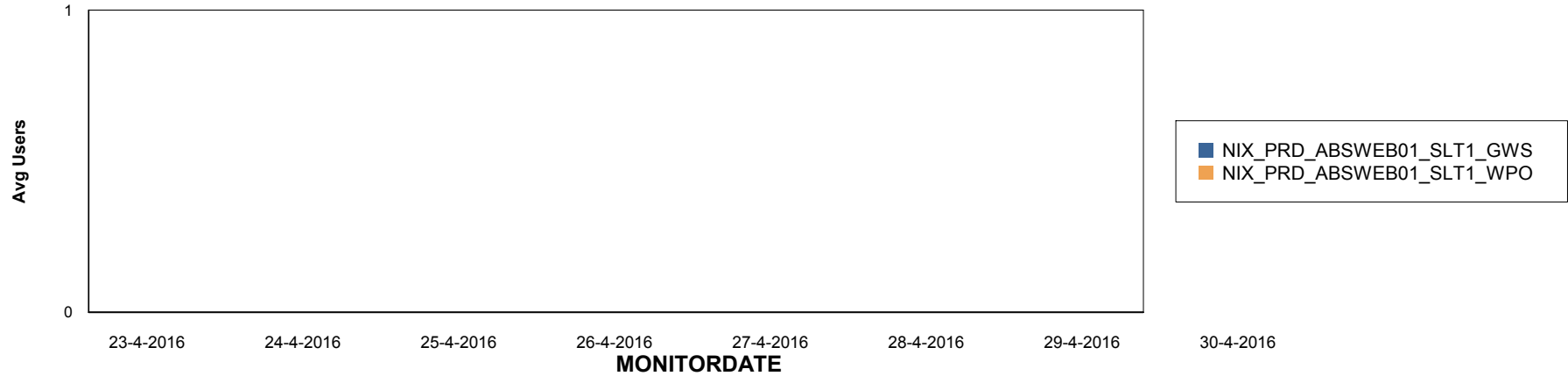
Weekly SLA Customer Report

Customer NIX_Production
Database ID 51

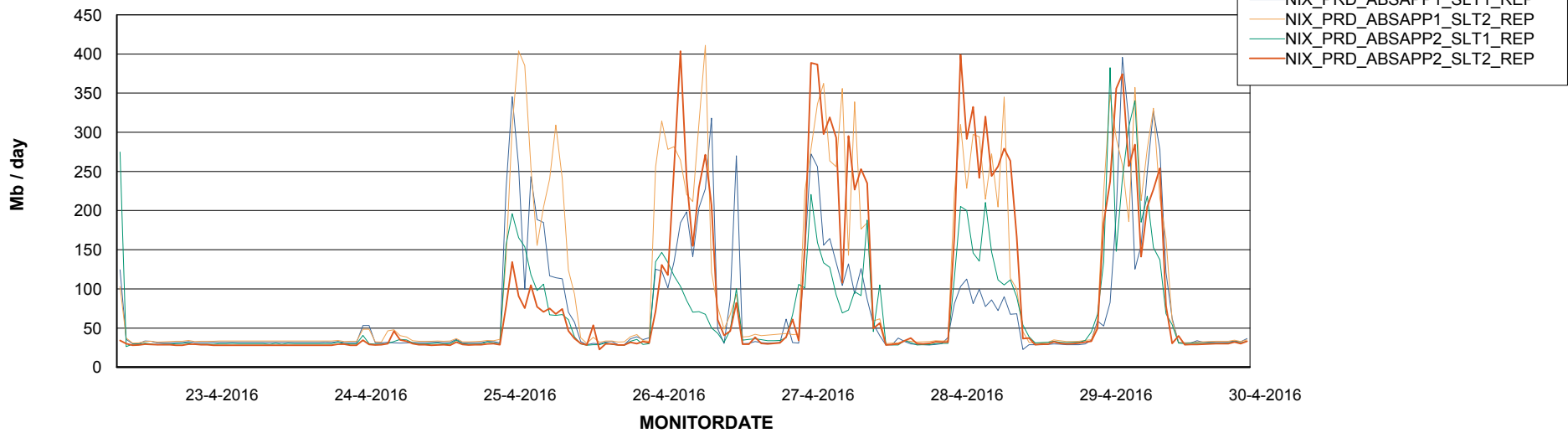


=====
ABSolute Application ReportServer Services
=====

Disaster per ReportServer



Avg memory used per ReportServer Service



Weekly SLA Customer Report

Customer NIX_Production
Database ID 51



Disaster per ABS component

