

## Weekly SLA Customer Report

Customer      BOH\_Production  
 Database ID    55



=====  
 HARDDISK USAGE    BOH\_PRD\_ORACLE2  
 =====

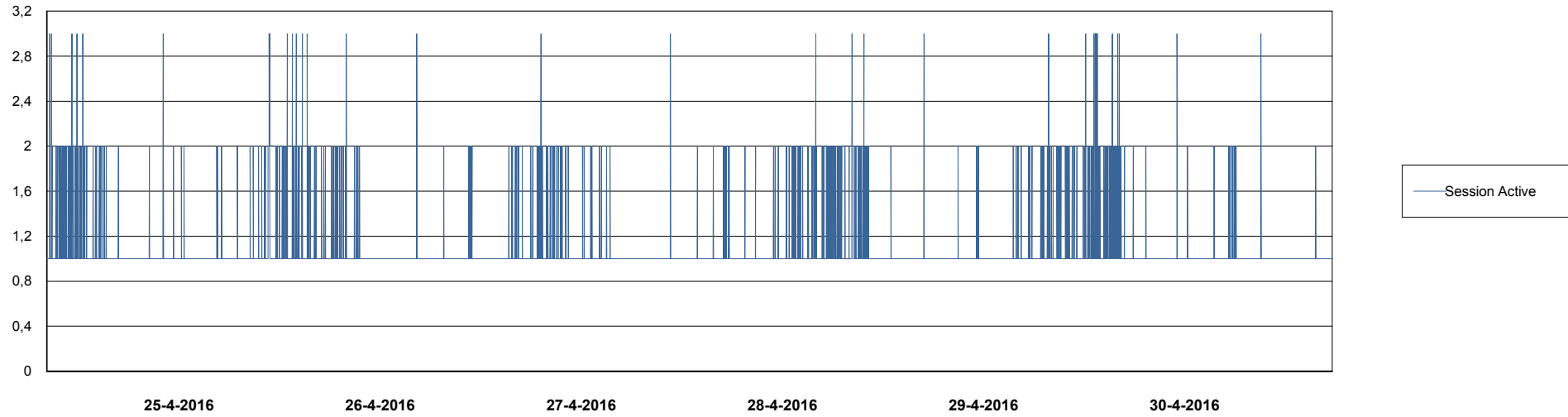
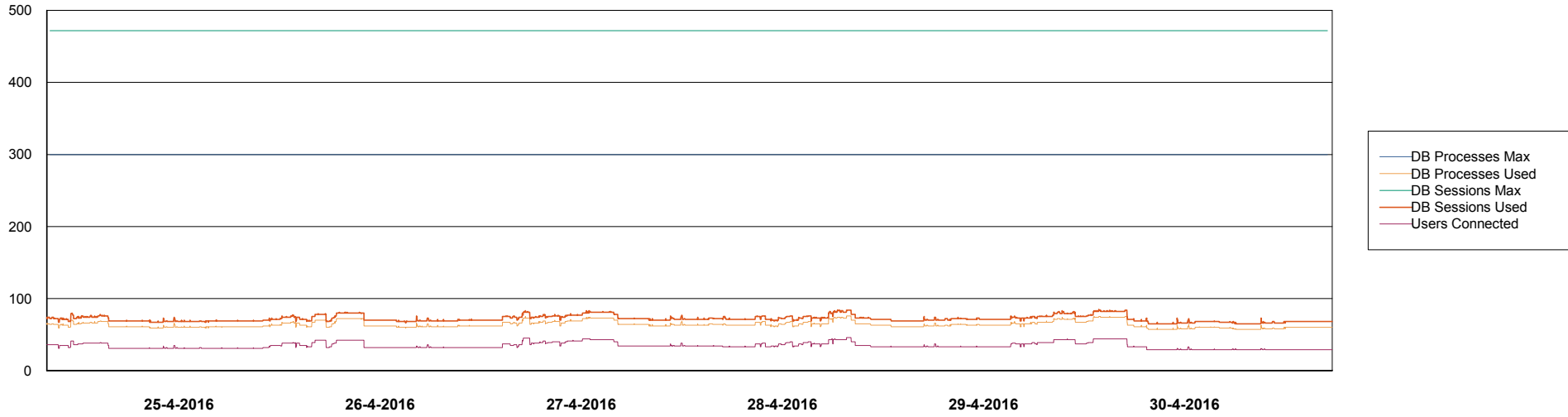
	Total disk space on C (GB)	Free disk space on C (GB)	Total disk space on D (GB)	Free disk space on D (GB)	Total disk space on E (GB)	Free disk space on E (GB)
<b>30-4-2016</b>	557	437	227	179	329	65
<b>29-4-2016</b>	557	437	227	179	329	66
<b>28-4-2016</b>	557	437	227	179	329	67
<b>27-4-2016</b>	557	438	227	179	329	68
<b>26-4-2016</b>	557	438	227	179	329	68
<b>25-4-2016</b>	557	438	227	179	329	69
<b>24-4-2016</b>	557	438	227	179	329	87

# Weekly SLA Customer Report

Customer BOH\_Production  
Database ID 55



DATABASE PERFORMANCE BOHDB\_Production

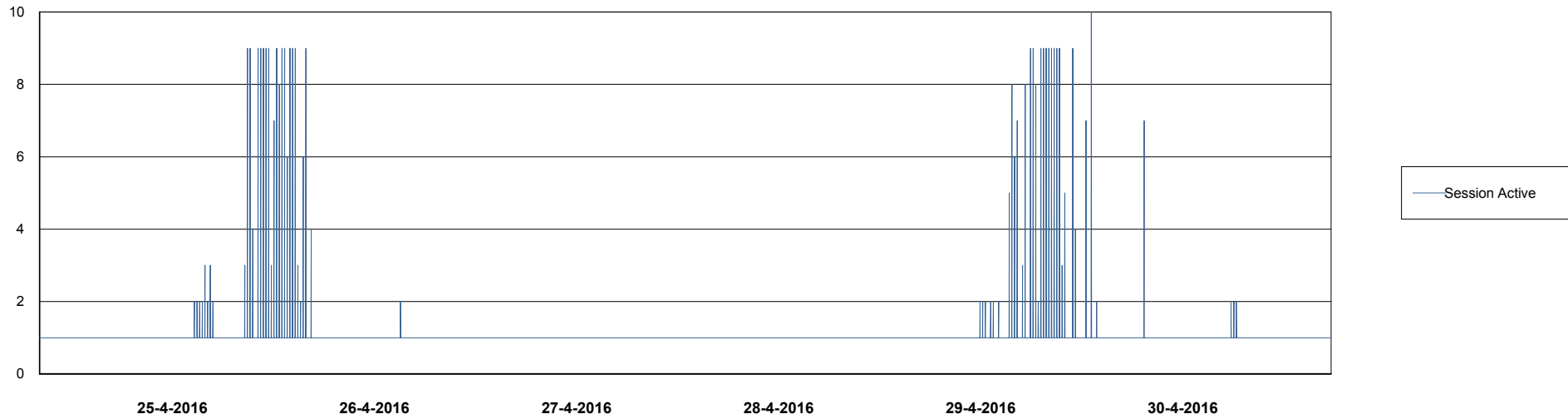
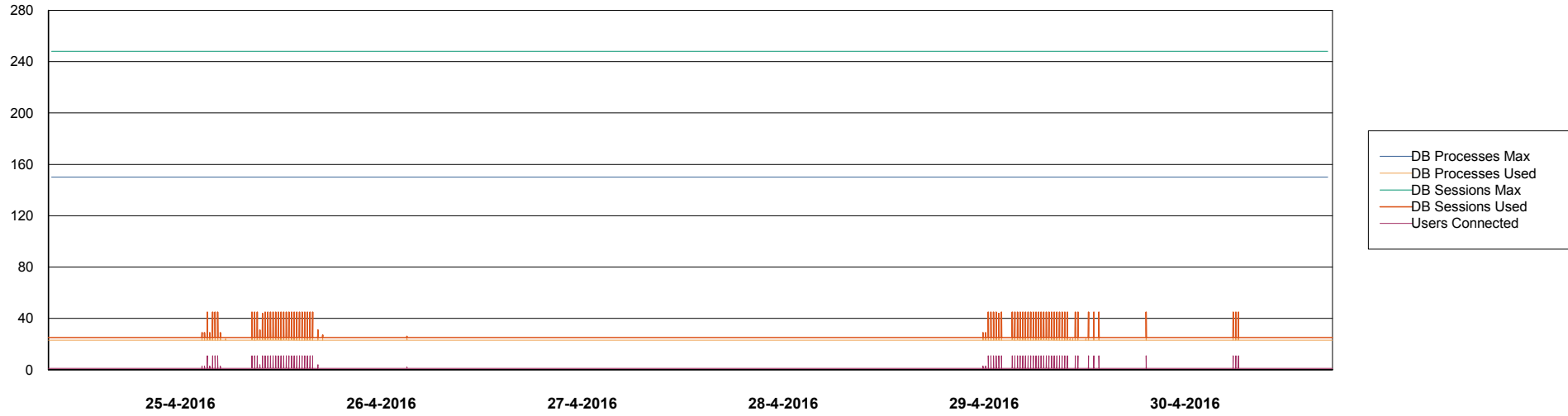


# Weekly SLA Customer Report

Customer BOH\_Production  
Database ID 55



## DATABASE PERFORMANCE BOHDB\_Standby



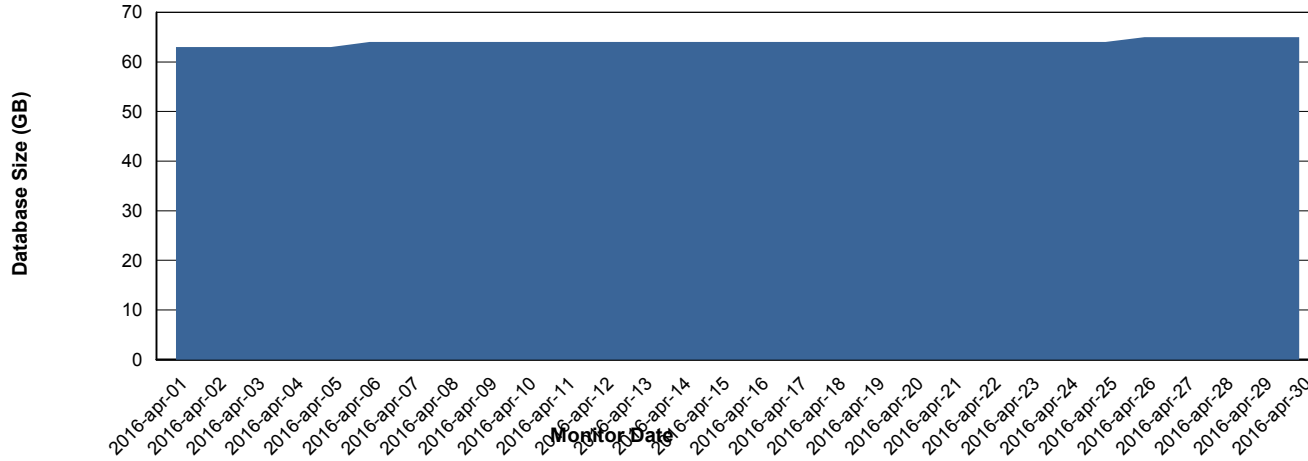
# Weekly SLA Customer Report

Customer BOH\_Production  
 Database ID 55



=====  
 DATABASE SIZE BOHDB\_Production  
 =====

## Database growth over last month



=====  
 DATABASE TABLESPACES BOHDB\_Production  
 =====

### TOTAL DATABASE SIZE PER TABLESPACE

Date	Tablespace Name	Filesize (Gb)	Usedsize (Gb)	Percentage free
30-4-2016	ABSDATA	42	35	17
	INDX	48	28	42
29-4-2016	ABSDATA	42	35	17
	INDX	48	28	42
28-4-2016	ABSDATA	42	35	17
	INDX	48	28	42
27-4-2016	ABSDATA	42	35	17
	INDX	48	28	42
26-4-2016	ABSDATA	42	35	17
	INDX	48	28	42
25-4-2016	ABSDATA	42	35	17
	INDX	48	28	42
24-4-2016	ABSDATA	42	35	17
	INDX	48	28	42

# Weekly SLA Customer Report

Customer BOH\_Production  
Database ID 55



=====  
STANDBY DATABASE HEALTH BOH\_Production  
=====

### Recovery lag for last 7 days

