

Weekly SLA Customer Report

Customer NIX_Production
Database ID 51



=====
HARDDISK USAGE NIX_PRD_ABSAPP2
=====

	Total disk space on C (GB)	Free disk space on C (GB)
16-4-2016	200	164
15-4-2016	200	164
14-4-2016	200	164
13-4-2016	200	164
12-4-2016	200	164
11-4-2016	200	164
10-4-2016	200	164

=====
HARDDISK USAGE NIX_PRD_ABSWEB01
=====

	Total disk space on C (GB)	Free disk space on C (GB)
16-4-2016	300	279
15-4-2016	300	279
14-4-2016	300	278
13-4-2016	300	279
12-4-2016	300	279
11-4-2016	300	279
10-4-2016	300	279

Weekly SLA Customer Report

Customer NIX_Production
 Database ID 51



=====
 HARDDISK USAGE NIX_PRD_ORACLE_B11
 =====

	Total disk space on C (GB)	Free disk space on C (GB)	Total disk space on E (GB)	Free disk space on E (GB)	Total disk space on F (GB)	Free disk space on F (GB)	Total disk space on G (GB)	Free disk space on G (GB)
16-4-2016	279	68	558	256	279	179	558	236
15-4-2016	279	68	558	259	279	179	558	221
14-4-2016	279	68	558	268	279	179	558	228
13-4-2016	279	68	558	265	279	179	558	234
12-4-2016	279	69	558	268	279	179	558	241
11-4-2016	279	69	558	269	279	179	558	247
10-4-2016	279	69	558	271	279	179	558	253

=====
 HARDDISK USAGE NIX_PRD_ORCDB1
 =====

	Total disk space on C (GB)	Free disk space on C (GB)	Total disk space on E (GB)	Free disk space on E (GB)	Total disk space on F (GB)	Free disk space on F (GB)	Total disk space on G (GB)	Free disk space on G (GB)
16-4-2016	279	108	558	465	558	457	279	130
15-4-2016	279	108	558	465	558	457	279	131
14-4-2016	279	108	558	465	558	457	279	133
13-4-2016	279	108	558	465	558	457	279	135
12-4-2016	279	107	558	465	558	457	279	137
11-4-2016	279	96	558	465	558	457	279	139
10-4-2016	279	93	558	465	558	457	279	140

Weekly SLA Customer Report

Customer NIX_Production
 Database ID 51



=====
 HARDDISK USAGE NIX_PRD_ORCDB2
 =====

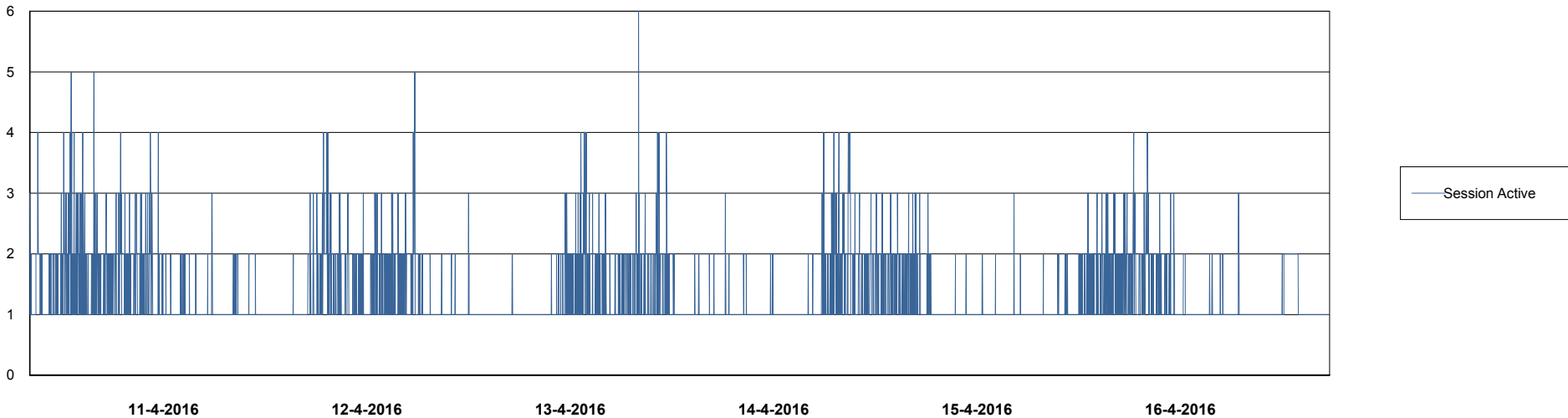
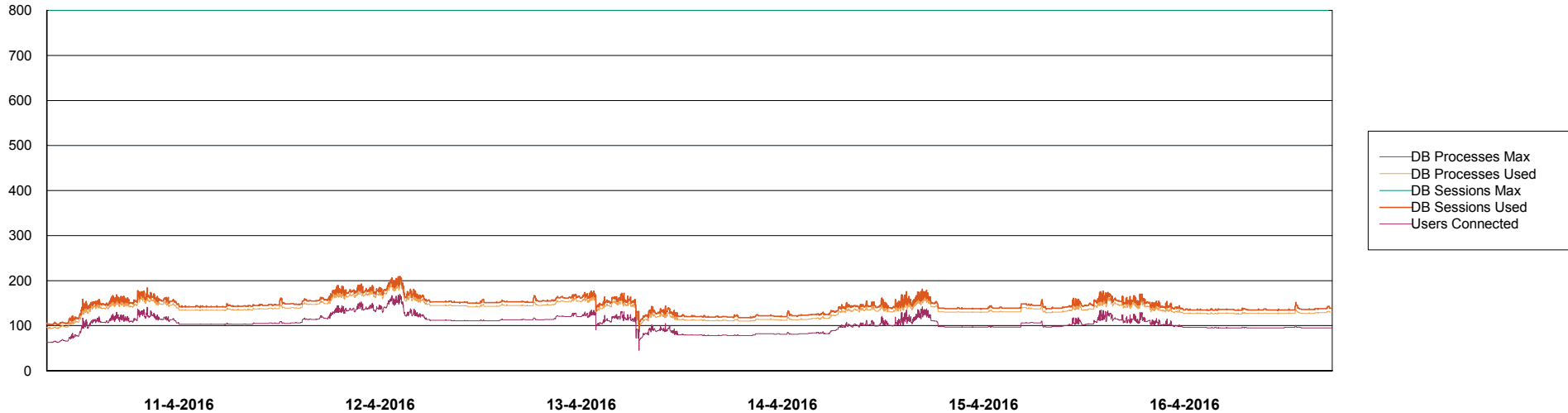
	Total disk space on C (GB)	Free disk space on C (GB)	Total disk space on E (GB)	Free disk space on E (GB)	Total disk space on F (GB)	Free disk space on F (GB)	Total disk space on G (GB)	Free disk space on G (GB)
16-4-2016	279	108	558	465	558	457	279	130
15-4-2016	279	108	558	465	558	457	279	131
14-4-2016	279	108	558	465	558	457	279	133
13-4-2016	279	108	558	465	558	457	279	135
12-4-2016	279	107	558	465	558	457	279	137
11-4-2016	279	96	558	465	558	457	279	139
10-4-2016	279	93	558	465	558	457	279	140

Weekly SLA Customer Report

Customer NIX_Production
Database ID 51



DATABASE PERFORMANCE NIXDB_Production

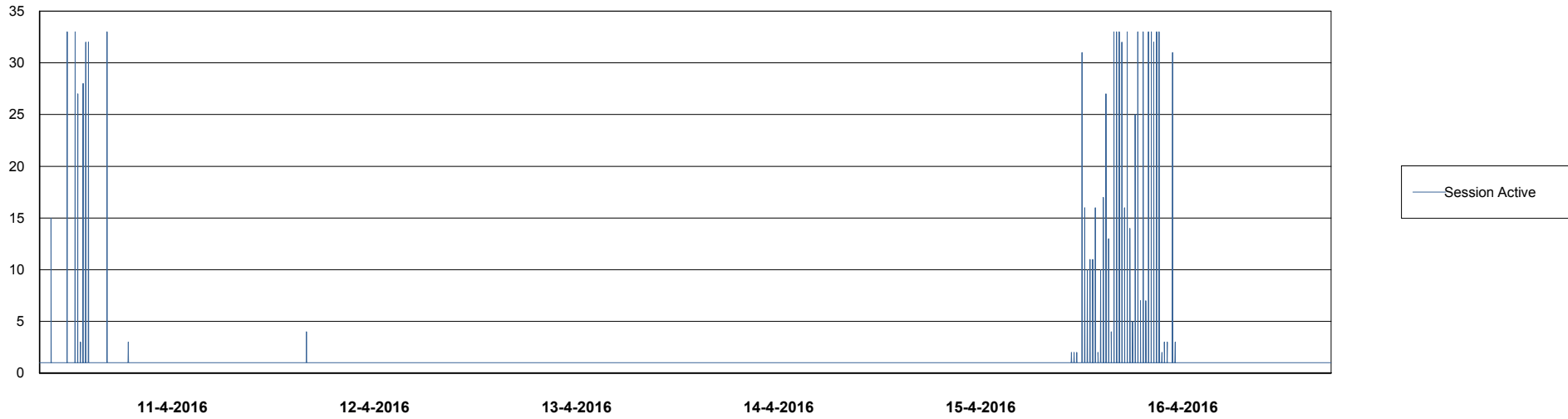
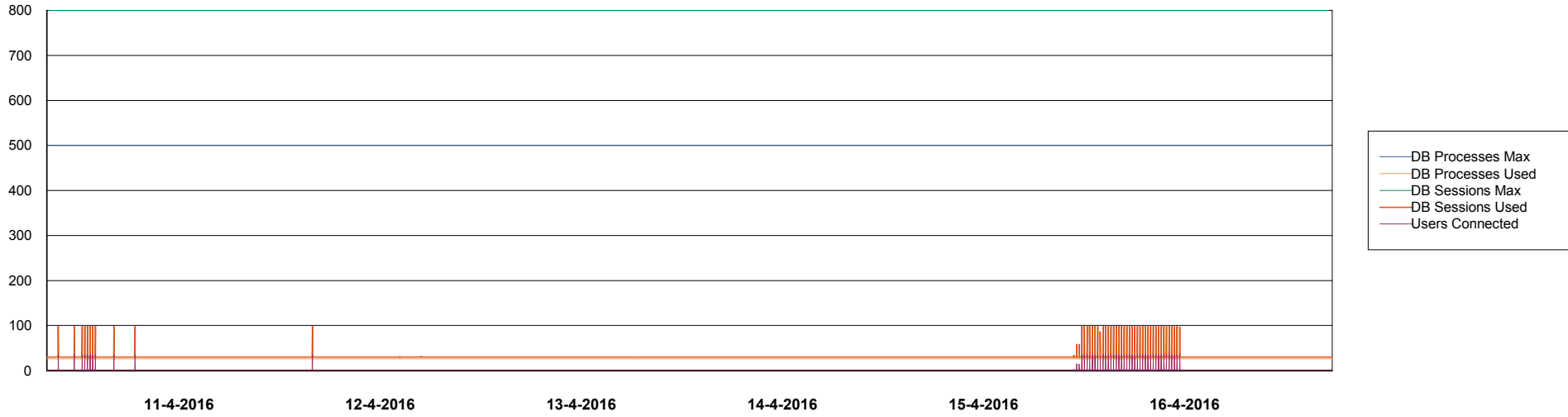


Weekly SLA Customer Report

Customer NIX_Production
Database ID 51



DATABASE PERFORMANCE NIXDB_Standby



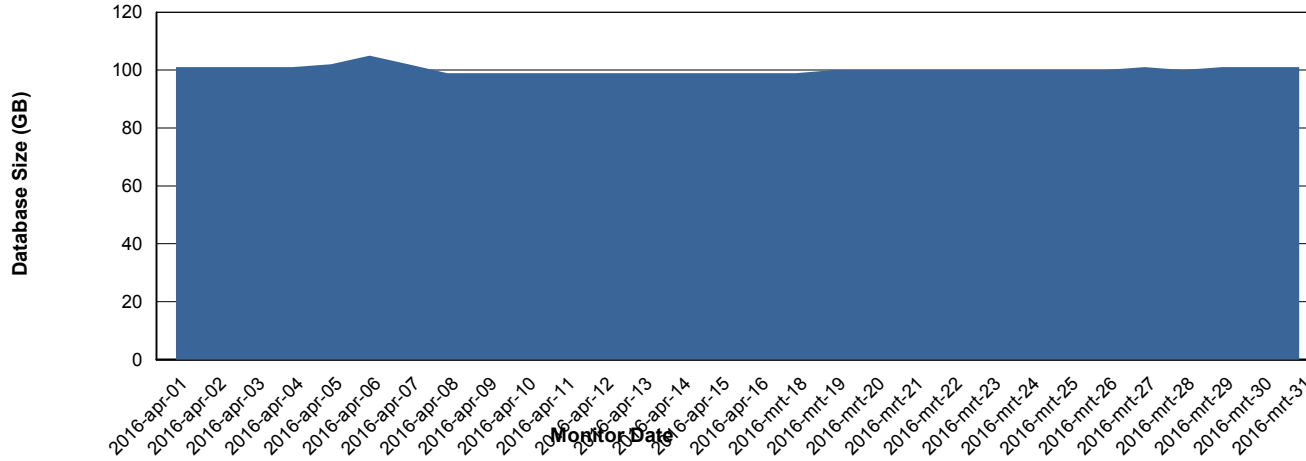
Weekly SLA Customer Report

Customer NIX_Production
 Database ID 51



=====
 DATABASE SIZE NIXDB_Production
 =====

Database growth over last month



=====
 DATABASE TABLESPACES NIXDB_Production
 =====

TOTAL DATABASE SIZE PER TABLESPACE

Date	Tablespace Name	Filesize (Gb)	Usedsize (Gb)	Percentage free
16-4-2016	ABSDATA	50	39	22
	INDX	100	59	41
15-4-2016	ABSDATA	50	39	22
	INDX	100	59	41
14-4-2016	ABSDATA	50	39	22
	INDX	100	59	41
13-4-2016	ABSDATA	50	39	22
	INDX	100	59	41
12-4-2016	ABSDATA	50	39	22
	INDX	100	59	41
11-4-2016	ABSDATA	50	39	22
	INDX	100	59	41
10-4-2016	ABSDATA	50	39	22
	INDX	100	59	41

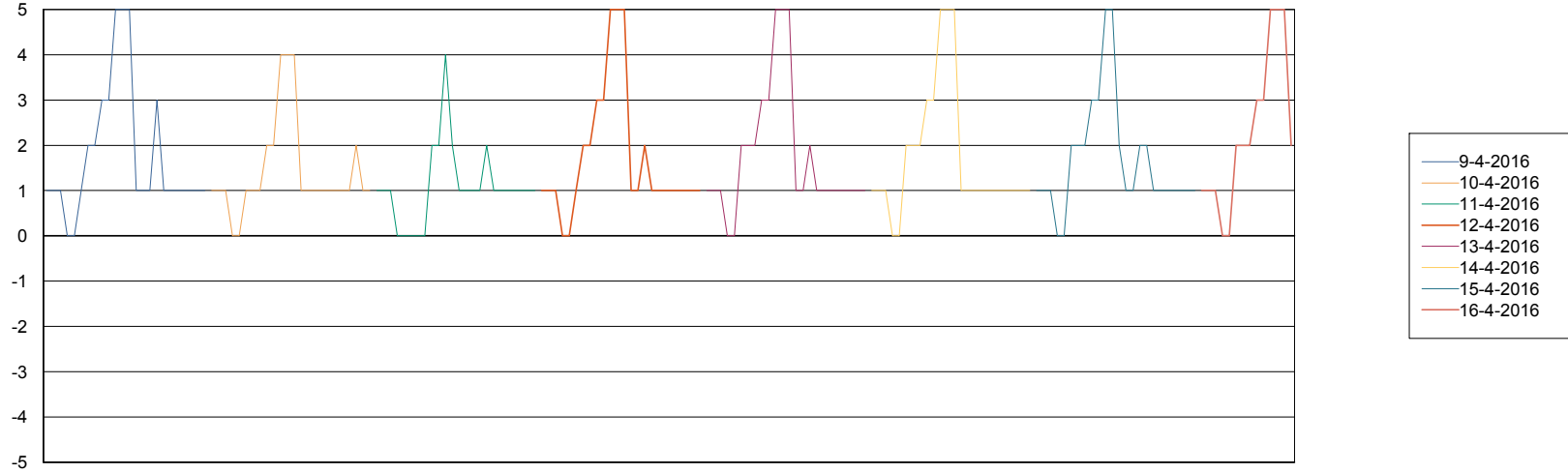
Weekly SLA Customer Report

Customer NIX_Production
Database ID 51



=====
STANDBY DATABASE HEALTH NIX_Production
=====

Recovery lag for last 7 days



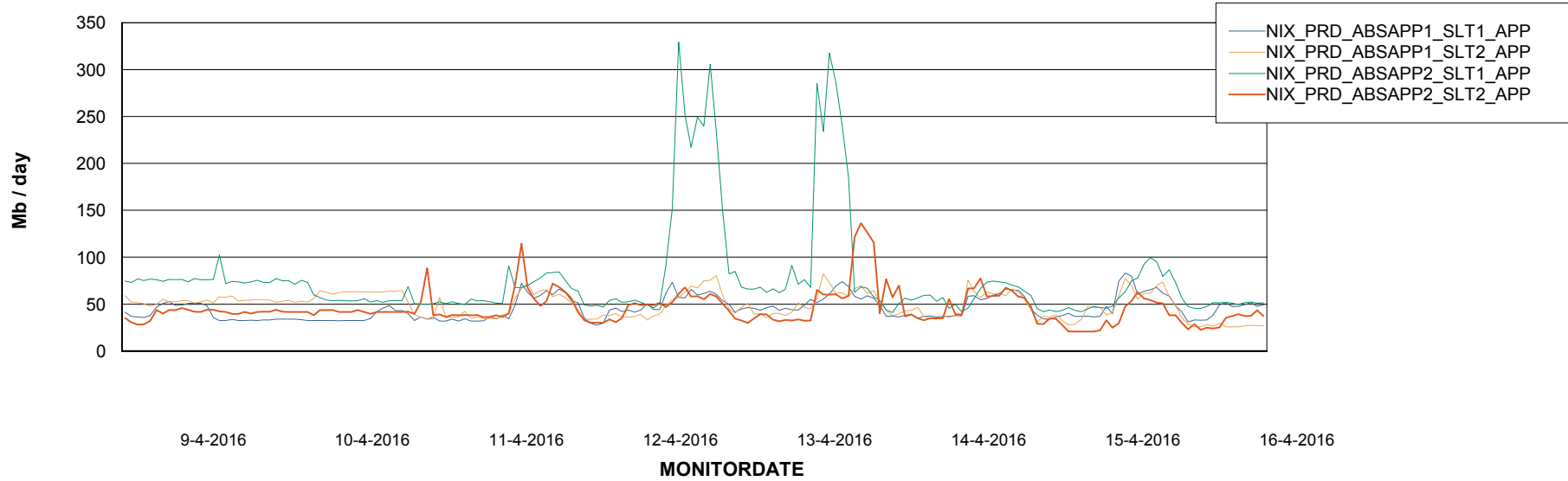
Weekly SLA Customer Report

Customer NIX_Production
Database ID 51



=====
ABSolute Application Server Services
=====

Avg memory used per ABS Server Service



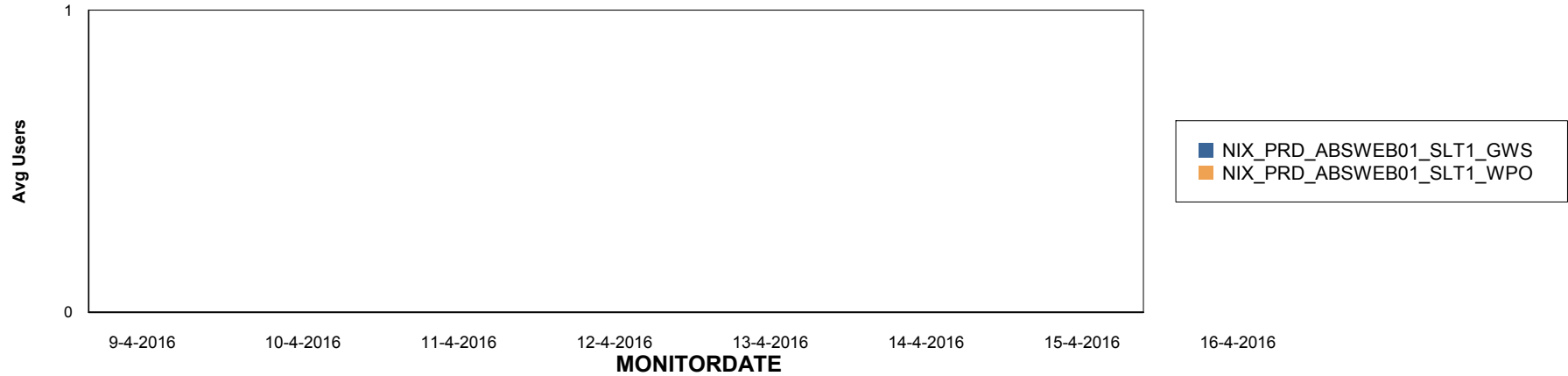
Weekly SLA Customer Report

Customer NIX_Production
Database ID 51

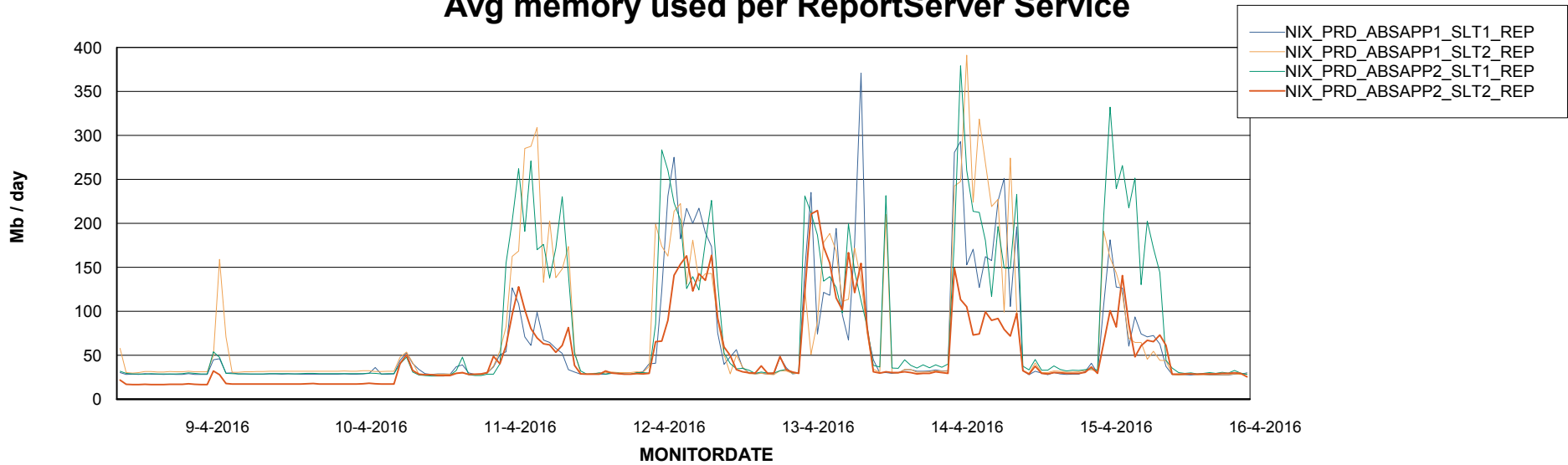


=====
ABSolute Application ReportServer Services
=====

Disaster per ReportServer



Avg memory used per ReportServer Service



Weekly SLA Customer Report

Customer NIX_Production
Database ID 51



Disaster per ABS component

