

# Weekly SLA Customer Report

Customer NIX\_Production  
 Database ID 51



=====  
 HARDDISK USAGE NIX\_PRD\_ABSAPP2  
 =====

	Total disk space on C (GB)	Free disk space on C (GB)
9-4-2016	200	164
8-4-2016	200	164
7-4-2016	200	164
6-4-2016	200	164
5-4-2016	200	164
4-4-2016	200	164
3-4-2016	200	42

=====  
 HARDDISK USAGE NIX\_PRD\_ABSWEB01  
 =====

	Total disk space on C (GB)	Free disk space on C (GB)
9-4-2016	300	279
8-4-2016	300	279
7-4-2016	300	279
6-4-2016	300	279
5-4-2016	300	279
4-4-2016	300	279
3-4-2016	300	279

## Weekly SLA Customer Report

Customer      NIX\_Production  
 Database ID    51



=====  
 HARDDISK USAGE    NIX\_PRD\_ORACLE\_BI1  
 =====

	Total disk space on C (GB)	Free disk space on C (GB)	Total disk space on E (GB)	Free disk space on E (GB)	Total disk space on F (GB)	Free disk space on F (GB)	Total disk space on G (GB)	Free disk space on G (GB)
9-4-2016	279	69	558	274	279	179	558	252
8-4-2016	279	69	558	273	279	179	558	237
7-4-2016	279	69	558	268	279	179	558	243
6-4-2016	279	69	558	268	279	179	558	250
5-4-2016	279	69	558	269	279	179	558	255
4-4-2016	279	69	558	270	279	179	558	262
3-4-2016	279	69	558	271	279	179	558	268

=====  
 HARDDISK USAGE    NIX\_PRD\_ORCDB1  
 =====

	Total disk space on C (GB)	Free disk space on C (GB)	Total disk space on E (GB)	Free disk space on E (GB)	Total disk space on F (GB)	Free disk space on F (GB)	Total disk space on G (GB)	Free disk space on G (GB)
9-4-2016	279	93	558	465	558	457	279	142
8-4-2016	279	93	558	465	558	457	279	144
7-4-2016	279	93	558	465	558	457	279	155
6-4-2016	279	50	558	465	558	457	279	162
5-4-2016	279	32	558	465	558	457	279	174
4-4-2016	279	32	558	465	558	457	279	177
3-4-2016	279	32	558	465	558	457	279	178

# Weekly SLA Customer Report

Customer NIX\_Production  
Database ID 51



HARDDISK USAGE NIX\_PRD\_ORCDB2

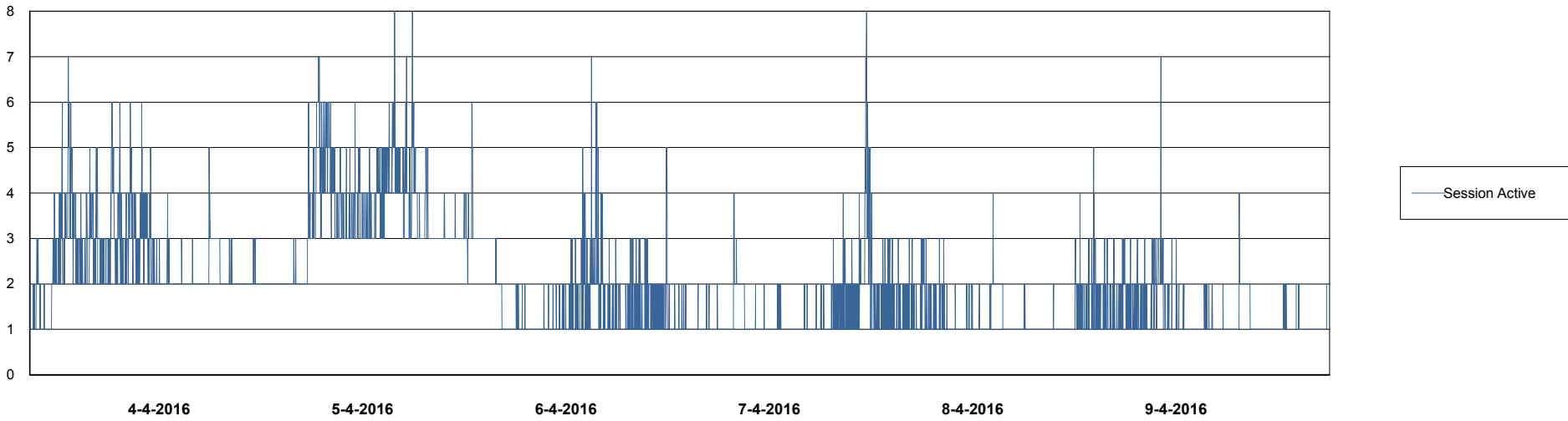
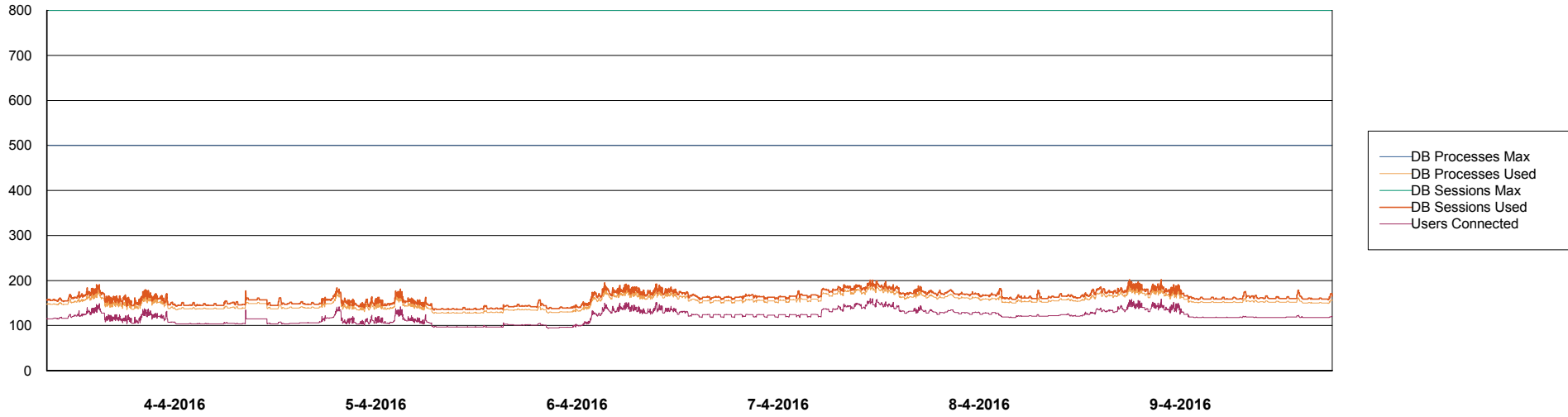
	Total disk space on C (GB)	Free disk space on C (GB)	Total disk space on E (GB)	Free disk space on E (GB)	Total disk space on F (GB)	Free disk space on F (GB)	Total disk space on G (GB)	Free disk space on G (GB)
9-4-2016	279	93	558	465	558	457	279	142
8-4-2016	279	93	558	465	558	457	279	144
7-4-2016	279	93	558	465	558	457	279	155
6-4-2016	279	50	558	465	558	457	279	162
5-4-2016	279	32	558	465	558	457	279	174
4-4-2016	279	32	558	465	558	457	279	177
3-4-2016	279	32	558	465	558	457	279	178

# Weekly SLA Customer Report

Customer NIX\_Production  
Database ID 51



DATABASE PERFORMANCE NIXDB\_Production

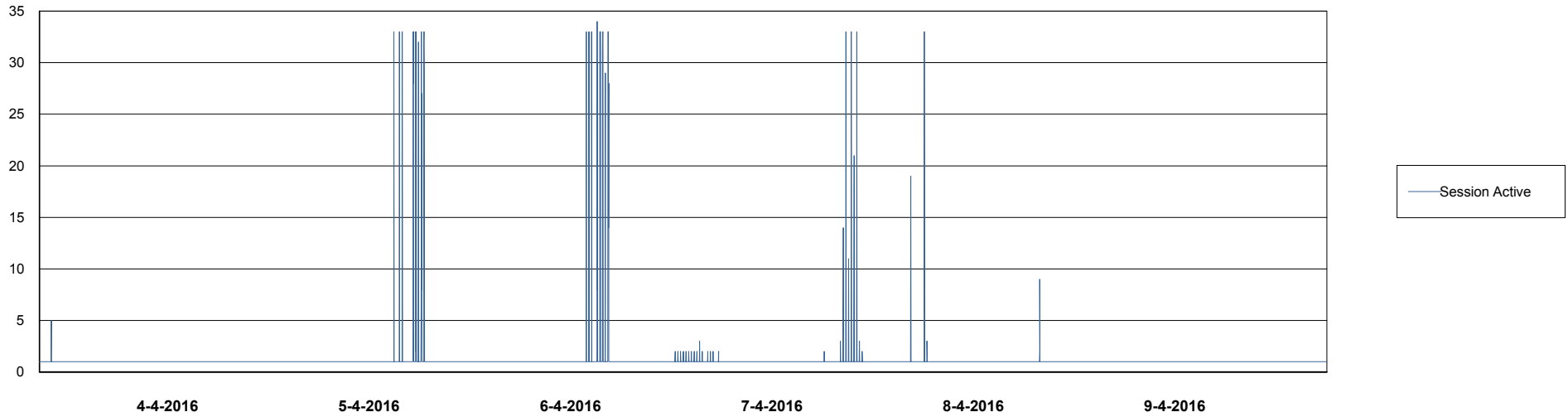
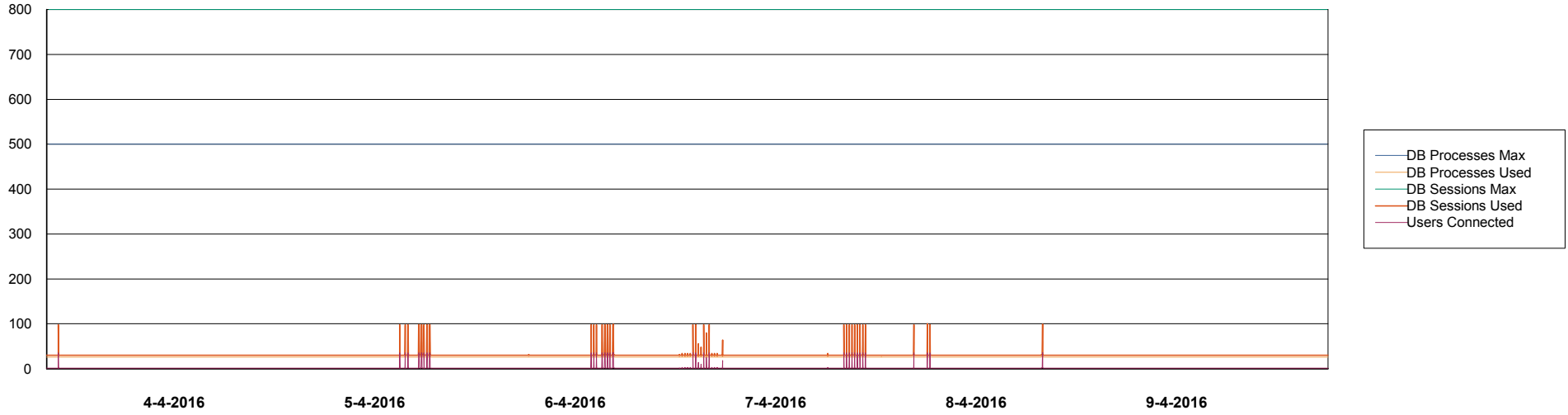


# Weekly SLA Customer Report

Customer NIX\_Production  
Database ID 51



=====  
DATABASE PERFORMANCE NIXDB\_Standby  
=====



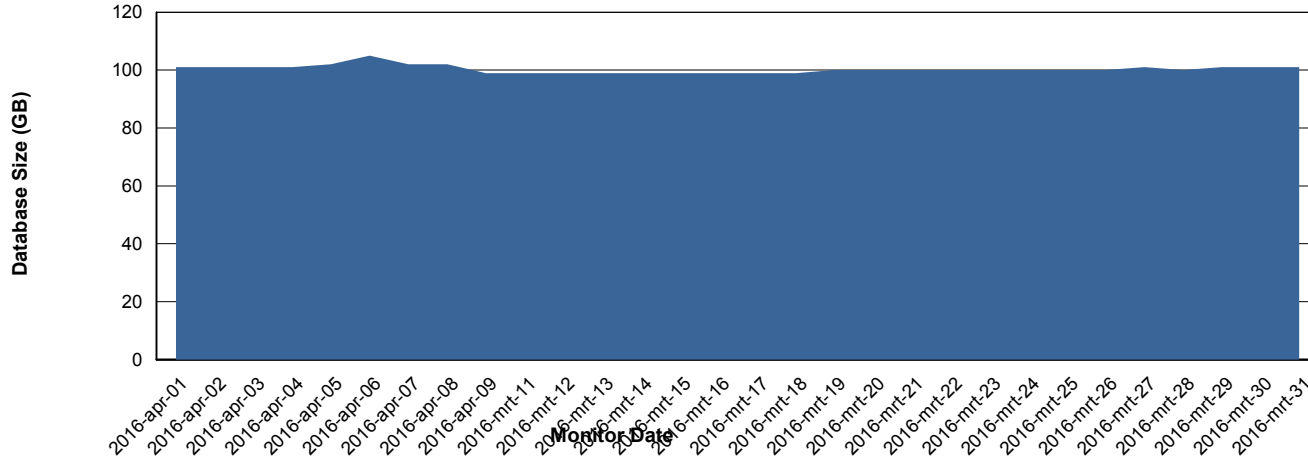
# Weekly SLA Customer Report

Customer NIX\_Production  
 Database ID 51



=====  
 DATABASE SIZE NIXDB\_Production  
 =====

## Database growth over last month



=====  
 DATABASE TABLESPACES NIXDB\_Production  
 =====

### TOTAL DATABASE SIZE PER TABLESPACE

Date	Tablespace Name	Filesize (Gb)	Usedsize (Gb)	Percentage free
9-4-2016	ABSDATA	50	39	22
	INDX	100	59	41
8-4-2016	ABSDATA	50	39	22
	INDX	100	62	38
7-4-2016	ABSDATA	50	39	22
	INDX	100	62	38
6-4-2016	ABSDATA	50	39	22
	INDX	100	61	39
5-4-2016	ABSDATA	50	39	22
	INDX	100	61	39
4-4-2016	ABSDATA	50	39	22
	INDX	100	61	39
3-4-2016	ABSDATA	50	39	22
	INDX	100	61	39

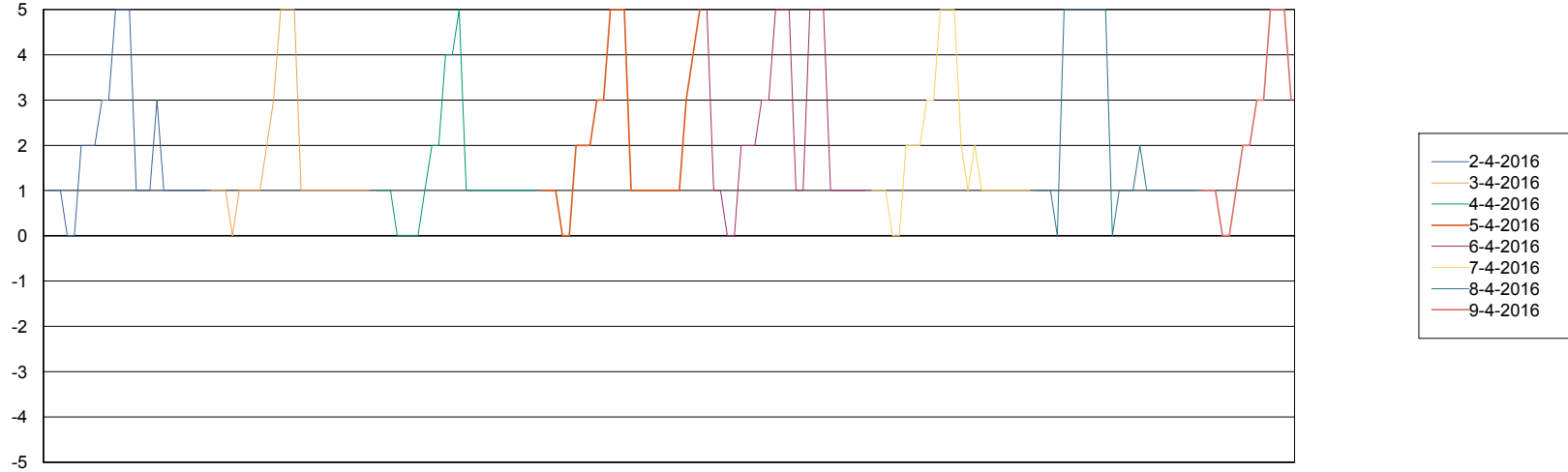
# Weekly SLA Customer Report

Customer NIX\_Production  
Database ID 51



=====  
STANDBY DATABASE HEALTH NIX\_Production  
=====

### Recovery lag for last 7 days



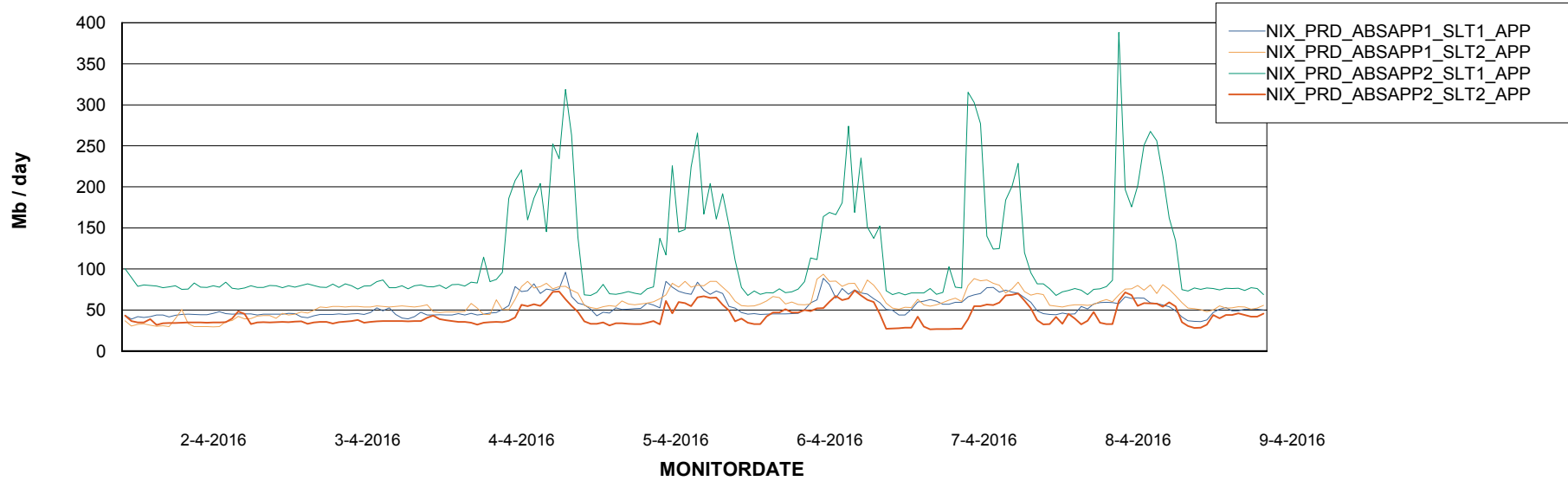
# Weekly SLA Customer Report

Customer NIX\_Production  
Database ID 51



=====  
ABSolute Application Server Services  
=====

### Avg memory used per ABS Server Service



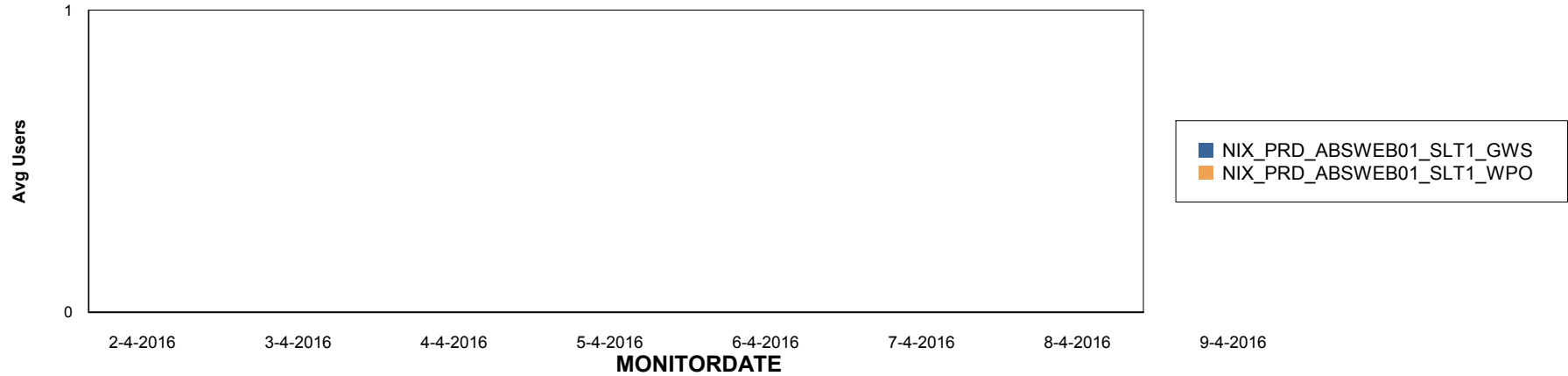
# Weekly SLA Customer Report

Customer NIX\_Production  
Database ID 51

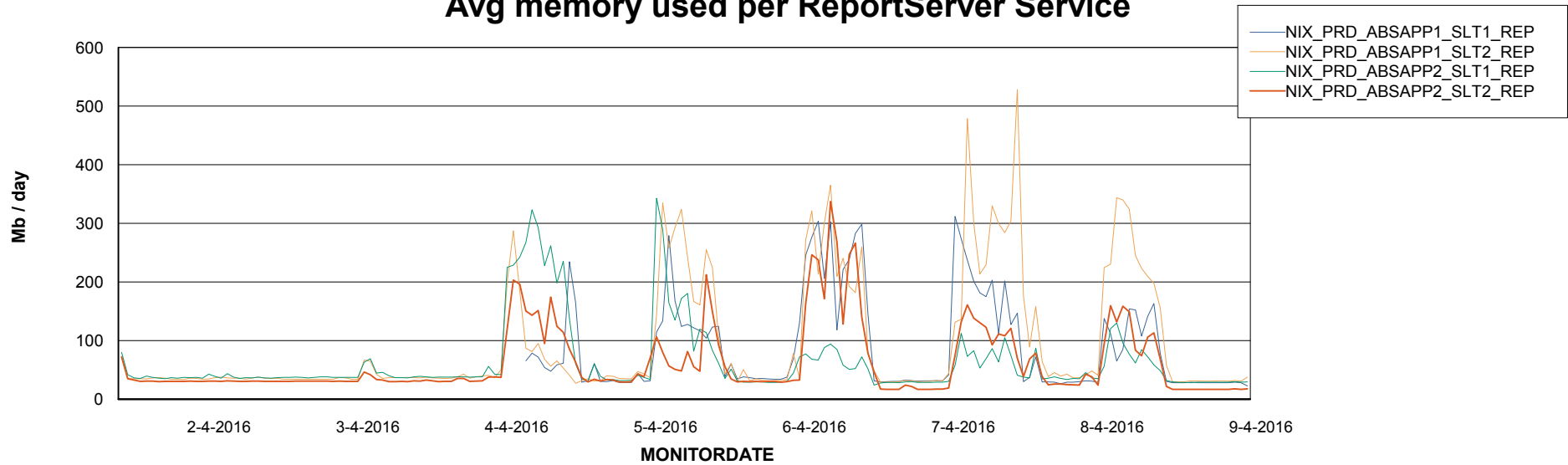


=====  
ABSolute Application ReportServer Services  
=====

## Disaster per ReportServer



## Avg memory used per ReportServer Service



# Weekly SLA Customer Report

Customer NIX\_Production  
Database ID 51



## Disaster per ABS component

