

Weekly SLA Customer Report

Customer JWR Production
Database ID 43



=====
HARDDISK USAGE JWR_PRD_JWR-ABS-01
=====

	Used disk space on / (GB)	Total disk space on / (GB)	Free disk space on / (GB)
9-4-2016	32	49	14
8-4-2016	32	49	14
7-4-2016	32	49	14
6-4-2016	32	49	14
5-4-2016	32	49	14
4-4-2016	32	49	14
3-4-2016	32	49	14

=====
HARDDISK USAGE JWR_PRD_JWR-ABS-02
=====

	Used disk space on / (GB)	Total disk space on / (GB)	Free disk space on / (GB)
9-4-2016	22	49	25
8-4-2016	24	49	23
7-4-2016	24	49	23
6-4-2016	22	49	24
5-4-2016	22	49	24
4-4-2016	24	49	23
3-4-2016	24	49	23

Weekly SLA Customer Report

Customer JWR Production
Database ID 43



=====
HARDDISK USAGE JWR_PRD_JWR-ODB-01
=====

	Used disk space on / (GB)	Total disk space on / (GB)	Free disk space on / (GB)
9-4-2016	113	148	27
8-4-2016	114	148	27
7-4-2016	114	148	27
6-4-2016	114	148	27
5-4-2016	113	148	27
4-4-2016	114	148	27
3-4-2016	113	148	28

=====
HARDDISK USAGE JWR_PRD_JWR-ODB-02
=====

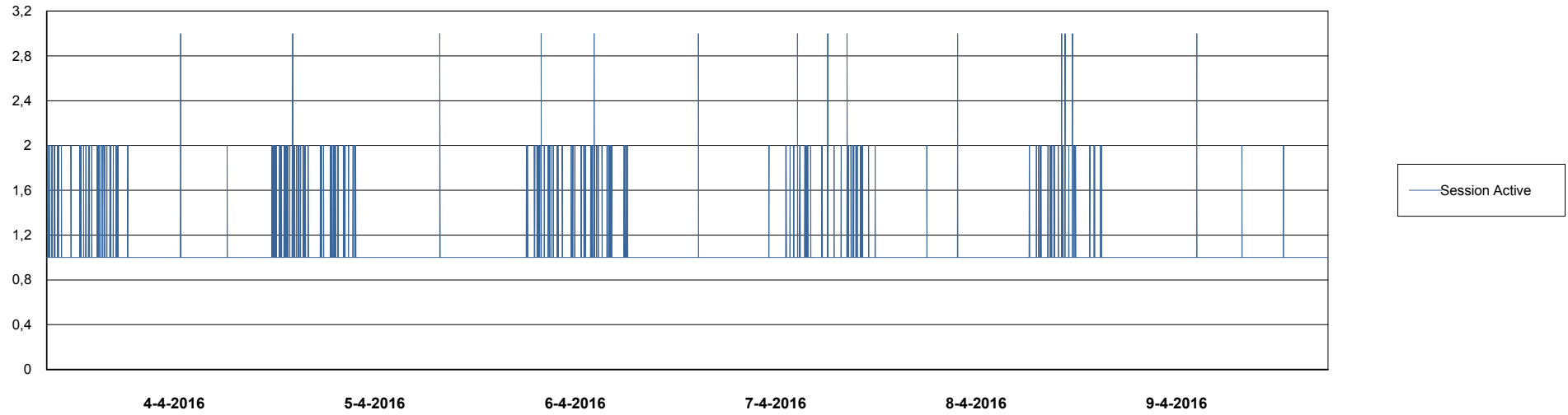
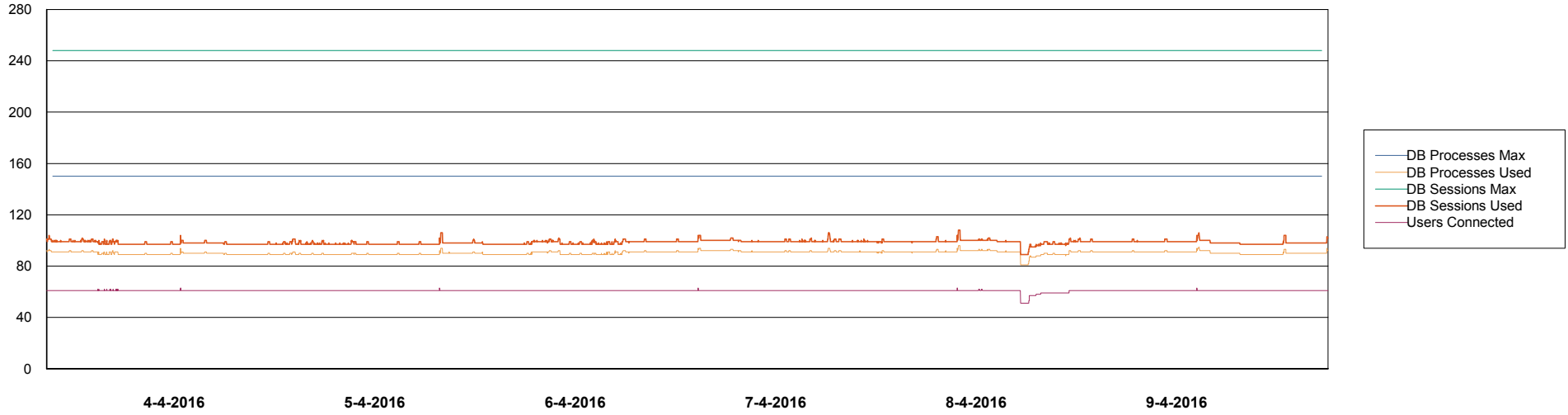
	Used disk space on / (GB)	Total disk space on / (GB)	Free disk space on / (GB)
9-4-2016	129	251	109
8-4-2016	130	251	109
7-4-2016	130	251	109
6-4-2016	130	251	109
5-4-2016	130	251	108
4-4-2016	130	251	108
3-4-2016	129	251	109

Weekly SLA Customer Report

Customer JWR Production
Database ID 43



DATABASE PERFORMANCE JWRDB_Production



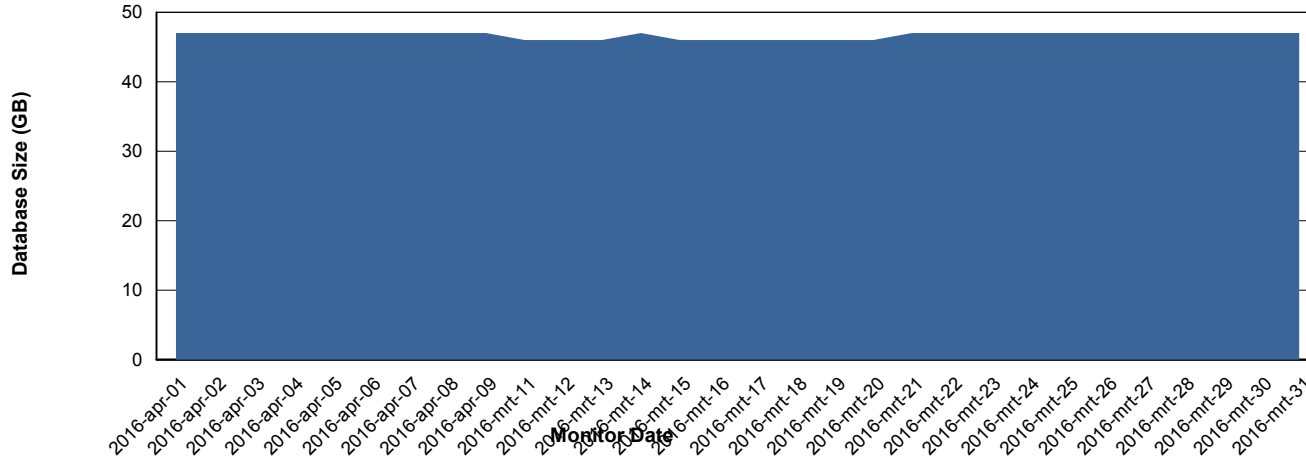
Weekly SLA Customer Report

Customer JWR Production
 Database ID 43



=====
 DATABASE SIZE JWRDB_Production
 =====

Database growth over last month



=====
 DATABASE TABLESPACES JWRDB_Production
 =====

TOTAL DATABASE SIZE PER TABLESPACE

Date	Tablespace Name	Filesize (Gb)	Usedsize (Gb)	Percentage free
9-4-2016	ABSDATA	18	15	17
	INDX	46	31	33
8-4-2016	ABSDATA	18	15	17
	INDX	46	31	33
7-4-2016	ABSDATA	18	15	17
	INDX	46	31	33
6-4-2016	ABSDATA	18	15	17
	INDX	46	31	33
5-4-2016	ABSDATA	18	15	17
	INDX	46	31	33
4-4-2016	ABSDATA	18	15	17
	INDX	46	31	33
3-4-2016	ABSDATA	18	15	17
	INDX	46	31	33

Weekly SLA Customer Report

Customer JWR Production
Database ID 43



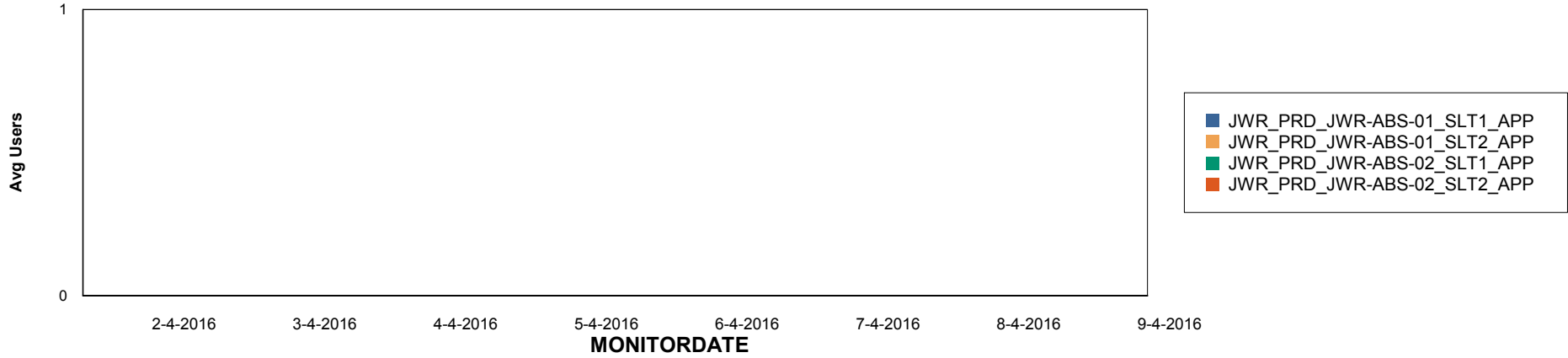
Weekly SLA Customer Report

Customer JWR Production
Database ID 43

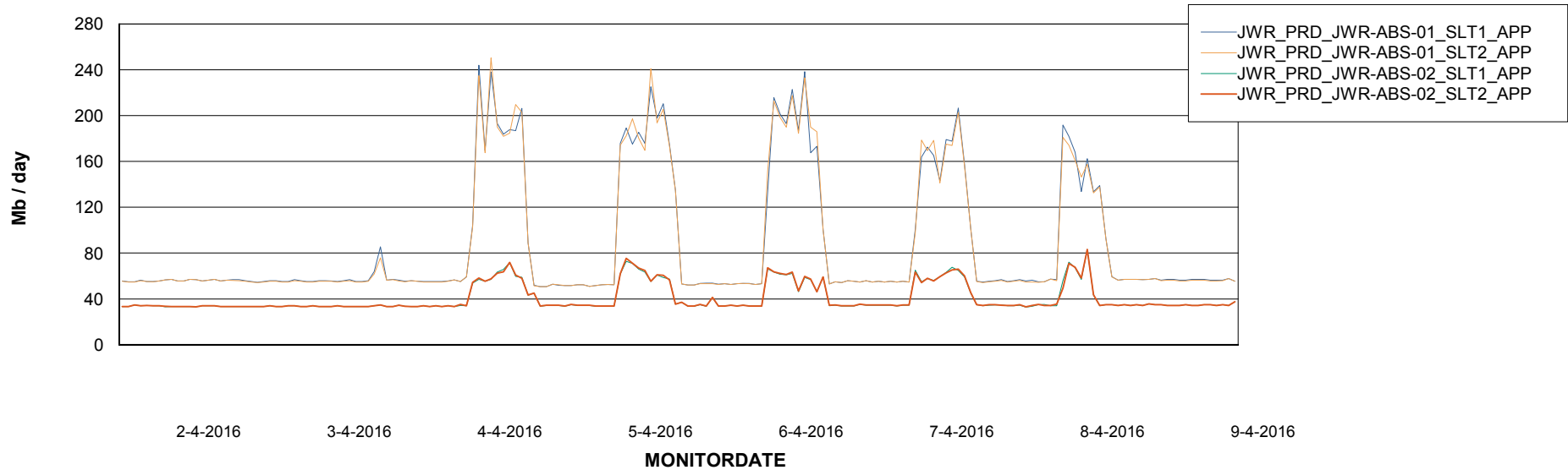


=====
ABSolute Application Server Services
=====

Disaster per ABS Server



Avg memory used per ABS Server Service



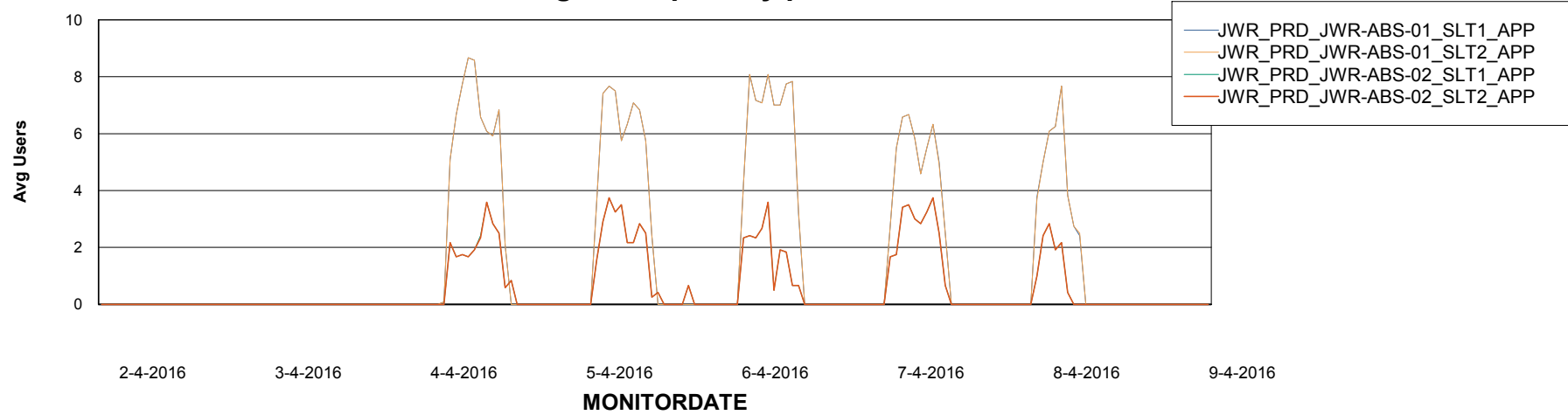
Weekly SLA Customer Report

Customer JWR Production
Database ID 43



=====
ABSolute Application Server Services
=====

Avg users per day per ABS server



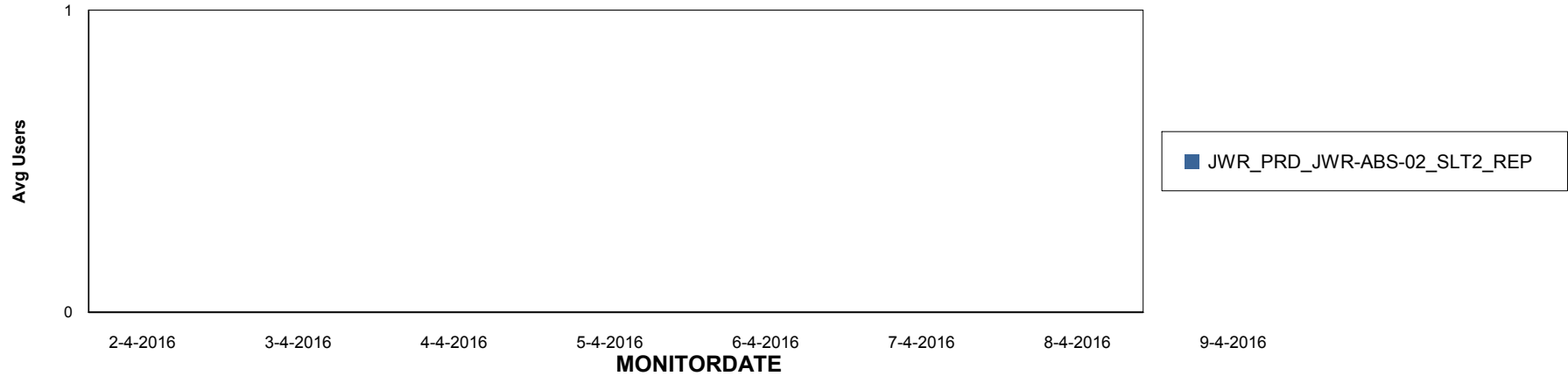
Weekly SLA Customer Report

Customer JWR Production
Database ID 43

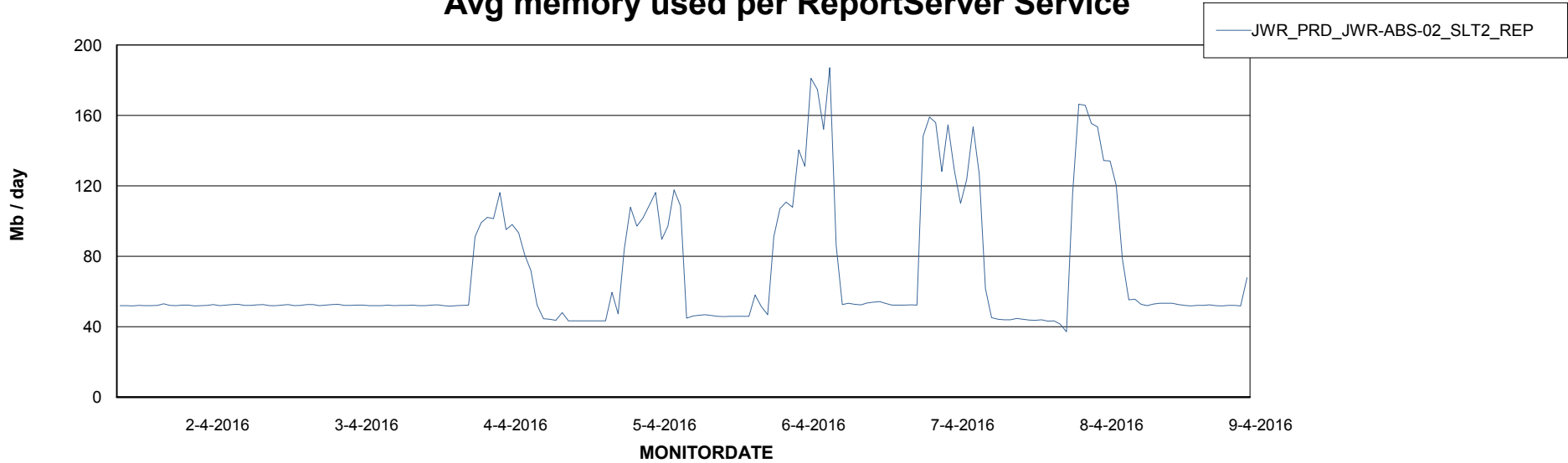


=====
ABSolute Application ReportServer Services
=====

Disaster per ReportServer



Avg memory used per ReportServer Service



Weekly SLA Customer Report

Customer JWR Production
Database ID 43



Disaster per ABS component

