

# Weekly SLA Customer Report

Customer NIX\_Production  
Database ID 51



=====  
HARDDISK USAGE NIX\_PRD\_ABSAPP2  
=====

	Total disk space on C (GB)	Free disk space on C (GB)
2-4-2016	200	19
1-4-2016	200	23
31-3-2016	200	28
30-3-2016	200	32
29-3-2016	200	33
28-3-2016	200	32
27-3-2016	200	36

=====  
HARDDISK USAGE NIX\_PRD\_ABSWEB01  
=====

	Total disk space on C (GB)	Free disk space on C (GB)
2-4-2016	300	279
1-4-2016	300	279
31-3-2016	300	279
30-3-2016	300	279
29-3-2016	300	279
28-3-2016	300	279
27-3-2016	300	279

## Weekly SLA Customer Report

Customer      NIX\_Production  
 Database ID    51



=====  
 HARDDISK USAGE    NIX\_PRD\_ORACLE\_B11  
 =====

	Total disk space on C (GB)	Free disk space on C (GB)	Total disk space on E (GB)	Free disk space on E (GB)	Total disk space on F (GB)	Free disk space on F (GB)	Total disk space on G (GB)	Free disk space on G (GB)
2-4-2016	279	69	558	272	279	179	558	265
1-4-2016	279	69	558	273	279	179	558	251
31-3-2016	279	69	558	274	279	179	558	257
30-3-2016	279	68	558	275	279	179	558	263
29-3-2016	279	68	558	276	279	179	558	269
28-3-2016	279	68	558	276	279	179	558	276
27-3-2016	279	68	558	277	279	179	558	282

=====  
 HARDDISK USAGE    NIX\_PRD\_ORCDB1  
 =====

	Total disk space on C (GB)	Free disk space on C (GB)	Total disk space on E (GB)	Free disk space on E (GB)	Total disk space on F (GB)	Free disk space on F (GB)	Total disk space on G (GB)	Free disk space on G (GB)
2-4-2016	279	32	558	465	558	457	279	180
1-4-2016	279	45	558	465	558	457	279	182
31-3-2016	279	64	558	465	558	457	279	86
30-3-2016	279	64	558	465	558	457	279	82
29-3-2016	279	64	558	465	558	457	279	84
28-3-2016	279	62	558	465	558	457	279	87
27-3-2016	279	63	558	465	558	457	279	88

# Weekly SLA Customer Report

Customer NIX\_Production  
Database ID 51



HARDDISK USAGE NIX\_PRD\_ORCDB2

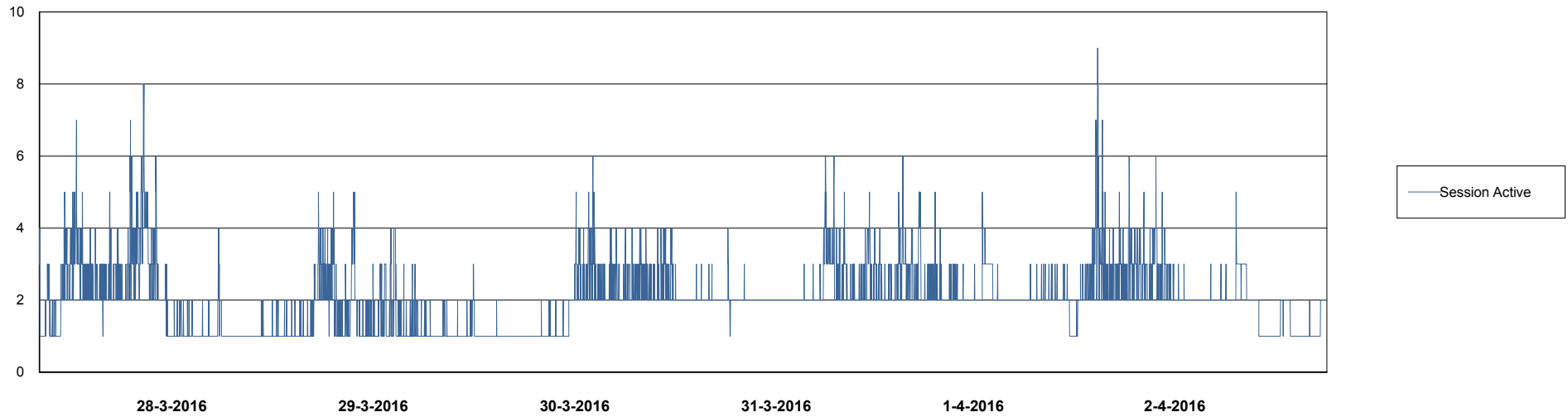
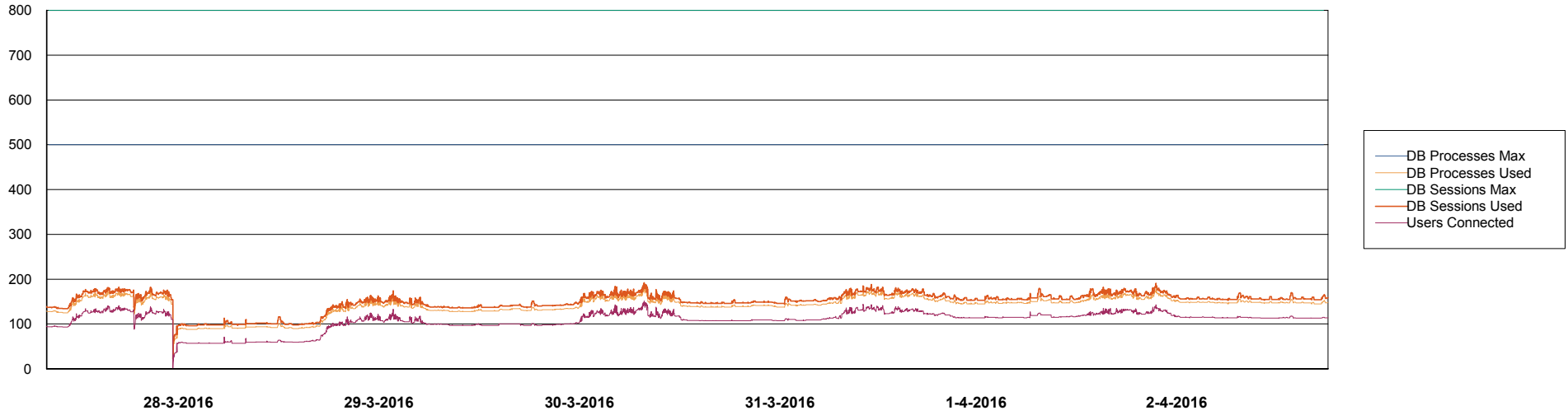
	Total disk space on C (GB)	Free disk space on C (GB)	Total disk space on E (GB)	Free disk space on E (GB)	Total disk space on F (GB)	Free disk space on F (GB)	Total disk space on G (GB)	Free disk space on G (GB)
2-4-2016	279	32	558	465	558	457	279	180
1-4-2016	279	45	558	465	558	457	279	182
31-3-2016	279	64	558	465	558	457	279	86
30-3-2016	279	64	558	465	558	457	279	82
29-3-2016	279	64	558	465	558	457	279	84
28-3-2016	279	62	558	465	558	457	279	87
27-3-2016	279	63	558	465	558	457	279	88

# Weekly SLA Customer Report

Customer NIX\_Production  
Database ID 51



DATABASE PERFORMANCE NIXDB\_Production

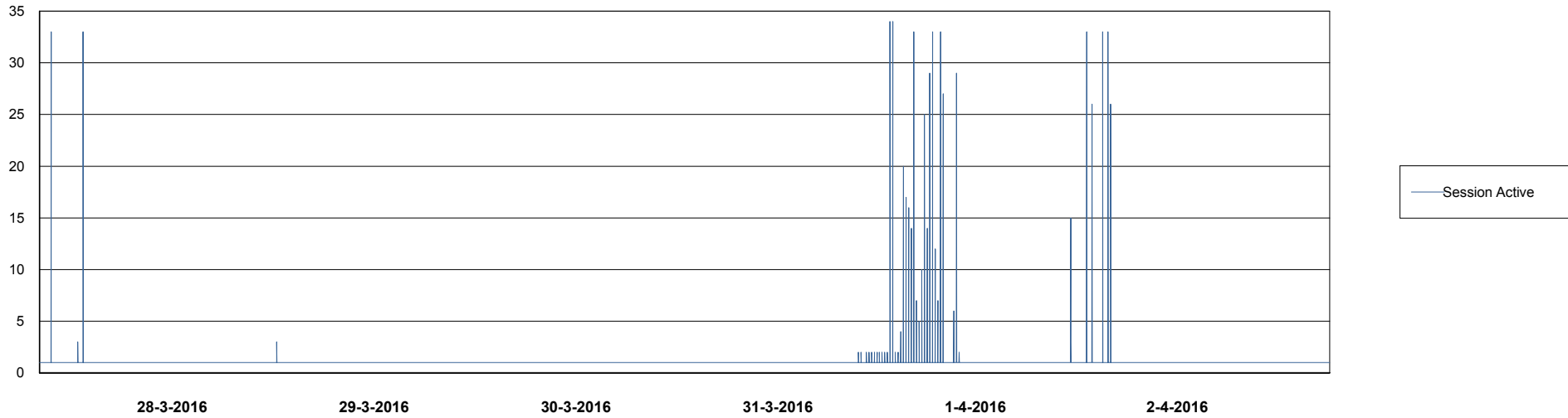
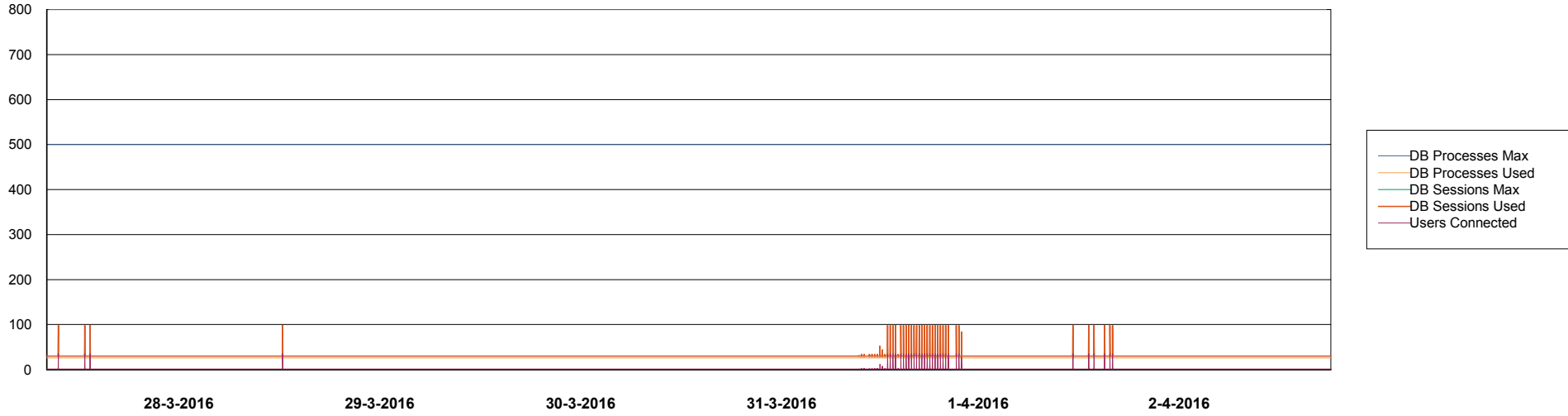


# Weekly SLA Customer Report

Customer NIX\_Production  
Database ID 51



=====  
DATABASE PERFORMANCE NIXDB\_Standby  
=====



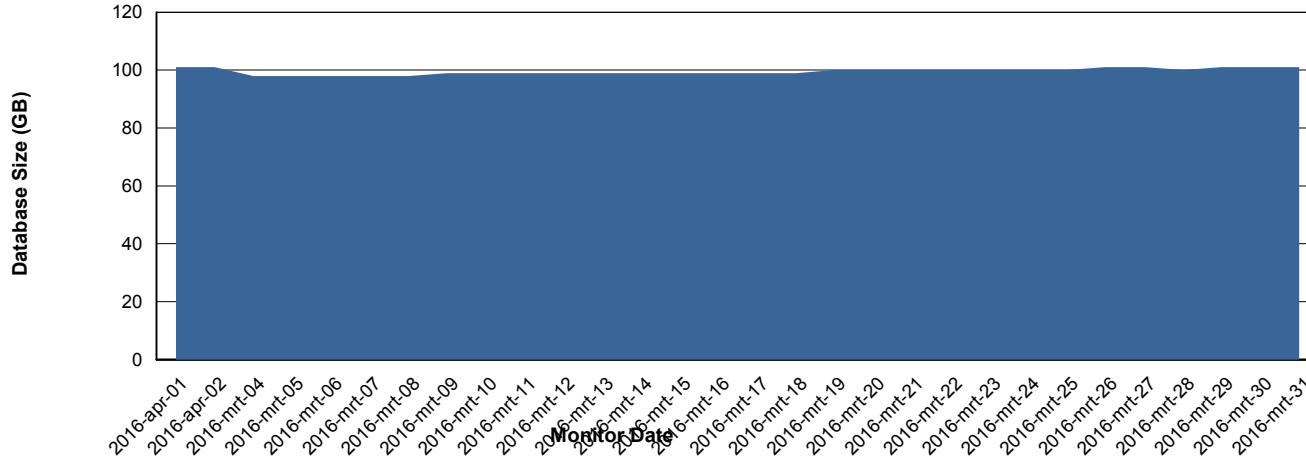
# Weekly SLA Customer Report

Customer NIX\_Production  
 Database ID 51



=====  
 DATABASE SIZE NIXDB\_Production  
 =====

## Database growth over last month



=====  
 DATABASE TABLESPACES NIXDB\_Production  
 =====

### TOTAL DATABASE SIZE PER TABLESPACE

Date	Tablespace Name	Filesize (Gb)	Usedsize (Gb)	Percentage free
2-4-2016	ABSDATA	50	39	22
	INDX	100	61	39
1-4-2016	ABSDATA	50	39	22
	INDX	100	61	39
31-3-2016	ABSDATA	50	39	22
	INDX	100	61	39
30-3-2016	ABSDATA	50	39	22
	INDX	100	61	39
29-3-2016	ABSDATA	50	38	24
	INDX	100	61	39
28-3-2016	ABSDATA	50	38	24
	INDX	100	61	39
27-3-2016	ABSDATA	50	38	24
	INDX	100	61	39

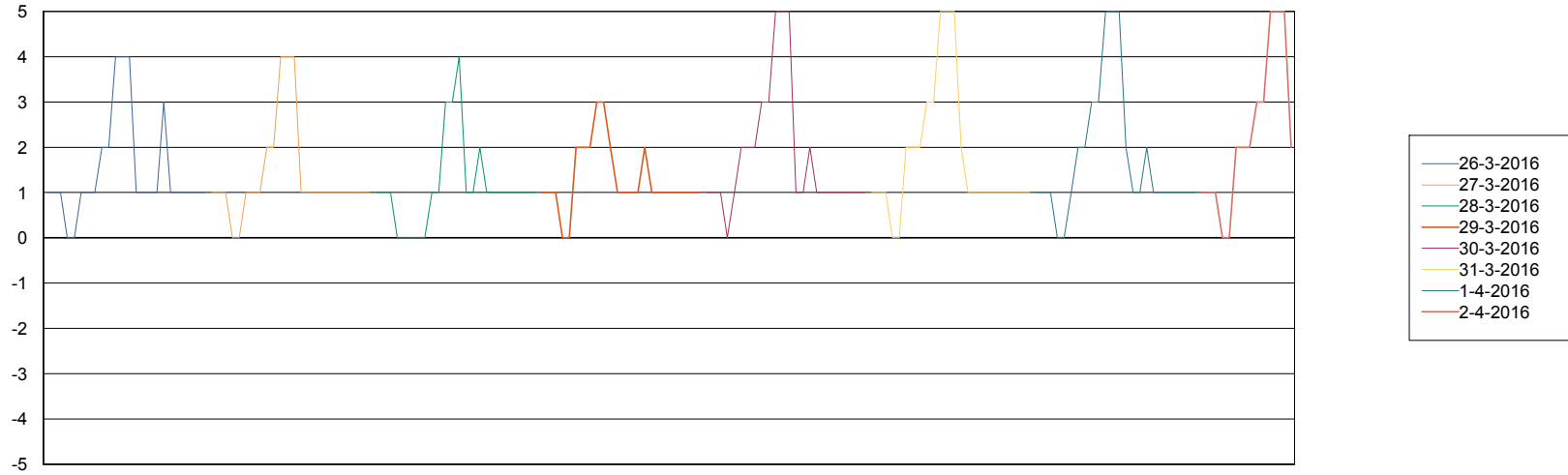
# Weekly SLA Customer Report

Customer NIX\_Production  
Database ID 51



=====  
STANDBY DATABASE HEALTH NIX\_Production  
=====

### Recovery lag for last 7 days



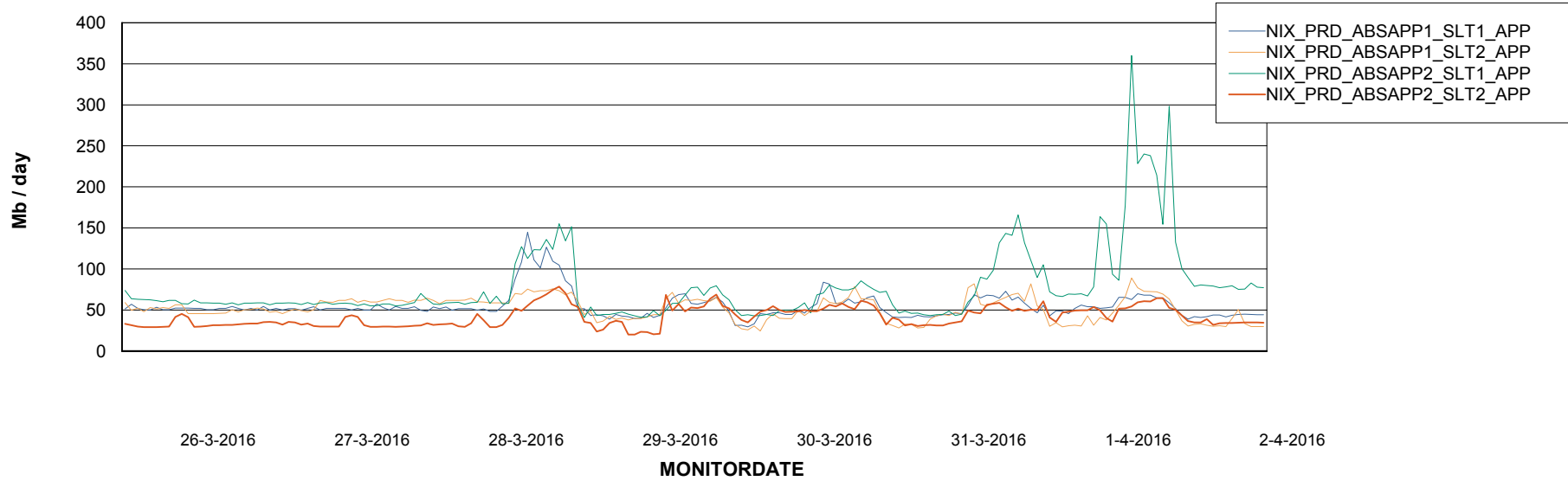
# Weekly SLA Customer Report

Customer NIX\_Production  
Database ID 51



=====  
ABSolute Application Server Services  
=====

### Avg memory used per ABS Server Service



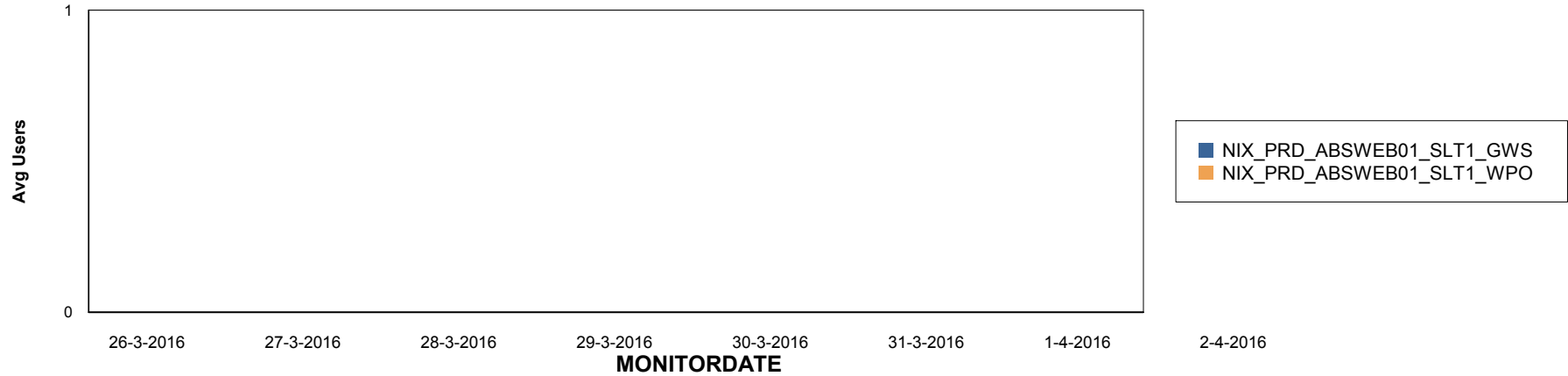
# Weekly SLA Customer Report

Customer NIX\_Production  
Database ID 51

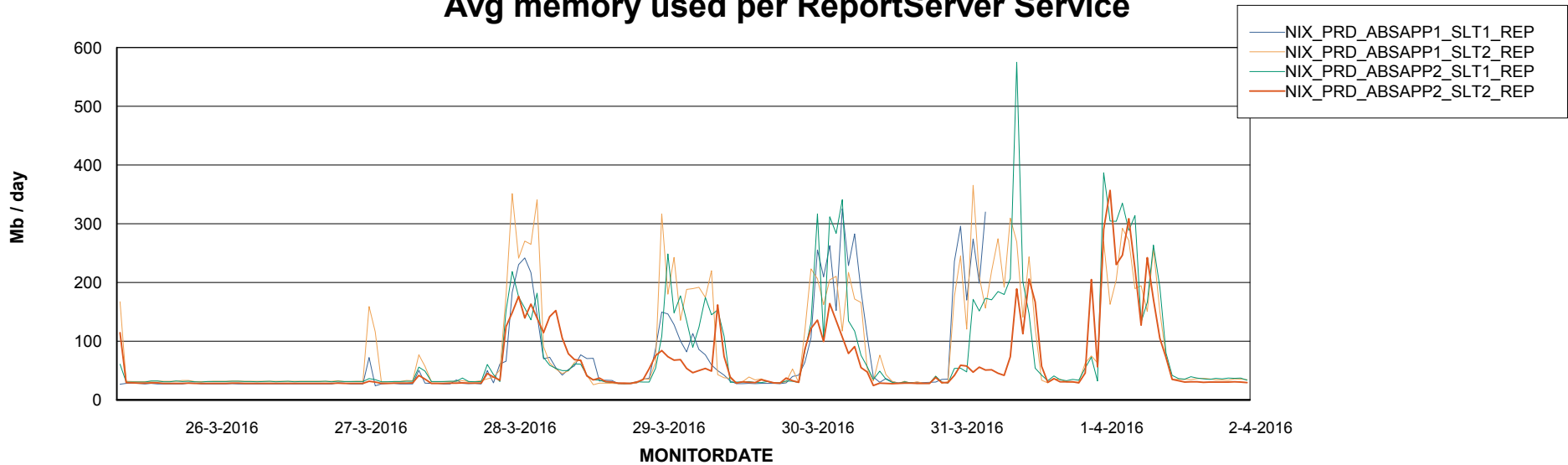


=====  
ABSolute Application ReportServer Services  
=====

## Disaster per ReportServer



## Avg memory used per ReportServer Service



# Weekly SLA Customer Report

Customer NIX\_Production  
Database ID 51



## Disaster per ABS component

