

Weekly SLA Customer Report

Customer NIX_Production
Database ID 51



=====
HARDDISK USAGE NIX_PRD_ABSAPP2
=====

	Total disk space on C (GB)	Free disk space on C (GB)
19-3-2016	200	69
18-3-2016	200	72
17-3-2016	200	76
16-3-2016	200	79
15-3-2016	200	82
14-3-2016	200	86
13-3-2016	200	90

=====
HARDDISK USAGE NIX_PRD_ABSWEB01
=====

	Total disk space on C (GB)	Free disk space on C (GB)
19-3-2016	300	280
18-3-2016	300	280
17-3-2016	300	280
16-3-2016	300	280
15-3-2016	300	280
14-3-2016	300	280
13-3-2016	300	280

Weekly SLA Customer Report

Customer NIX_Production
 Database ID 51



=====
 HARDDISK USAGE NIX_PRD_ORACLE_BI1
 =====

	Total disk space on C (GB)	Free disk space on C (GB)	Total disk space on E (GB)	Free disk space on E (GB)	Total disk space on F (GB)	Free disk space on F (GB)	Total disk space on G (GB)	Free disk space on G (GB)
19-3-2016	279	68	558	286	279	179	558	293
18-3-2016	279	68	558	287	279	179	558	279
17-3-2016	279	68	558	288	279	179	558	284
16-3-2016	279	65	558	289	279	179	558	290
15-3-2016	279	64	558	290	279	179	558	296
14-3-2016	279	64	558	292	279	179	558	302
13-3-2016	279	64	558	294	279	179	558	308

=====
 HARDDISK USAGE NIX_PRD_ORCDB1
 =====

	Total disk space on C (GB)	Free disk space on C (GB)	Total disk space on E (GB)	Free disk space on E (GB)	Total disk space on F (GB)	Free disk space on F (GB)	Total disk space on G (GB)	Free disk space on G (GB)
19-3-2016	279	66	558	465	558	457	279	102
18-3-2016	279	66	558	465	558	457	279	104
17-3-2016	279	67	558	465	558	457	279	106
16-3-2016	279	67	558	465	558	457	279	108
15-3-2016	279	67	558	465	558	457	279	110
14-3-2016	279	68	558	465	558	457	279	112
13-3-2016	279	68	558	465	558	457	279	113

Weekly SLA Customer Report

Customer NIX_Production
 Database ID 51



=====
 HARDDISK USAGE NIX_PRD_ORCDB2
 =====

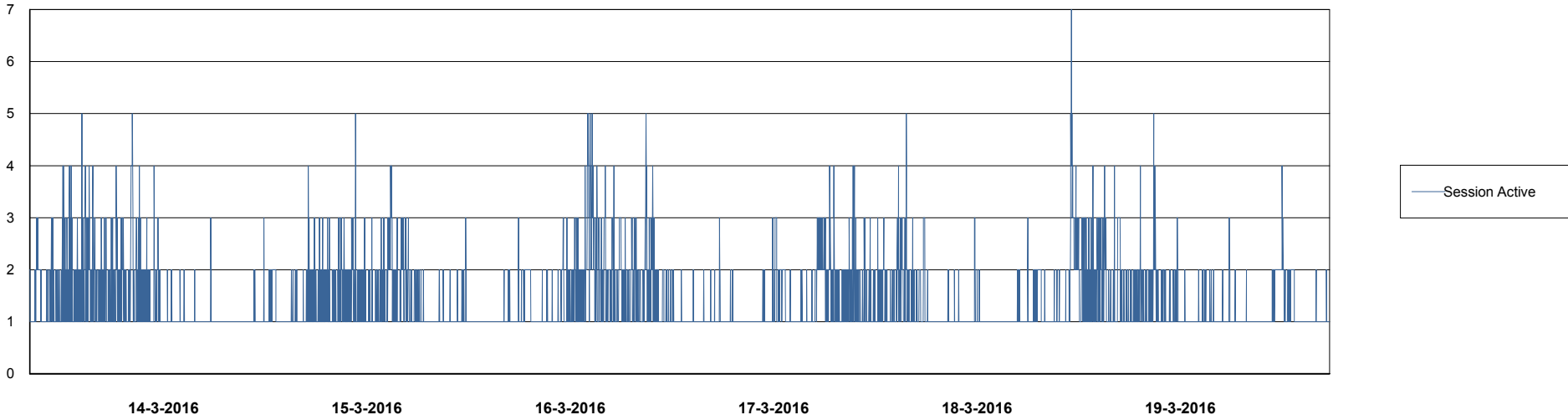
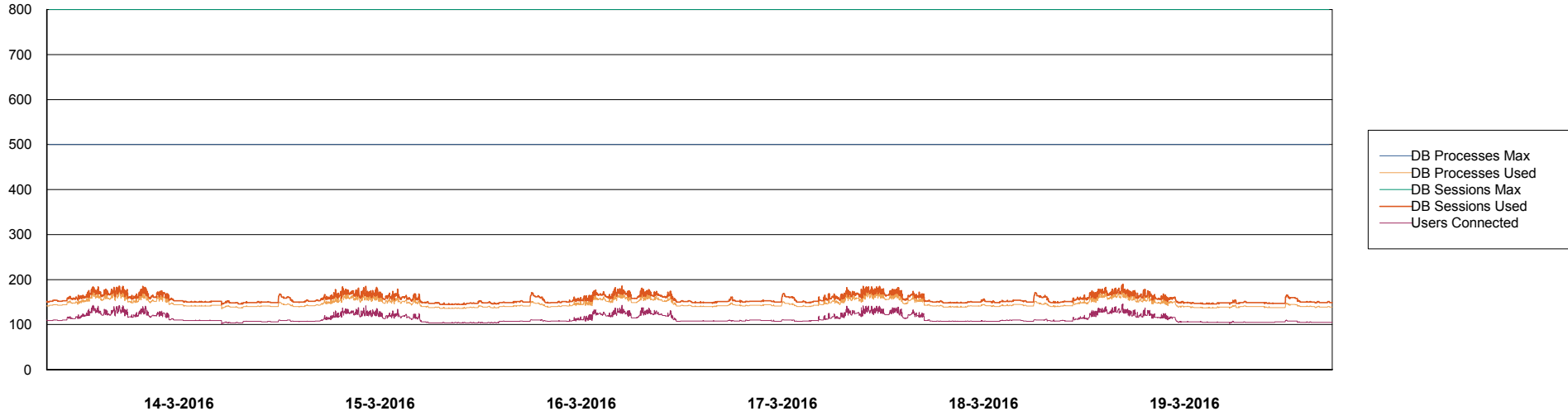
	Total disk space on C (GB)	Free disk space on C (GB)	Total disk space on E (GB)	Free disk space on E (GB)	Total disk space on F (GB)	Free disk space on F (GB)	Total disk space on G (GB)	Free disk space on G (GB)
19-3-2016	279	66	558	465	558	457	279	102
18-3-2016	279	66	558	465	558	457	279	104
17-3-2016	279	67	558	465	558	457	279	106
16-3-2016	279	67	558	465	558	457	279	108
15-3-2016	279	67	558	465	558	457	279	110
14-3-2016	279	68	558	465	558	457	279	112
13-3-2016	279	68	558	465	558	457	279	113

Weekly SLA Customer Report

Customer NIX_Production
Database ID 51



DATABASE PERFORMANCE NIXDB_Production

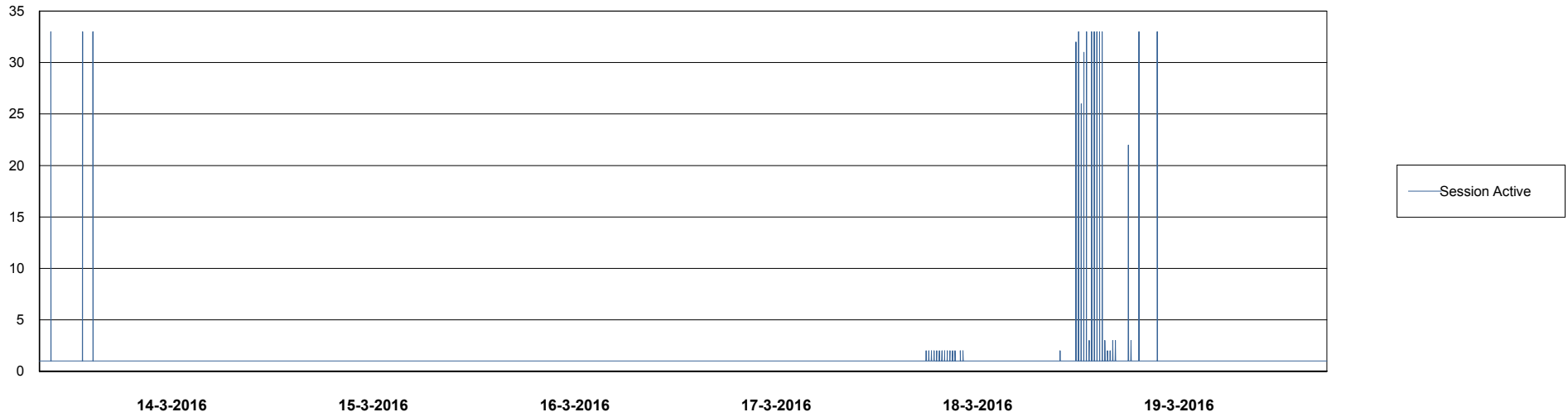
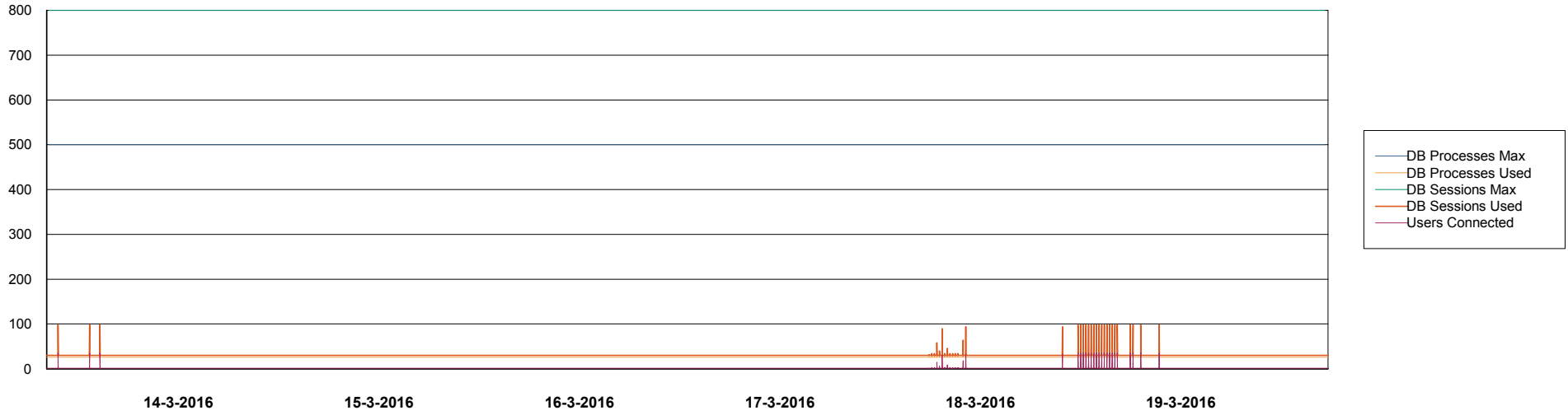


Weekly SLA Customer Report

Customer NIX_Production
Database ID 51



DATABASE PERFORMANCE NIXDB_Standby



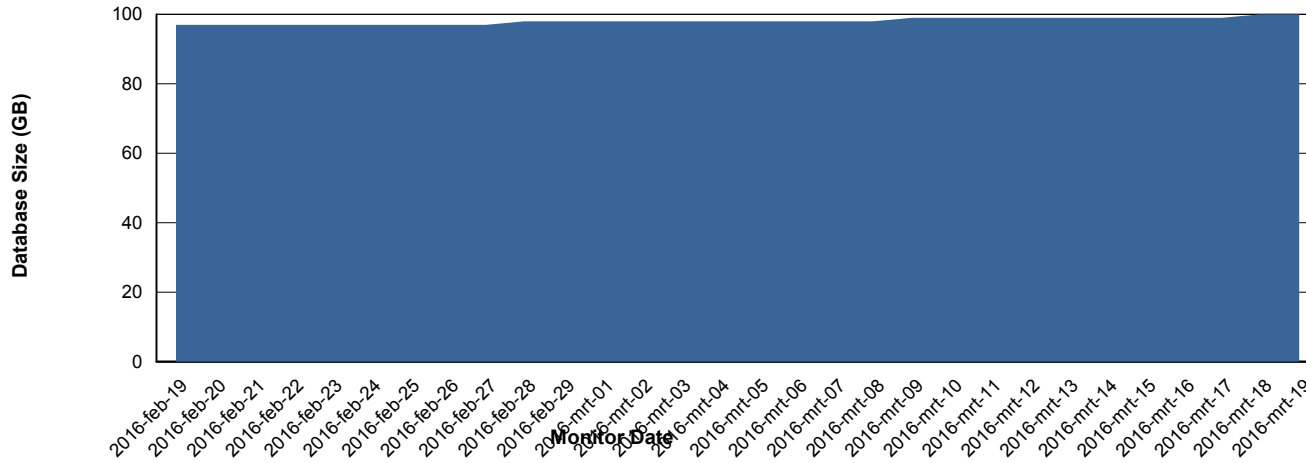
Weekly SLA Customer Report

Customer NIX_Production
 Database ID 51



=====
 DATABASE SIZE NIXDB_Production
 =====

Database growth over last month



=====
 DATABASE TABLESPACES NIXDB_Production
 =====

TOTAL DATABASE SIZE PER TABLESPACE

Date	Tablespace Name	Filesize (Gb)	Usedsize (Gb)	Percentage free
19-3-2016	ABSDATA	50	38	24
	INDX	100	60	40
18-3-2016	ABSDATA	50	38	24
	INDX	100	60	40
17-3-2016	ABSDATA	50	38	24
	INDX	100	60	40
16-3-2016	ABSDATA	50	38	24
	INDX	100	60	40
15-3-2016	ABSDATA	50	38	24
	INDX	100	60	40
14-3-2016	ABSDATA	50	38	24
	INDX	100	60	40
13-3-2016	ABSDATA	50	38	24
	INDX	100	60	40

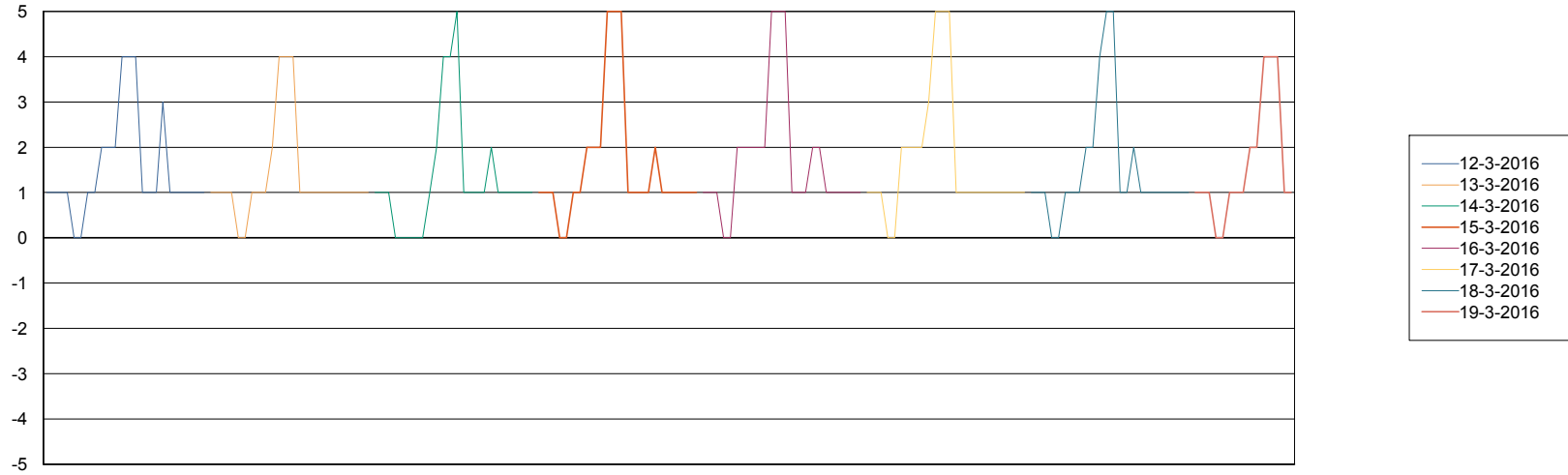
Weekly SLA Customer Report

Customer NIX_Production
Database ID 51



=====
STANDBY DATABASE HEALTH NIX_Production
=====

Recovery lag for last 7 days



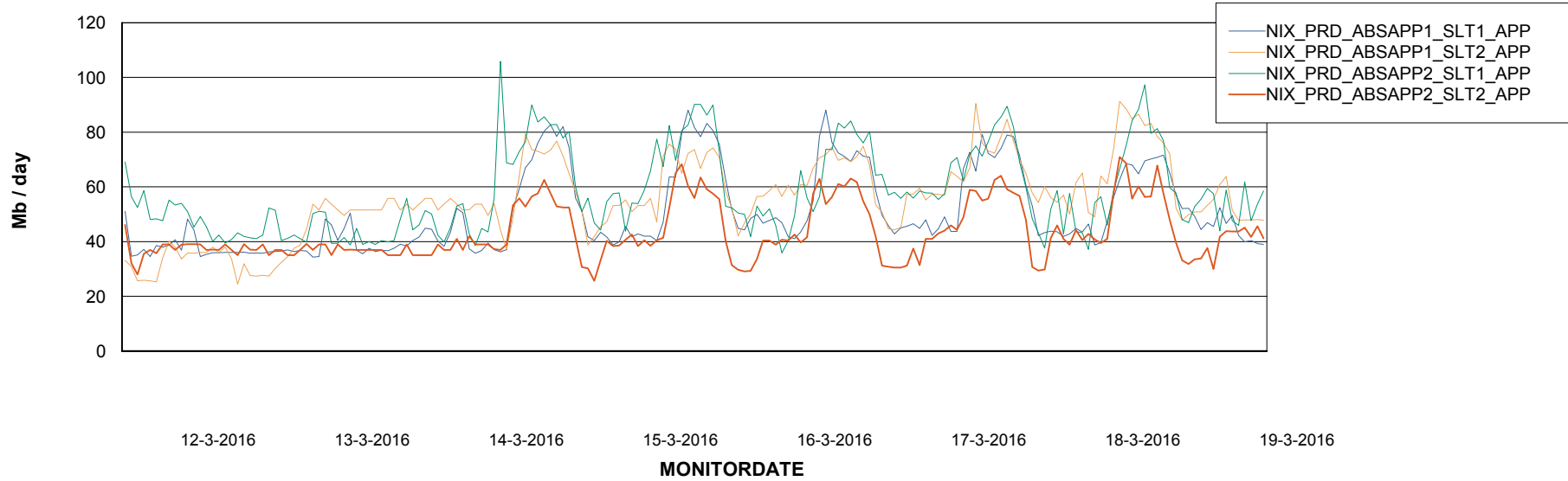
Weekly SLA Customer Report

Customer NIX_Production
Database ID 51



=====
ABSolute Application Server Services
=====

Avg memory used per ABS Server Service



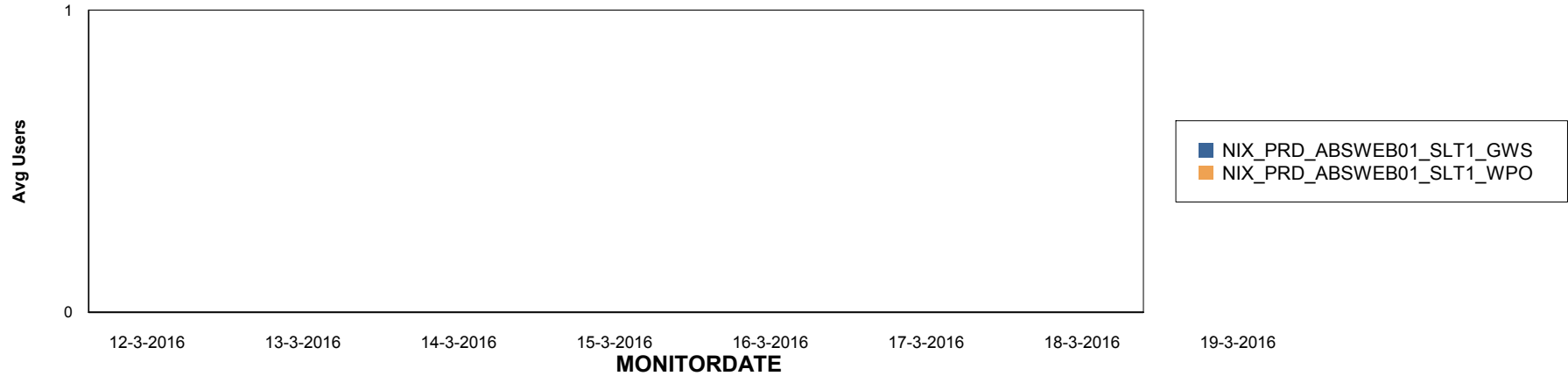
Weekly SLA Customer Report

Customer NIX_Production
Database ID 51

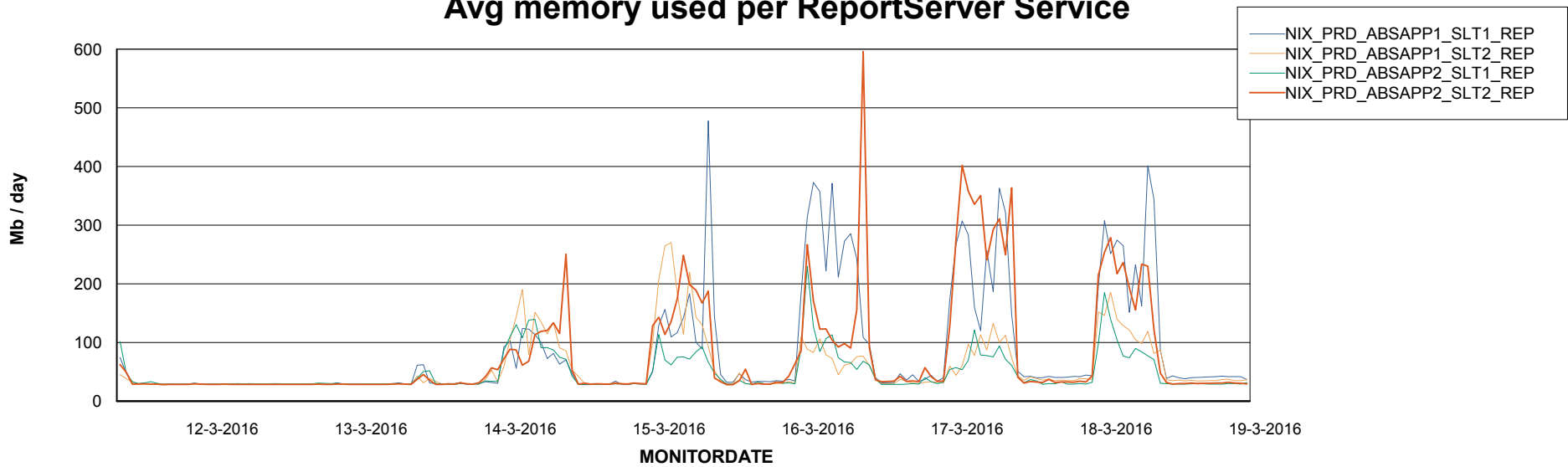


=====
ABSolute Application ReportServer Services
=====

Disaster per ReportServer



Avg memory used per ReportServer Service



Weekly SLA Customer Report

Customer NIX_Production
Database ID 51



Disaster per ABS component

