

Weekly SLA Customer Report

Customer NIX_Production
 Database ID 51



=====
 HARDDISK USAGE NIX_PRD_ABSAPP2
 =====

	Total disk space on C (GB)	Free disk space on C (GB)
20-2-2016	200	154
19-2-2016	200	154
18-2-2016	200	154
17-2-2016	200	155
16-2-2016	200	155
15-2-2016	200	155
14-2-2016	200	155

=====
 HARDDISK USAGE NIX_PRD_ABSWEB01
 =====

	Total disk space on C (GB)	Free disk space on C (GB)
20-2-2016	300	280
19-2-2016	300	280
18-2-2016	300	280
17-2-2016	300	280
16-2-2016	300	280
15-2-2016	300	280
14-2-2016	300	280

Weekly SLA Customer Report

Customer NIX_Production
 Database ID 51



=====
 HARDDISK USAGE NIX_PRD_ORACLE_B11
 =====

	Total disk space on C (GB)	Free disk space on C (GB)	Total disk space on E (GB)	Free disk space on E (GB)	Total disk space on F (GB)	Free disk space on F (GB)	Total disk space on G (GB)	Free disk space on G (GB)
20-2-2016	279	66	558	313	279	103	558	356
19-2-2016	279	66	558	314	279	111	558	352
18-2-2016	279	66	558	315	279	123	558	357
17-2-2016	279	66	558	316	279	136	558	369
16-2-2016	279	66	558	317	279	149	558	259
15-2-2016	279	69	558	309	279	160	558	184
14-2-2016	279	80	558	306	279	101	558	180

=====
 HARDDISK USAGE NIX_PRD_ORCDB1
 =====

	Total disk space on C (GB)	Free disk space on C (GB)	Total disk space on E (GB)	Free disk space on E (GB)	Total disk space on F (GB)	Free disk space on F (GB)	Total disk space on G (GB)	Free disk space on G (GB)
20-2-2016	279	112	558	465	558	457	279	148
19-2-2016	279	112	558	465	558	457	279	65
18-2-2016	279	112	558	465	558	457	279	29
17-2-2016	279	112	558	465	558	457	279	32
16-2-2016	279	112	558	465	558	457	279	34
15-2-2016	279	112	558	465	558	457	279	36
14-2-2016	279	112	558	465	558	457	279	37

Weekly SLA Customer Report

Customer NIX_Production
 Database ID 51



=====
 HARDDISK USAGE NIX_PRD_ORCDB2
 =====

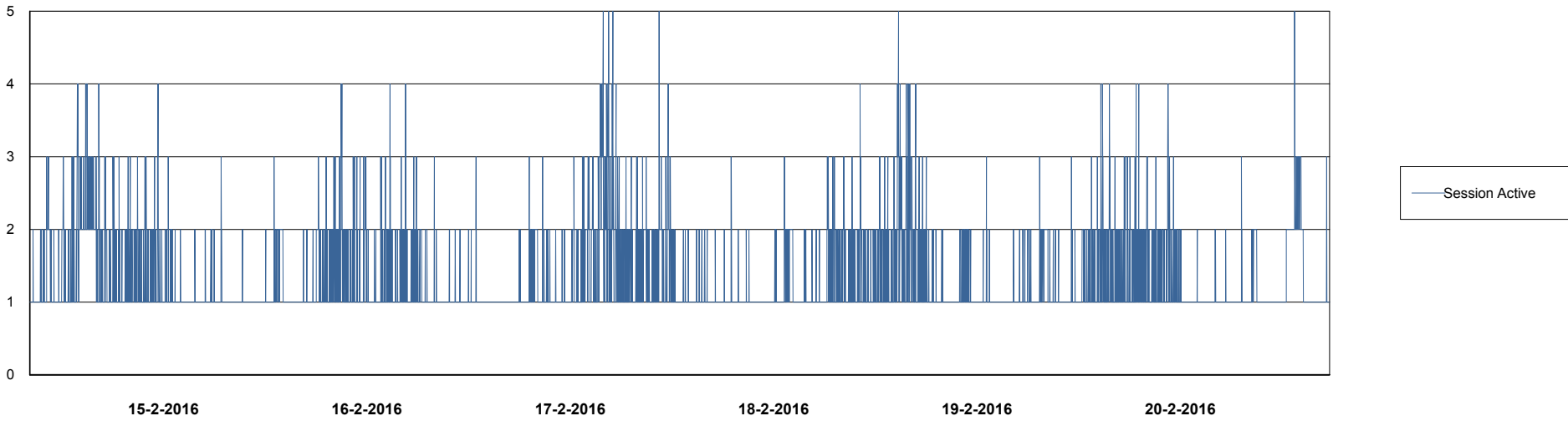
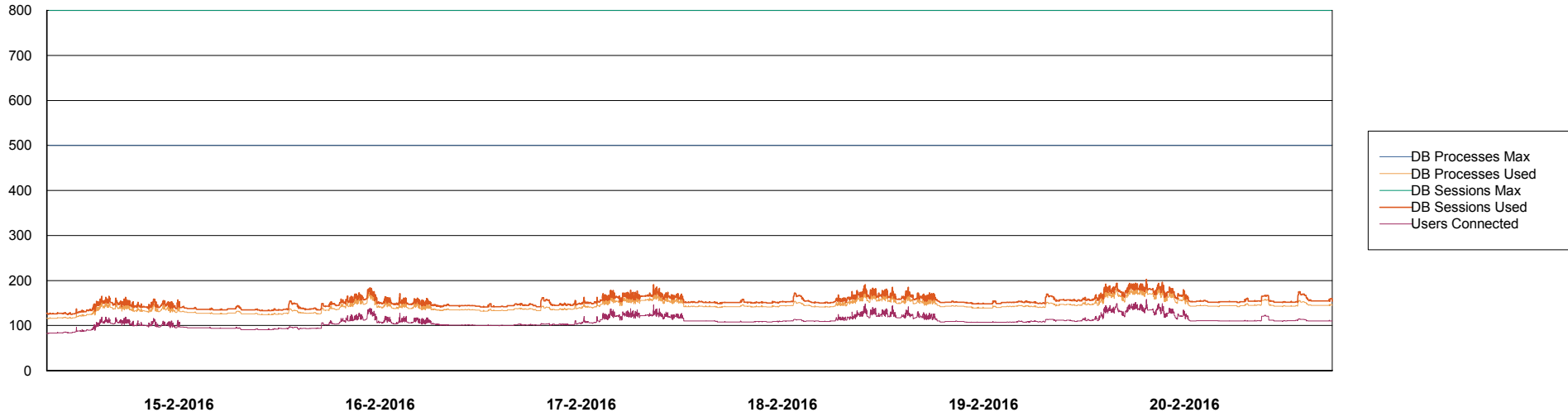
	Total disk space on C (GB)	Free disk space on C (GB)	Total disk space on E (GB)	Free disk space on E (GB)	Total disk space on F (GB)	Free disk space on F (GB)	Total disk space on G (GB)	Free disk space on G (GB)
20-2-2016	279	112	558	465	558	457	279	148
19-2-2016	279	112	558	465	558	457	279	65
18-2-2016	279	112	558	465	558	457	279	29
17-2-2016	279	112	558	465	558	457	279	32
16-2-2016	279	112	558	465	558	457	279	34
15-2-2016	279	112	558	465	558	457	279	36
14-2-2016	279	112	558	465	558	457	279	37

Weekly SLA Customer Report

Customer NIX_Production
Database ID 51



DATABASE PERFORMANCE NIXDB_Production

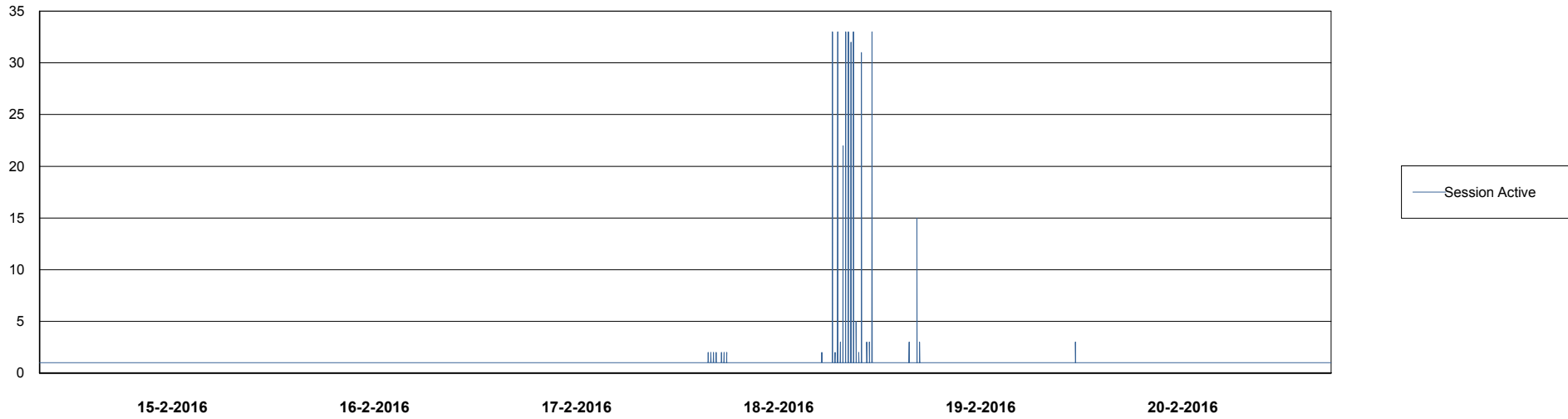
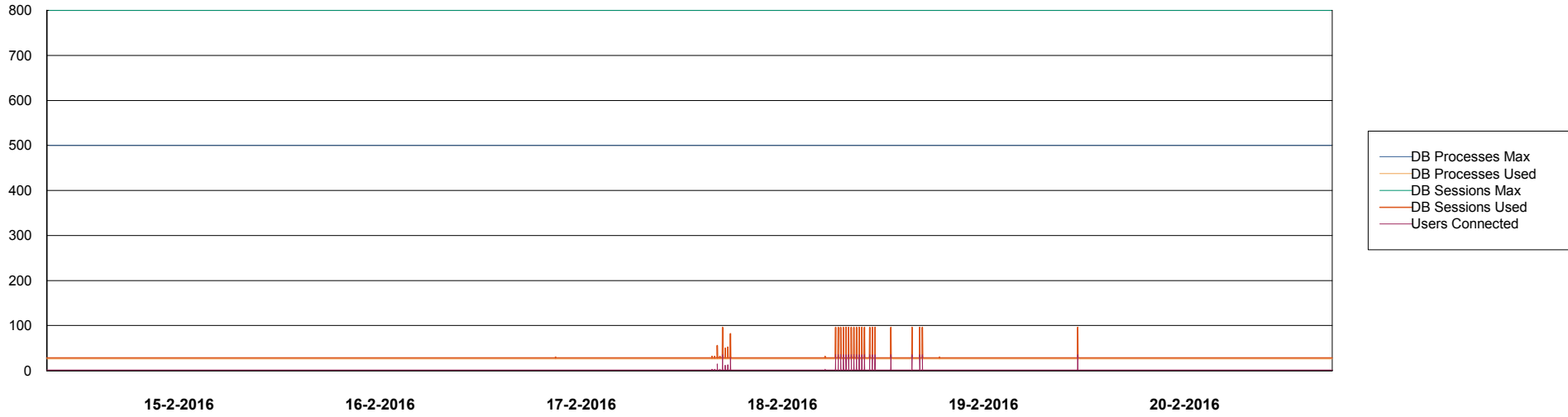


Weekly SLA Customer Report

Customer NIX_Production
Database ID 51



DATABASE PERFORMANCE NIXDB_Standby



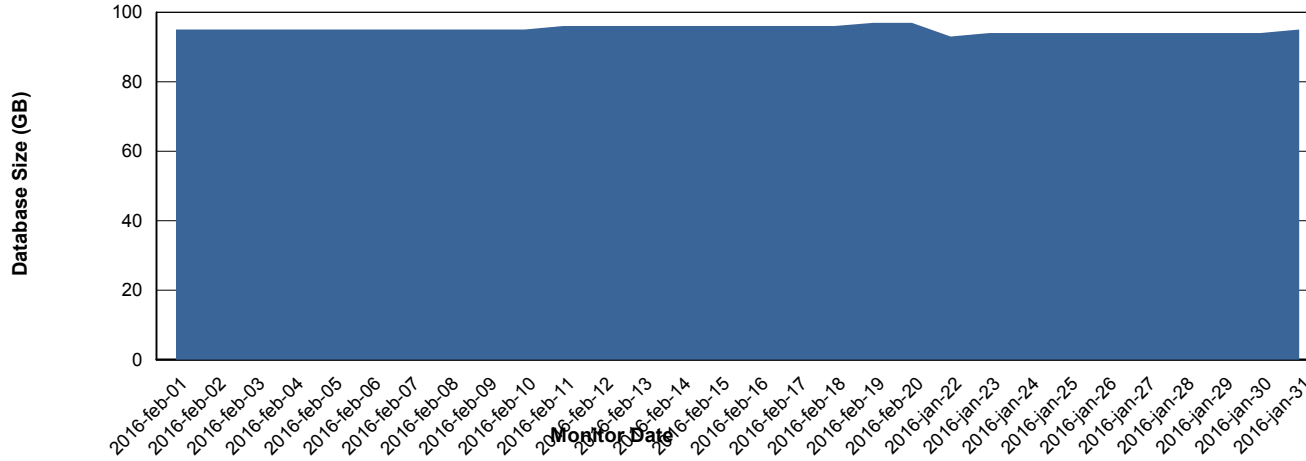
Weekly SLA Customer Report

Customer NIX_Production
 Database ID 51



=====
 DATABASE SIZE NIXDB_Production
 =====

Database growth over last month



=====
 DATABASE TABLESPACES NIXDB_Production
 =====

TOTAL DATABASE SIZE PER TABLESPACE

Date	Tablespace Name	Filesize (Gb)	Usedsize (Gb)	Percentage free
20-2-2016	ABSDATA	50	37	26
	INDX	100	58	42
19-2-2016	ABSDATA	50	37	26
	INDX	100	58	42
18-2-2016	ABSDATA	50	37	26
	INDX	100	58	42
17-2-2016	ABSDATA	50	37	26
	INDX	100	58	42
16-2-2016	ABSDATA	50	37	26
	INDX	100	58	42
15-2-2016	ABSDATA	50	37	26
	INDX	100	57	43
14-2-2016	ABSDATA	50	37	26
	INDX	100	57	43

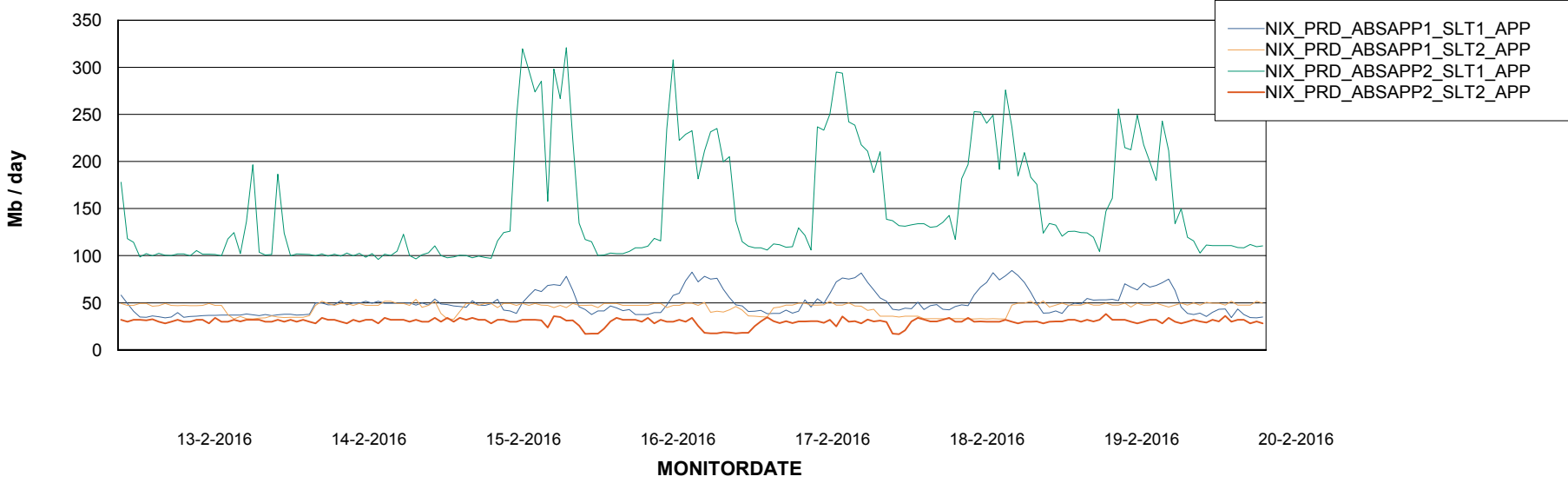
Weekly SLA Customer Report

Customer NIX_Production
Database ID 51



=====
ABSolute Application Server Services
=====

Avg memory used per ABS Server Service



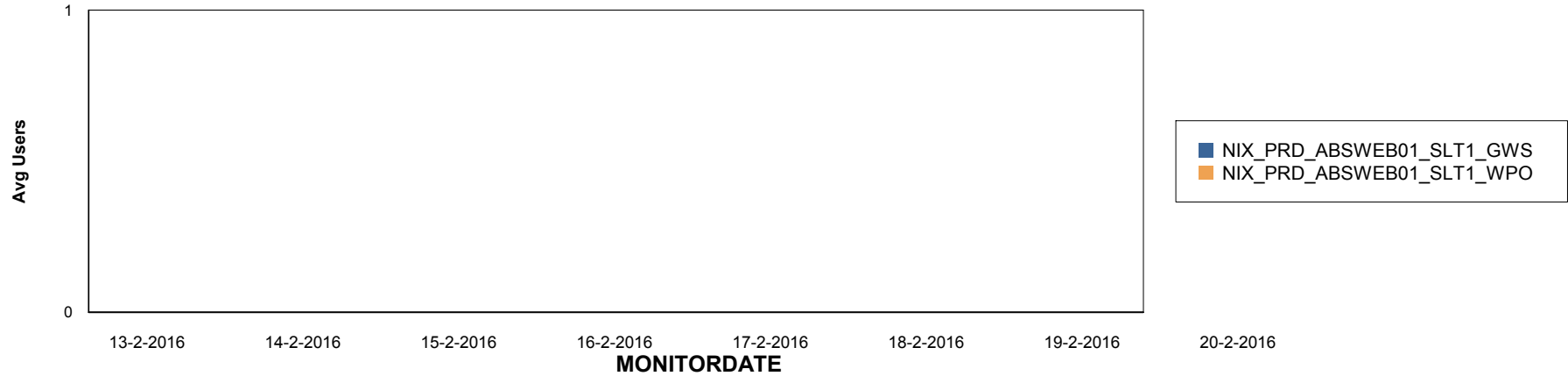
Weekly SLA Customer Report

Customer NIX_Production
Database ID 51

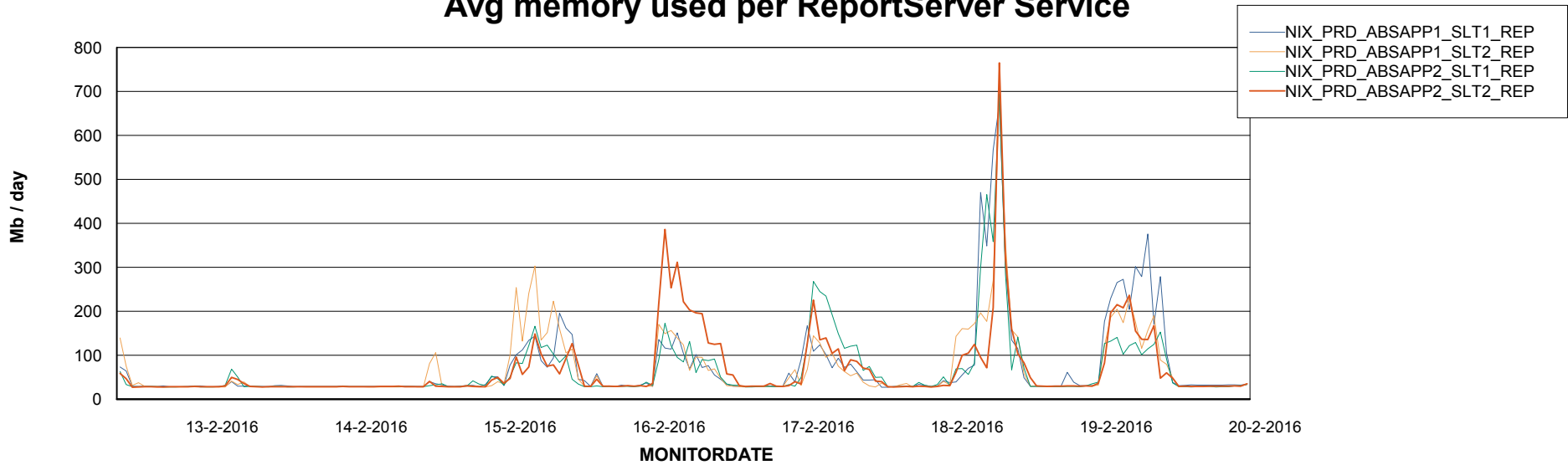


=====
ABSolute Application ReportServer Services
=====

Disaster per ReportServer



Avg memory used per ReportServer Service



Weekly SLA Customer Report

Customer NIX_Production
Database ID 51



Disaster per ABS component

