

Weekly SLA Customer Report

Customer NIX_Production
 Database ID 51



=====
 HARDDISK USAGE NIX_PRD_ABSAPP2
 =====

	Total disk space on C (GB)	Free disk space on C (GB)
13-2-2016	200	155
12-2-2016	200	155
11-2-2016	200	155
10-2-2016	200	155
9-2-2016	200	155
8-2-2016	200	155
7-2-2016	200	155

=====
 HARDDISK USAGE NIX_PRD_ABSWEB01
 =====

	Total disk space on C (GB)	Free disk space on C (GB)
13-2-2016	300	280
12-2-2016	300	280
11-2-2016	300	280
10-2-2016	300	279
9-2-2016	300	279
8-2-2016	300	279
7-2-2016	300	279

Weekly SLA Customer Report

Customer NIX_Production
 Database ID 51



=====
 HARDDISK USAGE NIX_PRD_ORACLE_B11
 =====

	Total disk space on C (GB)	Free disk space on C (GB)	Total disk space on E (GB)	Free disk space on E (GB)	Total disk space on F (GB)	Free disk space on F (GB)	Total disk space on G (GB)	Free disk space on G (GB)
13-2-2016	279	83	558	307	279	109	558	181
12-2-2016	279	83	558	310	279	118	558	185
11-2-2016	279	82	558	320	279	129	558	204
10-2-2016	279	81	558	322	279	142	558	227
9-2-2016	279	81	558	322	279	154	558	222
8-2-2016	279	83	558	322	279	170	558	214
7-2-2016	279	94	558	322	279	179	558	209

=====
 HARDDISK USAGE NIX_PRD_ORCDB1
 =====

	Total disk space on C (GB)	Free disk space on C (GB)	Total disk space on E (GB)	Free disk space on E (GB)	Total disk space on F (GB)	Free disk space on F (GB)	Total disk space on G (GB)	Free disk space on G (GB)
13-2-2016	279	112	558	465	558	457	279	39
12-2-2016	279	112	558	465	558	457	279	40
11-2-2016	279	112	558	465	558	457	279	42
10-2-2016	279	112	558	465	558	457	279	44
9-2-2016	279	112	558	465	558	457	279	46
8-2-2016	279	112	558	465	558	457	279	48
7-2-2016	279	112	558	465	558	457	279	49

Weekly SLA Customer Report

Customer NIX_Production
 Database ID 51



=====
 HARDDISK USAGE NIX_PRD_ORCDB2
 =====

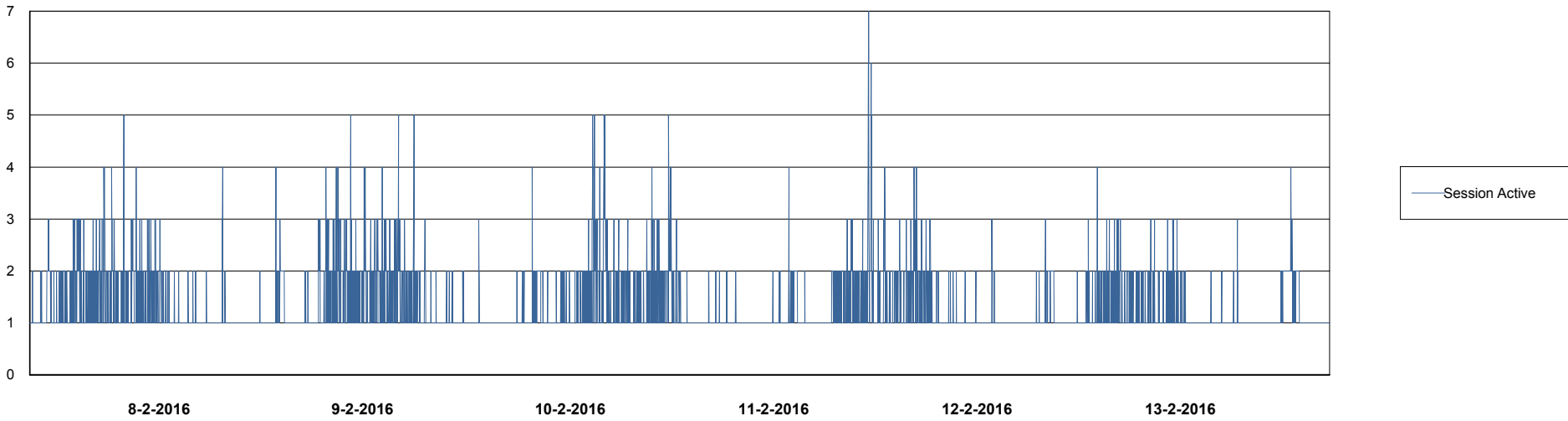
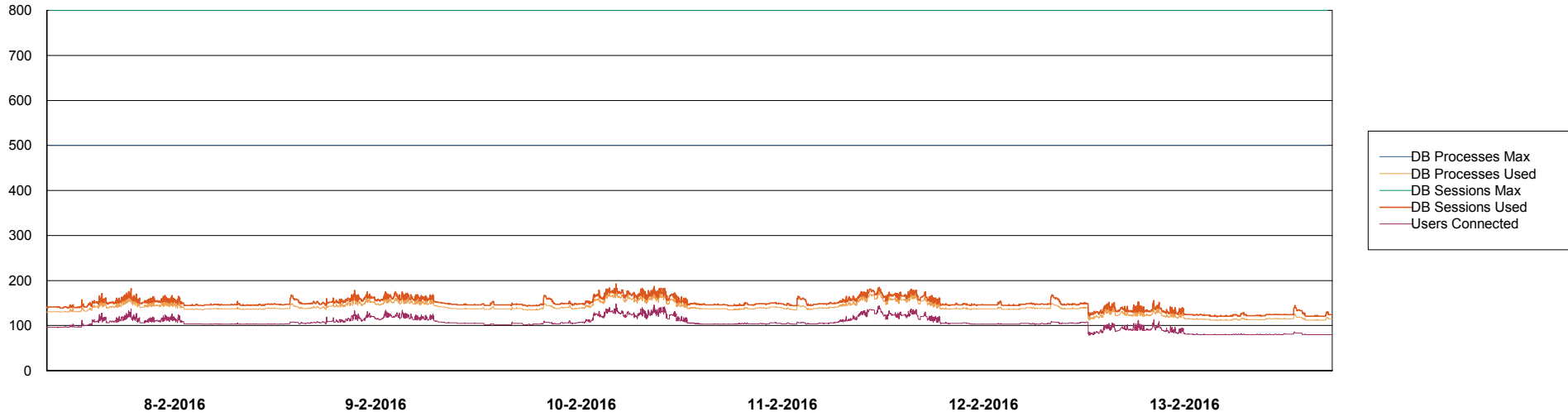
	Total disk space on C (GB)	Free disk space on C (GB)	Total disk space on E (GB)	Free disk space on E (GB)	Total disk space on F (GB)	Free disk space on F (GB)	Total disk space on G (GB)	Free disk space on G (GB)
13-2-2016	279	112	558	465	558	457	279	39
12-2-2016	279	112	558	465	558	457	279	40
11-2-2016	279	112	558	465	558	457	279	42
10-2-2016	279	112	558	465	558	457	279	44
9-2-2016	279	112	558	465	558	457	279	46
8-2-2016	279	112	558	465	558	457	279	48
7-2-2016	279	112	558	465	558	457	279	49

Weekly SLA Customer Report

Customer NIX_Production
Database ID 51



DATABASE PERFORMANCE NIXDB_Production

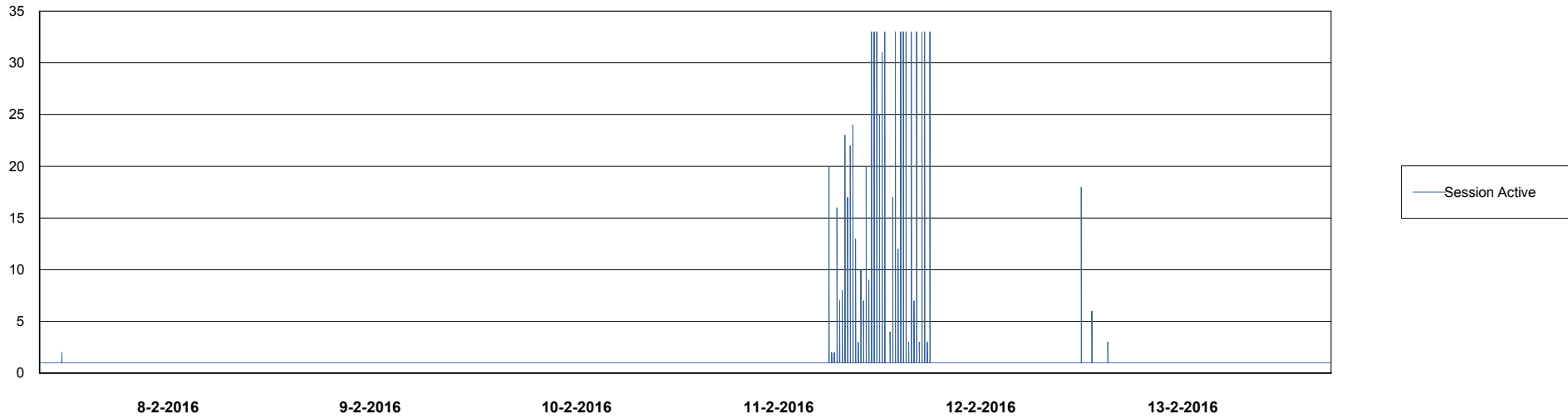
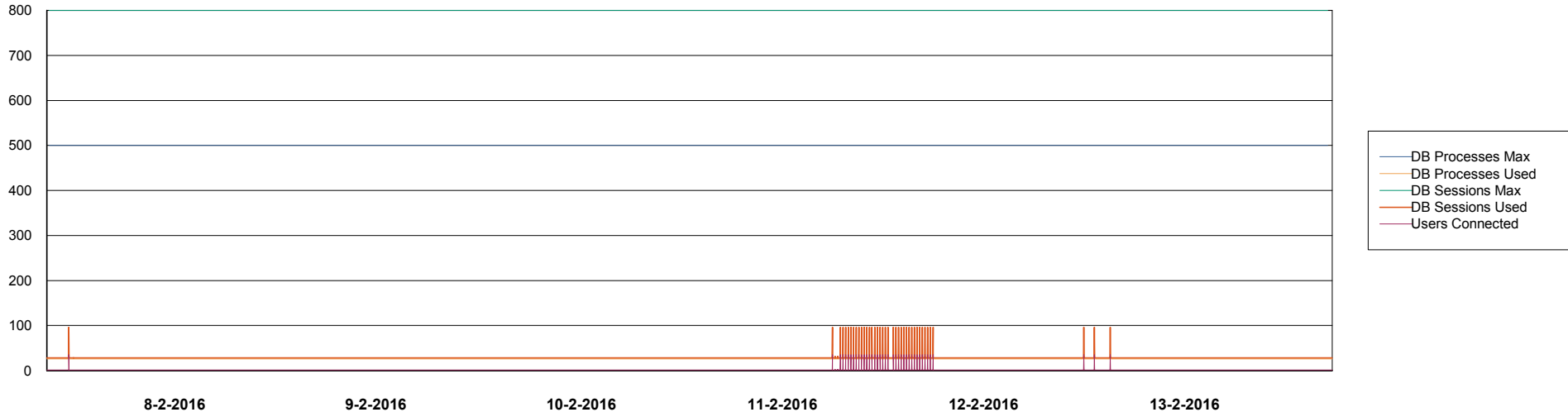


Weekly SLA Customer Report

Customer NIX_Production
Database ID 51



=====
DATABASE PERFORMANCE NIXDB_Standby
=====



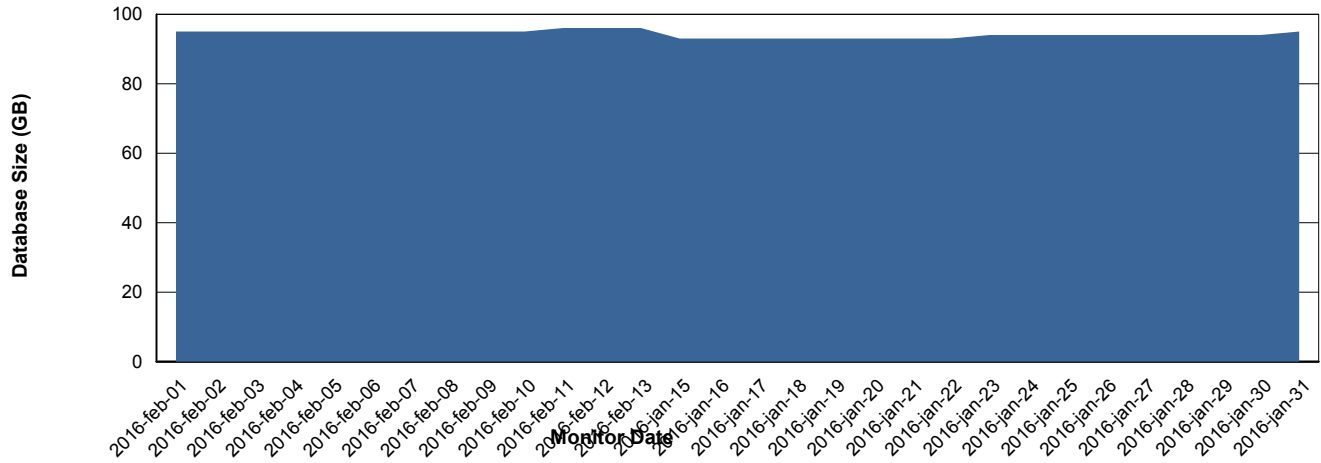
Weekly SLA Customer Report

Customer NIX_Production
 Database ID 51



=====
 DATABASE SIZE NIXDB_Production
 =====

Database growth over last month



=====
 DATABASE TABLESPACES NIXDB_Production
 =====

TOTAL DATABASE SIZE PER TABLESPACE

Date	Tablespace Name	Filesize (Gb)	Usedsize (Gb)	Percentage free
13-2-2016	ABSDATA	50	37	26
	INDX	100	57	43
12-2-2016	ABSDATA	50	37	26
	INDX	100	57	43
11-2-2016	ABSDATA	50	37	26
	INDX	100	57	43
10-2-2016	ABSDATA	50	37	26
	INDX	100	57	43
9-2-2016	ABSDATA	50	37	26
	INDX	100	57	43
8-2-2016	ABSDATA	50	37	26
	INDX	100	57	43
7-2-2016	ABSDATA	50	37	26
	INDX	100	57	43

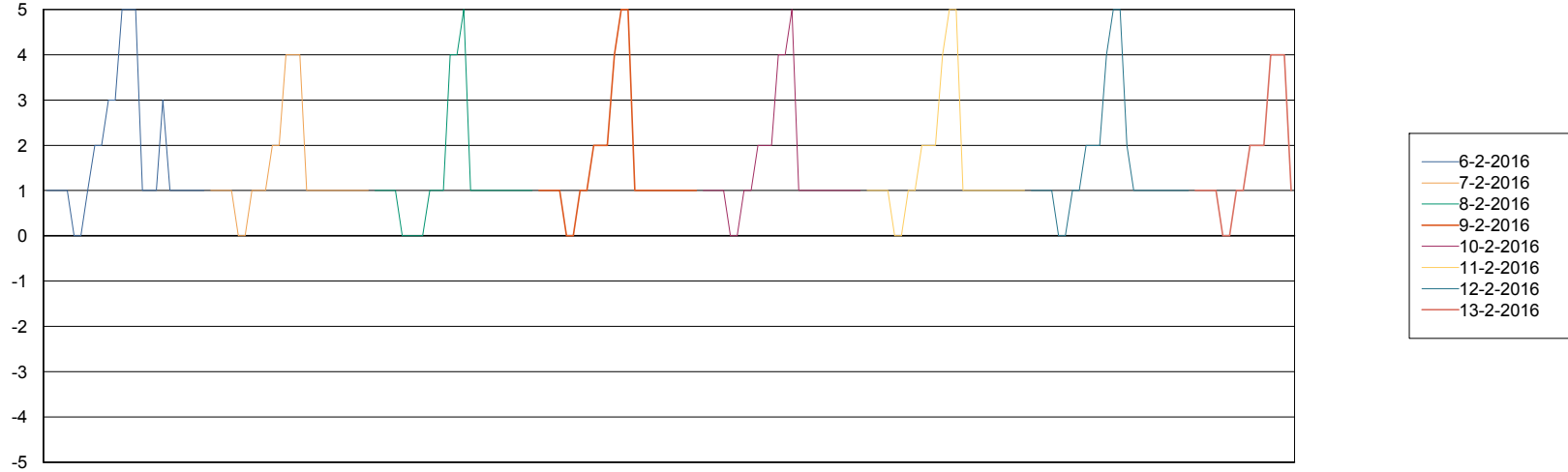
Weekly SLA Customer Report

Customer NIX_Production
Database ID 51



=====
STANDBY DATABASE HEALTH NIX_Production
=====

Recovery lag for last 7 days



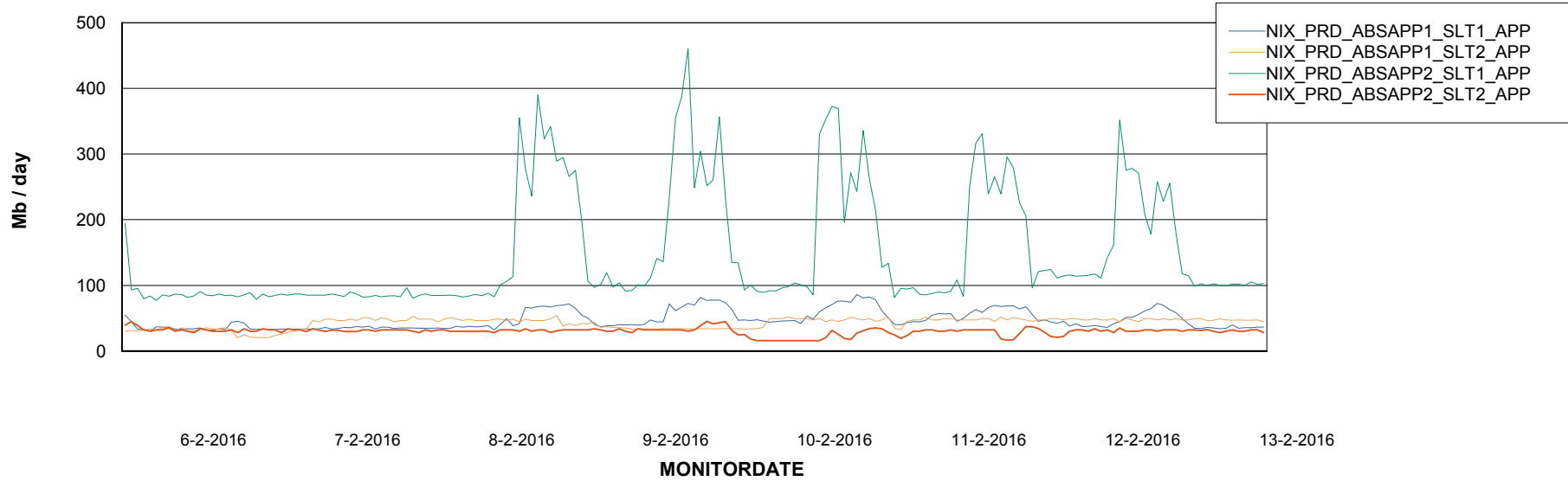
Weekly SLA Customer Report

Customer NIX_Production
Database ID 51



=====
ABSolute Application Server Services
=====

Avg memory used per ABS Server Service



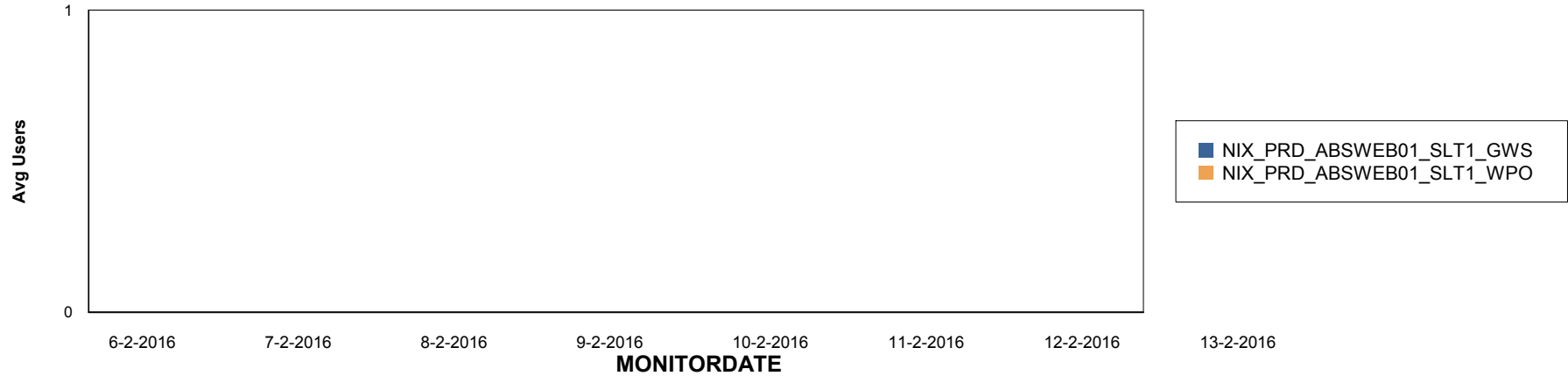
Weekly SLA Customer Report

Customer NIX_Production
Database ID 51

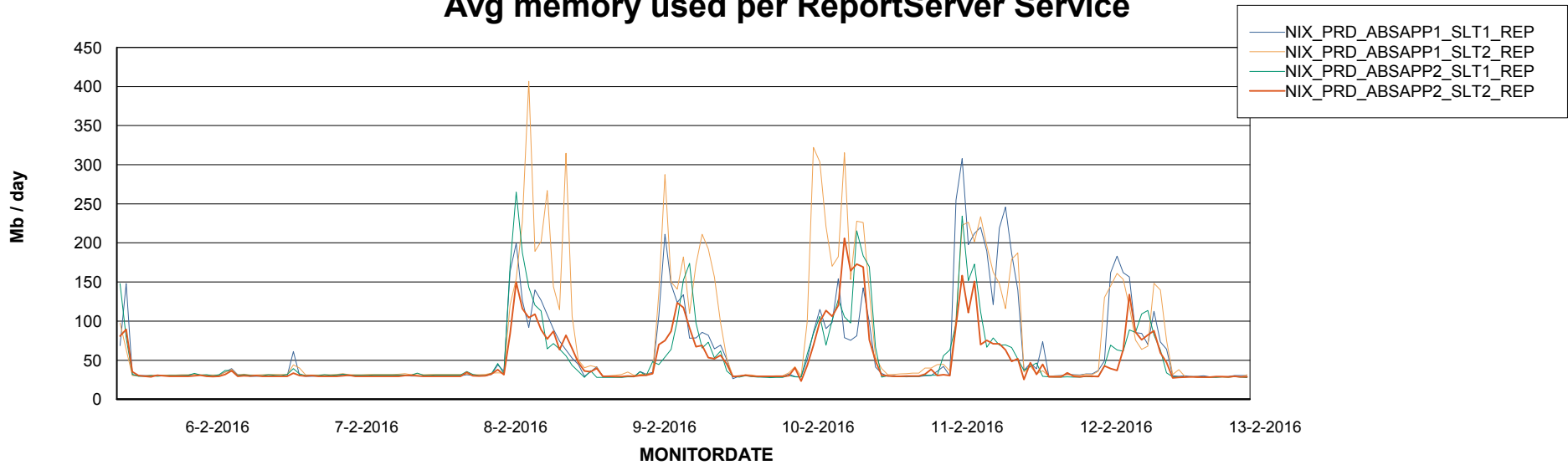


=====
ABSolute Application ReportServer Services
=====

Disaster per ReportServer



Avg memory used per ReportServer Service



Weekly SLA Customer Report

Customer NIX_Production
Database ID 51



Disaster per ABS component

