

Weekly SLA Customer Report

Customer NIX_Production
 Database ID 51



=====
 HARDDISK USAGE NIX_PRD_ABSAPP2
 =====

	Total disk space on C (GB)	Free disk space on C (GB)
30-1-2016	200	158
29-1-2016	200	158
28-1-2016	200	158
27-1-2016	200	158
26-1-2016	200	158
25-1-2016	200	158
24-1-2016	200	158

=====
 HARDDISK USAGE NIX_PRD_ABSWEB01
 =====

	Total disk space on C (GB)	Free disk space on C (GB)
30-1-2016	300	281
29-1-2016	300	281
28-1-2016	300	281
27-1-2016	300	281
26-1-2016	300	281
25-1-2016	300	281
24-1-2016	300	281

Weekly SLA Customer Report

Customer NIX_Production
 Database ID 51



=====
 HARDDISK USAGE NIX_PRD_ORACLE_B11
 =====

	Total disk space on C (GB)	Free disk space on C (GB)	Total disk space on E (GB)	Free disk space on E (GB)	Total disk space on F (GB)	Free disk space on F (GB)	Total disk space on G (GB)	Free disk space on G (GB)
30-1-2016	279	99	558	330	279	179	558	249
29-1-2016	279	99	558	331	279	179	558	253
28-1-2016	279	99	558	331	279	179	558	258
27-1-2016	279	99	558	332	279	179	558	263
26-1-2016	279	99	558	333	279	179	558	268
25-1-2016	279	99	558	334	279	179	558	272
24-1-2016	279	99	558	335	279	179	558	277

=====
 HARDDISK USAGE NIX_PRD_ORCDB1
 =====

	Total disk space on C (GB)	Free disk space on C (GB)	Total disk space on E (GB)	Free disk space on E (GB)	Total disk space on F (GB)	Free disk space on F (GB)	Total disk space on G (GB)	Free disk space on G (GB)
30-1-2016	279	146	558	459	558	450	279	64
29-1-2016	279	146	558	459	558	451	279	65
28-1-2016	279	146	558	462	558	454	279	67
27-1-2016	279	146	558	465	558	457	279	69
26-1-2016	279	146	558	465	558	457	279	71
25-1-2016	279	146	558	465	558	457	279	73
24-1-2016	279	146	558	465	558	457	279	74

Weekly SLA Customer Report

Customer NIX_Production
 Database ID 51



=====
 HARDDISK USAGE NIX_PRD_ORCDB2
 =====

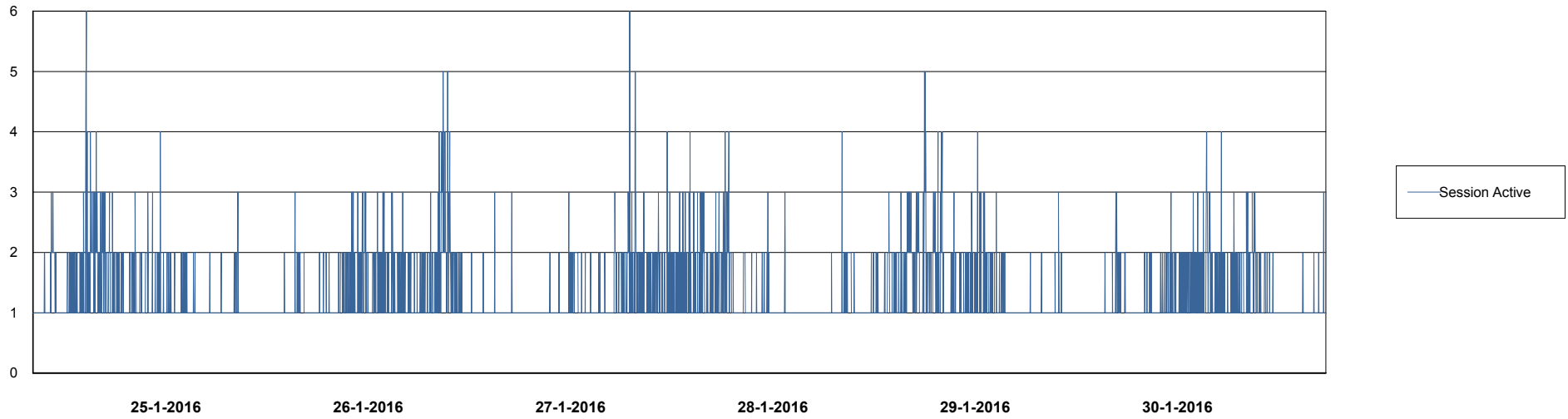
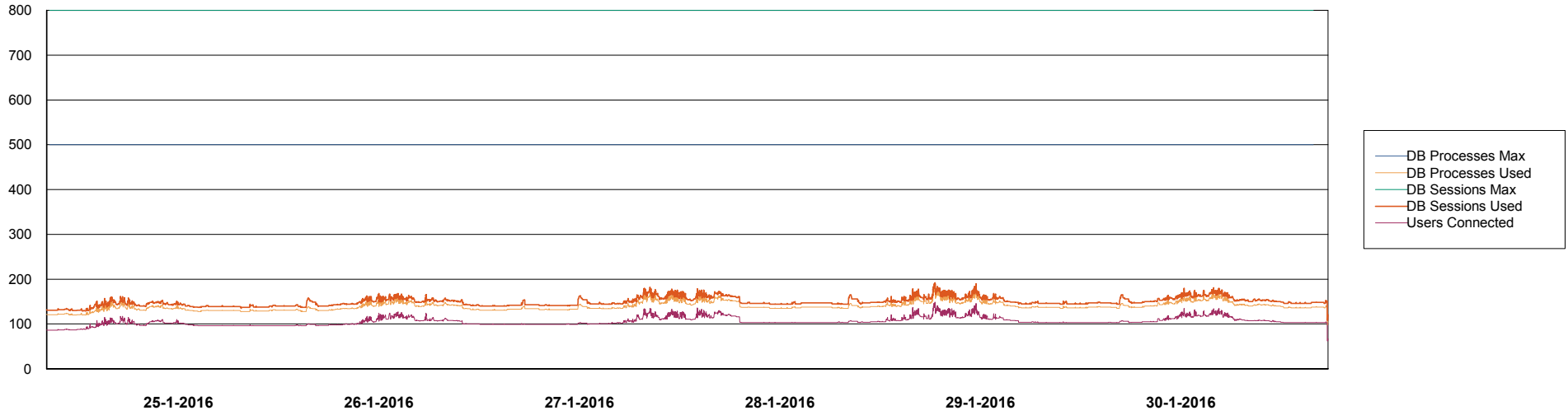
	Total disk space on C (GB)	Free disk space on C (GB)	Total disk space on E (GB)	Free disk space on E (GB)	Total disk space on F (GB)	Free disk space on F (GB)	Total disk space on G (GB)	Free disk space on G (GB)
30-1-2016	279	146	558	459	558	450	279	64
29-1-2016	279	146	558	459	558	451	279	65
28-1-2016	279	146	558	462	558	454	279	67
27-1-2016	279	146	558	465	558	457	279	69
26-1-2016	279	146	558	465	558	457	279	71
25-1-2016	279	146	558	465	558	457	279	73
24-1-2016	279	146	558	465	558	457	279	74

Weekly SLA Customer Report

Customer NIX_Production
Database ID 51



DATABASE PERFORMANCE NIXDB_Production

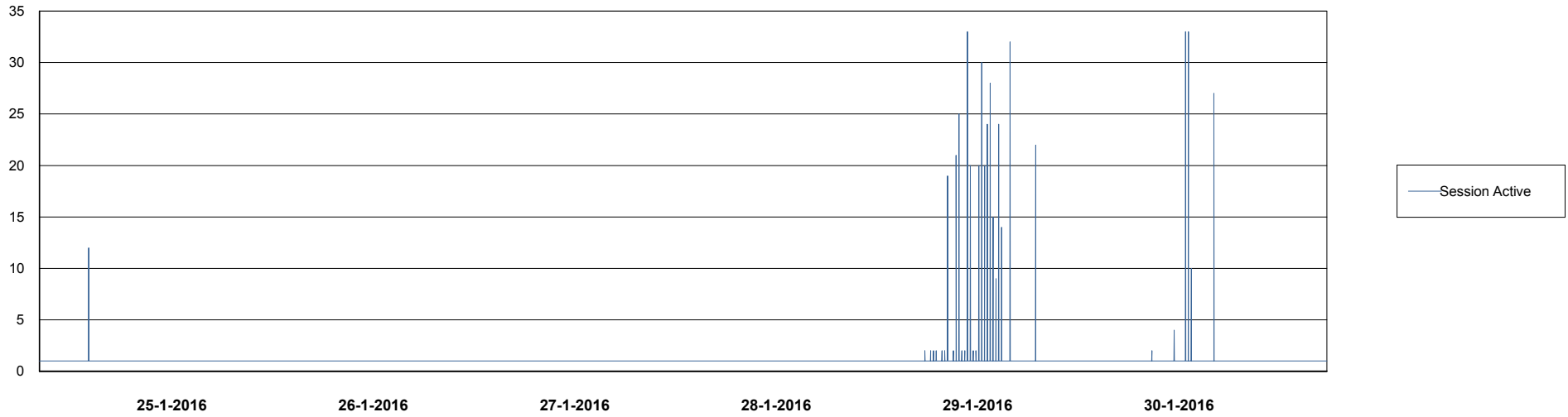
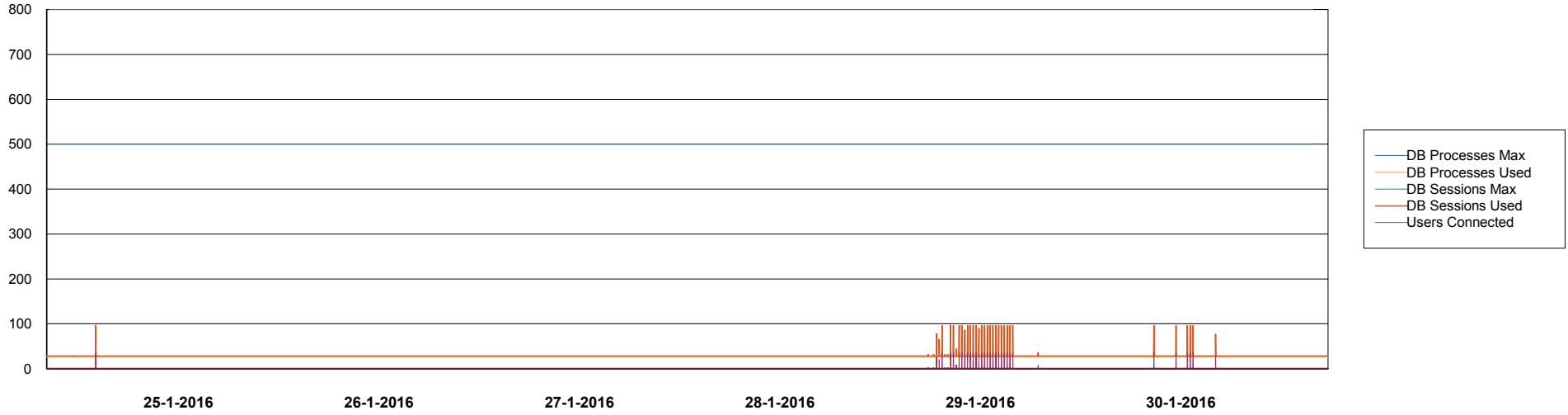


Weekly SLA Customer Report

Customer NIX_Production
Database ID 51



=====
DATABASE PERFORMANCE NIXDB_Standby
=====



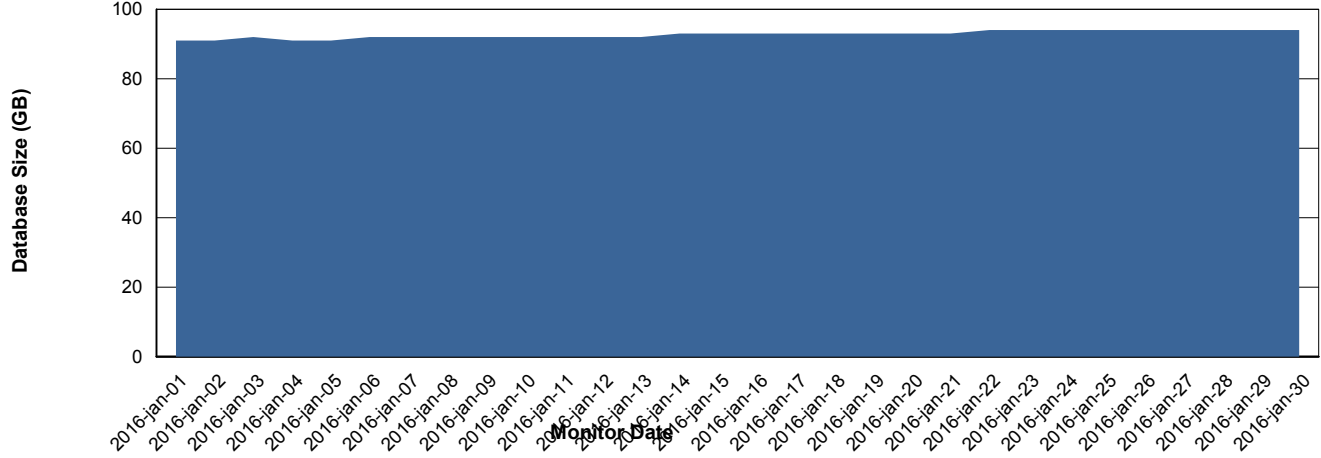
Weekly SLA Customer Report

Customer NIX_Production
 Database ID 51



=====
 DATABASE SIZE NIXDB_Production
 =====

Database growth over last month



=====
 DATABASE TABLESPACES NIXDB_Production
 =====

TOTAL DATABASE SIZE PER TABLESPACE

Date	Tablespace Name	Filesize (Gb)	Usedsize (Gb)	Percentage free
30-1-2016	ABSDATA	50	37	26
	INDX	100	56	44
29-1-2016	ABSDATA	50	37	26
	INDX	100	56	44
28-1-2016	ABSDATA	50	37	26
	INDX	100	56	44
27-1-2016	ABSDATA	50	37	26
	INDX	100	56	44
26-1-2016	ABSDATA	50	37	26
	INDX	100	56	44
25-1-2016	ABSDATA	50	37	26
	INDX	100	56	44
24-1-2016	ABSDATA	50	37	26
	INDX	100	56	44

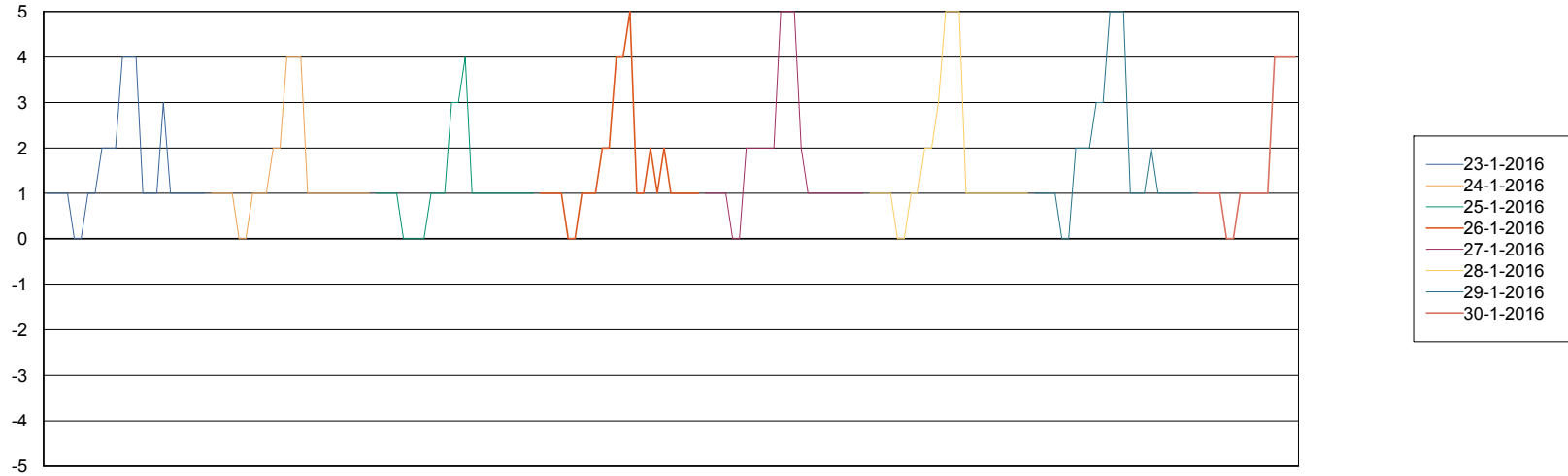
Weekly SLA Customer Report

Customer NIX_Production
Database ID 51



=====
STANDBY DATABASE HEALTH NIX_Production
=====

Recovery lag for last 7 days



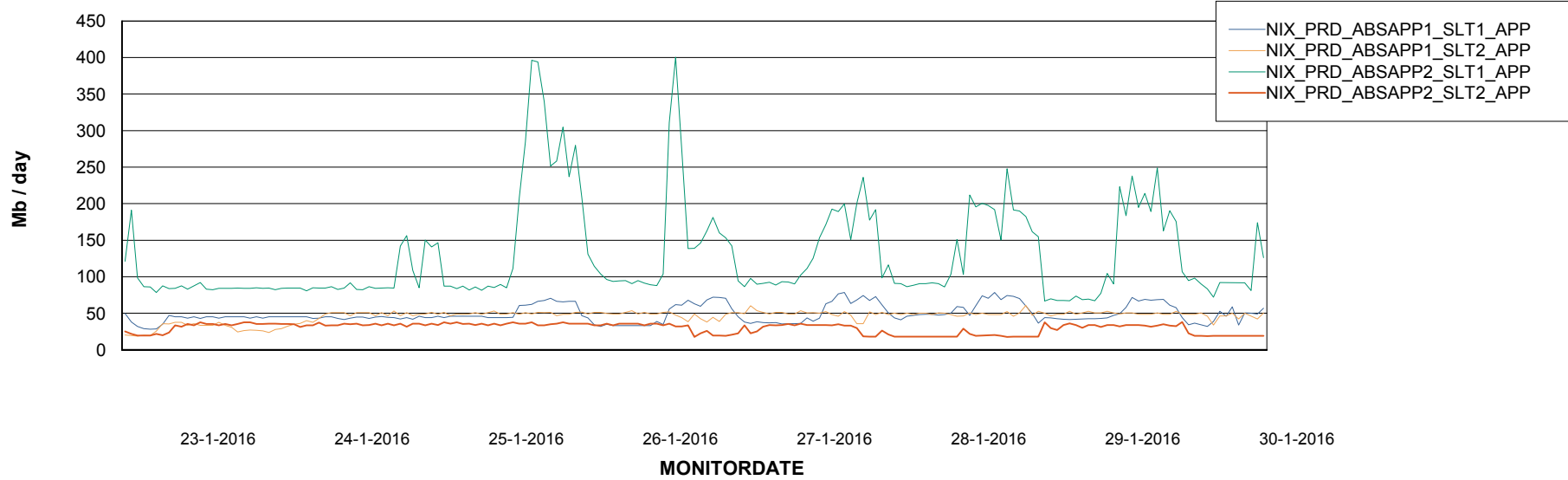
Weekly SLA Customer Report

Customer NIX_Production
Database ID 51



=====
ABSolute Application Server Services
=====

Avg memory used per ABS Server Service



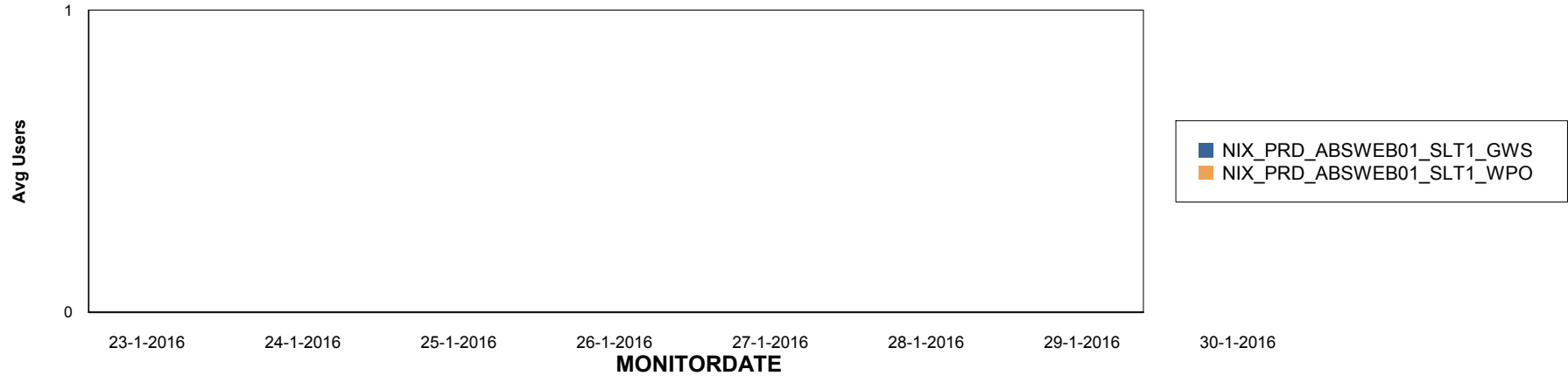
Weekly SLA Customer Report

Customer NIX_Production
Database ID 51

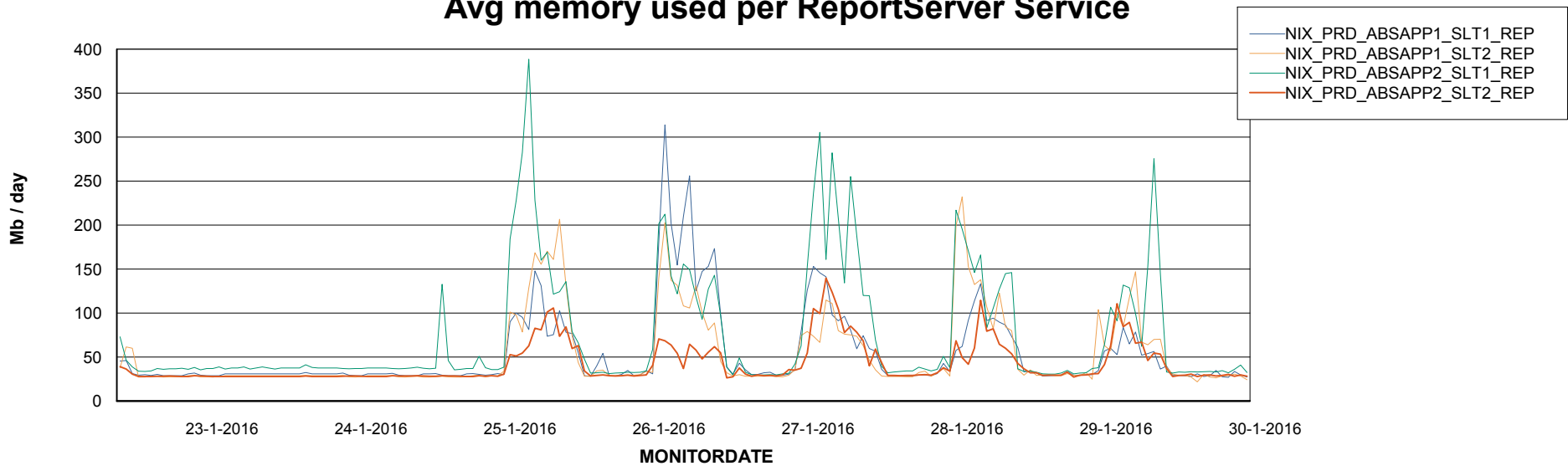


=====
ABSolute Application ReportServer Services
=====

Disaster per ReportServer



Avg memory used per ReportServer Service



Weekly SLA Customer Report

Customer NIX_Production
Database ID 51



Disaster per ABS component

