

## Weekly SLA Customer Report

Customer      JWR Production  
 Database ID    43



=====  
 HARDDISK USAGE    JWR\_PRD\_JWR-ABS-01  
 =====

	Used disk space on / (GB)	Total disk space on / (GB)	Free disk space on / (GB)
30-1-2016	31	49	16
29-1-2016	31	49	16
28-1-2016	31	49	16
27-1-2016	31	49	16
26-1-2016	32	49	15
25-1-2016	33	49	14
24-1-2016	33	49	13

=====  
 HARDDISK USAGE    JWR\_PRD\_JWR-ABS-02  
 =====

	Used disk space on / (GB)	Total disk space on / (GB)	Free disk space on / (GB)
30-1-2016	36	49	10
29-1-2016	36	49	10
28-1-2016	36	49	11
27-1-2016	36	49	11
26-1-2016	36	49	11
25-1-2016	36	49	11
24-1-2016	36	49	11

## Weekly SLA Customer Report

Customer      JWR Production  
 Database ID    43



=====

HARDDISK USAGE    JWR\_PRD\_JWR-ODB-01

=====

	Used disk space on / (GB)	Total disk space on / (GB)	Free disk space on / (GB)
30-1-2016	105	148	36
29-1-2016	105	148	36
28-1-2016	105	148	36
27-1-2016	105	148	36
26-1-2016	105	148	36
25-1-2016	105	148	36
24-1-2016	104	148	37

=====

HARDDISK USAGE    JWR\_PRD\_JWR-ODB-02

=====

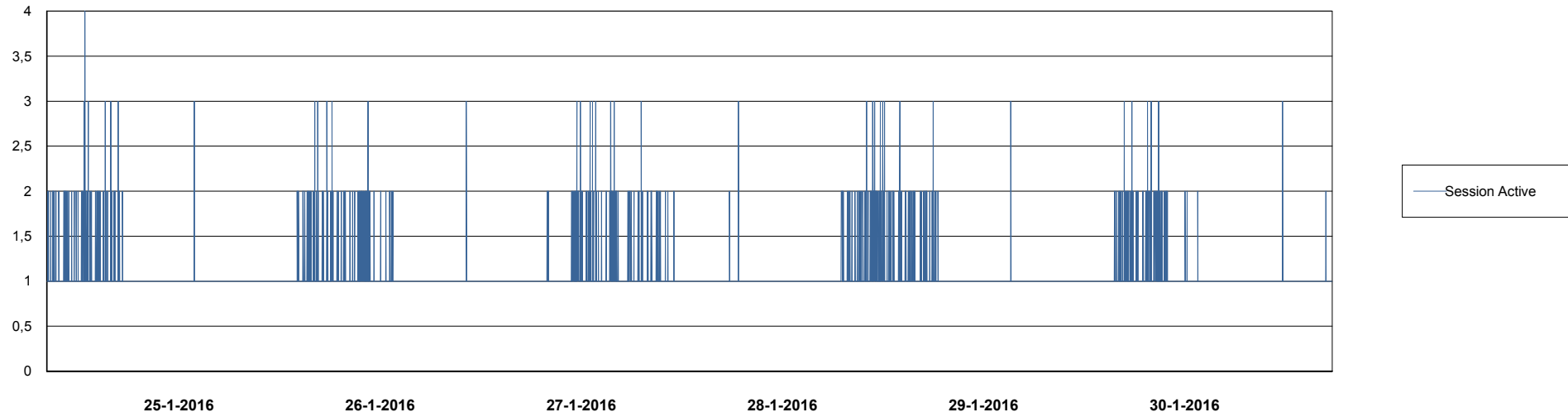
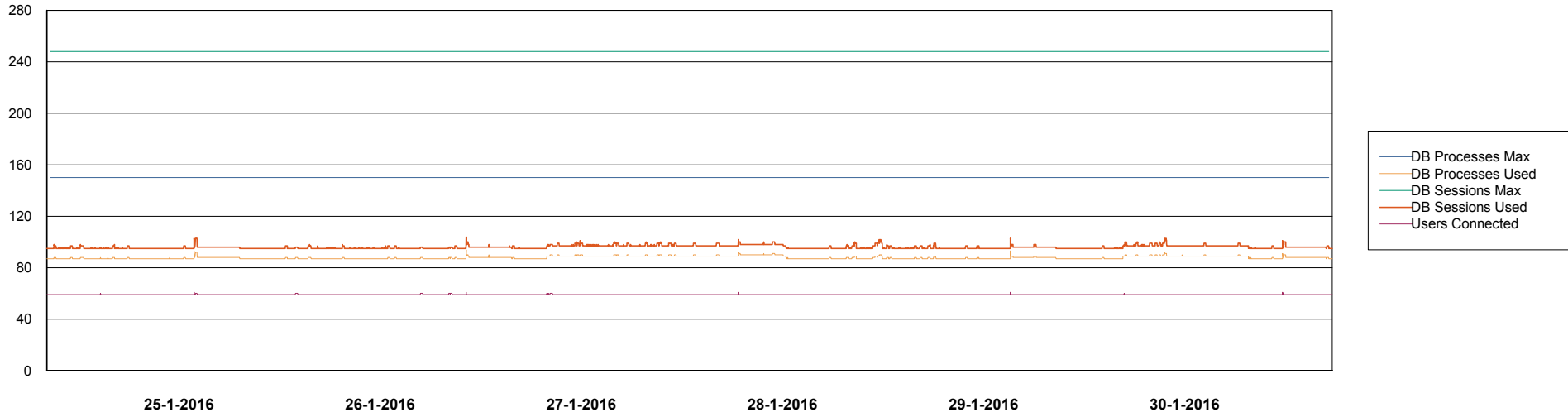
	Used disk space on / (GB)	Total disk space on / (GB)	Free disk space on / (GB)
30-1-2016	96	138	35
29-1-2016	96	138	35
28-1-2016	96	138	35
27-1-2016	96	138	35
26-1-2016	96	138	35
25-1-2016	96	138	35
24-1-2016	96	138	35

# Weekly SLA Customer Report

Customer JWR Production  
Database ID 43



## DATABASE PERFORMANCE JWRDB\_Production



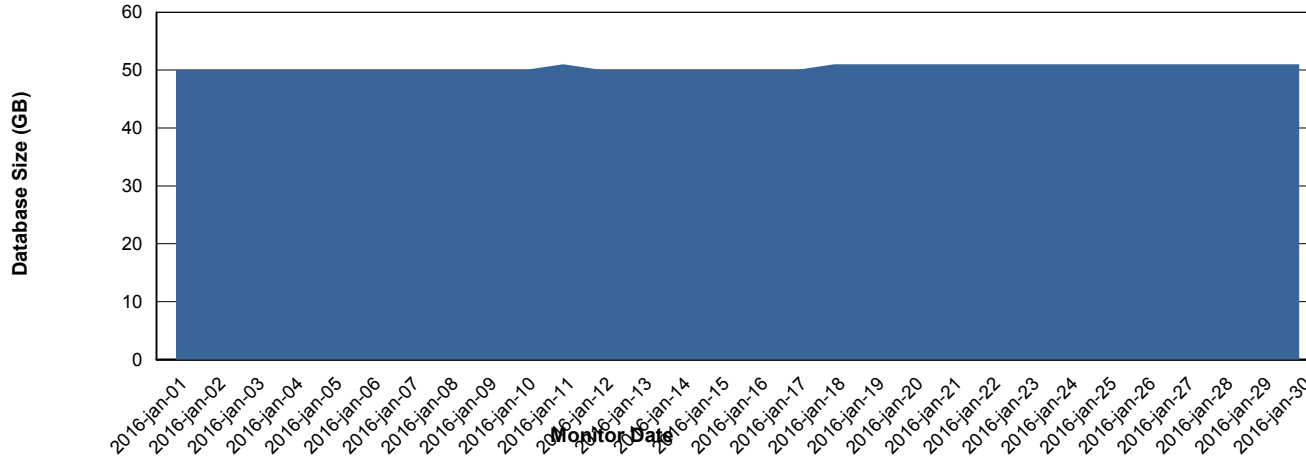
# Weekly SLA Customer Report

Customer JWR Production  
 Database ID 43



=====  
 DATABASE SIZE JWRDB\_Production  
 =====

## Database growth over last month



=====  
 DATABASE TABLESPACES JWRDB\_Production  
 =====

### TOTAL DATABASE SIZE PER TABLESPACE

Date	Tablespace Name	Filesize (Gb)	Usedsize (Gb)	Percentage free
30-1-2016	ABSDATA	18	14	22
	INDX	46	36	22
29-1-2016	ABSDATA	18	14	22
	INDX	46	36	22
28-1-2016	ABSDATA	18	14	22
	INDX	46	36	22
27-1-2016	ABSDATA	18	14	22
	INDX	46	36	22
26-1-2016	ABSDATA	18	14	22
	INDX	46	36	22
25-1-2016	ABSDATA	18	14	22
	INDX	46	36	22
24-1-2016	ABSDATA	18	14	22
	INDX	46	36	22

# Weekly SLA Customer Report

---

Customer     JWR Production  
Database ID   43



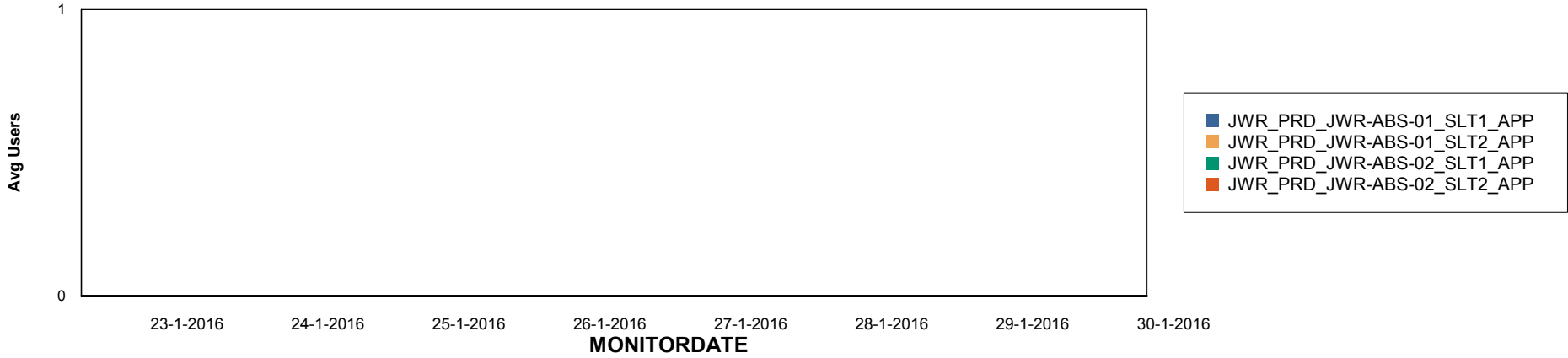
# Weekly SLA Customer Report

Customer JWR Production  
Database ID 43

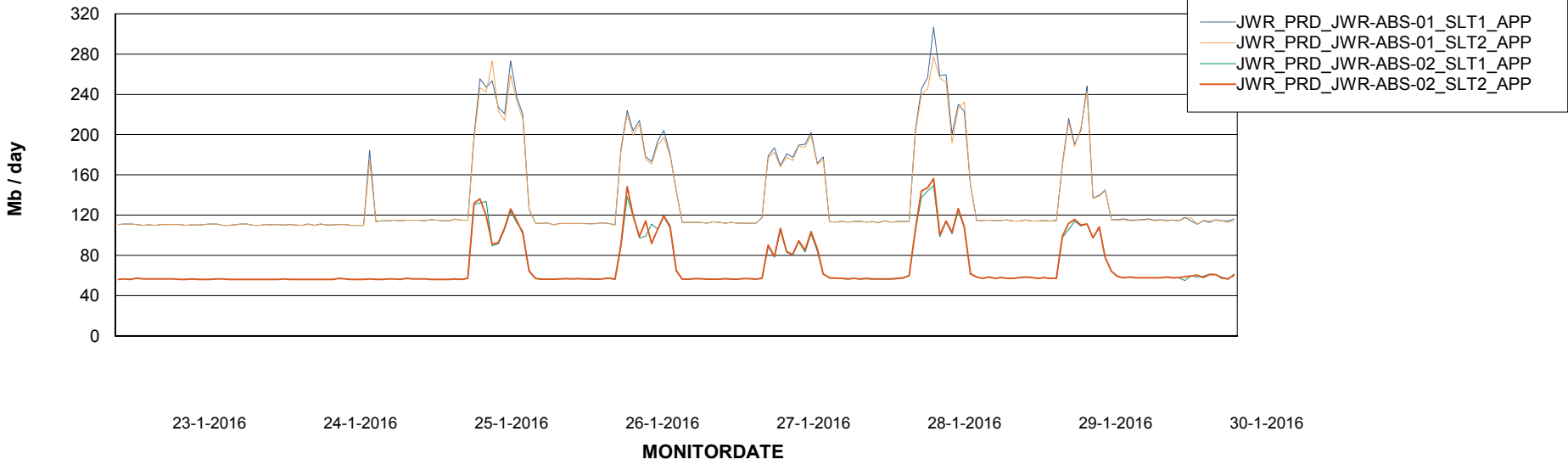


=====  
ABSolute Application Server Services  
=====

## Disaster per ABS Server



## Avg memory used per ABS Server Service



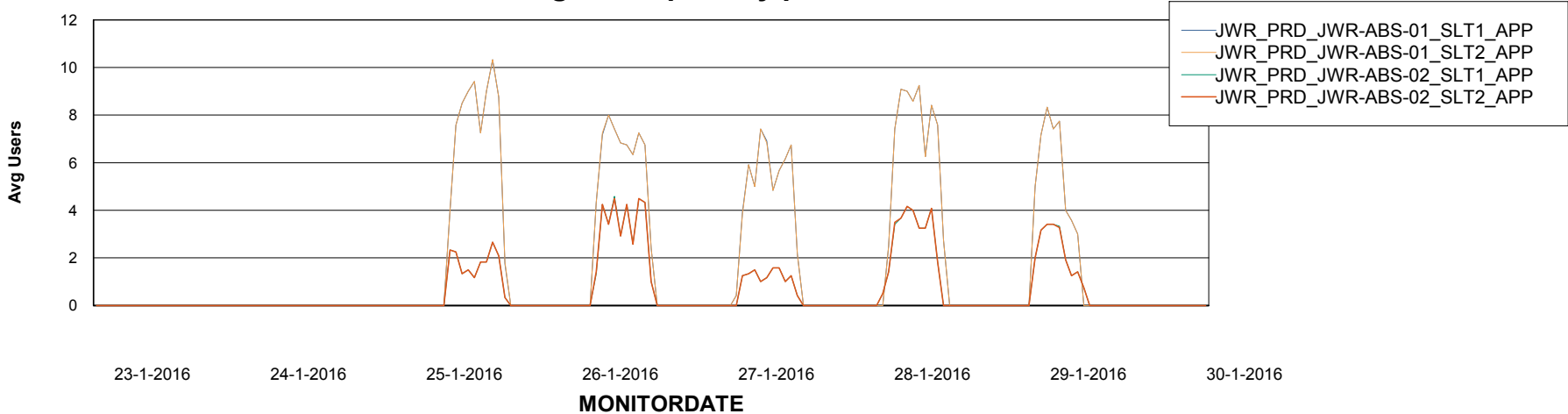
# Weekly SLA Customer Report

Customer JWR Production  
Database ID 43



=====  
ABSolute Application Server Services  
=====

### Avg users per day per ABS server



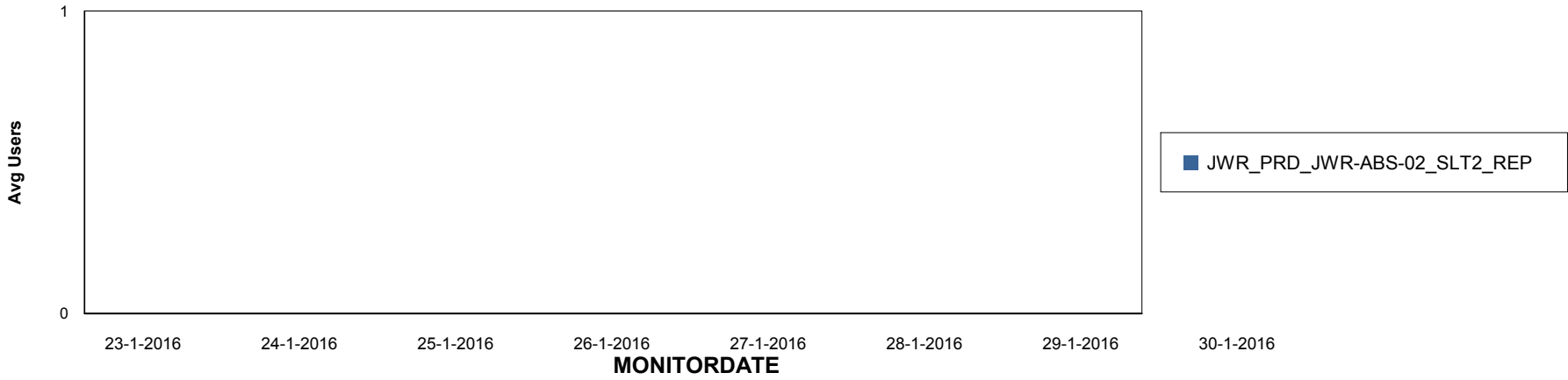
# Weekly SLA Customer Report

Customer JWR Production  
Database ID 43

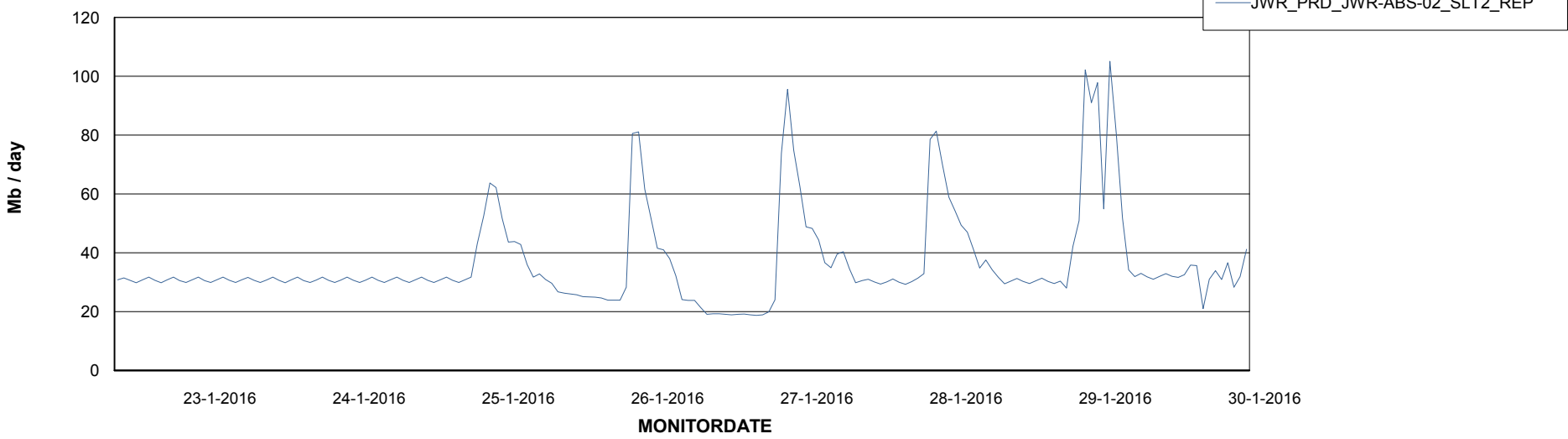


=====  
ABSolute Application ReportServer Services  
=====

## Disaster per ReportServer



## Avg memory used per ReportServer Service



# Weekly SLA Customer Report

Customer JWR Production  
Database ID 43



## Disaster per ABS component

