

Weekly SLA Customer Report

Customer NIX_Production
 Database ID 51



=====
 HARDDISK USAGE NIX_PRD_ABSAPP2
 =====

	Total disk space on C (GB)	Free disk space on C (GB)
23-1-2016	200	158
22-1-2016	200	158
21-1-2016	200	158
20-1-2016	200	158
19-1-2016	200	158
18-1-2016	200	158
17-1-2016	200	158

=====
 HARDDISK USAGE NIX_PRD_ABSWEB01
 =====

	Total disk space on C (GB)	Free disk space on C (GB)
23-1-2016	300	281
22-1-2016	300	281
21-1-2016	300	281
20-1-2016	300	281
19-1-2016	300	281
18-1-2016	300	281
17-1-2016	300	281

Weekly SLA Customer Report

Customer NIX_Production
 Database ID 51



=====
 HARDDISK USAGE NIX_PRD_ORACLE_B11
 =====

	Total disk space on C (GB)	Free disk space on C (GB)	Total disk space on E (GB)	Free disk space on E (GB)	Total disk space on F (GB)	Free disk space on F (GB)	Total disk space on G (GB)	Free disk space on G (GB)
23-1-2016	279	99	558	336	279	179	558	284
22-1-2016	279	99	558	337	279	179	558	288
21-1-2016	279	99	558	338	279	179	558	293
20-1-2016	279	99	558	339	279	179	558	298
19-1-2016	279	99	558	339	279	179	558	303
18-1-2016	279	99	558	340	279	179	558	308
17-1-2016	279	99	558	341	279	179	558	312

=====
 HARDDISK USAGE NIX_PRD_ORCDB1
 =====

	Total disk space on C (GB)	Free disk space on C (GB)	Total disk space on E (GB)	Free disk space on E (GB)	Total disk space on F (GB)	Free disk space on F (GB)	Total disk space on G (GB)	Free disk space on G (GB)
23-1-2016	279	146	558	465	558	457	279	76
22-1-2016	279	146	558	465	558	457	279	77
21-1-2016	279	146	558	465	558	457	279	79
20-1-2016	279	147	558	465	558	457	279	81
19-1-2016	279	147	558	465	558	457	279	83
18-1-2016	279	147	558	465	558	457	279	85
17-1-2016	279	147	558	465	558	457	279	86

Weekly SLA Customer Report

Customer NIX_Production
 Database ID 51



=====
 HARDDISK USAGE NIX_PRD_ORCDB2
 =====

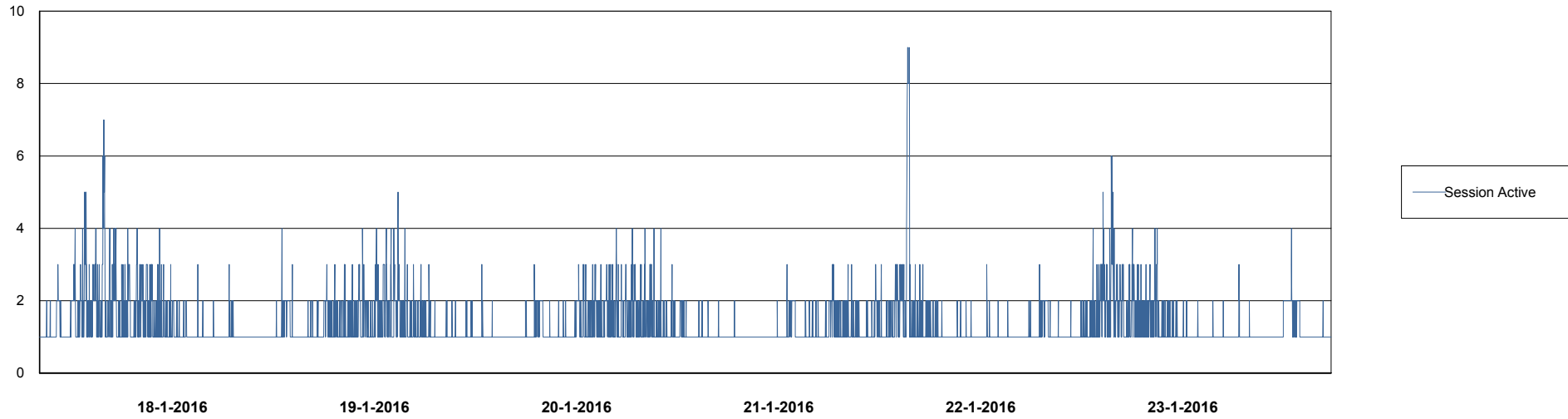
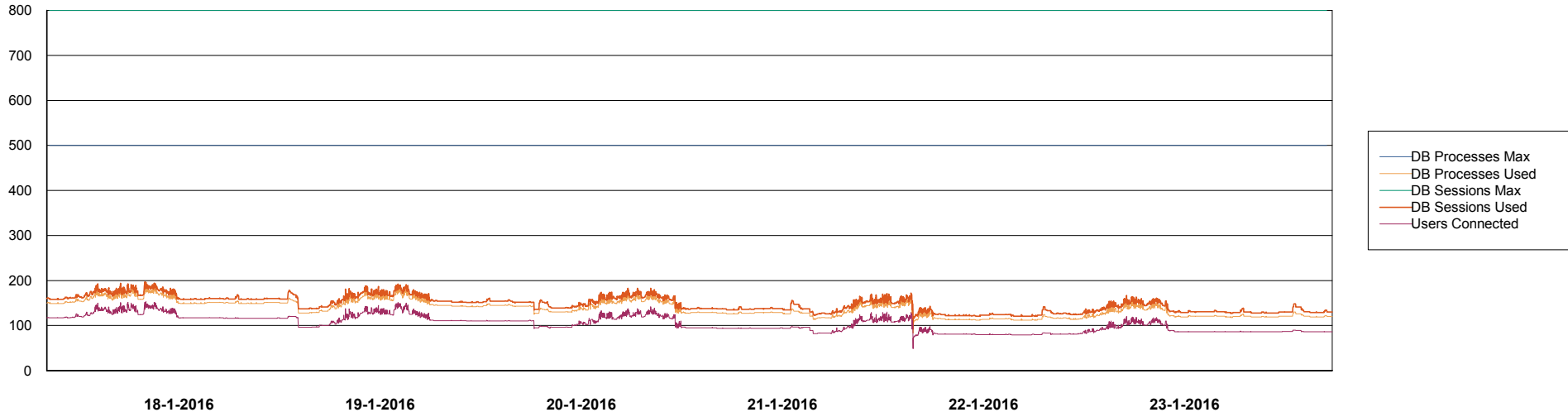
	Total disk space on C (GB)	Free disk space on C (GB)	Total disk space on E (GB)	Free disk space on E (GB)	Total disk space on F (GB)	Free disk space on F (GB)	Total disk space on G (GB)	Free disk space on G (GB)
23-1-2016	279	146	558	465	558	457	279	76
22-1-2016	279	146	558	465	558	457	279	77
21-1-2016	279	146	558	465	558	457	279	79
20-1-2016	279	147	558	465	558	457	279	81
19-1-2016	279	147	558	465	558	457	279	83
18-1-2016	279	147	558	465	558	457	279	85
17-1-2016	279	147	558	465	558	457	279	86

Weekly SLA Customer Report

Customer NIX_Production
Database ID 51



DATABASE PERFORMANCE NIXDB_Production

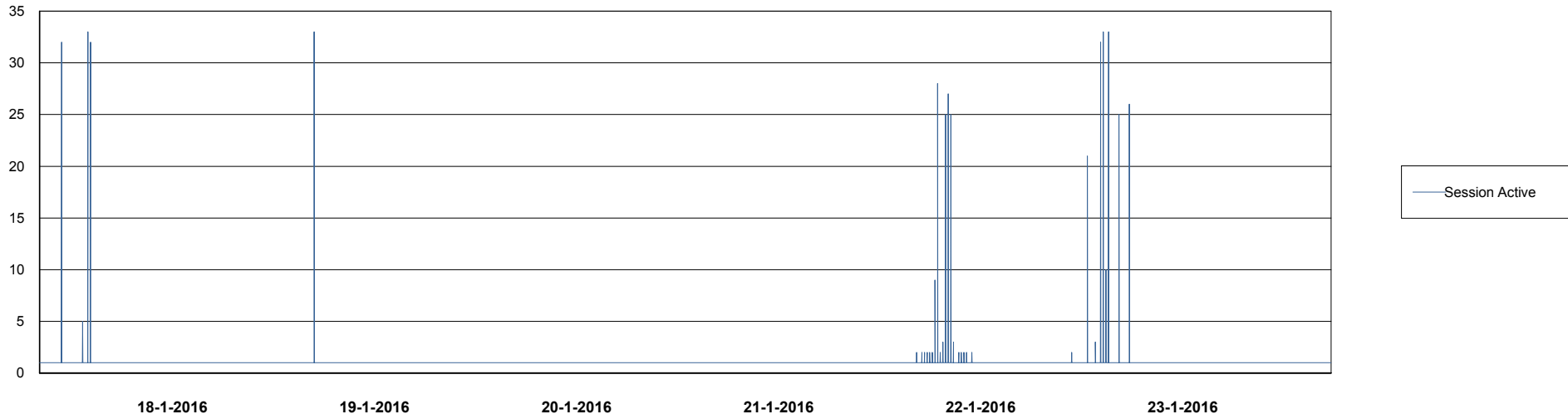
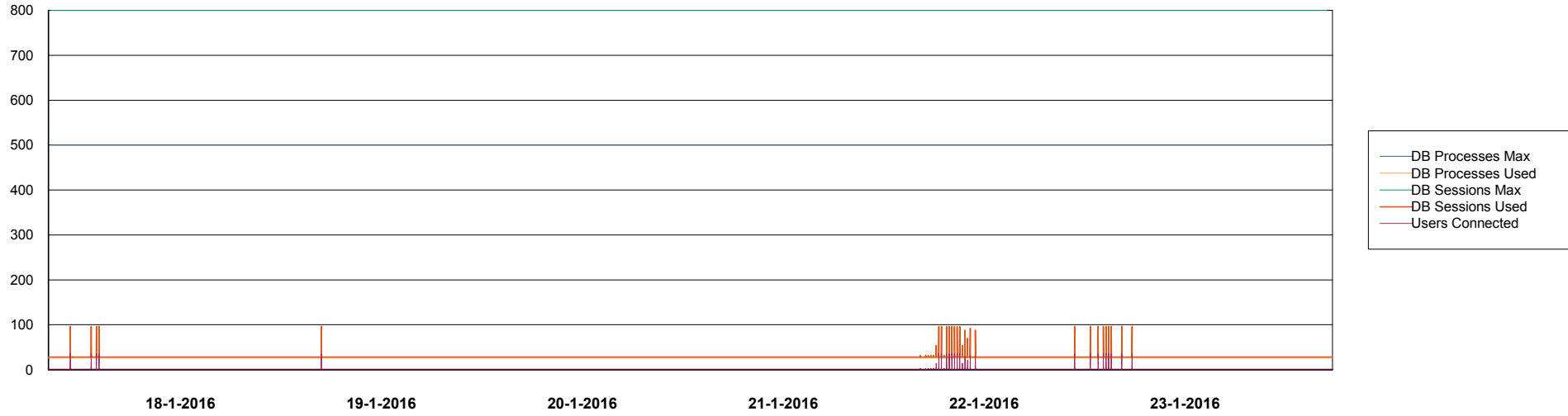


Weekly SLA Customer Report

Customer NIX_Production
Database ID 51



DATABASE PERFORMANCE NIXDB_Standby



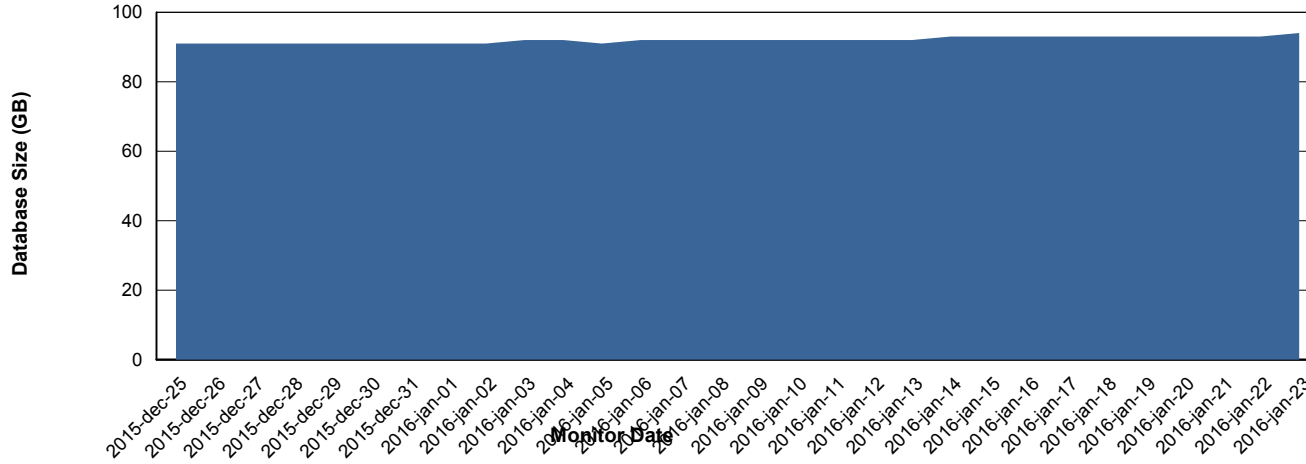
Weekly SLA Customer Report

Customer NIX_Production
 Database ID 51



=====
 DATABASE SIZE NIXDB_Production
 =====

Database growth over last month



=====
 DATABASE TABLESPACES NIXDB_Production
 =====

TOTAL DATABASE SIZE PER TABLESPACE

Date	Tablespace Name	Filesize (Gb)	Usedsize (Gb)	Percentage free
23-1-2016	ABSDATA	50	37	26
	INDX	100	56	44
22-1-2016	ABSDATA	50	37	26
	INDX	100	56	44
21-1-2016	ABSDATA	50	37	26
	INDX	100	56	44
20-1-2016	ABSDATA	50	37	26
	INDX	100	55	45
19-1-2016	ABSDATA	50	37	26
	INDX	100	55	45
18-1-2016	ABSDATA	50	37	26
	INDX	100	55	45
17-1-2016	ABSDATA	50	37	26
	INDX	100	55	45

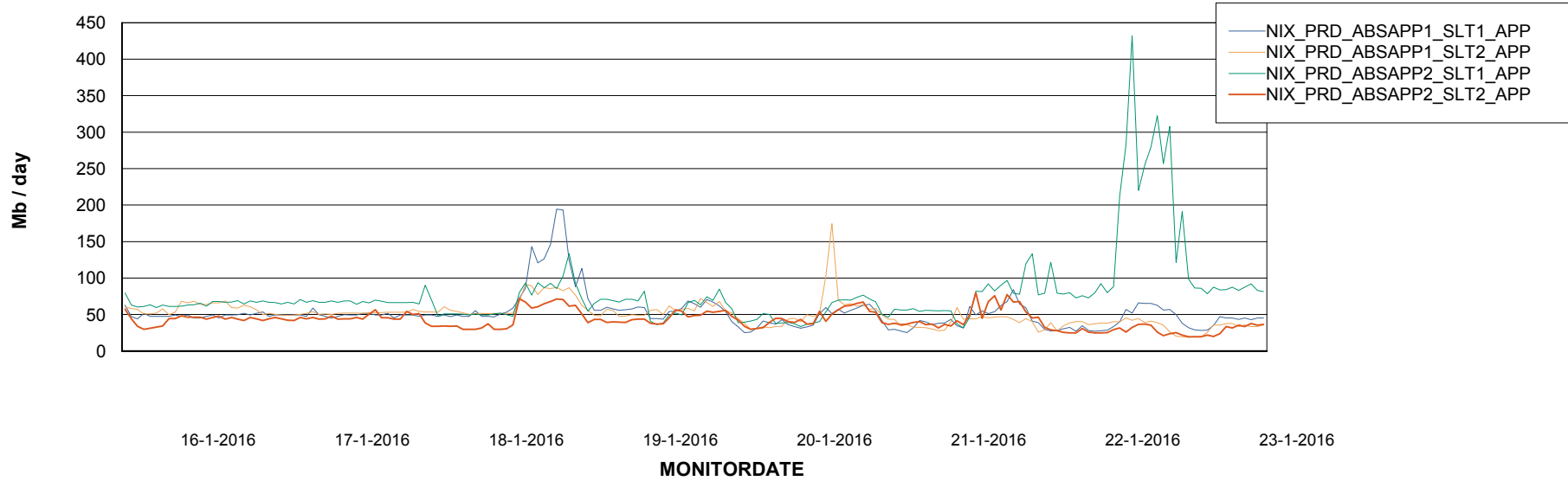
Weekly SLA Customer Report

Customer NIX_Production
Database ID 51



=====
ABSSolute Application Server Services
=====

Avg memory used per ABS Server Service



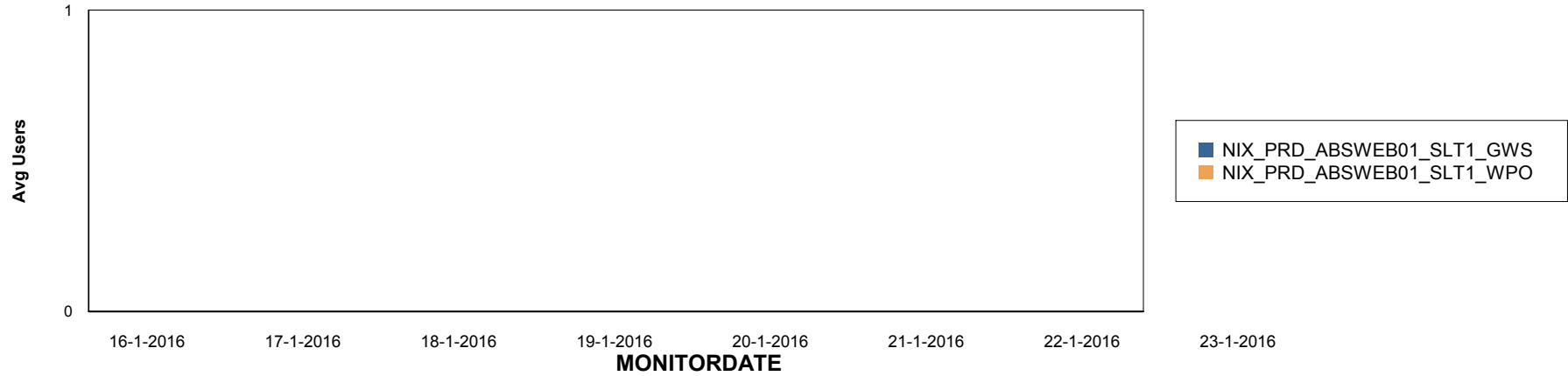
Weekly SLA Customer Report

Customer NIX_Production
Database ID 51

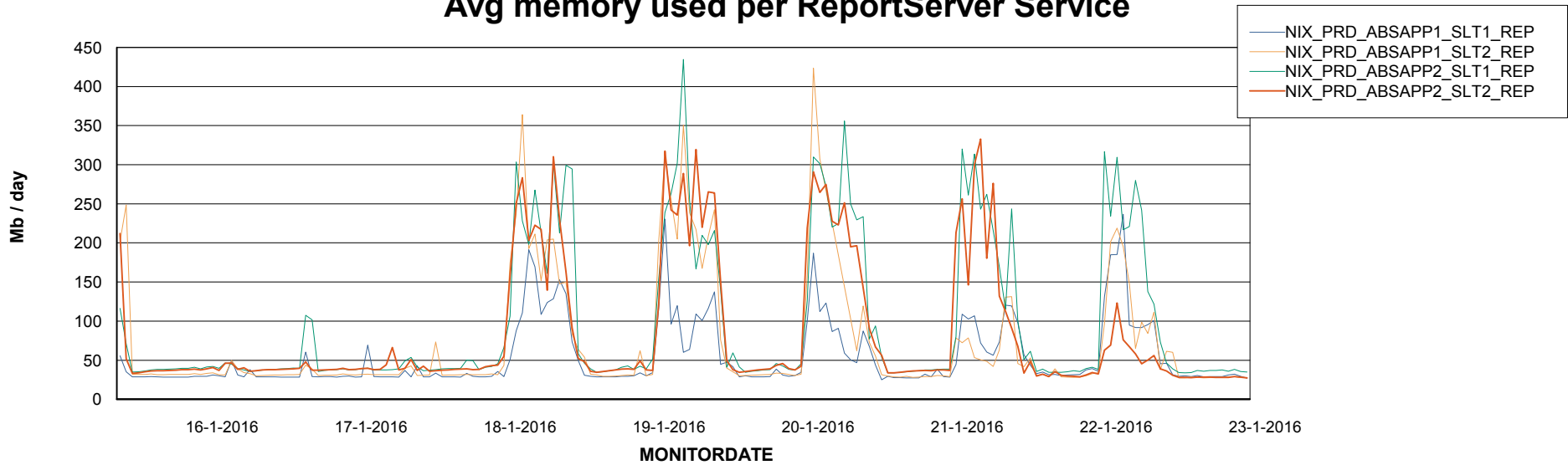


=====
ABSolute Application ReportServer Services
=====

Disaster per ReportServer



Avg memory used per ReportServer Service



Weekly SLA Customer Report

Customer NIX_Production
Database ID 51



Disaster per ABS component

