

Weekly SLA Customer Report

Customer NIX_Production
Database ID 51



=====
HARDDISK USAGE NIX_PRD_ABSAPP2
=====

	Total disk space on C (GB)	Free disk space on C (GB)
16-1-2016	200	158
15-1-2016	200	158
14-1-2016	200	159
13-1-2016	200	159
12-1-2016	200	159
11-1-2016	200	159
10-1-2016	200	159

=====
HARDDISK USAGE NIX_PRD_ABSWEB01
=====

	Total disk space on C (GB)	Free disk space on C (GB)
16-1-2016	300	281
15-1-2016	300	281
14-1-2016	300	281
13-1-2016	300	281
12-1-2016	300	281
11-1-2016	300	281
10-1-2016	300	281

Weekly SLA Customer Report

Customer NIX_Production
 Database ID 51



=====
 HARDDISK USAGE NIX_PRD_ORACLE_BI1
 =====

	Total disk space on C (GB)	Free disk space on C (GB)	Total disk space on E (GB)	Free disk space on E (GB)	Total disk space on F (GB)	Free disk space on F (GB)	Total disk space on G (GB)	Free disk space on G (GB)
16-1-2016	279	99	558	342	279	179	558	319
15-1-2016	279	99	558	344	279	179	558	323
14-1-2016	279	99	558	344	279	179	558	327
13-1-2016	279	99	558	345	279	179	558	328
12-1-2016	279	99	558	345	279	179	558	328
11-1-2016	279	99	558	346	279	179	558	331
10-1-2016	279	99	558	347	279	179	558	336

=====
 HARDDISK USAGE NIX_PRD_ORCDB1
 =====

	Total disk space on C (GB)	Free disk space on C (GB)	Total disk space on E (GB)	Free disk space on E (GB)	Total disk space on F (GB)	Free disk space on F (GB)	Total disk space on G (GB)	Free disk space on G (GB)
16-1-2016	279	147	558	465	558	457	279	88
15-1-2016	279	147	558	465	558	457	279	89
14-1-2016	279	148	558	465	558	457	279	91
13-1-2016	279	148	558	465	558	457	279	92
12-1-2016	279	148	558	465	558	457	279	95
11-1-2016	279	148	558	465	558	457	279	97
10-1-2016	279	148	558	465	558	457	279	98

Weekly SLA Customer Report

Customer NIX_Production
 Database ID 51



=====
 HARDDISK USAGE NIX_PRD_ORCDB2
 =====

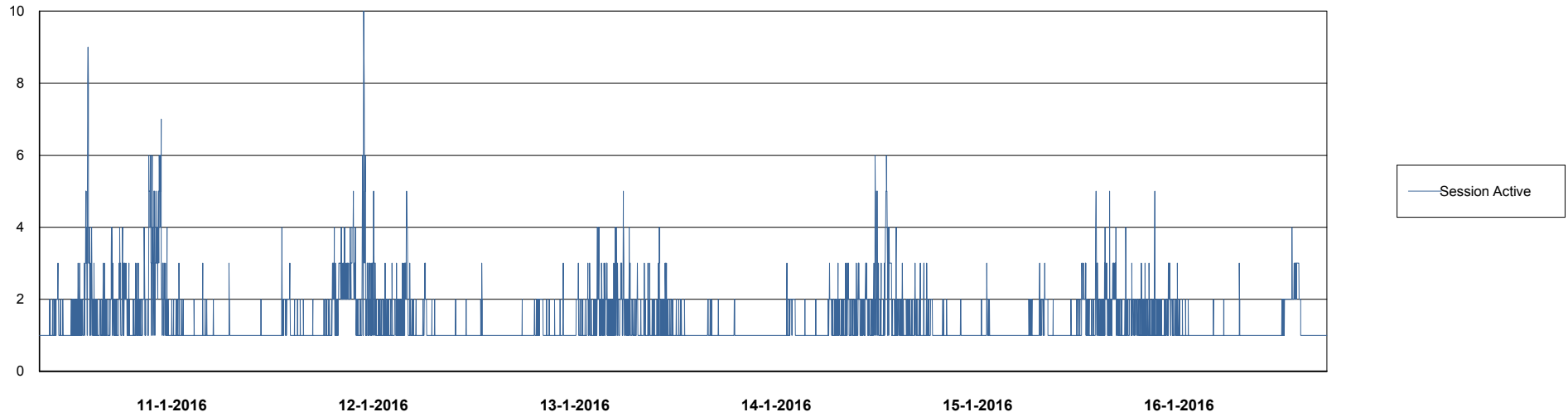
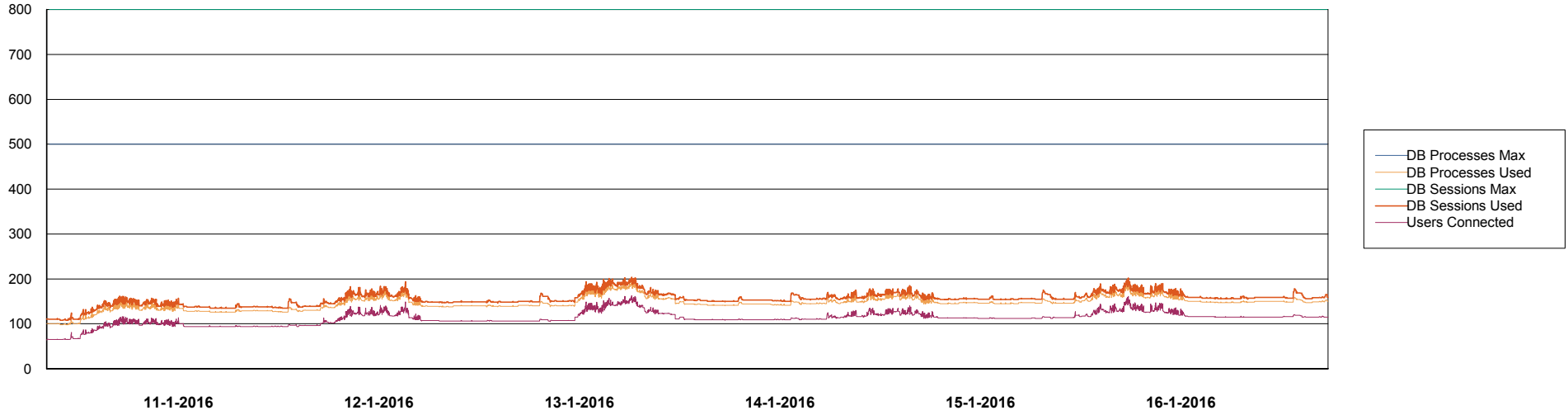
	Total disk space on C (GB)	Free disk space on C (GB)	Total disk space on E (GB)	Free disk space on E (GB)	Total disk space on F (GB)	Free disk space on F (GB)	Total disk space on G (GB)	Free disk space on G (GB)
16-1-2016	279	147	558	465	558	457	279	88
15-1-2016	279	147	558	465	558	457	279	89
14-1-2016	279	148	558	465	558	457	279	91
13-1-2016	279	148	558	465	558	457	279	92
12-1-2016	279	148	558	465	558	457	279	95
11-1-2016	279	148	558	465	558	457	279	97
10-1-2016	279	148	558	465	558	457	279	98

Weekly SLA Customer Report

Customer NIX_Production
Database ID 51



DATABASE PERFORMANCE NIXDB_Production

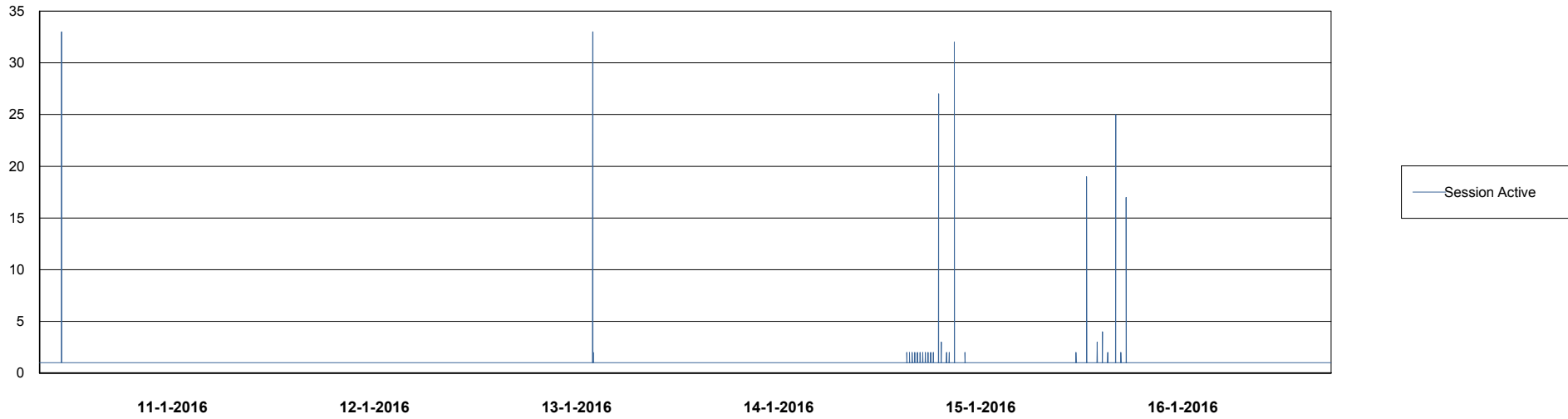
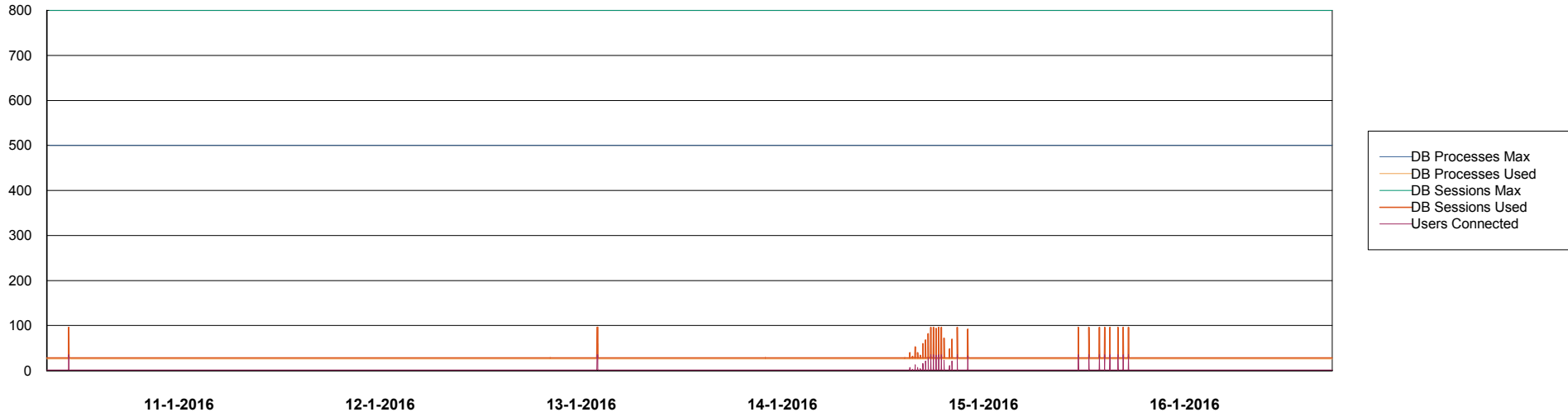


Weekly SLA Customer Report

Customer NIX_Production
Database ID 51



DATABASE PERFORMANCE NIXDB_Standby



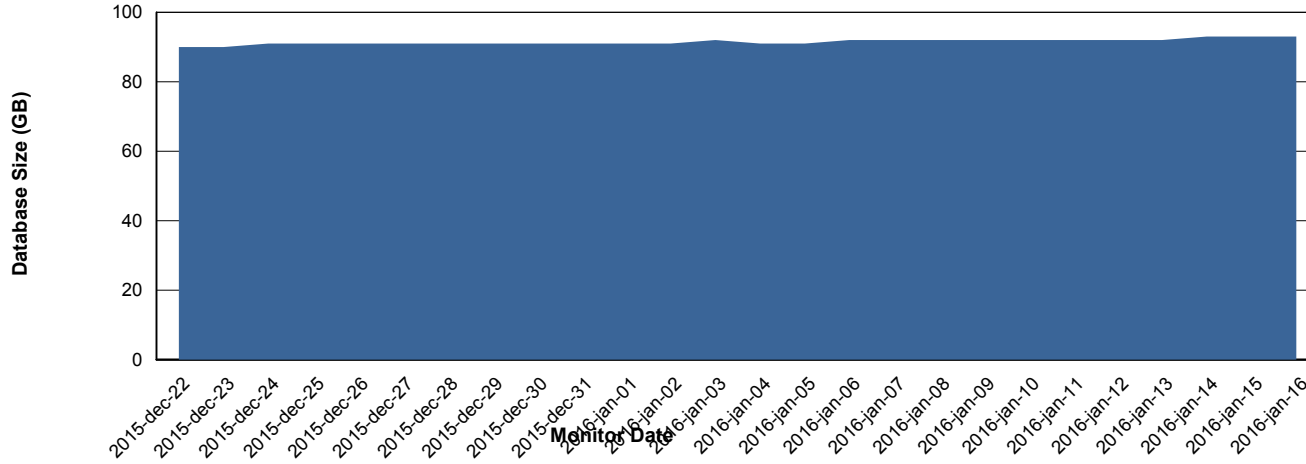
Weekly SLA Customer Report

Customer NIX_Production
 Database ID 51



=====
 DATABASE SIZE NIXDB_Production
 =====

Database growth over last month



=====
 DATABASE TABLESPACES NIXDB_Production
 =====

TOTAL DATABASE SIZE PER TABLESPACE

Date	Tablespace Name	Filesize (Gb)	Usedsize (Gb)	Percentage free
16-1-2016	ABSDATA	50	37	26
	INDX	100	55	45
15-1-2016	ABSDATA	50	37	26
	INDX	100	55	45
14-1-2016	ABSDATA	50	36	28
	INDX	100	55	45
13-1-2016	ABSDATA	50	36	28
	INDX	100	55	45
12-1-2016	ABSDATA	50	36	28
	INDX	100	55	45
11-1-2016	ABSDATA	50	36	28
	INDX	100	55	45
10-1-2016	ABSDATA	50	36	28
	INDX	100	55	45

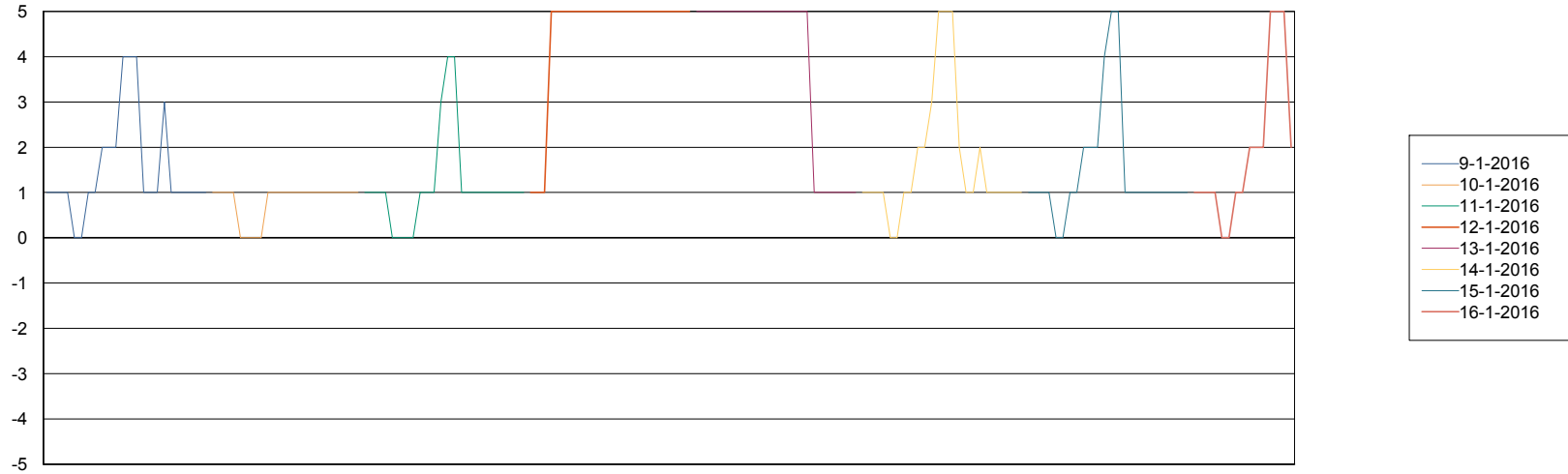
Weekly SLA Customer Report

Customer NIX_Production
Database ID 51



=====
STANDBY DATABASE HEALTH NIX_Production
=====

Recovery lag for last 7 days



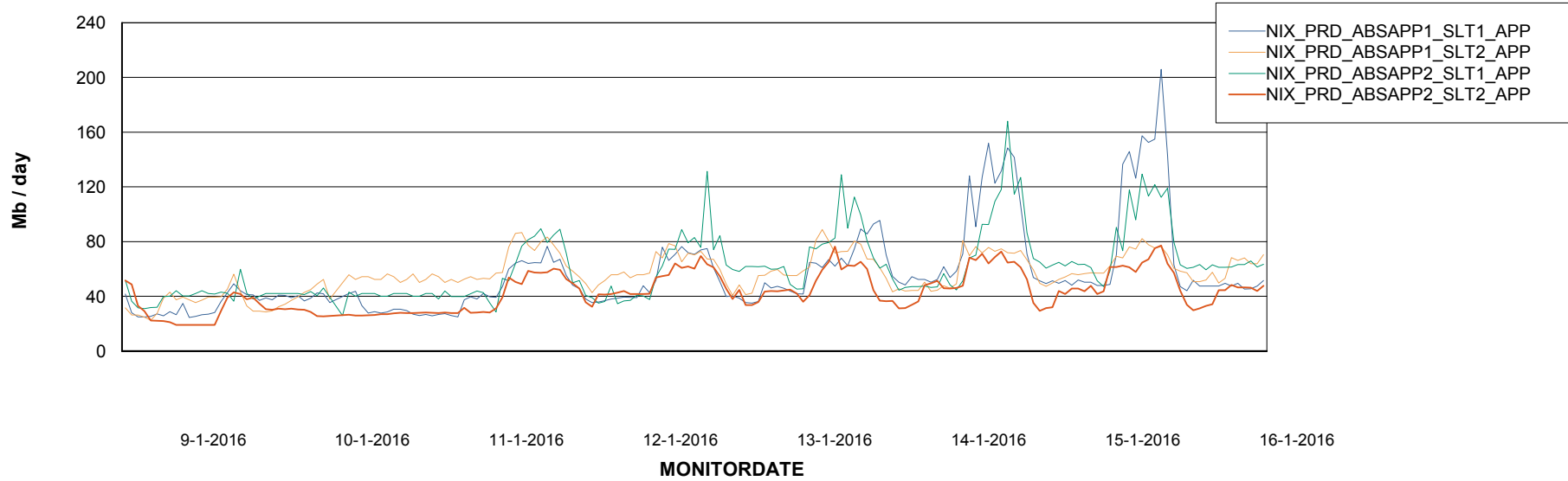
Weekly SLA Customer Report

Customer NIX_Production
Database ID 51



=====
ABSolute Application Server Services
=====

Avg memory used per ABS Server Service



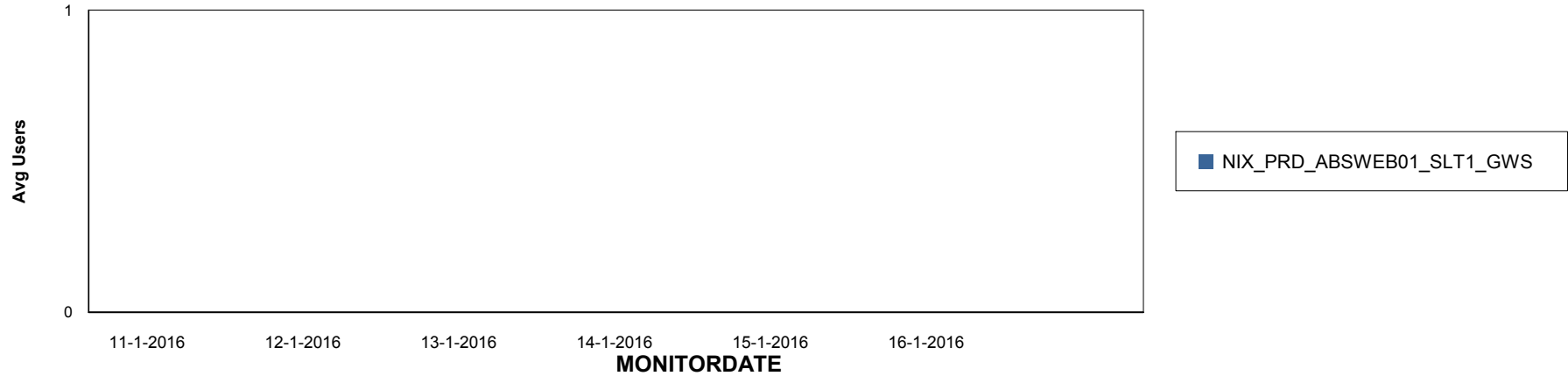
Weekly SLA Customer Report

Customer NIX_Production
Database ID 51

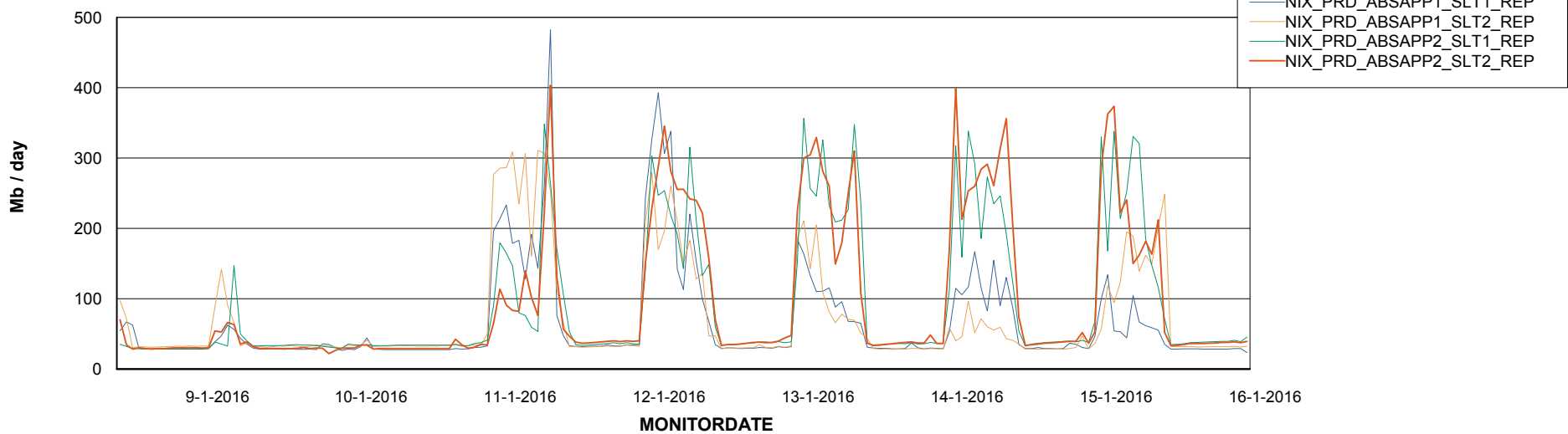


=====
ABSolute Application ReportServer Services
=====

Disaster per ReportServer



Avg memory used per ReportServer Service



Weekly SLA Customer Report

Customer NIX_Production
Database ID 51



Disaster per ABS component

