

Weekly SLA Customer Report

Customer BCH Production
 Database ID 28



=====
 HARDDISK USAGE BCH_PRD_ORCDB1
 =====

	Total disk space on C (GB)	Free disk space on C (GB)	Total disk space on D (GB)	Free disk space on D (GB)
16-1-2016	278	140	278	78
15-1-2016	278	141	278	75
14-1-2016	278	141	278	70
13-1-2016	278	141	278	73
12-1-2016	278	142	278	76
11-1-2016	278	141	278	78
10-1-2016	278	143	278	80

=====
 HARDDISK USAGE BCH_PRD_ORCDB2
 =====

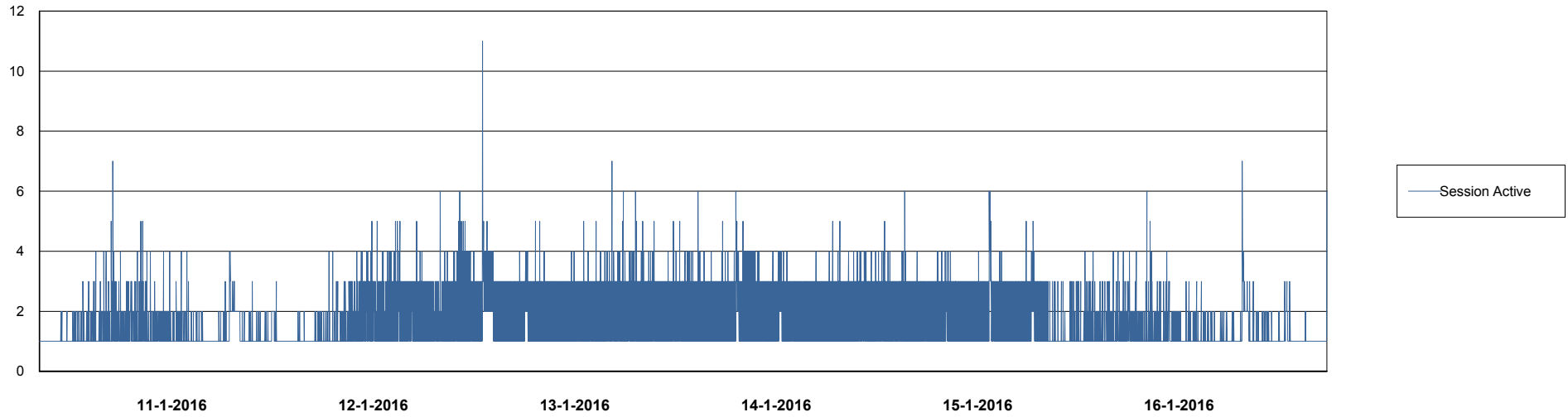
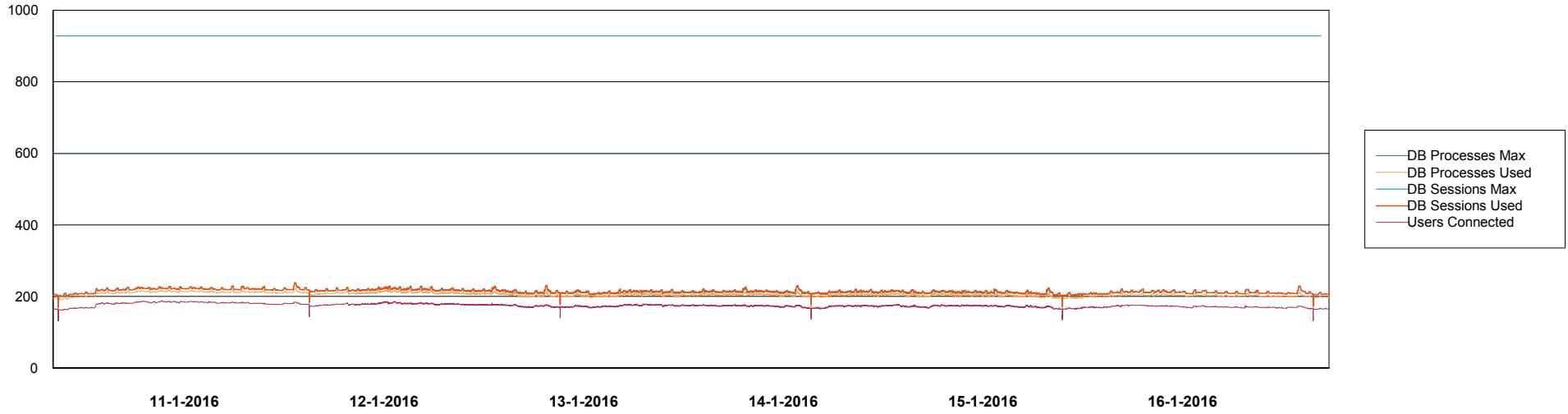
	Total disk space on C (GB)	Free disk space on C (GB)	Total disk space on D (GB)	Free disk space on D (GB)
16-1-2016	278	157	278	75
15-1-2016	278	157	278	72
14-1-2016	278	157	278	67
13-1-2016	278	157	278	70
12-1-2016	278	157	278	73
11-1-2016	278	157	278	75
10-1-2016	278	157	278	77

Weekly SLA Customer Report

Customer BCH Production
Database ID 28



DATABASE PERFORMANCE BCHDB_Production

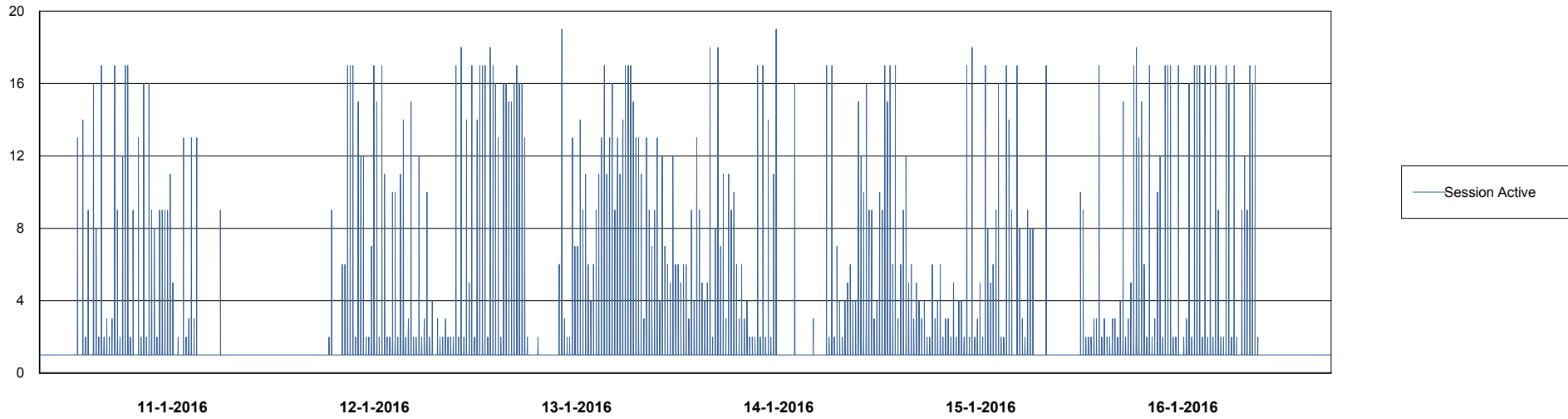
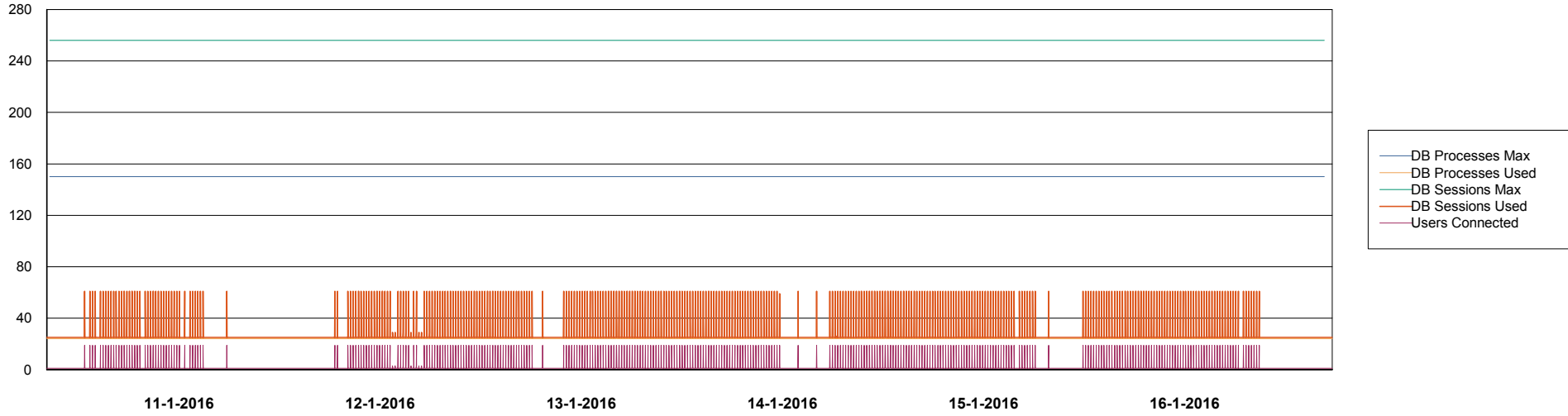


Weekly SLA Customer Report

Customer BCH Production
Database ID 28



DATABASE PERFORMANCE BCHDB_Standby



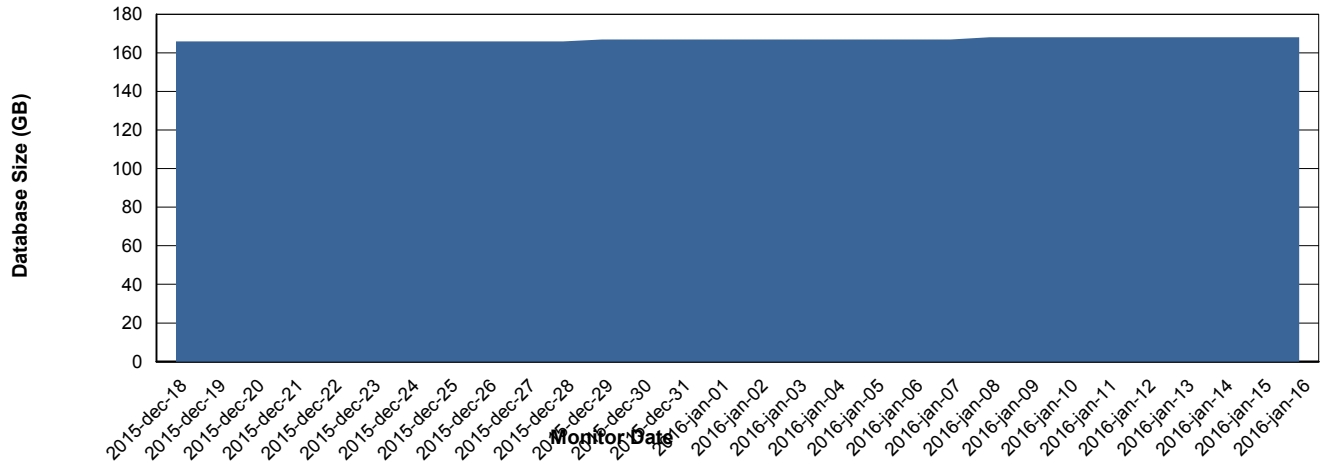
Weekly SLA Customer Report

Customer BCH Production
 Database ID 28



=====
 DATABASE SIZE BCHDB_Production
 =====

Database growth over last month



=====
 DATABASE TABLESPACES BCHDB_Production
 =====

TOTAL DATABASE SIZE PER TABLESPACE

Date	Tablespace Name	Filesize (Gb)	Usedsize (Gb)	Percentage free
16-1-2016	ABSDATA	42	31	26
	INDX	159	135	15
15-1-2016	ABSDATA	42	31	26
	INDX	159	135	15
14-1-2016	ABSDATA	42	31	26
	INDX	159	135	15
13-1-2016	ABSDATA	42	31	26
	INDX	159	135	15
12-1-2016	ABSDATA	42	31	26
	INDX	159	135	15
11-1-2016	ABSDATA	42	31	26
	INDX	159	135	15
10-1-2016	ABSDATA	42	31	26
	INDX	159	135	15

Weekly SLA Customer Report

Customer BCH Production
Database ID 28



=====
STANDBY DATABASE HEALTH BCH Production
=====

Recovery lag for last 7 days

