

Weekly SLA Customer Report

Customer NIX_Production
Database ID 51



=====
HARDDISK USAGE NIX_PRD_ABSAPP2
=====

	Total disk space on C (GB)	Free disk space on C (GB)
9-1-2016	200	159
8-1-2016	200	159
7-1-2016	200	159
6-1-2016	200	158
5-1-2016	200	158
4-1-2016	200	161
3-1-2016	200	162

=====
HARDDISK USAGE NIX_PRD_ABSWEB01
=====

	Total disk space on C (GB)	Free disk space on C (GB)
9-1-2016	300	281
8-1-2016	300	281
7-1-2016	300	281
6-1-2016	300	281
5-1-2016	300	281
4-1-2016	300	281
3-1-2016	300	281

Weekly SLA Customer Report

Customer NIX_Production
 Database ID 51



=====
 HARDDISK USAGE NIX_PRD_ORACLE_B11
 =====

	Total disk space on C (GB)	Free disk space on C (GB)	Total disk space on E (GB)	Free disk space on E (GB)	Total disk space on F (GB)	Free disk space on F (GB)	Total disk space on G (GB)	Free disk space on G (GB)
9-1-2016	279	99	558	348	279	179	558	342
8-1-2016	279	99	558	349	279	179	558	346
7-1-2016	279	99	558	350	279	179	558	351
6-1-2016	279	99	558	351	279	179	558	355
5-1-2016	279	99	558	352	279	179	558	360
4-1-2016	279	99	558	353	279	179	558	364
3-1-2016	279	99	558	354	279	179	558	369

=====
 HARDDISK USAGE NIX_PRD_ORCDB1
 =====

	Total disk space on C (GB)	Free disk space on C (GB)	Total disk space on E (GB)	Free disk space on E (GB)	Total disk space on F (GB)	Free disk space on F (GB)	Total disk space on G (GB)	Free disk space on G (GB)
9-1-2016	279	148	558	465	558	457	279	100
8-1-2016	279	148	558	465	558	457	279	99
7-1-2016	279	148	558	465	558	457	279	99
6-1-2016	279	148	558	465	558	457	279	100
5-1-2016	279	148	558	465	558	457	279	102
4-1-2016	279	148	558	465	558	457	279	105
3-1-2016	279	148	558	465	558	457	279	106

Weekly SLA Customer Report

Customer NIX_Production
 Database ID 51



=====
 HARDDISK USAGE NIX_PRD_ORCDB2
 =====

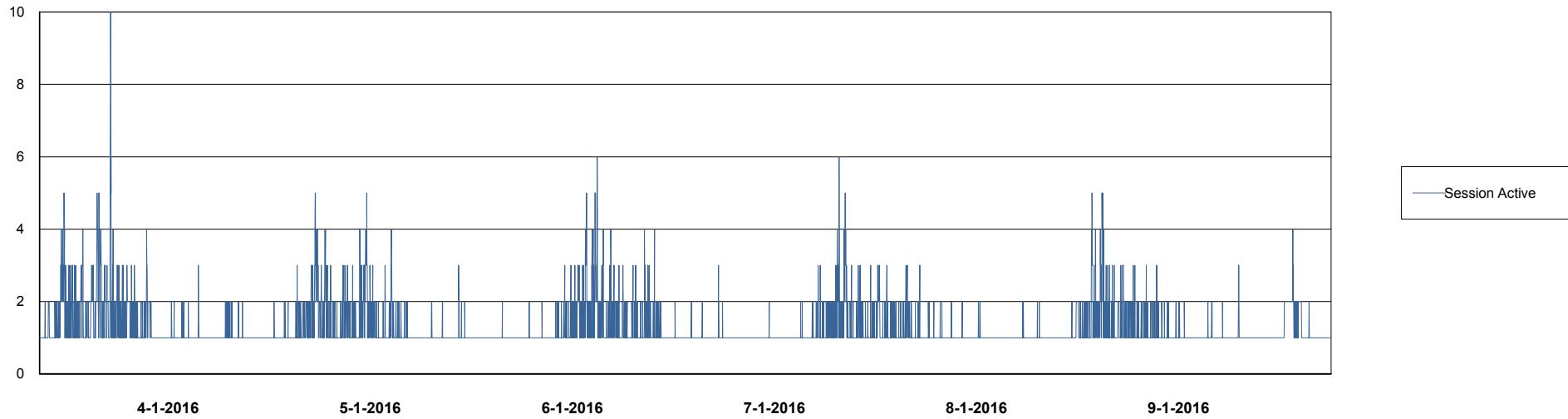
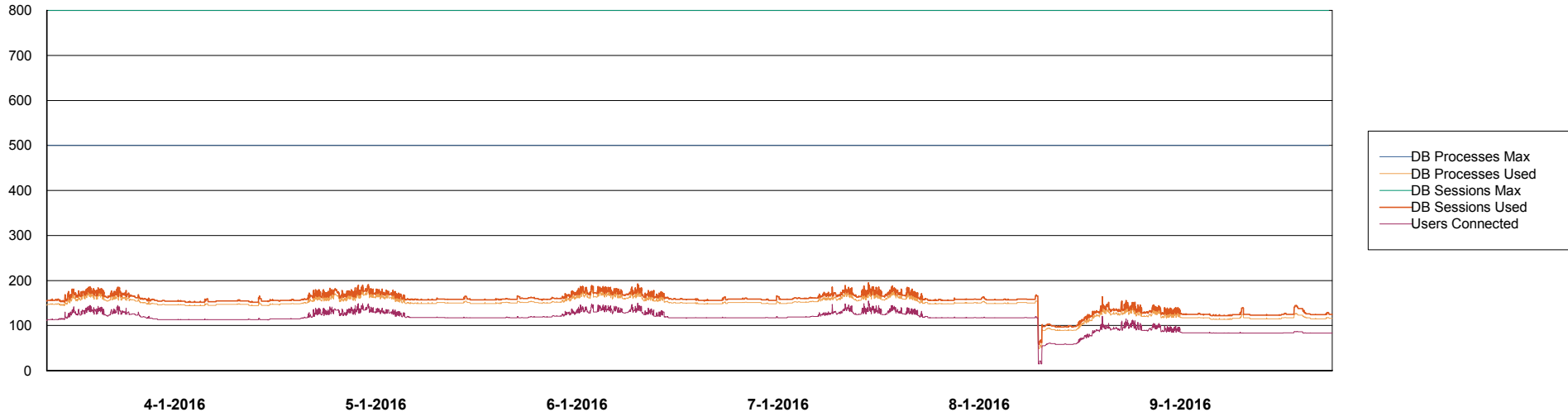
	Total disk space on C (GB)	Free disk space on C (GB)	Total disk space on E (GB)	Free disk space on E (GB)	Total disk space on F (GB)	Free disk space on F (GB)	Total disk space on G (GB)	Free disk space on G (GB)
9-1-2016	279	148	558	465	558	457	279	100
8-1-2016	279	148	558	465	558	457	279	99
7-1-2016	279	148	558	465	558	457	279	99
6-1-2016	279	148	558	465	558	457	279	100
5-1-2016	279	148	558	465	558	457	279	102
4-1-2016	279	148	558	465	558	457	279	105
3-1-2016	279	148	558	465	558	457	279	106

Weekly SLA Customer Report

Customer NIX_Production
Database ID 51



DATABASE PERFORMANCE NIXDB_Production

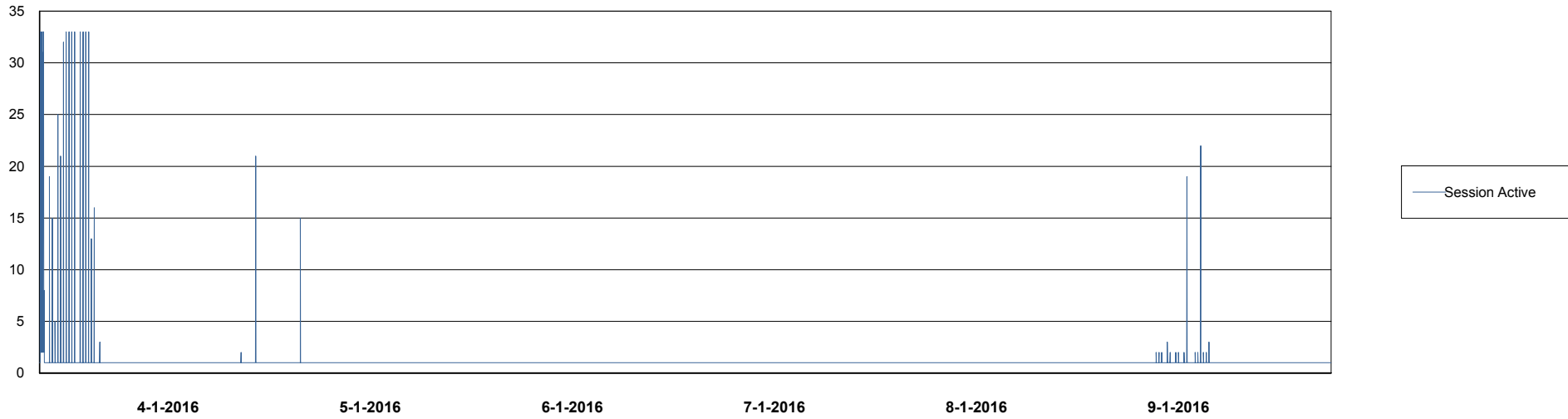
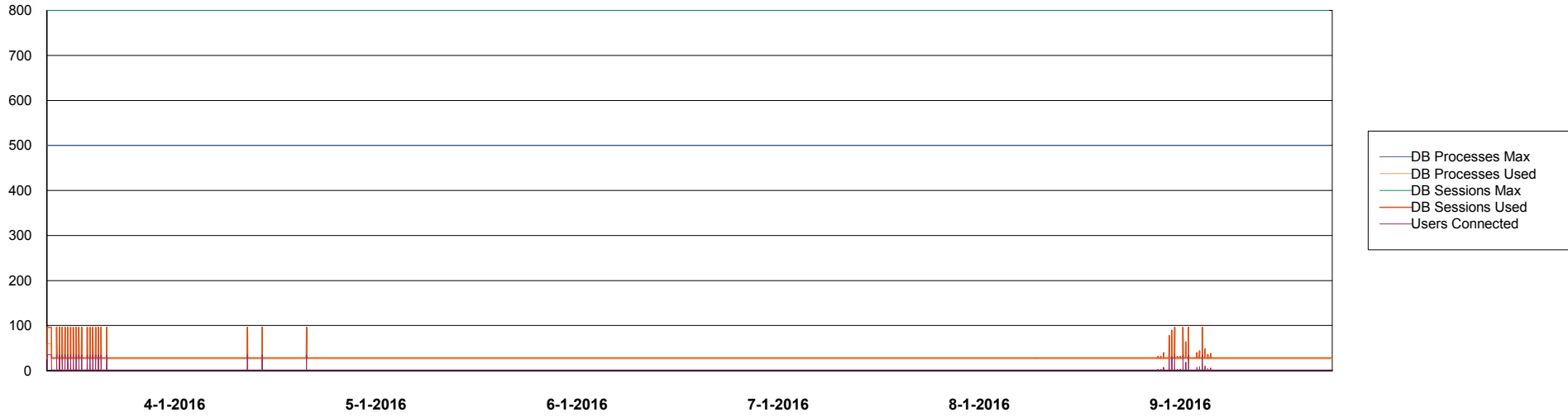


Weekly SLA Customer Report

Customer NIX_Production
Database ID 51



DATABASE PERFORMANCE NIXDB_Standby



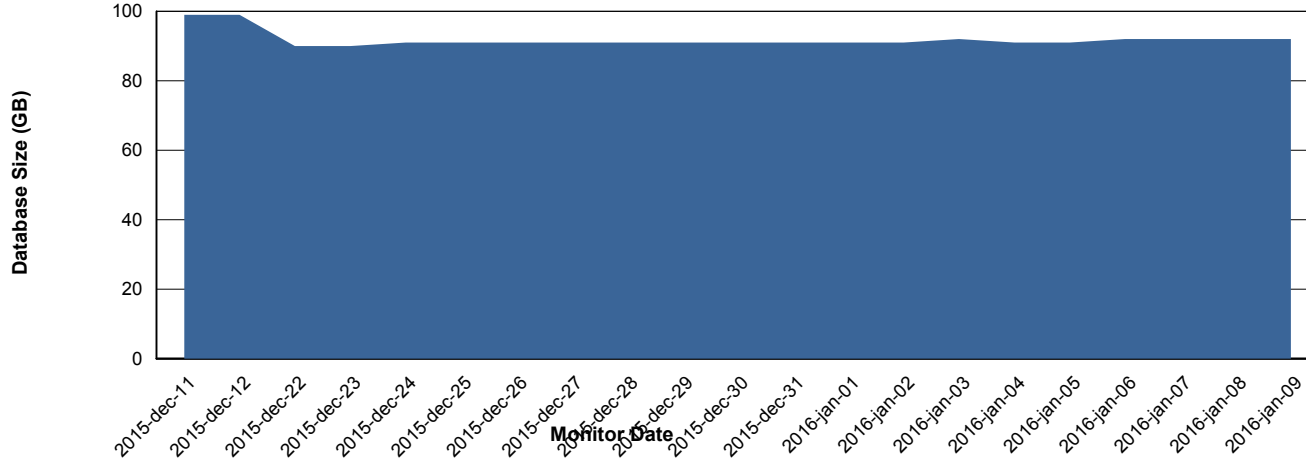
Weekly SLA Customer Report

Customer NIX_Production
 Database ID 51



=====
 DATABASE SIZE NIXDB_Production
 =====

Database growth over last month



=====
 DATABASE TABLESPACES NIXDB_Production
 =====

TOTAL DATABASE SIZE PER TABLESPACE

Date	Tablespace Name	Filesize (Gb)	Usedsize (Gb)	Percentage free
9-1-2016	ABSDATA	50	36	28
	INDX	100	54	46
8-1-2016	ABSDATA	50	36	28
	INDX	100	54	46
7-1-2016	ABSDATA	50	36	28
	INDX	100	54	46
6-1-2016	ABSDATA	50	36	28
	INDX	100	54	46
5-1-2016	ABSDATA	50	36	28
	INDX	100	54	46
4-1-2016	ABSDATA	50	36	28
	INDX	100	54	46
3-1-2016	ABSDATA	50	36	28
	INDX	100	54	46

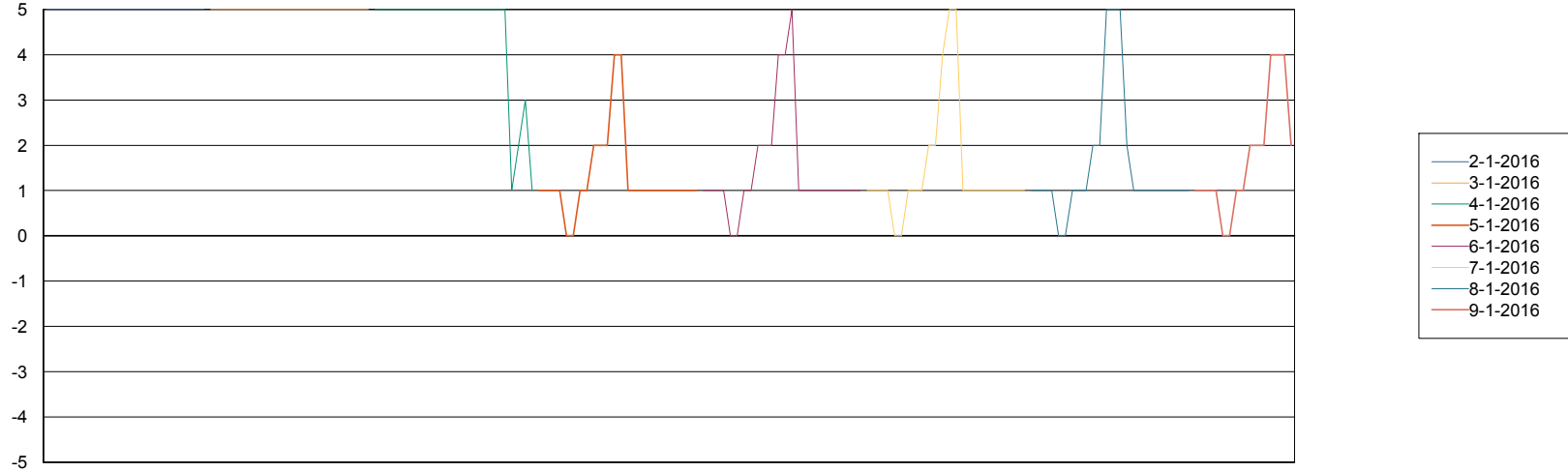
Weekly SLA Customer Report

Customer NIX_Production
Database ID 51



=====
STANDBY DATABASE HEALTH NIX_Production
=====

Recovery lag for last 7 days



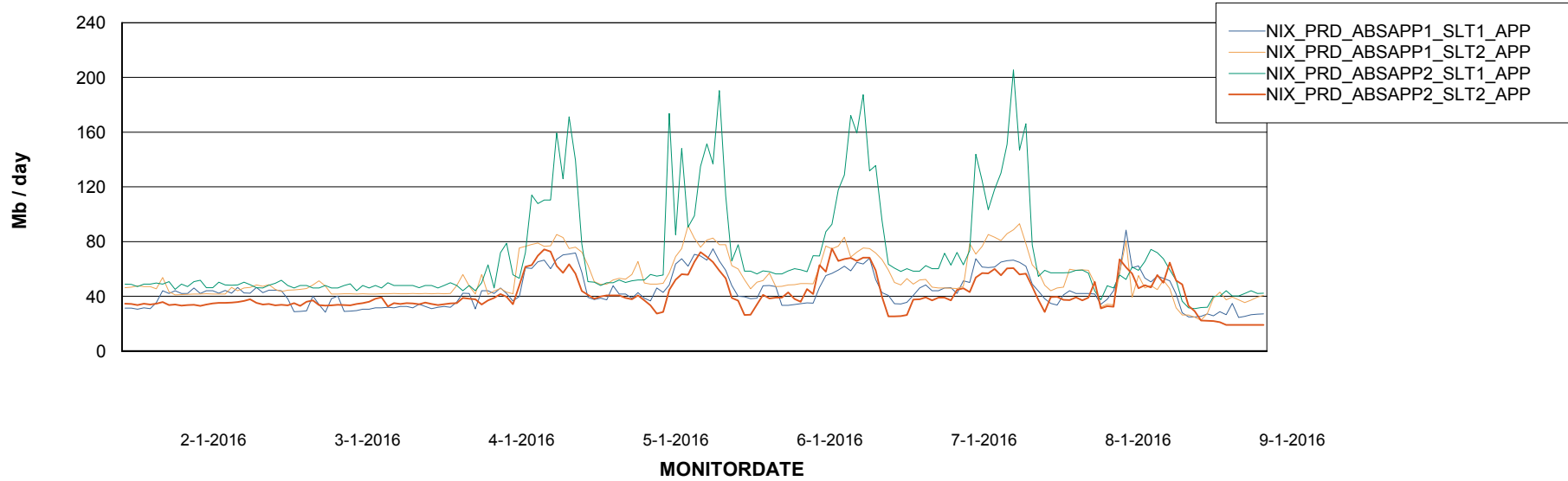
Weekly SLA Customer Report

Customer NIX_Production
Database ID 51



=====
ABSolute Application Server Services
=====

Avg memory used per ABS Server Service



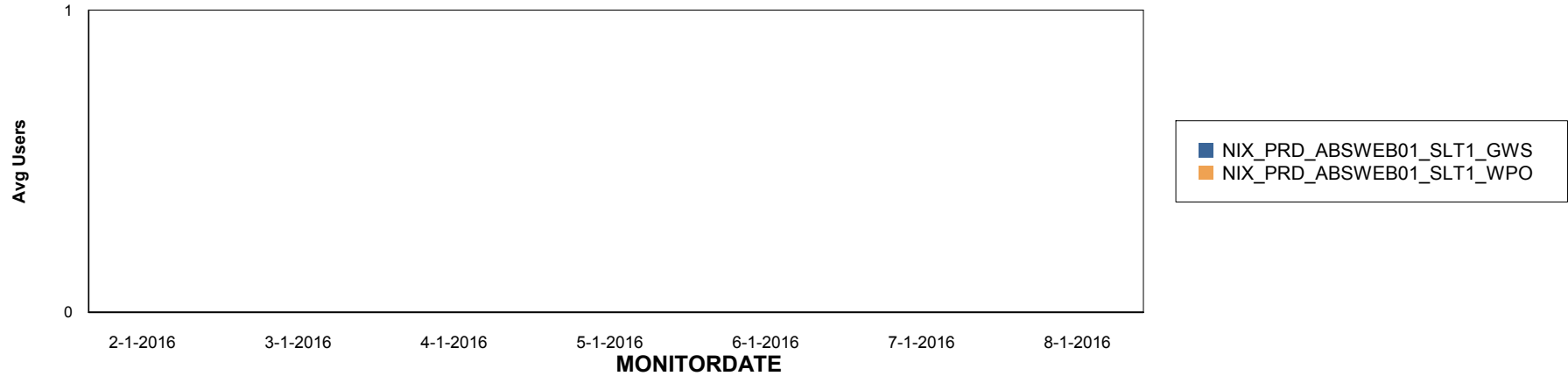
Weekly SLA Customer Report

Customer NIX_Production
Database ID 51

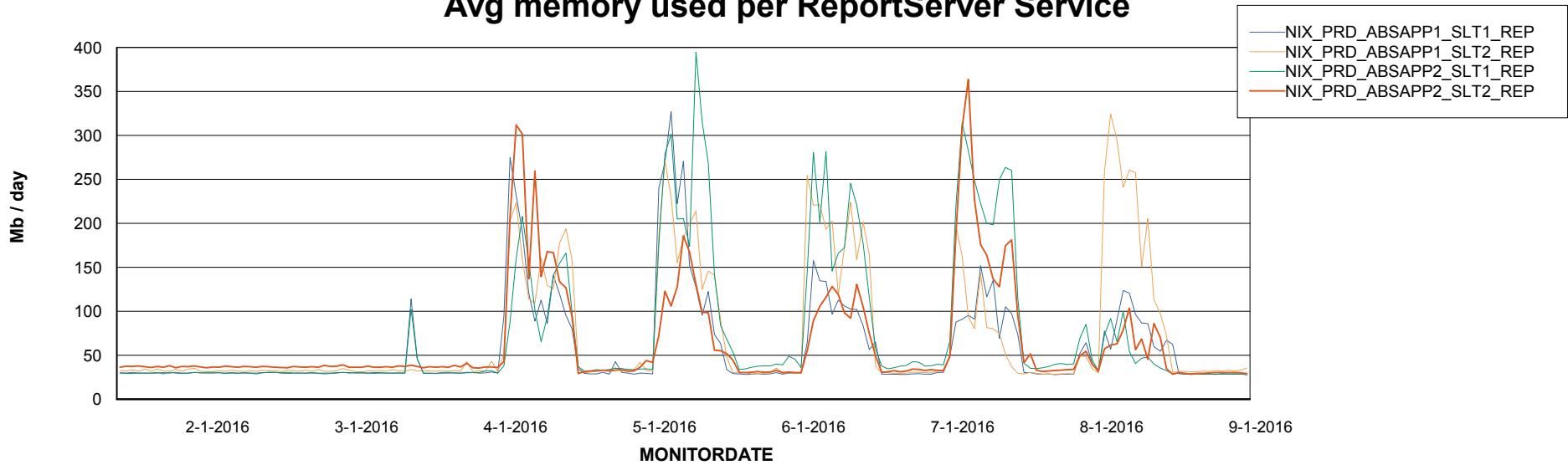


=====
ABSolute Application ReportServer Services
=====

Disaster per ReportServer



Avg memory used per ReportServer Service



Weekly SLA Customer Report

Customer NIX_Production
Database ID 51



Disaster per ABS component

