

Weekly SLA Customer Report

Customer BOH_Production
 Database ID 55



=====
 HARDDISK USAGE BOH_PRD_ORACLE1
 =====

	Total disk space on C (GB)	Free disk space on C (GB)	Total disk space on D (GB)	Free disk space on D (GB)	Total disk space on E (GB)	Free disk space on E (GB)
9-1-2016	130	31	100	51	220	78
8-1-2016	130	31	100	51	220	78
7-1-2016	130	31	100	51	220	79
6-1-2016	130	31	100	51	220	79
5-1-2016	130	31	100	51	220	80
4-1-2016	130	31	100	51	220	40
3-1-2016	130	31	100	51	220	37

=====
 HARDDISK USAGE BOH_PRD_ORACLE2
 =====

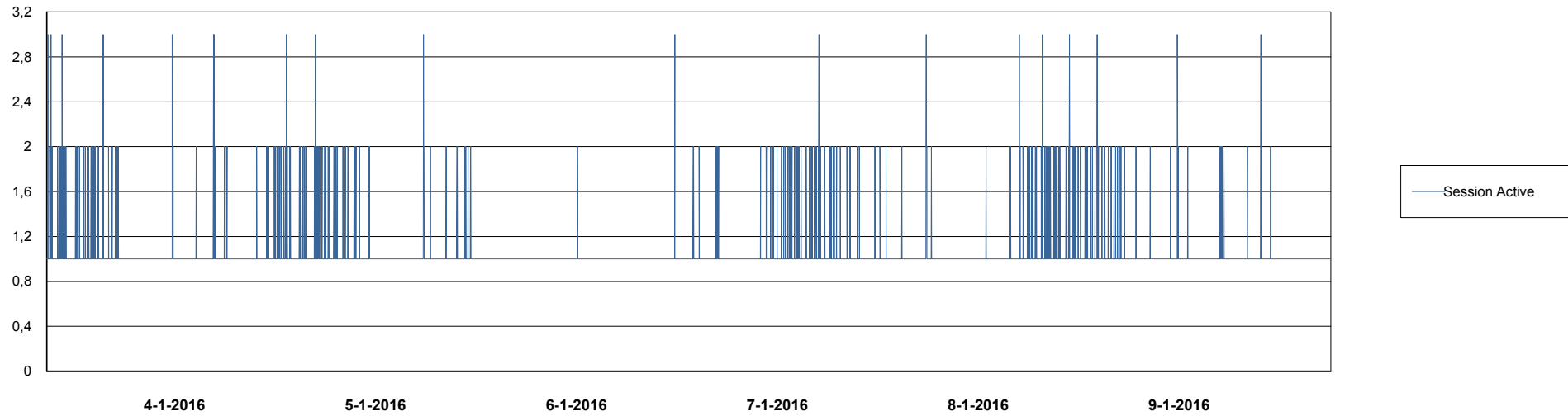
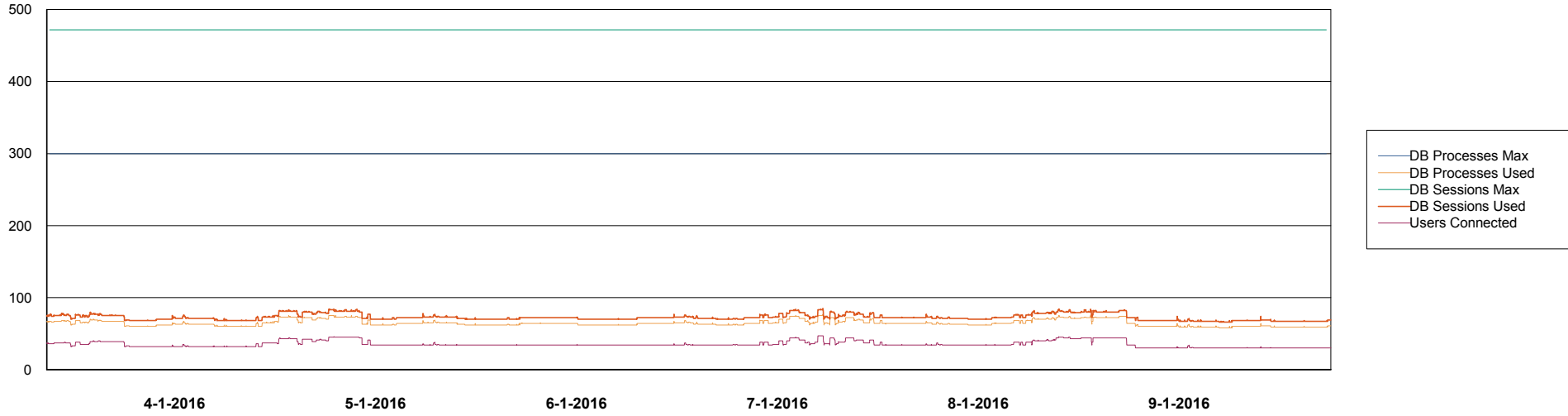
	Total disk space on C (GB)	Free disk space on C (GB)	Total disk space on D (GB)	Free disk space on D (GB)	Total disk space on E (GB)	Free disk space on E (GB)
9-1-2016	557	444	227	179	329	76
8-1-2016	557	444	227	179	329	76
7-1-2016	557	444	227	179	329	77
6-1-2016	557	444	227	179	329	78
5-1-2016	557	444	227	179	329	78
4-1-2016	557	444	227	179	329	46
3-1-2016	557	444	227	179	329	45

Weekly SLA Customer Report

Customer BOH_Production
Database ID 55



=====
DATABASE PERFORMANCE BOHDB_Production
=====

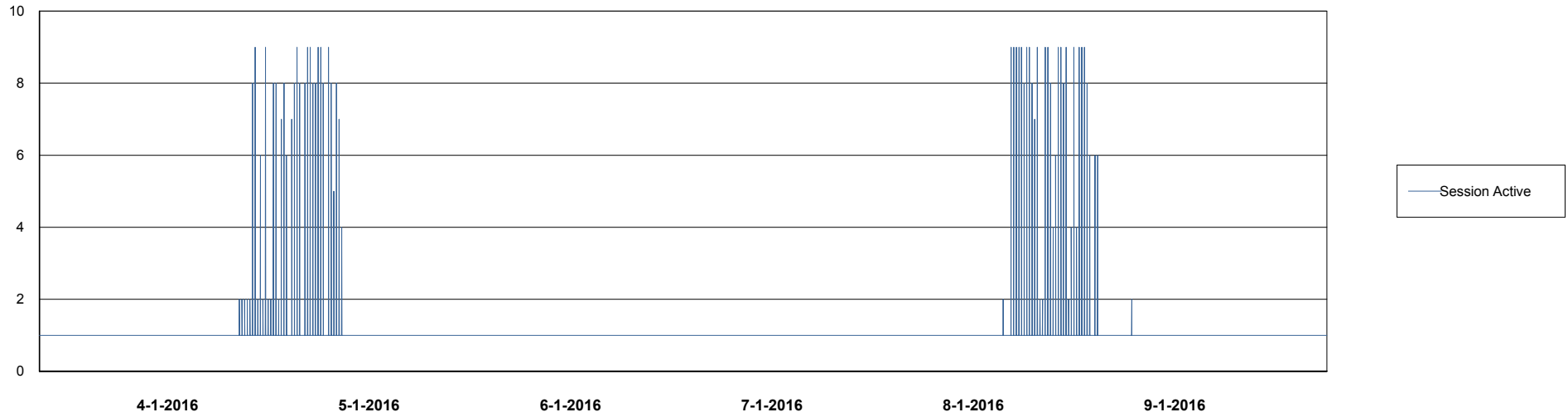
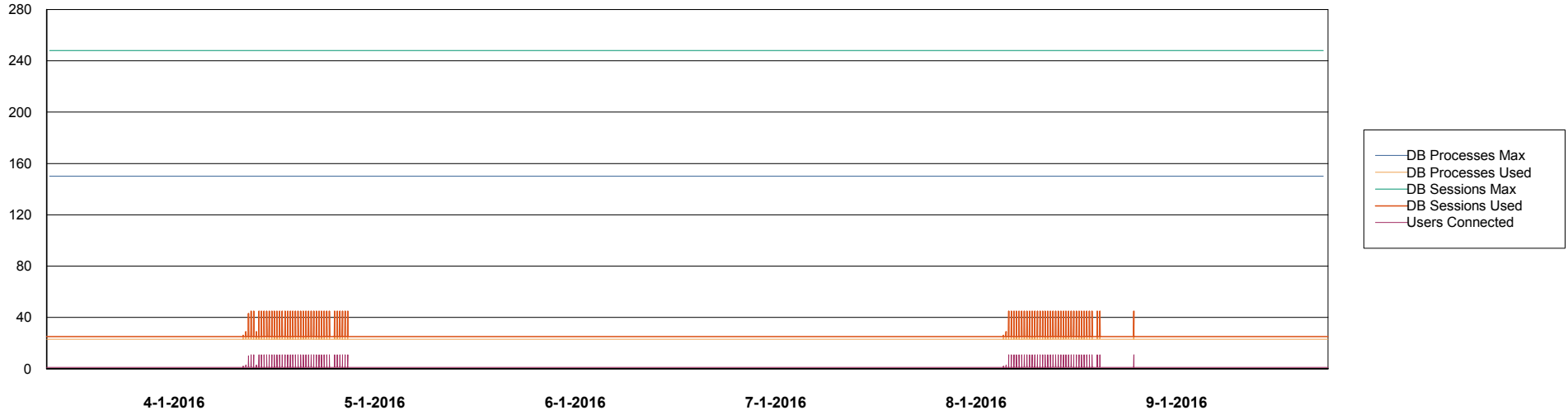


Weekly SLA Customer Report

Customer BOH_Production
Database ID 55



DATABASE PERFORMANCE BOHDB_Standby



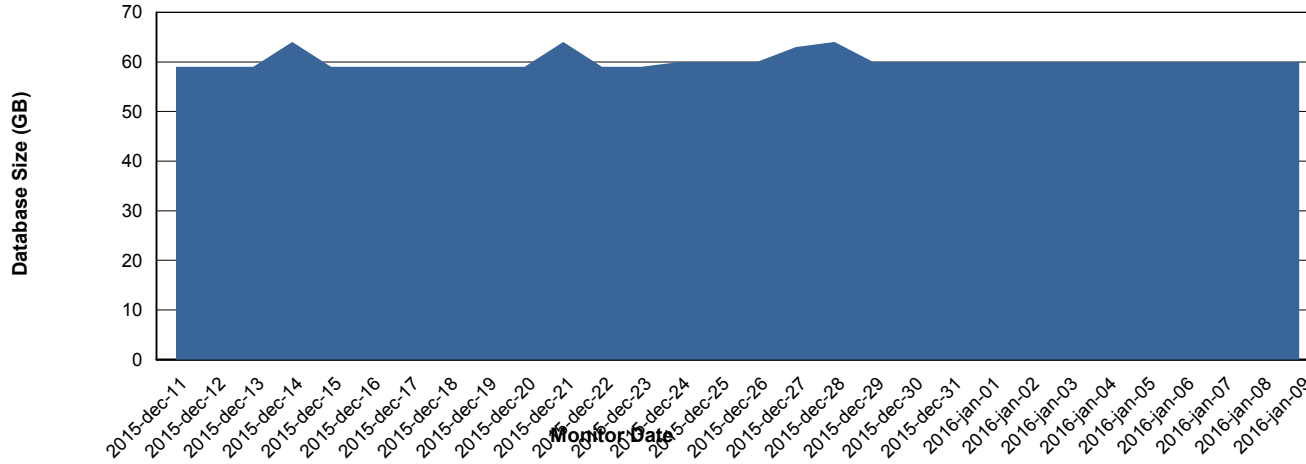
Weekly SLA Customer Report

Customer BOH_Production
 Database ID 55



=====
 DATABASE SIZE BOHDB_Production
 =====

Database growth over last month



=====
 DATABASE TABLESPACES BOHDB_Production
 =====

TOTAL DATABASE SIZE PER TABLESPACE

Date	Tablespace Name	Filesize (Gb)	Usedsize (Gb)	Percentage free
9-1-2016	ABSDATA	39	33	15
	INDX	48	25	48
8-1-2016	ABSDATA	39	33	15
	INDX	48	25	48
7-1-2016	ABSDATA	39	33	15
	INDX	48	25	48
6-1-2016	ABSDATA	39	33	15
	INDX	48	25	48
5-1-2016	ABSDATA	39	33	15
	INDX	48	25	48
4-1-2016	ABSDATA	39	33	15
	INDX	48	25	48
3-1-2016	ABSDATA	39	33	15
	INDX	48	25	48

Weekly SLA Customer Report

Customer BOH_Production
Database ID 55



=====
STANDBY DATABASE HEALTH BOH_Production
=====

Recovery lag for last 7 days

